

A
Vol 4

ISSN 0362-0344

TRAIL BREAKERS

VOLUME 22 No. 4 SUMMER 1996



PRICE
\$3

CLARK COUNTY
GENEALOGICAL SOCIETY

VANCOUVER, WASHINGTON

TRAIL BREAKERS is published quarterly: FALL (October), WINTER (January), SPRING (March), SUMMER (June) by the Clark County Genealogical Society, P.O. Box 2728, 1511 Main St., Vancouver, WA 98668

BOARD OF DIRECTORS:

Jerri St. John	(360)887-3766	President
Jane Germann		Vice-President
Mildred Piontek		Recording Secretary
Mary Katschke		Treasurer
Anita Roberts		Ass't Sec.-Treas.
Fred Smith		Immediate Past Pres.

TRAIL BREAKERS STAFF:

Editor:	(360) 892-8019	Jane Germann
Ancestor Charts:		Roy Katschke
Book Reports:		Joanne Bortniak
Funeral Home Records:		Gerry Gilman
Surname Editor:		Delillah Knight
Vancouver Newspapers:		Pat Bauer
Queries:		Barbara Germann

DUE DATES for material from the individual editors are: August 15, November 15, February 15, and May 15.

The Editor accepts donation of "Articles," "Fill-ins," "How To's," "Biographies," etc. Any material for this may be left in the Editor's File at the CCGS Library and will be greatly appreciated.

Especially needed are articles of "Genealogical Experience." If you have one, call the Editor: This is OUR periodical. Please include information of source if a reprint. *If your submission is available in a word processing format, please let the editor know.*

Neither the CCGS or Editors of the TRAIL BREAKER accepts responsibility for errors of fact or judgement in the material submitted to and printed in the TRAIL BREAKERS. If errors are brought to our attention, we will try to correct them.

The Clark County Genealogical Society (CCGS) is a service organization dedicated to the collection and publication of the heritage of Clark County. CCGS offers assistance to genealogical researchers and family historians.

MEMBERSHIP: Membership is open to anyone interested in the collection and preservation of family and regional history. It includes a subscription to the TRAIL BREAKERS, a DIRECTORY, a nearly monthly NEWSLETTER, and free checkout privileges at the CCGS Library. Membership Chairperson: Mary Katschke.

DUES: \$15.00 per year for an individual, \$20.00 for joint members (two people, only one publication mailing). Life membership is \$250, joint life (married couples only) is \$310. Contributing membership is \$50.00 or more per year.

MEETINGS: CCGS 1995-96 board meetings, general meetings, workshops, seminars and other events are published in the CCGS Newsletter. The place(s), time, and other information about the meetings such as who is speaking is listed. There is often beginner instruction or computer interest group prior to general meetings. Board meetings are usually held the third Tuesday. Inside the front cover of the Directory is a list of general, board, and special meetings with times and places.

LIBRARY: The Clark County Genealogical Society Library is located in the Fort Vancouver Historical Museum at 1511 Main Street, Vancouver. It is open to members and the public Tuesday through Saturday afternoons from 1:00 until 4:45 p.m. A large selection of supplies and forms are available for purchase. Head Librarian: Doris Wastradowski.

TABLE OF CONTENTS

ANCESTORS: A PBS TELEVISION SERIES

Adapted from KBYU informational materials	2
Decipher these from Olmstead's letter	3
Col. Olmstead's For Pulaski, Georgia, report of surrender letter (April 12, 1862)	
Contributed by Gerry Gilman	4
Indiana County Historians (a helpful research list)	
Submitted by Doty Baber	8
Greet these new CCGS Members! Sandy Thompson	11
Condit Family Travels the Oregon Trail (Part 3)	
Re-printed by permission of editor Jim Hart	12
New Books at CCGS by Joanne Bortniak	14
Salt Lake City - Here We Come!	15
Knapp Mortuary Records (1943l) extracted by Gerry Gilman	16
Vancouver Register (1869 Vancouver Newspaper) extracted by Pat Bauer	22
Ancestor Charts formatted by Roy Katschke	
Diane Vere ROOT	28
Frederick VanNUS	32
Frank Douglas STICKNEY II	32
Gordon Richard SNOOK	33
Surname File (Campbell to Carpenter) by Delillah Knight.....	34
Queries	38
About Print and Printouts by Gene Kuechmann	39
NARA Gift Fund	40
Index	41
Clark County Genealogical Society Publications	44

ANCESTORS: A PBS TELEVISION SERIES

KBYU-TV Provo, UT, began shooting *Ancestors*, a family history and genealogy series for PBS, in September of 1995. This summer they will begin to promote the series to the PBS stations for showing on their local programming. Until the promotional material is available, your local station will be perplexed by an inquiry. **Wait until Fall to call** and then ask if it will be available locally, and if not, then encourage them to see about getting the series.

The series focuses on presenting instruction for people who have had a passing interest in starting their family history and genealogy, but never made it past that initial hurdle of where to start and what to do.

Strategies and tips will be shared in each episode by the host, Jim and Terry Williard, who will interview guest experts. The guests will help shed light on some of the best ways to find clues to who our ancestors are.

SERIES OVERVIEW:

ONE: What's Your Line - a preview of the series as well as dispelling common misconceptions about genealogy. It will also define the pedigree chart as one of the most important tools for searching for ancestors.

TWO: Tales in the Attic - will help the viewer to understand

how to get started at home, what to look for, how to organize this information on a family group record or pedigree chart.

THREE: Family Folklore - focusing on how the novice can successfully interview and document living relatives, it is important to know basic elements on interviewing that will be rewarding, instead of a frustrating experience. A family will show how fun and easy this can be.

FOUR: Documented Drama - will help you understand how the records that you find about ancestors are related to significant life events that all of us share. Looking at records, births, marriage, and deaths of ancestors will be reviewed. The episode will also explain the difference between compiled and original records and why they are important. A case study will illustrate important strategies.

FIVE: Treasured Aisles - after you've exhausted resources at home, this episode will show different places in the US where you can find genealogical records. City, state and national repositories that are most commonly used in research will be introduced and the case study will show how easy finding records can be.

SIX: American Record's Greatest Hits - three major American records, the census, military and passenger lists will be explored. Tips and stories of ethnic related U.S. migration patterns will be presented.

SEVEN: Our Ethnic Heritage - focuses on two major groups of American records: Afro-American and Native American records - a case study will show one

family's journey through these records.

EIGHT: Hand-Me-Down Genes - your genetic genealogy could save and change the course of your life. A case study of four sister will be shared.

NINE: Computers Don't Byte - will demonstrate how computers and the Internet can make searching for ancestors more fun and exciting than it has ever been before. Digital imagery and photo CD technology will be introduced.

TEN: Leaving a Legacy - focusing on the impact that leaving a legacy can have on your life and the lives of those to come, tips on how to hold family reunions, publish family histories, share photographs and images of what you have learned will be given. The closing of this session will have a montage of More Family Reunion footage filmed in 1915.

Graphics for the series will be by an awarding-winning team of 4:2:2 from Bristol, England.

Shot on location, interesting stories at the end of the show will demonstrate the impact family history and genealogy has on individuals and family relationships.

The Federation of Genealogical Societies has supported this effort. CCGS, WSGS, and other societies have made donations to help production. You can too. Make a tax deductible contribution to **Ancestors, c/o KBYU Television, 2000 Ironton Blvd., Provo, Utah 84606.**

Decipher these from Olmstead's letter

On the next page the a photocopy of the first page of the four page letter that 26 year old Col. Charles H. Olmstead wrote regarding the surrender of Ft Pulaski, Georgia. It was written in 1862, in a very educated hand -- after close examination, no words were found to be misspelled. Can you decipher what these are?

1. This is the saluation of the letter:

_____ Capt. E P Lawton, - C.S.A.
 _____ Aft- Adjutant General
 _____ Military Dept of Ga

2. This is the ending of the letter:

_____ Very respectfully
 _____ (Yours old Col -
 _____ Charles H. Olmstead
 _____ Col old Col Reg of Ga

3. This was difficult to figure out because it was an unfamiliar military term. It appeared twice in the letter:

and both the Columbiads planted there

8 inch & 10 inch Columbiads, and Parrotts &

4. This (in quotes), also an unfamiliar military term, was second difficult to figure out:

Concentrated upon the "iron confie"

5. What is the name of this Guard Unit?

the "Iron Bands"

6. These three have a common capital:

a. James projectile,
 b. Privates James G. Smith
 c. Joseph Singer

7. Try these words:

a. shapeless,
 b. dismounted or made up
 c. it will be impossible
 d. treated with much kindness

Fort Pulaski April 12th 1862

Capt. E. P. Swinton, - C. S. A.

Aft. Adjutant General

Military Dept. of Ga.

Captain

I have the honor to report that early in the morning of the 10th inst. I received, under cover of a flag of truce, a communication from Major Gen. David Hunter of the Federal Army, demanding the immediate surrender of Fort Pulaski, its armament and garrison, to the forces of the United States on Tybee Island, and granting me but (30) thirty minutes for a reply. Of course I could answer in but one way; the officer who brought the communication returned to Tybee and shortly after, at eight o'clock A.M. precisely, the enemy opened fire upon us from a battery in Bullens wood. The firing soon became general, battery after battery opened upon us until their line of fire extended from the woods beyond the S.E. battery down to King's Landing. I have since learned that eleven batteries formed the enemy's attack; for their position, weight of metal employed &c I beg to refer you to the enclosed plan furnished me by Brig Gen Williams U.S.A.

My men fought their guns most gallantly, they were deliberate in their aimings, free from all flurrying and excitement, and in short, behaved like veterans.

It soon became evident to my mind that the entire attack was being concentrated upon the "iron cap" at the S.E. angle of the Fort, and furthermore that a battery of rifled cannon, throwing the James projectile, was making sad havoc with the masonry at that point; the embrasure was hit so often that it became shapeless, a gun in the adjoining casemate was dismounted and in the second casemate from

Col. Olmstead's Fort Pulaski, Georgia, report of surrender letter¹

Fort Pulaski April 12th 1862

Capt. E. P. Lawton, C.S.A.²
Asst. Adjutant General³
Military Dept. of Ga⁴

Captain:

I have the honor to report that early on the morning of the 10th inst.⁵ I received, under cover of a flag of truce, a communication from Major Gen. David Hunter of the Federal Army demanding the immediate surrender of Fort Pulaski, its armament and garrison to the forces of the United States on Tybee Island⁶ and granting me but (30) thirty minutes for a reply. Of course I could answer in but one way; the officer who brought the be returned to Tybee and shortly after, a eight oclock AM precisely, the enemy opened fire upon us from a battery in Cullens wood. The firing soon became general, battery after battery opened upon us until his line of fire extended from the Woods beyond the IV Battery down to King's landing. I have since learned that eleven batteries formed the enemy's attack; from their position, weight of metal employed &c. I beg to refer you to the enclosed plan furnished me by Brig. Gen. Gillmore U.S.A.

My men fought - their guns most gallantly; they were deliberate in their aiming, free from all flurry and excitement, and in short, behaved like veterans. It soon became evident to my mind that the entire attack was being concentrated upon the "**prom coupe'e**"⁷ at the SE angle of the Fort, and furthermore that a battery of rifled cannons throwing the James projectile⁸, was making sad havoc with the masonry at that point, the embrasure⁹ was hit so often it became shapeless, a gun in the adjoining casement was dismounted and in the

¹ CCGS member Geraldine Gilman purchased this letter at an estate sale in Coeur d'Alene, Idaho. A photocopy of the first page of the letter is printed on the facing page. She and her husband Jim made a typed draft of the four pages. Editor Jane Germann spent additional time studying the handwriting, making corrections, and adding footnotes. Col. Russell Talbert of Vancouver was called upon for some military background; he also confirmed the spelling of columbiads.

² C.S.A. - Confederated State of America; footnote # 23 has background information on this battle.

³ The old writing in this letter might be interpreted Apl, but it an A followed by "P" with an "s" to indicate a double s, and then a "t" with the crossbar to the right of the upright, yielding Afst. - or Asst. - for Assistant as the correct interpretation.

⁴ Ga was the abbreviation for Georgia; GA is the current form.

⁵ instant, meaning in the same or current month.

⁶ Q.A. Gillmore established rifled guns on Tybee Island at a range of from 1 -2 miles from the Fort. The forst was of enclosed masonry construcion with about 40 guns in casemates and in barbette. Bombardment started about 8 a.m. on the 10th and continued without interruption with the Confederates surrendering at 2 pm of the 11th. The Federals killed one Confederate, weriouly woulnded another, and influicted about a dozen other casualties. "It was the first combat of rifled guns and masonry forts and led to a revolution in the construction of seacoast defense" (Fieberger, 85) -- from John S. Bowman's *The Civil War Almanac*, p 296-297.

⁷ "prom coupe'e" - perhaps prom short for promontory which means a high point of land projecting into the sea and coupe'e which is a French navigation term for gangway; thus a walk way along a bluff.

⁸ The post script refers to James guns, this would be the shell fired.

⁹ embrasure, an opening through which missiles may be discharged.

second casement from the angle four or five shot and shell were thrown in quick succession. I mention this to show with what accuracy the guns of the enemy were aimed.

At about 7 oclock PM the firing on both sides slackened and finally ceased. I had the time to look around and ascertain the damage done to the work by the terrific fire poured in upon us. A glance of the condition of the SE Angle convinced me that a few hours more of so heavy a cannonade¹⁰ would make a breach, the entire wall was flaked away to the depth of four feet, while here and there a shot had made its way clear through, the parapet¹¹ above this point was leveled and both the columbiads¹² planted there had been disabled. I could make no change in the position of the guns during the night - as my casemate gun had been broken by a round shot. - At 11 1/2 oclock PM the enemy opened fired again and kept it up at intervals during the night. By 6 oclock in the morning the engagement was reopened. My men serving their guns with more rapidity than in the previous day, they having ascertained the range exactly. Towards 12 oclock in the day it began to be extremely dangerous to pass the S.E. Angle on the way to the ordnance room for shell, as scarcely a moment elapsed that also casemates¹³ were free from clouds of brick and mortar. At two oclock the whole of the wall in front of two casemates had fallen into the moat and the breach was being widened every instant, the west side of the Fort was a perfect wreck of timber & masonry. Six of the barbette¹⁴ guns dismantled or useless and many of our transverses much shattered. Still I had very few men hurt and could have sustained the fight much longer but for a new danger - that sprung upon us, - the breach in our wall gave free access to the projectiles that had made it directly to our North magazine, the brick work covering the Magazine door was struck five or six times in succession and it was evident that it was only a question of two or three hours whether the lines of the whole garrison should be destroyed by the explosion of the Magazine, for this result was inevitable. Under these circumstance cut off from all hope of relief or the possibility of a retreat, the Fort practicably breached, some of my most effective guns rendered useless and the Magazine liable to be blown up in a short time¹⁵, I felt compelled to yield.

By express stipulation my sick and wounded are to sent up to the Confederate lines under the charge of Corporal Landershire our hospital steward.

Our casualties have been remarkably few only three men seriously wounded. Privates A. Shaw & Isaac Ames of the Oglethorpe Light Infantry, Co. B. and Private T.J. Moulton of the Wisc¹⁶ Guards - these men all received their wounds while gallantly fighting at the guns. Adjutant. M.H. Hopkins is also slightly wounded in the eye and several others have received severe contusions from flying fragments of bricks.

Officers and men have all behaved so bravely that it would seem invidious for me to particularize, but I cannot pass by the names of Privates James Foster of the Oglethorpe Light Infantry, Joseph Singer of the Washington

¹⁰ cannonade, a continued discharge of cannon, especially during attack.

¹¹ parapet, top of/or a defensive wall.

¹² columbiads, a type of gun; in the post script there is a reference to 8" & 10" columbiads. Col. Russell Talbert of Vancouver found a reference to this gun in his two volume set of the Civil War: The confederates had older and less effective equipment and had to make do with 32# naval smooth bores and columbiads. Another of his resources stated there were 10 nine inch columbiads.

¹³ casemate, an enclosed area with embrasures for artillery.

¹⁴ barbette, a platform or mound of earth from which guns may be fired over the parapet instead of through embrasures.

¹⁵ The magazine to the NW angle had been shot away and the powder exposed (Col. Talbert's research in the National Historical Society's Photographic history of the Civil War.)

¹⁶ soldiers in the civil war were either in state militia or mustered into federal service (or possibly both); this is possibly Wisc for the Wisconsin Guards.

Volunteers and Hartman & Harms of the German Volunteers. Many others have behaved nobly, but the daring of those I have specified came more particularly under my personal notice.

Capt. McMullen's Company, the "Wisc Guards" proved during the fight a most valuable addition to our garrison, and the "Montgomery Guards" under Capt. Guilmartin performed their duty most admirably.

I am yet ignorant of our destination, but presume it will be New York. I have the honor to be, Captain

Very respectfully

your obt - svt - ¹⁷

Charles H. Olmstead¹⁸

Col 1st Vol Reg of Ga

(over)

Hilton Head April 16th (1862)

I find on arriving at this place that it will be impossible for me to send the plan alluded to above, but I am permitted to speak of the number of guns brought against us by the enemy¹⁹ --- They were thirty six in number, all of the heaviest calibre 13 inch & 10 inch mortars²⁰, 8 inch & 10 inch columbiads and Parrotts & James rifled guns²¹. these last were in battery at King's Landing and to the terrible effects of their fire I attribute the disastrous results of the engagement. Masonry yielded like wood work before the projectiles from these guns.²² --- At some future day I hope to be able to be explicit on many points concerning which it would now be improper for me to speak. --- My officers and men have all been treated with much kindness since our capture,²³

Very Respectfully your obt - svt -

Chas. H. Olmstead

Col 1st Vol Reg of Ga

¹⁷ "your obedient servant" - a common term of respect in closing the letter, and post script that follows.

¹⁸ Charles H. Olmstead was the 26 years old Commander of the Fort (Col. Talbert's research).

¹⁹ Thirty hours and 5200 shots were fired at the fort, some walls were 7-1/2 feet thick (Col. Talbert).

²⁰ mortar, a cannon very short in proportion to its bore - for throwing shells at high angles (like fireworks).

²¹ rifled guns have spiral grooves cut into the barrel to give the projectile a rotatory motion rendering greater accuracy.

²² Col. Talbert read from Robert Paul Jordan's *Civil War* that bombardment and capture by Federals in April 1862 showed the ineffectiveness of masonry fortifications against the rifled cannon.

²³ Fort Pulaski, located on the coast of Georgia. Boatner's *Civil War Dictionary* (revised edition p. 94, 95), "In the harbor of Savannah, Georgia, Fort Pulaski readies itself for an attack by Federals [10 April 1862]. Commanded by General Quincy Adams Gillmore, the Northern assault takes place from a position opposite the fort of Tybee Island. The Confederates have about 40 guns but the Federals' long range guns and penetrating shells are no match for the masonry fort, which sustains heavy damage. The bombardment at Fort Pulaski begins at 8 in the morning and continues throughout the night, the Federal guns at Tybee Island begin stilled the following day at around 2 in the afternoon. Three hundred and sixty Confederates are taken prisoner, on Union soldier is killed, as is one Southerner." 13 April 1862: "Western Theater Fort Pulaski, Georgia is termed a free area by General David Hunter, providing for the confiscation and setting free of all slaves in the vicinity." The Naval History Division of the Navy Department, 1971 gives this information in their *Civil War Naval Chronology 1861-1865*: "Fort Pulaski, Georgia, surrendered after enduring an intensive tow day bombardment by Union artillery. Commander C.R.P. Rodgers and a detachment of sailors from the U.S.S. Wabash manned Battery Sigel the second day of the engagement and 'kept up a steady and well-directed fired until the fort hauled down its flag, at 2 pm.' The Navy gunners' participation in the action was at the invitation of Major General David Hunter, commander of the Army forces, and demonstrated once again the closeness of cooperation achieved by the two services. [p. II-47]"

Indiana County Historians

CCGS Member Dotty Baber forwarded her July 1992 copy of this list to be included in the Trail Breakers to help those researching in Indiana. An up-dated version (February 5, 1996) was procured from the Indiana Historical Society and is printed with their permission.

The County Historian Program is jointly sponsored by the Indiana Historical Bureau [Pamela Bennett, Indiana Historical Bureau, 140 N. Senate, Room 408, Indianapolis, IN 46204, (317) 232-2537] and the Indiana Historical Society [Tom Krasean, Indiana Historical Society, 315 W. Ohio Street, Indianapolis, IN 46202, (317) 232-1881]. The following list is alphabetical by county.

ADAMS

To be named

ALLEN

Michael Westfall
Allen County Historian
6806 Covington Creek Trail
Fort Wayen IN 46804
(219)484-6636

BARTHOLOMEW

Harry McCawley
Bartholomew County Historian
1130 Franklin
Columbus IN 47201
(812)379-5620

BENTON

Freeman Harold Furr
Benton County Historian
711 East 3rd Street
Fowler IN 47944

BLACKFORD

Dwight Mikkelson
Blackford County Historian
321 N High St.
P.O. Box 264
Hartford City IN 47348

BOONE

Rosemary Peterman
Boone County Historian
2202 Roselawn Drive
Lebanon IN 46052

BROWN

Bart Updike
Brown County Historian
P.O. Box 668
Nashville IN 47448

CARROLL

Phyllis Moore
Carroll County Historian
P.O. Box 277
Delphi IN 46923

CASS

Hubert Leslie
Cass County Historian
2732 East Broadway
Logansport IN 46947

CLARK

Carol Haas
Clark County Historian
Sellersburg Public Library
430 N Indiana
Sellersburg IN 47172

CLAY

Robert T. Moore
Clay County Historian
130 N. Washington
Brazil IN 47834

CLINTON

Helen Grove
Clinton County Historian
458 North Jackson Street
Frankfort IN 46041
(317) 654-8746

CRAWFORD

Richard Eastridge
Crawford County Historian
RR 1 Box 22-A
Taswell IN 47175

DAVIESS

L Rex Myers
Daviess County Historian

812 E National Highway
Washington IN 47501

DEARBORN

Doris W Marple
Dearborn County Historian
136 Tebbs Avenue
Lawrenceburg IN 47025

DECATUR

Pat Smith
Decatur County Hisotrian
122 W Sheidan Street
Greensburg IN 47240

DEKALB

John Martin Smith
DeKalb County Historical Society
PO Box 686
Auburn IN 46706
(219) 925-4560

DELAWARE

Jeff Harris
Delaware County Historian
P.O. Box 1266
Muncie IN 47308
(317) 282-1550

DUBOIS

Lillian Doane
Dubois County Historian
1529 Jackson Street
Jasper IN 47546

ELKHART

John Stahly
Elkhart County Historian
71346 State Highway 19
Nappanee IN 46550
(219) 288-4655

FAYETTE

Harry M Smith
Fayette County Historian
610 Marion Street
Cornnersville IN 47331

FLOYD

Ann Robison
Floyd County Historian
3308 Norwood Drive
New Albany IN 47150

FOUNTAIN

Robert Quirk
Fountain County Historian
R.R. 1 Box 132
Wingate IN 47994

FRANKLIN

Martha Shea
Franklin County Historian
650 East 8th Street
Brookville IN 47012

FULTON

Shirley Willard
Fulton County Historian
R 2 Box 28
Rochester IN 46975
(219) 223-4436

GIBSON

Alvetta S Wallace
Gibson County Historian
530 West Washington Street
Oakland City IN 47660

GRANT

Leslie Neher
Grant County Historian
113 East South A Street
(317) 674-4653

GREENE

To be named

HAMILTON

Joe H Burgess
Hamilton County Historian
384 North 11th Street
Noblesville IN 46060

HANCOCK

Joe Skvarenina
Hancock County Historian
710 South Brook Street Lot 8
Greenfield IN 46140

HARRISON

Frederick P Griffin
Harrison County Historian
116 E Walnut
PO Box 446
Corydon IN 47112

HENDRICKS

Susan Miller Carter
Hendricks County Historian
Plainfield Public Library
1120 Stafford Road
Plainfield IN 46168
(317) 839-6602

HENRY

Richard P Ratcliff
Henry County Historian
303 South Pearl Street
Spiceland IN 47385

HOWARD

Ed Riley
Howard County Historian
6070 E Center Road 300 S
Kokomo IN 46902
(317) 459-3106

HUNTINGTON

William Abbott
Huntington County Historian
1041 S Jefferson
Huntington IN 46750

JACKSON

Dr Loren W Noblitt
Jackson County Historian
401 E Walnut Street
Brownstown IN 47220

JASPER

Beulah Arnott
Jasper County Historian
128 S Augusta Street
Rensselaer IN 47978

JAY

Alyce J Jefferies
Jay County Historian
904 N Franklin Street
Portland IN 47371-1115
(219) 726-9530

JEFFERSON

Lee Rogers
Jefferson County Historian
PO Box 1, Canaan IN 47224

JENNINGS

Helen Horstman
Jennings County Historian
PO Box 313
North Vernon IN 47265

JOHNSON

Rachel S. Henry
Johnson County Historian
5990 E 500 N
Franklin IN 46131

KNOX

Robert R Stevens
Knox County Historian
LRC-22 Lewis Library
Vincennes University
Vincennes IN 47591
(812) 885-4173

KOSCIUSKO

Ronald Sharp
Kosciusko County Historian
1010 N Huntington
Syracuse IN 46567

LAGRANGE

J Scott McKibben
Lagrange County Historian
3630 S 200 E
Lagrange IN 46761

LAKE

Rebecca Crabb
Lake County Historian
3606 Belshaw Road
Lowell IN 46356

LAPORTE

Fern Eddy Schultz
LaPorte County Historian
5817 West Johnson Road
LaPorte IN 46350-8586

LAWRENCE

Maxine Kurse
Lawrence County Historian
Rt 15 Box 848
Bedford IN 47421
(812) 275-7637

MADISON

To be named

MARION

Harriet O'Connor
Marion County Historian
4451 Central Avenue
Indianapolis IN 46205
(317) 269-1757

MARSHALL

Linda lou Rippy
Marshall County Historian
430 Clark Street
Plymouth IN 46562

MARTIN

Robert B. Green
Martin County Historian
RR 3 Box 23
Loogootee IN 47553

MIAMI

Horace D. Cook
Miami County Historian
327 East Sixth Street
Peru IN 46970

MONROE

Pamela Service
Monroe County Historian
491 N. Washington
Bloomington IN 47408

MONTGOMERY

Stephen Jay Thompson
Montgomery County Historian
2005 State Road 55 North
Crawfordsville IN 47933
(317) 364-3591

MORGAN

Dale Drake
Morgan County Historian
1195 Robb Hill Road
Martinsville IN 46151

NEWTON

Velma Jean Dart
Newton County Historian
PO Box 320
Goodland IN 47948

NOBLE

Robert C Gagen Jr
Noble County Historian
PO Box 11
Albion IN 46701
(219) 636-2368

OHIO

Dillon R Dorrell
Ohio County Historian
Route 1
Rising Sun IN 47040

ORANGE

Wilma Davis
Orange County Historian
311 W main Street
Paoli IN 47454

OWEN

Linda Simmerman
Owen County Historian
35 West Hillside
Spencer IN 47460

PARKE

William E Davis
Parke County Historian
411 Jackson
Rockville IN 47472

PERRY

Mike Rutherford
Perry County Historian
Highway 37
Tell City IN 47586

PIKE

Sandra McBeth
Pike County Historian
413 S 5th St.
Petersburg IN 47567

PORTER

George E Neeley
Porter County Historian
1807 Clover Lane
Valparaiso IN 46383

POSEY

Glenn Curtis
Posey County Historian
9016 Schroeder Court
Mt Vernon IN 47620

PULASKI

Lynda Irving
Pulaski County Historian
Pulaski County Public Library
121 South Riverside Drive
Winamac IN 46996
(219) 946-6981

PUTNAM

John J Baughman
Putnam County Historian
704 Highwood Avenue
Greencastle IN 46135

RANDOLPH

Monisa Wisener
Randolph County Historian
RR 3 Box 61
Winchester IN 47394
(317) 584-1155

RIPLEY

Beatrice Boyd
Ripley County Historian
PO Box 83
Holton IN 47023

RUSH

James S Scott
Rush County Historian
RR 1 Box 199
Rushville IN 46173
(317) 629-2278

SCOTT

Joe Gibson
Scott County Historian
PO Box 25
Lexington IN 47138

SHELBY

Martha Ann Creed
Shelby County Historian
330 Shelby Street
Shelbyville IN 46176

SPENCER

Ellen J S Brown
Spencer County Historian
615 Main Street
Rockport IN 47635

St JOSPEH

Mary Renshaw
St Joseph County Historian
59215 High Pointe Drive
South Bend IN 46614

STARKE

Melba Shilling
Starke County Historian
3750 East 50 North
Knox IN 46534

STEBEN

Charles D Skove
Steuben County Historian
127 Powers Street
Angloa IN 46703

SULLIVAN

Harold Johnson
Sullivan County Historian
One Valhalla Lane
Sullivan IN 47882

SWITZERLAND

Janet Hendricks
Switzerland County Historian
59 Knox Ford Road
(812) 427-2626

TIPPECANOE

Nancy L Weirich
Tippecanoe County Historian
909 South Street
Lafayette IN 47901
(317) 742-8411

TIPTON

Donna Jean Ekstrom
Tipton County Historian
124 North Conde
Tipton IN 46072

UNION

Marcellene O'Toole
Union County Historian
107 East Union Street
Liberty IN 47353

VANDERBURGH

Dr Darrel E Bigham
Vanderburgh County Historian
University of Southern Indiana
8600 University Blvd
Evansville IN 47712
(812) 464-1773

VERMILLION

To be named

VIGO

Dorothy Clark
Vigo County Historian
520 Francis Ave. Ct.
Terre Haute IN 47804

WABASH

Ronald L Woodward
Wabash County Historian
574 Ferry Street
Wabash IN 46992

WARREN

Helen Baum
Warren County Historian
RR 1 Box 105
West Lebanon IN 47991

WARRICK

Kay F Lant
Warrick County Historian
6000 Lincoln Avenue
Evansville IN 47715

WASHINGTON

Willie Harlen
Washington County Historian
407 West Market Street
Salem IN 47167

WAYNE

Dr. Gertrude L Ward
Wayne County Historian
PO 14
Centerville IN 47330

WELLS

James W Foster
Wells County Historian
210 W Wiley Ave
Bluffton IN 46714

WHITE

William E. Parrish
White County Historian
RFD 1 Box 17
Idaville IN 47950

WHITLEY

Robert J Cassell
Whitley County Historian
1140 South 900 West
Larwell IN 46764

Greet These New CCGS Members:

Renew your membership now so you can be listed in the Directory.

NEW LIFE MEMBER:

Helen Erickson '96
10600 N.W. Lake Shore
Vancouver WA 98685
(360) 573-6841

B-124 Susan Bankhead

1846 S.E. 54th Ave.
Portland OR 97215
(503) 231-1768

NEW MEMBERS:

W-092 Melissa West
516 Tampa Way
Vancouver WA 98664-2257
(360) 695-1315

Susan Bankhead is one of CCGS's newest members. She will be CCGS's Federation of Genealogical Societies delegate. Susan belongs to the Association of Professional Genealogists and Genealogical Speakers Guild. She is teaching genealogy classes at Clark through the community education program. As are many CCGS members, Susan is also a member of the Forum.

CONDIT FAMILY TRAVELS THE OREGON TRAIL

Third in the series: As a part of the Oregon Centennial, the *Washington-County News-Times*, Forest Grove, Oregon, ran many articles. Among them were these letters and diary entries of the Condit family who took six months to travel from Wood county, Ohio, beginning March 19, 1854, arriving at their destination in the Willamette Valley on September 16th. Permission to re-print the series was obtained from Jim Hart, current editor of the *News-Times*. The first installment was printed in the Winter 1995-96, Vol. 22 #2 *Trail Breakers* issue. Continues next issue.

Wednesday, May 31st

Traveled all day over a wet, level prairie and stopped on Camp Creek, making 15 miles. Found plenty of grass here for our cattle. A man by the name of Roice joined us today with two yoke of oxen and one of cows. For several days we had not been troubled with wolves, but here they swarmed around us, making the night hideous with their howls. Still they passed around us at a respectable distance and did not offer to attack any of the stock.

Thursday, June 1st

This day we traveled 22 miles having crossed numerous streams, some small and some large and also the hardest sandy bluff we have yet tried and camped on the bank of the Platte.

Friday, June 2nd

Traveled 20 miles today over a prairie country. Did not cross any streams, but found several good watering places on the river. The road was very sandy, which made it heavy traveling. It also made me a good deal homesick, but had no disposition to turn back. Went into camp on the bank of the river ground for

the stock which is a great blessing.

Saturday, June 3rd

Today we traveled 22 miles, having passed ancient ruins, or, as some call the, Ruins Bluff, which present to the eye of the beholder something very much like the ruins of ancient towers, fortifications, battlements, etc. Then we went up the river and camped in sight of McFarland's Castle and Chimney Rock, which are truly objects of curiosity to the weary traveler while crossing over some of these long stretches of prairie.

Sabbath, June 4th

Rest today and attend with pleasure and I trust, with profit, to our religious exercises. But Roice, who had joined our company a few days before, left us, thinking he had not time to rest on the Sabbath. So we bid him goodbye, but still not with a glad heart, as we thought he was violating one of God's commands.

Monday, June 5th

Traveled 25 miles today over a very good road when we again came to the Platte opposite the far famed Chimney Rock. It stands on the south side of the

river about 2 miles from it and though we were so far away we had a tolerably clear view of it by the aid of a good glass and it did not seem to us to lie very wonderful. It presents to the eye of the beholder a curious form, but it is only a mass of granite, thrown up without much regularity. Still it serves to attract the attention of the weary traveler and diverts his mind from more melancholy subjects.

Tuesday, June 6th

Traveled 22 miles today, having passed a cluster of bluffs south of the river which had the appearance of very ancient ruins, but upon examination we could find nothing that the hand of the man had done and we had to look to nature and to nature's God to solve the mystery of their formation.

Wednesday, June 7th

Rained a little this morning, but we moved out of camp and made 11 miles over a very rough road. At noon we were very much alarmed at one of the children going off without leave and, as there was a band of Indians roving about, it caused us to move on in haste, but we

found her all right on the side of the road gathering posies.

Thursday, June 8th

Last night we had a very hard squall of wind which tried out tents, but they stood up against the shock and we received no harm. This day we traveled over a very rough, sandy road and camped on this west of Rawhide Creek. This day has been cold enough for October. We also found plenty of wood here, which is the first for over two weeks, or about 200 miles.

Friday, June 9th

Today we reached Fort Laramie where we mailed a number of letters to our friends in the east. Here we also found a large village of Indians. Then we passed on 3 miles up the Platte and stuck our stakes on as pretty a flat of land as can be found in this region, hemmed in by high bluffs on the west. The road today was very sandy and very heavy to travel on.

Saturday, June 10th

Entered the Black Hills this morning and after going 7 or 8 miles we came to a cold spring and then about 8 miles farther we came to the river, but finding no grass, we filled our vessels with water and went back among the bluffs where we found grass and a dry camping ground. This day one of our boys was taken sick with fever, but a timely application of calomel and pills relieved him.

Sunday, June 11th

Our sick boy is better this morning and for want of water for our stock. We were

compelled to go about 8 miles when we came to some springs of good water but no grass. So we went about 5 miles farther to little Spring Creek, where we went into camp making about 13 miles of a Sabbath-day's journey.

Monday, June 12th

Left Spring Creek and went 16 miles up the river and went into camp where we had not much grass. This day we heard there were 500 Indians stationed on the road to compel emigrants to pay toll for passing a certain point. We judged, however, that it was for the purpose of inducing us to cross at their ferry and our judgment proved to be correct, for the Indians we found to be peaceable and permitted us to pass through with out doing any harm. However, that night we set a double guard, but were not disturbed.

Tuesday, June 13th

All in tolerable health, except some of the children who have a slight (attack) of the diarrhea. No Indians harmed us today. Morning cool and cloudy. Made adequate miles today and camped in a creek 2 miles above Deep Bluff Creek. Thundered and rained very hard this evening, which made us a little melancholy. Saw a great many Indians today, but they all seemed to be perfectly peaceable and friendly.

Wednesday, June 14th

Two of our children sick this morning, but not so bad as to stop us from going forward. Gave them some medicine which broke the fever. We had a hard thunder and hail storm today and

as we came to the foot of the last of the Black Hills, we came to the bed of a stream which was nearly dry when the first of the train approached it, but on looking up the stream we saw the water rushing down in a torrent as if a mill dam had broke loose. And before the last of the train was over it was nearly impassable.

Thursday, June 15th

Last night it rained and hailed very hard, but this morning is pleasant. Crossed, several small streams in going 5 miles. At the last one we found a large cottonwood canoe. We pitched out tent here and the canoe being split up we soon had a fire to dry clothes and cook and bake. Here found a young gopher, the first we have seen and a little kind of squirrel which is different from any we have seen.

Friday, June 16th

Our sick ones better. Morning cool but pleasant. All rest and in better spirit than we were yesterday. Traveled 20 miles over a rough road and camped at a small creek near the river. Road crowded with men and cattle today.

Saturday, June 17th

This morning we started early being well rested and our sick ones being better. Road full of trains, but we passed a great many of them as we were not so much encumbered as they were. We made about 20 miles and went into camp on the bluff above the ford nearly McKenzie's. We were all tired and will to rest over the Sabbath.

NEW BOOKS AT CCGS by Joanne Bortniak

These new acquisitions have been reviewed by Joanne Bortniak. Those marked with an R or Ref will be kept in the reference section of the CCGS library. The library is located in the historical society building at 1511 Main Street, Vancouver. Other books will be available for members to check out after a short time on the "new books" shelf.

325.2 The ALSACE EMIGRATION BOOK VOL I

Sch Compiled by Cornelia Schrader-Muggenthaler.
Presented by George and Alberta Dawson. The book contains mainly emigrants from Upper and Lower Alsace, but also includes families who migrated through Alsace from Germany, Switzerland and other countries. Many towns had both a French and a German name such as Soultz and Sultz. Many names were spelled by clerks using a phonetic spelling. 285 p. 1989.

979.5 THE CARDINAL 1916 Yearbook for Lincoln

OR High School Portland, OR Pictures of the graduating class, school happenings, sports, stories, poems, societies, and advertisements from businesses in the area.

976.4 COLLIN COUNTY: PIONEERING IN NORTH

Hal TEXAS By Capt. Roy F. Hall and Helen Gibbard Hall. This is another Heritage Books publication. The index for this book is already on the shelf at the library. Life and customs, lists of pioneer settlers, lists of the first soldiers from Collin County. Organizations, and growth brief history, brief biographies, Over 200 genealogies. Pictures. There is a table of Contents. 299 p. 1994.

R 312.3 CEMETERIES OF THE U.S. A GUIDE TO

Bur CONTACT INFORMATION FOR U.S. CEMETERIES AND THEIR RECORDS.

Deborah M. Burek, Editor. The book is laid out in two parts. The first is in order of the states, naming counties, and the cemeteries in each. Name, address, phone, and in most cases, who to contact. Many tell the years of operation, affiliations, services, and if records are available for searches. The second part is an alphabetical index of cemeteries by name, followed by town, state and county with the number of the above listing. There are also Territories, and a few foreign Cemeteries, state Government regulatory offices and districts, religious denominations and affiliations, and non-sectarian. 1607 pages. 1994.

929.2 THE EDWARD AND LEONA LA LONDE

LaL FAMILY - from 1880 in Nebraska to today in the Northwest Recollections and discoveries by their grandchildren Compiled and edited by William E. La

Londe 1995. Presented by William E. La Londe. Family history, anecdotes, many pictures and family ancestry move the La Londe and Du Bois line from 1880 to the present time. 70 p.

929.13 GENEALOGICAL PERIODICAL ANNUAL

Tow INDEX Vol 31 1992 Leslie K. Towle, Compiler, Laird C. Towle, ED. Presented by Lorie Okel. The index is based primarily on surname, locality, and topical categories. 284 p. 1996

929.3 GRANDMA'S SCRAPBOOK WARREN JOSIAH

Bai BAILEY 1860-1956 ANNIE ANNETTIE HANEY 1870-1960 By Bessie Harriet Bailey Loren and Nancy K. Stout. Presented by Nancy Stout. Includes family history, newspaper articles, pictures, Marriage certificates, family stories, and family pages for descendants of Warren and Annie. Corrections and additions added in 1996. There are still a few copies available for \$18.00 which includes shipping costs. 119 p. 1995.

929.13 HANDBOOK OF GENEALOGICAL SOURCES

Sch By George K. Schweitzer, Ph.D., Sc.D. 132 types of information are listed in the table of contents. How to make use of the various types of information that is available and how to get started in genealogy is found in fairly short sections. Information is concise and to the point. 252p. 1996.

R 979.7 HISTORY OF WASHINGTON by Rev. H. K.

Hin Hines, D. D. Presented by the Margareta Zimmerman family. This history of the state includes biographical sketches for about 930 people with pictures and illustrations of about 40. 933 p. 1893.

929.13 MARYLAND GENEALOGICAL RESEARCH

By George K. Schweitzer, Ph.D., Sc.D. Table of Contents. Starts with Maryland geography, history counties. Continues with types of records that are available, genealogical libraries, research procedures and county listings. 211 p. 1991

979.7 NAME ON THE SCHOOLHOUSE An anecdotal list of some historic names of schools in WA state
WA Compiled & Ed. by Kenneth L. Calkins. Presented by the Ft. Vancouver Historical Society. The information came from the counties, pre-college private, parochial and public schools, having distinctive names with historic connections. Not all possible schools are included. 174 p. 1991

929.13 NEW YORK GENEALOGICAL RESEARCH
Sch By George K. Schweitzer, Ph.D., Sc.D. New York geography and history through various periods. Types of records available, where to locate them. State and genealogical libraries, County listings. Reference to other books that will be of help are made. 250 p. 1995.

R973.7 ROLL OF HONOR NUMBERS I-IV Names of Gen Soldiers who died in the defense of the American Union, Interred in the National Cemeteries. reprinted with alphabetical index to Places of Interment of deceased Union Soldiers in the various States and Territories, as specified in Rolls of Honor Nos. I-XIII. Issued from the Quartermaster General's Office between June 15, 1865 and August 27, 1867. There are several books included, and the page numbering is for each book. (1869) Reprinted 1994.

942 THE ROYAL BASTARDS OF MEDIEVAL
Wil ENGLAND By Chris Given-Wilson and Alice Curteis. Presented by Richard N. Grafton. This is a listing of royal illegitimate children, possible ones and probably not, but maybes. Those that were definite were accepted into society and treated with honor, but they couldn't inherit. Much intrigue surrounded the throne. Index of names & places. Subject index. 195 p. 1984.

929.1 THE UNITED STATES SERIAL SET A
Gen neglected resource. Sometimes called the Congressional Serial Set, it consists of reports and documents of the U.S. Senate & U.S. House of Representatives. Private claims for relief, these bills were submitted on behalf of individuals wanting special consideration of their losses or oppression. Data might be Vital events, family data, military information, inventory of losses, historical background of family and circumstances.

920 UPPER MIDWEST GERMAN BIOGRAPHICAL
Tol INDEX By Don Heinrich Tolzmann Sources focus on IL, IA, MI, MN, & WI. Index is arranged alphabetically, followed by a symbol that refers to the work where the name was found. The sources are given by the symbol for it. 124 p. 1993 Heritage Books.

979.6 WILDER, IDAHO LOOKING BACK: The
Cad beginning through 1955 Compiled by Bonnie Cade. Presented by Ann Graham. Pioneers in and around Wilder. Excerpts from the Wilder Herald. A short history with many pictures and news clippings. 188 p. 1989.

VERTICLE FILE

979.7 'FORTY-NINERS MEMORIES "BATTLE
WA GROUND HIGH" Includes a program from 1949 graduating class. an up date on many of the members and several pages of "Do you remember when we ..." A memories booklet of their 35th reunion. ACC 4533

929.2 PIONEERS OF CLARK COUNTY WA
WA Compiled and presented by Mary Huston. 1995. Alphabetical order of early arrivals including date of arrival, husband, wife, area settled ACC 4532

929.1 PRESERVING THE PAST FOR OUR FUTURE
HERITAGE TRUST Presented by Mary Huston. Basic Handbook for Clark County Property Register. A historic register, both for Vancouver and a National register. Tips on how to research your historic property...what questions to ask, where to go to find the answers. Common architectural terms. quick physical description form. ACC4531

929.2 SNIVELY, THORNTON, LeBLANC & BURG
Genealogy of John M. Shively, 1804-1893. first postmaster west of the Mississippi- Astoria 1847. LeBlanc genealogy in French, English translation. Thornton genealogy, Burg genealogy. Clippings, newspaper pictures. ACC 4530

SALT LAKE CITY - HERE WE COME!

In addition to CCGS's usual January trip, an October trip is begin offered. The trip is for doing genealogical research at the Family History Center. The October dates are Wednesday, October 9 to October 17, 1996.

If you are interested, check the June CCGS Newsletter or September one. Can't wait? Give Irene Page (835-7642) or Jennifer Warren (573-1253) a call for more information!

They's like to know if you are interested in a trip to the Seattle Library (and Archives), Allen County Library, etc. Suggestions? They'd like to hear from you.

KNAPP MORTUARY RECORDS

Extracted by CCGS member Gerry Gilman, the Knapp-Gunderson-Hamilton Funeral Home records were first printed in the *Trail Breakers* Winter 1989/Vol. 16 #2 issue. The history of the funeral home has been printed in the first volume of the Knapp Mortuary Funerals, the Hamilton Funeral Home Records, and the Hamilton Family history was printed in Vol. 20 No. 2 of the *Trail Breakers*. In 1960 the Knapp Mortuary merged with Mylan-Gunderson-Lanier and is presently under the Hamilton-Mylan-Knapp-Gunderson Funeral Home, located on the Corner of 11th and Columbia Streets in Vancouver, WA. Three volumes have now been printed: *Knapp Mortuary Funerals 1907-1925*, *Knapp Mortuary Funerals 1926-1940*, and *Hamilton Funeral Records 1927-1929*.

BACON, ROLLAND EVERETT

b. 4/9/1898 Oregon City, [Clackamas County], Oregon, d. 6/15/1943, age 45y 2m 6d, [married to (1) Dr. Mabel Nancy Sparks (2) Irma Murkie born in Illinois], was the Personnel Manager for the Bingham Pump Company, Protestant - had lived in the State for 45 years, died at the Portland Sanitarium, no cause listed attended by Dr. Warren Hunter of Portland, Oregon, funeral 4/17/1943 (Thursday) 10 AM at Knapp Chapel with Reverend Walter Givens of Vancouver, buried at Park Hill Cemetery A (has marker). (his son Grant William Bacon (11/14/1918-3/3/1919) died of malnutrition buried in Park Hill Cemetery A 3). Ordered by and charged to the mother Dr. Mabel Nancy Bacon of 240 "C" St., Vancouver, Clark County, Washington. **Parents were Grant C[olfax] Bacon born in Oregon City, [Clackamas County], Oregon and [married 6/12/1887] Mabel N[ancy] Sparks [4/4/1869-8/29/1955] born in Algona, [Kossuth County], Iowa. [She was a Chiropractor. She was the daughter of Edwin Sparks 10/26/1829-2/19/1891] born in Aberdeen, Adams County, Ohio a Civil War Vet Sgt. Co. C 21st Iowa Infantry [who was the son of Levi Sparks and Zulima Craig Moore] and Priscilla Spurgeon (12/7/1832-1/15/1919) daughter of Elias Spurgeon and Jane Likens both born in Ohio and sister to Mathias Spurgeon). The Edwin Sparks came to Clark County, Washington in 1874.]**

NEWTON, OLIVER P.

b. 9/4/1866 White Cloud, Kansas, d. 6/15/1943, age 76y 9m 11d, married to Grace Newton (1881-1961 has marker next to husband), farmer, Protestant, lived at Rt. #2 Battle Ground, Clark County,

Washington, died at home of a coronary occlusion and the flu attended by Dr. W.D. Clark of Battle Ground, funeral 6/17/1943 (Thursday) 1 PM at Knapp Chapel with Reverend C.C. James of Battle Ground, buried at Wilson Bridge/Manor Cemetery (has marker). Ordered by and charged to wife Grace Newton. **Parents were Elias Newton born in New York and mother's name not known.**

GOODWIN, JAMES MONROW

b. 10/7/1866 Texas, d. 6/16/1943, age 76y 8m 9d, widower, retired farmer, Protestant, lived with daughter Mrs. Alice Murphree 524 Morrison Road, Vancouver, Clark County, Washington - had lived in the State for 10 weeks, died at the Northern Permanente Hospital in Vancouver, no cause listed attended by Dr. Burgess of Vancouver, no funeral service, remains were sent to Anson, Texas 6/17/1943 for burial in an Anson, Texas Cemetery. Ordered by and charged to Mrs. Alice Murphree. **Parents were not listed.**

SAKRISON, JOHN

b. 1/10/1864 Finland, d. 6/21/1943, age 79y 5m 11d, [widower of Minnie Sakrison (7/24/1862-2/1/1937 born in Finland daughter of Matt Velma, has marker next to husband)], farmer, Protestant, lived at Brush Prairie on his farm -had lived there for 45 years, died at the Portland General Hospital in Portland, Multnomah County, Oregon with gangrene of the right foot and senility [Note: his wife died of diabetes with gangrene in the left foot], attended by Dr. Donald Nickelsen of Portland, funeral 6/23/1943 (Wednesday) 1 PM at Knapp Chapel with Reverend Matt Salmi of Portland, buried at Elim Cemetery 6/2

(has marker). Ordered by and charged to daughter L.M Beker of 1029 Stafford Rd. Portland, Oregon. His children were William Sakrison, Mrs. J.B. Kasasi of Pendleton, Oregon, Mrs. Jacob (Johanna S.) (1887-10/16/1951) of Battle Ground, Washington, and Mrs. L.M Becker of Portland, Oregon. **Parents were Sakri Sumonelo and mother's name not known both born in Finland.**

WILSON, RALPH J.

b. 11/1/1877, d. 6/2/1943, married to Addeana Wilson [12/22/1883-9/7/1960 has marker in Section E, retired soldier Corp. Troop G. 11th Reg I,] died at Hillsboro, Washington County, Oregon, no Doctor listed, remains were delivered by Hearse from Donaldson & Sewell of Hillsboro for funeral 6/23/1943 (Wednesday) 3 PM at Knapp Chapel with Reverend C.C. James of Battle Ground, buried at Park Hill Cemetery E (has marker). Ordered by and charged to wife Addenana Wilson. **Parents were not listed.**

ALLEN, OZIE VERA

b. 10/22/1898 (Prot listed), d. 6/25/1943, age 44y 8m 3d, married to Glen S. Allen, housewife, Protestant, lived at 2214 Broadway St., Vancouver, Clark County, Washington - had lived in the State for 1 year, died at St. Joseph Hospital in Vancouver of peritonitis caused by a fecal fistula attended by Dr. Frank Boursma of Vancouver, remains were shipped to Santa Barbara, Santa Barbara County, California 6/25/1943 for funeral and burial in a Santa Barbara Cemetery. Ordered by husband Glen S. Allen. Paid by Holland Walch & Ryce Co. **Parents were Richard L. Hammer born in Texas and Susie Finley.**

EAGER, HERBERT MANLEY

b. 4/18/1859 Samson, North Carolina, d. 6/29/1943, age 85y 2m 11d, retired, Protestant, lived with son Marion C. Eager at 3201 "M" St., Vancouver, Clark County, Washington - had lived in the State for 32 years, died at the Clark County General Hospital of a cerebral thrombosis and diabetes attended to by Dr. John Harrison of Vancouver, funeral 7/1/1943 (Thursday) 2 PM at Knapp Chapel with Reverend Loren K. Grimes of Portland, Oregon, remains were

cremated at the Portland Crematorium in Portland, Oregon. Ordered by and charged to Marion C. Eager and the State of Washington Old Age Fund. **Parents were James Wilson Eager and Rosana Rush.**

PATTON, MARY FINLAYSON

b. 1/13/1859 Newton, [Jasper County], Iowa, d. 7/6/1943, age 84y 5m 23d, widow, housewife, Protestant, lived with daughter Mrs. Lela Egbert at Rt. #1 Box 154 Vancouver, Clark County, Washington - had lived in the State for 34 years, died at home of chronic myocarditis and arteriosclerosis attended by Dr. Herbert Lieser of Vancouver, funeral 7/8/1943 (Thursday) 1 PM with Reverend Stanley Mook of Vancouver, remains were cremated at the Portland Crematory in Portland, Oregon. Ordered by and charged to daughters Mrs. Lela Egbert and Mrs. Mae G. Vinson. **Parents were Thomas Finlayson and Margaret Patton both born in Scotland.**

LUDEMAN, ELLA

b. 2/4/1887 Kelso, [Cowlitz County], Washington, d. 7/10/1943, age 56y 5m 6d, widow [of Master Sgt. Albert Ludeman (5/29/1882-1/23/1941 has marker #842 at Post Military Cemetery son of Charles and Sara Ludeman both born in Germany)], housewife, lived at 1414 "X" St., Vancouver, Clark County, Washington - had lived in the State for 17 years, died at home of carcinoma of the cervix attended by Dr. Herbert Lieser of Vancouver, funeral 7/13/1943 (Tuesday) 1 PM at Knapp Chapel with Reverend L.C. Weitzenkamp of Vancouver, internment listed as Park Hill but found listing for Post Military Cemetery #844. [also buried is her daughter Luella Jean Ludeman (1/30/1929-2/2/1929 has marker #843).] Ordered by and charged to Miles Carroll of 1414 "X" st., Vancouver, Washington. **Parents were Henry Cronk born in Indiana and (....) Evinter/Winter? born in Illinois.**

MILLER, ROBERT PAUL

b. 6/17/1912 Seaside, [Clatsop County], Oregon, d. 7/13/1943, age 31y 0m 26d, married to Bessie M. Miller, welder at the Kaiser shipyard, lived at 3006 K East 12th St., Vancouver, Clark County, Washington - had lived in the State for 31 years, died at the

Northern Permanente Hospital of an anesthetic accident contributory cause was polypuses (?) attended by Dr. Paul R. Patterson of Vancouver buried at Park Hill Cemetery Section E (has marker). Ordered by and charged to wife Bessie M. Miller. **Parents were Fred Miller born at McMinnville, [Yamhill County,] Oregon and Chatta Knifong - born in Tillamook, [Tillamook County], Oregon.**

RAYMOND, REGINALD CLEO/[JACK C.]

b. 3/7/1901 Atwood, [Rawlins County], Nebraska, d. 7/12/1943, age 42y 4m 5d, divorced, cement finisher and building contractor, lived at 508 W. 6th St., Vancouver, Clark County, Washington - had lived in the State for 2 years, died at the Western State Hospital at Steilicum, Pierce County, Washington of psychosis syphilliction and meningitis attended by Dr. Bert Moody of Tacoma, Washington, funeral 7/17/1943 (Saturday) 1- AM at Knapp Chapel With Reverend Charles Stanley Mook of Vancouver, buried at Park Hill Cemetery Sec. E (has marker). Ordered by Reno Raymond of 3440 Columbia Ave., Vancouver. Charged to Reno Raymond, Mrs. Edith Raymond, Mrs. Glen Johnston, Mrs. Rula McCartin and Mrs. Ken Johnson. **Parents were Charles I. Raymond (1868-1942 born in Waco, Wisconsin [buried in Section D has marker] and Edith Finley Raymond [1/2/1871-9/7/1959] born in Adams County, Iowa. [Has marker in Section J.]**

LOSS, EDSON P.

b. 8/6/1853 Saratoga County, New York, d. 7/18/1943, age 89y 11m 12d, widower, retired farmer, Protestant, lived with son Ray Loss at Rt #2 Box 446 Vancouver, Clark County, Washington - had lived in the State for 8 months, died at home of carcinoma at the head of the pancreas attended by Dr. Henry Skinner of Battle Ground, funeral 7/21/1943 (Wednesday) 10 AM at Knapp Chapel with Reverend Fred C. Taylor of Vancouver, remains were cremated at the Portland Crematorium and the ashes sent to William L. Yeaman of Logan, Iowa. Ordered by and charged to son Ray Loss. **Parents were Benjamin G. Loss born in New York and mother's name not known.**

SALISBURY, WILLARD MARK

b. 4/20/1857 Whitewater, [Walworth County], Wisconsin, d. 7/21/1943, age 86y 3m 1d, widower, retired accountant, Protestant, lived with daughter Helen Salisbury at 1700 E. 7th St., Vancouver, Clark County, Washington - had lived in the State for 32 years, died at St. Joseph Hospital of a renal block attended by Dr. Herbert Lieser of Vancouver, funeral 7/23/1943 (Friday) 1 PM at St. Luke Episcopal Church in Vancouver with Reverend Charles S. Mook of Vancouver, buried at Park Hill Cemetery (has marker with Atlanta B. Salisbury (1855-1928) and Helen M. Salisbury (1886-1946). Ordered by and charged to daughter Helen Salisbury and the estate. **Parents were Ansel Salisbury and Olive Dane.**

COFFIELD, ROSE ANNA

b. 10/12/1892 Fulton, Washington, d. 7/24/1943, age 50y 9m 12d, married to Jess L. Coffield, housewife, Protestant, lived at Rt. #1 Box 28 Vancouver, Clark County, Washington - had lived in the State for 1 year, died at the Portland General Hospital in Portland, Multnomah County, Oregon of a carcinoma attended by Dr. Nickelsen of Portland, funeral 7/28/1943 (Wednesday) 2 PM at Knapp Chapel with Reverend James M. Bennett of Vancouver, ordered by and charged to husband Jess L. Coffield. **Parents were John Newton Cole born in St. Joseph, Buchanan County, Missouri and Nancy Richards born in Missouri.**

BECKER, ANTHONY D.

b. 8/13/1866 New York, 8/4/1943, age 76y 11m 21d, married to Estella Becker [5/1/1872-2/19/1955 born in Pennsylvania has marker in Section E], retired, lived at 703 E. 28th St., Vancouver, Clark County, Washington - had lived in the State for 23 years, died at home of chronic myocarditis attended by Dr. Herbert Lieser of Vancouver, funeral 8/6/1943 (Friday) 1 PM at Knapp Chapel with Reverend Paul Kunzman of Vancouver, buried at Park Hill Cemetery E 261-4 (has marker). Ordered by sons. Charged to wife Estella Becker. **Parents were David Becker and Siluina Caine/Carnay? both born in New York.**

STEWART, MARY C.

b. 2/2/1867 Pennsylvania, d. 8/10/1943, age 76y 5m 19d, widow, housewife, lived at Rt. #4 Box 620 Vancouver, Clark County, Washington - had lived in the State for 2 years, died at St. Joseph's Hospital in Vancouver, Washington of broncho pneumonia and carcinoma metastasis attended by Dr. Turk of Vancouver, funeral 8/13/1943 (Friday) 1 PM at Knapp Chapel with Reverend B.J. Fike of Vancouver, buried at Riverside Cemetery in Portland, Oregon. Ordered by and charged to Mary E. Cleaver 2610 NE Hancock Ave., Portland, Oregon and the State of Washington Old Age Fund. Parents names were unknown but were born in Pennsylvania.

MARTIN, ELI PATTON

b. 10/9/1876 North Carolina, d. 8/11/1943, age 66y 10m 2d, married to Dona S[ara Martin (1893-1971 has marker in Section E)], farmer, lived at Rt. #2 Box 610 Vancouver, Clark County, Washington - had lived in the State for 25 years, died at St. Joseph's Hospital in Vancouver of cardiac decompensation attended by Dr. O'Hara of Vancouver, funeral 8/14/1943 (saturday) 10:30 AM at Knapp Chapel with Reverend R. Rogers Irvin of Vancouver, buried at Park Hill Cemetery. Ordered by and charged to wife Dona S. Martin. Parents were Eli [Martin] and mother's name not known but she was born in North Carolina.

SUHL, FRANK

b. 1/23/1863 Illinois, d. 8/14/1943, age 80y 6m 21d, retired, residence not listed but had lived in the State for 55 years, died at the Clark County, General Hospital of myocardial failure attended by Dr. Cone of Vancouver, funeral 8/18/1943 (Wednesday) 1 PM at Knapp Chapel with a Mt. Hood Lodge #32 F.& AM service, remains were cremated at the Portland Crematorium. Ordered by the Mt. Hood Lodge #32 F.& A.M., W. Bates and the State of Washington Old Age Fund. Parents were not listed.

RICHARDSON, WILMONT BROOKINGS

b. 4/12/1884 [South Dakota], d. 8/22/1943, age 59y 4m 10d, married to Mema [Richardson (1890-1976 has marker next to husband)], parole officer of the

Superior Court, Christian Science, lived at Rt. #3 Box 143 Vancouver, Clark County, Washington - had lived in the State for 38 years, died at home of a cerebral hemorrhage attended by Dr. Clyde Hutt of Vancouver, funeral 8/26/1943 (Thursday) 2 PM at Knapp Chapel with a Christian Science Reader, buried at Vancouver City Cemetery NW 32-1 Line 14 (has marker). Ordered by and charged to wife Mema Richardson. Parents were Frank L. Richardson and Laice/Louise? Howard both born in Maine.

MEAGHER, SARAH ELLEN

b. 11/8/1873 England, d. 8/28/1943, age 69y 9m 20d, married to James W. Meagher [1847-1948 has marker in section B], housewife, Protestant, lived at Rt. #6 Box 794 Vancouver, Clark County, Washington - had lived in the State for 32 years, died at the Clark County General Hospital of acute pancreatitis and uremia attended by Dr. R.W. Armstrong of Vancouver, funeral 8/31/1943 (Tuesday) 1 PM at the St. Luke Episcopal Church with Reverend Charles S. Mook of Vancouver, buried at Park Hill Cemetery Sec. b (has marker). Ordered by and charged to husband J.W. Meagher and the State of Washington Old Age Fund. Parents were Daniel/David? W. Aspland born in England and Dora Haynes born Missouri.

EVEN, MATHIAS (MATTHEW)

b. 12/31/1886 Germany, d. 8/30/1943, age 56y 7m 29d, divorced, carpenter, Protestant, lived at 6652 E. 10th St., Vancouver, Clark County, Washington - had lived in the State for 6 months, died at Vanport, Multnomah County, Oregon in an auto accident attended by the Portland coroner of Portland, Oregon, funeral 9/4/1943 (Saturday) 10 AM at Knapp Chapel with Reverend James M. Bennett of Vancouver, buried at Park Hill Cemetery Section E (has marker). Owner of lot is McGrevy Even. Ordered by his children. Charged to consignment and War Bonds and George E. Even of the U.S. Army. Parents were not listed.

MINOR, GEORGE LA MONTE

b. 4/19/1916 Washington, d. 9/3/1943, age 27y 4m 14d, single, worked for the Columbian Newspaper in

Vancouver, Washington, Lutheran, lived with parents at 704 E. 18th St., Vancouver, Clark County, Washington - had lived in the State for 27 years, died at home of a strep infection of the heart attended by Dr. Hutt of Vancouver, funeral 9/7/1943 (Tuesday) 2 PM at Knapp Chapel with Reverend O.P. Stavaas of Vancouver, buried at Vancouver City Cemetery NW 109-1 Line 2 (has marker). Also buried in Plot 109 are his mother and father. Ordered by father Le Roy Minor. Charged to mother Mrs. L.R. Minor. **Parents were Le Roy [Minor 1896-1969] born in Missouri and Olga [S.] Kramer born in Texas.**

WORK, CLARA E.

b. 6/3/1872 Iowa, d. 9/10/1943, age 71y 3m 7d, single, Protestant, lived at 7100 E. 37th Ave., Vancouver, Clark County, Washington - had lived in the State for 17 years, died at the Clark County General Hospital of septicemia and secondary endangeltis attended by Dr. R.W. Armstrong of Vancouver, funeral 9/14/1943 (Tuesday) 1 PM at Knapp Chapel with Reverend O.R. Hughart of Portland, buried at Park Hill Cemetery (nomarker). Ordered by his brother. Charged to the State of Washington. **Parents were John Work and Ruth Huckleberry both born in Indiana.**

KNAPP, EARL B[ARRY] Lt.

b. 1916 Washington, d. 9/16/1943, age 27y, single, Lieutenant with the United States Army, Christian Science, lived in Vancouver, Clark County, Washington - was a residence of the State for 27 years, died at Luke Field in Arizona in an airplane accident attended by an Army Doctor stationed in Phoenix, Arizona, remains sent to Knapp Funeral Home for funeral 9/24/1943 (Friday) 10:30 AM with a Military service and Christian Science Reader, buried at Park Hill Cemetery E 251-1 (has marker). Ordered by and charged to the U.S. Government. **Parents were R[oyall] B[elding] Knapp [1890-1954 has marker in Section E.] and mother was not listed.**

GROAT, MINOR EARL

b. 8/1891 [Clark County], Washington, d. 9/19/1943, age 52y 1m 13d, married 12/19/1917 to Lillian "Lillie" [Hester Ayers Groat (6/1900-1965 born at

Ridgefield, Clark County, Washington daughter of William M. Ayers and Florence L. Williams Ayers (1886-1916 she has a marker at Ridgefield Cemetery - no marker for William . Another daughter, Edith G. Ayers, married Minor Groat's brother Raymond Jeremiah Groat who was killed in 1925 in a logging train accident], logger, in 1917 was a mechanical engineer, Protestant, lived at 222 SE 141 Ave., Portland, Multnomah County, Oregon, died at Emanuel Hospital in Portland, Oregon of heart failure attended by a doctor from Portland, funeral 9/22/1943 (Wednesday) 1 PM at Knapp Chapel with Reverend Samuel A. Linge of Ridgefield, buried at Brush Prairie Cemetery (side section has marker). Ordered by wife Lillie Groat. Charged to wife.. **Parents were George [Henry Groat born 4/24/1864] in Buffalo, [Erie County], New York [died 10/16/1929 (son of Jeremiah L. Groat (2/13/1826-10/30/1904 a Civil War Vet 13th New York Artillery as was his brother, Uriah D. Groat and his mother was Mary Ann Kerr 5/31/1834-1/10/1916 all have markers in Brush Prairie Cemetery. The family came west in 1868). and married (1) 9/11/1886 in Clark County, Washington] Mary [E.] Smith [born in 1864 at St. Joseph] Missouri [died in 1898 (the daughter of John A. Smith) Both George Henry Groat and Mary E. Smith Groat are buried at Brush Prairie Cemetery. George married (2) 10/9/1899 Phebe Caroline Van Atta Cresap (the divorced wife of Robert Vinton Cresap, she had seven Cresap children).]**

PALMQUIST, EMMA OTT

b. 6/22/1863 [Sandryo], Sweden, d. 9/19/1943, age 80y 2m 27d, married to John Palmquist (no marker at Elim Cemetery), housewife, Lutheran, lived at Brush Prairie, Clark County, Washington - had lived in the State for 30 years, died in Seattle, King County, Washington of a cerebral hemorrhage no doctor listed, funeral 9/23/1943 (Thursday) 2 PM at Knapp Chapel with Reverend Rinehard of Brush Prairie, buried at Elim Cemetery 2/14 (has marker). [Also in same Plot is John J. Ott (1847-1912) who was probably her father for the lot was purchased by Mrs. John (Emma Ott) Palmquist]. Ordered by and charged to Mrs. Edith Helmsberg of Brush Prairie, Washington and Joe E. Hall. **Parents were not listed.**

PEABODY, GLEN ALLEN

b. 4/7/1943 Washington, d. 9/24/1943, age 5m 17d, Child-boy, lived at 1011 East 26th St., Vancouver, Clark County, Washington - had lived in the State for his entire life, died at St. Joseph's Hospital of mongolian idiocy attended by Dr. Frank Boersman of Vancouver, funeral 9/27 1943 (Monday) at grave site at Sunnyside, Washington. **Parents were Kenneth Peabody born in Nebraska and Ruth Clemmer born in Washington.**

KAYS, DIANNA LEE

b. 5/16/1943 Washington, d. 9/26/1943, age 4m 10d, Child-Girl, lived at Newport, Lincoln County, Oregon, died at Newport, Oregon, no cause listed, no doctor listed, funeral 9/28/1943 (Tuesday) 10 AM at Grave site with Reverend Paul S. Kunzman of Vancouver, buried at Park Hill Cemetery (no marker). Ordered by and charged to father Chester Kays. **Parents were Chester Kays born in Battle Ground, [Clark County], Washington and Rachel Swartz born in Walla Walla, [Walla Walla County], Washington.**

PETTERSON, STEEN ANDREAS

b. 7/31/1858 Norway, d. 9/28/1943, age 88y 1m 27d, retired, married to I Gurine Petterson [1860-1944 has marker in Section E], Protestant, lived at 3714 "V" St., Vancouver, Clark County, Washington- had lived in the State for 23 years, died at home of uremia attended by Dr. John Harrison of Vancouver, funeral 10/2/1943 (Friday) 3 PM at Knapp Chapel with Reverend O.P. Stavaas of Vancouver, buried at Park Hill Cemetery Sec. E (has marker). Ordered by daughter. Charged to the State of Washington. **Parents were named Christopher [Petterson] and Anne both born in Norway.**

MUNCTON, CARROLL NELSON

b. 12/24/1877 California, d. 9/28/1943, age 65y 9m 4d, married to Gertie Muncton, farmer, Protestant, lived at Star Rt. Yacolt, Clark County, Washington (Dole Valley area) - had lived in the State for 13 years, died at home of chronic nephritis attended by Dr. W.D. Clark of Battle Ground, funeral 10/3/1943 (Saturday) 10:30 AM at Knapp Chapel with Reverend R.Rogers Frier of Vancouver, buried at

Park Hill Cemetery Section E. (has marker). Ordered by and charged to wife Gertie Muncton. **Parents were Henry [Munton] born in England and Jane Day born in Wales.**

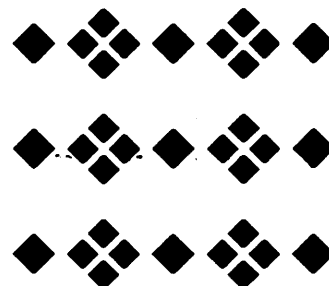
STANCK, FRANK EDWARD

b. 10/16/1886 Minnesota, d. 10/11/1943, age 56y 11m 25d, married to Dora T. [Ray] Stanck, carpenter for Kaiser Company, Catholic, lived at Rt #4 Box 138 Vancouver, Clark County, Washington - had lived in the state for 6 years, died at home of a cerebral hemorrhage attended by Dr. Ralph Lieser of Vancouver, funeral 10/18/1943 9:30 AM (Monday) at St. James Catholic Church with Reverend Father John Egan of Vancouver, buried at St. Mary of Guadalupe Cemetery r.12-L.25 (has marker). [Also buried are his daughter Deloris T. (1932-1937) and son Eugene T. (1923-1939)]. Charged to wife Dora Stanck. **Parents were Albert Stanck born in Czechoslovakia and mother name not known.**

McVICKER, LA WAYNE EDWARD

b. 10/13/1943 [Vancouver, Clark County], Washington, d. 10/13/1943, age 5 1/2 hours, Child-parents lived at 2007 "E" St., Vancouver, Clark County, Washington, born and died at St. Joseph's Hospital in Vancouver a premature baby attended by Dr. L.E. Hockett of Vancouver, funeral 10/15/1943 (Friday) 2:30 PM at grave site with Reverend Robert Williams of Vancouver, buried at Park Hill Cemetery Section B (has marker). [Also buried in Section B is Monty Wallace McVicker (4/12/1945-9/18/1945 has marker)]. **Parents were Dwayne [McVicker (2/26/1922-4/21/1946) born in Portland, Multnomah County, Oregon [U.S. Army Washington Tec. 5 WWII (has marker in Section E.)] and Velma Atterberry born in Oregon.**

(continues next issue)



VANCOUVER REGISTER

The "VANCOUVER REGISTER" has been abstracted by CCGS member Pat Bauer from a microfilmed copy in the Fort Vancouver Library. Copies of the "Register" are held by the Clark County Historical Society. Some issue have become lost. Items of local interest for genealogists and historians have been copied. The [] following articles indicate the [page # / column #]. * * * indicates article contains additional information not included in the abstract.

March 13, 1869 (Con't)

PERSONAL. - **MR. JOSEPH CUNNINGHAM** has returned to the city, intending to make his permanent residence here. He is hale and hearty. We give him a cordial welcome. His son, **PHILANDER CUNNINGHAM**, is mining in the mountains, back of Walla Walla. * * *

MR. L.W. HARRIS, of Union Ridge, has gone to the Goose Lake country. Some time since a tree fell on him, and laid him up for some time, but now he is convalescent.

MR. BEACH, of Olympia, gave us a call. He is a typ in the *Echo* office. * * *[3/2]

SECOND CONCERT. - The announcement is made that **MISS OCTAVIA MERCIER** will give her second vocal and instrumental concert at Oro Fine Hall, Portland, next Thursday evening.[3/2]

DIED

In this city, on Monday, March 8, 1869, of Laryngitis, **CHARLES WALL**, oldest son of **DR. DAVID** and **B. WALL** aged 4 years and 3 months.

In this city, on Monday, March 8, 1869, **JESSIE**, daughter of **M. and A.E. WINTLER**, aged 6 months 9 days, of dropsy of the brain.

In this city, on Tuesday, March 9, 1869, **MARY ANN**, the youngest child of **MRS. LAURA JOHNS**, aged 8 months.

In this city, on Thursday, March 11th, **JULIA**, daughter of **LOUIE C. and LUCY V. CARMAN**, aged 6 months and 11 days.[3/3]

APPLES. - We were agreeably surprised a few days since, to see our young friend, **MR. JOHN ALEXANDER**, entering our sanctum with a huge sack of apples on his shoulder.[3/3]

ESCORT. - The Vancouver Hibernian Benevolent Society will go to Portland to escort **S.J. McCORMICK** over, as guard of honor, on March 17. [3/3]

FORT STEVENS ITEMS. - The road from Fort Stevens to a point near Skipanon Landing has been completed by the united efforts of **J.F. SAUNDERS**, sutler of the post, and **MAJOR DARLING**, commanding the post.[3/3]

LECTURE. - We think **REV. MR. ELLIOT** might be induced to give us a lecture here on Railroads. Will not some one move in the matter? [3/3]

DEPARTURE. - **CAPT. TURNBULL** was conveyed by his steamer, the *Fannie Troupe*, down the river to get on board the *Oriflamme*. He goes to San Francisco to obtain new machinery for his steamer. He calculates to have her fitted up in splendid style upon his return.[3/3]

IMPROVEMENTS. - We notice on the opposite side of the street from the printing office some fine shade trees have been set out in front of **SHERIFF DURGIN'S** and **MR. MARSH'S** residences.[3/3]

MARCH 20, 1869

MR. T.R. BROOKS, Civil Engineer of the O.C.R.R., left this city on Thursday morning last, intending to inspect the grade of the entire line that he may know just what is to be done, when active operations are renewed. He did not start on a velocipede, nor with a carriage, but would travel with "shankhorses," and be at home where night overtakes him. - Oregon City Enterprise.[1/6]

MR. and MRS. COIT/CAIT, (*nee MISS LILLIE HITCHCOCK*), passed through Sacramento on Wednesday, en route to San Francisco, where it was said Mrs. C. would be

received by the Knickerbocker Engine Company. [1/6]

FOUND. - A certificate of citizenship, the property of **JAMES MURPHY**. It was found near the Catholic Church. The owner can have it by calling at this office. [2/3]

RUSH. - The rush for **S. ROBINSON & Co's Magic Soap** is unprecedented. **MR. ANDREW RIGGS, CRAWFORD & Co.**, and **SHONS** and **SCHEULE** have it for sale in Vancouver.[2/3]

PACIFIC HOUSE. - We call attention to **J.L. RANKIN's** new ad. Praise to this hotel is superfluous, its praise is through all the land.[2/3]

PICTURES. - **E. McQUILLEN** has many sacred pictures for sale. Both Catholics and Protestants will do well to visit his gallery on Front street, Portland, before purchasing elsewhere.[2/3]

MARRIED

At Astoria, March 1st, 1869, by **REV. D.B. GRAY, D.F. STAFFORD** AND **MISS HENRIETTE E. HOUGHTON**.

On the 5th of March, **JEREMIAH PRESTON** and **SOPHIA SPENCE**, both of Sauvies' Island.[2/3]

LOCAL ITEMS.

LECTURE. - **S.J. McCORMICK Esq.**, on the 17th inst., delivered at Metropolis Hall, for the benefit of the Catholic Aid Society, an able lecture. * * * [3/1]

"GREEN BUSHES." - At Oro Fino Theater, Portland, *Green Bushes*, or *The Huntress of the Mississippi*, was produced on Wednesday and Thursday evenings to crowded houses,. New talent has been added to the Bates Troupe, and among the new faces, we recognize two of San Francisco's favorites - **J.H. VINSON** and **N. BARRY**. * * * **MR. and MRS. BATES** deserve great credit for their unwearied exertions to please the theater-going public.[3/1]

DISINTERRED. - The remains of **MR. C.A. RHETT**, formerly a citizen of this place, were removed to the family vault for reburial. Those who looked upon the deceased said the features had undergone but little change. The complexion had a yellowish tint.[3/1]

FIRES. - The forest in proximity to Vancouver has been on fire lately. The pupils of the Seminary turned out to fight it on Monday. The fence round **MRS. HINES'** dwelling house being in a blaze. The building was saved by their timely exertions.[3/1]

CRAVATS. - **J. ISAACS & Co.** have some fine cravats for sale. They are of French manufacture and very tasty. There is a general rush to buy them, they are so cheap and very pretty.[3/1]

"GRETNA GREEN." - Married on Tuesday in this city by **REV. MR. SMITH**, of Monmouth, Polk Co., Oregon, **MR. WILLIAM MULKEY** to **MISS PORTIA E. BUTLER**, both of Polk county. The bride's father is said to be worth a cool hundred thousand dollars.[3/1]

STRONG'S BATTLEGROUND. - **MR. McIRVIN** informs us there are a number of new settlers coming in, and taking claims in that vicinity. There is scarcely a day passes, but strange faces are seen in Vancouver for the purpose of taking up land. [3/2]

Q.M.D. - The Q.M. Dept. of Vancouver is under the charge of **CAPT. CRAIG**. **MR. JENNINGS** and **MR. BOUTELLE** are his clerks. * * * [3/2]

TREES. - There are twelve hundred very fine fruit trees shipped from **HON. S.W. BROWN'S** Nursery to the Upper Country yesterday by the *Cascade*. [3/2]

CAUGHT. - **J.F. SMITH Esq** caught a soldier of the garrison robbing his hen roost. The Esq. considers this an *eggs-action* which he does not wish to submit to.[3/2]

DEFERRED. - **BEN HOLLADAY** has deferred his visit to Vancouver, on account of business engagements.[3/2]

RETURNED. - REV. H.K. HINES has returned from Washington, D.C., safe and sound.[3/2]

MARCH 27, 1869

(The following story has nothing to do with Clark County, WA, but might be of interest to our readers.)

A STRANGE STORY OF CAPTIVITY

The *Colorado Tribune* has the following strange story:

We saw at the Planters' House yesterday a woman named **LIZZIE BLACKBURN**, a native of Mount Jackson, S.C., who claims to have been a prisoner among different tribes of Indians about four years. She is now 28 years old, and is a cripple from the loss of both of her limbs, which have been amputated twice, the first time at the ankle, and again about three inches below the knee. Her story of her capture and imprisonment is about as follows, commencing with how she came to be in the Indian country: When she was five years old her father, **THOMAS BLACKBURN**, emigrated from South Carolina and joined the Mormons at Nauvo, Ill. He accompanied them to Florence, Neb., and finally emigrated to Utah, with the earliest emigrants, and preached among them. In 1863 or 1864, the father having become dissipated, and having for sometime been accustomed to living among the Mormon Indians, Lizzie and her mother, and two younger sisters, aged respectively ten and fourteen years, concluded to run away from him and the Mormons and, if possible, reach California. They took with them only what they could pack about their persons, and with a rifle and some ammunition started westward from Salt Lake,

wandered for nine months, when they were captured by the Digger Indians. Lizzie was sold by the Diggers to the Foxes. The mother and two remaining sisters, when they learned of Lizzie's sale, ran away from the Diggers and were pursued. When found they had starved and frozen to death, and were buried on Horse Creek. The Foxes sold Lizzie to the Snakes. Then she learned of the death of her mother and sisters, and saw them buried. She ran away from the Snakes, but was captured. She was badly frozen in the attempt, and was afterward again frozen. She says that two half breeds took her to Washington, D.C., where her limbs were amputated, and that she was afterwards returned to the Snakes by her father's direction, he being among them as a kind of chief at that time. She says that her father has spent most of his time among Indians for seven or eight years, and is one of them now. He is with the Arapahos or Cheyennes. The Snakes traded her to the Arapahos, from which she escaped about one year ago, by the assistance of **FRED JONES**, a Government scout, and was brought into Ellsworth.* * * (This story goes on to tell of Lizzie's adventures during her life with various Indian tribes and ends with the following:) She says she has an uncle living somewhere on the North Platte river and she is now on her way to him.[1/5]

LOCAL ITEMS

PERSONAL. - HON. COLUMBIA LANCASTER is in the city, on Wednesday.

COL. HODGES, U.S.A., came up on the *Oriflamme* to Portland on Sunday and arrived in this city on Thursday.

REV. MR. HINES left on Thursday for the Sound. During his tour, he will, in all probability, send items of interest to the *Register*.

MR. E.L. DOLE is in from the coal mine on the East Fork of Lewis River. He says the prospects are favorable as ever, and that carpers will find themselves mistaken. [3/1]

CONCERT. - **MISS OCTAVIA B. MERCIER** will sing in this city Thursday evening next. She will be ably supported by musicians of note. She has appeared twice before a Portland audience and passed triumphantly the ordeal of the severest criticism. Her brilliant genius has dissipated all prejudice against color and caste. [3/1]

RECOVERING. - We are glad to learn that **MR. STEPHEN DUMFRIES**, who was taken suddenly ill, about a week since, is rapidly regaining his usual health. Mr. D. has a large circle of friends, who have done all they could to make him comfortable, and who will be glad to learn of his speedy recovery. [3/1]

AUCTION. - The notice of the sale of **L.C. CARMAN's** household goods by **J. ISAACS & Co.**, is fixed at 10 o'clock a.m., March 27, 1869. All should be present, as there is a chance to obtain good bargains. We regret to lose **MR. CARMAN** from our midst. He has left, or intends to leave, for the upper country. [3/1]

VETERANS. - We know of three men, residents of Vancouver, **JAMES ORR, J.F. SMITH Esq.** and **P.H. FOX**, who were formerly soldiers serving in **GRANT's** company when he was a Captain. [3/1]

COURT. - The District Court will convene on the third Monday in April **CHIEF JUSTICE**

HEWITT, presiding. The Sheriff has all the grand and petit jurors for this county summoned. A large number of cases are already docketed.

The following jurors have been summoned for the coming term of the Court:

GRAND JURORS.

MOSES WEBB, JOHN TURNER, M.B. BOWMAN, R.T. LOCKWOOD, JAMES B. CHARLTON, N.B. SHUBERT and JOHN S. TOOLEY.

PETTIT JURORS.

ALLEN TURNER, JR., ADAM SICKLER, ORSON SEWARD, MASON GIBBONS, STEPHEN WRIGHT, WILLIAM CROSS, HUGH BYRNE, ZAC. WYATTE, WM. CAMPBELL, JARED VAN VLEET, CHARLES GODDARD, ALEX McANDREW and H.L. CAPLES. [3/1]

SOCIABLE. - The ladies of the Industrial Society of the M.E. Church, held a sociable at the residence of **T. SPERRY**, on Wednesday evening. It was a very pleasant time. [3/1]

CATHOLIC AID SOCIETY. - There was over \$100 currency realized by **S.J. McCORMICK's** lecture, at Metropolis Hall, on the night of the 17th day of March. [3/1]

ACCIDENT. - **NICHOLAS FITZGERALD** was thrown from his horse on last Saturday, receiving serious injuries. He is limping around the city. [3/1]

HO! FOR WHITE PINE. - **MR. G.W. MILLER** intends to go to White Pine first of April. **J.W. NICHOLS** has gone already.

MR. SAMUEL MARSH will soon leave for White Pine. He will go from Uniontown in the employ of **JOHN CREIGHTON**, who intends to run a freight team between Elko and White Pine.[3/2]

PHOTOGRAPHS. - Several friends of **H.C. MORSE** in this city received photographs of scenes in Argenti, Nev, and the Central Pacific R.R. They are very interesting in consequence of the excitement about White Pine.[3/2]

ACCIDENT. - We are sorry to learn that **MRS. JOHN MANEY** of this city has a very bad hand from the effect of running a needle in her wrist, while engaged about her household duties.[3/2]

SICK. - **CAPT. DAVIS**, on Lake River, lies in a very critical condition. He is an excellent man, and should receive the charity due to great private worth in distress by the visitation of Providence.[3/2]

NEW AD. - We would call attention to the Ad. of **AUG. A. SCHAE BEN**. He has a splendid Mill Site in close proximity to Vancouver. Those desiring to purchase such property should not lose so good an opportunity.[3/2]

EASTERN NEWS.

CONGRESSIONAL.

WASHINGTON, March 22. * * *

The Senate then elected **JOHN R. FRENCH** of North Carolina, Sergeant-at-arms; **JOHN M. MORRIS** of South Carolina, Executive Clerk

and **A.M. CLAPP** of Buffalo, N.Y., Congressional Printer.[3/2]

APRIL 3, 1869

TERRITORIAL ITEMS

A man named **DAVID HAINES**, an old resident of Cowlitz County, aged about sixty years, disappeared mysteriously from his home about four weeks ago, leaving no trace of his whereabouts. When last seen, he was at a store in Monticello, where he made a few purchases. On leaving the store, he stated that he would stop on the way home (in a boat) and catch a few smelt. Boat and man both are gone. There is considerable speculation as to his fate; some persons being of the opinion he has been foully dealt with.[2/3]

Thirty-five years ago **MRS. ERASTUS CORNING** deposited in an Albany savings bank the sum of \$22 to the credit of her nephew. Both forgot all about it till the other day, when the deposit had increased to \$223.[2/4]

LOCAL ITEMS.

PARDONS. - **GOVERNOR MOORE** has pardoned **HENRY SHEPARD** who was convicted last May of maliciously setting a pile of cord wood on fire near **COLLIN**'s wood yard above the Cascades. He had only about three weeks more to remain in prison, when his term of imprisonment would have been exited. We also understand that on the 24th ultimo **THOMAS WILSON**, convicted in October 1865, of highway robbery at the Vancouver Court, was pardoned out of the penitentiary at Steilacoom. He had about six months to serve.[3/1]



Ancestor Charts

Ancestor Chart of Diane Vere ROOT

32380 SE Compton Road, Boring, OR 97009

1. ROOT, Diane Vere; b 06 Jun 1947 Portland, OR; m James Fred BLAKE 27 Dec 1995 Gresham, OR.
2. ROOT, Donald Cromwell; b 17 Jan 1916 Portland, OR; m 29 Oct 1944 Portland, OR.
3. LOEB, Betty Lucile; b 16 Jan 1918 Portland, OR; m 29 Oct 1944 Portland, OR.
4. ROOT, George Gerald; b 28 Jul 1878 Racine, WI; d 22 May 1963 Portland, OR; m 01 Sep 1901 Gresham, OR.
5. CROMWELL, Leona (Adda); b 21 Jun 1879 Colfax, WA; d 12 Jan 1953 Portland, OR; m 01 Sep 1901 Gresham, OR.
6. LOEB, Alfred Adam; b 28 Sep 1879 Springfield, IL; d 09 May 1956 Portland, OR; m 09 Jun 1914 Wallace, WA.
7. SANDERS, Ethel Vere; b 06 Oct 1889 Cle Elum, WA; d 24 Apr 1978 Tigard, OR; m 09 Jun 1914 Wallace, WA.
8. ROOT, William Wallace; b 08 Nov 1848 Mottville near Syrac; d 30 Nov 1910 Portland, OR; m 07 Nov 1871 Decatur, MI.
9. PRINCE, Martha; b 22 Aug 1845 Birmingham, ENG; d 28 Feb 1923 Portland, OR; m 07 Nov 1871 Decatur, MI.
10. CROMWELL, John Thomas; b 30 Oct 1841 Chattanooga, TN; d 14 Dec 1912 Portland, OR; m 28 Dec 1870 Marion, OR.
11. PRICE, Sarah Ann; b 11 Oct 1844 Indianapolis, IN; d 15 Oct 1908 Portland, OR; m1 John Calvin ARNOLD 19 Jul 1860 Umpqua (Douglas) Cou; m2 John Thomas CROMWELL 28 Dec 1870 Marion, OR.
12. LOEB, Adam; b 21 Jul 1842 Hemsbach, Baden, GER; d 08 May 1916 Portland, OR; m 20 Oct 1868 Springfield, IL.
13. HANAUER, Caroline; b 31 Jul 1843 Lamprecht, GER; d 24 Apr 1909 Portland, OR; m 20 Oct 1868 Springfield, IL.
14. SANDERS, Clarence Lawrence; b abt 1862; m 01 Jun 1889 Cle Elum, Kittitas, WA.
15. ZEEK, Alpha Almira; b 22 Mar 1875 (Mill Plain) Vancouv; d 14 Sep 1951 Portland, OR; m1 Clarence Lawrence SANDERS 01 Jun 1889 Cle Elum, Kittitas, WA; m2 Thomas PETERSON 07 Oct 1898 Clark County, WA.
16. ROOT, Reuben; b abt 1824 NY; m Nov 1846 Sterling, NY.
17. MONROE, Caroline Elizabeth; b 14 Oct 1831 Oswego, Oswego, NY; d 04 Feb 1916 Portland, OR; m Nov 1846 Sterling, NY.
18. PRINCE, John; b 02 Feb 1812 London, ENG; d 29 Feb 1884 Portland, OR; m 29 Apr 1839 Aston Juxta, ENG.
19. DANN, Martha; b 27 Dec 1815 Birmingham, ENG; d 23 Dec 1891 Tacoma, Pierce, WA; m 29 Apr 1839 Aston Juxta, ENG.
20. CROMWELL, Andrew Forgison; b abt 1810 VA; d 19 Sep 1867 Pawnee, NE; m1 Sarah RAGON abt 1833; m2 Mary SCOFIELD 21 Nov 1844 Claiborne County, TN; m3 Delilah STILL 20 Sep 1860 Pawnee County, NE.
21. RAGON, Sarah; d See Notes GA; m abt 1833.
22. PRICE, Reuben; b 11 Sep 1813 Darlaston, ENG; d 22 Mar 1906 Medical Lake, WA; m 28 Jul 1834 Marion County, IN.
23. OWSLEY, Sarah; b 20 Feb 1815 IN; d 07 May 1886 Farmington, WA; m 28 Jul 1834 Marion County, IN.
24. LOEB, Wilhelm; b 18 Sep 1791 Hemsbach, Baden, GER; d 21 Sep 1852 Springfield, IL; m1 Margarethe WEISS 06 Jun 1818 Hemsbach, Baden, GER; m2 Anna Katharina JUNG 02 Feb 1840 Hemsbach, Baden, GER.
25. JUNG, Anna Katharina; b 03 Dec 1809 Hemsbach, Baden, GER; d 15 Nov 1865 Springfield, IL; m 02 Feb 1840 Hemsbach, Baden, GER.
30. ZEEK, William Frederick; b 21 Nov 1833 Porter Township, MI; d 02 Sep 1926 Chehalis, WA; m 25 Jul 1852 Motville, MI.
31. TILLOTSON, Emily Jane; b 16 Oct 1836 Southfield, MI; d 17 Mar 1909 Chehalis, WA; m 25 Jul 1852 Motville, MI.
34. MONROE, William; b MA.
35. POWELL, Lorinda; b VT.
36. PRINCE, John; b abt 1790 ENG; d ENG; m abt 1811 ?London, ENG.
37. —, Maria?; b abt 1795 ENG; d ENG; m abt 1811 ?London, ENG.
38. DANN, Francis; m abt 1813 probably Birmingham,.
39. HAYES?, Mary Ann; m abt 1813 probably Birmingham,.
40. CROMWELL, Charles B.; b abt 1755; m abt 1785 probably Halifax Cou.
41. —, Mary; m abt 1785 probably Halifax Cou.
42. RAGON, Jacob; b 1788 NC; d 1872 TN.
43. —, Lucinda; b abt 1800.
44. PRICE, Isaac; b 1786 ENG; m abt 1810 ENG.
45. —, Mary; b 1787 ENG; m abt 1810 ENG.
46. OWSLEY, Zachariah; b 18 Dec 1792 Lincoln County, KY; m 14 Feb 1814 Franklin County, IN.
47. NEAL, Elizabeth; b GA; d abt 1840 IN; m 14 Feb 1814 Franklin County, IN.
48. LOEB, Andreas; b 22 Jul 1764 Birkenau, Baden, GER; d GER; m 1788 Birkenau, Baden, GER.
49. SCHMIEDEL, Anna; b GER; d GER; m 1788 Birkenau, Baden, GER.
50. JUNG, Valentin Johann; b abt 1774 GER; d 08 Jul 1848 GER; m abt 1807 GER.
51. NISCHWITZ, Margarethe; d GER; m abt 1807 GER.
60. ZEEK, John; b 27 Dec 1810 Russell County, VA; d bef 1880 probably Clark Count; m1 Phebe BONINE 04 Jun

- 1829 Wayne County, IN; m2 Naomi Ellen — abt 1855 MI.
61. **BONINE**, Phebe; b about 1810 TN; d abt 1854 probably Williamsvil; m 04 Jun 1829 Wayne County, IN.
62. **TILLOTSON**, John; b 12 Dec 1804 CT.
63. **KNAPP**, Jane D.; b 20 Apr 1802 NY.
80. **CROMWELL**, William; b abt 1730 probably Virginia.
92. **OWSLEY**, IV, Thomas; b 13 Nov 1752 Fairfax County, VA; d 03 Nov 1825 Rockcastle County, KY.
93. **STAPP**, Dinah; b 01 Jun 1762 probably Kentucky; d aft 1830.
96. **LOEB**, Johannes; b 05 Jun 1734 Birkenau, Baden, GER; d 01 May 1794 Birkenau, Baden, GER; m 02 Feb 1761 Birkenau, Baden, GER.
97. **ERHARD**, Elisabeth Katharina; b 1744 GER; d 22 Mar 1794 Birkenau, Baden, GER; m 02 Feb 1761 Birkenau, Baden, GER.
98. **SCHMIEDEL**, —.
99. **HELLWICH**, —.
100. **JUNG**, —; b GER; d probably Hemsbach, GE; m 1708? probably Hemsbach, GE.
101. **WIND**, —; b probably Hemsbach, GE; d probably Hemsbach, GE; m 1708? probably Hemsbach, GE.
102. **NISCHWITZ**, Johann Daniel; b 22 Nov 1728 Hemsbach, Baden, GER; d 03 May 1800 Hemsbach, Baden, GER; m 1699? GER.
103. **GRABER**, —; b GER; d GER; m 1699? GER.
126. **KNAPP**, Jonah; d probably Perinton, NY.
184. **OWSLEY**, III, Thomas; b abt 1732 VA; d 01 Nov 1796 Madison County, KY; m 1746 VA.
185. **MIDDLETON**, Mary; b 1730 VA; d 16 Sep 1808 KY; m 1746 VA.
192. **LOEB**, Johann Jakob; b 1689 Birkenau, Baden, GER; d 22 Jan 1755 Birkenau, Baden, GER; m 19 Jan 1717 Birkenau, Baden, GER.
193. **FLOHR**, Anna Margarethe; b 1698; d 1773 Birkenau, Baden, GER; m 19 Jan 1717 Birkenau, Baden, GER.
194. **ERHARD**, Johannes.
196. **SCHMIEDEL**, Hans George; b 07 May 1709 Sulzbach, Baden, GER; m 23 Jan 1731 Hemsbach, Baden, GER.
197. **JUNG**, Apollonia; b 19 Mar 1711 Hemsbach, Baden, GER; d 05 Sep 1734 Hemsbach, Baden, GER; m 23 Jan 1731 Hemsbach, Baden, GER.
198. **HELLWICH**, Johann Georg; b 06 Jun 1683 Sulzbach, Baden, GER; d 25 Jan 1763 Sulzbach, Baden, GER; m 09 Jan 1709 Hemsbach, Baden, GER.
199. **BUERKE**, Anna Margaretha; b abt 1682; d 03 May 1745 Sulzbach, Baden, GER; m 09 Jan 1709 Hemsbach, Baden, GER.
200. **JUNG**, Johann Adam; b 06 Jan 1709 Hemsbach, Baden, GER; d 15 Aug 1758 Hemsbach, Baden, GER; m 14 Jan 1738 Hemsbach, Baden, GER.
201. **HELLWICH**, Anna Maria; b 22 Nov 1705 Hemsbach, Baden, GER; d GER; m 14 Jan 1738 Hemsbach, Baden, GER.
202. **WIND**, Jakob; b 23 Sep 1708 Hemsbach, Baden, GER; d bef 1766 Hemsbach, Baden, GER; m 14 Apr 1733 Hemsbach, Baden, GER.
203. **MUELLER**, Eva; b 1713 Bobstadt, GER; d 26 Apr 1766 Hemsbach, Baden, GER; m 14 Apr 1733 Hemsbach, Baden, GER.
204. **NISCHWITZ**, Johann Conrad; b 12 Dec 1700 Hemsbach, Baden, GER; d 30 Jan 1770 Hemsbach, Baden, GER; m 10 Jan 1724 Hemsbach, Baden, GER.
205. **KELLER**, Anna Maria; b 07 Sep 1701 Hemsbach, Baden, GER; d GER; m 10 Jan 1724 Hemsbach, Baden, GER.
206. **GRABER**, Jakob; b 1678 Mannheim, GER; d 16 Apr 1742 Hemsbach, Baden, GER; m 13 Nov 1714 Hemsbach, Baden, GER.
207. **GROH**, Anna Barbara; b 04 Nov 1691 Hemsbach, Baden, GER; m 13 Nov 1714 Hemsbach, Baden, GER.
368. **OWSLEY**, II, Thomas; b abt 1697 VA; d 1751 Fairfax County, VA; m 1730 VA.
369. **WEST**, Ann; m 1730 VA.
370. **MIDDLETON**, Thomas; b abt 1708 Piscataway Par., MD; d Apr 1767 Loudoun County, VA; m abt 1729 Prince George County.
371. **BAYNE**, Ann; b abt 1712 Piscataway Par., MD; d Apr 1767 Loudoun County, VA; m abt 1729 Prince George County.
384. **LOEW**, Andreas Johannes; m abt 1670 GER.
385. —, Margarethe; m abt 1670 GER.
386. **FLORI (FLOHR)**, Peter; b abt 1646 Birkenau, Baden, GER; d 1720 Birkenau, Baden, GER; m 20 Jun 1671 Birkenau, Baden, GER.
387. **STUTZ**, Anna; b ?Nieder-Mumbach, GER; m 20 Jun 1671 Birkenau, Baden, GER.
388. **NIKOLAUS/ERHARD (EHRHARDT)**, Hans; b 1666/1675 Voeckelsbach, GER.
392. **SCHMIEDEL**, Hans Jakob; b 13 Aug 1665 Sulzbach, Baden, GER; d 30 Aug 1724 Sulzbach, Baden, GER; m 16 Jan 1691 Hemsbach, Baden, GER.
393. **STEPHAN**, Anna Katharina; b 02 Mar 1676 Sulzbach, Baden, GER; d 30 Jul 1731 Sulzbach, Baden, GER; m 16 Jan 1691 Hemsbach, Baden, GER.
394. **JUNG**, Adam; b 26 Dec 1680 Laudonbach, Baden, GER; d 15 Feb 1758 Hemsbach, Baden, GER; m 30 Jun 1706 Hemsbach, Baden, GER.
395. **SCHUMANN**, Anna Barbara; b 25 Aug 1683 Hemsbach, Baden, GER; d 13 Jan 1713 Hemsbach, Baden, GER; m 30 Jun 1706 Hemsbach, Baden, GER.
396. **HELLWICH**, Johannes; b 1647; d 14 Jun 1691 Sulzbach, Baden, GER; m 17 Aug 1682 Hemsbach, Baden, GER.
397. **STEPHAN**, Anna Barbara; b abt 1660; m 17 Aug 1682 Hemsbach, Baden, GER.
398. **BUERKE**, —; d probably Mannheim, GE.
400. **JUNG**, Adam. (Common Ancestor - See Ancestor Number 394.)
401. **SCHUMANN**, Anna Barbara. (Common Ancestor - See Ancestor Number 395.)
402. **HELLWICH**, Franz; b 1664 Hilburts, GER; d 03 Sep 1747 Hemsbach, Baden, GER; m 16 Jan 1691 Hemsbach, Baden, GER.
403. **SCHAEFER**, Anna Margarethe; b 13 Aug 1672 Hemsbach, Baden, GER; d 03 May 1744 Hemsbach, Baden, GER; m 16 Jan 1691 Hemsbach, Baden, GER.
404. **WIND**, Valentin; b 18 Oct 1666 Hemsbach, Baden, GER; d 22 Sep 1723 Hemsbach, Baden, GER; m 18 Jan 1695 Hemsbach, Baden, GER.

405. HALBLAUB, Ursula; b 13 Aug 1670 Hemsbach, Baden, GER; d 08 Apr 1724 Hemsbach, Baden, GER; m 18 Jan 1695 Hemsbach, Baden, GER.
406. MUELLER, Conrad; b GER; d AFT1713? GER.
408. NISCHWITZ, Hans; b 10 Jan 1669 Hemsbach, Baden, GER; d 02 Aug 1733 Hemsbach, Baden, GER; m 02 Nov 1694 Hemsbach, Baden, GER.
409. EISENHAEUER, Anna Maria; b 05 Aug 1674 Laudenbach, Baden, GER; m 02 Nov 1694 Hemsbach, Baden, GER.
410. KELLER, Johann Daniel; b 1662 Impfingen, GER; d 14 May 1732 Hemsbach, Baden, GER; m 16 Nov 1700 Hemsbach, Baden, GER.
411. LEITWEIN, Anna Maria; b 02 Feb 1662 Hemsbach, Baden, GER; d 25 Jan 1747 Hemsbach, Baden, GER; m 16 Nov 1700 Hemsbach, Baden, GER.
412. GRABER, Hans; d probably Mannheim, GE.
414. GROHE, Philipp; b 1653 Hemsbach, Baden, GER; d 21 Sep 1721 Hemsbach, Baden, GER; m 09 Jan 1677 Hemsbach, Baden, GER.
415. HOFFMANN, Apollonia; b 11 Nov 1656 Hemsbach, Baden, GER; d 25 Mar 1705 Hemsbach, Baden, GER; m 09 Jan 1677 Hemsbach, Baden, GER.
736. OWSLEY, I, Thomas; b 11 Jun 1658 Stoke-Coursey, ENG; d 10 Oct 1700 Stafford County, VA; m1 Anne HARRIS; m2 Anne HARRIS.
737. HARRIS, Anne; b abt 1684 probably Stafford Co; d aft 1708 VA; m1 I, Thomas OWSLEY; m2 I, Thomas OWSLEY.
738. WEST "THE ELDER", John; b abt 1683; d aft 1714 Stafford County, VA; m abt 1702 probably Stafford Co.
739. HARRIS, Ann; d aft 1723 Stafford County, VA; m abt 1702 probably Stafford Co.
740. MIDDLETON, Thomas; b abt 1678 Charles County, MD; d abt 1745 Prince George County; m abt 1704 Prince George County.
741. HATTON, Penelope; b abt 1685 Charles County, MD; d Sep 1730 Prince George County; m abt 1704 Prince George County.
742. BAYNE, Walter; b 1679/1681 Charles County, MD; d Jun 1754 Prince George County; m abt 1705 Prince George County.
743. HAWKINS, Martha; b abt 1686 Charles County, MD; d Jun 1755 Prince George's Coun; m abt 1705 Prince George County.
772. FLORI, Hans; b 1610 probably Switzerland; d 11 Apr 1658 Birkenau, Baden, GER; m bef 1630.
773. —, Apollonia; d 14 Jul 1671 Birkenau, Baden, GER; m bef 1630.
776. EHRHARDT, Hans; b GER; d 05 May 1699 Birkenau, Baden, GER; m May 1658 probably Voeckelsbac.
777. JAKOB, Anna; b 17 Mar 1639 probably Rohrbach, GE; d 28 Apr 1671 probably Voeckelsbac; m May 1658 probably Voeckelsbac.
784. SCHMIEDEL, Philipp; b 1638 Hemsbach, Baden, GER; d 01 Aug 1704 Hemsbach, Baden, GER; m 09 May 1663 Hemsbach, Baden, GER.
785. WEBER, Anna; b 1643 GER; d 30 Apr 1721 Hemsbach, Baden, GER; m 09 May 1663 Hemsbach, Baden, GER.
786. STEPHAN, Hans; b 1636 Sulzbach, Baden, GER; d 01 Mar 1676 Sulzbach, Baden, GER; m 31 May 1662 Sulzbach, GER.
787. OBERT, Elisabeth; b 1649 Sulzbach, Baden, GER; d 07 Mar 1676 Sulzbach, Baden, GER; m 31 May 1662 Sulzbach, GER.
788. JUNG, Marcus; b 1653 Laudenbach, Baden, GER; d 12 Feb 1695 Laudenbach, Baden, GER; m 11 Aug 1676 Laudenbach, Baden, GER.
789. ZEISSLER, Apollonia; b 09 Dec 1655 Laudenbach, Baden, GER; m 11 Aug 1676 Laudenbach, Baden, GER.
790. SCHUMANN, Nikolaus; b 25 Sep 1653 Hemsbach, Baden, GER; d 12 Mar 1713 Hemsbach, Baden, GER; m 03 Feb 1678 Hemsbach, Baden, GER.
791. HOFFMAN, Anna Margarethe; b 28 Aug 1658 Hemsbach, Baden, GER; d 06 May 1703 Hemsbach, Baden, GER; m 03 Feb 1678 Hemsbach, Baden, GER.
792. HELLWICH, Johannes; d probably Impingen, GE.
794. STEPHAN, Hans. (Common Ancestor - See Ancestor Number 786.)
795. OBERT, Elisabeth. (Common Ancestor - See Ancestor Number 787.)
806. SCHAEFER, Peter; b 1643 Hemsbach, Baden, GER; d 24 Sep 1674 Hemsbach, Baden, GER; m 28 Jan 1681 Hemsbach, Baden, GER.
807. MANGOLD, Margarethe Anna Maria; d 12 Jan 1681 Hemsbach, Baden, GER; m 28 Jan 1681 Hemsbach, Baden, GER.
808. WIND, Hans Philipp; d GER; m bef 1665 GER.
809. —, Anna; d 09 Dec 1717 Hemsbach, Baden, GER; m bef 1665 GER.
810. HALBLAUB, Hans Philipp; b 1631 Hemsbach, Baden, GER; d 09 Sep 1691 Hemsbach, Baden, GER; m bef 1662 GER.
811. —, Anna Elisabeth; b 1641; d 24 Jan 1677 Hemsbach, Baden, GER; m bef 1662 GER.
816. NISCHWITZ, Velten; d 17 Mar 1697 Hemsbach, Baden, GER; m bef 1651 GER.
817. —, Anna Magdalena; b 1625; d 20 May 1685 Hemsbach, Baden, GER; m bef 1651 GER.
818. EISENHAEUER, Christoph; b 1642; d 22 Dec 1690 Laudenbach, Baden, GER; m 20 Jun 1671 Laudenbach, Baden, GER.
819. SOMMERLAD, Anna Margarethe; b 22 Nov 1648 Heppenheim, Baden, GER; d 20 Jun 1671 Laudenbach, Baden, GER; m 20 Jun 1671 Laudenbach, Baden, GER.
820. KELLER, Johann Daniel; b abt 1645 GER; d 24 Feb 1705 Impfingen, GER.
822. LEITWEIN, Georg; b 1641/1649 Hemsbach, Baden, GER; d 16 Jul 1717 Hemsbach, Baden, GER; m 29 Jan 1661 Hemsbach, Baden, GER.
823. SCHWERT, Catharina; d 30 Sep 1674 Hemsbach, Baden, GER; m 29 Jan 1661 Hemsbach, Baden, GER.
828. GROHE, Clauss (Nikolaus); b 1607; d 26 Feb 1658 Hemsbach, Baden, GER; m bef 1641 GER.
829. —, Otilie; b 1619; d 07 Feb 1689 Hemsbach, Baden, GER; m bef 1641 GER.
830. HOFFMAN, Adam; b 1612; d 20 Feb 1702 Hemsbach, Baden, GER; m bef 1636 GER.
831. —, Anna; d 11 Nov 1656 Hemsbach, Baden, GER; m bef 1636 GER.

1472. OWSLEY, John; b 12 Dec 1630 ENG; d 25 Dec 1687 Glooston, ENG; m1 Dorothea POYNTZ abt 1650 ENG; m2 Dorothea POYNTZ abt 1650 ENG.
1473. POYNTZ, Dorothea; b Benefield, ENG; d 02 Aug 1705 Glooston, ENG; m1 John OWSLEY abt 1650 ENG; m2 John OWSLEY abt 1650 ENG.
1474. HARRIS(ON), William; b 1633 ENG; d 16 May 1698 Stafford County, VA.
1476. WEST, John; b abt 1665; d 1716 Stafford County, VA; m Apr 1706 Stafford County, VA.
1477. SUSANNAH/PEARSON, Sarah; b 1644 probably Stafford Co; d abt 1715 Stafford County, VA; m Apr 1706 Stafford County, VA.
1480. MIDDLETON, Robert; b abt 1651; d 05 Apr 1708 Prince George County; m abt 1674 Charles County, MD.
1481. WHEELER, Mary (Marie); b abt 1659; d Aug 1708 Prince George County; m abt 1674 Charles County, MD.
1482. HATTON, William; b abt 1632 ENG; d Aug 1712 MD; m abt 1684 Charles County, MD.
1483. COPPING?, Mary; m abt 1684 Charles County, MD.
1484. BAYNE, John; b abt 1650; d Jul 1701 Liverpool, ENG; m abt 1680 Charles County, MD.
1485. WARREN, Mary?; m abt 1680 Charles County, MD.
1486. HAWKINS, John; m abt 1685.
1487. —, Elizabeth; m abt 1685.
1554. JAKOB, Hans; b probably Mumbach, GER; d probably Rohrbach, GE; m abt 1638 GER.
1555. —, Margarethe; b GER; d 19 May 1676 Rohrbach, Baden, GER; m abt 1638 GER.
1568. SCHMIEDEL, Heinrich; b 1605 GER; d 02 Feb 1673 Hemsbach, Baden, GER.
1570. WEBER, Hans; b 1614 GER; d 27 Aug 1673 Hemsbach, Baden, GER.
1572. STEPHAN, Peter; b 1596 GER; d 16 Aug 1676 Sulzbach, Baden, GER; m bef 1629 probably Sulzbach, GE.
1573. —, Eva; b 1594 GER; d 16 Aug 1674 Sulzbach, Baden, GER; m bef 1629 probably Sulzbach, GE.
1574. OBERT "THE ELDER", Hans; b 1601 GER; d 27 Oct 1694 Sulzbach, Baden, GER; m bef 1635 GER.
1575. —, Catharina; b 1616 GER; d 13 Aug 1689 Sulzbach, Baden, GER; m bef 1635 GER.
1576. JUNG, Nikolaus; d 24 Feb 1675 Laudenbach, Baden, GER; m bef 1650 GER.
1577. —, Otilie; d 04 Jun 1666 Laudenbach, Baden, GER; m bef 1650 GER.
1578. ZEISSLER, Jakob; d probably Laudenbach; m bef 1652 GER.
1579. —, Margarethe; d 22 May 1684 Laudenbach, Baden, GER; m bef 1652 GER.
1582. HOFFMAN, Adam. (Common Ancestor - See Ancestor Number 830.)
1583. —, Anna. (Common Ancestor - See Ancestor Number 831.)
1638. SOMMERLADT, Johann; m bef 1648.
1639. —, Margarethe; m bef 1648.
2944. OWSLEY, John; b abt 1591 ENG; d abt 1651 ENG; m ENG.
2945. EDWARDS, Edith; d 1663; m ENG.
2946. POYNTZ, Newdigate; b 08 Nov 1608 Reigate, Surrey, ENG; d 04 Aug 1643 Gainsborough, ENG; m abt 1627 ENG.
2947. FOXLEY, Sarah; b ENG; d ENG; m abt 1627 ENG.
5888. OWSLEY "THE YOUNGER", William; b abt 1560 ENG; d 1593 probably Axminster, E; m bef 1590 ENG.
5889. —, Mary; b ENG; d aft 1593 probably Axminster, E; m bef 1590 ENG.
5892. POYNTZ, John; b Reigate, ENG; d Oct 1617; m 27 Jul 1598 Reigate, Surrey, ENG.
5893. SYDENHAM, Anne; d aft 1624 ENG; m 27 Jul 1598 Reigate, Surrey, ENG.
5894. FOXLEY, Francis; b ENG; d 1617/1619 Harringworth, ENG; m ENG.
5895. DRYDEN, Mary; b ENG; d ENG; m ENG.
11776. OWSLIE, John; b ENG; d ENG; m abt 1555 ENG.
11777. —, Eme; b ENG; d 09 Sep 1592 probably Misterton, E; m abt 1555 ENG.
11784. POYNTZ, William; b probably Alderley, EN; d Apr 1601 Reigate, Surrey, ENG; m 23 May 1569 Reigate, Surrey, ENG.
11785. NEWDIGATE, Elizabeth; b ENG; d 1601/1602 probably Reigate, ENG; m 23 May 1569 Reigate, Surrey, ENG.
11786. SYDENHAM, John; b ENG; d 1591? probably Nympsfield; m aft 1551 ENG.
11787. POYNTZ, Mary; b ENG; d ENG; m aft 1551 ENG.
11788. FOXLEY, John; d 15 Mar 1562 probably Foxley, ENG; m ENG.
11789. JOCELYN, Margaret; d probably Foxley, ENG; m ENG.
11790. DRYDEN, John; b ENG; d 30 Sep 1584 probably Canons Ashb; m 1551 ENG.
11791. COPE, Elizabeth; b ENG; d ENG; m 1551 ENG.
23568. POYNTZ, John; b abt 1485; d 29 Nov 1544 FR; m ENG.
23569. SAUNDERS, Margaret; b ENG; d 1563/1564 probably Alderley, EN; m ENG.
23570. NEWDIGATE, Thomas; b ENG; m ENG.
23571. HAMPDEN, Katherine; b ENG; d ENG; m ENG.
23572. SYDENHAM, John; b 1494 ENG; d 16 Apr 1557 ENG; m ENG.
23573. BRIDGES, Ursula; b ENG; d Feb 1576 ENG; m ENG.
23574. POYNTZ, Nicholas; b abt 1535 ENG; d 01 Sep 1585 Iron Acton, ENG; m 12 May 1555 ENG.
23575. VERNEY, Anne; b ENG; d bef 1575 ENG; m 12 May 1555 ENG.
23576. FOXLEY, Thomas; d probably Foxley, ENG; m ENG.
23577. LOVETT, Margaret; m ENG.
23578. JOCELYN, John; b abt 1490 ENG; d 1553 ENG; m bef 1532 ENG.
23579. GRENVILLE, Anne; b ENG; d Nov 1554 ENG; m bef 1532 ENG.
23580. DRYDEN, David; b ENG; m ENG.
23581. NICHOLSON, Isabel; b ENG; d ENG; m ENG.
23582. COPE, John; b ENG; d 22 Jan 1558 ENG; m ENG.
23583. RALEIGH, Bridget; d ENG; m ENG.
47136. POYNTZ, Robert; b abt 1450 ENG; d 04 Nov 1520 ENG; m bef 1480 ENG.

47137. WOODVILLE, Margaret; b ENG; d Oct 1520 ENG; m bef 1480 ENG.
47138. SAUNDERS, Nicholas; b ENG; d 29 Aug 1553 ENG; m ENG.
47139. HUNGATE, Alice; b ENG; d ENG; m ENG.
47140. NEWDIGATE, Walter; b ENG; d ENG; m ENG.
47141. HAMPDEN, Isabella; b ENG; d ENG; m ENG.
47142. HAMPDEN, John; d 24 Dec 1553 ENG; m ENG.
47143. SAVAGE, Elizabeth; b ENG; d ENG; m ENG.
47144. SYDENHAM, John; b abt 1468; d Apr 1543 ENG; m ENG.
47145. AUDLEY, Elizabeth; b ENG; d Sep 1559 ENG; m ENG.
47146. BRUGGE (BRIDGES), Giles; b ENG; d 01 Dec 1511 ENG; m ENG.
47147. BAYNHAM, Isabel; b ENG; d Dec 1511 ENG; m ENG.
47148. POYNTZ, Nicholas; b abt 1510 ENG; d Nov 1556 ENG; m 24 Jun 1527 Yate, Gloucester, ENG.
47149. BERKELEY, Joan; b ENG; d See Notes; m 24 Jun 1527 Yate, Gloucester, ENG.
47150. VERNEY, Ralph; b 1510 ENG; d 06 Apr 1546 ENG; m 1528 ENG.
47151. BRAY, Elizabeth; b 1513 ENG; d 1573 ENG; m 1528 ENG.
47152. FOXLEY, John; d 09 Jan 1536 probably Foxley, ENG; m ENG.
47153. —, Elizabeth; d 04 Jul 1535 probably Foxley, ENG; m ENG.
47154. LOVETT, Thomas; b abt 1485 ENG; d 14 Dec 1543 probably Northampton; m ENG.
47155. BUTLER, Elizabeth; b ENG; d ENG; m ENG.
47156. JOCELYN, Ralph; b ENG; d 1504 ENG; m ENG.
47157. MARTIN, Catherine; b ENG; d ENG; m ENG.
47160. DRYDEN, William; d ENG.
47162. NICHOLSON, William; b ENG; d ENG.
47164. COPE, William; b 1450 ENG; d 07 Apr 1513 ENG; m bef 1496 ENG.
47165. SPENCER, Jane; b ENG; d 12 Feb 1525 ENG; m bef 1496 ENG.
47166. RALEIGH, Edward; b abt 1470 ENG; d 1508 ENG; m 1496/1505 ENG.
47167. CHAMBERLAYNE, Anne; b ENG; d aft 1508 ENG; m 1496/1505 ENG.
4. Van NUS, Hendrik "Henry"; b 05 Dec 1869 Amersfoort, NET; d 03 Feb 1954 Kalamazoo, MI; m NET.
5. DE JONG, Cornelia Wilhelmina; b 1866 Gorecum, Utrecht, NET; d 1937 Kalamazoo, MI; m NET.
6. DEKEMA, Freerk "Fred" Bouwes; b 25 Jan 1864 Metslawier, NET; d 23 Jun 1947 Kalamazoo, MI; m 14 May 1887 Friesland, NET.
7. BRAAKSMA, Aaltje Jans "Alice"; b 18 Feb 1866 NET; d 22 Aug 1947 Kalamazoo, MI; m 14 May 1887 Friesland, NET.
8. Van NUS, Hendrik; b 08 Dec 1844 Amersfoort, NET; d 03 Feb 1880 Amersfoort, NET; m 29 May 1867 NET.
9. OUDENDORP, Maria Petronella; b 04 Feb 1846 Baarn, Utrecht, NET; d 02 Mar 1927 Amersfoort, NET; m 29 May 1867 NET.
10. DEJONG, John; b NET.
11. BOARN, Bartje Doeland; b NET.
12. DEKEMA, Bouwe Freerks; b 10 Apr 1838 Ee, Friesland, NET; d 23 Apr 1886 Oostdongeradeel, NET; m 13 Jun 1863 Aalzum, Friesland, NET.
13. KLAVER, Lieuwke Klazes; b 23 Mar 1838 Aalzum, Friesland, NET; d bef 1877 NET; m 13 Jun 1863 Aalzum, Friesland, NET.
14. BRAAKSMA, Jan "John"; b NET.
15. KOOISTRA, Catherine; b NET.
16. Van NUS, Elbertus; b 10 Dec 1818 Amersfoort, NET; d 06 Aug 1886 Amersfoort, NET; m NET.
17. DEBREE, Evertje "Everarada"; b 07 Jul 1821 Amersfoort, NET; d NET; m NET.
24. DEKEMA, Freerk Bouwes; b 11 Mar 1809 Metslawier, NET; d 22 Dec 1857; m 16 Jun 1837 Ee, Friesland, NET.
25. VISSER, Jenke Pieters; b 1811 Ee, Friesland, NET; d 27 Mar 1860 Ee, Friesland, NET; m 16 Jun 1837 Ee, Friesland, NET.
26. KLAVER, Klaas Vissens; b NET.
27. BOUMA, Aaltje Reinders; b 23 Jul 1811 NET; d 02 Mar 1888.
32. Van NUS, Hendrik; b abt 1784 NET; d bef 1860 NET; m NET.
33. LA BLANS, Gerritje; b abt 1787 NET; m NET.
48. DEKEMA, Bouwe Freerks; b 28 Feb 1784 NET; d bef 1814 NET; m 26 May 1805 Anjum, Friesland, NET.
49. DEBOER, Houkie or Boukie Hayes; m 26 May 1805 Anjum, Friesland, NET.
50. VISSER, Pieter Wischer.
51. RENZER, Klaaske; d bef 1837.
96. FREERKS, Bouwe; b NET.
97. JOUKES, Aaltje; b NET.

Ancestor Chart of Frederick VanNUS

1521 NE 97th AV, Vancouver, WA 98664

1. Van NUS, Frederick; b 01 Jan 1928 Kalamazoo, MI; m Margaret Anne "Marge" MCLEOD 21 Oct 1950 Kalamazoo, MI.
2. Van NUS, Hendrik "Henry"; b 15 Feb 1893 Amsterdam, NET; d 09 Mar 1936 Kalamazoo, MI; m 14 Apr 1915 Kalamazoo, MI.
3. DEKEMA, Lieuwkje "Lucy"; b 28 Apr 1893 Wetzens, NET; d 09 Sep 1983 Kalamazoo, MI; m 14 Apr 1915 Kalamazoo, MI.

Ancestor Chart of Frank Douglas STICKNEY II

1608 SE 128th Court, Vancouver, WA 98684

1. STICKNEY, Frank Douglas, II; b 27 Oct 1954 Comanche, OK.
2. STICKNEY, Frank Douglas (Roy); b 15 May 1919 Detroit, MI; m 21 Jan 1954 Oklahoma City, OK; d 20 Jul 1990 Comanche, OK.

3. JOHNSON, Margaret Mac; b 14 May 1927 Blackwell, OK.
4. STICKNEY, Roy John; b Warren, OH; d 24 Oct 1966 Detroit, MI.
5. FRANK, Anna Helen; b 10 Jun 1891 GER; d 28 May 1958 Royal Oak, MI.
6. JOHNSON, Elmer; b 09 Feb 1905 Nashville, TN; d 12 Jun 1930 Oklahoma City, OK.
7. SHIPLEY, Veva; b 28 Oct 1907 Amber, Indian Territories; d 02 Feb 1975 Sarasota, FL.
8. STICKNEY, Walter D.; b 1886; d 1935.
9. HALL, Gertrude K.; b 1880.
10. FRANK, Albert; b 11 Apr 1864 Brumel, GER; m 29 Sep 1883 GER; d 24 Sep 1924.
11. WAGONER, Christine; b 10 Mar 1864; d 16 Mar 1960.
12. JOHNSON, Thomas Leonard; b 11 Jul 1872 Memphis, TN; m 21 Dec 1898; d 16 Oct 1931 Rush Springs, OK.
13. MOATS, Myrtle Tate; d 26 Aug 1946 Madill, OK.
14. SHIPLEY, Van Buren; b 13 Feb 1878 GA; m 01 Nov 1904 Chickasha, Indian Territories; d 24 Aug 1946.
15. BRYANT, Regina; b 16 Feb 1882 Little Rock, AR; d 11 Jan 1912 Pocasset, OK.
22. WAGNER, Daniel.
23. LANGKABLE, Marie.
24. JOHNSON, A. J.; b 14 Apr 1841; m 22 Oct 1865; d 24 Jul 1928.
25. HAZELWOOD, Rachel W.; b 28 Jul 1844; d 09 Oct 1914.
26. MOATS, Ed.
28. SHIPLEY, Seaborn Jones; b 13 Mar 1839 Rome, GA; m 23 Jun 1862 Rome, GA; d 14 Mar 1904 Livingston, GA.
29. BRYANT, Muhulda Clara; b Oct 1842 Spartanburg, Co., SC; d 10 Apr 1910 Pocasset, OK.
30. BRYANT, William Alfred; b 10 Dec 1856 Rome, GA; m 1880-1881; d 31 Aug 1942 Pocasset, OK.
31. ADAMS, Margaret; d 16 Mar 1886 Franklin Co., TN.
56. SHIPLEY, Will; b KY; d 1880.
57. CAMERON, Elizabeth; b GA; d 1860.
58. BRYANT, Muir Tolis; b 1805 SC.
59. LITTLEJOHN, _____.
60. BRYANT, James R.; b 1832 Spartanburg, Co., SC; m 20 Jan 1856 Floyd Co., GA; d 20 Apr 1863 Loudon, TN.
61. SHIPLEY, Lucinda Jane; b 03 Oct 1837 Rome, GA; d 24 Jun 1928 Pocasset, OK.
62. ADAMS, J.
63. SMITH, _____.
120. BRYANT, Muir Tolis (see 58 above).
121. LITTLEJOHN, _____ (see 59 above).
122. SHIPLEY, Will (see 56 above).
123. CAMERON, Elizabeth (see 57 above).
3. O'DONNELL, Anne Catherine; b 21 Jul 1889 Leavenworth, KS; d 10 Feb 1981 Vancouver, Clark, WA; m 03 Jul 1912 Vancouver, Clark, WA.
4. SNOOK, Wilson Roland; b 18 Oct 1857 Bushnell, IL; d 29 Sep 1939 Oregon City, OR; m 31 Mar 1884 Girard, Crawford, KS.
5. MODLIN, Frances Caroline; b 27 Mar 1861 Wabash, IN; d 08 Jul 1929 Oregon City, OR; m 31 Mar 1884 Girard, Crawford, KS.
6. O'DONNELL, James; b 08 Jan 1846 Mullaghduff, IRE; d 05 Feb 1918 San Francisco, CA; m1 George C. EAST abt 1874 Donegal, IRE; m2 Mary Elizabeth FARRELL 14 Jan 1885 Leavenworth, KS.
7. FARRELL, Mary Elizabeth; b 28 Mar 1862 Leavenworth, KS; d 07 Jan 1933 Vancouver, Clark, WA; m1 Nora B. HUFFMAN 30 Nov 1881 Platte City, MO; m2 James O'DONNELL 14 Jan 1885 Leavenworth, KS.
8. SNOOK, Solomon; b 01 Jan 1821 Beaver, Union, PA; d 21 Feb 1864 Walnut Grove, IL; m abt 1854 M'Donough, IL.
9. STEVENS, Hannah; b 09 Sep 1830 Mifflin, PA; d 10 Dec 1908 Hepler, Crawford, KS; m1 Solomon SNOOK abt 1854 M'Donough, IL; m2 Auriella Rose HUFFMAN 04 Apr 1867 M'Donough, IL.
10. MODLIN, Joseph; b 1835 GER; d 16 Jul 1898 Pittsburg, KS; m1 Louisa PETSHER 1860 Wabash, IN; m2 Eliza PITTSER 1886 Neosho, KS.
11. PETSHER, Louisa; b 1837 IN; d 25 Nov 1885 Neosho, KS; m 1860 Wabash, IN.
12. O'DONNELL, John; b IRE; m abt 1845 Donegal, IRE.
13. FERRY, Margaret; b IRE; m abt 1845 Donegal, IRE.
14. FARRELL, Thomas; b 1828 IRE; m abt 1854.
15. GREENE, Anne; b abt 1831 IRE; d 1900 Vancouver, Clark, WA; m abt 1854.
16. SNOOK, John; b 02 Jan 1770 Sussex, NJ; d 26 Aug 1864 Beaver Springs, PA; m1 Elizabeth SNOOK 31 Dec 1797 Stillwater, Sussex, NJ; m2 Catherine WILLS 24 Mar 1815 Beaver, Union, PA.
17. WILLS, Catherine; b 26 Nov 1788 Berks, PA; d 21 May 1863 Beaver Springs, PA; m 24 Mar 1815 Beaver, Union, PA.
18. STEVENS, Jonathan; b abt 1795 PA.
19. _____, Julia A; b abt 1800 PA.
32. SNOOK, Peter; b 04 May 1744 GER; d 13 Mar 1818 Beaver Springs, PA; m 14 Dec 1779 Hunterdon, NJ.
33. LAISH, Keturah; b GER; m 14 Dec 1779 Hunterdon, NJ.
64. O'DONNELL, John; b IRE; m abt 1845 Donegal, IRE.
65. FERRY, Margaret; b IRE; m abt 1845 Donegal, IRE.
66. O'DONNELL, John; b IRE; m abt 1845 Donegal, IRE.
67. FERRY, Margaret; b IRE; m abt 1845 Donegal, IRE.

Ancestor Chart of
Gordon Richard SNOOK
 6001 Highland Dr., Vancouver, WA-986

- 1 SNOOK, Gordon Richard.
2. SNOOK, Charles Lemual; b 26 Feb 1885 Walnut, Crawford, KS; d 21 Jul 1958 Vancouver, Clark, WA; m 03 Jul 1912 Vancouver, Clark, WA.



SURNAME FILE

by Delillah Knight

CCGS members have been requested to submit surname cards and ancestor charts. The surname cards are added to the surname index available to researchers visiting the CCGS library. Delillah Knight selected enough entries to fill four pages of the *Trail Breakers* for publication. Roy Katschke takes submitted ancestor charts and formats them for the Ancestor Charts section of our quarterly. Members are encouraged to update their information when appropriate. Publication of the information has led to shared information which has helped both our members and other researchers. The surname underlined indicates the submitter whose address will be found at the end of the section.

CARBRAY ? s Felix **CARBRAY**, b 22 Dec 1833 QUE, d 20 Dec 1907 QUE, dau Margaret **CARBRAY**, b IRE, d 30 Mar 1875, dau Kate Louise **CARBRAY**, d 31 May 1888, dau Cecilia **CARBRAY**, d 11 Jan 1881.
DENNY

CARD Judith Darleen **BUSHMAN**, b 19 Oct 1942 Kelso, Cowlitz, WA p Clive & Mary (**LANGEBERT**) **BUSHMAN**, m 3 April 1965 Kelso, Cowlitz, WA Stuart Lee **CARD**, b 25 June 1942, p LeRoy Sherman & Mary (**OSTOFF**) **CARD**. CARD

CAREY Sarah Elizabeth, b 13 April 1837 NY, m Thomas Perry **WILSON** 5 Feb 1856 Cape Vincent, Jefferson Co., NY, d 14 Nov 1890 Horton, Bremer Co., IA. FISHER

CARGILL David, b 1661 IRE, m Jenet, Co. Antrim, IRE, d 1734 Londonderry, Rockingham, NH. FISHER

CARGILL Janet, b IRE, m James **GREGG** Co. Antrim, IRE, d Londonderry, Rockingham, NH. FISHER

CARLILE Benjamin Robert, b 4 April 1870 King City, Gentry, MO, m 19 Jan 1891/2 Hattie May **BEST** (b 9 Dec 1875 Irving, Clay, KS, d 21 Aug 1949 Jonestown, Cloud, KS) Vining, Clay, KS, d 23 Oct 1949 Jonestown, Cloud, KS. GORDON

CARLILE Edna Nadine. See: **GORDON**, Charles Wesley. GORDON

CARLILE Sallie. See: **HURT**, Amberry. CRAVENS

CARLILE William Albert, b 25 April 1827 Dublin, IRE, m 6 Feb 1866/3, OK, Sarah Jane **POWELL** (b 19 Mar 1847 Dayton, Montgomery, OH, d 31 Oct 1923 Cheney, Sedgwick, KS) d 2 April 1902 Perkins, Payne, OK. GORDON

CARLOCK/CEARLOCK - KY ca 1820, IL 1830's. LANDERS

CARLSON Alfred John, b SWE, m IA Olivia **PILQUIST** (b SWE, d 1913) dau Freda m Lars **MARKEN**, children: Lorene, Ralph, Shirley; s Chester, m Glada **NUTTER**, children: Edith, Eileen; dau Ruth m Alfred **ERICKSON**, d Dec 1990 children: Wallace, Harold; s Alvin b 1904, s Clarence Carl b 19 Jan 1906, m Ruth Anna Marie **FALQUIST** children: Dorothy, Joanne, Richard; s Oliver (drowned); s Milton (died at young age of asthma); dau Olive (Ollie) b 22 Feb 1910, dau Ruth (died at birth). MELS

CARLSON Dorothy Jean. See: **EVANS**, Frederick Irwin, Sr. MELS

CARLSON Frederich, b 1848 NOR, m Christine __, d MI. RITENBURGH

CARLSON Mathilda, b 21 Apr 1854 SWE, liv Liared, SWE & Cleburne, KS, m Magnus **VILANDER** 25 Dec 1870, d 21 Dec 1935 Cleburne, KS VILANDER

CARMICHAEL Isaac Newton, b 16 Sep 1831 Arcola, IL, m Mary Ann **WOLF** (p James **WOLF** & Madaline **FORMAN**). ENSIGN

CARNES Sarah, m Benjamin **EBAUGH**, d Knoxville, TN. PORTER

CARNEY Robert, b 18__ IRE ?, m Bertha **IRWIN** 1889?, dau Ella, b 1890 NE, m Earl Lionel **MARBLE** 1911, d 1973 WA). TOWNSEND

CARPENTER - liv Rehoboth, MA & Coventry, CT - Benjamin (1663-1738), m Hannah **STRONG** at Coventry, CT; William (1632-1703) m Priscilla **BENNETT** 1651; William (1605-1659) m Abigail ? ca 1628. KUECHMANN

CARPENTER Elizabeth, b 28 Sep 1800 Johnstown, Fulton Co., NY, m 20 Feb 1823 Victor **WILSON**, Johnstown, Fulton Co., NY, d 1 May 1849 Cape Vincent, Jefferson Ct., NY. FISHER

CARPENTER - Coventry, CT - Eunice (1797-1849) m Obed **SWAIN**; Amos (1755-1832) m/2 Anna **MACY** 1796 Ghent, NY; Ebenezer (1709-1777) m Eunice **THOMPSON**, Hartford, VT; Benjamin (1663-1738) m Hannah **STRONG**, Rehoboth, MA. KUECHMANN

CARPENTER Mary. See: **KNAPP**, Job. FISHER

CARPENTER Nora May, b 22 May 1888 NE, f Wayne **CARPENTER**, m Ignatius **SAYLOR** (b 28 Jan 1873 Zanesville, OH, d 28 Mar 1949 Grand Rapids, MN), m 12 Jun 1903 Hill City, Aitkin, MN, s Glenn **SAYLOR** (b 19 Aug 1903 Hill City, Aitkin, MN), s Joseph Willard **SAYLOR** (b 22 Jul 1905 Hill City, Aitkin, MN, d Duluth, St. Louis, MN), s Floyd Waite **SAYLOR** (b 2 Jan 1907 Hill City, Aitkin, MN, d 29 Jul 1962 Oakland, Alameda, CA). dau Dorothy May **SAYLOR** (b 29 Jan 1909 Hill City, Aitkin, MN, d Grass Valley, CA), s Raymond Wayne **SAYLOR** (b 31 Jul 1911 Hill City, Aitkin, MN), s Roger Donovan **SAYLOR** (b 2 Nov 1913 Shovel Lake, MN), dau

Fay Irmintrude **SAYLOR** (b 23 Mar 1916 Shovel Lake, MN), s Clyde James **SAYLOR** (b 14 Aug 1917 Shovel Lake, MN), dau Ethel Ione **SAYLOR** (b 8 Oct 1918 Shovel Lake, MN. BECKER

CARPENTER Wayne, dau Nora May b 22 May 1888 NE, d 8 Nov 1952 Duluth, St. Louis, MN. BECKER

CARR - Ipswich, MA. HOLROYD

CARR Vialena, b 8 Feb 1885 Heppner, Morrow, OR, m/1 William Henry **GUYLL** "Hank" Pendleton, Umatilla, OR, 24 May 1902, m/2 Jesse **McLAUGHLIN**, Yakima, WA 26 Jan 1919, d 2 Sep 1965 Washougal, Clark, WA, bur Camas Cem, Camas, Clark, WA. GUYLL

CARROLL - 1810 - 1880 KY & Shelby Co., MO. WINSTON

CARROLL/CARRELL Dempsey, m Mary **HALL**; Joseph, b 1775 KY, m Jane **HAYDON/HAYDEN** 1806 KY; Susanna **HALL**, b 1816 KY, m Benjamin Summers **JOHNSON** 1837 KY, d 1893. BARNARD

CARROLL Frances Elizabeth, b 22 Jun 1841, m Edward C. **St. JOHN** (b 1825, d 24 Dec 1901 Graves Station, GA) 1 Nov 1860, s George W. **St. JOHN**, b 11 Sep 1861; dau Sarah Elizabeth **St. JOHN**, b abt 1863, d 21 Aug 1921; s John Henry **St. JOHN**, b 4 Jan 1865; s Baby **St. JOHN**, b 24 Aug 1867, d 24 Aug 1867; dau Willie E. Emoline **St. JOHN** b 14 Nov 1868; s Sampson Capers **St. JOHN**, b 10 Jun 1870 Graves, Terrell, GA, d 20 Feb 1952 Montgomery, AL; s Earle James **St. JOHN**, b 14 Jan 1874, d 17 Dec 1931 Memphis, Shelby, TN; s Wade Hampton **St. JOHN**, b 21 Sep 1877, d Americus, Webster, GA; s Albert De Lonzo **St. JOHN**, b 7 May 1881, d Lakeland, Polk, FL. ST. JOHN

CARTER - VA ca 1650, GA, KY, NC 1750's. LANDERS

CARTER Abraham, b 1833 IN, m Emily **WISEHART** (b 1832, prob IN, d OR) d 1879 prob OR. Liv IN, OR. WOODS

CARTER Frances. See: William J. **COEN**. Wife #3 of 4. HUESSER

CARTER John, or Hon. William, Eng; John of "Coratoman", VA; Robert "King" **CARTER** (1663-1732) dau Anne, dau Judith. OMAN

CARTER Rebecca, s John T. **DAVIS**, b 7 Nov 1787. DAVIS

CARTER Sarah Jane 1846-1927 IN, WA, OR, m ca 1879 Benjamin Franklin; George 1813 - , m ca 1837 Elizabeth **PAGET?**. GERKE

CARTIER Genevieve. See: **HOULE**, Michel. SAUL

CARTIER Joseph, b 22 Dec 1846, p Pierre & Mary Ann **CARTIER**, m Matilda **HOULE** (b 16 Jan 1847 Richelieu Prov, QUE, p Michel &

Genevieve (CARTIER) HOULE), d 29 Mar 1924. Children: Matilda, Emily, Joseph, Marie, b 13 Sep 1874, d 8 Nov 1935, John, Louis, Thomas, Michel Calix, b 16 May 1883 Centerville, Anoka Co., MN, m 1 June 1904 Laura Belle Van ELSBERG Centerville, Anoka Co., MN, d 4 Dec 1963 Eastside, Coos Co., OR; Philomene; George Frank. SAUL

CARTIER Michel Calix, b 16 May 1883 Centerville, Anoka Co., MN, p Joseph & Matilda (HOULE) CARTIER, m Laura Belle Van ELSBERG 1 June 1904 Centerville, Anoka Co., MN (b 4 Jan 1884 Circle Pines, Anoka Co., MN, d 30 May 1949 Eastside, Coos Co., OR, p Robert John & Frances Amelia (BOWERS) Van ELSBERG) d 4 Dec 1963 Eastside, Coos Co., OR. Children: Mable Emilie b 8 Aug 1905 d 23 Oct 1905; Robert Joseph b 13 Jan 1907, d 29 Mar 1907; Frances Mary, b 16 July 1908, d 7 Aug 1960; Roy Amie, b 27 Dec 1911, m 26 June 1945; Laurence L., b 26 Mar 1920, d 2 Mar 1921; Mitchell J., b 13 Dec 1921, d 14 Dec 1921; Ruth Ann Blanche, b 7 Feb 1926 Hugo, Washington Co. MN, m 21 Jan 1951 Eugene, Lane Co., OR Robert Anthony SAUL. SAUL

CARTIER Ruth Ann Blanche. See: SAUL, Robert Anthony. SAUL

CARVER Elisabeth, b Southern USA. SCOTT

CARVER Matilda. See: RUDDER, Sam. ONSLOW

CARY - 1630 VA. LANDERS

ADDRESSES OF SUBMITTERS

BARNARD Mary E. 5565 E. Evergreen Blvd. #3406, Vancouver, WA
 BECKER Diane 1115 NE 107th St., Vancouver, WA 98685-5355
 CRAVENS Maureen M. 3905 Oregon Drive, Vancouver, WA 98661-5836
 DAVIS John T. 18904 NE 35th Court, Ridgefield, WA 98642
 DENNEY William 314 NW 108th St., Vancouver, WA 98685
 CARD Judy Route 4, Box 582A, Woodland, WA 98674
 DOLLAR Betty Condit 3929 NW Jetty, #3, Lincoln City, OR 97367
 ENSIGN Julie 1926-A W 31st St., Vancouver, WA 98660
 FISHER Ruth 714 W 43rd St., Vancouver, WA 98660
 GORDON Bob & Maryalice P. O. Box 65411, Vancouver, WA 98665
 GERKE Roberta Brokaw 5328 NW Willamette #4, Portland, OR 97217
 GUYLL Robert & Barbara 511 146th Ave., NE, Bellevue, WA 98007
 HOLROYD Jean G. 1111 NW 49th St., Vancouver, WA 98663
 HUËSSER Mrs. Carol 10400 NE 72nd Ave., Sp. 26, Vancouver, WA
 KUECHMANN Gene 8113 NE 25th Ave., Vancouver, WA 98665
 LANDERS Jo 3110 Z St., Vancouver, WA 98661
 MELS Elaine 10911 NW 35th Ave., Vancouver, WA 98686
 OMAN Kitty R. 8701 NE Pierce Dr., Vancouver, WA 98662
 ONSLOW Candy 8215 E. Evergreen Hwy., Vancouver, WA 98664
 PORTER A. 612 NE Pinebrook Ave., Vancouver, WA 98684
 RITENBURGH Lucille 5907 Oklahoma Drive, Vancouver, WA 98661
 SAUL Susan M. 10102 NE 10th St., Vancouver, WA 98664
 SCOTT J'Anette Vidunas 18303 NW 41st Ave., Ridgefield, WA
 ST. JOHN Jerri 4809 NW 254th St., Vancouver, WA 98642-9334
 TOWNSEND Alice 1025 I St., Washougal, WA 98671
 VILANDER Dean R. 8520 NE 199th St., Battle Ground, WA 98604
 WINSTON Peggy 908 Grace St., Vancouver, WA 98661
 WOODS Evelyn Hayes Rt., Box 17A, Woodland, WA 98674

QUERIES

Queries are read by researchers in all regions of the United States and parts of Canada. The *Trail Breakers* is sent to research libraries and genealogical societies throughout the country. Queries are free to all genealogists. Send your query to *Queries Editor, Clark County Genealogical Society, P.O. Box 2728, Vancouver, WA 98668.*

ROBERTS
JONES
DOWNEY
KELSEY
JORDAN
BLOOM

Seeking information/descendants of Sarah ROBERTS JONES, b 3 Dec 1832 in South Wales and d 1912 in Spencer, Iowa. She m Hugh JONES in 1851 in Pennsylvania. Children b to this union included Mary Agnes (Ann DOWNEY), Samuel, Margaret (KELSEY), Lucy (KELSEY), Philip, Lewis, Lizzie (JORDAN), Thomas, Ellen (BLOOM).
Lowell Gene and Judy Ann (DOWNING) WITTKE, (503) 657-7641, 16281 S. Oak Tree Terrace, Oregon City, Oregon 97045.

NELLY
SWEENEY
DOWNEY
CAREY
ENGLISH

Seeking descendants of John and Ellen (NELLY SWEENEY) DOWNEY, natives of Tipperary Co. Ireland. They emigrated to US about 1849(?) and settled in PA, IA, and NE. Children: Ellen b 1835, m. John CAREY and lived in PA; Mary b 1837, d in 1919, m. William ENGLISH and lived in Wilmington, DE; John b 1840; James b 1841; Bridget b 1842; Margaret b 1844, Patrick b 1846; Thomas b 1847; Margaret b. 1850; Johanna b 1851; and John b. 1855.
Lowell Gene and Judy Ann (DOWNING) WITTKE, (503) 657-7641, 16281 S. Oak Tree Terrace, Oregon City, Oregon 97045.

PLASSE
PLAUSAE
LaFLEUR

Seeking information on Marie Emma PLASSE/PLAUSAE, b. 18875, MA?, d. 1958, m. Esdras LaFLEUR in MA, lived in Southbridge, Manitoba by 1916, and Alberta, Canada by 1928.
Pauline Vaugeois, 17 Madonna Drive, St. Albert, Alberta, Canada T8N 1G9

BRAY
COTE

Need any info on Fabiola BRAY who was m to Eli/Elie COTE. She d ca 1897 in MN at the age of 20 yrs. Elie COTE was originally from St. George Parish, Kankakee Co., IL. He had 2 daughters: Phoebe and Philomene (b. c. 1892, Red Lake Falls or Crookstown, MN) and 2 sons: Raymond (b. c 1895) and Rene. Elie moved to Saskatchewan and homesteaded at Lampton. It is thought that he d in Puyallup, WA in 1930s.

Pauline Vaugeois, 17 Madonna Drive, St. Albert, Alberta, Canada T8N 1G9

PENK
THEEDE

Need info on grandmother Henriette Wilhelmine Margarete PENK, b 1859/60 in Holstein, GER, m Claus Jacob THEEDE 1 June 1879 Grant Park, IL, lived Fremont, NE from 1880 until death 18 March 1892. Children: Louis, Heinrich, William Frederick (father), Henrietta Wilhelmine (Minnie).
Delillah T. Knight, 3205 E. McLoughlin Blvd., Vancouver, WA 98661.

ABOUT PRINT AND PRINTOUTS

By Gene Kuechmann¹

I spent a number of years as a teacher, and many more as a textbook editor. I was always amazed by the uncritical faith people place in the printed word. (If your result does not agree with the answer in the back of the book, you must have made an error. The book can't possibly be wrong!) Many people seem to think it is impossible to set errors in type. Unfortunately, it is really quite easy.

This uncritical faith in the printed word is a major stumbling block for amateur genealogists. Too many seem to think that statements in a published genealogy, well documented or not, are worthy of repeating without further checking or qualification. And, of course, the more times a statement is repeated, the more inclined the uncritical are to give it credence, though it may hark back to a single mistaken source.

The problem of uncritical acceptance is even greater with computer-stored material. I have observed people searching the Ancestral File² and Exclaiming with delight that they have just found their descent from French royalty, while others beam with joy at their relationships with presidents and famous authors. Alas, how easily convinced some people are, and how confident that no one would enter information into a computer unless it were true. And yet with a few minutes' effort one can find in the same computer any number of claims that reputable genealogists have long since proven unfounded, and countless more claims that may be valid working hypotheses but lack the evidence to establish them as facts.

There is nothing inherently wrong with being a compiler rather than a researcher; most of us combine the two. There is also nothing inherently wrong with the wise use of printed sources and computerized information. But the careful genealogist knows that many publishers print what they're paid to print without regard to its truth or accuracy (witness the tabloids), and computers store and return what is put into them with similar disregard. In computer jargon, this phenomenon is known as GIGO -- garbage in, garbage out.

All genealogy is based on suppositions, not the least of which are the suppositions that the mother gave birth to the baby she took home (the Mays-Twigg case in Florida was not unique) and that the biological parents are those named in the birth records. Let us not compound our problems by also supposing that all that appears in print or printout is true.

¹ CCGS member Gene Kuechmann helps lead our computer interest group and teaches in the CCGS sponsored genealogy classes offered through Clark.

² Editors note: The Ancestral File is a RESEARCH AID provided by the LDS church. They are very quick to point out that it is *an aid to help you do your own research*. Gene is absolutely correct about some who assume information is correct. Don't be one of them. I know a cousin of mine who submitted an incorrect name for a great-grandmother we share because our family history had it wrong! A marriage record corrected this error. And I have been glad to get "where to look next" because the Ancestral File provided excellent information. P.S. Spell check picked up 20 typo errors I made reprinting Gene's fine letter. I know that GIGO she talks about! And I don't always catch all my errors even with several proofreadings.

NARA GIFT FUND

Established in 1983 as the Genealogical Coordinating Committee NARA Gift Fund, it is now officially known as the Malcolm H. Stern NARA Gift Fund. This fund is a nationally supported program to finance the creation of finding aids and the microfilming of valuable research materials now preserved in NARA (National Archives and Records Administration) in Washington, D.C. NARA houses nearly 1.5 million cubic feet of records documenting our past. Only a tiny fraction of these records have been preserved on microform, allowing researchers better access and preserving the original records from deterioration. These microform copies, produced without government funding, are then distributed to the 13 National Archives Regional Archives (Seattle is our closest) for use by researchers. These records are also available through any LDS (Mormon) Family History Center in the world.

The Federation of Genealogical Societies administer the Malcolm H. Stern NARA Gift Fund. Rabbi Malcolm H. Stern (1915-1994) was the founder and first president of the Genealogical Coordinating Committee, and the creator of the Gift Fund. His contributions to genealogy over a 44 year period are monumental. He wrote many articles for genealogical and historical publications. He was best known for *Americans of Jewish Descent: 600 Genealogies (1654-1883)*, which documents the genealogies of Jewish families that arrived during the American colonial and federal periods. He was the 1988 recipient of the Federation of Genealogical Societies (FGS) George Williams Award for outstanding contributions to the FGS and to the genealogical community.

Through the generous donations of Genealogical Societies and individual genealogists nationwide since 1983, the following records have been preserved:

Microfiche of Street Indexes to the 39 larger cities for the 1910 census

Galveston Passenger Arrival records, 1896-1948

Canadian Border Crossings (1895-1954) Indexes

1920 Census Enumeration Districts

Index and War of 1812 Prisoner of War records

Civil War Soldiers System; in coordination with The National Park Service, The Civil War Trust, The Genealogical Society of Utah and The National Archives. The system will include a computerized database containing 5.5 million names of soldiers, whether the soldier was Confederate or Union, the soldier's regiment and rank. The system will also identify 7,000 regiments. This system will identify the sources for all information in the Database. (The Federation is responsible for all the data

entry.) This has been a project of the Federation that has taken approximately 3 yrs.

Records of the Quartermaster General: Burial Registers for Posts, Camps and Stations, 1828-1929. 2-Vols.

Records of the Quartermaster General: Card records of Headstone Contracts and U.S. Soldiers' Burials, 1861-1903 - 112 boxes

Records of the Department of State: Letters Received Regarding Impressed Seaman. 1794-1915. 11 boxes

Records of Department of State: Registers of Applications for the Return of Impressed Seaman. 4-vols.

The FGS-NARA filming committee continues to take suggestions for items to be microfilmed. Ideas are solicited from anyone is interested in genealogy.

The Clark County Genealogical Society supports these efforts and has made it easy for our members to contribute by checking the square for a donation to NARA (be sure to add it to your membership amount if you are writing one check).

INDEX

- A -

ABBOTT, 9
ADAMS, 33
ALEXANDER, 22
ALLEN, 17
AMES, 6
AMOTT, 9
ARMSTRONG, 19
ARNOLD, 28
ASPLAND, 19
ATTERBERRY, 21
AUDLEY, 32
AYERS, 20

- B -

BACON, 16
BAILEY, 14
BANKHEAD, 11
BARNARD, 36, 37
BARRY, 24
BATES, 19, 24
BAUER, 22
BAUGHMAN, 10
BAUM, 11
BAYNE, 29, 30, 31
BAYNHAM, 32
BEACH, 22
BECKE, 36
BECKER, 16, 18, 37
BENNETT, 18, 19, 35
BERKELEY, 32
BEST, 34
BIGHAM, 11
BLACKBURN, 25
BLAKE, 28
BLOOM, 38
BOARN, 32
BOATNER, 7
BOERSMAN, 21
BONINE, 28, 29
BORTNIAK, 14
BOUMA, 32
BOURSMA, 17
BOUTELLE, 24
BOWERS, 37
BOWMAN, 26
BOYD, 10
BRAAKSMA, 32
BRAY, 32, 38
BRIDGES, 31, 32
BROOKS, 23
BROWN, 10, 24
BRUGGE, 32

BRYANT, 33
BUERKE, 29
BUREK, 14
BURGESS, 9, 16
BUSHMAN, 34
BUTLER, 24, 32
BYRNE, 26

- C -

CADE, 15
CAINEY, 18
CAIT, 23
CALKINS, 15
CAMERON, 33
CAMPBELL, 26
CAPLES, 26
CARBRAY, 34
CARD, 34, 37
CAREY, 34, 38
CARGILE, 34
CARGILL, 34
CARLOCK, 34
CARLSON, 35
CARMAN, 22, 26
CARMICHAEL, 35
CARNAY, 18
CARNES, 35
CARNEY, 35
CAROLL, 17
CARPENTER, 35, 36
CARR, 36
CARRELL, 36
CARROLL, 36
CARTER, 36
CARTER, 9
CARTIER, 36, 37
CARVER, 37
CARY, 37
CASSELL, 11
CEARLOCK, 34
CHAMBERLAYNE, 32
CHARLTON, 26
CLAPP, 27
CLARK, 11, 21
CLEAVER, 19
CLEMMER, 21
COAT, 23
COEN, 36
COFFIELD, 18
COLE, 18
CONDIT, 12
COOK, 10
COPE, 31, 32

COPPING, 31
CORNING, 27
CORRELL, 10
COTE, 38
CRABB, 9
CRAIG, 24
CRAVENS, 37
CRAWFORD, 23
CREIGHTON, 27
CRESAP, 20
CROMWELL, 28, 29
CRONK, 17
CROSS, 26
CUNNIGHAM, 22
CURTEIS, 15
CURTIS, 10

- D -

DANE, 18
DANN, 28
DARLING, 22
DART, 10
DAVIS, 10
DAVIS, 27
DAVIS, 36, 37
DAWSON, 14
DAY, 21
De JONG, 32
DEBOER, 32
DEBREE, 32
DEJONG, 32
DEKEMA, 32
DENNY, 34, 37
DOANE, 8
DOLE, 26
DOLLAR, 37
DOWNEY, 38
DOWNING, 38
DRAKE, 10
DREED, 10
DRYDEN, 31, 32
DUMFRIES, 26
DURGIN, 23

- E -

EAGER, 17
EAST, 33
EASTRIDGE, 8
EBAUGH, 35
EDWARDS, 31
EGAN, 21
EGVERT, 17
EHRHARDT, 29, 30

EISENHAUER, 30
EKSTROM, 11
ELDER, 31
ELLIOT, 23
ENGLISH, 38
ENSIGN, 35, 37
ERHARD, 29
ERICKSON, 11, 35
EVANS, 35
EVEN, 19

- F -

FALQUIST, 35
FARRELL, 33
FERRY, 33
FIKE, 19
FINLAYSON, 171
FINLEY, 17, 18,
FISHER, 34, 35, 37
FITZGERALD, 26
FLOHR, 29
FLORI, 29, 30
FORMAN, 35
FOSTER, 6, 11
FOX, 26
FOXLEY, 31, 32
FRANK, 33
FREERKS, 32
FRENCH, 27
FURR, 8

- G -

GAGEN, 10
GERKE, 36, 37
GERMANN, 5
GIBBARD, 14
GIBBONS, 26
GIBSON, 10
GILLMORE, 5
GILMAN, 5, 16
GIVEN, 15
GIVENS, 16
GODDARD, 26
GOODWIN, 16
GORDON, 34, 37
GRABER, 29, 30
GRANT, 26
GRAY, 23
GREEN, 10
GREENE, 33
GRENVILLE, 31
GRIFFIN, 9
GRIMES, 17

GROAT, 20
GROH, 29
GROHE, 30
GROVE, 8
GUILMARTIN, 7
GUYLL, 36, 37

- H -

HAINES, 27
HALBLAUB, 30
HALL, 14, 20, 33, 36
HAMMER, 17
HAMPDEN, 31, 32
HANAUER, 28
HANEY, 14
HARLEN, 11
HARMS, 7
HARRIS, 8, 22, 30, 31
HARRISON, 21
HARTMAN, 7
HATTON, 30, 31
HAWKINS, 30, 31
HAYDEN, 36
HAYDON, 36
HAYES, 28
HAYNES, 19
HAZELWOOD, 33
HELLWICH, 29, 30
HELMBERG, 20
HENDRICKS, 11
HENRY, 9
HEWITT, 26
HINES, 14, 24, 25
HITCHCOCK, 23
HOCKETT, 21
HODGES, 25
HOFFMAN, 30, 31
HOFFMANN, 30
HOLLADAY, 24
HOLROYD, 36, 37
HOPKINS, 6
HORSTMAN, 9
HOUGHTON, 23
HOULE, 36, 37
HOWARD, 19
HUCKLEBERRY, 20
HUESSER, 36, 37
HUFFMAN, 33
HUNGATE, 32
HUNTER, 5, 16
HUSTON, 15
HUTT, 19, 20

- I -

IRVING, 10
IRWIN, 35

ISAACS, 24, 26

- J -

JAKOB, 30, 31
JAMES, 16, 17
JEFFERIES, 9
JENNINGS, 24
JOCELYN, 31, 32
JOHNS, 22
JOHNSON, 11, 18, 33
JONES, 38
JORDAN, 38
JORDON, 7
JOUKES, 32
JUNG, 28, 29, 30, 31

- K -

KASASI, 16
KAYS, 21
KELLER, 29, 30
KELSEY, 38
KERR, 20
KLAVER, 32
KNAPP, 20, 29, 35
KNIFONG, 17
KNIGHT, 34
KOOISTRA, 32
KRAMER, 20
KUECHMANN, 35, 37, 39
KUNZMAN, 21
KURSE, 9

- L -

LA BLANS, 32
LaFLEUR, 38
LAISH, 33
LaLONDE, 14
LANCASTER, 25
LANDERS, 34, 36, 37
LANGEBERT, 34
LANGKABLE, 33
LANT, 11
LAWTON, 5
LEITWEIN, 30
LESLIE, 8
LIESER, 17, 21
LINGE, 20
LITTLEJOHN, 33
LOCKWOOD, 26
LOEB, 28, 29
LOEW, 29
LOREN, 14
LOSS, 18
LOVETT, 31, 32
LUDEMAN, 17

- M -

MANEY, 27
MANGOLD, 30
MARBLE, 35
MARKEN, 35
MARPLE, 8
MARSH, 23, 27
MARTIN, 19, 32
McANDREW, 26
McBETH, 10
McCARTIN, 18
McCAWLEY, 8
McCORMICK, 22, 24
McFARLAND, 12
McIRVIN, 24
McKENZIE, 13
McKIBBEN, 9
McLAUGHLIN, 36
MCLEOD, 32
McMULLEN, 7
McQUILLEN, 23
McVICKER, 21
MEAGHER, 19
MELS, 35, 37
MERCIER, 22, 26
MIDDLETON, 29, 30, 31
MIKKELSON, 8
MILLER, 17, 18, 26
MINOR, 19, 20
MOATS, 33
MODLIN, 33
MONROE, 28
MOODY, 18
MOOK, 18
MOORE, 8
MORRIS, 27
MORSE, 27
MOULTON, 6
MUELLER, 29, 30
MULKEY, 24
MUNCTON, 21
MURKIE, 16
MURPHREE, 16
MURPHY, 23
MYERS, 8

- N -

NEAL, 28
NEELEY, 10
NEHER, 9
NELLY, 38
NEWDIGATE, 31, 32
NEWTON, 16
NICHOLS, 26
NICHOLSON, 31, 32
NICKELSEN, 18

NIKOLAUS, 29
NISCHWITZ, 28, 29, 30
NOBLITT, 9
NUTTER, 35

- O -

O'CONNOR, 10
O'HARA, 10
O'TOOLE, 11
O'DONNELL, 33
OBERT, 30, 31
OGELTHORPE, 6
OKEL, 14
OLMSTEAD, 3, 4, 7
OMAN, 36, 37
ONSLow, 37
ORR, 26
OSTOFF, 34
OTT, 20
OUDENDORP, 32
OWSLEY, 28, 29, 30, 31
OWSLIE, 31

- P -

PAGE, 15
PAGET, 36
PALMQUIST, 20
PARRISH, 11
PATTERSON, 18
PATTON, 17
PEABODY, 21
PEARSON, 31
PENK, 38
PETERMAN, 8
PETERSON, 28
PETSHER, 33
PETTERSON, 21
PILQUIST, 35
PITTSER, 33
PLASSE, 38
PLAUSAE, 38
PORTER, 37
POWELL, 28, 34
POYNTZ, 31, 32
PRESTON, 23
PRICE, 28
PRINCE, 28

- Q -

QUIRK, 9

- R -

RAGON, 28
RALEIGH, 31, 32
RANKIN, 23
RATCLIFF, 9

RAYMOND, 18
RENSHAW, 10
RENZER, 32
RHETT, 24
RICHARDS, 18
RICHARDSON, 19
RIGGS, 23
RILEY, 9
RIPPY, 10
RITENBURGH, 35, 37
ROBERTS, 38
ROBINSON, 23
ROBISON, 9
ROGERS, 9, 19, 21
ROOT, 28
RUSH, 17
RUTHERFORD, 10

- S -

SAKRISON, 16, 17
SALISBURY, 18
SALMI, 16
SANDERS, 28
SAUL, 36, 37
SAUNDERS, 22, 31, 32
SAVAGE, 32
SAYLOR, 35, 36
SCHAE BEN, 27
SCHAEFER, 29, 30
SCHEULE, 23
SCHMIEDEL, 28, 29, 30,
31
SCHRADER-
MUGGENTHALER, 14
SCHULTZ, 9
SCHUMANN, 29, 30
SCHWEITZER, 14, 15
SCHWERT, 30
SCOFIELD, 28
SCOTT, 10, 37
SERVICE, 10

SEWARD, 26
SHARP, 9
SHAW, 6
SHEA, 9
SHEPARD, 27
SHILLING, 10
SHIPLEY, 33
SHIVELY, 15
SHONS, 23
SHUBERT, 26
SICKLER, 26
SIMMERMAN, 10
SINGER, 6
SKINNER, 18
SKOVE, 11
SKVARENINA, 9
SMITH, 8, 9, 20, 24, 26,
33
SNOOK, 33
SOMMERLAD, 30
SOMMERLADT, 31
SPARKS, 16
SPENCE, 23
SPENCER, 32
SPERRY, 26
SPURGEON, 16
St. JOHN, 36, 37
STAFFORD, 23
STAHL, 8
STANCK, 21
STAPP, 29
STEPHAN, 29, 30, 31
STERN, 40
STEVENS, 9, 33
STEWART, 19
STICKNEY, 32, 33
STILL, 28
STOUT, 14
STQVAAS, 21
STRONG, 35
STUTZ, 29

SUHL, 19
SUMONELO, 16
SUSANNAH, 31
SWAIN, 35
SWARTZ, 21
SWEENEY, 38
SYDENHAM, 31, 32

- T -

TALBERT, 5, 6, 7
TAYLOR, 18
THEEDE, 38
THOMPSON, 10, 35
TILLOTSON, 28, 29
TOLZMANN, 15
TOOLEY, 26
TOWLE, 14
TOWNSEND, 35, 37
TURK, 19
TURNBULL, 23
TURNER, 26

- U -

UPDIKE, 8

- V -

Van NUS, 32
VaNATTA, 20
VanELSBERG, 37
VanVLEET, 26
VAUGEOIS, 38
VERNEY, 31, 32
VILANDER, 35, 37
VINSON, 17, 24
VISSER, 32
VLEMAN, 16

- W -

WAGNER, 33
WAGONER, 33
WALL, 22

WALLACE, 9
WARD, 11
WARREN, 15, 31
WEBB, 26
WEBER, 30, 31
WEIRICH, 11
WEISS, 28
WEITZENKAMP, 17
WEST, 11, 29, 30, 31
WESTFALL, 8
WHEELER, 31
WILLARD, 2, 9
WILLS, 33
WILSON, 15, 16, 27, 34,
35
WIND, 29, 30
WINSTON, 36, 37
WINTLER, 22
WISEHART, 36
WISENER, 10
WITTKE, 38
WOLD, 35
WOODS, 36, 37
WOODVILLE, 32
WOODWARD, 11
WORK, 20
WRIGHT, 26
WYATTE, 26

- Y -

YEAMAN, 18
YOUNGER, 31

- Z -

ZEEK, 28
ZEISSLER, 30, 31
ZIMMERMAN, 14

Answers to the Decipher these from Olmstead's letter on page 3:

1. Capt E P Lawton, C.S.A, Asst. Adjutant General, Military Dept of Ga (did you read the last name as Phantom? It could be, but a quick check did not find any Phantoms, but there were some Lawton names).
2. Very respectfully Your obt- sert- [obedient servant], Chas H Olmstead, Col 1st Vol Regs of Ga
3. and both the columbiads planted there; 8 inch & 10 inch columbiads, and Parrott's &
4. concentrated upon the "prom coupe'e"
5. the "Wisc Guards" -- the Wisconsin Guards
6. a. James projectile; b. Privates James Foster, c. Joseph Singer -- the letter J.
7. a. shapeless, b. dismounted or useless, c. it will be impossible, d. treated with much kindness -- all these phrases have at least one word using the "fs" to show a double s combination.

Clark County Genealogical Society Publications ~ Summer 1996

Clark County Pioneers ~ Through the Turn of the Century, Rose Marie Harshman - Biographical sketches of pioneers that settled Clark County and their descendants. A wealth of information for Clark County researchers and a treasured heirloom for family members. Many photographs, completely indexed, hard bound.. A companion to Clark County Pioneers ~ A Centennial Salute. \$4.00 shipping & handling.

91 pages, members \$49.50, non-members \$55.00

Clark County Washington Cemeteries

Vol. 1 Mildred Porter - Old City Cemetery of Vancouver, tombstone inscriptions, cemetery maps, sexton's records and some obituaries.

184 pages, members \$13.50, non-members \$15.00

Vol. 2 Includes St. James Acres, Salmon Creek Methodist, St. John's Lutheran, Pioneer & Fisher cemeteries, tombstones inscriptions, cemetery maps, funeral home & sexton's records.

217 pages, members \$13.50, non-members \$15.00

Vol. 3 Includes Post Military, Dead Lake (Fallen Leaf), Bethel Lutheran, Washougal Catholic, Sara Union, St. Mary of Guadalupe, Ridgefield, Chelatchie Prairie, Bethel Methodist, Mt. Zion & Highland Lutheran cemeteries.

274 pages, members \$13.50, non-members \$15.00

Vol. 4 Includes Washougal, Gardner (Hayes), Sacred Heart, Elim Lutheran, Amboy, Buncombe Hollow, Lewisville, Venersborg, Livingston and Mt. View cemeteries

274 pages, members \$13.50, non-members \$15.00

Vol. 5 Includes Brush Prairie, Yacolt, Hawk (Fairchild), Page (Red Rock), Sunnyside, Finn Hill, Sifton, Fern Prairie, St. John's Catholic, Hurt Road, Crawford, Gravel Point, Manor Wilson Bridge, Northwood Park & Memory Memorial Park

400 pages, members \$15.75, non-members \$17.50

Vol. 6 Camas Cemetery, contains plot maps, cemetery history, sexton's records including plot owner, funeral home handling service and information on many unmarked graves.

365 pages, members \$15.75, non-members \$17.50

Vols. 7 & 8 Evergreen Memorial Gardens, book one A - L, book two M - Z, sold as a set only, contains tombstone inscriptions, sexton's records, cemetery map, section and plot numbers, some obituary and family information, \$4.00 shipping & handling

over 960 pages, members \$35.00, non-members \$38.50

Vols. 9, 10, & 11 Park Hill Cemetery, Sold as a set only, contains tombstone inscriptions, sexton's records, cemetery map, section and plot numbers, some obituary and family information. \$4.00 shipping & handling.

1267 pages, members \$55.00, non-members \$58.50

Clark County, Washington, Census Records:

Vol. 1 Clark County, Washington Census of 1850 & 1860, Mildred Porter - Complete information on all members of household

68 pages, members \$6.75, non-members \$7.50

Vol. 2 1870 Census of Clark, Chehalis, Cowlitz, Jefferson & Island Cos., WA, Mildred E. Porter, complete information on all members of household

150 pages, members \$13.50, non-members \$15.00

Vol. 3 Clark County, Washington 1880 Census, Ralph and Betty Korff - complete information on all members of household

121 pages, members \$13.50, non-members \$15.00

Vol. 4 Clark County, Washington 1900 Census, Rex A. Harrison - complete information on all members of household

234 pages, members \$13.50, non-members \$15.00

Clark County Washington Marriage Books:

Vol. 1 Earliest available marriages through 1896, many Oregon residents married here

244 pages, members \$13.75, non-members \$15.00

Vol. 2 1897 - 1904, gives complete information for marriage applications

290 pages, members \$13.75, non-members \$15.00

Vol. 3 1905 - 1909, gives complete information from marriage applications

299 pages, members \$13.50, non-members \$15.00

Vol. 4 1910 - 1913, gives complete information from marriage applications

400 pages, members \$15.75, non-members \$17.50

Vol. 5 1914 - 1915, gives complete information from marriage applications

500 pages, members \$15.75, non-members \$17.50

Vol. 6 1916, gives complete information from marriage applications

217 pages, members \$13.75, non-members \$17.50

Vol. 7 1917, gives complete information from marriage applications

429 pages, members \$15.75, non-members \$17.40

Vol. 8 1918, gives complete information from marriage applications

485 pages, members \$15.75, non-members \$17.50

Vol. 9 1919, gives complete information from marriage applications

429 pages, members \$15.75, non members \$17.50

Vol. 10 1920, gives complete information from marriage applications

421 pages, members \$15.75, non members \$17.50

Clark County Genealogical Society Publications ~ Summer 1996

Vol. 11 1921, gives complete information from marriage applications
383 pages, members \$15.75, non members \$17.50

Vol. 12 1922, gives complete information from marriage applications
276 pages, members \$15.75, non members \$17.50

Vol. 13 1923, gives complete information from marriage applications
276 pages, members \$15.75, non members \$17.50

Clark County, Washington, Mortuary/Funeral Home Records

Knapp Mortuary Funerals 1907-1925, Geraldine Gilman
- Records of over 2500 funerals, includes additional 42 page *Supplementary Index of Knapp Mortuary Funerals*
418 pages, members \$18.00, non-members \$17.50

Knapp Mortuary Funerals 1926-1940, Geraldine Gilman
- Records of nearly 2000 individuals from Knapp Funeral Parlors. The records may include birth and well as death dates, place of & cause of Death, religious affiliation, attending doctor, clergy, parents & their place of birth
418 pages, members \$18.00, non-members \$20.00

Hamilton Funeral Records 1917-1929, Geraldine Gilman
126 pages, members \$9.00, non-members \$10.00

Camas Funeral Home Records 1912-1943, Mildred Greening Piontek - Over 6000 records
300 pages, members \$18.00, non-members \$20.00

Miscellaneous Clark County, Washington

Clark County Death Records, Courthouse, Book One 1891-1903, Colleen Bennett - Names, date of death, sex, age, marital status, residence, place of birth, names and birth places of parents, cause of death & signer of death certificate.
29 pages, members \$2.70, non-members \$3.00

St. Luke's Parish Records. Lesla Scott - Diaries of Rev. John McCarty, 1853-1868, and rev. Albert S. Nicholson, 1868-1886. Records of Baptisms, confirmation, marriages and burials
65 pages, members \$6.75, non-members \$7.50

Index to the Annuals of the Fort Vancouver Historical Society, 1960-1985, Full name index, cross referenced
110 pages, members \$6.75, non-members \$7.50

Skamania Co., Washington records:

Skamania County WA Births, Deed & Miscellaneous Records, Daphne Ramsey - births 1893-1926, deeds & miscellaneous records 1855-1894.
116 pages, members \$9.00, non-members \$10.00

Skamania County Washington, Cemetery Records, Daphne Ramsey - Includes cemetery records, abandoned graves, burial records & stories that tombstones do not tell.
165 pages, members \$13.50, non-members \$15.00.

Skamania County Washington, Marriages, 1854 - Jan 1931 (incomplete), Daphne Ramsey - Includes abstract of marriage registrations 1893-1920
196 pages, members \$13.50, non-members \$15.00

Skamania County Washington, Census records - 1860, 1870, 1880, 1885, 1887, Daphne Ramsey
100 pages, members \$13.50, non-members \$15.00

Miscellaneous

Diary of Cyrus Shepard, March 4, 1834 - December 20, 1835, Geraldine Gilman - Cyrus Shepard was a minister and teacher at Willamette Mission. He Traveled to Oregon with the Jason Lee party.
120 pages, members \$9.00, non-members \$10.00



All books are compiled by Clark County Genealogical Society, are printed double sides on 8 1/2" X 11" paper, are indexed, have paper covers and vello-binding unless otherwise noted.



Ordering Information



The postage for Clark County Pioneers (hardback), Evergreen Memorial Gardens (2 vol. . set), and Park Hill Cemetery (3 vol. set) is \$4.00 each. For all other books the postage for the first book is \$3.00 with .50 for each additional book. Washington residents add 7.6% sales tax. Members of Clark County Genealogical Society receive a 10% discount, as reflected above, on all CCGS Publications.

Send your order to:

Clark County Genealogical Society, attention Book Orders, P.O. Box 2728, Vancouver, WA 98668.

Exchanges? We will gladly exchange our books with your society on a page for page basis. Send inquiries to the above address, attention Exchanges.

LIVING LIFE MEMBERS

Marilyn J. Anderson - '92
E. June Andrews - '89
Mary Barnard - '95
Mildred Beck - '93
William Beck - '93
Veda DeColon - '89
Helen Erickson - '96
Elizabeth Ann Femling - '93
Herbert Femling - '93
Bette Forgy '93
Barbara Germann - '89
Jane Germann - '89
Evelyn Greenstreet - honorary
Rose Marie Harshman - '89
Mary Katschke - '93
Roy Katschke - '93
Jo-Ann Lee '93
Connie Lenzen - '92
Gerald Lenzen - '92
Dorothy Person - '89
Marilyn Shroll - '89
Philip Thompson - '93
Sandra Thompson - '93
Doris Wastradowski - '89
Sharon Wodtke - '93

FOUNDING PRESIDENT:

Margaretta Zimmerman
31Aug1911-19Feb1994

CONTRIBUTING MEMBERS

Judy Card (2nd year)

**Time to renew your
membership!**

**Support the NARA
(National Archives and
Records Administration) Fund
with a dollar donation when
your renew.**



Clark County Genealogical Society
P.O. Box 2728
Vancouver, WA 98668

ADDRESS CORRECTION REQUESTED

Non-Profit Org.
U.S. Postage Paid
Vancouver, WA
Permit No. 934