

A

ISSN 0362-0344

TRAIL BREAKERS

VOLUME 22 - No. 1 - FALL 1995



PRICE
\$3.75

CLARK COUNTY
GENEALOGICAL SOCIETY
VANCOUVER, WASHINGTON

TRAIL BREAKERS is published quarterly: FALL (October), WINTER (January), SPRING (March), SUMMER (June) by the Clark County Genealogical Society, P.O. Box 2728, Vancouver, WA 98668

BOARD OF DIRECTORS:

Jerri St. John	(360) 887-3766 President
Jennifer Warren	Vice-President
Lois Kullberg	Recording Secretary
Shirley Heiter	Treasurer
Anita Roberts	Ass't Sec.-Treas.
Fred Smith	Immediate Past Pres.

TRAIL BREAKERS STAFF:

Editor:	(360) 892-8019 Jane Germann
Assistant Editor	Barbara Germann
Ancestor Charts:	Roy Katschke
Book Reports:	Joanne Bortniak
Funeral Home Records:	Gerry Gilman
Surname Editor:	Delillah Knight
Vancouver Newspapers:	Pat Bauer
Queries:	Barbara Germann

DUE DATES for material from the individual editors are: August 15, November 15, February 15, and May 15.

The Editor accepts donation of "Articles," "Fill-ins," "How To's," "Biographies," etc. Any material for this may be left in the Editor's File at the CCGS Library and will be greatly appreciated.

Especially needed are articles of "Genealogical Experience." If you have one, call the Editor: This is OUR periodical. Please include information of source if a reprint. *If your submission is available in a word processing format, please let the editor know.*

Neither the CCGS or Editors of the TRAIL BREAKER accepts responsibility for errors of fact or judgement in the material submitted to and printed in the TRAIL BREAKERS. If errors are brought to our attention, we will try to correct them.

The Clark County Genealogical Society (CCGS) is a service organization dedicated to the collection and publication of the heritage of Clark County. CCGS offers assistance to genealogical researchers and family historians.

MEMBERSHIP: Membership is open to anyone interested in the collection and preservation of family and regional history. It includes a subscription to the **TRAIL BREAKERS**, a **DIRECTORY**, a nearly monthly **NEWSLETTER**, and free check-out privileges at the CCGS Library. Membership Chairperson: Sandy Thompson.

DUES: \$15.00 per year for an individual, \$20.00 for joint members (two people, only one publication mailing). Life membership is \$250, joint life (married couples only) is \$310. Contributing membership is \$50.00 or more per year.

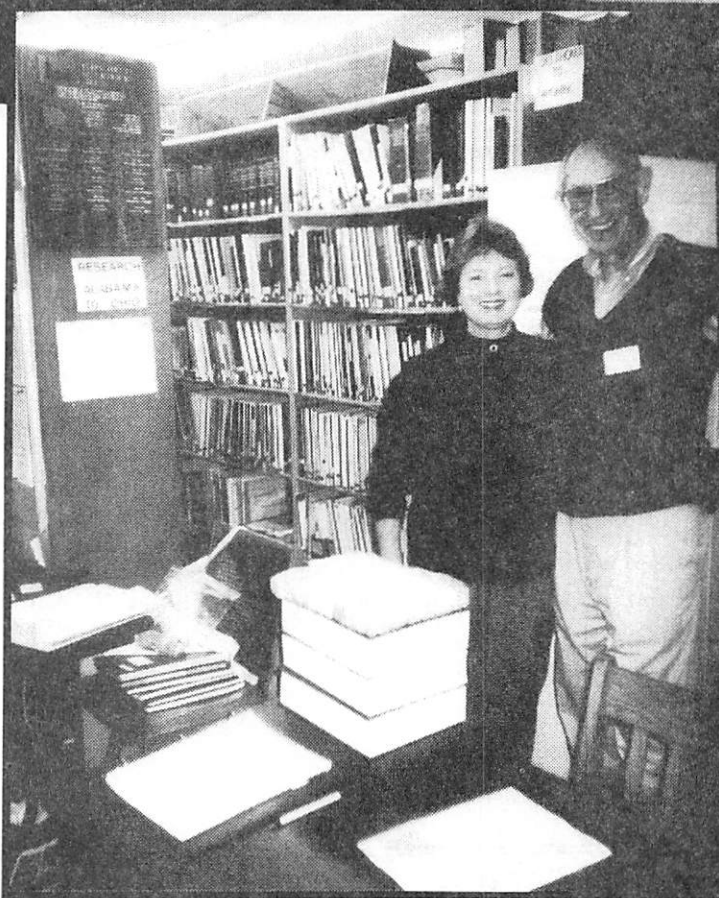
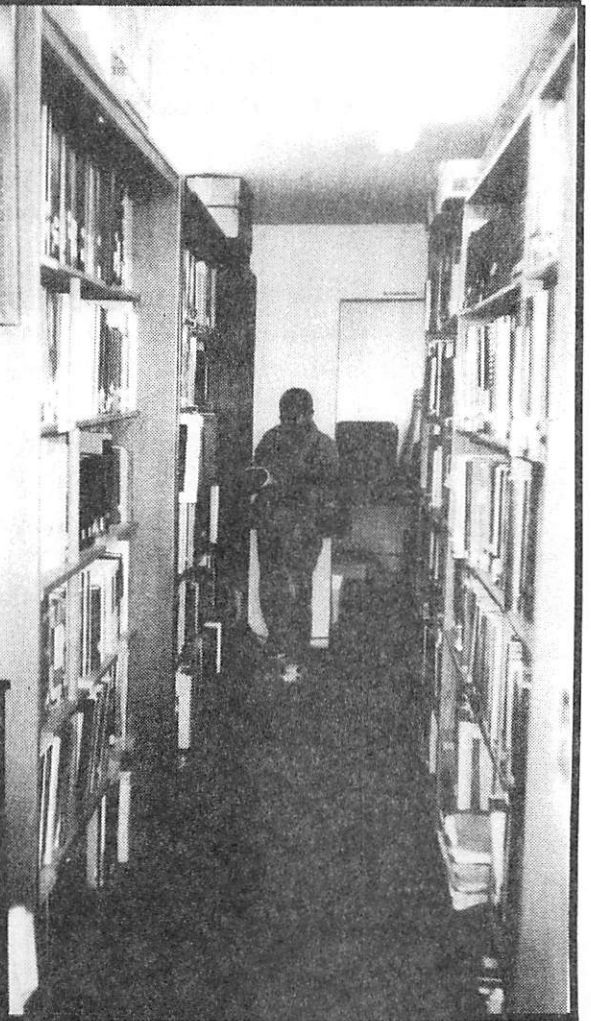
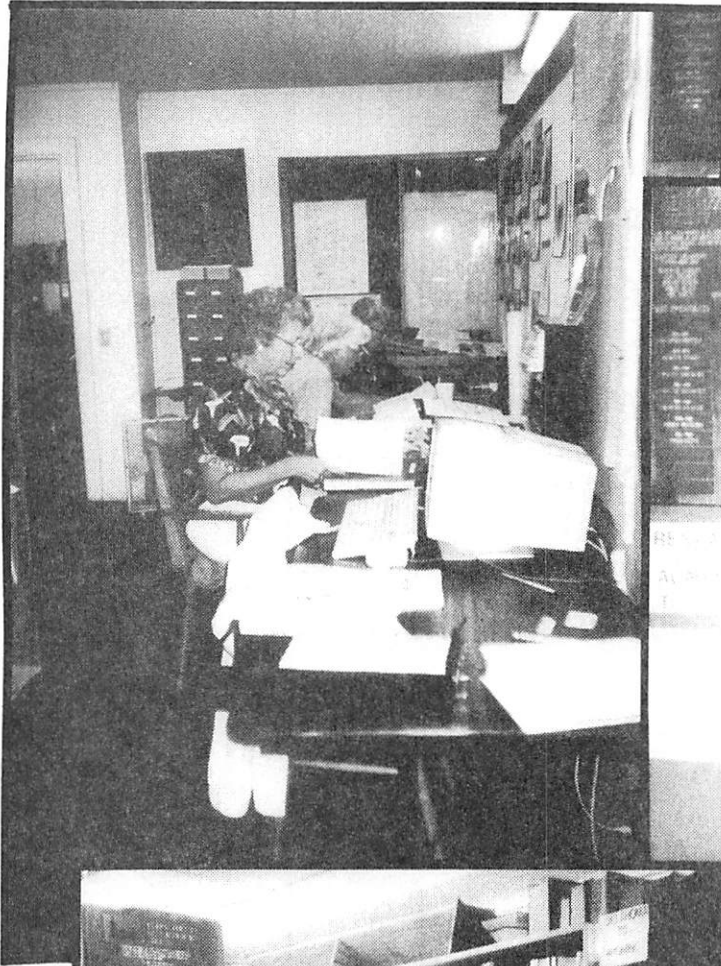
MEETINGS: Sept 26, (Tues.) 7-9 pm at the new LDS facility, 18300 NE 18th St.; Oct 25th (Wed) 10-12 with beginner first, Nov 4 (Saturday) Fall Workshop at Lupke Center, others to be scheduled. The CCGS Newsletter lists speakers and any changes. There is beginner instruction or computer interest group prior to most day meetings. Board meetings are held the third Tuesday. Inside the front cover of the *Directory* is a list of general, board, and special meetings with times and places.

LIBRARY: The Clark County Genealogical Society Library is located in the Fort Vancouver Historical Museum at 1511 Main Street, Vancouver. It is open to members and the public Tuesday through Saturday afternoons from 1:00 until 4:45 p.m. A large selection of supplies and forms are available for purchase. Head Librarian: Doris Wastradowski.

TABLE OF CONTENTS

SPACE - or the lack of it - that is the question or where does CCGS find more? by Jane Germann	3
World War II Military Deaths Remembered (a follow-up of the Spring 1995 listing) by Jane Germann.....	6
Berry Connections: A New Cousin! Maxine Vassar	9
Sunday Morning Call! New Cousins! Jane Chappell Germann	9
How Can I Get My Ancestor's Name in the Trail Breakers? by Jane Germann	11
New Books at CCGS by Joanne Bortniak	12
November 4, 1995 CCGS Workshop PUD 9 am - 3:30 pm	15
Knapp Mortuary Records (1942) extracted by Gerry Gilman	16
American/Schleswig-Holstein Heritage Society by Don D. Clausen	21
Vancouver Register (1869 Vancouver Newspaper) extracted by Pat Bauer	22
Ancestor Charts formatted by Roy Katschke	
Maureen Olivia (McCARTHY) WILSON	28
Hazel P.(PALMQUIST) KETTERLING.....	28
Florence Luetta (RICHARDS) MARTOCELLO	29
Harry M. HOWARTH	29
Surname File (Buckman toBurrows) by Delillah Knight.....	35
Queries by Barbara Germann.....	39
Genealogy Column Feature in Thursday Columbian (it is Donna Potter Phillips).....	40
Index	41
Clark County Genealogical Society Publications	44

*CORRECTION: p12 Summer 1995 issue: CCGS Surname List
SNOOK should read SHOOK for Dottie Baber*



Researchers at the CCGS library find plenty of resources on crowded shelves but limited space for doing research. The historical society's library is very conveniently located to the north (behind seated researchers).

Volunteer Clif Grant was librarian for the day and Lorie Okel was preparing exchange periodicals for the library shelves.

SPACE

**- or the lack of it -
that is the question!**

OR where does CCGS find more?

Space is the basic problem we have been discussing - again - recently. It's why CCGS has been looking for a new home or a larger space in our present abode. Or at least alternatives that could solve or even extend the time of this space problem.

Our library is located on the south side of a room which is shared with the Historical Society's library. About 10 years ago, the library was downstairs at the historical museum. It had shelves all around the three walls of the north section and folding doors were used to protect the books when the library was not open. It was hard for some of our members to walk up the steps to enter the building and then walk down to the library -- only to repeat it on leaving.

Moving upstairs brought half the steps and a more pleasant space. But we've been there for several years now and our collection has grown. When we have several people in the library, it is hard to find a space for examining books once they have been located. With additions of equipment like the donated computer, we are squeezing the ingenuity out of our librarians who are trying to fit increasing larger pegs into the same space.

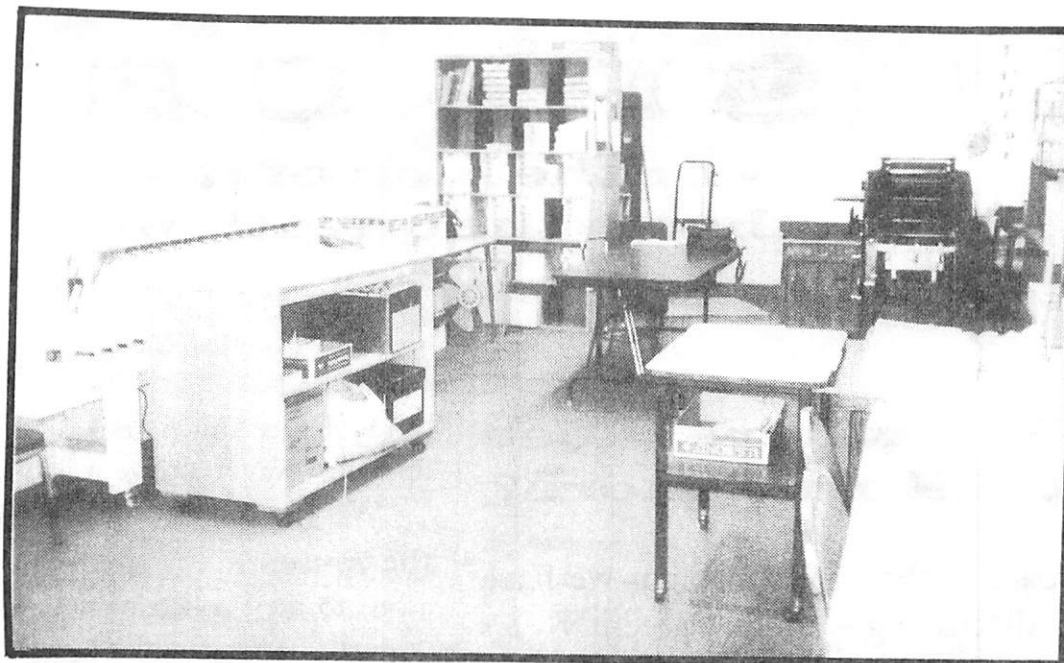
Recent discussions with the museum director have brought an offer of

storage space down stairs -- we haven't come up with a way to utilize it wisely.

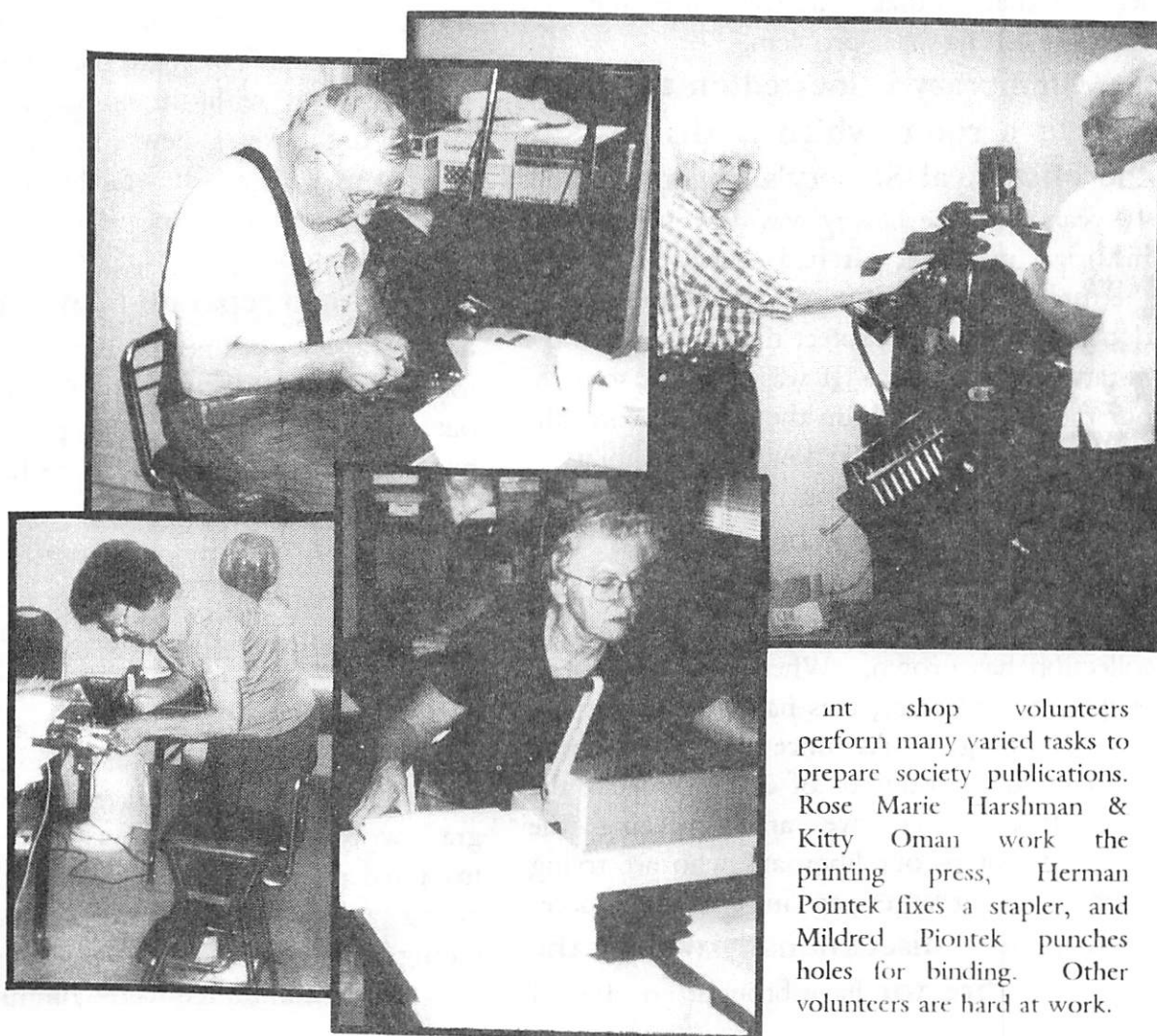
We have a lot of reasons to stay at the museum. It is easy to find. The easy access to their collections of newspapers, maps, original marriage records, city directories, etc. We are paying a generously small rent, so it is cost effective. Energy by CCGS members trying to find a new place and the money to finance it could be used on other projects. Joining forces with the historical society for raising funds for a new joint venture might provide us with a better facility than what we could find on our own. The museum needs more space too!

Having a separate facility does have advantages: We need more space for books, for computer technology, and for just spreading out. Hours could be independent of the historical society. We would be have pride in having our own facility.

Right now, money seems to limits our options. A new building is not feasible without fund raising. To get grants, we need a group of members trained for procuring grants. A building committee met several times this spring for the purpose of investigating the feasibility of a new facility and the process of grant writing. The transfer of Fort Vancouver from federal to local control will stretch the giving ability of our community and fund raising will be very difficult. The people who were on the committee were committed to our



The new space for the print shop is pleasant, dry and well lighted.



Print shop volunteers perform many varied tasks to prepare society publications. Rose Marie Harshman & Kitty Oman work the printing press, Herman Pointek fixes a stapler, and Mildred Piontek punches holes for binding. Other volunteers are hard at work.

society, but most were also already giving much time and effort and were feeling the time commitment required too much unless more committed people we found. (Many hands make light work!)

The result has been more questions rather than more answers! What was the real problem? (We did answer that one! SPACE!) Do we really need to move? What support would it take to keep the library at the historical society? What are the realistic goals for the museum -- and how do they fit with our needs and goals? Is there a reasonably priced place out there in the county that would be 'just right?' Maybe a historical building needing a historically based and/or non-profit group? Are there other alliances that would be beneficial?

Brainstorming some possible solutions for temporary space have brought some ideas: store part of the collection elsewhere like in closed stacks - but how would one librarian be able to access the materials requested?. Simply remove part of the collection - which part? But as you see, they brought new questions too. Looking at the library, we see well-organized and well utilized space. And just too little of it for housing a growing collection.

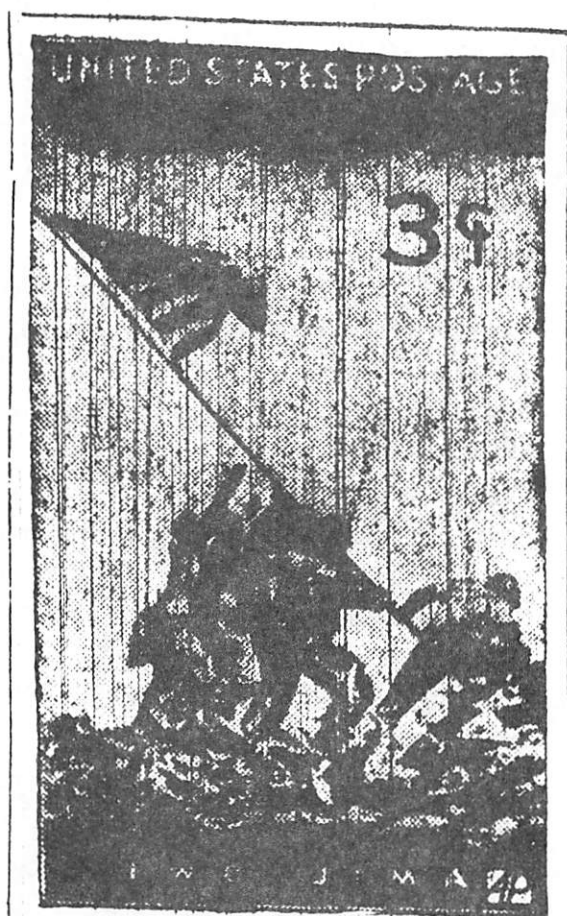
The print shop has a new home. When illness made it impossible to keep the printing press and other equipment at a member's home, the print shop was moved into a location in down town Vancouver. However, dampness in the basement made it difficult to work. The paper would get damp and not run through the press properly. So the last of August they moved into a new (and dryer) home. This has solved one space problem, but the library still needs space.

There are some questions a member came up with to help you and CCGS focus in on our needs:

1. How would you describe CCGS to a friend? How do you see our society functioning -- for what purpose?
2. What CCGS resources have you used over the past year? How have classes, programs, seminars, workshops, library, newsletter, Trail Breakers, etc., been helpful to you? What are the strengths of CCGS?
3. What keeps you from using CCGS resources and assistance more than you do in your genealogy quest? What would make it possible for you to use CCGS more advantageously?
4. What goals are important for CCGS? Can you help?
5. Key in on one or two things you would like to see CCGS do, provide or enlarge upon. What are they??

Ponder upon these questions. We'd enjoy having you write down your ideas and sharing them with the CCGS board. Mail to CCGS, P.O. Box 2728, Vancouver, WA 98668.

In October you will be receiving a questionnaire in the mail because CCGS needs your ideas, suggestions, and your commitment. Please return it with your comments.



Iwo Stamp— This is the new three-cent, purple postage stamp, featuring Associated Press Photographer Joe Rosenthal's famed Iwo Jima flag-raising picture. The stamp honoring the achievements of the marine corps, will be placed on sale first on July 11 at Washington, D. C. (AP Wirephoto). *Columbian p1 11 June 1945*

The *Columbian* plans to have a Commemorative Section on Sunday, October 29 -- the Sunday before the November 4 parade. If you have additional information or photos that you feel they would appreciate for this issue, call Tom Ryll 699-6006.

WORLD WAR II MILITARY DEATHS REMEMBERED

(A FOLLOW-UP OF THE SPRING 1995 LISTING)

by Jane Germann

Veteran's Day is November 11 -- it falls on a Saturday this year. Canadians call this holiday Remembrance Day. We take time to be thankful for our freedom because others who gave up their time and/or lives.

In Clark County, a parade will fall one week earlier, on Nov. 4. On Nov. 11, this year a list of those who gave up their lives will be read from the steps of the Court House in a 50th anniversary celebration. Check the *Columbian* for details.

Because of the shipyards and Officer's Row, Vancouver is being recognized as an "official" commemorative city. Several across the United States are being so designated.

The Spring 1995 issue of the *Trail Breakers* carried a first article with a list of those Clark County men (and one woman) who lost their lives during war time. Additional research has brought forth much more information. This was a time period when the community wanted to know about those who were off to fight as well as about those who gave their lives. Coverage was front page and in special columns.

For the genealogists, the newspaper can be a gold mine of information about a military connection. When a serviceman was decorated, wounded, missing, or killed, often a front page article announced the news including a photo when available. There was a "With the Services" column which gave current information on several service men. It would give service duties, men home on leave, letters, etc. Here are some examples:

Capt. Robert Woodworth who is now stationed in Austria, while on leave to the British Isles spent two days in Scotland with his brother-in-law, **Lt. Irwin Landerholm**, who he had not seen for three years.

Captain Woodworth is the son of **Mr. and Mrs. R.D. Woodworth** of route 4, and Lieutenant Landerholm is the son of **Mr. and Mrs. Carl Landerholm** of 2901 Fruit Valley road. p3 25 July 1945

Bob Golden, 17 year-old son of **Mr. and Mrs. Thomas Golden**, 200 E. Thirty-eighth st., Vancouver, who recently took his physical examination at Seattle for enlistment in the navy, has received his notice to report and will depart for San Diego naval training base tomorrow, it was stated here. Golden was the winner of a Golden Glove championship of Oregon, having represented Vancouver at the bout. p3 25 July 1945

Orrell A. Peru, a sheet metal specialist with the 86th fighter group was promoted to staff sergeant on June 9, it is reported by a 12th tactical air command fighter group in Germany. Sergeant Peru is a graduate of battle Ground high school and attended the Pacific university in Forest Grove, Ore. Before entering the service, he was employed by the Boeing Aircraft company. His parents, **Mr. and Mrs. A.L. Peru**, live on aBittle Ground route 1. p3 25 July 1945

C.D. Donaldson, aviation chief machinist's mate, 3777 E. Seventh st., Vancouver, is back at the business of fighting Japs after a recent three-hour rest period on one of the navy's recreation islands in that war zone. The recreation islands have been set up on the tiny atolls to give navy men a few hours to relax between battles, according to the release coming from an aircraft carrier in the Pacific. p3 25 July 1945

Needless to say, the family of **Pfc. Glenn E. Lorentz** of 3307 S st., were somewhat astonished when five army ambulances with 17 patients drew up before their house recently. Through the thoughtfulness of the captain in charge of the ambulances, and since Private Lorentz was the only local man in the group, the vehicles were routed by his home so that he could see his parents for a few minutes before going on to Barnes hospital to be treated for wounds received overseas. The son of **Mr. and Mrs. J.S. Lorentz**, he arrived in Vancouver on June 8 after being wounded in Germany, east of the Rhine, on April 8 while serving with the Ninth army. He went overseas in February of 1941. p4 19 June 1945

Warren R. Gillis, CM 1/c, son of **Mrs. Myrtle E. Gillis** of 1212 V. st., was recently transferred to Corvallis for hospitalization, from a general hospital in the Marianas where he had been confined wince August 2 with head lacerations. In recent telephone conversations with his mother he indicated that he expected to be able to come home soon. One of his brothers, **Tom Gillis**, was killed the first week after Pearl Harbor in the Philippines, and a second brother, **Robert L. Gillis**, was killed at Palalau while serving with the marines in September of 1944. Mrs. Gillis has a fourth son, **Jack**, aged 16, who is at home. p2? 16 Nov. 1945

Silver Star for Husband -- **Mrs. Patricia Baker**, of Orchards, is picture (above of Patricia and small son) receiving from **Colonel Loyd D. Bunting**, of Vancouver Barracks, the silver star medal posthumously awarded to her husband, **Private Clifford Howard Baker**. Their son, **Clifford**, looks, on. The silver star was awarded for gallantry in action from Nov. 14, 1944, to March 8, 1945, when, according to the citation, "Private Baker distinguished himself in a number of instances by his outstanding courage and leadership." p? Nov. 16, 1945

Due November 16 aboard the U.S.S. Chanute Victory, two local veterans are expected to arrive in New York harbor today. They are **Pfc. Donald M. Holmes** and **Pfc. Kenneth S. Forrest**. Delayed dispatches from the Associated Press listed other recent arrivals as the S.S. Matthew at Boston, with **Pfc. Dean Sigler** of Ridgefield, and the S.S. Nery Wilson at New York, carrying **M-Sgt. Howard Gible** of Vancouver. At San Francisco **Lt. Clifford F. Severson** came in aboard the Thomas Jefferson. p? 16 Nov. 1945

Writing from the U.S.S. Ozark in Tokyo bay, SF-2c **Alfred L. Grathouse**, of Vancouver, describes a ship-to-ship transfer of men before the landing in Japan. "The first ship to come alongside was the U.S.S. Bon Homme Richard," he writes, one of the navy's big carriers. As she came alongside our port side line-throwing guns fired lines across and breeches buoys were rigged, fore and aft. In a few minutes, men were pouring across the 75-foot gap. As transfers were completed . . . another moved up to take its place until 1,016 officers and men had been received from over 20 ships. His vessel's present assignment is loading American Prisoners of was, he states. p? 16 Nov. 1945

Another column that appears almost weekly was called "Dear GI Joe and Jane" and contained local news as well as news of local servicemen. It was meant to be easily clipped out for the reader to mail. News of servicemen included those home on leave, entering or discharged from service, wounded or killed in action. Selections from June 29, 1945 (p6):

THE CASUALTY LIST:

Killed in action -- **Winston Leonard Churchill**, fire controlman third class.

Wounded -- **Pfc. John J. Browning**, 2nd Lt. **Robert A. Dilling**; Pvt. **Lawrence L. Baker**, and **Pfc. Marion M. Williams**, all in the Pacific theater.

Released from prison camps in Germany -- S/Sgt. **Alvin M. Rabun**, and S/Sgt. **Ralph K. Spence**.

Two Vancouver boys, one in the coast guard, the other in the army, had a reunion at the all-India swimming meet at the Agra, central India, air depot last month. They were **Chief Pharmacist Mate Herman J. Becker** and **M/Sgt. Joseph P. Augenblick**. The two service men swam together on Vancouver high school teams, and hadn't met since they left high school six years ago. Both had taken time out from their duties in widely separated parts of the India-Burma theater to attend the meet. And they had their picture in the paper the other day.

The list printed in the Spring 1995 issue of the *Trail Breakers* was a compilation of at least two lists printed in the *Columbian* in 1945 time period and filled in with research from military books such as those that some service produced giving lists of killed in action and prisoners of war.

Since then, checking cemetery books from CCGS and reviewing microfilm copies of the *Columbian* at the library have filled in a lot of those NFI - no further information, and added information not known before. Some new names have come forth and correction in spelling made or confirmed. For example, **Artley** may be **Actley**, **Burcstahler** is **Burgstahler**. **Lyle Lee Briggs** of 317 W. 41st Vanc, on one of the newspaper lists, was left off the combined list. The *Columbian* ran a story about **Willard F. Mitchell** of was serving overseas and was returning home, terminal from Leukemia, but died in Honolulu and was buried there.

Several Clark county men were killed when Americans hit enemy ships carrying POWs. It was confirmed that the **Tom and Robert Gillis** were brothers (see excerpt earlier in this article) and that

Lon F. McNett family had lost son **Pfc. James McNett**, a marine, on Iwo Jima, son **Lt. Warren McNett**, USN was wounded and could be the **William** on the list and son **Clinton** was a marine in San Diego. Another son **John** was still at home. A complete list may never be completed, but check the vertical file at CCGS for updated information. .

Below is a photo of **Pfc. Sidney J. Baeschlin** printed on the front page of the Nov. 16, 1945 *Columbian*:



Honored — Pfc. Sidney J. Baeschlin who died in an assault on an enemy pillbox in France, has been posthumously awarded the Silver Star medal. His father received the award in a formal presentation at Barnes hospital.

BERRY CONNECTIONS: A New Cousin!

CCGS member Maxine Vassar sends this success story: 'Sometime in February/March 1995, I received information on BERRY BY LINE by Pioneer Publication's Shirely Penna-Oakes, P.O. Box 348 Elk, WA 99009. I noted several similarities in the BERRY family published in Vol. 5, page 22, Branch No. 20 submitted by Mrs. Carol WIGGINS, P.O. Box 1001, Arlington, WA 98223. I wrote to her and sent her copies of my information on my BERRY family. Carol not only confirmed 'bur' family connection, but has sent me copies of her document's on "our" BERRY family.

Our grandmother Rebecca Sophia BERRY VASSAR was a sister of their great grandmother Anna Eliza BERRY WIGGINS. And according to Rebecca & Benjamin Franklin VASSAR's marriage certificate, they were married in the residence of William & Anna Eliza WIGGINS home in Council Grove, Morris County, Kansas."

Census Records indicate the father of Benjamin Franklin VASSAR was born in MA -- so she has a great clue for further research.

Maxine and Carol have exchanged documents & pictures. This is Maxine's new branch:

4. VASSAR, Benjamin Franklin b. 7 Jan 1862, Galesburg, Knox Co. IL, d. 8 Aug 1923 Portland, Multnomah Co. OR, m1 15 Mar 1885 Council Grove, Morris Co. KS to Rebecca Sophia BERRY, res: Elm Creek Twp, Wilsey, Morris CO, KS

5. BERRY, Rebecca 'Becky' Sophia b. 6 Apr 1866 Iowa City, Johnson Co. IA, d. 13 Apr 1954 Salem, Marion Co, OR.

10. BERRY, Peter Stephen b. 1824/25 PA, d. 1874, IA (1870 res. Elm Creek Twp, Wilsey, Morris Co, KS by wagon train, became ill working claim and return to IA) Ten children - five boys, five girls.

11. WADE/WAIDE, Tabitha/Tobitha Alyitha/Alvira b. 1827/28 OH, d. 10 Feb 1891, Wilsey, Morris Co, KS, bur in Wilsey Cemetery (Tabitha BERRY apparently m2 and remained with claim in KS; connected names: PIVATE?PIATT, KYLE.

20. BERRY, Henry b. 30 Sept 1797 PA, d. 20 May 1880, seven children (5 boys, 2 girls) -- From PA three brother migrated to IA and res there then to KS.

21. _____, Mary b. 11/14? Nov 1803, d. 11 Aug 1877,

SUNDAY MORNING CALL! NEW COUSINS!

A new cousin! Actually a new step-cousin! A phone call Sunday afternoon brought the news. I finally got in touch with someone who knew my Dad's Uncle George Chappell who had died in Spokane about 1945. The Edwards had not read their *Spokane-Review* that morning before going to church. They came home to telephone calls with --"Did you see--." "Did you see your name in the queries? That's you isn't it?" They checked - it was. Minnie Edward Chappell was their connection. She had had children by a previous marriage and they had appeared in her obituary. Thus the link had been made.

After talking with the Edwards, it was discovered George and Minnie had probably lived together for several (157) before marrying. [Good story stuff] I had looked for five years after the earliest date in Spokane. I hadn't thought to look for the five years just before George died. I had just thought they got married somewhere else?

How did the query get in the paper? I'm not sure. I think someone pulled it out of the Trail Breakers when they saw the Spokane local mentioned. And then to top it off, some kind individual sent a copy of the Chappells in the current phone listing as well as a copy of the query. They got a Thank You note!

Jane Germann, 10209 N.E. 157 Ave. Vancouver WA 98682.

SURNAME CARD EXAMPLES:

Sample A

DOE, John Q.

A-001 MAR 94

b: 29 Sep 1842 Niles, Berrien Co, MI
 s/o Albert Doe and Vera Miller
 m: 17 Dec 1865 Mercer Co, MO
 d: 8 Apr 1922 Clark Co, WA
 bur: Old City Cemetery, Vancouver, WA

WIFE: JONES, Nancy

b: 14 Oct 1847 Mercer Co, MO
 d/o Abraham Jones and Mildred Smith
 d: 15 Sep 1895 Clark Co, WA
 bur: Old City Cemetery, Vancouver, WA

Contact: John Q. Surname
 1234 Main Street
 Amboy, WA 98601

Sample B

JONES, Nancy

A-001 MAR 94

See: DOE, John Q.

Contact: John Q. Surname
 1234 Main Street
 Amboy, WA 98601

Sample C

GIBBS, Nathan Bernard

K-039 MAR 94

b: 29APR1887 Pierport, MI, d: 18JUL1970 Crandon, WI; fath: David GIBBS
 (b: 28AUG1845 London, ENG, d: 25AUG1919 Argonne, WI); moth: Penelia
 M. FULLER (b: 15JUN1855 Brasher, NY, d: 03MAR1934 Ladysmith, WI);
 wife1: Bertha Mary WILDNER (b: 03JUL1889 AUS, d: 05FEB1964 Antlgo,
 WI), m: 10AUG1909 Jennings, WI; dau: Blanche Dora GIBBS (b: 11JAN1910
 Jennings, WI, d: 17JUN1981 McNaughton, WI); son: Harvey Douglas GIBBS
 (b: 14APR1912 Jennings, WI, Living: Pelican Lake, WI); dau: Jeanette
 Margaret GIBBS (b: 07DEC1913 Jennings, WI, Living: Crandon, WI); son:
 Percy Elmer GIBBS (b: 23MAR1915 Jennings, WI, Living: Crandon, WI); dau:
 Myrtle Elsie GIBBS (b: 10MAY1916 Jennings, WI, Living: LaFeria, TX); dau:
 Violet Esther GIBBS (b: 10MAR1918 Jennings, WI, Living: Lebanon, OR);
 dau: Lorraine Mabel GIBBS (b: 26JAN1921 Jennings, WI, Living: San Diego,
 CA).

CONTACT: Roy KATSCHKE, 14413 NE 185th ST, Battle Ground, WA
 98604-9254

How Can I Get My Ancestor's Name in the *Trail Breakers*?

There are several ways to get your ancestor into this quarterly:

QUERIES

Queries are presently open to any genealogists or researcher. They are short requests for information about a research problem. While some magazines charge for publication, the *Trail Breakers* prints at no cost. You need to identify the information you are seeking, print all names for correct spelling and include your name, address, and phone number (optional). See examples on pages 38-41 of this issue. Usually the two or three pages just before the index are allotted to queries. This is a quick way, not only to get your names "but there," but to help you focus in on your own research.

"SUCCESS STORY"

Have you had a success story? A great find? An interesting path to getting information? This is another way to get your surname(s) into print. The story may be only a few sentences long -- or several paragraphs. Look for examples in last year's *Trail Breakers*. This is a free source of promoting information that other can read - and may respond with information or connections.

ARTICLE

At present, articles are generally limited to Clark County People UNLESS they include information that give ideas to other researchers or are unusual in content (not too hard to do). When possible, a family sheet and 5-generation pedigree chart should be included with the material presented. Photographs that are interesting are also desirable. Always include your name and address.

SURNAMES AND ANCESTOR CHARTS

The SURNAMES list and ANCESTOR CHARTS are open only to members. New members get an information sheet in their packet telling how to submit information.

If you already have your data in a program with GEDCOM capability, it is easy. Simply generate a GEDCOM file that includes all (or just you, your family, your ancestors, and their families) of you data. Mark the disk with your name, member number, address, and phone number. Roy Katschke will then prepare the Ahnentafel List¹ for the Trail Breakers and Library and print up Surname Cards for the Surname Files.

You can also submit **hand written charts** and cards. For surname cards, follow the samples shown on the opposite page. [At present only five generations of surname cards may be filed due to space available.]

Roy will for a limited times accept back-up - not original - files for programs he has on his computer. He then has to take additional time to GEDCOM the file which you should have learned how to do anyway, so he obviously prefers receiving GEDCOM in the first place.

Files are published in the order in which Roy received them. He will try to give you a call just prior to publication to see if you have any updates to include.

Ready to give your ancestor a place in the CCGS *Trail Breakers*? It could lead to new cousins!

¹ An Ahnentafel List (see Ancestor Charts, page 28-33) allows full spellings and a compacted format for printing. Some programs will print only so many spaces and may cut off information when printing pedigree charts; thus the listing is the preferred submission for the *Trail Breakers*.

NEW BOOKS AT CCGS

by Joanne Bortniak

These new acquisitions have been reviewed by Joanne Bortniak. Those marked with an R or Ref will be kept in the reference section of the CCGS library. The library is located in the historical society building at 1511 Main Street, Vancouver. Other books will be available for members to check out after a short time on the "new books" shelf.

**R310 1860, 1870, 1880 CENSUS OF WHATCOM
WA COUNTY WASHINGTON**

Including San Juan islands and present Skagit county Census includes name of family members as well as head of household, ages, sex, occupation, value of real estate, personal property, birthplace. 1870 also includes if parents are foreign birth. Each census has a Surname index.

R310 1889 CENSUS WHATCOM COUNTY W.T.

WA Information extracted from the microfilm of the Territorial Auditor's Census of names of persons residing in Washington Territory on the 1st Monday in April, 1889. Includes name, age, race, marital status, birthplace, occupation and microfilm page. Indexed. 127 pages. ©1989. Closes with a copy of the telegram declaring WA to be a state.

R312.3 CEMETERY RECORDS OF WHATCOM

WA COUNTY SERIES 2 VOLUME 1 by

Whatcom Genealogical Society. Bellingham, WA. There are 288 pages of names listed alphabetically, and an index listing 2400 more family connections also in alphabetical order, cross referenced with page where mentioned. This book was under Dr. Christenson's direction.

R312.3 CEMETERY RECORDS OF WHATCOM

WA COUNTY TO 1 JULY 1974 Compiled by

Earle H. Christenson. This was published before the series 2 volume 1 book. The various cemeteries are mentioned with a listing of those buried there. There is also an index in alphabetical order giving volume and page number. 228 pages. ©1976.

974.4 CHATHAM [Massachusetts]

MA Originally four parts. by William C. Smith

Presented by Clifford Chase. This history covers 1606 to 1887. Some Indian names are included in the index. The census for 1790 for Chatham is

included. The author includes much hard to find information, a collection of facts. 431 pages ©1971.

R312.5 CLARK COUNTY WASHINGTON

WA MARRIAGES 1920 VOLUME 10

Volunteers, chaired by Eva Jane Matthies, completed this volume ten. Place of birth, ages, occupations, parents, ministers and app. numbers are included. The index lists both brides (under maiden name) and grooms and a listing of ministers, judges, and frequent witnesses not included in general index. 421 pages. ©1993.

020 COLLECTION IN BELLINGHAM PUBLIC

WA LIBRARY The listing of genealogy books include many that are not in the genealogy section, noted with an asterisk. 21 pages.

070 GOLD RUSH DAYS VOLUME III

CA MISCELLANEOUS RECORDS 1856-1862

Copied from early newspapers of Stockton, CA. Compiled by The San Joaquin Genealogical Society. The complete articles can be obtained from the Stockton Public Library or the San Joaquin Genealogical Society for a small fee. The information is entered alphabetically by surname.

R312 GOLD RUSH DAYS VOLUME V BIRTHS,

CA DEATHS, AND MARRIAGES Copied from

early newspapers of Stockton, CA 1861-1932. Compiled by The San Joaquin Genealogical Society. The complete article can be obtained from the Stockton Public Library or the San Joaquin Genealogical Society for a small fee.

R325.21 INDEX TO LAKE COUNTY, INDIANA

IN NATURALIZATION RECORDS 1854-1932

By Lake Michigan Northwest Indians genealogical Society. This is an alphabetical listing containing last name, first name, age, birth country,

year of document, book page, and type of document (Intention, Petition, Application or Naturalization). 191 pages. ©1992.

R977.2 INDEX TO LAKE COUNTY, INDIANA
IN SCHOOL ENUMERATIONS 1890 & 1896
FOR TOWNSHIPS CALUMET, CEDAR
CREEK, CENTER, EAGLE CREEK, HANOVER,
HOBERT, LOWELL, NORTH, ROSS, ST. JOHN,
WEST CREEK, WINIFIELD. The two years are listed differently: 1890 lists the head of household/guardian, number of children between 6 and 21, township and district in which the family lived. 1896 lists the names and ages of each child between 6 and 21, head of household/guardian, and township and district in which the family lived. 41 pages and 94 pages.

070 INDEX TO OREGON NEWSPAPER
OR CLIPPINGS 1895-1952 Transcribed by Alice (Stansfield) Herzberg for the Rogue Valley genealogical society. In the library of the Rogue Valley genealogical society are a series of scrapbooks of OR newspaper clippings. Some clippings are long lists of names of folks who came to OR pioneer reunions, some are obits, old settlers' stories, history of some OR towns. 149 pages. ©1995.

R325.21 INDEX TO PORTER COUNTY, INDIANA
IN NATURALIZATIONS 1849 - 1955 By Lake Michigan Northwest Indians Genealogical Society. This is an alphabetical listing containing last name, first name, age, birth country, year of document, book page, and type of document (Intention, Petition, Application or Naturalization). 119 pages. ©1992

978.8 LOGAN COUNTY BETTER BY 100
CO YEARS. (COLORADO) A Centennial History of Logan County, Colorado 1887-1987. Bud Wells, Editor. Presented for Marjorie Hector. Yearly history at start of book. Something about the county. Family histories in alphabetical order. Surname index by topical section or family section. 534 pages. ©1987.

R312.5 MARRIAGE CERTIFICATES OF
WA MISCELLANEOUS PIONEER FAMILIES
CLARK COUNTY, WASHINGTON 1864-
1912 VOLUME 1 Presented by Margaretta

Zimmermann Family. This is a collection of 158 marriage certificates. The index is in volume 2.

R312.5 MARRIAGE CERTIFICATES OF
WA MISCELLANEOUS PIONEER FAMILIES
CLARK COUNTY, WASHINGTON 1864-
1912 VOLUME 2 Presented by Margaretta Zimmermann Family. This volume continues through 311 Marriage certificates. The index is Alphabetical containing both bride and groom.

R312.5 MARRIAGES WHATCOM COUNTY
WA WASHINGTON 1898 - 1902 Includes information from License & Affidavit book #2 not recorded in marriage record book 3. A brides index in the back. 89 pages.

R929.13 MOCHEL, ED 1993 SURNAME INDEX
Moc Surname index for St. Louis Genealogical Society. Includes addresses and telephone numbers.

974.5 THE NARRAGANSETT HISTORICAL
RI REGISTER. A magazine devoted to the
Antiquities, Genealogy and Historical Matter
Illustrating the History of the State of Rhode Island and
Providence Plantations Volume 4 James N. Arnold, Editor. This is a Heritage Classic Book. "The aim of this "magazine" originally Published in 1885-1886 was to collect into one publication the history of the state of RI and preserve all information of any historical value...The subjects presented are concise, yet chained together with great skill..." Included are births, marriages, historical notes, poetry, queries and much more. Index at the front of the book. 336 pages. ©1994.

979.7 PIONEERS OF PEACE DIAMOND
WA JUBILEE 75TH ANNIVERSARY BLAINE,
WA 1884-1959. Aug. 2-8. by WHATCOM
GENEALOGICAL SOCIETY Bellingham, WA. There are many photographs and many people mentioned in this history of Blaine. Churches, organizations, schools, civic leaders. 119 pages. Indexed for both names and photographs.

977.2 PORTAGE TOWNSHIP SCHOOL
IN RECORDS PORTER COUNTY, INDIANA
1895-1920 Compiled by Carol Crook, LuAnn Connors and Donna McCormick. The index includes all of the pages where a name is found. 82 pages. ©1991.

R979.7 ROTH'S HISTORY OF WHATCOMWA COUNTY WASHINGTON VOLUMES I

AND II Index. pub. 1926. Approx 22,270 names and 31,600 page entries. Maiden names included. After each name the volume and page number is given. includes stores, businesses, etc as well as people. 1983.

R312.7 SAN JUAN COUNTY, WASHINGTONWA TERRITORY WILL BOOK ONE Whatcom

Genealogical Society. Complete name index was added by the society, compiled by Dolores Dunn Ackerman. Page number, name, occupation, witnesses, executors, family names are included.

R310 SKAGIT COUNTY W. T. (WA TERRITORY)

WA 1885 CENSUS Information includes name, age, sex, color, occupation, marital status, birthplace and citizenship. Names of family members are included. The 60 pages includes a surname index. ©1986.

979.5 TREASURES OF THE OREGON COUNTRYWA IV FACTS OF THE PACIFIC NORTHWEST

by Maynard C. Drawson. Presented by Richard

Grafton. An interesting account of many places and people on both sides of the Columbia River. 217 pages. ©1977

✓ R310 VERMONT 1771 CENSUS

VT By Jay Mack Holbrook. Presented by Gerry

Gilman. Listed alphabetically by surname: followed by given name, year of the record, place of residence, purpose of record, source of information. Bibliography. 102 pages. ©1982

979.5 VOICES OF THE OREGON TERRITORYOR CONVERSATIONS WITH

BULLWACKERS, MULESKINNERS,
PIONEERS, PROSPECTORS, '49ERS,

INDIAN FIGHTERS, TRAPPERS, EX-

BARKEEPERS, AUTHORS, PREACHERS, POETS
& NEAR POETS & ALL SORTS & CONDITIONS
OF MAN By Fred Lockley. Presented by Gerry Gilman. Stories told by or about 140 people and recorded by Fred. Indexed. 363 pages. ©1981.

R310 WHATCOM COUNTY WASHINGTONWA 1871-1885-1887 TERRITORIAL

AUDITOR'S CENSUS. Each is followed by a surname index. Includes name, age, color, occupation, marital status, birthplace, if mother and father were foreign born(doesn't say where) and if there is a male citizen 21 or over.

R310 WHATCOM COUNTY WASHINGTONWA 1910 U.S. CENSUS. VOL 1 Pages B1

- B154. 1987. There are about 32 kinds of information about people in this census. See the Surname index book to find page you want.

R310 WHATCOM COUNTY WASHINGTONWA 1910 U.S. CENSUS. VOL 2 pages B154

B294. 1987. There are about 32 kinds of information about people in this census. See the Surname index at back of volume 4 to find page you want.

R310 WHATCOM COUNTY WASHINGTONWA 1910 U.S. CENSUS. VOL 3 pages W1-

W167. 1987. There are about 32 kinds of information about people in this census. See the Surname index at back of volume 4 to find page you want.

R310 WHATCOM COUNTY WASHINGTONWA 1910 U.S. CENSUS. VOL 4 pages W167 -

W302 1987. There are about 32 kinds of information about people in this census. See the 55 page surname index at back of book. This is the same index as the book, surname index following.

R310 WHATCOM COUNTY WASHINGTON 1910WA U.S. CENSUS. VOL 1 SURNAME INDEX

55 pages. 1987.

929.11 WHATCOM GENEALOGICAL SOCIETYWA SURNAME INDEX, VOLUME IV - 1993

56 pages

929.2 THE BOOK OF WILDERS AWI SUPPLEMENT OF UNATTACHED

BRANCHES TO THE BOOK OF WILDERS
Wilder, Edwin H., M.D. Presented by Gene

Kuechmann. Some of these families have now been found to be related to the original Book of Wilders. Most have not, but will be if proof can be offered. 264 pages.



VERTICAL FILE:

929.2 CHURCH A sketch of the life of Henry Church and Hannah (Keine). Both lived to be over 100. Acc 4378

929.2 THE GILMAN FAMILY Presented by Gerry GI Gilman. Information on several people from the Gilman line including marriage certificate, will, guardianship papers and various articles. Acc 4376.

R929.1 LANGUAGE BANK FROM THE ALTRUSA CLUB OF CLARK COUNTY WASHINGTON A listing of the names of individuals of our county who are willing to be called upon to be interpreters for the language under which their name is found. 1991. Acc 4377

929.3 THE McLAUGHLIN: A HISTORICAL SKETCH OF WILLIAM GILBERT LAFAYETTE McLAUGHLIN Presented by McL Gerry Gilman. Acc 4375.

312 MISCELLANEOUS IOWA VITAL IA STATISTICS Presented by Arlis Renfro. Newspaper records from 1850s. Listed in alphabetical order, Davis County, IA death 1897-1900. Early church vital records. Mahaska County marriages 1872. Mahaska County, IDA Probate 1844-1851. Mahaska County deaths 1933. Index to land patents of Keokuk County IA. Also deaths 1880-1885. Acc 4380

R929.15 SCHOOL YEARBOOK DIRECTORY WA ARTHUR R. WATSON MEMORIAL GENEALOGY LIBRARY. 3RD ST BOOK EXCHANGE 1615 MARYSVILLE, WA 98270. A LISTING OF YEARBOOKS WITH THE YEAR. ABOUT 800 LISTINGS. INFORMATION CAN BE COPIED, BUT BOOKS ARE NOT FOR SALE UNLESS DUPLICATE. MOST ARE FOR WA AND OR STATES, BUT THERE ARE OTHERS ALSO LISTED. ACC 4409

NOVEMBER 4, 1995 CCGS WORKSHOP PUD 9 am - 3:30 pm

Beginning Genealogy is the theme of this fall workshop. This is a good time to invite a friend who is showing interest in genealogy. But don't think you'll be left out. As both speakers share information, they may bring up some ideas you've forgotten about or bring in some research techniques that could hone your own skills.

"Keeping Tracks: Genealogical Forms and How to Use Them," is the morning topic discussed by Jane Germann. She will be sharing much along the lines of her presentation at the Clark College Fall classes presented by CCGS. Jane also does land and court house records. As she shares how to fill out a family sheet, she shows how information from local sources were used to compile a family of fourteen children. Organizing information becomes a challenge as files grow -- she will share ideas gleaned from others and her own experience.

Gerry Lenzen will be the afternoon speaker. He just presented his **"Exploring Your Roots: How to Begin,"** at the Federation Conference held in Seattle. Gerry shares a personal "case study" and helps with how to follow clues to find where needed information may be found. He has taught the "beginning class" at the winter CCGS Clark College classes and also speaks about census records later in the series.

The Workshop is free. Lunch will be served for \$3.00. A **Question & Answer** period will allow you to ask about a problem you're facing in your research.

The PUD - Public Utilities District - Building is located across the street from the downtown Vancouver Library on Mill Plain near I-5.

KNAPP MORTUARY RECORDS

Extracted by CCGS member Gerry Gilman, the Knapp-Gunderson-Hamilton Funeral Home records were first printed in the *Trail Breakers* Winter 1989/Vol. 16 #2 issue. The history of the funeral home has been printed in the first volume of the Knapp Mortuary Funerals, the Hamilton Funeral Home Records, and the Hamilton Family history was printed in Vol. 20 No. 2 of the *Trail Breakers*. In 1960 the Knapp Mortuary merged with Mylan-Gunderson-Lanier and is presently under the Hamilton-Mylan-Knapp-Gunderson Funeral Home, located on the Corner of 11th and Columbia Streets in Vancouver, WA. Three volumes have now been printed: *Knapp Mortuary Funerals 1907-1925*, *Knapp Mortuary Funerals 1926-1940*, and *Hamilton Funeral Records 1927-1929*.

MEAD, GEORGE

b. 8/9/1907 Canada, d. 9/1/1942, age 35y 0m 23d, married to Wilhelmina Mead, George Mead Company Heating & Air Conditioning, Christian Science, lived at 2429 Roanoake St., Vancouver, Clark County, Washington - had lived in the State for 15 years 4 months, died at 2500 "E" St., Vancouver of TB attended by D. Marr Basaillon of Portland, funeral 9/4/1942 (Friday) 11 AM with Christian Science reader Mrs. Hammond, remains were cremated at the Portland Crematory.

Ordered by Mrs. Paul Shaw of 2429 Roanoake St., Vancouver. Charged to the George Mead Co. and Insurance. **Parents were George W. Mead and Victoria Rollins both born in Canada.**

LAMB, MINERVA ELLEN

b. 1/5/1848 Illinois, d. 9/9/1942, age 94y 8m 4d, widow of James O. Lamb, housewife, lived at Ridgefield, Clark County, Washington - had lived in the State for 13 years, died at 2309 Miller St., Vancouver, Clark County, Washington of heart failure attended by Dr. Lyle Hamm of Vancouver, funeral 9/11/1942 (Friday) 10 AM at Knapp Chapel with Reverend Walter Givens of Vancouver, remains were motored to McMinnville, Oregon, buried at the McMinnville [Masonic] Cemetery. Ordered by S. Ralph Lamb 6525 N. Boston Ave., Portland. Charged to S. Ralph Lamb and Washington State Old Age Fund. **Parents were John W. Golden and Elizabeth St. Clair both born in Kentucky.**

MORELOCK, HAROLD

[b. 2/11/1877,] d. 9/13/1942, Veteran of WWI, [widower to Rosa Morelock (12/25/1877-10/11/1937 has marker in Section C.)], no home address, died at the Veterans Hospital in Portland, Multnomah County, Oregon, no cause of death

listed, no doctor listed, funeral 9/17/1942 (Thursday) 2 PM at Knapp Chapel with F. & A.M. in charge, buried at Park Hill Cemetery Sec. C (has marker). Payment was refunded by Attorney Sprague, claim not filed in time. No names of his family. **Parents were not listed.**

PERDUE, BRYAN T.

b. 11/5/1870 Iowa, d. 9/11/1942, age 71y 10m 6d, married to Ella A. Perdue (1877-1947 has marker), farmer, lived at Brush Prairie, Clark County, Washington - had lived in the State for 50 years, died at St. Joseph's Hospital in Vancouver, Washington of coronary thrombosis attended by Dr. Frank Boersma of Vancouver, funeral 9/15/1942 (Tuesday) 2 PM at Knapp Chapel with Reverend Gordon Woodall of Brush Prairie, buried at Brush Prairie Cemetery (has marker). Ordered by family. Charged to H. Spieker, and wife Ella Perdue. **Parents were Charles W. Perdue born in Missouri and Ella Davis born in Oregon.**

MANSFIELD, SARAH ELIZABETH

b. 9/6/1872 Kansas, d. 9/15/1942, age 70y 0m 9d, married to Walter Clyde Mansfield (1874-1956 has marker in Sec D.), housewife, lived at 2901 St. Johns Blvd., Vancouver, Clark County, Washington - had lived in the State for 12 years, died at the Clark County General Hospital of cardiac failure attended by Dr. Jo Bennett Blair of Vancouver, funeral 9/18/1942 (Friday) 2 PM at Knapp Chapel with Reverend John Pressley of Vancouver, buried at Park Hill Cemetery Sec. D (has marker). Ordered by family. Charged to Mrs. Ruth C. Bagley Rt. #2 Box 514a Vancouver, Washington and Washington State Old Age Fund. **Parents wereBradley and Katurah Store born in Kansas.**

LELOFF, OTTO

b. 7/15/1884 Germany, d. 9/16/1942, age 58y 2m 1d, married to Emma S. Leloff (1886-1971 has marker in Sec. D), salesman for Pacific Coast Paper Mills, lived at 714 E. 20th St. Vancouver, Clark County, Washington - had lived in the State for 11 years, died at the St. Joseph's Hospital in Vancouver of a cerebral thrombosis attended by Dr. A.W. Armstrong of the Kiser Hospital, funeral 9/14/1942 (Saturday) 10 AM at Knapp Chapel with Reverend John Pressley of Vancouver, buried at Park Hill Cemetery Sec. D (has marker). Ordered by and charged to wife Emma Leloff. Parents were Julius Leloff and mother's name not listed both born in Germany.

WOOD, IDA B.

b. 10/1/1873 Wisconsin, d. 9/23/1942, age 68y 11m 23d, widow of Harry D. Wood (10/14/1860-7/1/1933 born in New York, his remains were cremated (?) ashes buried beside wife), housewife, lived with E.W. Wood at 604 W. 6th St., Vancouver, Clark County Washington - had lived in the State for 34 years, died at the Clark County General Hospital of arteriosclerosis attended by Dr. A.W. Stevenson of Vancouver and Dr. Clyde Hutt of Portland, funeral 10/1/1942 (Thursday) 2 PM at Knapp Chapel with Reverend W.B. Tait of Vancouver, buried at Park Hill Cemetery (no marker). Ordered by E.W. Wood. Charged to Washington State Old Age Fund. Parents wereEverett andDrew both born in the United States.

GUDMUNSON, ALTA ROSA

b. 12/18/1894 Nebraska, d. 9/23/1942, age 47y 9m 5d, married to Severin Gudmunson, housewife, lived at Rt. #2 Ridgefield, Clark County, Washington - had lived in the State for 2 years, died at St. Joseph's Hospital in Vancouver, Clark County, Washington of heart failure attended by Dr. D. Steffin of Ridgefield, remains shipped 9/24/1942 to Sedro Wooley, Washington for burial in a Sedro Wooley, Washington Cemetery. Ordered by and charged to husband Severin Gudmunson. Parents were Delbert Fosburg born in Pennsylvania and Malision Keapy [Malisia Heapy?] born in Canada.

WAGNER, SARAH JOSEPHINE

b. 10/8/1859 Ireland, d. 9/28/1942, age 82y 11m 20d, widow of Alonzo C. Wagner, housewife, lived with son Dr. A.C. Wagner at 404 W. 9th St., Vancouver, Clark County, Washington - had lived in the United States for 74 years and Clark County Washington for 21 years, died at the Clark County General Hospital of chronic myocarditis attended by Dr. Lieser of Vancouver, funeral 9/30/1942 (Wednesday) 2 PM at Knapp Chapel with Reverend Fred C. Taylor of Vancouver, buried at Lone Fir Cemetery in Portland, Oregon. Ordered by and charged to Dr. A.C. Wagner and

Washington State Old Age Fund. Parents were Thomas A. Shane and Hester Williams both born in Ireland.

THOMPSON, BESSIE WINONA

b. 7/18/1895 Washington, d. 9/28/1942, age 47y 2m 10d, married to Basil R. Thompson (1889-1965 buried at Park Hill Cemetery Sec. D.), housewife, lived at 1010 "V" St., Vancouver, Clark County, Washington - had lived in the State for 25 years, died at home of cancer of the right breast, no doctor listed, funeral 10/2/1942 (Friday) 2 PM at Knapp Chapel, no clergy listed, buried at Park Hill Cemetery (no marker). Ordered by and charged to husband Basil R. Thompson. Parents were M.K. Walker born in Oklahoma and Ellen J. Nichols born in Oregon.

HIRSCH, HENRY O.

b. 1866 Texas, d. 9/29/1942, age 76 years, single, farmer, lived at Battle Ground, Clark County, Washington - had lived in the State for 34 years, died at home of heart failure attended by Dr. R.W. Armstrong of Vancouver, funeral 10/3/1942 (Saturday) 1 PM at Knapp Chapel with Reverend Paul Kunzman of Vancouver, buried at Brush Prairie Cemetery (no marker -no record). Ordered by and charged to the Washington State Old Age Assistance. Parents were not named but born in Texas.

DUNBAR, CAROL MAE

b. 10/22/1941 Washington, d. 9/29 1942, age 1y 11m 7d, single, Child, lived at 301 W. 16th St., Vancouver, Clark County, Washington - had lived in the State for all her life, died at St. Joseph's Hospital of a tumor, attended by Dr. Skinner of Battle Ground, funeral 10/1/1942 (Thursday) at grave site with Reverend Stuart Goude of Vancouver, buried at Park Hill Cemetery (no marker). Another daughter Mary Dunbar (10/9/1946-10/10/1946 born in Washington- has no marker). Ordered by and charged to father Thomas Dunbar. Parents were Thomas Dunbar born in Washington and Leona Armstrong born in Iowa.

ECKHART, ROSE M.

b. 1/9/1865 Ohio, d. 10/1/1942, age 76y 9m 21d, widow of Thomas M. Eckhart, housewife, lived at 514 E. 18th St., Vancouver, Clark County, Washington - had lived in the State of Washington for 3 years, died at home of no cause listed, attended by Dr. Clyde Hutt of Vancouver, funeral 10/5/1942 (Monday) 1 PM at Knapp Chapel with Reverend Stuart Goude of Vancouver, remains were motored to Salem, Oregon, buried at the I.O.O.F. Cemetery in Salem, Oregon. Ordered by and charged to Ople Goforth of Wheatland, California. Parents were Fredrick Sauvain born in Switzerland and Elizabeth Grabar/Graber born in Ohio.

MASON, GEORGE R.

b. 6/9/1891 England, d. 10/2/1942, age 51y 3m 23d, married to Myrtle B. Mason, boilermaker for Keizer Ship Yards, lived at 4104 Main St., Vancouver, Clark County, Washington - had lived in the State for 4 years, died at St. Joseph's Hospital in Vancouver of chronic myocarditis attended by Dr. Frank Boersman of Vancouver, funeral 10/5/1942 (Monday) 10 AM at Knapp Chapel with Reverend Paul Kunzman of Vancouver, buried at Park Hill Cemetery D (has marker). Ordered by and charged to wife Myrtle Mason. Parents were Lary G. Mason and Elizabeth James both born in England.

McCOY, GEORGE

b. 1/13/1865 Wisconsin, d. 10/2/1942, age 77y 8m 19d, married to Elenore McCoy (1868-1949 has marker next to husband), lumberman, lived at 302 W. 13th St., Vancouver, Clark County, Washington - had lived in the State for 35 years, died at St. Joseph's Hospital in Vancouver, of a coronary thrombosis attended by Dr. Frank Boersman of Vancouver, funeral 10/6/1942 (Tuesday) 2 PM at Knapp Chapel with Reverend Stuart Goude, buried at Park Hill Cemetery D (has marker). Ordered by wife Elenore McCoy. Charged to Austin McCoy. Parents were **James McCoy and Margaret... both born in Ireland.**

STRODE, NELLIE

b. 2/11/1886 Pennsylvania, d. 10/4/1942, age 56y 7m 23d, married to Arthur Strode, housewife, lived at 2311 Grant St. Vancouver, Clark County, Washington - had lived in the State 34 years, died at the Clark County General Hospital of cancer of the right breast attended by Dr. Wiswall of Vancouver, funeral 10/7/1942 (Wednesday) 10:30 AM with an Eastern Star service, remains were cremated at Portland Crematorium. Ordered by and charged to husband Arthur Strode. Parents were **Anton Milliren and Matilda Horn both born in Pennsylvania.**

BUSSARD, CORA

b. 2/14/1866 Michigan, d. 10/5/1942, age 76y 7m 21d, married to Charles Bussard, housewife, lived at Rainier, Cowlitz County, Washington, died at 3334 "L" St., Vancouver, Clark County, Washington, no cause listed, attended by Dr. Lieser of Vancouver, remains were sent to Rainier for funeral 10/9/1942 (Friday) 2 PM with Reverend Carl Criston of Rainier, buried at a Rainier, Washington Cemetery. Ordered by the family. Charged to Insurance and B.B. Boyce of Pineville, Oregon. Parents were **William Nesbit and Stritie/Stretiro (?) Snowden born in Ireland.**

GRAY, VIRGINIA

b. 1865, d. 10/7/1942, age 77y, no details who she was, lived at Carson, Skamania County, Washington, died at Good

Samaritan Hospital in Portland, Multnomah County, Oregon, no cause listed, no doctor listed, Knapp embalmed the remains and Pearson & Sons Mortuary came for the body. Remains probably buried at Carson Cemetery. Parents were **not listed.**

WHEELER, JESSIE

b. 7/19/1868 Indiana, d. 10/19/1942, age 74y 3m 0d, widow of Lewis E. Wheeler (1864-1939 has marker in Section D), housewife, lived at 3500 "Z" St., Vancouver, Clark County, Washington - had lived in the State for 17 years, died at the Clark County General Hospital no cause listed attended by Dr. Lyle Hutt of Vancouver, funeral 10/22/1942 (Thursday) 2:30 PM at Knapp Chapel with Reverend Fred C. Taylor of Vancouver, buried at Park Hill Cemetery D (has marker). Ordered by and charged to Lewis Wheeler Jr. of Vancouver and the Washington State Old Age Fund. Parents were **John Beel born in the United States and Martha Piper born in Pennsylvania.**

BURLEY, SANFORD

b. 9/29/1879 Washington, d. 10/20/1942, age 63y 0m 25d, single, laborer, lived at Rt. #1 Battle Ground, Clark County - had lived in the State for 60 years, died at Battle Ground of heart failure, attended by Dr. W.D. Clark of Battle Ground, funeral 10/23/1942 (Friday) 1:30 PM at Knapp Chapel with Reverend C.C. James of Battle Ground, buried at Lewisville Cemetery (has marker). [Also buried in the same plot are: parents who share marker with daughters Drusilla (1881-1892) and Clara (1890-1892). Ordered by and charged to Mrs. Clarence Branhall R.#1 Box 9 Battle Ground. Another daughter was Mrs. R.J. Wilson of Riverside, Oregon.] Parents were **Thomas Burley (10/1/1845 -4/4/1921 born in [Secordtown], Canada. [Note: he had two sisters: Mrs. Ann Marsh of Alberta, Canada and Mrs. Mary Green of St. Louis, Missouri and a brother E. Burley of Alberta Canada] and Clara Jane Hartley [6/3/1854-6/9/1922] born in Iowa [daughter of William Hartley and Jane Montgomery buried at Lewisville Cemetery in Clark County, Washington.]**

HANNUM, ELSWORTH A.

b. 5/4/1861 Ohio, d. 10/29/1942, age 81y 5m 23d, married to Margaret Hannum (1871-1959 has marker in Section D), retired farmer, lived at 2613 Neals Lane, Vancouver, Clark County, Washington - had lived in the State for 11 years, died at St. Joseph's Hospital of a cerebral hemorrhage attended by Dr. Jo Bennett Blair of Vancouver, funeral 10/29/1942 (thursday) 2 PM at Knapp Chapel with Reverend Walter Givins of Vancouver, buried at Park Hill Cemetery D 4-3 (has marker). Ordered by and charged to wife Margaret Hannum. Parents were **Samuel Hannum born in Iowa and LyliaHannum born in Pennsylvania.**

JOLLEY, LESTER J.

b. 4/29/1899 Idaho, d. 10/31/1942, age 43y 6m 2d, married to Irma Jolley, electrician for Keiser Ship Yards, lived at Ogden Meadows, Clark County, Washington - had lived in the State for 3 months, died at the Keiser Hospital of pneumonia attended by Dr. R.W. Armstrong and Dr. Williams of Keiser Hospital, remains were shipped to Boise, Idaho for the funeral, buried at a Boise Idaho Cemetery. Ordered by and charged to wife Irma Jolley. Parents were Thomas Jolley born in Utah and Annie Lundgren born in Idaho.

TEALE, CHARLES GARDNER

b. 11/9/1887 California, d. 11/4/1942, age 54y 11m 25d, married to Helen M. Teale, farmer, lived at Battle Ground, Clark County, Washington - had lived in the State for 45 years, died at home of heart failure attended to by Dr. W.D. Clark of Battle Ground, funeral 11/6/1942 (Friday) 2 PM at Knapp Chapel with Reverend C.C. James of Battle Ground, buried at Park Hill Cemetery D 64-2 (has marker). Ordered by and charged to wife Helen M. Teale. Parents were Charles H. Teale (1839-1926) and Mary E. Parker (1848-1923) both born in Ohio and [both buried in Park Hill Cemetery Section A.]

WRIGHT, LUCILLE GRAW "LUCY L"

b. 4/17/1902 Nebraska, d. 11/5/1942, age 40y 6m 18d, married to Guy Wright, housewife, lived at 1215 Jefferson St., Vancouver, Clark County, Washington - had lived in the State for 5 years, died at home of cancer attended by Dr. John Harrison of Vancouver, funeral 11/7/1942 (Saturday) 9:30 AM at Knapp Chapel with Fred C. Taylor of Vancouver, buried at Park Hill Cemetery D (has marker). Ordered by and charged to husband Guy Wright. Parents were William Wait born in Wisconsin and Abbie Graw or Grew born in Nebraska.

OSWALD, NORA H.

b. 11/16/1875 Illinois, d. 11/12/1942, age 67y 11m 26d, married to Joseph Oswald, housewife, lived at 11228 NE Sandy Blvd., Portland, Multnomah County, Oregon - had lived in the State for 26 years, died at home of heart failure attended by Dr. C.C. Newcastle of Portland, funeral 11/16/1942 (Monday - her 68th birthday) 2 PM at Knapp Chapel with Reverend Paul Dickey of Portland, buried at Lincoln Memorial Columbine. Ordered by and charged to husband Joseph Oswald. Parents were James Adams born in Illinois and Mallie/Mollie? Hammond.

OLSON, PER MIKAL

b. 6/15/1860 Sweden, d. 11/13/1942, 82y 4m 28d, married to Ida Olson, farmer, lived at Battle Ground, Clark county, Washington - had lived in the State for 20 years, died at home, no cause listed, attended by Dr. Skinner of Battle

Ground, funeral 11/17/1942 (Tuesday) 2 PM at Knapp Chapel with Reverend Paul Kunzman of Vancouver, remains were cremated at Lincoln Memorial crematory. Charged to Peter Olson. Parents were Michael Olson and Anna both born in Sweden.

BUTTON, GEORGE M.

b. 1861 Michigan, d. 11/15/1942, age 81 years, widower of Mary Jane Button (1858-11/22/1930 born in Missouri died of diabetes) died in Walla Walla, Walla Walla County, Washington, influenza, no doctor listed, funeral 11/18/1942 at Knapp Chapel with Reverend Fred C. Taylor, buried at Park Hill Cemetery. Ordered by and charged to C.A. Button. Parents were not listed.

SCHNEIDER, ADOLPH G.

b. 9/16/1864 Germany, d. 11/20/1942, age 78y 1m 19d, single, farmer, lived at Rt. #4 Vancouver Clark County, Washington - had lived in the State for 47 years, died at home of myocarditis attended by Dr. A.W. Armstrong of Vancouver, funeral 11/24/1942 (Tuesday) 1 PM at Knapp Chapel with Reverend Paul Kunzman of Vancouver, buried at Park Hill Cemetery. Ordered by the family. Charged to Otto Kunze. Parents were Christian Schneider and mother was not listed both born in Germany.

MASON, WILLIAM H.

b. 1869 Massachusetts, d. 11/22/1942, age 73y, single, retired farmer, lived at 4310 Washington St., Vancouver, Clark County, Washington - had lived in the State for 20 years, died in a car on the way to the Clark County Hospital in Vancouver of heart failure attended by Dr. R.W. Armstrong of Vancouver, funeral 11/25/1942 (Wednesday) 1 PM at Knapp Chapel with Reverend John W. Pressley of Vancouver, buried at Park Hill Cemetery G 1-2 (no marker). Ordered by and charged to George A. Boston the State of Washington Old Age Fund assistance was filed 12/14/1942. Parents were not listed.

ROBINSON, WILLIAM F.

b. 1/8/1865 Illinois, d. 11/23/1942, age 77y 10m 15d, married [to Sarah Robinson], retired farmer, lived at 108 18th St., Vancouver, Clark County, Washington - had lived in the State for 7 years, died at 2309 Miller Ave., Vancouver, Washington of carcinoma of the prostate attended by Dr. Lieser of Vancouver, funeral 11/27/1942 (Friday) 1 PM at Knapp Chapel with Reverend Fred C. Taylor of Vancouver, buried at Sara Union Cemetery (has marker). Ordered by and charged to Mrs. R.E. Marshall of Oregon City and the State of Washington Old Age Assistance fund. Parents were John Robinson born in Illinois and mother was not listed.

BUNTING, MARGARET

b. 1857, d. 11/26/1942, age 85y, widow, retired, lived with Mrs. B. Lowe at 300 E. 25th St., Vancouver, Clark County, Washington, died at Steilacoom Hospital in Pierce County, Washington, no cause listed, no doctor listed, funeral 11/29/1942 (Sunday) 2:30 PM at Knapp Chapel with kChristian Science Reader LeRoy Weeks of Vancouver, remains were Cremated at Lincoln Memorial Crematory in Portland, Oregon. Ordered by and charged to Mrs. B. Lowe and the State of Washington Old Age Assistance Fund. Parents were not listed.

McKAY, FRED W.

b. 5/9/1859 New York, d. 11/26/1942, age 83y 4m 17d, married to Edith J. McKay (1873-1950 has marker), farmer, lived at Pleasant Valley, Clark County, Washington - had lived in the State for 55 years, died at the Clark County General Hospital of senility attended by Dr. Wiswall of Vancouver, funeral 11/28/1942 (Saturday) 12:30 PM at Knapp Chapel with Elder G.W. Pettit of Vancouver, buried at Manor/Wilson Bridge Cemetery (has marker). Ordered by and charged to wife Edith McKay. Parents were Thomas McKay born in the U.S.A. and Elizabeth Frank born in New York.

SMITH, NELLIE

b. 10/16/1858 New Hampshire, d. 11/28/1942, age 84y 1m 12d, widow of Jabez R. Smith, lived at 2609 Harney St., Vancouver, Clark County, Washington - had lived in the State for 19 years, died at home of unknown illness, -she was senile, attended to by the Clark County Corner of Vancouver, funeral 12/1/1942 (Tuesday) 2 PM at Knapp Chapel with Reverend John Pressley, remains were cremated at the Lincoln Memorial Crematory in Portland, Oregon Ashes shipped 12/7/1942 by Lincoln Memorial to Putlam Smith of Redwood Falls Minnesota. Ordered by and charged to Miss Alice Smith. Parents were Joseph Fellows and Edeline Smith both born in New Hampshire.

TAFT, ANNA JANE

b. 1874, d. 12/2/1942, age 68y, widow of George L. Taft (1861-8/22/1913 has marker next to wife), housewife, lived at Los Angeles, Los Angeles County, California, died in Los Angeles, California, no cause of death listed, no doctor listed, remains were shipped for funeral 12/10/1942 (Thursday) 2 PM at Knapp Chapel with Reverend John Pressley of Vancouver, buried at Sifton Cemetery B 13 151 7 (has marker). Ordered by and charged to George Taft. Parents were not listed.

VAN ATTA, WILLIS ADRIAN

b. 5/28/1885 Brush Prairie, Clark County, Washington, d. 12/9/1942 age 57y 6m 11d, married to Mabel [F. Teter Foster

(1886-1944) has marker in Section D], Superintendent of the Vancouver Water Department, lived at 517 W. 27th St., Vancouver, Clark County, Washington - had lived in the State all his life, died at St. Joseph Hospital in Vancouver, cause not listed attended by Dr. John Harrison of Vancouver, funeral 12/12/1942 (Saturday) 10:30 AM with Reverend W.M. Aldrich of Vancouver, buried at Park Hill Cemetery D 192-2 (has marker). Ordered by and charged to wife Mabel Van Atta and Mrs. Lambert. Parents were Eli C[yrus] Van Atta [12/8/1847-5/5/1915 Henderson County,] Illinois [son of Gearshum Van Atta - who was the son of James Van Atta and Elizabeth "Betsy" Hull- and Sarah Caroline Palmer - who was the daughter of William Palmer and Jane Gill. The Gearshum Van Atta family of 10 children crossed the Oregon Trail in 1854] Eli Cyrus Van Atta was 7 years old when he with his parents settled for eight years in Linn County, Oregon and then in 1862 the family came to Brush Prairie, Washington. Eli married [3/1/1874] Elmarine [Jane] Bowman [1/21/1853-11/18/1918 born in Jackson County,] Missouri [the daughter of Merritt H. Bowman (3/10/1827-7/20/1912 born in Sangamon County, Illinois - son of Hiram Bowman and Isabel Howlet - married Medora Williams who crossed the Oregon Trail in 1853 with her baby Elmarine Jane. After Eli Cyrus Van Atta died Elmarine lived with her son Willis Van Atta for 1 1/2 years before her death in 1918.]

BEALL, THOMAS ORVAL

b. 8/4/1894 Washington, d. 12/11/1942, age 48y 4m 7d, married to Ethel Beall (1895-11/3/1968 born in Nebraska died of a stroke - has marker in Section C), worked in the S. P. & S Shops in Vancouver, Christian Science, lived at Rt. #3 Vancouver, Clark County, Washington - had lived in the State 48 years, died at home of lobar pneumonia attended by Dr. Henry Wiswall of Vancouver, funeral 1/15/1942 (Tuesday) 2 PM at Knapp Chapel with reader Earl Hartman of Vancouver, buried at Park Hill Cemetery C (has marker). Ordered by family. Charged to son Oscar Beall (1914-9/13/1984 born in Felida, Washington died in Eugene, Oregon Evergreen Staples Funeral Home). Parents were O[scar] C[ewell] Beall [1861-7/16/1927, died of cancer] and Alda [E.] Dickson [1860-5/16/1951, died of a cerebral hemorrhage) both born in Iowa [and buried at Park Hill Cemetery.]

PROEBSTEL, ANDREW JACKSON

b. 2/26/1854 [Clark County], Washington, d. 12/16/1942, age 88y 9m 20d, widower of Minnie A[gnès] Nye (12/7/1858-12/18/1931 born in Clark County, Washington the daughter of John Wirt Nye and Cynthia Charity Switzler (later married Colonel Benjamin F. Shaw) buried at Vancouver City Cemetery all have markers; came to Oregon Territory in 1849), Andrew J. Proebstel was a retired farmer [and at one

time had an auto dealership, was baliff of the court, member of the Elks Club and St. Lukes Episcopal Church]. He lived at 2007 Broadway St., Vancouver, Clark County, Washington - had lived in the State for 88 years, died at 2309 Miller St., Vancouver, Clark County, Washington of a cerebral thrombosis attended by Dr. Frank Boersma of Vancouver, funeral 12/18/1942 (Friday) 2 PM at Knapp Chapel with Reverend Charles S. Mook of Vancouver, buried at Vancouver City Cemetery SW 171 Line 6. [Also buried in same plot is daughter Edna Proebstel (6/14/1889-5/28/1894)]. Ordered by and charged to daughter Mrs. Minnie A. (Frank) Wilcox and the State of Washington Old Age Assistant Fund. Parents were Jacob Proebstel [11/17/1817-4/21/1888 born in Berlin] Germany and Maragret Karogt [Margaretta Knogt 3/7/1818-12/28/1861] born in Germany. [They came to Washington Territory in 1852 both buried at Vancouver City Cemetery NW 67 live 10 (have markers).]

MYLER, MABLE A.

b. 11/4/1892 Kansas, d. 12/17/1942, age 50y 1m 13d, married to Alvin Myler, housewife, lived at Rt. #2 Vancouver, Clark County, Washington - had lived in the State for 17 years, died at St. Joseph's Hospital in Vancouver of meningitis attended by Dr. Turk of Vancouver, funeral 12/19/1942, (Saturday) 10 AM with Reverend Gordon Woodall of Vancouver, buried at Park Hill Cemetery Section D (has marker). Ordered by and charged to husband Alvin Myler. Parents were William Gamble born in Illinois and Lannie Wright born in Missouri.

JOHNSON, CHRISTINA

b. 3/13/1859 Sweden, d. 12/18/1942, age 83y 9m 5d, widow of Gustave Johnson, lived at 2120 Broadway Vancouver, Clark County, Washington - had lived in the State for 30 years, died at the Clark County General Hospital in Vancouver of pneumonia attended by Dr. C.C. Wilcox of Portland, funeral 12/21 1942 (Monday) 3 PM at Knapp Chapel with Reverend L.T. Weislzenkamp of Portland, buried at Portland Mausoleum in Portland, Oregon. Ordered by and charged to O.A. Johnson of Vancouver. Parents were Andrew Peterson and Elizabeth both born in Sweden.

TOWER, FRANKLIN W.

b.1/23/1896, d. 12/18/1942, age 46y 10m 5d, [widower of (1) Madeline Jean Parrock Tower (8/1/1898-8/11/1928 born in France daughter of Robert Parrock buried at Sara Union Cemetery has marker) and (2) Joy L. Tower (1901- 1941 (?) has marker at Sara Union Cemetery)], logger, lived at Deep River, Wahkiakum County, Washington - had lived in the state for 7 years, died at Deep River, Washington of a logging accident, no doctor listed, funeral 12/22/1942 (Tuesday) 2 PM at Knapp Chapel with services by the Washington

Masonic Lodge #4, buried at Sara Union Cemetery (has marker). Ordered by and charged to wife Joy Tower. Parents were not listed.

LEFSTAD, CHRISTIAN

b. 1873 Minnesota, d. 12/25/1942, age 69y, single, retired farmer, Lutheran, lived at Brush Prairie, Clark County, Washington - had lived in the State for 19 years, died at the Clark County General Hospital in Vancouver of appoplexy attended by Dr. W.D. Clark of Battle Ground, funeral 12/31/1942 (Thursday) 2 PM at the Brush Prairie Lutheran Church with Reverend O.P. Stavass of Vancouver, buried at Brush Prairie Lutheran Cemetery (has marker). Ordered by and charged to Martin Lefstad of Alvarado Minnesota. Parents were not listed.

KINGEN, JOHN WILSON

b. 2/18/1859 Iowa, d. 12/26/1942, age 83y 10m 8d, married to Ida R. Kingen (1864-1953) has marker in Section D, retired farmer, lived at Rt. #3 Vancouver, Clark County, Washington - had lived in the State for 41 years, died at the Clark County General Hospital no cause listed attended by Dr.T.E. Hockett of Vancouver, funeral 12/29/1942 (Tuesday) 1 PM at Knapp Chapel with Reverend Walter Givens of Vancouver, buried at Park Hill Cemetery D 195-5 (has marker). Ordered by family. Charged to Mrs. Custard. Parents were Kingen and Christina

AMERICAN/SCHLESWIG-HOLSTEIN HERITAGE SOCIETY

by (new CCGS member)
Donald D. Clausen

This Society was founded in 1989 by a group of dedicated people interested in promoting and preserving the heritage of Schleswig-Holstein, Germany. This is an area of Germany located on a peninsula that extends from Hamburg in the south to the Danish border in the north. It is bordered on the west by the North Sea and on the east by Kiel Bay. In the latter half of the 19th century, many inhabitants of this area migrated to the United States, settling in the state of Iowa, California, and Washington.

The society published a bimonthly newsletter that includes news from Schleswig-Holstein, articles on the different towns in the area, a page of Plattduitsch (the low German language) and a page of queries for members seeking information on their ancestors from the area.

They also sponsor cultural studies, conferences and other programs. Unfortunately, most of these take place in Iowa, making it difficult for those in our area to attend. Membership is \$12 - write A/S-HHS, P.O. Box 313, Davenport IA 52805-0313.

VANCOUVER REGISTER

The "VANCOUVER REGISTER" has been abstracted by CCGS member Pat Bauer from a microfilmed copy in the Fort Vancouver Library. Copies of the "Register" are held by the Clark County Historical Society. Some issue have become lost. Items of local interest for genealogists and historians have been copied. The [] following articles indicate the [page # / column #]. * * * indicates article contains additional information not included in the abstract.

(Continued from January 9, 1969)

We saw a stalk of oats at **JUDGE OLNEY's** farm on Young's River, where **COL. SPEDDEN** resides which measured 9 feet with head 35 inches in length. Young's River is in Clatsop County, Oregon.

[2/1]

SMALL-POX IN WASHINGTON TERRITORY.
- A young lady named **SHAW** is seriously ill with the small-pox at Rockland, opposite the Dalles. Having lately came from California, the supposition is that she brought the germs of the disease with her from there.

[2/1]

Pursuant to notice and adjournment, the Board of Managers of the Clark County Agricultural and Mechanical Society met at Brant's Hall at 1 o'clock, 28th ult., **LEWIS VAN VLEET**, Esq., occupying the Chair, and **JULIUS SUISTE**, Esq., acting as Secretary. * * *

The President presented the annual report of the Society, which was read, approved and ordered filed.

S. D. MAXON, Esq., Treasurer of the Society, presented his annual account * * *

[2/4]

We would call attention to **DR. C. G. CAPLES'** Ad. of Monticello. Dr. Caples studied with **DR. GILTNER** of Portland, one of the best physicians on this Coast. * * *

[2/4]

A WORD TO OUR READERS.

We are a little later than usual in publishing this week's issue, for which we crave the pardon of our patron. In explanation we would state the following facts: During our absence last week there appeared in the *Register* a very flattering notice of Hon. **L. HOLMES**, U. S. Atty., who is not on a political pilgrimage to Washington City. * * *

[2/1]

Homestead Notice.

To **THOMAS H. BAXTER**:

You are hereby notified that an affidavit has been filed in this office by **LEVI M. SALLEE**, alleging that the Homestead entry # 555, dated December 1st, 1865, made by you on the South half of the Northeast quarter, - the Southeast quarter of the Northwest quarter - and the Northeast of the Southwest quarter of Section No. 15 in Township No. 2 North of Range No. 3 East has been abandoned by you, and asking that the entry may be canceled.

You are further notified that Saturday the 13th day of February 1869, has been set apart for the hearing of said case and unless you appear at this office on that day, and show good cause to the contrary, the said entry will be reported to the General Land Office for cancellation.

J. M. FLETCHER

Register of the Land Office at Vancouver, W.T.
Dated January 7, 1969 [2/3]

LOCAL MATTERS.

The Amateur Dramatic Association having tendered Mr. **P. A'HERN** a complimentary benefit in conjunction with the Fire Department, and Messrs. **WINTLER, DAVIDSON** and **HAYDEN** having been appointed a Finance Committee, tickets can be procured at all the principal business places in the city. Mr. A'hern is one of our oldest and most respected residents and a member of the Fire Department. Citizens should show their appreciation by a rousing benefit and the Fire Department are requested to appear in uniform by their Acting Chief Engineer, **J. W. NICHOLS**. * * * [3/1]

INTENDS TO QUIT BUSINESS. - It will be seen by reference to his advertisement that our genial neighbor, and indulgent landlord, Mr. **MICHAEL WINTLER**, is going to wind up business with a view of engaging in a different pursuit. * * * [3/1]

LOST. - Lost of Christmas Eve, between the *Fannie Troup's* wharf and the Garrison, a large Wells Fargo & Co's. Express Envelope, containing papers of little or no value to anyone except the owner. The finder will be liberally rewarded by leaving the same at this office, or delivering to **Capt. B. T. BABBITT**, of the Ordnance Department. [3/1]

LOCAL MATTERS.

TEMPERANCE LECTURE. - Mr. **H. N. GEORGE**, Grand Worthy Chief Templar, of the Order of Good Templars for Oregon and Washington Territory, lectured at the M. E. Church, in this place, on Tuesday evening. * * * [3/1]

January 16, 1869

A man named **PINMER**, employed at Port Discovery mill, was drowned in the bay on Sunday, while attempting to get a duck, which he had shot, out of the water. He had a log to assist him, but it seems lost hold of it. [2/3]

DISSOLUTION.

The partnership heretofore existing between messrs Leonard & Paul is this day dissolved, by mutual consent.

H. W. LEONARD
J. W. PAUL

N B - The business will hereafter be carried on under the firm name of Leonard & Downing. All debts against the firm will be arranged by the undersigned.

H. H. LEONARD
R. W. DOWNING
[2/4]

DIED

In this city Jan 11, 1869, of consumption, **P. A'HERN**, aged 41 years. In Cllickitat Co., W.T., opposite Dalles City, Oregon, at the residence of her uncle, of small pox, **KATHERINE**, eldest daughter of **A. C. R. & F. SHAW** of Oakland, Ca, formerly of Portland, Oregon, aged 24 years 6 months of age. Oregon and California papers please copy. [2/4]

Local Matters.

DEATH OF AN OLD CITIZEN. - Mr. P. A'HERN, an old citizen of this town, died last Thursday, after a long and lingering illness. Mr. A'hern was one of our earliest settlers, having emigrated to this Territory over fifteen years ago. He was a native of Ireland, and after his discharge from the U.S. army, he engaged in business at Vancouver, until 1855, when he was elected County Auditor, which office he continued to hold until 1867. Mr. A'hern had an open and generous heart, and no man in the County could boast of a greater number of truer and better friends than he. In the discharge of his official duties he was ever courteous and accommodating especially to the poor. His death is generally regretted, and many are the tokens of respect that are shown to his memory. His funeral took place on Wednesday, under the auspices of Vancouver Fire Engine Co, No. 1, of which he was a respected member. His body was followed to the grave by the Fire Department and a large number of citizens. [3/1]

BENEFIT. - The benefit of **MRS. P. A'HERN** was a success. There was about \$390 in currency taken at the door, we should judge. The performance was exceedingly good for an amateur one, and often elicited rounds of applause. It would be invidious to mention names where all did so well. The crash of benches between the plays was not set down in the bills, and produced quite a temporary confusion, some "hollering" "Fire", *et cetera, ad infinitum*. Mr. P. H. FOX made a neat speech to the audience at the close of "The Irish Tutor," when with long, continued applause the performance closed. [3/1]

A man by the name of **McCLURE**, an old resident on Salmon Creek died Jan. 7th, 1869, at the farm of **J. F. SMITH**, Esq. on Willow Point, in this County,

of cholera disease. McClure chopped two cords of wood the day before his death. Over-eating was the cause of his death. If he had taken a dose of castor oil instead of laudanum which he took, he would doubtless be alive today. [3/1]

WHERE, O where is the printer's devil? In the article written by our late workmen, unfortunately one name was omitted, the name of **WASHBURN, JR.**, printer's devil. * * * [3/1]

The rumor that there is a case of small pox in town is without foundation. All should resort to vaccination. "An ounce of prevention is worth a pound of cure." **MISS SHAW**, reported in last week's issue sick, opposite the Dalles, is dead. [3/2]

IN MEMORIAM.

At a meeting of Vancouver Fire Engine Company, No. 1, held at the Engine house on Tuesday, Jan. 12, 1869, the following preamble and resolutions were adopted - to-wit:

Whereas, It has pledged the Maker and Ruler of all men to remove from our midst our late friend and associate, Mr. **PATRICK ALLEN** * * *

J. W. NICHOLS

G. W. DURGIN
CAPT. JAS. TURNBULL
[3/2]

PERSONAL. - The telegraphic districts of Washington Territory and British Columbia, have been consolidate, with **MR. LAMB**, of the latter district, as superintendent.

We had the pleasure of meeting **MR. LAMB** on board the *Fannie Troup*. We found him a very genial gentleman. He spoke very highly of **MR. HUBBS**, our telegraph operator, which we heartily endorse. [3/2]

REV. DR. McCARTY. - A letter, received by a gentleman of this town, states that the venerable Dr. McCarty, for a long time chaplain of this post, lately fell down stairs in a hotel in Washington City, and broke his leg. He is recovering. [3/2]

We are requested by **MR. MAULSBY**, School Superintendent, to say that he will make a distribution of the county school fund on the second Monday in February, 1869, and that Districts not having made their annual report by that time will lose their part of the fund. [3/2]

REV. W. H. STOV, Rector of Trinity Church, Portland, will officiate in St. Luke's Episcopal Church, in this place, next Sabbath, exchanging pulpits with **REV. MR. NICHOLSON.** [3/1]

HON. ALVAN FLANDERS and **HON. H. W. CORBETT** have our thanks for man favors received. [3/1]

We have received a bottle of **DR. J. W. MURRAY's** "Lung and Liver Balsam." We regard it as one of the best purifiers of the human system we know of. The Doctor has opened an office on Front Street in Portland, where the public can obtain his invaluable medicines. [3/1]

We learn that on Wednesday last, during the heavy gale, a small boat was capsized while on her way to Madison from Port Orchard. Two men were in her at the time and it was reported that one of them, **Mr. JAMES BROAD**, was drowned. [3/2]

At the meeting of the Educational Society of Olympia, it was motioned that **MR. GALE**, of the *Transcript*, revise **MURRAY's** Grammar. He would doubtless give it the *murray*. [3/2]

(advertisement)

D. C. COLEMAN**WM. A. DALY****COLEMAN & DALY,**

No. 13, Alder Street, Portland, Oregon

General Collecting and Business Agents,
Conveyancers, Accountants, Etc. Pensions,
Bounties, and all other Claims against Government
prosecuted. [3/2]

January 23, 1869

TRIP FROM ASTORIA TO CLATSOP PLAINS

We had determined to visit Clatsop ere we returned to Vancouver. There was a sloop running between the Plains and Astoria. Said sloop was commanded by **CAPT. RICHARD HOBSON**, a splendid sailor, and we determined to secure a passage on Dec. 22d, Forefathers' day. There were quite a number of other passengers, mostly residents of the Plains. Among them was **JUDGE COFFENBERRY**, an old settler.***

There was one passenger for Tillamook, **GEORGE W. MILLER**, the Postmaster of the place, and the leading business man of that fertile valley.

There are two hotels at Skipanon Landing, one kept by **MR. PEASE**, and the other by **MR. WIRT**. They both have the name of being excellent houses. The Summer House, kept by **MR. LATTA**, is some ten or fifteen miles from them. * * *

The houses were all on the road, and there was the Church, pointing with taper spire to Heaven, though

its pastor, the **REV. MR. THOMPSON**, had gone to a new field of labor in California. We passed on, getting to the house of Mr. **NATHAN M. KIMBALL** near nightfall. There we met our friend **MR. HANDLY**, of Lafayette, Oregon. He was teaching the youngsters of these healthy plains. * * *

After dinner, we rode down to Latta's Summer House. We crossed the brook, some swollen, and went on to Packard's house, where is a splendid view of the breakers. **MR. PACKARD** is building a saw mill about half a mile in the rear of his residence.

When we returned, we found some difficulty in crossing the stream, but by the kindly assistance of **MR. LATTA** we forded it in safety. We came on, during a light shower, to **MR. GEARHART**'s where we spent a pleasant evening in agreeable conversation, and came on at an early hour to **MR. PEASE**'s having formed the acquaintance of many excellent people and enlarged the circulation of the *Register*. * * * [1/6]

FROM WASHOUGAL. - DEP. SHERIFF BEALL came in from Washougal on Wednesday eve. He reports corner lots in the new city of Washougal as rating at a high figure. * * * **MR. SCHAE BEN** is out there attending to the interests of the P.S. & C.R. Railroad Co. The water front of the new city will extend ten miles down the river from Cape Horn. [3/2]

SLEEVE SUPPORTERS. - Powell's Patent Sleeve Supporter is one of the inventions Mr. **A.L. JOHNSON** has for sale. We acknowledge the receipt of three pairs, one for each of the printers and one for ourself. They are excellent inventions for the purpose for which they are invented - to keep the sleeve out of the way in occupations like painting or writing. [3/1]

On the 16th day of January, 1869, being the day for the regular meeting of the Clark County

Educational Association, the members met at the District School House, in Vancouver, W.T., at 1 o'clock, p.m., and was called to order by **S.W. BROWN**, Esq., the President.

Prayer having been offered by the **REV. C.G. BELKNAP**, the minutes of the previous were read and approved. * * *

The following persons were duly elected officers of this Association for the ensuing term, ending on the 3d Saturday in July next, to-wit: President, **S.W. BROWN**; Vice Presidents, **MRS. E.J. HINES**, **REV. C.G. BELKNAP**; Secretary, **JULIUS SUISTA**; Treasurer, **CLARK SMITH**; Librarian, **I.T. MAULSBY**. [3/1]

ARRAY. - Last week, on Friday evening, about 7 o'clock, at Bishop's Landing, on Cowlitz river, about 6 miles above Freeport, Mr. **JAMES BISHOP** was horribly cut with a knife by **AMBROSE PATTON** curing an altercation about the division of the products at some rented land. * * * Mr. Patton also cut **JAMES GEARY** quite severely. Mr. Patton is a Justice of the Peace. [3/2]

EXIT OF A THIEF. - Left here on the 15th inst., an Indian, **ANDREW**, by name, late in the employ of **MR. BROUILLETTE**. When he left he stole a boat belonging to **MICHAEL SHEA**. The week preceding his exit he was in the employ of **J. SUISTE**, Esq. It is supposed that he has gone to the Cowlitz river, as he belonged to the Cowlitz band of Indians. He belongs, without doubt, to a band of horse thieves in the Upper County.

HOLY ANGELS' COLLEGE. - The **REV. P. MANS** informs us that the 2d quarter of studies has just terminated by a written examination in all the branches of the literary course pursued in this institution. * * * [3/2]

PERSONAL. - **MAJ. R.F. Fitzgerald** and family are stopping in town. The Major, he informs us, served in the 9th Army Corps. [3/2]

IN BUSINESS. - We call attention to **C. HAACK's** place of business, corner of Stark and Second streets, Portland. Mr. Haack was late leader of the Department Band, and has many friends as well in Vancouver as Portland. [3/1]

POSTPONED. - The adjourned sale of lots of the **SHORT** estate is still deferred till Monday next on account of the funeral of Mr. **GIDEON MILLARD** who died on Thursday morning last, and is today buried by the Masons. [3/2]

MR. PENNOVER, editor of the Oregon Herald, is like a doll-baby whose head is filled with sawdust, dead issues and "sich." [3/2]

FROM ST. HELENS. - **DR. KINSEY**, of St. Helens, called at our office. The Doctor is a good physician and has a large practice in Columbia County. [3/2]

TEMPERANCE ORATION. - **HON. J.F. CAPLES** delivered a fine Temperance oration, on Jan. 13, 1869, at St. Helens, Oregon. There was a large audience to hear him. [3/2]

L.W. FELTON, agent and correspondent of the San Francisco *Times*, is in the city. The *Times* is a live paper, and very interesting.

January 30, 1869

INTERNAL REVENUE. - **DR. BAILEY**, the supervising Inspector of Internal Revenue on the Northern Pacific Coast, was in town during the past week to look after the interests of Uncle Sam generally, so far as connected with the Revenue Department. * * * [3/1]

NEW DISCOVERY. - **MR. LANCASTER**, of this city, has brought to our office a piece of quartz, found fourteen miles from here near Lewis River. We are not much of a judge of such things, but silver appears discernible to the naked eye, and a magnifying glass discloses particles of gold. * * * [3/1]

PERSONAL. - While we were in Portland the other day, Mr. **H.C. SHOREY**, telegraph operator at Monticello, visited our city. Mr. S. is a gentleman and a scholar. May he live a thousand years!

DR. J.R. BAILEY, Supervisor of Internal Revenue, is in the city. His district comprises Oregon, Washington and Idaho and Montana Territories. His residence is in Corvallis, Oregon. He represents that city as progressing in improvements. The Dr. is a very pleasant gentleman. He came from the States at the same time we did. He, however, had only been on a visit to his old home in Ohio, having been for a long time a resident of this coast. [3/1]

LOST. - We are informed that **MR. STONE**, of Lewis River, lost about \$50 last Monday. He had stopped over night at **MR. GANDER's** and went down to get change to pay for his night's lodging. By some inadvertence he dropped his purse. It comes very hard on **MR. STONE**. He had been teaching school to obtain it and calculated with to ^[3/2]so buy his supplies for the winter. He is said to be a very worthy gentleman. [3/1]



Ancestor Charts

Ancestor Chart of Maureen Olivia (McCARTHY) WILSON

4403 Idaho St., Vancouver, WA 98661

1. **MCCARTHY**, Maureen Olivia; b 18 Jul 1935 Hood River, OR; m Paul Lawrence **WILSON**, 10 Jun 1957 Las Vegas, NV.
2. **MCCARTHY**, James Lawrence; b 07 Nov 1910 Holdrege, NE; m 04 Sep 1934 Goldendale, WA; d 06 Oct 1989 Lake Montezuma, AZ.
3. **HANSEN**, Ella "Dene" Martha; b 18 Jan 1912 Gladiola (near Motley), MN.
4. **MCCARTHY**, John Bernard; b 12 Sep 1869 N. Lewisburg, OH; m 1904/1906?, CO/NE?; d 10 Mar 1942 Los Angeles, CA.
5. **ANDERSON**, Jessica Lee; b 17 Jan 1881 Clayton, IL; d 16 Oct 1919 San Diego, CA.
6. **HANSEN**, George Granstok?; b 22 Feb 1863 Christiania, NOR; m 25 Nov 1897 Fostoria, IA; d 28 Jun 1920 Wyndmere, ND.
7. **NASH**, Martha Prudence; b 18 Oct 1875 Norwood, IA; d 31 Dec 1959 Oxnard, CA.
8. **MCCARTHY**, John; b 08 Mar or Nov 1835 Cork or Tallagh, IRE; m 1855-1860 IRE or WLS; d 09 Jan 1913 McCook, NE.
9. **MCCARTY**, Ellen; b 1836/38? Waterford?, IRE; d 24 Sep 1896 Eckley or Wray, CO.
10. **ANDERSON**, Newton H., b 1859? IL; m 1879/80? Adams Co., IL.
11. **PILE**, Leann J.; b 1857/58? IL.
12. **HANSEN**, Jorgen; b 19 Mar 1829 Sande, NOR; m 27 Dec 1854 Oslo, NOR; d 11 May 1902 Fostoria, IA.
13. **HANSEN**, Trine F., b 08 Apr 1830 Drammen, NOR; d 17 Mar 1902 Fostoria, IA.
14. **NASH**, Elijah; b 14 May 1817 NY; m 21 Nov 1849 Peoria Co., IL; d 17 Jan 1886 Ruthven, IA.
15. **DANIELS**, Margaret J.; b 10 Dec 1832/1833 Yonkers?, NY; d 12 Mar 1902; Montevideo, MN.
16. **MCCARTHY**, Timothy?
17. **TOBIN**, Johanna or Katherine.

18. **MCCARTY**, Flur.
19. **HALEY**, Mary.
20. **ANDERSON**, Jossah/Joseph; b KY or TN.
21. _____, Rebecca?; b OH.
22. **PYLE**, Daniel; b IN?.
24. **OLSEN**, Hans,
25. **JÖRGINE**, Maren (**JÖRGENSEN**).
26. **NIELSON**, Hans.
27. **FREDERICKS**, Marthe Karine.
28. **NASH**, Asa; b 1791 MA.
29. _____, Phebe or Nancy; b 1788? D 1850-1855? Peoria Co., IL. Or IA.
30. **DANIELS**, John; b 1797 NH; d 1868 IA.
31. _____, Jennett C., b 1804 NY; d 1862 IA.

Ancestor Chart of Hazel P.(PALMQUIST) KETTERLING

2613 NE Whitman Av, Vancouver, WA
98662-7163

1. **PALMQUIST**, Hazel Marie; b 05Sep 1921 Gresham, OR; m1 Earl **HANSON** 07 Feb 1938 Stevenson, WA; m2 Leslie **KETTERLING**.
2. **PALMQUIST**, Fredrick Earnest; b 10 Aug 1884 Portland, OR; m 26 Dec 1910 Salem, OR; d 30 May 1961 Gresham, OR.
3. **COLLINS**, Margaret Malinda; b 20 Nov 1886 Evart MI; d 14 Apr 1964 Gresham, OR.
4. **PALMQUIST**, John August; b 23 Sep 1860 Kalamar Län, SWE; m 12 Nov 1883 Gresham, OR; d 21 Jan 1925 Gresham, OR.
5. **WILSON**, Eliza Mildred; b 14 May 1861 Powell Valley, Multnomuth Co., OR; d 12 Jan 1946 Gresham, OR.
6. **COLLINS**, Patrick; b 1852 Collinswood, ONT; m 18 Nov 1873 Flos. Tws., ONT; d 01 Jul 1928 Gresham, OR.
7. **MCMANUS**, Catherine Jane; b 1853/1856? CAN; d 1913 Gresham, OR.

8. **PALMQUIST**, Nils Fredrick; b 26 Apr 1835 Rumskulla Parish, SWE; m SWE; d 1899 Gresham, OR.
9. **JOHNSON**, Sophia L.; b 15/17 Aug 1832 SWE; d 27 Dec 1903 Gresham, OR.
10. **WILSON**, John Patrick; b 21 Apr 1822 Madison Co., KY; m 01 Oct 1840 Fulton Co., IL; d 13 Jul 1909 Gresham, OR.
11. **STAGNER**, Sarah Ann; b 22 Dec 1818 NC; d 06 Feb 1894 Gresham, OR.
12. **COLLINS**, Maurice; b 29 Feb 1816 IRE; m 1845/46; d 29 Sep 1901 Evart, MI.
13. **MCCARTY**, Abigail Cassey; b 31 Jul 1824 Near Tralee, IRE; d 12 May 1811 Evart, MI.
14. **MCMANNUS**, John.
15. **ROONEY**, Mary Ann.
16. **JONSSON**, Anders.
17. **ANDERSDOTTER**, Lisa Cath.
18. **JOHNSON**, J.
20. **WILSON**, John Simeon.
21. **LYNN**, Nancy.
22. **STAGNER**, Henry.
24. **COLLINS**, Patrick.

Ancestor Chart of
Florence Luetta (RICHARDS)
MARTOCELLO

2808 NW 112th St., Vancouver, WA 98685

1. **RICHARDS**, Florence Luetta; b 03 Oct 1935 Vancouver, WA; m John Anthony **MARTOCELLO** 20 Feb 1958 Aviano, IT.
2. **RICHARDS**, Dempsey William; b 08 Apr 1912 Ellsworth, WA; m 30 Aug 1934 Vancouver, WA; d 23 Mar 1990 Minot, ND.
3. **SKOV**, Eileen F.; b 07 Sep 1917 Bjornson Twp, ND; d 14 Sep 1985 Vancouver, WA.
4. **RICHARDS**, Dempsey Arthur; b 30 Sep 1886 Freemont, WY; m 14 Oct 1908 Vancouver, WA; d 22 Oct 1951 Vancouver, WA.
5. **SLAWSON**, Ethel Ellen; b 03 Jul 1882 Sylvan, OR; d 20 Oct 1968 Vancouver, WA.
6. **SKOV**, James Martin; b 15 May 1881 DEN; m 17 Sep 1916 Norwich, ND; d 29 Jan 1960 Vancouver, WA.
7. **REILLY**, Lucile F.; b 13 Apr 1899 Sheldon, IA; d 31 Mar 1969 Vancouver, WA.
8. **RICHARDS**, Samuel S.; b 30 Oct 1845 WLS; m 26 Dec 1883 Eldorado, KS; d 11 Aug 1928 American Lake, WA.

9. **TAYLOR**, Almedia E.; b 13 Sep 1867 Concordia, KS; d 10 Feb 1909 Vancouver, WA.
10. **SLAWSON**, William Walter; b 25 Feb 1861 Fond Du Lac, WI; d 19 Mar 1933 Vancouver, WA.
11. **MORRIS**, Luetta Matilda; b 14 May 1874 Sublimity, OR; d 18 Feb 1944 Vancouver, WA.
12. **SKOV**, Jens Rasmussen; b 18 Dec 1847 DEN; d 04 May 1915 DEN.
13. **MADSEN**, Larsine V.; b 29 Dec 1850 DEN; d 26 Oct 1908 DEN.
14. **REILLY**, Joseph Sylvester; b 03 Jun 1874 IA; m 14 Dec 1898 Algona, IA; d 09 Jan 1945 Vancouver, WA.
15. **NEWCOMB**, Lulu Grace; b 03 Apr 1876 Ft. Dodge, IA; d 25 May 1958 Vancouver, WA.
16. **RICHARDS**, John.
18. **TAYLOR**, Dempsey.
19. **JOHNSON**, Louyne.
22. **MORRIS**, Philemon D.
23. **TARPLEY**, Sarah Ellen.
24. **SKOV**, Rasmus Pedersen.
25. **MORTENSDATTER**, Johanne.
26. **MADSEN**, Carl Christian.
27. **SMITH**, Ellen Johanne.
28. **REILLY**, James.
29. **CULLEN**, Margaret.
30. **NEWCOMB**, Seth Clair.
31. **VERDENBERG**, Cornelia.

Ancestor Chart of
Harry M. Howarth

PO Box 222; Ridgefield, WA 98642-0222

1. **HOWARTH**, Harry Merton.
2. **HOWARTH**, Merton Fred; b 18 Aug 1883 Durand Twp, IL; d 16 May 1972 Rockford, IL; m 03 Aug 1922 Rockford, IL.
3. **DOTY**, Beth Merna; b 05 Aug 1892 Pecatonica, IL; d 12 May 1972 Rockford, IL; m 03 Aug 1922 Rockford, IL.
4. **HOWARTH**, Henry Edwin; b 07 Jan 1856 Pecatonica Twp, IL; d 10 Sep 1937 Pecatonica, IL; m 03 Jul 1881 Durand, Winnebago, IL.
5. **HAUGHTON**, Altha Isabelle; b 30 May 1860 Durand Twp, IL; d 03 Apr 1940 Pecatonica, IL; m 03 Jul 1881 Durand, Winnebago, IL.
6. **DOTY**, Clarence Devillor; b 09 Feb 1862 Pecatonica, IL; d 10 Nov 1925 Ridott Twp, IL; m 24 Aug 1887 Pecatonica, IL.

7. **SLOAN**, Margaret Jane; b 03 Sep 1860 Buffalo, Erie, NY; d 17 Oct 1944 Pecatonica, IL; m 24 Aug 1887 Pecatonica, IL.
8. **HOWARTH**, John; b 15 Mar 1833 Manchester, ENG; d 05 Feb 1870 Pecatonica Twp, IL; m 21 Feb 1855 Durand Twp, IL.
9. **HILL**, Hannah; b 13 May 1833 Manchester, ENG; d 08 Feb 1911 Beloit, Rock, WI; m 21 Feb 1855 Durand Twp, IL.
10. **HAUGHTON**, Aaron Jr; b 08 Sep 1834 Newton Moor, ENG; d 03 May 1909 Pecatonica Twp, IL; m 25 Feb 1858 Winnebago, IL.
11. **SARVER**, Maria Ann; b 01 May 1840 Bradford, PA; d 13 Sep 1929 Fairfield, IA; m 25 Feb 1858 Winnebago, IL.
12. **DOTY**, Martin; b 30 Jan 1838 Parkman, Geauga, OH; d 14 Apr 1915 Pecatonica, IL; m 11 Nov 1858 What Cheer, Keokuk, IA.
13. **EATON**, Helen Ophelia; b 06 Jun 1836 Nelson, Portage, OH; d 05 Nov 1918 Pecatonica, IL; m 11 Nov 1858 What Cheer, Keokuk, IA.
14. **SLOAN**, Thomas; b 10 Mar 1827 Tawnybroke, Northern; d 24 Sep 1878 Ridott Twp, IL; m 29 Oct 1856 Buffalo, Erie, NY.
15. **SCOTT**, Martha L; b 23 Mar 1835 Whitestown, Oneida, NY; d 02 May 1887 Pecatonica, IL; m 29 Oct 1856 Buffalo, Erie, NY.
16. **HOWARTH**, John; b abt 1788 ENG; d bef 1852 ENG; m 07 Jun 1828 St. Michael, ENG.
17. **REDFERN**, Maria; b abt 1808 ENG; m 07 Jun 1828 St. Michael, ENG.
18. **HILL**, Henry; b Sep 1803 Hope, Derbyshire, ENG; d 14 Nov 1884 Carlton, Victoria, AUL; m 05 Jun 1826 Manchester, ENG.
19. **SUTTON**, Hannah; b 16 Mar 1800 ENG; d 02 Mar 1879 Carlton, Victoria, AUL; m 05 Jun 1826 Manchester, ENG.
20. **HAUGHTON**, Aaron Sr; b 23 Apr 1812 Cheshire, ENG; d 29 Dec 1887 Durand Twp, IL; m bef 1832 Stockport, ENG.
21. **DERWENT**, Harriet; b 15 Sep 1811 Hope, Derbyshire, ENG; d 12 Feb 1844 Durand Twp, IL; m bef 1832 Stockport, ENG.
22. **SARVER**, Samuel; b 06 Nov 1811 Washington, MD; d 11 Aug 1874 Winnebago, IL; m 16 Mar 1836 PA.
23. **BALDOSER**, Lydia; b 10 Jul 1819 Broad Top, Bedford, PA; d 17 Feb 1899 Durand Twp, IL; m 16 Mar 1836 PA.
24. **DOTY**, Ezra; b 17 Dec 1795 Williamstown, MA; d 10 Jul 1854 Parkman, Geauga, OH; m 21 Dec 1831 Parkman, Geauga, OH.
25. **FULLER**, Edna; b 08 Aug 1811 NY; d 22 Jan 1892 What Cheer, Keokuk, IA; m 21 Dec 1831 Parkman, Geauga, OH.
26. **EATON**, Jesse; b 07 Sep 1802 NY; d 17 Sep 1871 Pecatonica, IL; m bef 1830 NY.
27. **LOCKE**, Elizabeth Betsey; b Jun 1800 Enfield, Hartford, CT; d Apr 1888 Pecatonica, IL; m bef 1830 NY.
28. **SLOAN**, John; b abt 1788 Antrim, No. Ireland; d 24 Sep 1853 Tawnybrack, No. Ireland; m abt 1810 Antrim, No. Ireland.
29. **BARON**, Sarah; b aft 1790 Antrim, No. Ireland; d 11 May 1848 Tawnybrack, No. Ireland; m abt 1810 Antrim, No. Ireland.
30. **SCOTT**, Thomas; b 16 Mar 1796 No. Ireland; d 24 Aug 1870 Pecatonica, IL; m bef 1820 Oneida, NY.
31. _____, Martha L; b 20 Apr 1792; d 22 Jun 1886 Pecatonica, IL; m bef 1820 Oneida, NY.
36. **HILL**, Hugh; b 1781 Bradwall, ENG; d 05 Oct 1850 Manchester, ENG; m 02 Dec 1802 Hope, Derbyshire, ENG.
37. **DERWENT**, Mary; b 1779 Thornhill, ENG; d 13 Oct 1814 Bradwall, ENG; m 02 Dec 1802 Hope, Derbyshire, ENG.
38. **SUTTON**, Benjamin; d ENG; m 03 Jan 1796 Sheffield, ENG.
39. **MORTON**, Martha; d ENG; m 03 Jan 1796 Sheffield, ENG.
40. **HAUGHTON**, Samuel; b abt 1784 Cheshire, ENG; d 30 Mar 1846 Newton, Cheshire, ENG; m 15 Dec 1805 Stockport, ENG.
41. **BEAUMONT**, Mary; b Holmfirth, ENG; d bef 1841 Cheshire, ENG; m 15 Dec 1805 Stockport, ENG.
42. **DERWENT**, Thomas; b 09 Feb 1781 Thornhill, ENG; d 14 Nov 1847 Durand Twp, IL; m 15 Nov 1804 Hope, Derbyshire, ENG.
43. **BRADWALL**, Hannah; b Bradwall, ENG; d 11 Aug 1875 Seward Twp, IL; m 15 Nov 1804 Hope, Derbyshire, ENG.
44. **SARVER**, Jonathan Marialie; b abt 1776 ?bedford, PA; d 1847 Harrison Twp, IL; m abt 1795 PA.
45. **STREIT**, Maria Ann; b 11 May 1778 Conowego, Dauphin, PA; d 22 Feb 1864 Fulton, PA; m abt 1795 PA.
46. **BALDOSER**, Daniel; b 05 Apr 1785 PA; d 11 Sep 1841 Junction City, OH; m PA.
47. _____, Catharine; b 09 Oct 1790 PA; d 04 Sep 1840 Junction City, OH; m PA.
48. **DOTY**, Asa; b 09 Sep 1765 Hardwick, MA; d 25 Jan 1843 Parkman, Geauga Co, OH; m 11 Sep 1791 Nantucket, MA.

49. **COFFIN**, Lurania; b 18 Aug 1771 Nantucket, MA; d 13 Oct 1844 Cleveland, OH; m 11 Sep 1791 Nantucket, MA.
50. **FULLER**, Emmons; b 1780/1784 ?Plainfield, MA; d abt 1840 Avon Twp, Lorain, OH.
51. **KILLEY**, Beulah; b 1784/1790; d abt 1831 Orleans County, NY.
52. **EATON**, ?Frazier; b 23 Jan 1780 Goffstown, NH; d Rushford, Allegany, NY; m 16 Sep 1799 Wethersfield, VT.
53. **BLAKESLEE**, Lucinda; b 1780; d 1861 Rushford, Allegany, NY; m 16 Sep 1799 Wethersfield, VT.
54. **LOCKE**, Ayres; b 1763 Shutesbury, MA; d 27 Mar 1839 Nelson, Portage, OH; m 01 Sep 1794 East Windsor, CT.
55. **BLODGETT**, Lydia; b Sep 1774 East Windsor, CT; d Jun 1850 Walworth, WI; m 01 Sep 1794 East Windsor, CT.
56. **SLOAN**, ?James; b abt 1750 Northern Ireland; d Northern Ireland; m Northern Ireland.
57. **MCBURNEY**, Jennet; b abt 1750 Northern Ireland; d Northern Ireland; m Northern Ireland.
60. **SCOTT**, Andrew; b bef 1780 Northern Ireland; d bef 1850 NY; m bef 1820 Northern Ireland.
61. _____, Sarah; b bef 1780 Northern Ireland; d aft 1840 NY; m bef 1820 Northern Ireland.
72. **HILL**, Henry; b Berestall, ENG; d 15 Mar 1791 Bradwall, ENG; m 01 Jan 1781 Hope, Derbyshire, ENG.
73. **MIDDLETON**, Ann (Bradwall); b Derbyshire, ENG; d 19 Apr 1829 Bradwall, ENG; m 01 Jan 1781 Hope, Derbyshire, ENG.
74. **DARWENT**, Edmund; b 1745 Thornhill, ENG; d 20 Jul 1784 Thornhill, ENG; m 30 Nov 1775 Hope, Derbyshire, ENG.
75. **FOX**, Rachel; b Smalldale, ENG; d 21 May 1825 Thornhill, ENG; m 30 Nov 1775 Hope, Derbyshire, ENG.
76. **SUTTON**, Joseph; d ENG; m 23 Nov 1752 Sheffield, ENG.
77. **REMINGTON**, Mary; d ENG; m 23 Nov 1752 Sheffield, ENG.
78. **MORTON**, Edward; d ENG; m 01 Jul 1762 Ecclesfield, ENG.
79. **CROWDER**, Elizabeth; d ENG; m 01 Jul 1762 Ecclesfield, ENG.
80. **HAUGHTON**, Aaron; b Cheshire, ENG; d 1842 ENG; m 26 Feb 1781 Stockport, ENG.
81. **WILLIAMSON**, Unies; b abt 1760 ENG; d ENG; m 26 Feb 1781 Stockport, ENG.
82. **BEAUMONT**, Abram; b Almondbury, ENG; m 12 Apr 1773 Yorkshire, ENG.
83. **CORKER**, Mary; b Sheffield, ENG; d ENG; m 12 Apr 1773 Yorkshire, ENG.
84. **DARWENT**, Edmund; b 1745 Thornhill, ENG; d 20 Jul 1784 Thornhill, ENG; m 30 Nov 1775 Hope, Derbyshire, ENG.
85. **FOX**, Rachel; b Smalldale, ENG; d 21 May 1825 Thornhill, ENG; m 30 Nov 1775 Hope, Derbyshire, ENG.
86. **BRADWALL**, John; b Smalldale, ENG; d ENG; m 08 Jul 1783 Hope, Derbyshire, ENG.
87. **DICKENS**, Ellen; b Tideswell, ENG; d 16 May 1844 Bradwall, ENG; m 08 Jul 1783 Hope, Derbyshire, ENG.
90. **STREIT**, Christian; b 1750 NJ; d 18 Sep 1823 Conowego Twp, PA; m 1773.
91. **MYERS**, Mary M; d bef 1788; m 1773.
96. **DOTY**, Zurishaddai; b 19 Nov 1731 Rochester, MA; d 1793 Wilmington, VT; m 04 Dec 1755 Hardwick, MA.
97. **WARNER**, Mary; b 23 Feb 1737 Hardwick, MA; d 27 Oct 1810 Bennington, VT; m 04 Dec 1755 Hardwick, MA.
98. **COFFIN**, Charles; b 08 Oct 1742 Nantucket Is., MA; m 10 Sep 1768 Nantucket Is, MA.
99. **COLEMAN**, Dinah; b Nantucket Is., MA; d 27 Aug 1775 Nantucket Is., MA; m 10 Sep 1768 Nantucket Is, MA.
100. **FULLER**, John; b 23 Sep 1762 East Haddam, CT; d 1826 NY; m 31 May 1784 Chesterfield, MA.
101. **STOCKWELL**, Lydia; b 22 Jan 1762 Oxford, Worcester, MA; d aft 1825 NY; m 31 May 1784 Chesterfield, MA.
102. **KILLEY**, Isaac Jr.; b abt 1763 ?Adams, MA; d MA; m MA.
103. **ALDRICH**, Beulah; b 14 Jun 1758 Uxbridge, MA; d MA; m MA.
108. **LOCKE**, Joseph; b 23 Apr 1729 MA; m May 1754 MA.
109. **AYRES**, Mary; b 22 Dec 1731 Brookfield, MA; d 29 Mar 1806 Shelburne, MA; m May 1754 MA.
110. **BLODGETT**, Roswell; b 08 Oct 1749 Windsor, Hartford, CT; d 28 May 1781 East Windsor, CT; m 1770 Hartford, CT.
111. **BARTLETT**, Hannah; b 1746; d 1813 Hartford, CT; m 1770 Hartford, CT.
144. **HILL**, Hugh; b Bradwall, ENG; d 30 Sep 1767 Bradwall, ENG; m 11 Jan 1738 Peak Forest, ENG.
145. **CLAYTON**, Sarah; d Apr 1807 Derbyshire, ENG; m 11 Jan 1738 Peak Forest, ENG.

146. **BRADWALL**, John; b New Wall Nook, ENG; d Derbyshire, ENG; m 02 Jul 1744 Hope, Derbyshire, ENG.
147. **FOX**, Mary; b Smalldale, ENG; d Derbyshire, ENG; m 02 Jul 1744 Hope, Derbyshire, ENG.
148. **DARWENT**, William; b Thornhill, ENG; d Thornhill, ENG; m 14 May 1741 Peak Forest, ENG.
149. **WILSON**, Mary; b Thornhill, ENG; d Dec 1808 Thornhill, ENG; m 14 May 1741 Peak Forest, ENG.
150. **FOX**, Thomas; b Smalldale, ENG; d Woodlands, ENG; m 30 Apr 1751 Hope, Derbyshire, ENG.
151. **CHEETHAM**, Mary; b Bradwall, ENG; d Apr 1806 Bradwall, ENG; m 30 Apr 1751 Hope, Derbyshire, ENG.
152. **SUTTON**, John; m 02 Jul 1712 Sheffield, ENG.
153. **WEATHRILL**, Elinor; m 02 Jul 1712 Sheffield, ENG.
154. **REMINGTON**, William; m 15 Dec 1722 Sheffield, ENG.
155. **DRIVER**, Anne; m 15 Dec 1722 Sheffield, ENG.
156. **MORTON**, Joseph; d ENG; m 11 Apr 1737 Ecclesfield, ENG.
157. **ELLIOT**, Mary; m 11 Apr 1737 Ecclesfield, ENG.
158. **CROWDER**, ?William.
160. **HAUGHTON**, John; b 1718 Cheshire, ENG; d 1804 Cheshire, ENG.
164. **BEAUMONT**, Abraham; b Sheffield, ENG; d Yorkshire, ENG; m 1754 Sheffield, ENG.
165. **Longbottom**, ?Ann; m 1754 Sheffield, ENG.
166. **CORKER**, Joseph; b Sheffield, ENG; d Yorkshire, ENG; m 08 May 1745 Sheffield, ENG.
167. **BLYTHE**, Lidia; b Sheffield, ENG; d Yorkshire, ENG; m 08 May 1745 Sheffield, ENG.
168. **DARWENT**, William; b Thornhill, ENG; d Thornhill, ENG; m 14 May 1741 Peak Forest, ENG.
169. **WILSON**, Mary; b Thornhill, ENG; d Dec 1808 Thornhill, ENG; m 14 May 1741 Peak Forest, ENG.
170. **FOX**, Thomas; b Smalldale, ENG; d Woodlands, ENG; m 30 Apr 1751 Hope, Derbyshire, ENG.
171. **CHEETHAM**, Mary; b Bradwall, ENG; d Apr 1806 Bradwall, ENG; m 30 Apr 1751 Hope, Derbyshire, ENG.
172. **BRADWALL**, John; b New Wall Nook, ENG; d Derbyshire, ENG; m 02 Jul 1744 Hope, Derbyshire, ENG.
173. **FOX**, Mary; b Smalldale, ENG; d Derbyshire, ENG; m 02 Jul 1744 Hope, Derbyshire, ENG.
174. **DICKENS**, George; b ENG; d 1782 Windmill, ENG.
175. _____, Elizabeth.
180. **STREIT**, Johann Jacob; b 15 Oct 1704 Nauheim, GER; d abt 1797 ?Morris, NJ.
181. _____, Antje; d NJ.
192. **DOTY**, Edward; b 07 May 1705 Rochester, MA; d MA; m 19 Nov 1726 Rochester, MA.
193. **ANDREWS**, Mary; b 24 Sep 1703 Rochester, MA; d MA; m 19 Nov 1726 Rochester, MA.
194. **WARNER**, Jonathan; b 1704 Hatfield, MA; d 28 May 1763 Hardwick, MA; m 08 Aug 1733.
195. **ALLIS**, Bathsheba; b 12 Jan 1710 Hatfield, MA; d MA; m 08 Aug 1733.
196. **COFFIN**, Nathan; b 09 Jun 1695 Nantucket Is., MA; d 04 Dec 1768 Nantucket Is., MA; m 05 Mar 1717 Nantucket Is., MA.
197. **BUNKER**, Lydia; b 1699 Nantucket Is., MA; d 04 Dec 1785 Nantucket Is., MA; m 05 Mar 1717 Nantucket Is., MA.
198. **COLEMAN**, Benjamin; b 1703 Nantucket Is., MA; d 02 Sep 1793 Nantucket Is., MA; m 28 Sep 1726 Nantucket Is., MA.
199. **SWETT**, Huldah; b Feb 1701 Amesbury, MA; d 14 Jun 1793 Nantucket Is., MA; m 28 Sep 1726 Nantucket Is., MA.
200. **FULLER**, Shubael Jr; b 06 Jan 1721 East Haddam, CT; d 1790/1804 ?Savoy, ?Berkshire, MA; m 12 Jun 1755 East Haddam, CT.
201. **CHAPMAN**, Sarah; b East Haddam, CT; d 15 Mar 1816 Lenox, Berkshire, MA; m 12 Jun 1755 East Haddam, CT.
202. **STOCKWELL**, Jeremiah; b 1728/1729 MA; d 02 Apr 1776 Chesterfield, MA; m 27 Nov 1751 Sutton, Worcester, MA.
203. **CUTLER**, Mary; b MA; d 01 Dec 1764 Chesterfield, MA; m 27 Nov 1751 Sutton, Worcester, MA.
204. **KILLEY**, Isaac Sr.; b 08 Jul 1730 Yarmouth, MA; d 15 Nov 1814 MA; m MA.
205. **SHERMAN**, Judith; b 03 Aug 1732 MA; d 03 Mar 1792 MA; m MA.
206. **ALDRICH**, Peter Jr.; b 14 Nov 1722 Mendon, Worcester, MA; d 17 Mar 1799 RI; m 08 Feb 1745.
207. **COMSTOCK**, Esther; b Providence, RI; d Jun 1785; m 08 Feb 1745.
216. **LOCKE**, William; b 28 Jun 1684 MA; d 29 Jan 1767 MA; m MA.

217. **RUSSELL**, Jemima; b MA; d MA; m MA.
218. **AYRES**, William; b 16 Dec 1700 Ipswich, Essex, MA; d 19 Aug 1789 Brookfield, MA; m 08 Jan 1724 MA.
219. **HAMELTON**, Hannah; b abt 1704 Brookfield, MA; d 08 Dec 1748 Brookfield, MA; m 08 Jan 1724 MA.
220. **BLODGETT**, Josiah; b 28 Jul 1724 Enfield, Hartford, CT; d 25 Apr 1768 East Windsor, CT; m 15 Jan 1747 CT.
221. **ROOD**, Abigail; b 01 Feb 1723 Stafford, CT; d 06 Jun 1776 CT; m 15 Jan 1747 CT.
222. **BARTLETT**, Jonathan; b 01 Aug 1716 Northampton, MA; d 29 Mar 1799 Hartford, Hartford, CT.
223. **WATSON**, Hannah; b 04 Apr 1713 Windsor, Hartford, CT; d 1806 CT.
288. **HILL**, Robert; b Bradwall, ENG; d aft 1719 Derbyshire, ENG; m 01 Jun 1697 Handsworth, ENG.
289. **ELLIS**, Anna; b Yorkshire, ENG; d 16 Nov 1776 Bradwall, ENG; m 01 Jun 1697 Handsworth, ENG.
292. **BRADWALL**, Hugh; b Derbyshire, ENG; d 24 Mar 1724 New Wall Nook, ENG; m bef 1709 Hope, Derbyshire, ENG.
293. _____, Grace; b ENG; m bef 1709 Hope, Derbyshire, ENG.
294. **FOX**, Thomas; b bef 1700 ENG; d 10 Feb 1761 Smalldale, ENG; m bef 1720 ENG.
295. _____, Alice; b bef 1700 ENG; d 30 Jan 1774 Bradwall, ENG; m bef 1720 ENG.
296. **DARWENT**, Edmund; b Thornhill, ENG; d Aug 1715 Thornhill, ENG; m 03 Nov 1709 Hope, Derbyshire, ENG.
297. **BURLEY**, Rachel; b Derbyshire, ENG; m 03 Nov 1709 Hope, Derbyshire, ENG.
298. **WILSON**, Matthew; b 1698 Thornhill, ENG; d Dec 1755 Thornhill, ENG; m 21 Sep 1719 Hope, Derbyshire, ENG.
299. **MARSHALL**, Isabella; b Bradwall, ENG; d Feb 1759 Thornhill, ENG; m 21 Sep 1719 Hope, Derbyshire, ENG.
300. **FOX**, Thomas; b bef 1700 ENG; d 10 Feb 1761 Smalldale, ENG; m bef 1720 ENG.
301. _____, Alice; b bef 1700 ENG; d 30 Jan 1774 Bradwall, ENG; m bef 1720 ENG.
302. **CHEETHAM**, John; b Bradwall, ENG; d Bradwall, ENG; m 09 Dec 1726 Hope, Derbyshire, ENG.
303. **BRADWALL**, Anna; b 1706 Bradwall, ENG; d 1772 Bradwall, ENG; m 09 Dec 1726 Hope, Derbyshire, ENG.
312. **MORTON**, Thomas; m 08 Jul 1703 Ecclesfield, ENG.
313. **SADLER**, Ruth; m 08 Jul 1703 Ecclesfield, ENG.
320. **HAUGHTON**, Alfred; b bef 1690 Cheshire, ENG; d ENG.
328. **BEAUMONT**, William.
329. **HAIGH**, Ann.
332. **CORKER**, John.
335. **BLYTHE**, Elizabeth; b Sheffield, ENG.
336. **DARWENT**, Edmund; b Thornhill, ENG; d Aug 1715 Thornhill, ENG; m 03 Nov 1709 Hope, Derbyshire, ENG.
337. **BURLEY**, Rachel; b Derbyshire, ENG; m 03 Nov 1709 Hope, Derbyshire, ENG.
338. **WILSON**, Matthew; b 1698 Thornhill, ENG; d Dec 1755 Thornhill, ENG; m 21 Sep 1719 Hope, Derbyshire, ENG.
339. **MARSHALL**, Isabella; b Bradwall, ENG; d Feb 1759 Thornhill, ENG; m 21 Sep 1719 Hope, Derbyshire, ENG.
340. **FOX**, Thomas; b bef 1700 ENG; d 10 Feb 1761 Smalldale, ENG; m bef 1720 ENG.
341. _____, Alice; b bef 1700 ENG; d 30 Jan 1774 Bradwall, ENG; m bef 1720 ENG.
342. **CHEETHAM**, John; b Bradwall, ENG; d Bradwall, ENG; m 09 Dec 1726 Hope, Derbyshire, ENG.
343. **BRADWALL**, Anna; b 1706 Bradwall, ENG; d 1772 Bradwall, ENG; m 09 Dec 1726 Hope, Derbyshire, ENG.
344. **BRADWALL**, Hugh; b Derbyshire, ENG; d 24 Mar 1724 New Wall Nook, ENG; m bef 1709 Hope, Derbyshire, ENG.
345. _____, Grace; b ENG; m bef 1709 Hope, Derbyshire, ENG.
346. **FOX**, Thomas; b bef 1700 ENG; d 10 Feb 1761 Smalldale, ENG; m bef 1720 ENG.

(To be continued next issue)

The End



SURNAME FILE

by Delillah Knight

CCGS members have been requested to submit surname cards and ancestor charts. The surname cards are added to the surname index available to researchers visiting the CCGS library. Delillah Knight selected enough entries to fill four pages of the Trail Breakers for publication. Roy Katschke takes submitted ancestor charts and formats them for the Ancestor Cards section of this quarterly. Members are encouraged to update their information when appropriate. Publication of the information has led to shared information which has helped both our members and other researchers. Submitters are underlined and their addresses are found at the end of the section.

BUCKMAN, Abraham Harding b: Bucks County, PA; son: Theodore **BUCKMAN** (b: 21 JAN 1945 IN, d: 04 MAY 191 Seattle, Wa). DOLLAR

BUCKMAN, Cora, b: 16 Oct 1869 Canby, OR, f Theodore **BUCKMAN** (b: 21 Jan 1845 IN, d: 4 May 1914 Seattle, WA) mo Kitty **ASHCRAFT** (b: 31 Oct 1844 Mt. Olive, NY, d: 31 Mar 1911 Vancouver, WA) m Alva Martin **CONDIT** (b: 23 Dec 1862 Aumsville, OR, d: 14 May 1949 Vancouver, WA) 25 Dec 1900 Multnomah Co., OR, s John Theodore **CONDIT** (b: 27 Jul 1902 Canby, OR, d: 18 Apr 1981 Lincoln City, OR), dau Lydia Lillian **CONDIT** (b: 29 Sep 1903 Can, d: 17 Oct 1941 Vancouver, WA) s Ralph Emerson **CONDIT** (b: 16 Jan 1906 Canby, OR, d: 9 May 1991 Vancouver, WA), s Ormet Martin **CONDIT** (b: 20 Aug 1908 Canby, OR, d: 1970 Vancouver, WA).
DOLLAR

BUCKMAN, Theodore b: 21 Jan 1845 IN, d: 4 May 1914 Seattle, WA, f Abraham Harding **BUCKMAN** (b: Bucks Ct., PA) mo Lydia Ann (Libby) **HOLLOWAY** (b: 1812 Nantucket, MA) m Kitty **ASHCRAFT** (b: 31 Oct 1844 Mt. Olive, NY, d: 31 Mar 1911 Vancouver, WA) 7 Jan 1886 Marshall Ct., IN.
DOLLAR

BUCKMASTER, Damaris, b: Eng, m bef 1624 Eng John **HOUGHTON**, d Eng. FISHER

BUCKMASTER, Joseph, b: prob PA, m Elizabeth **SICKMAN**, (b: prob PA, dau Sarah Rebecca. GARD

BUCKMASTER, Sarah Rebecca. See **WOODRUFF**, William. GARD

BUDKE, Harmond, b: abt 1832 Hanover, Ger, m abt 1857 Ger, Katherine **VON DREHLE**, d abt 1902 Ger. WALKER

BUHRING, Ernest, b: 14 Apr 1850, m Mary **PUTRAH** (b: 4 Mar 1852 Can, d: 20 Dec 1919 Tallahassee, FL, p Joseph & D.K. **PUTRAH**) d: 6 Feb 1928 Tallahassee, FL. CARD

BUHRING, Mary Margaret, p Ernest & Mary **BUHRING**. See: **LANEBERG**, Albert F.L. CARD

- BULL**, Elisha, b: 16 Mar 1856 NY, m 16 Jan 1884 Ida Taylor **HUTCHINS** (b: 30 Jan 1855 NY, d: 16 Jan 1903) d: 2 Nov 1932. ZORTMAN
- BULL**, Irma May. See: **WITHERIL**, Clair Henry. ZORTMAN
- BULL** - Int. Georg **BULL** fam; li SD abt 1890. From Nor. DUNHAM
- BULL**, Mary, m John G. **WANTON** (1729-1799) OMAN
- BULLARD**, Martha 1690- MA, m Eleasure **FAIRBANKS**; Samuel, MA. GILMAN
- BULLOCK**, Fred Howard, b: 25 Nov 1881 Portland, OR, f Menzo D. **BULLOCK**, mo Maria **STAMP**, m Anna Laurette **BATEMAN**. VEEK
- BULLOCK**, Menzo D., m Maria **STAMP** 16 Jun 1874 Vancouver, WA, d: 8 May 1894 Clark Ct., WA, bur Old City Cem. VEEK
- BUNDY**, Nathaniel b: 1806 Otsego Co., NY; Cynthia b: 1847 Otsego Co., NY. DUNHAM
- BUNKER** (Nantucket, MA) Anna (1748-1828) m Nathan **GARDNER** 1765; William (1726-1768) m Mary **RUSSELL** 1746; Caleb (1699-1777) m Priscilla **BUNKER** 1725; George (1671-1743) m Deborah **COFFIN** 1695; Priscilla (1703-1795) m/2 Caleb **BUNKER**; Peleg (1676-1730) m Susanna **COFFIN** 1700; William (1648-1712) See **BUNKER** - 4. KUECHMANN
- BUNKER** (Nantucket, MA) Rachel (1752-1831) m Tristram **SWAIN**; Priscilla (1745-1819) m Abraham **MACY**; Samuel (1711-1786) m Priscilla **COLEMAN** 1732; Jabez (1678-1750) m Hannah **GARDNER** 1706; William (1648-1712) See **BUNKER** - 4. KUECHMANN
- BUNKER** (Nantucket, MA) Ruth (?-1779) m Richard **COFFIN** 1718; Jonathan (1674-1721) m Elizabeth **COFFIN**; William (1648-1712) See **BUNKER** - 4. KUECHMANN
- BUNKER** (Topsfield & Nantucket, MA) William (1648-1712) m Mary **MACY** 1669; Mary (1652-1724) m Stephen **COFFIN** 1668; Ann (1654-1698) m Joseph **COLEMAN** 1672; Martha (1656-1744) m Stephen **HUSSEY** 1676; George (?-1658) m Jane (Eliza) **GODFREY**. KUECHMANN
- BUNSCHKI**, Christina, m John **GOETZ** (?), s Paul **GOETZ**, d 1890 RODGERS
- BURKE** (IN, OR) VILES
- BURKET**, Rachel G. 1840-1904 AR, m John Washington **BENTON**; William, m Rachel **HUGHES**. FISH
- BURKHART**, John. HUESSER
- BURKHART**, Mary Magdalene. See: **MARTZ**, John Sebastian. HUESSER

BURLEIGH, Frank Wilbert b: 10 Nov 1887 Mt. Ayr, IA, m Laura Amelia Avenall **FISHER** 14 Apr 1911 Fremont, NE, d: 24 Mar 1971 El Cajon, CA, bur El Cajon Cem. RECTOR

BURLEIGH, Helen Wilberta b: 2 Nov 1913 Kilgore, Cherry Ct., NE, f Frank Wilbert **BURLEIGH**, mo Laura Amelia Avenell **FISHER**, m Ralph Smith **RECTOR** 15 May 1931 Sioux Falls, SD. Children: Patricia, Doris, Lloyd, Roy, John. RECTOR

BURLEIGH/BURLEY, Hiram J., b: 5 Nov 1816 Vernon, NY, f Luke **BURLEIGH/BURLEY**, mo Lucretia **BROWN**, m Caroline Elizabeth **HOLCOMB** 24 Dec 1845 Westmoreland, NY, d: 26 Apr 1902 Des Moines, IA. RECTOR

BURLEIGH, James Wilbert, b: 27 Feb 1854 Vinton, IA, f Hiram J. **BURLEIGH**, mo Caroline Elizabeth **HOLCOMB**, m Harriet Irma **SPEARS** 1881, d: 21 Mar 1923 Crawford, NE, bur Old Crawford Cem, Crawford, NE. RECTOR

BURLEY, John, b: ca 1696, Eng, m Meriam **FULLER**, d: Union, Tolland Co., CT. RECTOR

BURLEY, Josiah, b: 8 Nov 1742 Lebanon, CT, f John **BURLEY**, mo Meriam **FULLER**, m Hannah **HISCOCK** 2 Dec 1765 Union, CT ?, d: 13 Nov 1790. RECTOR

BURLEY, Luke, b: 7 May 1778 Union, CT, f Josiah **BURLEY**, mo Hannah **HISCOCK**, m/2 Lucretia **BROWN** 2 Nov 1815 Stafford, CT. RECTOR

BURNHAM, Elizabeth, s William **PROUTY** (b: 4 Jul 1800 Marlborough, VT); s Alanson **PROUTY** (b: 24 Nov 1814 Oswego, Oswego, NY, d: 31 Dec 1896 Eagle, Cass, NE); s Abel **PROUTY** (b: Marlborough, VT, d: Derbin, MI); s Francis **PROUTY**; s Sanford **PROUTY**; dau Sally **PROUTY** (b: Oswego, Oswego, NY); dau Betsey **PROUTY** (b: Oswego, Oswego, NY). ST. JOHN

BURNS, Elizabeth Angeline, b: 1 May 1913 Oklahoma City, OK, m Claude Russell **REYNOLDS** 15 Apr 1929 OK, d: 27 Jun 1929 Oklahoma City, OK. KATSCHKE

BURNS, Jane M., p William & Mary **BURNS**, m Samuel **FAULKNER** 10 Dec 1841 Monroe Co., VA, d: 1900 Greenbrier Co., WV. CONNICK

BURNS, Martha Ann, b: 29 Aug 1851, f Henry H. **BURNS**, mo Harriet **THACHER**, m Worthington Joseph **JONES** 11 Mar 1875 Johnson Co., IL, d: 7 Nov 1932 Indianola, OK, bur Tannehill Cem, McAlester, OK. ALLEN

BURNS, Mary. See: **GATES**, Abel ERVEN

BURNS, Nancy. See: **LONG**, William.

BURNS, William, m Mary. CONNICK

BURR, Jehu b: 1600 Eng d: ca 1672 Fairfield, CT; Nathaniel b: 1640 d: 1712 Fairfield, CT; Ann b: ca 1676, d: 1748. OMAN

BURROW, James Earnest, b: 21 Sep 1857 Ambleside, Cumbria, Eng, m Eng, d: 3 May 1947 Tacoma, Pierce, WA. BECKER

BURROWS, Beverlee Alice, b: 7 Jul 1922 Tacoma, Pierce, WA, f James Earnest **BURROWS** (b: 22 Oct 1894 Dubuque, Dubuque, IA, d: 10 Jun 1992 Tacoma, Pierce, WA) mo Dorothy Pearl **MCLEAN** (b: 20 Feb 1896 Tacoma, Pierce, WA, d: 1 Nov 1968 Tacoma, Pierce, WA) m 20 Feb 1944 Tacoma, Pierce, WA August Altuf **STORKMAN** (b: 16 Dec 1920 Glenns Ferry, ID) dau Stephanie Gene **STORKMAN** (b: 4 Feb 1945 Tacoma, Pierce, WA, d: 8 Feb 1945 Tacoma, Pierce, WA); dau Diane Marie **STORKMAN** (b: 19 Jan 1947 Tacoma, Pierce, WA); s James August **STORKMAN** (b: 23 May 1950 Tacoma, Pierce, WA); dau Martha Louise **STORKMAN** (b: 31 Jul 1954, Tacoma, Pierce, WA) BECKER

BURROWS, Beverlee Alice. See: **STORKMAN**, August Altuf. BECKER

BURROWS, J., s James Ernest **BURROWS** (b: 21 Sep 1857 Ambleside, Eng, d: 3 May 1947 Tacoma, Pierce, WA). BECKER

BURROWS, James Ernest, b: 21 Sep 1857 Ambleside, Eng f J. **BURROWS**, m abt 1884 Eng Mary Alice **HOLT** (b: 10 Dec 1857 Crewe, Cheshire, Eng, d: 15 Aug 1919 Tacoma, Pierce, WA) dau Mary Alice (Mamie) **BURROWS** (b: abt 1888 Dubuque, Dubuque, IA, d: Aug 1919 Tacoma, Pierce, WA); dau Hulda **BURROWS** (b: abt 1893 Dubuque, Dubuque, IA, d: Aug 1919 Tacoma, Pierce, WA) s James Ernest **BURROWS** (b: 22 Oct 1894 Dubuque, Dubuque, IA d: 10 Jun 1992 Tacoma, Pierce, WA); s Wilfred Ewart **BURROWS** (b: 28 Sep 1896 Dubuque, Dubuque, IA, d: 4 Jun 1965 Tacoma, Pierce, WA). BECKER

ADDRESSES OF SUBMITTERS

ALLEN Martin 415 NE 194th St. #7 Ridgefield, WA 98642-9403
 BECKER Diane 1115 NE 107th St. Vancouver, WA 98685
 CARD Judy 37001 NW Pacific Hwy. Woodland, WA 98674
 CONNICK J. 4920 Spirit Lake Hwy., Silver Lake, WA 98645
 DOLLAR Betty Condit 3929 NW Jetty #3, Lincoln City, OR 97367
 DUNHAM Jeannie 6902 Riverside Drive #2 Vancouver, WA 98664
 ERVEN Beverly 16100 NE Charlson Drive, Battle Ground, WA 98604
 FISH Mrs. Eura L. 1710 X St., Vancouver, WA 98661
 FISHER Robert 714 W 43rd St., Vancouver, WA 98660-1657
 GARD Betty Post Office Box 248, Woodland, WA 98674
 GILMAN Gerry F. 3777 Addy St. #39, Washougal, WA 98671-2768
 HUESSER Mrs. Carol Post Office Box 167, De Beque, CO 81360-0167
 KATSCHKE Mary L. 14413 NE 185th St., Battle Ground, WA 98604
 KUECHMANN Gene 8113 NE 25th Ave., Vancouver, WA 98665
 OMAN Kitty R. 8701 NE Pierce Dr., Vancouver, WA 98662
 RECTOR Helen B. 3409 Main St. #524, Vancouver, WA 98663
 RODGERS A. 23039 SE McIntosh Rd., Camas, WA 98607
 ST. JOHN Jerri 4809 NW 254th St., Ridgefield, WA 98642-9334
 VEEK A.
 VILES Alice A. Rt. 1, Box 636, Scappoose, OR 97056
 WALKER Pat & Carol 8009 NW 12th Ave., Vancouver, WA 98665
 ZORTMAN Jeannie M. 6617 NE 137th St., Vancouver, WA 98686

QUERIES

Queries are read by researchers in all regions of the United States and parts of Canada. The *Trail Breakers* is sent to research libraries and genealogical societies throughout the country. Queries are free to all genealogists. Send your query to *Queries Editor, Clark County Genealogical Society, P.O. Box 2728, Vancouver, WA 98668.*

PENK
THEEDE

Seeking information on grandmother Henriette Wilhelmine Margarete PENK, b. 1859/60 Holstein, GER, m. Claus Jacob THEEDE 1 Jun 1879 Grant Park, IL, lived Fremont, NE from 1880 until death 18 Mar 1892. Children: Louis Heinrich, William Frederick (father), Henriette Wilhelmine "Minnie."
Delillah T. Knight, 3205 E. McLoughlin Blvd., Vancouver WA 98661

BOARDMAN
CASPER

Want to make contact with someone researching either the BOARDMAN or CASPER families of Clark Co., WA. Clarence CASPER m. Ellen BOARDMAN and had son, Eldred Irwin CASPER, b. 13 May 1914.
Pauline Thomas, Box 6346, Tahoe City, CA 96145.

PARKS
HARRIS
BUTTS
AVERY
LAWYER

Searching for information on family of Peterson PARKS, b. 1840 Chariton Co, MO, d. 1927 Taft, FL; m. Sarah HARRIS, 10 May 1963, Little Rock, AR. Family lived in Woodland, WA for a while. Children: son, b/d May 1964, Arkebelle, b. 2 April 1867, m1 James A BUTTS, m2 ? AVERY; Florence; John J.; Rector B.; William P.; Henrietta Dean, m. Henry LAWYER, d. Nov 1920 Portland, OR.
Joy Shreyer, 8274 82nd Ave., NE, Silverton, OR 97381.

DOOLITTLE
PHIPPEN
NELSON
DAVIS

Ephriam DOOLITTLE, b. 1854 WI, d. 3 Nov 1925 Salem, OR; m. Lois PHIPPEN ca 1875 WI. Do you have any information? Children, all b. WI: Ida b 1877, d. 1900 WI, m. Orville Leonard NELSON; Levi b 1881, m. Margaret DAVIS 7 Oct 1916 Clark Co., WA; Orrin, b. Sep 1883; Mina, b. Aug 1887; Samuel, b. Dec 1890; Gusta, b. Jan 1892; Olive, b. Jun 1893; Clifford, b. Jun 1895, m. Vernice ?; Ada, b. 1897. Some of the children lived in the Portland, OR, area.
Marvin Richter, P.O. Box 341, Pembine, WI 54156.

WINSTON
FISHER
PHILLIPS

Looking for information about descendants of William WINSTON, b. 1819, Green Co., KY, d 2 Dec 1887 Louisville, KY, m. Angelletta ____? ca 1839. Children: James M., b. 1842 Marion Co., KY; Sarah b. ca 1846 Marion Co, Ann E. b. ca 1848; Erasmus N. b. 1854 Louisville, d. 1912 Louisville; possibly another son, William M. Erasmus WINSTON m. Florence FISHER in 1880s. Children of Erasmus: George W., b 1884; William N. b. ca 1883; unidentified daughter who m. William PHILLIPS. Family lived in Louisville area from 1850 to about 1950.
Peggy Winston, 901 E. 34th St., Vancouver, WA 98663-2308.

- HUDELSON
HUDDLESTON** Need arrival date, vessel, port of entry of HUDELSON/HUDDLESTON when they came to United States. [No dates or other information supplied.]
Russell Oubre, 129 East Philadelphia Street, Rapid City SC 57701-1555.
- RUNDLE
LESTER** Need m2 of Nyrum Curtis RUNDLE b 1844 Marion Co., OH. Moved to Washington Co., Iowa. 1st wife d. before 1880. Nyrum and father William moved to Spokane(e) & Vancouver WA abt 1885. Need date & place of marriage, wife's name. When, where did she die, where is she buried? Children: Olive Alice, b. 1865 Iowa, d. 22 Dec 1948 Pacific Co., WA; Phoebe Josephine, b. 1866 Iowa; Julia Ann b. 1868 Iowa; Francis Edwin b. 1869 Iowa, d. 15 Feb 1842, buried Salmon Creek Cem.; Orlando LeRoy b. 1873 Iowa, d. 1 Oct 1909, bur Salmon Creek Cem.; William W. b. 1877 Iowa, Myterl [Myrtle LESTER of Hood River OR] b. WA. Nyrum Curtis RUNDLE d. 4 Feb 1938 Vancouver, Clarke Co., WA; buried Salmon Creek Cemetery.
Joyce E. Posey, 210 Chesterfield Cir, Dayton OH 45431-1461.
- DAVIS
MASON** Need parents of William Henry DAVIS born in Wales and came to the United States and IL in 1860s. Son John Henry DAVIS (b. 2-7-1863 either on ship to US or in IL) who was bonded to Robert MASON in Carlyle IL at age two. Who was his father, mother, other members of the family. He had a relative Caleb DAVIS in IL believed to be a brother.
Marthat M. Carlson, 1-360-576-1406, 1204-B N.W. 131st Way, Vancouver, WA 98685-1643
- CARTWRIGHT** Who are parents of Henry CARTWRIGHT? He had dau Mabel b. IL 1882, d Salt Lake City UT in 1967, never married. Who was his wife and did he have other children?
Marthat M. Carlson, 1-360-576-1406, 1204-B N.W. 131st Way, Vancouver, WA 98685-1643
- DAVIS** Inquiring about parents of Thomas DAVIS b. 1857/8 in Wales, came to IL about 1860. Two daughter Anna and Elsie b. 1180-1890 lived in Greenville, IL area. Who was his father, mother, other family members?
Marthat M. Carlson, 1-360-576-1406, 1204-B N.W. 131st Way, Vancouver, WA 98685-1643
- GOLEY
RAUNABARGA** Searching for maternal family, the GOLEY's. Alfred Monroe GOLEY, b. May 31, 1966 NC, d. 8 Feb 1930 Vancouver, WA; m. 22 Feb 1893 Stillwater, OK to Nettie RAUNABARGA, b. 20 Jan 1872 Nevada, MO, d. 20 May 1957 Vancouver, WA, both buried Park Hill Cemetery. Any information welcomed.
Susan Michaelis, 701-241-7881, 3530 - 28th St. S.W. #104, Fargo, ND 58104

- COEN Where was Edgar COEN b? He m Mary HOOKUM, b. Sweden. Children:
 DIXON Edith m. Clarence DIXON; Arnold Wm. m. Marion McNett; Ethel Lucille b.
 WHITLINGTON Jun 1904, m. Walter WHITLINGTON.
Carol (Coen) Huesser. 970-283-5725, 1675 - 45 1/2 Rd., De Beque, CO 81630-0167.
- COCKAYNE Looking for desc. of Clarence E. COCKAYNE b. 1869, m. Rosa V. COEN
 COEN (d. 1973 Winfield, Henry CO., IA). Clarence was a mill worker, owned a
 JENSEN planing mill in Henry Co., IA. Children: Gladys, m. Oscar JENSEN; Basil
 LINDELL E. b. 1897, d. 1898; Izslle, b. c 1893, m. Walter LINDELL; Esther, b. c.
 CECIL 1903, m. Clifford CECIL.
Carol (Coen) Huesser. 970-283-5725, 1675 - 45 1/2 Rd., De Beque, CO 81630-0167.
- JENNINGS Want info on desc. of Wm. J. JENNINGS, b. c. 1876, Winfield, Henry Co.,
 COEN IA, m. 30 Apr 1901 Myrtle COEN, b. 1881 Wapello Co., IA, d. 1961
 LYMON Winfield, Henry Co, IA. Daughter of Isaac LYMON & Sarah Elizabeth
 YOUNG (YOUNG) COEN. Children: Leland, Lonnie & Nola.
Carol (Coen) Huesser. 970-283-5725, 1675 - 45 1/2 Rd., De Beque, CO 81630-0167.
- LAYTON LAYTON was an obvious family name - but where did it come from????
 SULLIVAN My 3-gr grandmother was Mary Layton SULLIVAN. She named her first
 FRISTOE daughter Beersheba Layton FRISTOE. Mary's father was Charles
 TAYLOR SULLIVAN and they lived in McMinnville, Warren Co., TN, Guilford, NC,
 and possibly SC & VA. There was supposed to be a relationship to Pres.
 Zachary TAYLOR. She married Richard Marshall FRISTOE of Knox Co,
 TN is 1815. Is there a LAYTON Family publication? Does anyone know
 what the LAYTON connection is?
Donna Talley Lesnisk, 2736 W 96 Pl, Evergreen Park, IL 60805-2721

Genealogy Column Feature in Thursday Columbian

Have you picked up the Thursday *Columbian* (Vancouver, WA daily newspaper)? Read the "Neighbors" section? Noticed a usually every other week column by Donna Potter Phillips? If you haven't, begin to look for it. Sometimes Laura Starr has a small section of "... years ago" articles with a photo that interesting on the "other weeks," so even if Donna's column isn't in that week, you are bound to find looking worthwhile.

Donna gave our society great press recently! Timely for beginning our new year. She has plugged the major events for the year: The fall workshop on Nov. 4, the Spring Seminar with George Schweitzer Saturday, March 23, 1996, our Clark Classes, etc. She even gave a very nice review of the *Trail Breakers!* (Thanks!)

Donna's most recent column was about Missouri research. She had done past columns about Canada, Family history centers, and lineage organizations. She also has some fun fillers -- that bit more space needed to balance or finish the column. "Beatitude of a Genealogist" was sent in by LaMora Sullivan from Vancouver. I think you'll enjoy the column -- look for it. (If you're not in our area, check to see if Donna or another column is in your paper. If not, ask your local paper to start publishing a genealogical column!)

THE COST

New Library?

O.K.! We know what we want. We want a new building for our library, print shop, etc. We also know that we don't have the money to buy one so we need to raise the money over the next three to five years. To recap we need to raise about \$225,000 to cover the cost of the building, closing costs and relocating costs and funds to raise funds. And, alas, that Lotto ticket you bought for us didn't pan out. (You WERE being honest with us, right?)

So our sources of funds are (a) grants, (b) local business contributions, (c) fund raising events and (d) member contributions.

(A) Grants are the biggest source of funds but they are the most unlikely. Not only locally, but nation wide money is drying up like Death Valley. Even major fund raisers like United Way are finding it more difficult to raise funds. Locally, fund raisers like the Historical Society/Museum and Fort Vancouver project are finding their grant request turned down. Too many groups asking for more than what is available.

Relatively speaking our grant requests will be small but the money is just as tight. We do have a couple of members that have grant writing experience but they

will need help in identifying grant givers, preparing the grant requests, managing funds received and preparing and reporting back to grant givers on how their money is being used.

We need to obtain about \$120,000 from grants. This would mean working with up to 30 grant givers and require the efforts of about 6 people.

(B) Local Business Contributions will be the second major source of funds. We will need to raise about \$60,000 from local business, Doctors, Lawyers, etc. Local business, like the grant givers are also not as free with their money as in past years. And because moneys are tight, they are being asked more frequently to give.

Competition will be stiff and will get worse tomorrow. If we are to succeed in this goal we must do more than just sit back and make a few phone calls. We must write letters explaining our societies contributions to the community and justifying our needs for a replacement building. We must make phone contacts to pave the way to a personal contact.

We must make our approach personally, professionally, with pride and conviction. Not many of us have all these capabilities sitting in our repertoire of tricks waiting to jump out on short notice. So we need find volunteers with conviction,

provide them training and guidance, and support them with the funds, advertising and materials to help them do their job effectively.

To raise this much money we would have to approach up to 3000 business over three to five years. This would require about 30 volunteers.

(C) Fund raising events like bake sales, yard sales, information booths at fairs, malls or other areas where many people may gather. These are frequently very productive provided we have attractive presentations. We would like to raise \$5000 this way. *(Note that our last yard sale cleared over \$1400.)* But it does take some work and planning. We would need about 5 people to plan and coordinate these events. Another 10 to 20 volunteer would be needed to help at the sales or booths.

(D) Membership contributions. Our members are what make this society what it is today. They are the ones that provide the bulk of the volunteer hours and directly or indirectly, the funds that keep us alive. We will be asking our members to contribute not only volunteer time but contributions to the building fund. We need to raise \$9000 over three to five years from our members.

This will take the efforts of two volunteers to prepare information, write to members, make telephone calls and thank those that have contributed.

It should be pointed out that the effort and funds for the building cannot come from the funds and efforts that our

volunteers are spending every day to keep our society going. We must continue to keep our Gee creek fund-raisers, seminars, college classes, book printers, etc., going to raise funds to meet day to day expenses.

We need each of you to contribute in any way that you can, be it in volunteer time or contributions.

This is a big project and it requires a lot of support. Therein lies the question... *Do we have your support?* Do we have enough members available willing to volunteer their time and their contributions. It is easy to find a reason to say "NO". How many will skip the excuses and just say "YES"?

CCGS needs to know how much and what kind of support there is for a new building. A questionnaire will be mailed to each member to find out. Will you please answer the questions and return it to us promptly. If CCGS is to acquire a building, members need to make an investment of a variety of resources. Many have worked hard to develop a society with a well known reputation. It's time to stretch our boundaries further.

We are asking you for a commitment: a commitment of your support, your time, and your contributions.

Be watching for the questionnaire, study it, and return it. Please feel free to make any suggestions or comments. If you need to write a separate letter, please do. You may be the one with just the appropriate idea!

INDEX

- A -

A'HEREN, 23, 24
ACTLEY, 8
ADAMS, 19
ALDRICH, 20, 31, 32
ALLEN, 36, 37
ALLIS, 32
ANDERSDOTTER, 29
ANDERSON, 28
ANDREW, 26
ANDREWS, 32
ARMSTRONG, 17, 19
ARNOLD, 13
ARTLEY, 8
ASHCRAFT, 34
AUGENBLICK, 8
AVERY, 38
AYRES, 31, 33

- B -

BABBITT, 23
BABER, 1
BAESCHLIN, 8
BAGLEY, 16
BAILEY, 27
BAKER, 7, 8
BALDOSER, 30
BARNARD, 43
BARON, 30
BARTLETT, 31, 33
BATEMAN, 35
BAUER, 22
BAXTER, 22
BEALL, 20, 26
BEAUMONT, 30, 31, 32,
3
BECKER, 8, 37
BEEL, 18
BELKNAP, 26
BENTON, 35
BERRY, 9
BISHOP, 26
BLAKESLEE, 31
BLODGETT, 31, 33
BLYTHE, 32, 33
BOARDMAN, 38
BOERSMA, 16, 21
BOERSMAN, 18
BOSON, 19
BOWMAN, 20
BRADLEY, 16

BRADWALL, 30, 31, 32,
33

BRIGGS, 8
BROAD, 25
BROUILLETTE, 26
BROWN, 26, 36
BROWNING, 8
BUCKMAN, 34
BUCKMASTER, 34
BUDKE, 34
BUHRING, 34
BULL, 35
BULLARD, 35
BULLOCK, 35
BUNDY, 35
BUNKER, 32, 35
BUNSCHKI, 35
BUNTING, 7, 20
BURCSTAHLE, 8
BURGSTAHLE, 8
BURKE, 35
BURKET, 35
BURKHART, 35
BURLEIGH, 36
BURLEY, 18, 33, 36
BURNHAM, 36
BURNS, 36
BURR, 37
BURROW, 37
BURROWS, 37
BUSSARD, 18
BUTTON, 19
BUTTS, 38

- C -

CAPLES, 22, 27
CARD, 34, 37
CARLSON, 39
CARTWRIGHT, 39
CASPTER, 38
CECIL, 40
CHAPMAN, 32
CHAPPELL, 9
CHASE, 12
CHEETHAM, 32, 33
CHRISTENSON, 12
CHURCHILL, 8
CLAUSEN, 21
CLAYTON, 31
COCKAYNE, 40
COEN, 40
COFFENBERRY, 25

COFFIN, 31, 32, 35
COLEMAN, 25, 31, 32
COLLINS, 28, 29
COMSTOCK, 32
CONDIT, 34
CONNICK, 36, 37
CORBETT, 25
CORKER, 31, 32, 33
CROOK, 13
CROWDER, 31, 32
CULLEN, 29
CUSTARD, 21
CUTLER, 32

- D -

DALY, 25
DANIELS, 28
DARWENT, 31, 32, 33
DAVIDSON, 23
DAVIS, 16, 38, 39
DERWENT, 30
DICKENS, 31, 32
DICKSON, 20
DILLING, 8
DIXON, 40
DOLLAR, 34, 37
DONALDSON, 7
DOOLITTLE, 38
DOTY, 29, 30, 31, 32
DOWNING, 23
DRAWSON, 14
DREW, 17
DRIVER, 32
DUNBAR, 17
DUNHAM, 35, 37
DUNN, 14
DURGIN, 24

- E -

EATON, 30, 31
ECKHART, 17
EDWARDS, 9
ELLIOT, 32
ELLIS, 33
ERVEN, 36, 37
EVERETT, 17
FAIRBANKS, 35
FAULKNER, 36
FELLOWS, 20
FELTON, 27
FISH, 35, 37

FISHER, 34, 36, 37, 38
FITSGERALD, 27
FLANDERS, 25
FLETCHER, 23
FORREST, 7
FOSBURG, 17
FOSTER, 20
FOX, 24, 31, 32, 33
FRANK, 20
FREDERICKS, 28
FRISTOE, 40
FULLER, 30, 31, 32, 36

- G -

GALE, 25
GAMBLE, 21
GANDER, 27
GARD, 34, 37
GARDNER, 35
GATES, 36
GEARHART, 26
GEARY, 26
GEORGE, 23
GERMANN, 9
GIBBLE, 7
GILL, 20
GILLIS, 7, 8
GILMAN, 14, 16, 35, 37
GILTNER, 22
GIVENS, 21
GIVINS, 18
GODFREY, 35
GOETZ, 35
GOFORTH, 17
GOLDEN, 7, 16
GOLEY, 39
GOUDE, 17, 18
GRABER, 17
GRABOR, 17
GRAFTON, 14
GRANT, 2
GRATHOUSE, 7
GRAW, 19
GRAY, 18
GREEN, 18
GREW, 19
GUDMUNSON, 17

- H -

HAACK, 27
HAIGH, 33

HALEY, 28
HAMELTON, 33
HAMM, 16
HAMMOND, 16, 19
HANDLY, 26
HANNUM, 18
HANSEN, 28
HANSON, 28
HARRIS, 38
HARSHMAN, 4
HARTLEY, 18
HAUGHTON, 29, 30, 31,
32, 33
HAYDEN, 23
HEAPY, 17
HECTOR, 13
HERZBERG, 13
HILL, 30, 31, 33
HINES, 26
HIRSCH, 17
HISCOCK, 36
HOBSON, 25
HOLCOMB, 36
HOLLOWAY, 34
HOLMES, 7, 22
HOLT, 37
HORN, 18
HOUGHTON, 34
HOWARTH, 29, 30
HUBBS, 24
HUDDLESTON, 39
HUDELSON, 39
HUESSER, 35, 37, 40
HUGHES, 35
HULL, 20
HUSSEY, 35
HUTCHINS, 35

- J -

JAMES, 18
JENNINGS, 40
JENSEN, 40
JOHNSON, 21, 26, 29
JOLLEY, 19
JONES, 36
JONSSON, 29
JØRGENSEN, 28
JØRGINE, 28

- K -

KAROGT, 21
KATSCHKE, 11, 36
KEAPY, 17
KETTERLING, 28

KEUCHMANN, 35
KILLEY, 31, 32
KIMBALL, 26
KINGEN, 21
KINSEY, 27
KNIGHT, 34, 38
KNOGT, 21
KUNZMAN, 18
KUNZMAN, 19

- L -

LAMB, 16, 24
LAMBERT, 20
LANCASTER, 27
LANDERHOLM, 6, 7
LANGEBOG, 34
LATTA, 25
LAWYER, 38
LAYTON, 40
LEESTAD, 21
LELOFF, 17
LEONARD, 23
LESNISK, 40
LESTER, 39
LINDELL, 40
LOCKE, 30, 31, 32
LOCKLEY, 14
LONG, 36
LONGBOTTOM, 32
LORENTZ, 7
LOWE, 20
LUNDGREN, 19
LYMON, 40
LYNN, 29

- M -

MACY, 35
MADSEN, 29
MANS, 26
MANSFIELD, 16
MARSHALL, 19, 33
MARTOCELLO, 29
MASON, 18, 19, 39
MATTHIES, 12
MAULSBY, 25, 26
MAXON, 22
MCBURNEY, 31
McCARNEY, 28
MCCARTY, 25, 28, 29
McCLURE, 24
McCOY, 18
McKAY, 20
MCLEAN, 37
MCMANNUS, 29

MCMANUS, 28
McNETT, 8
MEAD, 16
MICHAELIS, 39
MIDDLETON, 31
MILLARD, 27
MILLER, 25
MILLIREN, 18
MITCHELL, 8
MONTGOMERY, 18
MORELOCK, 16
MORRIS, 29
MORTENSDATTER, 29
MORTON, 30, 31, 32, 33
MURRAY, 25
MYERS, 31
MYLER, 21

- N -

NASH, 28
NELSON, 38
NESBIT, 18
NEWCASTLE, 19
NEWCOMB, 29
NICHOLS, 17, 23, 24
NICHOLSON, 25
NIELSON, 28
NYE, 20

- O -

OKEL, 2
OLNEY, 22
OLSEN, 28
OLSON, 19
OMAN, 4, 35, 37, 43
OSWALD, 19
OUBRE, 39

- P -

PACKARD, 26
PALMER, 20
PALMQUIST, 28, 29
PARKER, 19
PARKS, 38
PARROCK, 21
PATTON, 26
PAUL, 23
PEASE, 25, 26
PENK, 38
PENNA-OAKES, 9
PENNOVER, 27
PERDUE, 16
PERU, 7

PETERSON, 21
PETTIT, 20
PHILLIPS, 38, 40
PHIPPEN, 38
PILE, 28
PINMER, 23
PIONTEK, 4
PIPER, 18
POSEY, 39
POTTER, 40
PRESSLEY, 16, 17, 19, 20
PROEBSTEL, 20
PROUTY, 36
PUTRAH, 34
PYLE, 28

- R -

RABUN, 8
RAUNABARGA, 39
RECTOR, 36, 37
REDFERN, 30
REILLY, 29
REMINGTON, 31, 32
REYNOLDS, 36
RICHARDS, 29
RICHTER, 38
ROBINSON, 19
RODGERS, 35, 37
ROLLINS, 16
ROOD, 33
ROONEY, 29
RUNDLE, 39
RUSSELL, 33, 35
RYLL, 6

- S -

SADLER, 33
SALLEE, 22
SARVER, 30
SAUVAIN, 17
SCHAE BEN, 26
SCHNEIDER, 19
SCOTT, 30, 31
SEVERSON, 7
SHANE, 17
SHAW, 22, 23, 24
SHEA, 26
SHERMAN, 32
SHOOK, 1
SHOREY, 27
SHORT, 27
SHREYER, 38
SICKMAN, 34
SIGLER, 7

SKINNER, 19
 SKOV, 29
 SLAWSON, 29
 SLOAN, 30, 31
 SMITH, 12, 20, 24, 26, 29
 SNOOK, 1
 SNOWDEN, 18
 SPEARS, 36
 SPEDDEN, 22
 SPENCE, 8
 St. CLAIRE, 16
 St. JOHN, 36, 37
 STAGNER, 29
 STAMP, 35
 STANSFIELD, 13
 STAVASS, 21
 STEVENSON, 17
 STOCKWELL, 31, 32
 STONE, 27
 STORE, 16
 STORKMAN, 37
 STOV, 25
 STREIT, 30, 31, 32
 STRODE, 18
 SUISTE, 22, 26
 SULLIVAN, 40
 SUTTON, 30, 31, 32
 SWETT, 32
 SWITZLER, 20

- T -

TAFT, 20
 TAIT, 17
 TARPLEY, 29
 TAYLOR, 19, 29, 40
 TEALE, 19
 THACHER, 36
 THEEDE, 38
 THOMAS, 38

THOMPSON, 17, 26
 TOBIN, 28
 TOWER, 21
 TURK, 21
 TURNBULL, 24

- V -

Van ATTA, 20
 Van VLEET, 22
 VASSAR, 9
 VEEK, 35, 37
 VERDENBERG, 29
 VILES, 35, 37
 Von DREHLE, 34

- W -

WADE/WAIDE, 9
 WAGNER, 17
 WAIT, 19
 WALKER, 17, 34, 37
 WANTON, 35
 WARNER, 31, 32
 WASHBURN, 24
 WATSON, 33
 WEATHRILL, 32
 WEEKS, 20
 WEISLZENKAMP, 21
 WELLS, 13
 WHEELER, 18
 WHITLINGTON, 40
 WIGGINS, 9
 WILCOX, 21
 WILLIAMS, 8, 17, 20
 WILLIAMSON, 31
 WILSON, 28, 29, 32, 33
 WINSTON, 38
 WINTLER, 23
 WIRT, 25

WISWALL, 18
 WITHERIL, 35
 WOOD, 17
 WOODALL, 16, 21
 WOODWORTH, 6, 7
 WRIGHT, 19, 21

- Y -

YOUNG, 40

- Z -

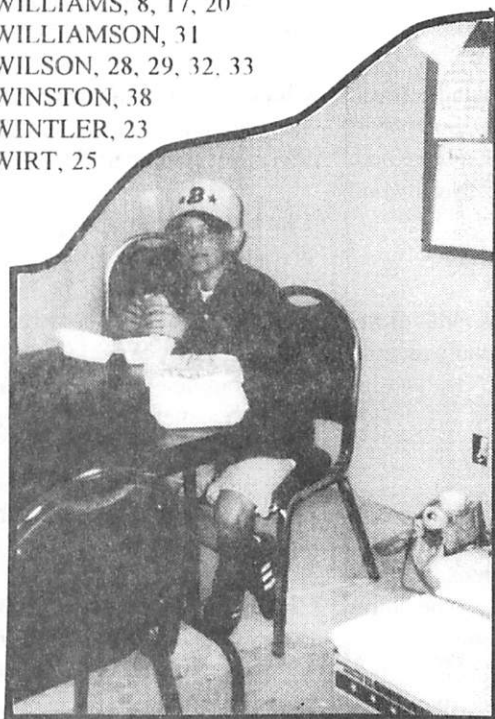
ZIMMERMAN, 13
 ZORTMAN, 35, 37

Mary Barnard: poet

CCGS member Mary Barnard was featured in the *Columbian* last fall: see section B (the Life section), pages 1 and 2 of the Thursday, August 4, 1994 *The Columbian*. In a feature titled "Coming late to honor a poet," Linda Stewart quotes from poems by Mary Barnard, gives a biographical profile of this native Vancouverite, her honors, experiences, and works. The story also related how she became influenced by the poet Ezra Pound. It is always enjoyable to read wonderful things about someone you know in the local paper.

Congratulations Mary!

Christopher, grandson of Kitty Oman, has been helping out in the print shop since he could turn over and crawl. Here he takes a break to enjoy lunch while helping out this summer. Christopher helped take photos of the print shop that are on page 4 of this issue.



Clark County Genealogical Society Publications ~ Fall 1995



Clark County Pioneers ~ Through the Turn of the Century, Rose Marie Harshman - Biographical sketches of pioneers that settled Clark County and their descendants. A wealth of information for Clark County researchers and a treasured heirloom for family members. Many photographs, completely indexed, hard bound, \$3.00 shipping & handling
911 pages, members \$49.50, non-members \$55.00

Clark County Washington Cemeteries, Vol 1, Mildred Porter - Old City Cemetery of Vancouver, tombstone inscriptions, cemetery maps, sexton's records and some obituaries.
184 pages, members \$13.50, non-members \$15.00

Clark County Washington Cemeteries, Vol 2, Includes St. James Acres, Salmon Creek Methodist, St. John's Lutheran, Pioneer & Fisher cemeteries; tombstone inscriptions, cemetery maps, funeral home & sexton's records.
217 pages, members \$13.50, non-members \$15.00

Clark County Washington Cemeteries, Vol 3, Includes Post Military, Dead Lake (Fallen Leaf), Bethel Lutheran, Washougal Catholic, Sara Union, St. Mary of Guadalupe, Ridgefield, Chelatchie Prairie, Bethel Methodist, Mt. Zion & Highland Lutheran cemeteries
274 pages, members \$13.50, non-members \$15.00

Clark County Washington Cemeteries, Vol 4, Includes Washougal, Gardner (Hayes), Sacred Heart, Elim Lutheran, Amboy, Buncombe Hollow, Lewisville, Venersborg, Livingston and Mt. View cemeteries
274 pages, members \$13.50, non-members \$15.00

Clark County Washington Cemeteries, Vol 5, Includes Brush Prairie, Yacolt, Hawk (Fairchild), Page (Red Rock), Sunnyside, Finn Hill, Sifton, Fern Prairie, St. John's Catholic, Hurt Road, Crawford, Gravel Point, Manor Wilson Bridge, Northwood Park & Memory Memorial Park
400 pages, members \$15.75, non-members \$17.50

Clark County Washington Cemeteries, Vol 6, Camas Cemetery, contains plot maps, cemetery history, sexton's records including plot owner, funeral home handling service and information on many unmarked graves
365 pages, members \$15.75, non-members \$17.50

Clark County Washington Cemeteries, Vols. 7 & 8, Evergreen Memorial Gardens, book one A - L, book two M - Z, sold as a set only, contains tombstone inscriptions, sextons records, cemetery map, section and plot numbers, some obituary and family information, \$3.00 shipping & handling
over 900 pages, members \$35.00, non-members \$38.50

Clark County, Washington Census of 1850 & 1860, Vol 1, Mildred Porter - Complete information on all members of household
68 pages, members \$6.75, non-members \$7.50

1870 Census of Clark, Chehalls, Cowlitz, Jefferson & Island Co., WA, Vol 2, Mildred E. Porter, complete information on all members of household
150 pages, members \$13.50, non-members \$15.00

Clark County Washington 1880 Census, Vol. 3, Ralph and Betty Korff - complete information on all members of household
121 pages, \$13.50, non-members \$15.00

Clark County Washington 1900 Census, Vol 4, Rex A. Harrison - complete information on all members of household
234 pages, members \$18.00, non-members \$20.00

Clark County Washington Marriages, Vol 1, Earliest available marriages through 1896, many Oregon residents married here
244 pages, members \$13.75, non-members \$15.00

Clark County Washington Marriages, Vol 2, 1897 - 1904, gives complete information from marriage applications
290 pages, members \$13.75, non-members \$15.00

Clark County Washington Marriages, Vol 3, 1905 - 1909, gives complete information from marriage applications
299 pages, members \$13.75, non-members \$15.00

Clark County Washington Marriages, Vol 4, 1910 - 1913, gives complete information from marriage applications
400 pages, members \$15.75, non-members \$17.50

Clark County Washington Marriages, Vol 5, 1914 - 1915, gives complete information from marriage applications
500 pages, members \$15.75, non-members \$17.50

Clark County Washington Marriages, Vol 6, 1916, gives complete information from marriage applications
217 pages, members \$13.75, non-members \$15.00

Clark County Washington Marriages, Vol 7, 1917, gives complete information from marriage applications
429 pages, members \$15.75, non-members \$17.50

Clark County Washington Marriages, Vol 8, 1918, gives complete information from marriage applications
485 pages, members \$15.75, non-members \$17.50

Clark County Washington Marriages, Vol 9, 1919, gives complete information from marriage applications
429 pages, members \$15.75, non-members \$17.50

Clark County Genealogical Society Publications ~ Fall 1995

Clark County Washington Marriages, Vol 10, 1920, gives complete information from marriage applications 421 pages, members \$15.75, non-members \$17.50

Clark County Washington Marriages, Vol 11, 1921, gives complete information from marriage applications 383 pages, members \$15.75, non-members \$17.50

Clark County Washington Marriages, Vol 12, 1922, gives complete information from marriage applications 276 pages, members \$15.75, non-members \$17.50

Clark County Washington Marriages, Vol 13, 1923, gives complete information from marriage applications 276 pages, members \$15.75, non-members \$17.50

Knapp Mortuary Funerals 1907-1925, Geraldine Gilman - Records of over 2500 funerals, includes additional *Supplementary Index to Knapps Mortuary Funerals*, 42 pages 418 pages, members \$18.00, non-members \$20.00

Knapp Mortuary Funerals 1926-1940, Geraldine Gilman - Records of nearly 2000 individuals from Knapp Funeral Parlors. The records may include birth as well as death dates, place of & cause of death, religious affiliation, attending doctor, clergy, parents & their place of birth 418 pages, members \$18.00, non-members \$20.00

Hamilton Funeral Records 1917-1929, Geraldine Gilman 126 pages, members \$9.00, non-members \$10.00

Camas Funeral Home Records 1912-1943, Mildred Greening Piontek - Over 6000 records 300 pages, members \$18.00, non-members \$20.00

Clark County Death Records, Courthouse, Book One 1891-1903, Colleen Bennett - Names, date of death, sex, age, marital status, residence, place of birth, names and birth places of parents, cause of death & signer of death certificate 29 pagesmembers \$2.70, non-members \$3.00

St. Luke's Parish Records, Lesla Scott - Diaries of Rev. John McCarty, 1853-1868, and Rev. Albert S. Nicholson, 1868-1886. Records of baptisms, confirmations, marriages and burials 65 pagesmembers \$6.75, non-members \$7.50

Index to the Annuals of the Fort Vancouver Historical Society, 1960-1985, Full name index, cross referenced 110 pages, members \$6.75, non-members \$7.50

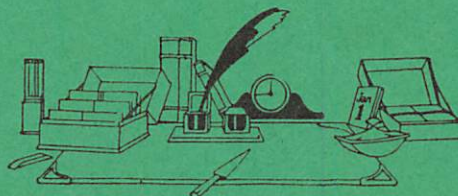
Skamania Co. WA, Births, Deeds & Miscellaneous Records, Daphne Ramsey - births 1893-1926, deeds & miscellaneous records 1855-1894 116 pages, members \$9.00, non-members \$10.00

Skamania County Washington, Cemetery Records, Daphne Ramsey - Includes cemetery records, abandoned graves, burial records and stories that tombstones do not tell 165 pages, members \$13.50, non-members \$15.00

Skamania County Washington, Marriages, 1854 - Jan 1931 (incomplete), Daphne Ramsey Includes abstract of marriage registrations 1893-1920 196 pages, members \$13.50, non-members \$15.00

Skamania County Washington, Census Records - 1860, 1870, 1880, 1885, and 1887, Daphne Ramsey 100 pages, members \$13.50, non-members \$15.00

Diary of Cyrus Shepard, March 4, 1834 - December 20, 1835, Geraldine Gilman - Cyrus Shepard was a minister and teacher at Willamette Mission. He traveled to Oregon with the Jason Lee party 120 pages, members \$9.00, non-members \$10.00



All books are compiled by Clark County Genealogical Society, are printed double sided on 8 1/2" x 11" paper, are indexed, have paper covers and vello-binding unless otherwise noted.

✿ Ordering Information ✿

Postage for first book is \$3.00 with .50 for each additional book. **The postage for Clark County Pioneers and Evergreen Memorial Gardens Cemetery is \$4.00.** Washington residents add 7.6% sales tax. Members of Clark County Genealogical Society receive a 10 % discount, as reflected above, on all C.C.G.S. Publications.

Send your order to the attention of Rose Marie Harshman, Clark County Genealogical Society P.O. Box 2728, Vancouver, WA 98668.

Exchanges? We will gladly exchange our books with your society's on a page for page basis. Contact Rose Marie Harshman for details.

Clark County Genealogical Society Library is located at 1511 Main Street, Vancouver, WA. It is open from 1:00 p.m. to 5:00 p.m. Tuesday through Saturday.



LIVING LIFE MEMBERS

Marilyn J. Anderson - '92
 E. June Andrews - '89
 Mildred Beck - '93
 William Beck - '93
 Veda DeColon - '89
 Elizabeth Ann Feming - '93
 Herbert Feming - '93
 Bette Forgy '93
 Barbara Germann - '89
 Evelyn Greenstreet - honorary
 Jane Germann - '89
 Rose Marie Harshman - '89
 Mary Katschke - '93
 Roy Katschke - '93
 Bertha Krause - '89
 Jo-Ann Lee '93
 Connie Lenzen - '92
 Gerald Lenzen - '92
 Dorothy Person - '89
 Marilyn Shroll - '89
 Philip Thompson - '93
 Sandra Thompson - '93
 Doris Wastradowski - '89
 Sharon Wodtke - '93

FOUNDING PRESIDENT:

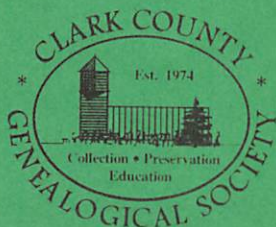
Margaretta Zimmerman
31Aug1911-19Feb1994

CONTRIBUTING MEMBERS

Judy Card (2nd year)

DO YOU THINK
 WE NEED MORE SPACE
 AT OUR
 CCGS RESEARCH LIBRARY?

READ ARTICLE
 ON PAGE 2



Clark County Genealogical Society
 P.O. Box 2728
 Vancouver, WA 98668-2728

ADDRESS CORRECTION REQUESTED

Non-Profit Org.
 U.S. Postage Paid
 Vancouver, WA
 Permit No. 934

70/1299

American-Canadian Genealogical Society
 PO Box 6478
 Manchester, NH 03108-6478