

DEC 01 1994

A
ISSN 0362-0344

TRAIL BREAKERS

VOLUME 21 - No. 1 - FALL 1994



PRICE
\$3.00

CLARK COUNTY
GENEALOGICAL SOCIETY
VANCOUVER, WASHINGTON

TRAIL BREAKERS is published quarterly: FALL (October), WINTER (January), SPRING (March), SUMMER (June) by the Clark County Genealogical Society, P.O. Box 2728, Vancouver, WA 98668

BOARD OF DIRECTORS:

Jerri St. John 887-3766	President
Roy Katschke	Vice-President
Jennifer Warren	Recording Secretary
Mary Katschke	Treasurer
Pat Rose	Ass't Sec.-Treas.
Fred Smith	Immediate Past Pres.

TRAIL BREAKERS STAFF:

Editor:	Jane Germann
Assistant Editor	Barbara Germann
Ancestor Charts:	Roy Katschke
Bible Records, Queries:	Barbara Germann
Book Reports:	Joanne Bortniak
Funeral Home Records:	Gerry Gilman
Surname Editor:	Delillah Knight
Vancouver Newspapers:	Pat Bauer

DUE DATES for material from the individual editors are: August 15, November 15, February 15, and May 15.

The Editor accepts donation of "Articles," "Fill-ins," "How To's," "Biographies," etc. Any material for this may be left in the Editor's File at the CCGS Library and will be greatly appreciated.

Especially needed are articles of "Genealogical Experience." If you have one, call the Editor: This is OUR periodical. Please include information of source if a reprint. *If your submission is available in a word processing format, please let the editor know.*

Neither the CCGS or Editors of the TRAIL BREAKER accepts responsibility for errors of fact or judgement in the material submitted to and printed in the TRAIL BREAKERS. If errors are brought to our attention, we will try to correct them.

The Clark County Genealogical Society (CCGS) is a service organization dedicated to the collection and publication of the heritage of Clark County. CCGS offers assistance to genealogical researchers and family historians.

MEMBERSHIP: Membership is open to anyone interested in the collection and preservation of family and regional history. It includes a subscription to the TRAIL BREAKERS, a DIRECTORY, a nearly monthly NEWSLETTER, and free check-out privileges at the CCGS Library. Membership Chairperson: Sandy Thompson.

DUES: \$15.00 per year for an individual, \$20.00 for joint members (two people, only one publication mailing). Life membership is \$250, joint life (married couples only) is \$310. Contributing membership is \$50.00 or more per year.

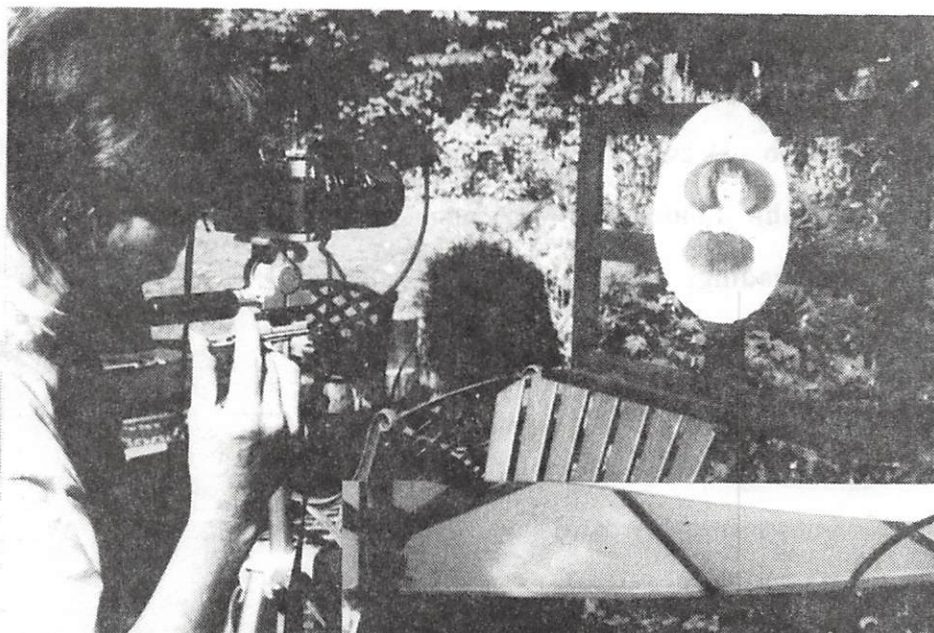
MEETINGS: CCGS 1994-95 general meetings this year: Sep 28, Oct 26, Nov 26, no Dec meeting, Jan 25, Feb 22, Mar 22, Apr 26, May 24, Jun 14. There is beginner instruction or computer interest group prior to meetings. Board meetings are held the third Tuesday. Inside the front cover of the Directory is a list of general, board, and special meetings with times and places. The CCGS Newsletter lists speakers and any changes.

LIBRARY: The Clark County Genealogical Society Library is located in the Fort Vancouver Historical Museum at 1511 Main Street, Vancouver. It is open to members and the public Tuesday through Saturday afternoons from 1:00 until 4:45 p.m. A large selection of supplies and forms are available for purchase. Head Librarian: Doris Wastradowski.

TABLE OF CONTENTS

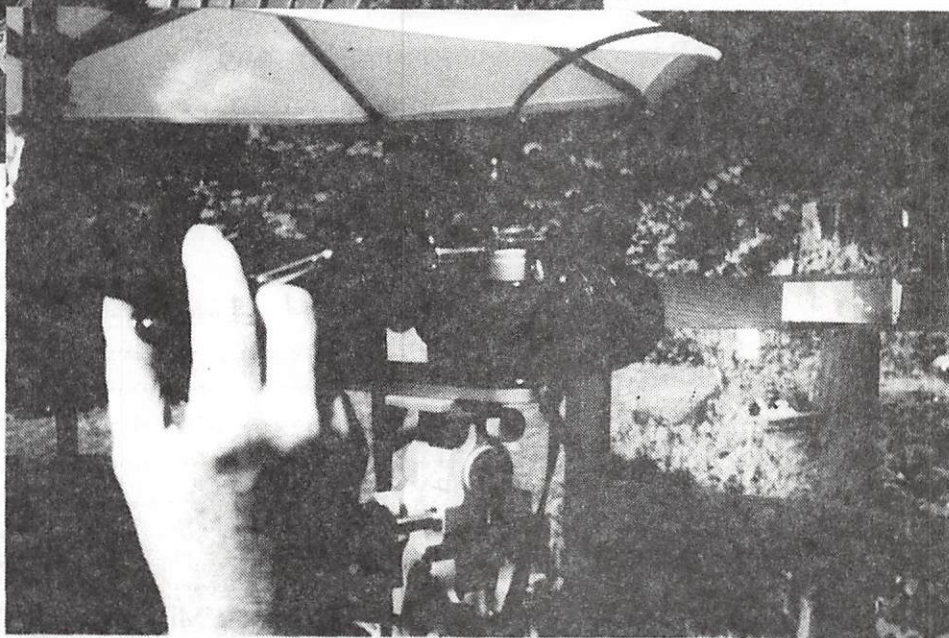
Photographing photographs by Jane Germann with Lorie Okel	3
Photograph Dating by Women's Dress (reprint)	6
The Later Years of Louisa John (Louisa John story concluded) by Lois Kullberg	8
Not your usual Tombstone Readings	10
Knapp Mortuary Records (1941) extracted by Gerry Gilman	11
New books at CCGS by Joanne Bortniak	14
Erie Canal Museum Letter contributed by Virginia Holter	21
Vancouver Register (1868 newspaper) by Pat Bauer	22
Ancestor Charts formatted by Roy Katschke	
Lore (SCHUHART) ALLRED	28
Edward C.W. SCHUTTE, Jr.	28
William Lawson ST. JOHN	29
CLAUDIA (STIFFLER) WADE	29
Marilyn (STODDARD) SHROLL	30
James Willis WARREN	30
Kathlyn Marie WARSOP	31
Marianne Christine YOUNG	31
Verla Jean (HAYES) LEETCH	32
Maryalice (GREGORY) GORDON	33
Surname File by Delillah Knight	34
Mayflower Connections - Judy Rogers & Nadine Mikesell	39
Ancestor Charts Published in Trail Breakers Leads to Other Family Members!	
Erdine Nugent	39
Missouri Exchange Periodical Yields Great Find! Carol Huesser	39
Another Periodical Hugh Success! Fred N. Smith	39
Genealogical Helper Helped! Marge Van Nus	40
CCGS MEMBERS [New & Renewals]	40
Queries	38
Index	41
Clark County Genealogical Society Publications	44

Run-ons and other typographical errors in the insert letter on page 4 of Vol. 20 #4 issue of the Trail Breakers were not part of the original copy supplied by Bob Gordon. We appreciate submissions by CCGS members and regret spell-check was not applied to this section of his submissions. Please let the editor know when a submission is available in a word processing format that could be used for re-formatting a submission to *Trail Breaker* style.



Left:
Lorie Okel demonstrates using a camera on a tripod and an old music stand to hold an old photograph to take reproduction photographs of an old photo in the bright sunlight on her backyard deck.

Right:
Here Lorie uses a remote control to trip the shutter thus avoiding wiggling the camera and blurring the resulting photograph. Even those thumb-nail size photographs can be reproduced by using a variety of lens.



LORIE OKEL DEMONSTRATES TAKING CLOSE-UPS

The subject of taking photographs of photographs came up again at one the CCGS classes taught through the Clark College Program. Lorie Okel was assisting Jane Germann with the beginner's class and when the subject of old faded photographs and how Tymer's can use their expensive cameras to bring out contrast and usually come up with an very good product, Lorie piped in about taking your own photographs -- even with a box camera. It took awhile, but we got together to share information for this article.

CCGS member Del Harris had presented a similar program at the monthly meetings which included a history of photography. [His wife Francis did the Book Reviews for the *Trail Breakers* for many years.] Del also wrote an article "Copying Pictures" for the *Trail Breakers*, Vol. 8, #3, pages 4 & 5.

Jane had tried using her husband's camera and had mixed results, so when she saw the totally awesome results Lorie was getting, it was time to find out the secrets of her success. It took nearly a year for them to get together, but we hope you will find some useful information here for taking your own photographs.

Photographing photographs

by Jane Germann with Lorie Okel

Lorie Okel had a pleasant surprise when a relative who was cleaning out an apartment did not want all "those old pictures" with people who meant nothing to him. He didn't have family to pass them on to. And Lorie could even identify some of the people! So the whole suitcase of photographs became hers! It came time to take photographs of these old ones! The weather was going to cooperate at the same time she had a "spare" time block. She invited Jane Germann over to watch her so they could do this article.

A bright sunny day is the best time for undertaking this project. Natural sunlight has advantages. First of all, it contains a full spectrum of the rays of light so it catches all the colors (even black & white) more accurately. Second, there is less reflected light because "it comes in from all directions" rather than from one or two sources. Lorie showed me a photograph of her grandchildren taken in a studio that shows the reflection of the two main lamps in their eyes when naturally there should be only one reflective spot. But take care to have the photograph in direct sunlight only as long as it takes to do your photographing . . . sunlight can damage photos. If you have a skylight, even that may be better than setting up a spot light. CCGS member Del Harris recommends natural light (even on a cloudy day) by using indirect light coming in from a west window.

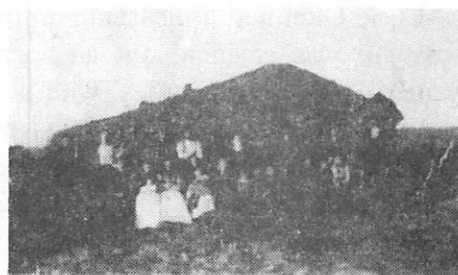
Lorie gathered her supplies together. She has an old wooden music stand that makes a marvelous easel. A paint easel with a piece of cardboard or even one of those plastic Lucite cookbook stands would work. In his talk to our society, Del used the side of the box that he had used to bring his supplies. Lorie made sure the stand was in an area of her deck where walking to adjust the camera would not wiggle the stand.

Nearby she had a table in the shade so she could have camera supplies and photographs near her work area. Before coming out into the sun, she took time to group photos into units of similar size to save time in changing lens or camera distance. When possible, she has a second person work with her as a recorder. This person will use a notebook to register the roll number and enter the photo number with a description (including known names, importance of photo, anything written on the back of the photo, etc.). Sometimes she will even take a photograph of the back if it contains significant information.

If she knows the family members in the photographs, she will keep family group records to help approximate dates or identify people by name. A copy of **"Photograph Dating By Women's Dress"** helps her date the period. [This has been reprinted following this article in this issue.] Lorie also recommends **"Dating Old Photographs"** submitted by Cathy (Dantin) Shannon on page 77 of Louisanna's *Terrebonne Life Line*, Vol. 12 #3 which can be found at our CCGS Library. The article explains types of early photographs: case photograph, daguerreotypes (1839-1854), ambrotype (1854-Civil War), tintype (1860-1870 black backing, 1870-1920 brown coppery backing), gem photos, CDV "carte de visite" (1860-1880), cabinet photographs (1880-1900s) and the dates when they were common which will help date old photographs.

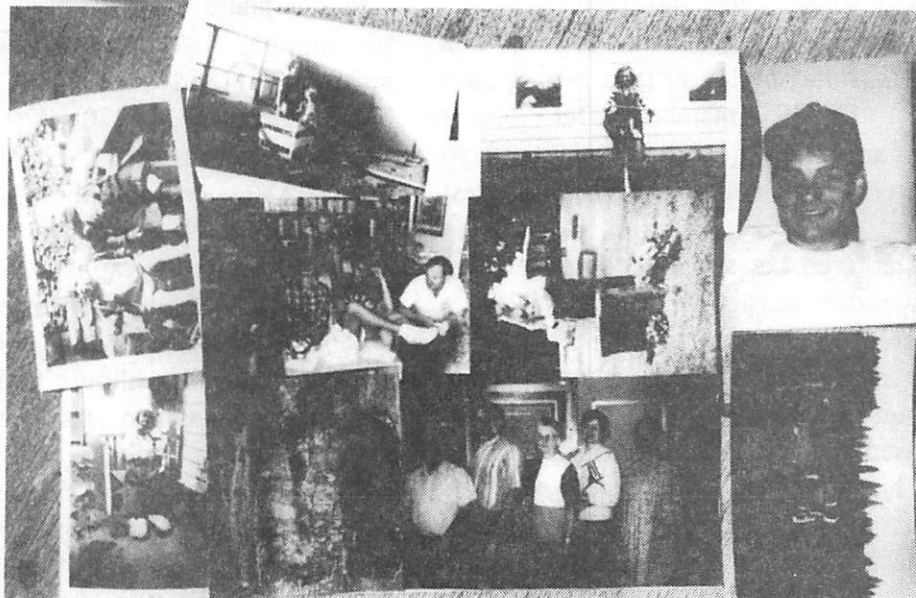
The best film to use is a roll of 24 exposure 400 ASA black and white print film. The faster speed of this film allows taking pictures in less lighting. Kitty Oman was able to use the existing light in a library, using the 400 ASA and a close up lens, to get a very nice reproduction of a photograph of a relative in a book that could not be checked out. It gave her a picture she didn't know any other way to acquire. The roll of 24 is

**"IF YOUR CHOICE IS NO PHOTO OR ONE WITH YOUR BOX CAMERA,
THE BOX CAMERA PHOTO WINS HANDS DOWN!"**



With a "box camera" you can get good results with larger photographs. The two photos above were taken with a Cannon Sure Shot and came out clear. Enlargements may be grainy.

Below are a group of snap shots also taken with the Sure Shot. They remain clear as long as the focal distance is about two or three feet. A close up try yeilds an expected out of focus result. Still worth the effort.



usually more convenient than the 12 or 36 exposure size. If you are traveling, remember to stock up on your black and white film as it is not readily available. If you want to make a large enlargement, you may want to consider using 100 ASA for a finer grain product. Some of the newer photocopy machines do a good job -- especially the laser ones.

The camera Lorie uses is a single reflex lens which means that when you look into the view finder you see exactly what the camera does. (Jane's little Cannon Sure Shot has a view finder above the lens and she gets 'almost what the lens sees.') Her Cannon AEI is automatic so Lorie doesn't need to adjust the f-stops and she has the capability to use a variety of lens. A tripod holds the camera at the same level as the subject photos and allows her to hold adjustments in distance and focus more readily. A remote release allows the shutter to be tripped without moving the camera.

Her camera equipment is stored in a case with foam insert so her various lens are protected and easily accessed. Sometimes a telephoto lens used several feet back gets the best results. One lens with a macro/micro combination offers flexibility. Her favorite is her 50 mm or wide-angle lens which allows those group photos to be taken more easily. Extension tubes increase the flexibility of lens. For example, for those little tiny pictures about the size of a thumb print, Lorie will use the extension tube, a mico lens and her 50 mm lens in combination.

Removable transparent tape is used to secure the photo to the stand or box. It is different from the clear or transparent kind in that it is easy to remove the tape. Even then, take care with those old photos. Some of the paper is so fragile that it will peel off with even this gentle tape. If your drugstore or grocery store does not carry it, try an office supply house.

Lorie uses a brush to remove lint from the lens so she can get the best photo possible. After choosing a lens, she will frame her photo through the view finder, adjusting the camera to get only the picture. Sometimes she will use a template cut from back paper to block out unwanted parts from a scene. For example, she may want to focus in on

one person from a group and will use the template to frame the wanted person. Other times she will use black paper to extend sides of a photo so an odd shaped photo will stand out (like the old square ones in the rectangular shape of her view finder).

Her camera has a dot on the bottom so she can rewind a partly used roll to use later. She will note the frame number and attach it to the roll so when she re-loads the film she can remember where she left off. She will also advance the film a couple of frames to avoid double exposure. Not all cameras have this capability -- check your manual.

Lorie has organized her collection of photographs. Using photograph albums, she used a sticky label to note the roll and photo numbers and identifying remarks.

Do you have only a box camera? It may be worth the price of a roll of film and developing to see what you can do with it. Jane used her Cannon Sure Shot to see what she could do. Using 100 ASA color film that was already in it, she took a group of small photos, placed them on the sidewalk in bright sun, bent over and clicked the camera. The manual recommended the nearest focal distance as eighteen inches. Anything I took closer than that turned out blurry. The larger pictures which could be taken at about three feet were most successful. A close up of a person was better than a group photo. With a group of smaller photos, it helped to tape or glue them to a piece of paper so they stayed flat. The natural curl in a photo caused distortions and shadows. Conclusion: The box camera caught more than I thought it would: even though they were not the quality available with the more expensive cameras, I had some success. The proverb "a bird in the hand is worth more than two in the bush" applies here. If your choice is no photo or one with your box camera, the box camera photo wins hands down. You may even want to have a relative hold the photo to give it a bit of significance.

Editor's note: See Del Harris' article on pages 4 & 5 of Summer 1982, Vol. VIII, No. 4 issue of the *Trail Breakers*. Do you have some successful hints to aid others in taking their photographs? Or maybe somethings to avoid?

Reprinted from Winter 1987, Vol XIII, No. 2 page 17 of the Trail Breakers.

PHOTOGRAPH DATING BY WOMEN'S DRESS

Identifying the time period in which a photograph was taken can often be achieved by studying women's dress. The following are guidelines which can be used to do this. Of course, these are only guidelines and will often be varied from. Use the following code with the illustrations:

- | | | | |
|--------------|-----------------|--------------|---------------------|
| 1 Hair Style | 3 Shoulder-line | 5 Waist-line | 7 Other Information |
| 2 Collar | 4 Sleeves | 6 Skirt | |



1848 - 1853

- 1 Center Part
- 2 No Collar
- 3 Very Low
- 4 Very Tight
- 5 Low, Pointed
- 6 Soft, Full
- 7 Bonnets Not Uncommon

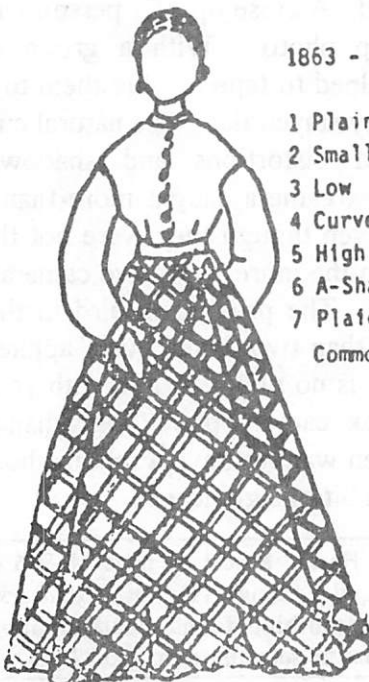
1854 - 1862

- 1 Center Part
- 2 Small
- 3 Very Low
- 4 Wide
- 5 Round
- 6 Very Full
- 7 Front Waist Gathered, Over Hoops



1871 - 1876

- 1 Fancy, High
- 2 Added Trim
- 3 Somewhat Low
- 4 Large Cuffs
- 5 High, Jacket
- 6 Bunched Bustle
- 7 Much Jewelry, Elaborate Dress



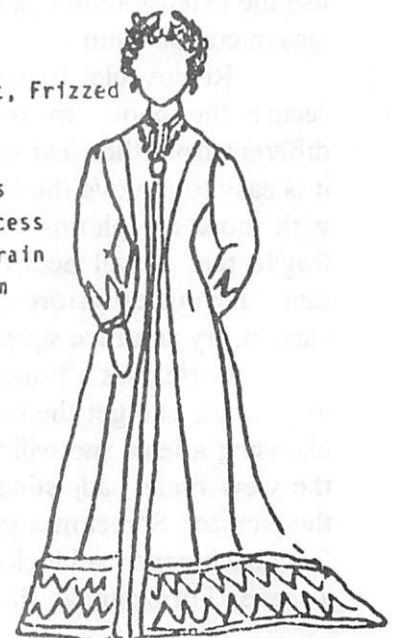
1863 - 1870

- 1 Plain, Center Part
- 2 Small
- 3 Low
- 4 Curved
- 5 High, Round
- 6 A-Shape, Flat
- 7 Plaid Fabric Very Common



1877 - 1881

- 1 Center Part, Frizzed
- 2 Low
- 3 Normal
- 4 Large Cuffs
- 5 Long; Princess
- 6 A-shape; Train
- 7 Fabric Trim Often Big



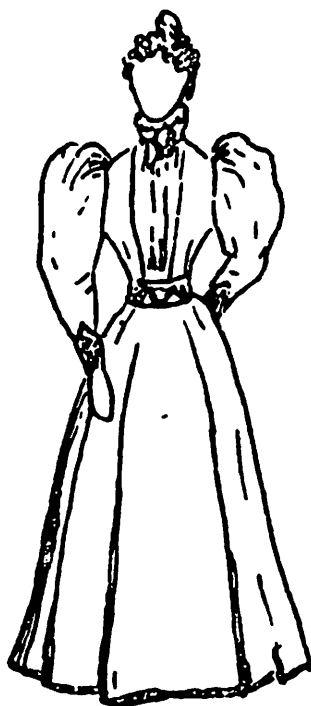


1882 - 1888

- 1 Plain With Bangs
- 2 Medium
- 3 Very High
- 4 Very Tight, Short
- 5 Pointed; Jacket
- 6 Draped, Bustle
- 7 Two Fabrics Often Used, Often Heavy; Skirt Pleated

1889 - 1893

- 1 Plain Or Frizzed
- 2 Medium High
- 3 Very High
- 4 "Kick-ups"
- 5 Jacket-style
- 6 Plain, Round
- 7 Generally Simple Overall



1894 - 1898

- 1 Simple, Frizzed
- 2 High
- 3 High, Wide
- 4 Very Full At Top
- 5 Round, Tight
- 6 Plain, A-shape
- 7 Tailored Style, Shirtwaists Come In



1899 - 1906

- 1 Pompadours
- 2 Very High
- 3 Normal
- 4 Loose At Cuff
- 5 Low, Swayed
- 6 Flared, Gored
- 7 Light Fabrics, White Common



1907 - 1913

- 1 Wide, Soft
- 2 Medium To High
- 3 Normal
- 4 Straight
- 5 Normal To High
- 6 Slim, Plain
- 7 Short Or Long Sleeves; White Very Popular

The Later Years of Louisa John

By Lois Kullberg, ©1994, used by permission
Continued from Vol. 20, No.4

Louisa's heart was with her extended family in Washington Territory. John Shaw Bozarth's wife, Asenath Leuelling Bozarth, mother of his ten children, died on November 30, 1874 at the age of 39 years. Sometime before 1878 Louisa returned to her home and on August 8, 1878 she married John Shaw Bozarth at Pekin in Clark County.

The Lewis River Grange #47 was instituted February 1, 1879 by J. S. Bozarth and the list of officers included several Bozarth and Millards, who were Bozarth relatives. In fact, the whole community around Lewis River and Woodland must have been distantly related. By this time four Bozarth brothers had married four John sisters. They were related to the Martins, the Gardners, the Strongs, the Millards, the Caples, the Goodwins, the Springers, the Gilsens, the Maxons, the Van Bebbers and more. Besides this, there were family ties to the Lewellings, Williams and Meeks in Clackamas County, Oregon.

On May 13, 1880 Louisa's sister, Rachel Christina Legg died. *The Vancouver Independent* of May 27, 1880 had an article called "A Hard Trip," which tells us something about Louisa's life:

"On Saturday, May 16th, a telegram was received at Pekin, announcing the death of a beloved sister, Mrs. C. R. Legg, living on Columbia Slough. Shortly after the telegram was delivered a spring wagon with a spirited span of horses was obtained to convey the sisters of the deceased to her residence.

"At two o'clock we left Pekin; nothing wothy (sic) of note happened until we had traveled 8 or 10 miles, when suddenly we came in contact with a large tree which had been blown across the road during the recent wind storm. There being no possible way of getting over it, Mr. Andrew T. Millard, the driver, was obliged to mount one of the horses and ride three miles ahead to get an ax. The first place he came to was from all appearances a bachelor's. Mr. Millard was obliged to break open the gentleman's cabin in order to get the ax. On our return we left the ax, thanking the gentleman for its use, hoping he will hold no ill will against us for our trespassing.

"Before Vancouver was reached several trees had to be cut, which made it a hard trip on the part of Mr. Millard. While we were passing Mr. Marble's we were congratulating ourselves on our good fortune in not being thrown from the wagon in traveling over such a rough road. No sooner had we finished our congratulations when the forward wheels of the wagon suddenly rising and the hind ones lowering threw Mrs.

L. A. [Louisa] and C.A. Bozarth [Louisa's sister Cynthia] Bozarth, the occupants of the hind seat, backward, lighting in the mud and water, they running a narrow risk of losing their lives.

"Arriving at Vancouver 9 o'clock in the evening we were met with a warm reception by Mrs. Maxon, [Louisa's sister Mary Jane] who gave us warm clothing and a warm supper. Sunday morning we arrived at Mrs. Legg's about 10 o'clock. The funeral sermon was preached by Rev. Mr. Denison, of Portland, at 10:30 o'clock after which all went to the grave, which was attended by nearly 400 people. Mrs. Legg leaves a family of five children, a devoted husband and many friends to lament her loss."

On August 28, 1879 another newspaper article tells us that Louisa's husband, John Shaw Bozarth, was kicked by a horse back on June 5th, but had regained his feet by assistance of crutches after being confined to his bed for sixty-five days. The same issue of the paper announced that Mr. J. S. Bozarth has harvested 85 bushels of wheat to the acre from his property. He also had oats on his property measuring six feet one inch in height, the heads being 25 inches in length. This indicates they were prosperous, but it wasn't to last much longer. He died on March 13, 1882. Louisa was only married to John Shaw Bozarth for two and a half years. Even though he left several minor children no mention is made of her caring for them but she retained the name of Bozarth for the rest of her life.

In February, 1884 the Mormon missionary, David M. Stuart made another trip to the northwest. Of this second mission to Oregon and Washington he wrote that when he reached Baker City, Oregon he stayed at the International Hotel. There he inquired about his old friend, Louisa John Bozarth. "I was directed by the Spirit to east Portland Post Office and inquired of the Post Mistress there, 'Do you know Louisa John Bozarth?' He described her. 'Yes, I do.

She lives at her brother-in-law's home on the Columbia River bottoms six or eight miles from east Portland. His name is William Legg. You may find him at the Latimer store where he trades.'

"David went there and found him as she had directed. But he was unfriendly and cold though he took David in his wagon to his home where Louisa greeted him with a glad heart. The next morning David returned to Portland with Mr. Legg because he was afraid the neighbors would find out a Mormon Elder had been in his home. Before he left the Legg

home Louisa gave him a twenty dollar bill 'to help with the Lord's work.'"

"David thanked her and went direct to her brother's home by steamboat and stayed at Pekin, on the Lewis River, in Cowlette County near Woodland. In that locality another sister, Elizabeth Bolan, lived. She received David kindly and he spent his fifty-ninth birthday there. On the tenth of March, her son, Summeral, took David to Woodland to see the Bozarth brothers. David stayed overnight at Christopher Bozarth's home. His wife, Roday, was friendly to the Mormons and she called all her neighbors. David preached on the first principles of the Gospel in great plainness to those assembled. On March eleventh Chris Bozarth went to Portland. David [then] went with Squire J. Bozarth who lived about a mile farther up the Lewis River. The Squire's wife, Cynthia, was another of Louisa's sisters. While there, David talked to a crowded audience which met in the Woodland Schoolhouse." Stuart did not give the results of this meeting. Peg Conrad, a descendant of Rhoda Ruth says her grandmother was the first of the family to be baptized into the church.

We don't know how much Louisa told to her family, especially her sisters, about a trip she made to Utah in 1882, but we learn from David M. Stuart what took place two years before this trip to Oregon.

"...Twenty five years have passed away since then. [His first mission to Oregon] I have traveled far and wide through the United States and in foreign lands...but my experience on the mission to Oregon is the most interesting one I ever had." He had since married Sarah Elizabeth Keyes and a plural wife, Susan Douglas Airmet.

"I was greatly surprised at meeting Sister Louisa A. John in Ogden City (Utah) on the 18th of August, 1882, after a lapse of many years. She had traveled alone from her old home. Her children, one by one, passed away in death, and last of all her husband died, and left her free to come to the home of the Saints. She could find no one of all her father's house to come with her, and the Saints of Washington Territory had lost the spirit of the work, so she had come alone to do work for herself and her dead in the House of the Lord.

"On meeting her she said, 'Brother Stuart, here I am according to your word that I should yet come to Zion, if faithful. I have no friend but you among the Saints; help me to do my work, tell me how to commence.'"

"...She did as required and received her blessings accordingly. She visited a short time here and then returned to her old home where she is now setting up her business with a view of returning to Utah to spend the remainder of her days in the service of the Lord."¹

In a later history Stuart wrote of this event. "She had lost all confidence in her mate and did not want to be sealed to him. 'He's gotten lower than the Devil and his angels. I will never be happy unless I can comply with the requirements of our Lord's celestial kingdom. And I know that in order to do that, I must be sealed to one who holds the Holy Melchizedek Priesthood. So if you will have me in your household for the eternal celestial kingdom, I will do all I can to be a helpmate to you and your Sarah for I know she will be a queen beside you.'"

Stuart told Sarah, "What could I say in the face of such pleading? She wants only to partake of the blessings of our Lord's highest kingdom and I could not refuse. I would have never forgiven myself had I refused and she had never attained her place there." Sarah replied, "Of course you could not refuse, you being you, your arms are as big as your heart so your household will have to be that big, too."

The records for the Endowment House show that she was sealed 31 August 1882 to David M. Stuart. The sealing was performed by Daniel H. Wells. Witnesses were G. Smith and J. Smith. Logan Temple records also support this event. In work Louisa instigated on behalf of her deceased brothers, David Marshall Stuart served as proxy and is listed as a brother-in-law to them. As heir, she gave her own name as Louisa John Stuart.

Louisa never went to live in Utah. Perhaps this was because Stuart died at Ogden, Utah on August 20, 1898, just six years later. She wrote in her manuscript, "I came back to Vancouver. I had some property there. I built a fine boarding house in the Building and Lone [sic] Association. I was 60 years old at the time [1886]. I put myself in debt 35 hundred dollars and it nearly broke me up, but I filled it with boarders, ran it for 12 years, have sold out now and have saved a few dollars for my old age."²

Louisa Bozarth is listed in the Portland city directory of 1905 as living at 480 Columbia Street. She was one of the early members of the Portland Branch of the Church of Jesus Christ of Latter-day Saints, which was formed in 1898 at the home of the first branch president, Jens C. Westergaard. He remembers her a "venerable old lady who deserves special mention."³ Westergaard referred to Louisa as "the queen of the Northwest pioneer society and presided at their annual gatherings." She was indeed a member of the Sons and Daughters of the Oregon Pioneers.

She was best described by Stuart when he returned to Lewis River in 1857: "She was a beautiful woman and the flash of her brown eyes when she described how she had held her ground made my heart pound with admiration. I had admired her always, and though she never once gave me cause to think she might one day love me, but was loyal to her mate and her children. It was not until her husband

had long since been untrue to her and she was anxious to be sealed in the celestial covenant of marriage that I took her as one of my plural wives."⁴

Louisa used the name of Bozarth for the rest of her life. She died June 20, 1911. Even in death persecution followed her. William B. Smart wrote, "Her death was as silent as her life. Bigotry and persecution followed her to her grave. Mormon hatred was still strong enough that the Church, to avoid disturbance, did not attend her funeral service. She was buried in Woodland, Washington in semi-secrecy, and it was not for days that the church officials could visit the site to dedicate her grave under the shelter of night."⁵

She is buried on a knoll at the I.O.O.F. cemetery in Woodland, Washington, just to the right of John Shaw Bozarth. Bozarth's first wife, Asenath is buried on his left. It looks more like John Shaw Bozarth was the polygamist, not David M. Stuart.

Her strength to resist persecution and her devotion to the principles she believed in set apart Louisa Ann John Springer, Ingram, Bozarth, Stuart as a remarkable woman. She deserves to be remembered in Washington State history, and in the history of The Church of Jesus Christ of Latter-day Saints, no matter what name she is called by.

~~~~~  
Lois Kullberg is a member of CCGS and lives at 12714 NE 13th Ave., Vancouver, WA 98682. This 1994 copyrighted article was printed with her permission. This series has appeared in several recent issues of the *Trail Breakers*.

1. Stuart, David M., "My Mission to Oregon," *Juvenile Instructor* Vol. 18, pp. 293, 294, 309, 310, 326, on film in Church Historian's Office - Andrew Jensen's Comprehensive History of the Church, Northwestern States Mission, 26 Aug 1858 - D.M. Stuart letters.

2. Bozarth, Louisa John, Springer (and Ingram) - MS #1508, Oregon Historical Society, Portland.

3. Westergaard, Jens C., *Synopsis Life History of Jens C. hristian Westergaard*, © 1946 by author.

4. Stuart, David M. II, *Pioneer Missionary*, published in 1988 by Family History Publishers, Bountiful, UT taken from missionary journals.

5. Daughters of the Utah Pioneers, *Hidden Treasures of Pioneer History*, Vol. 1, p. 286.

## NOT YOUR USUAL TOMBSTONE READING!

"Here I lie without my head. I was a simple shepherd. A bad Hungarian came and shot me in the head and severed it from my body. May he be damned for all eternity." So reads the stone of Ian Sauliuc who is buried in Sapinta, Romania's 'merry cemetery.' So unique is this cemetery because of its remarkable stones and inscriptions that it has been designated as a United Nations cultural landmark.

The story of the rare cemetery appeared in the Jun 27, 1994, *Wall Street Journal*, on page 1, continuing on page A4, column 5 in a column written by Roger Throw. [Rose Marie Harshman dropped this in the Trail Breakers' file to share with you.] Throw reports about the cross makers who carved elegant stones and often took liberties in relating inscriptions when illiterate relatives of the deceased were consulted. Dumitru Pop who took over in 1977 after the death of Stan Ion Patras is more honest now that most of the villagers can read.

Another deceased carries on the cemetery conversations: "During my life, I liked many men, I loved to drink and have a good time with handsome men by my side. But you, Darvai, my husband, as long as you live you'll never find another wife like me."

"I was drunk and walked into the woods and had an accident. The logs fell on top of me. To you who still live, be careful and don't do what I did, is carved on a lumberman's stone. Dumitru Holdis warns, 'Schnapps is pure poison that brings pain and tears. Death came and stepped on me. To you who love schnapps as I did, it will also happen to you.'

Several of you who have read tombstones have come across some really good ones. You'd enjoy reading the article in full. The original copy will be in the *Trail Breakers*' file for awhile. Ask a librarian to fetch it for you. In fact, I know some tombstone readers who will not have "Together forever" on their stone -- not because they don't appreciate their spouse, but because they had to record it on too many readings. (Yes, they did "T.F." for short, but it's way too common for them.) I wonder if Kitty Oman kept tally of the number of times it appears in the Evergreen Memorial Cemetery Records she continues to compile?????





## KNAPP MORTUARY RECORDS

Extracted by CCGS member Gerry Gilman, the Knapp-Gunderson-Hamilton Funeral Home records were first printed in the *Trail Breakers* Winter 1989/Vol. 16 #2 issue. The history of the funeral home has been printed in the first volume of the Knapp Mortuary Funerals, the Hamilton Funeral Home Records, and the Hamilton Family history was printed in Vol. 20 No. 2 of the *Trail Breakers*. In 1960 the Knapp Mortuary merged with Mylan-Gunderson-Lanier and is presently under the Hamilton-Mylan-Knapp-Gunderson Funeral Home, located on the Corner of 11th and Columbia Streets in Vancouver, WA. Three volumes have now been printed: *Knapp Mortuary Funerals 1907-1925*, *Knapp Mortuary Funerals 1926-1940*, and *Hamilton Funeral Records 1927-1929*. See the book list at the back of the *Trail Breakers*.

### 1941

#### NICHOLS, SALLY WHITE

b. 8/16/1843 [Waterford], Erie County, Pennsylvania, d. 1/1/1941, age 97y 4m 15d, [widow of Edward John Nichols (5/9/1838-10/23/1917 born in Pennsylvania died of heart failure, son of John Nichols and Bynna Shattuck from Wales)], housewife, Protestant, lived with [son John Nichols] at Rt. #3 Box 170 Vancouver, Clark County, Washington [Fair Acres area], - had lived in the State of Washington for 50 years, died at home of terminal bronchial pneumonia and senility attended by Dr. Steffan of Ridgefield, funeral 1/4/1941 (Saturday) 2 PM at Knapp Chapel with Reverend G. Walter Givens of Vancouver, buried at Sara Union Cemetery (has marker). [Also buried in the family plot and have markers are their children Harriet Adeline (5/31/1866-1958), John Colfax (3/31/1868-6/12/1942) and Kenneth Lyle Nichols (1/11/1885-12/3/1907). They had a total of nine children. Son John was married to Ida May LaBelle, Charles was married to Ella A. Spurgeon and William Nichols]. Charged to and ordered by son Charles White Nichols of Monrovia, Los Angeles County, California. Parents were Edson White and Polly McWattles both born in Pennsylvania.

#### SCOTTON, WILLIAM EDWIN

b. 12/10/1861 Indiana, d. 1/5/1941, age 79y 0m 25d, married to Vietta B. Scotton [1869-1946 has marker next to husband], farmer, Protestant, lived at Rt. #3 Box 85 Vancouver, Clark County, Washington - had lived in the State of Washington for 6 years, died at home of apparently natural causes attended by Dr. Cecil Fargher of Vancouver, funeral 1/8/1941 (Wednesday) 2 PM at Knapp Chapel with Reverend Dr. O.C. Wright of Portland, buried at Park Hill Cemetery A 28-1 (has marker). Ordered by and charged to son Edwin Scotton of Seattle, Washington. Parents were Edwin Scotton and Mary Ratcliff both born in England.

#### LINDH, ETHEL EVA

b. 11/9/1893 Cedar Mill, Washington County, Oregon, d. 1/10/1941, age 47y 2m 1d, married to Levi Lindh [1889-1961 has marker next to wife], housewife, Protestant, lived at Rt. #5

Box 172 Battle Ground, Clark County, Washington, had resided in the state for 6 years, died at St. Joseph Hospital in Vancouver of atypical pneumonia attended by Dr. Henry Skinner of Battle Ground, funeral 1/13/1941 (Monday) 1 PM at Knapp Chapel with Reverend Arthur R. Hodge of Vancouver, buried at Park Hill Cemetery C 441-5 (has marker). Ordered by and charged to husband Levi Lindh. Parents were Isaac B. Everson born in Hillsboro, Washington County, Oregon and Lucinda Millar born in Canada.

#### SPURGEON, LEO CLYDE

b. 4/7/1914 Vancouver, Clark County, Washington, d. 1/12/1941, age 26y 9m 5d, single, cement worker at the Alcoa Plant, Protestant, lived with parents at Rt. #3 Box 34 Vancouver, Clark County, Washington - had lived in the State of Washington all his life, died at St. Joseph Hospital of bilateral pneumonia-thorax and punctured lung attended by Dr. Leslie L. Nunn of Vancouver, funeral 1/15/1941 (Wednesday) 2 PM at Knapp Chapel with Reverend Fred Taylor of Vancouver, buried at Park Hill Cemetery C 439-3 (has marker). Ordered by and charged to father John Randolph Spurgeon. Parents were John [Randolph] Spurgeon [11/9/1882] Vancouver, Clark County, Washington- [11/26/1965 (son of Mathias Spurgeon 4/22/1838-3/11/1918 and Nancy Olive Dillon buried at Vancouver City Cemetery (daughter of Jeremiah Dillon and Roxy Ann Brooks m. (2) John Cramer buried at Wilson Bridge Cemetery) and grandson Elias Spurgeon and Jane Likens)], and [married 5/15/1906 in Vancouver] Julia A. Scott born at La Center, Clark County, Washington.

#### BROWNE, ALICE MAY

b. 1/27/1877 Port Townsend, Clallam County, Washington, d. 1/13/1941, age 63y 11m 16d, widow, lived at 813 E. 26th St. Vancouver Clark County, Washington - had resided in the state for 60 years,, housewife, Protestant, died at home of metastasis - carcinoma of the right breast attended by Dr. Herbert Lieser of Vancouver, funeral 1/15/1941 (Wednesday) 10 AM at Knapp Chapel with Reverend Fred C. Taylor of Vancouver, buried at Rose City Cemetery in Portland, Oregon.

Sons were Fred, John, Richard Browne and daughter was Mrs. Helen Spragg. Charged to Richard Browne and Helen Spragg of Vancouver, Washington. Parents were William Pancorst and Jenny Perry born in Fredricksburg, Stafford County, Virginia.

#### **LUDEMAN, ALBERT**

b. 5/29/1882 Mt. Clemens, Macomb County, Michigan, d. 1/23/1941, age 58y 7m 24d, married to Ella Ludeman [2/4/1887-7/10/1943 has marker #843 beside husband] retired soldier - Master Sergeant of the U.S. Army, Protestant, lived at 2322 E. 14th St., Vancouver, Clark County, Washington - had lived in the State of Washington for 15 years, died at home of lobar pneumonia and influenza bronchitis attended by Dr. Herbert Lieser of Vancouver, funeral 1/27/1941 (Monday) 2 PM at Knapp Chapel with Reverend Paul Kunzman of Vancouver, buried at Post Military Cemetery #842 (has marker). [A daughter Luella Jean Ludeman (5/6/1929-1/30/1929 age 8m 24d is buried in Plot #843)] Ordered by and charged to wife Ella Ludeman and the Veterans Administration. Parents were Charles Ludeman and Sara .... both born in Germany.

#### **AXFORD, CLARENCE HENRY**

b. 6/6/1858 Iowa, d. 1/28/1941, age 82y 7m 22d, widower of Edith May Axford [1867-4/7/1939 born in Iowa died of brights disease, has marker], farmer, Protestant, lived at Rt. #1 Box #287 Vancouver, Clark County, Washington - had resided in the state for 26 years, died at home of a congestive heart failure and chronic myocarditis and senility attended by Dr. W.C. Clark of Battle Ground, funeral 1/31/1941 (Friday) 2 PM at Knapp Chapel with Reverend C.C. James of Battle Ground, buried at Park Hill Cemetery C 170-5. Ordered by and charged to D.C. Axford of Oregon City, Oregon. Parents were Henry Axford born in England and Rachael Dunlap born in Ohio.

#### **MAXWELL, SANFORD LAFAYETTE**

b. 10/18/1865 Mason County, Illinois, d. 1/28/1941, age 76y 3m 10d, married to Anna Maxwell, farmer, Protestant, lived at 2405 Lost Lane Vancouver, Clark County, Washington, died at home of a cerebral thrombosis and auricular fibrillation at the Clark County General Hospital in Vancouver attended by Dr. George Johnson of the County Hospital, funeral 1/31/1941 (Friday) 10:30 AM at Knapp Chapel with Reverend Fred Taylor of Vancouver, buried at Park Hill Cemetery I 25-1 (has marker). Ordered by wife Anna Maxwell. Charged to State of Washington Welfare at Olympia. Parents were .....Maxwell born in Shoneytown, Illinois and Emeline Martin born in Greensburg, Indiana.

#### **KENDRICK, ROBERT O.**

b. 11/6/1921 [Wilsonville, Shelby County], Alabama, d. 1/31/1941, age 19y 1m 25d, single, white CCC enrollee with the United States Government, home address was Wilsonville, Alabama, died at the Vancouver Post Hospital in Vancouver, Clark County, Washington of a cerebral hemorrhage caused by

a brain tumor attended by Dr. N.A. Myll of the Vancouver Post Hospital. Remains were shipped 2/1/1941 for funeral and burial at Wilsonville, Alabama. Charged to the U.S. Government CCC contract U.S. Army Finance Officer. Parents were Robert E. Kendrick born in Wilsonville, Shelby County, Alabama, mother unknown.

#### **CASS, WILLIAM EDWIN DR.**

b. 8/5/1861 Ohio, d. 2/1/1941, age 79y 5m 26d, married to Kathryn Mitchell Cass, retired US Army surgeon and active prominent Vancouver doctor and surgeon, Protestant, lived at 1110 Esther St., Vancouver, Clark County, Washington, died at the Veterans Hospital in Portland, Multnomah County, Oregon of a coronary arteriosclerosis and hypostatic pneumonia attended by Dr. Paul Carter of Portland, funeral 2/4/1941 (Tuesday) 2 PM at Knapp Chapel with Reverend Roy Parcel of Vancouver, buried at Vancouver City Cemetery NW 180-1 Line 3 (has marker. Note: His wife Kathryn is not buried beside him). Ordered by wife Kathryn Cass. Charged to wife and Veterans Administration. Parents were Daniel Cass and Amanda Berm both born in Ohio.

#### **ALLEN, GEORGE SEYMOUR**

b. 11/10/1874 [Monroe City, Monroe County], Missouri [note: Reference: "A Salute to The Clark County Pioneers by The Clark County Genealogical Society p 97 has his birth date 1873), d. 2/7/1941, age 66y 2m 27d, married 2/8/1893 at Fisher, Clark County, Washington (Camas area) to] Emma Mary [Kruckman (1875-1960 has marker for the family she was the daughter of Gustav Kruckman and Catherine Harrington), storekeeper [at Fisher, had built the cement piers for the Bridge of The Gods which crosses the Columbia River joining Skamania County Washington and Cascade Locks, Hood River County, Oregon,] Protestant, lived at Rt. #1 Fisher, Washington - had lived in the State of Washington for 58 years, died at St. Joseph Hospital in Vancouver, Clark County, Washington of chronic myocarditis an acute exacerbation and chronic nephritis attended by Dr. Herbert Lieser of Vancouver, funeral 2/10/1941 (Monday) 2 PM at Knapp Chapel with Reverend George L. Polk of Camas, buried at Fisher Cemetery [#76, has a family marker, also buried in the plot are his mother and father, Charles Merritt Allen (10/20/1872-7/21/1949)]. Ordered by and charged to wife Emma Allen. Parents were George James Allen [ 3/27/1850-] Michigan [1/11/1920 the son of Merritt Allen and Mary Lankford he married 7/4/1870 at Hannibal, Missouri Mary] Loretta Cook [9/14/1854-2/18/1912 born in Vernon, Trumbull County,] Ohio [daughter Seymour Samuel Cook and Sarah R. Roberts].

#### **MATHER, GEORGE WASHINGTON**

b. 8/26/1857 Northampton, Hampshire County, Massachusetts, d. 2/11/1941, age 83y 5m 15d, married, retired painter, Christian Science, lived at 3204 "K" St. Vancouver, Clark County, Washington -had lived in the State of Washington for 51 years, died at Sheldons Convalescent Home in Vancouver,



of uremia with infection and urinary retention attended by Dr. R.W. Armstrong of Vancouver, funeral 2/13/1941 (Thursday) 2 PM at Knapp Chapel with Christian Science Reader Mr. Roy weeks of Vancouver, buried at Park Hill Cemetery ID 168-1 (has marker). Ordered by and charged to son Edward Charles Mather at home [1888-1944 buried at Park Hill Cemetery Sec. E]. Parents were Samuel Mather born Northhampton, Massachuttes and Rosana Hall born in Westhampton, Hampshire County, Massachuttes.

#### **ALBRIGHT, SADIE E.**

b. 1882 Washington, d. 2/15/1941, age 60y 4m, died at San Rafael, Marin County, California in an automobile accident, remains were sent 2/19/1941 by Kerton Mortuary to Knapp Funeral Chapel for a graveside burial 2/20/1941 (Thursday) with Reverend W. Aldrich at Park Hill Cemetery (has marker). No other details. Parents were not listed.

#### **MINKLER, FLORENCE**

b. 2/12/1864 Algona, [Kossuth County], Iowa, d. 2/20/1941, age 77y 0m 8d, widow of Morris G. Minkler [1851-1928 has marker], housewife, Protestant, lived at 1906 Columbia St. Vancouver, Clark County, Washington - had lived in the State for 31 years, died at home of a cerebral hemorrhage and a stroke attended by Dr. Henry Frewing of Vancouver, funeral 2/24/1941 (Monday) 2 PM at Knapp Chapel with Reverend G.E. McGarvey of Portland, buried at Park Hill Cemetery A 140-5 (has marker). Ordered by sons and daughters. Charged to Erma Minkler at home. Parents were Orange Minkler born in Ohio and Betsy Ann Hill born in Iowa.

#### **KUHNHAUSEN, EMMA TERESA**

b. 5/5/1872 Germany, d. 3/2/1941, age 68y 9m 27d, widow, housewife, Protestant, lived at Glenwood, Washington - had lived in the state for 5 years, died at 3507 "Y" Street of a coronary embolus and cancer of the right breast attended by Dr. Herbert C. Lieser of Vancouver, funeral 3/6/1941 (Thursday) 2 PM at the Glenwood Presbyterian Church with Reverend B.J. Fike of Glenwood, buried at Mt. Adams Cemetery Glenwood, WA. Ordered by and charged to son Herman F. Kuhnhausen of Glenwood. Parents were Edward Wahl and Johanna Dorn both born in Glenwood.

#### **FRANTZ, ALBERT JAMES**

b. 9/20/1867 Springfield, Clark County, Ohio, d. 3/6/1941, age 73y 5m 16d, married, retired laborer, Protestant, lived at 3206 Watson Ave., Vancouver, Clark County, Washington - had lived in the State for 15 years, died at Clark County General Hospital of pneumonia attended by Dr. George Johnson, funeral 3/8/1941 (Saturday) 2 PM at Knapp Chapel with Reverend G. Walter Givens of Vancouver, buried at Park Hill Cemetery B 147-4 [shares marker with Sella Candiani and Johanna Wineberg]. Ordered by Ben H. Snyder of 2810 E. 6th St. Vancouver, Charged to Ben Snyder, Claude Snyder Arey and Mrs. Rosa Snyder. Parents were Samuel Frantz born in Salem, [Columbiana County] Ohio and Martha Alexander born in Ohio.

#### **ROSS, DAVID Jr.**

b. 4/15/1923 Missouri, d. 3/7/1941, age 17y 10m 22d, single, CCC enrollee for the US Government, home was Brownsville, Haywood County, Tennessee, had been in the State of Washington for 6 days, died at the Vancouver Post Hospital in Vancouver, Clark County, Washington of bronchial pneumonia in the lower left and middle lung lobe, attended by Dr. J. A. Myll of the Vancouver Barracks, remains were sent to Brownsville, Tennessee for funeral and burial. Ordered by and charged to US Government Contract Finance office. Parents were David Ross Sr. and mother was not listed.

#### **TETERS, SARAH ELIZABETH**

b. 1/20/1867 Illinois, d. 3/12/1941, age 74y 1m 22d, married to Reverend (retired) W.A. Teters [1866-1963 has marker. Note: he was the director of Baptist Ministry for 54 years], housewife, Baptist, lived at 3406 Fairmount St., Vancouver, Clark County, Washington - had lived in the state for 12 years, died at St. Joseph Hospital, Vancouver of coronary thrombosis attended by Dr. Frank Boersma of Vancouver, funeral 3/17/1941 (Monday) 1:30 PM at Knapp Chapel with Reverend James Bennett of Vancouver, buried at Park Hill Cemetery C 368-3 (has marker). Ordered by husband and sons. Charged to husband Reverend W.A. Teters. Parents were James Mitcham born in Kentucky and Frances Stanley born in Illinois.

#### **GRAHAM, STACY**

b. 1/2/1919 Houston, [Harris County], Texas, d. 3/11/1941, age 22y 2m 12d, married to Lucille Graham, laborer for the SP & S RY Co., Methodist, lived at 1905 Grant St., Vancouver, Clark County, Washington - had lived in the State for 17 years, died at St. Vincent's Hospital in Portland, Multnomah County, Oregon of meningitis and a brain tumor operation attended by Dr. J. Roat of the Medical Dental Bldg. Portland, funeral 3/18/1941 (Tuesday) 2 PM at Knapp Chapel with Reverend C.S. Mook of Vancouver, buried at Fisher Cemetery [Plot 57 (has marker)]. Also buried in same plot are his grandparents Magnus F. Graham (1859-1918) and Susan E. Graham (1859-5/23/1915) (father born in Holland and mother born in Mississippi), father Stacy J. Graham [Sr. 1891-1947]. Ordered by and charged to wife and parents who lived at Rt. #1 Box 175 Vancouver also charged to H.R. Bangs. Parents were Stacy J. Graham born in Birmingham, [Jefferson County], Alabama and Nellie Mae Grant born in Missouri.

#### **JOHNSON, ALBERT**

b. 3/12/1861 Texas, d. 3/21/1941, age 80y 0m 9d, married to Martha Isabelle Johnson [5/29/1854-1/3/1928 has marker next to husband], retired from Columbia River Paper Co., Nazarene religion, lived at 1007 W. 16th City, Vancouver, Clark County, Washington - had reside in the state for 41 years, died at Clark County General Hospital in Vancouver of acute dilatation of the heart attended by Dr. Robert D. Wiswall of Vancouver, funeral 3/25/1941 (Tuesday) 1:30 PM at Knapp Chapel with Reverend W.B. Tait, buried at Park Hill Cemetery B 70-2 (has marker). Ordered by sons and daughters. Charged to the Estate and Clyde E. Johnson Rt. #2 Box 335 Camas, Washington. Parents were Benj. H. Johnson born in South Carolina and Judy Ann M. Fame born in Georgia.

## NEW BOOKS AT CCGS by Joanne Bortniak

These new acquisitions have been reviewed by Joanne Bortniak. Those marked with an R or Ref will be kept in the reference section of the CCGS library. The library is located in the historical society building at 1511 Main Street, Vancouver. Other will be available for members to check out after a short time on the "new books" shelf.

- 978.1 100 YEARS OF FIREFIGHTERS' RECORDS IN  
KS WICHITA, KANSAS. Short biographical paragraphs from (3 books) in alphabetical order by surname. Birth date and place, when joined firefighters, height, weight, when retired. Some have the date of death. Eleven people helped in preparing this book that was copyrighted by the Midwest Historical & Genealogical Society, Inc. 158 pages. © 1981.
- R310 1893 JACKSON COUNTY, OREGON SCHOOL  
OR DISTRICT CENSUS. (including 1898 Ashland District #5) A list of consolidations and annexations of school districts in Jackson Co. Is organized by district, student name, age and parents. indexed. 129 pages.
- R979.7 1969 CLARK COUNTY HISTORY Fort Vancouver Historical Society Vol X 1969 second edition. This book honors Dr. Carl J. Hoffmann, Physician and Surgeon, most of the book related to him in some way. Also an article on Lewisville, WA, Joseph H. Goddard Family and Elm Lutheran Church of Hockinson. Pages 349-400.
- R312.5 AN INDEX TO THE EARLY MARRIAGE  
NE RECORDS OF LANCASTER COUNTY,  
NEBRASKA. 1866©1906, VOL II (BOOKS 14 © 26)• Presented in memory of Martin Max Huesser. Bride and groom index at back of book directs you to book and page number for marriage entry. ©1987. approximately 275 pages.
- 929.13 ANCESTOR CHARTS JOPLIN, MISSOURI  
MO GENEALOGICAL SOCIETY. Two sheets to a page and 131 pages. Surname index to page 147. 1989.
- 325.3 ANCESTRAL ROOTS OF SIXTY COLONISTS  
Wei who came to New England between 1623 and 1650. The lineage of Alfred the Great, Charlemagne, Malcom of Scotland, Robert the Strong, and some of their descendants. by Frederick Lewis Weis. Presented by M. Zimmerman's Family. List of references. Index. Additions and corrections...5th edition. ©1985. 186 pages.
- R312.3 ASHLAND CEMETERIES, VOL 1, JACKSON  
OR CO., OREGON Includes Ashland Cemetery, Ashland Mausoleum, Hargadine, Mountain View IOOF, Rest Haven Crypts, Rest Haven, Niche's, map for cemeteries at end of each section. 1990.
- R312.3 ASHLAND MOUNTAIN VIEW CEMETERY,  
OR VOL 2, JACKSON COUNTY, OREGON. 4550 burials in this volume. came from several sources. Indexed. 94 pages. 1989.
- 929.2 BAKERS FOREVER Compiled by Warren L. Bak Baker, Jr. Indexed by Vera Wimberly. Presented by Montgomery County Genealogical and Historical Society Inc. Names were indexed as they appear in the book. a "P" by the page number indicates a picture on that page of that person. Numbers in Parenthesis show number of time person appears on a page. Page numbers after a given name, may or may not be for the same person. 31 p.
- 979.7 BIBLIOGRAPHY OF YAKIMA VALLEY  
WA GENEALOGY SOCIETY LIBRARY VOL 1  
Edited by Ellen Brzoska and Marge Karkau. 1985. There is a table of contents followed by a listing, including the call number for each item in the collection through Oct 1, 1985. 139 pages.
- 929.2 BILYEU BY YOU Surname booklet including all Bil spelling variations of BILYEU by Rose Caudle Terry. Includes genealogical information on the line of Bilyeu and request queries or information to be sent to Family Publications. 36 p. ©1993.
- 929.2 BROWNSON BRANCHES VOL II Compiled by Bro Marilou Cory-Nyblod. Presented by Marilou Cory-Nyblod. Also includes Bronson, Brunson, Branson and all spelling variations. 1790 CT census records. queries, answers to queries, wills, and many other bits of information about this name. 40 pages. includes index. April 1994.
- 312.7 BUTLER COUNTY, KANSAS Synopsis of wills  
KS 1869-1901. Midwest Historical & Genealogy



Society. Various people copied parts of this book. 56 pages of entries, full name index with corresponding page next to it.

R312.3 CEMETERIES IN LANCASTER COUNTY, NE NEBRASKA VOL I (Southeast Quarter). This covers cemeteries 1 through 16 with an all name index. Map of Lancaster County (with precincts) on cover. Location of cemeteries is shown on map with number corresponding to number used for that cemetery in the table of contents. Presented in memory of Martin Max Huesser. index. 159 pages. reprinted spring 1983.

R312.3 CEMETERIES IN LANCASTER COUNTY, NE NEBRASKA VOL II (Southwest Quarter). This covers cemeteries 17 through 37 with an all name index. Map of Lancaster County (with precincts) on cover. Location of cemeteries is shown on map with number corresponding to number used for that cemetery in the table of contents. Presented in memory of Martin Max Huesser. index. pages 160-332. reprinted spring 1986.

R312.3 CEMETERIES IN LANCASTER COUNTY, NE NEBRASKA VOL III & IV (Northwest Quarter and Northeast Quarter). This covers cemeteries 38 through 62 with an all name index. Map of Lancaster County (with precincts) on cover. Location of cemeteries is shown on map with number corresponding to number used for that cemetery in the table of contents. Presented in memory of Martin Max Huesser. index. pages 333-532. reprinted Spring 1986.

R312.3 CEMETERIES IN LANCASTER COUNTY, NE NEBRASKA VOL V (Index Part 1). This alphabetical index (a-k) of Wyuka Cemetery in the city of Lincoln, Lancaster County, Nebraska shows the burials, and the owner of the plot, not necessarily buried there. Map on cover shows the location of the cemetery in Lancaster County. Presented in memory of Martin Max Huesser. compiled March 1978-June 1979.

R312.3 CEMETERIES IN LANCASTER COUNTY, NE NEBRASKA VOL V (Index Part 2). This alphabetical index (l-z) of Wyuka Cemetery in the city of Lincoln, Lancaster County, Nebraska shows the burials, and the owner of the plot, not necessarily buried there. Map on cover shows the location of the cemetery in Lancaster County. Presented in memory of Martin Max Huesser. compiled March 1978-June 1979.

R312.3 CEMETERIES IN LANCASTER COUNTY, NE NEBRASKA VOL VII. This covers burials in Calvary, College View (Cedar Lawn) and Mount Carmel (B'nai Juhuda) Cemeteries in the city of Lincoln. The map on the cover shows the location of these

cemeteries. Presented in memory of Martin Max Huesser. pages 667-847. index. 1982.

R312.3 CEMETERIES IN LANCASTER COUNTY, NE NEBRASKA VOL VIII (index). This covers the Lincoln Memorial Park Cemetery. Map showing location of cemetery is on Cover. Presented in memory of Martin Max Huesser. pages 848-953. spring 1983.

R312 CEMETERIES OF SARASOTA COUNTY, FL FLORIDA. A record of births, deaths and burials. Compiled by The Genealogical Society of Sarasota, Inc. Alphabetical order for cemeteries and alphabetical order of those buried there. There are columns for name, birth, death, burial, & note but not everything filled in. Names and spellings retained as they appear on the stone. no additions or corrections were made. 212 page index. 695p. ©1992.

R312.4 CERTIFICATES OF DEATH FOR WICHITA, KS KANSAS 1887-1899. Taken from copies of the original certificates, verification was attempted as much as possible. Other certificates were used to show burial records. Arrangement is a year of certificate of death, followed by city directory listings for that year, using the number of order in the first part, places of burial for death certificates. Each year is numbered from 1. The 40 page full name index gives the certificate number followed by the year of death. 302 pages.

\*312.3 CLEARWATER CEMETERY: Tombstone readings and other cemetery records INDEX Sedgwick County, Kansas Midwest Historical & Genealogical Society, Inc. 48 pages of tombstone readings, 12 pages of interments that don't appear in tombstone records, 15 page index. Also includes: TOMBSTONE READINGS ST. PAUL'S LUTHERAN CEMETERY (between Cheney and Garden Plain Sedgwick Co., Kansas). Every known grave has a stone. 9 pages. TOMBSTONE READINGS VIOLA CEMETERY SEDGWICK CO. KANSAS 7 pages. SELTZER CEMETERY TOMBSTONE READINGS Minneha Township with directions for getting there and 9 pages of readings.

929.2 COOK HISTORY AND GENEALOGY OF COOKS AND COOK DESCENDANTS FROM 1760 TO 1985. by Miles Andrew Cook. Presented by Arlene Hill. There is an explanation at the start of the book for the arrangement of it. It also has listings for different wars. "Information of interest to anyone whose name is Cook or who is a descendant of a Cook." 163 pages.

929.2 CULP FAMILY HISTORY 1729-1990. Compiled by Barbara Augspurger. Nine generations are

recorded. There is no index. Each generation is started with a general introduction and followed with various proofs, and sources for many others. 110 p.

R973.3 DAR PATRIOT INDEX CENTENNIAL  
DAR EDITION PART I: A-F. Presented by June Andrews. Surnames in bold print, often showing more than one spelling of a name. 1109 pages.

R973.3 DAR PATRIOT INDEX CENTENNIAL  
DAR EDITION PART II: G-O. Presented by June Andrews. Surnames in bold print, often showing more than one spelling of a name. 1100 pages.

R973.3 DAR PATRIOT INDEX CENTENNIAL  
DAR EDITION PART III: P-Z. Presented by June Andrews. ©1994 Surnames in bold print, often showing more than one spelling of a name. 1136 pages.

312.4 DEATH RECORDS 1892-1907 KITSAP  
WA COUNTY, WA. Compiled by Minnie Hartson. Contains names of parents and their birth places, deceased's date of birth, age at death, residence, occupation and cause of death. indexed. 51 pages.

929.2 DESCENDANTS OF DANIEL STOUT OF  
Sto FREDERICK AND SHENANDOAH COUNTIES,  
VIRGINIA. Compiled by Jerry Ann Kinnear Stout. 88 p. 27 p. surname index. revised 1994.

929.2 THE DESCENDANTS OF SIMEON &  
Lan DORTHEA LANGBEHN compiled by John Langbehn. Presented by John Langbehn. Descendants through the seventh generation are recorded, many references are noted, pictures, index, 96 pages. 1992.

R943 DIE KIRCHENBUCHER SCHLESWIG  
Ger HOLSTEIN GERMANY. By Wilhelm Jensen. Presented by John Langbehn. *Written in German*. 126 pages.

312.3 A DIRECTORY OF TOMBSTONE  
KS INSCRIPTIONS SUMNER COUNTY, KANSAS. Excluding the city cemeteries of Wellington, Caldwell, Mulvane and Belle Plaine. Compiled by Robert C. Brady and Nancy L. Brady. 46 cemeteries are listed. several only have half a dozen names. There is a full name index (120 pages) with the cemetery by the name. 406 pages. ©1989.

911 EDWARDS' HISTORICAL ATLAS OF SUMNER  
Edw CO. KANSAS 1883. Compiled by John P. Edwards. The first 16 pages are information, pages 17 to 87 are maps, pages 88-101, an index.

929.3 EXTRACTIONS FROM THE DIARY OF  
Wil REVEREND MOSES ALLEN WILLIAMS.

The diary of reverend Moses Allen Williams is considered one of Southern Oregon's finest sources of early history." From the 14 volumes, records of marriages, church admissions, baptisms and funeral discourses have been extracted and are recorded in this book of 39 pages. Because he served in other places, the diary includes records from Uniontown, PA and Valparaiso, Chile as well as Rogue River Valley in Oregon. index.

929.2 THE FAMILY OF MICHAEL & MADELINE  
Zin ZINCK. By John W. Langbehn. Presented by John Langbehn. Descendants through the seventh generation. Pictures, references, index, 101 pages. 1993.

312.3 FLANAGAN-HUNT MORTUARY RECORDS  
KS April 16, 1912-April 15, 1915, WICHITA,  
KANSAS. Compiled by Beverly Malone. The first 9 page index is a full name index with the page corresponding to the 2nd index. There are 2 page numbers to each page in the second index, showing "the record for the funeral of ...". There are 25 items that may or may not be filled in. Deceased's date and place of birth, date, place and cause of death. Date and place of birth for parents, mothers' maiden name, occupation, cause of death, burial information. Very good for genealogy information. 98 pages. 1984.

312.3 FLANAGAN-HUNT MORTUARY RECORDS  
KS April 1915-NOV 30 1917, WICHITA, KANSAS  
Compiled by Beverly Malone. The first 3 page index is a full name index with the page corresponding to the 2nd index. There are 2 page numbers to each page in the second index, showing "the record for the funeral of..." There are 25 items that may or may not be filled in: deceased's date and place of birth, date, place and cause of death, date and place of birth for parents, mothers' maiden name, occupation, cause of death, burial information. Very good for genealogy information. 300 pages.

R369.1 FOUNDERS AND PATRIOTS OF AMERICA  
DFPA INDEX. This index is a compilation of Founders and Patriots listed in the 39 volumes of lineages of the members of the National Society of Daughters of Founders and patriots of America. ©1973 reprinted, 1989

325.31 GENEALOGICAL DEED ABSTRACTS  
Fer MECKLENBURG COUNTY, NORTH  
CAROLINA BOOKS 10-14. by Herman W. Ferguson. A map is included showing the locations of waterways and fords, the location of churches, and the boundaries of derivative counties. Land grants are difficult to organize for genealogy, but this book is laid out in an understandable form. Some land area is now in Tennessee. 250 pages, including a surname index. ©1990.



- 976.1 GENEALOGICAL GLEANINGS INDEX OF AL NOTABLE MEN OF ALABAMA VOL II  
Hon. Joel C. DuBose, Editor. Indexed by Vera Meek Wimberly. Presented by Montgomery County Genealogical and Historical Society Inc. All name index, 35 pages. ©1990.
- 929.2 A GENEALOGY OF THE DESCENDANTS OF Joh JOHN JOHNSTON (ALSO JOHNSTONE AND JOHNSON). By Joseph C. and Karen (Ferris) Greene. This book starts with a descendancy chart from John Johnston (1803) 7 generations followed by family group records, documentation is included on the family group sheets. June 1993.
- 976.2 THE HISTORY OF AN OLD CHURCH AND MS HER PEOPLE BOOK Vol I & II: 1821-1986. By the Philadelphus Presbyterian Church, Wayne County, Mississippi. Presented by Billie Jo Westby. Church history, pastors, membership rolls, pictures. 143 pages.
- 976.6 THE HISTORY OF OTTAWA COUNTY (OK). Nie By Vellma Nieberding. Presented by John Crowley. Pictures and articles portray early times to early 1980. Biographies. 586 pages. Index.
- 020 HOLDINGS OF M.H.G.S. LIBRARY. Compiled Sto by Jerry Ann Stout and Sue McGuire. Code number, title, author, publisher, etc. December 1993. 2 pages of additional materials, 120 pages. 1994.
- R977.3 ILLIANA ANCESTORS VOL. 2 & 3 Genealogy Gri column in *The CommercialNews* Danville, IL. 1984, 1985, 1986. By Joan A. Griffis. Danville is near the Indiana border, so this collection of newspaper articles is of interest to adjacent Indiana counties as well as those in and near Vermilion County.
- R977.3 ILLIANA ANCESTORS VOL.4. Genealogy Gri column in *The CommercialNews* Danville, IL. 1990, 1991, 1992. By Joan A. Griffis. Danville is near the Indiana border, so this collection of newspaper articles is of interest to adjacent Indiana counties as well as those in and near Vermilion County.
- 312.3 INDEX BURIAL RECORDS MOBILE COUNTY AL ALABAMA 1820-1856. Indexed by Elva Smallwood Wilson. Presented by Montgomery County Genealogical and Historical Society inc. Full name and page number given. No dates. 118 pages. ©1993.
- 974.6 INDEX FIRST PURITAN SETTLERS CT (CONNECTICUT). By R. R. Hinman. Indexed by Elva Smallwood Wilson and Vera Meek Wimberly. Presented by Montgomery County Genealogical and Historical Society inc. Index for the catalogue of the names of the first Puritan Settlers of the Colony of Connecticut. Full name index. 77 pages. Index ©1992.
- 978.2 INDEX FOR A BIOGRAPHICAL AND NE GENEALOGICAL HISTORY OF SOUTHEASTERN NEBRASKA VOL. 1 & 2. Published in 1904. Index was copyrighted in 1984. 97 pages. Presented in memory of Martin Max Huesser.
- 974.8 INDEX TO A BIOGRAPHICAL HISTORY OF PA LANCASTER COUNTY PENNSYLVANIA  
Early settlers & eminent men of the county. By Alex Harris 1872. Compiled by Ruth Brown. 31 p. ©1984
- 312.5 INDEX TO SNOHOMISH COUNTY WA MARRIAGES VOL. 1 1867-1899. Indexes for both brides and grooms. 57 pages
- 976.4 INDEX THE HISTORY OF LAMAR COUNTY, TX TEXAS. By W. Neville ©1937. Indexed by Mrs. Vera Meek Wimberly. 17 page, full name index. ©1980.
- 975.7 INDEX THE HUGUENOTS OF COLONIAL SC SOUTH CAROLINA. By Arthur Henry Hersch, Ph.D. Indexed by Vera Meek Wimberly. 10 page, full name index. ©1989.
- R312 IOWA GENEALOGICAL RECORDS Compiled IA by the members of the Iowa Genealogical Society. Presented by Arlis Renfro. Contains Boone County Marriages, 1850-1862; Fremont County Marriages 1849-1885; Keokuk County Marriages 1844-1860; Mahaska County Marriages 1844-1955; Gerro Gordo County 1860 Federal Census; Franklin County 1856 State Census Index; Greene County 1856 State Census; Hamilton County 1860 Federal Census; Henry County Special 1863 Census; Montgomery County 1860 Census; Sac County 1860 Census Index; Mahaska County Deaths & Miscellaneous. ©1978.
- R312.2 JACKSON COUNTY OREGON BIRTHS OR 1911-1914 VOL. 2. By Rogue Valley Genealogy Society. Birth surname index that gives date and place of birth, name of father and mother, their places of birth, and fathers' occupation. There is also a birth index and a mother's surname index. 89 pages.
- R312.2 JACKSON COUNTY OREGON BIRTHS OR 1915-1920 VOL. 3. By Rogue Valley Genealogy Society. Birth surname index that gives date and place of birth, name of father and mother, their places of birth, and fathers' occupation. There is also a birth index and a mother's surname index. 110 pages.

R312.3 JACKSONVILLE CEMETERY, JACKSON OR COUNTY, OREGON. By Rogue Valley Genealogy Society. 1991. Information for this book came from several sources, some differing a little from another for the same person. 126 pages; 4284 burials.

978.1 THE KANSAS AREA KEY TO BUTLER KS COUNTY. / THE KANSAS AREA KEY TO SEDGWICK COUNTY. Project chairman, Corrine Afton./Nicki Crozier. Each vol. has a table of contents showing history, boundaries, maps, mortuaries, newspapers, libraries, etc. Both were published in 1984.

920 KANSAS TIDBITS FROM MIDWEST KS HISTORICAL & GENEALOGICAL REGISTERS  
Compiled by Jerry Ann Stout. Table of contents shows varied information, obituaries, marriages, wills, school records early settlers of Sedgwick Co, Butler Co., Bourbon Co., Cloud Co., Kearney Co., Lynn Co., McPherson Co., Reno Co., Rice Co., and Wilson Co. Civil War Vets, G.A.R. Meade Post #114 and tax rolls of Wellington, Sumner Co. 266 pages including index. 1992.

911 LAND ATLAS AND PLAT BOOK ST. MO GENEVIEVE COUNTY, MISSOURI 1985.  
Contains business directory, important facts about land, and alphabetical listing of owners.

979.5 LANE COUNTY DIRECTORY. OREGON 1964.  
OR Presented by Carol Huesser. It includes general information, a listing of schools, clubs, churches, city officials, maps of towns included in the county, rural routes and rivers. 387 pages.

R979.5 THE LENS Washington high school. Portland, OR (Military Number). 1918 yearbook 64 pages plus several ads. Presented by Richard Grafton.

312.3 LEWIS COUNTY MORTUARY RECORDS WA VOL. 1: 1895 - 1910. for Fissel-Brown, Newell-Hoerling and Sticklin Mortuaries by The Lewis County Genealogical Society. The book includes their name, age, date of death, cause of death, date of burial, mortuary. pages aren't numbered. 1990.

312.3 LEWIS COUNTY MORTUARY RECORDS WA VOL. 2 1911 - 1920. for "Fissel-Brown, Newell-Hoerling and Sticklin Mortuaries by The Lewis County Genealogical Society. There is a list of medical terms and their definitions in the back of the publication. Also a list of Lewis County area cemeteries. The main part includes their name, age, date of death, cause of death, date of burial, mortuary. 110 pages. 1994

929.2 LOGAN COUNTY, KANSAS 1887-1987 from KS Prairie Pioneers to Pioneers of progress.

Centennial edition. Presented in memory of Timothy Alan Oman. Biographical information about many area families. Contains pictures, country boundaries, general history. Indexed. ©1986. 500 pages.

312.5 MAHASKA COUNTY, IOWA MARRIAGES IA - BOOKS 1 & 2 1844-1855/1855-1864 BOOK 3.  
Compiled by the Keo<sup>c</sup> Mah Genealogy Society. Presented by John Langbehn. Both an index of grooms and an index of brides.

R310 MARION COUNTY, KANSAS CENSUS (June 2) KS 1870. by Raymond F. Wiebe. There is an introduction, a map showing land section identification system, a summary report on census information. There were no American Indians or Blacks listed on the roll of microfilm #347 used for this report. An extra question asked on this census was the value of their real estate. 33 pages of census and 5 pages for index of families.

312 MARRIAGE NOTICES FROM KANSAS KS TERRITORIAL NEWSPAPERS 1854-1861.  
Contains 41 pages of marriage notices with names, dates, minister, newspaper the article was in, alphabetical order. DEATH NOTICES FROM KANSAS TERRITORIAL NEWSPAPERS 1854-1861 Compiled by Alberta Pantle. Printed in the Kansas Historical Quarterly. 122 p., alphabetical order. DEATHS & MARRIAGES NEWTON, HARVEY COUNTY, KANSAS 1901 & 1902; THE NEWTON JOURNAL NEWSPAPER 1892, 1893, & 1894; THE CHURCH HERALD FIRST METHODIST EPISCOPAL CHURCH NEWSPAPER. Compiled by Jerry Ann Kinnear Stout. Articles in mixed order, (37 p.) with an index (10p) 1992.

312.5 MARRIAGES IN LINCOLN COUNTY, NE NEBRASKA VOL I, 1861-1876/VOL II 1877-1882/VOL III 1883-1885. Compiled by Ruby Roberts Coleman. These records contain date of marriage, judge or minister, groom, age, place of residence, place of birth; bride's name, age, place of residence, place of birth; parents, witnesses and additional remarks. Each book has approximately 20 pages and a surname index.

312.5 MARRIAGES [of] TAMA COUNTY, IOWA IA 1853-1860; 1853-1880; 1880-1888; 1888-1904; 1904-1913. Several volumes are bound together. Presented by John Langbehn. Surnames, both brides and grooms are alphabetized together. Pub. by Iowa Genealogy Society.

929.1 MILITARY SOURCES, QUERIES & REVIEWS War VOL 1. By Rose Caudle Terry. She asks for queries and information about any of the wars or skirmishes to be sent in. She promises that she will publish



another volume containing her own research along with what comes in. 30 p.

MO MISSOURI QUERIES VOL 1 MARCH 1987 THROUGH VOL 8 AUG 1993. By Carolyn Wilson Weidner. Queries are free if pertaining to the state. Many queries, book reviews and full name index in each volume.

R977.8 MISSOURI SOURCES, QUERIES & REVIEWS VOL. 1. By Rose Caudle Terry. MO sources, tips and helps. Every name index. Miller county marriages, 1840-1850. will continue in next volume. miscellaneous information. 39 pages. ©1994.

R978.6 THE MONTANAN 1940. by Student Body of MT Montana State College. Presented by R.J. Thompson. Pictures and memories for the classes of 1940, 41, 42, 43. 288 pages.

929.2 PHELPS-MARSHALL KINSHIP. By Nancy S. McBride. ©1977. Table of contents, two indexes, bibliography, pictures. 339 pages.

979.5 ON THE OREGON TRAIL: SETTLERS OF OR CECIL, NORTH MORROW AND GILLIAM COUNTIES. Notes of Historical and Genealogical value taken from newspapers of 1900-1904. From the collection of Audrey Ellen Wilson. Presented by Audrey Smith. Articles were retyped to fit page size and are marked off with borders. A list of newspapers are on the title page. 211 pages. ©1993.

929.13 OREGON TRAIL SOURCES, QUERIES & OR REVIEWS VOL 1/2/3. By Rose Caudle Terry. There is a list of Oregon Pioneers who came to Oregon in 1844. There is also the start of the list of 800, with only the a's and b's in Vol 1, c's & e's in vol 2 and f's to l's in Vol.3. There are queries, book reviews from which are surnames for over 200 women who were on the Oregon trail. There is much more of interest to anyone researching the people on the Oregon trail. Indexed, 37 p.; 43 p.; 48 p. ©1993. ©1993. ©1994.

929.2 OUR ELKINS FAMILY 1803-1992. Compiled Elk by Barbara Johnson Augspurger. This book has family history, many proofs are included along with many family pictures. 113 p. ©1992

312.5 PLATTE COUNTY, NEBRASKA MARRIAGES NE BOOK 1: 1858-1881; BOOK 2: 1881-1885; BOOK 3: 1884-1889; BOOK 4: 1889-1893. Ed. by Platte Valley Kinseekers. Many entries contain the page number from the county record book, as well as residence, occupation, date of marriage and the name of the

parents of both the bride and the groom. The books have respectively, 75, 49, 62, 65 pages and an index.

312.5 PLATTE COUNTY, NEBRASKA MARRIAGES NE Book 5: 1893-1898; Book 6: 1898-1902; Book 8: 1906-1910 (From March 1902 through March 1906 the information is missing). Ed. by Platte Valley Kinseekers. Many entries contain the page number from the county record book, as well as residence, occupation, date of marriage and the name of the parents of both the bride and the groom. Each book has an index and approximately 70 pages.

943.8 POLISH ROOTS. By Rosemary A. Chorzempa. Cho Presented by Verdie Cox. A how-to book for researching Polish relatives. Lists some names and addresses to write to in Poland, one chapter is devoted to breaking the language barrier. Names, customs, ethnic groups, records to look for and other helps are found in this ©1993 book.

973.7 QUANTRILLS RIDERS 1861 - 1865 Including Gra riders of William Anderson & George Todd. Presented by Richard Grafton. While researching for himself, Mr. Grafton collected brief biographical histories on 408 known guerrillas, bushwhackers and Partisan Rangers, who fought under Quantrill, Anderson and Todd for the Confederate cause in MO, KS, AR, and KY during the Civil War years of 1861-1865. He states "In any case, do not consider this information as solid fact...intended only as a starting place for your own research into a fascinating facet of American history." Sources included. 73 pages. 1994.

R979.7 RECORDS OF YAKIMA COUNTY, WA WASHINGTON VOL V: NEWSPAPER ABSTRACTS 1884-1907. (births, adoptions, deaths, marriages, divorces, probates, naturalizations, homesteads, reunions). For each section of the book the records are alphabetized by surname. The index at the end gives the names of all persons not appearing in the alphabetized surname listings of the various groups. An \* by a name shows that there were other reports of the article and something underlined shows a questioned item. 130 pages. 1979.

R312.4 REGISTER OF DEATHS JULY 1880-SEPT. 1897 IA TAMA COUNTY, IOWA. Compiled by Tama County Tracers. Presented by John Langbehn. alphabetical order, taken from books 1 and 2. pages included from original book; date of death.

929.2 ROGER CLAP'S MEMOIRS with account of voyage of the "MARY AND JOHN" 1630. Presented by John Langbehn. "It gives a picture of the people who started things going in New England-of

people who were chosen from the choicest of England ... mostly all clergy were educated...people of means and culture...Striving to set up a theocratic society, it resulted in democracy and the abolition of kings and bishops..." 64 pages.

929.2 THE ROLLINS FAMILY OF MIAMI COUNTY, OHIO. Compiled by Jerry Ann Kinnear Stout. A page of sources of information is included. Copies of wills, newspaper articles, pension records, etc are included. Eight generations from Elizabeth Lovina Rollins.

973.3 ROSTER of SOLDIERS, SAILORS AND MARINES of the WAR OF 1812, the MEXICAN WAR, and the WAR OF THE REBELLION, RESIDING IN NEBRASKA JUNE 1, 1891. Who enlisted from the state of Minnesota and Miscellaneous; Mexican War; U.S. Navy Contains name, rank, company and address. 13 pages.

312.5 SALINE COUNTY, NEBRASKA MARRIAGE INDEX A-D. Compiled by Rose Marie Hulse. This index is alphabetical by surname, followed by given name; who married to, the record book and page where it is found. The first page has a list of the 23 marriage books with their dates included. Address is given for ordering the marriage record. 103 pages. 1993.

976.3 SURNAME INDEX By the Jefferson LA Genealogical Society. There is a list of members followed by a list of surnames being researched. Surname is followed by member numbers (refer to first list) 63 pages.

994 SWAN RIVER COLONY. Life in Western AUA Australia since the early colonial settlement. 1829-1962 Black and white pictures of people and places during that time.

R310 TAMA COUNTY, IOWA 1856 CENSUS. IA Presented by John Langbehn. The index is in the front of the book. Family members are named, as are others living at that address. 96 pgs.

929.2 TERRY TRACINGS. Surname Booklet and ALL Ter spelling variations such as TARY TARRY TERREY TERRI TERY TERRY etc. Vol 1 by Rose Caudle Terry. a compilation of all information on any Terry as well as a section on Terry branches. If you are a Terry, or have Terry relatives, look at this book. 37 p. ©1994.

312.3 TOMBSTONE READINGS CALVARY (CATHOLIC) CEMETERY at Kellogg & Vassar Wichita, Kansas. A list of cemeteries in sedgwick county name, location, source of records, and maps. Read

by Lucille Jones, Nicki Crozier and Pauline Richardson. Compiled by Anita Sickmon. There is a large foldout map of the cemetery, also, a smaller township map. Records are entered by section, in alphabetical order as read from the markers. 179 p index. 1981. "

312.3 TOMBSTONE READINGS MT. HOPE, KS KANSAS Sedgwick, County, Greeley twp. Read by Micki Crozier. The book starts with a 50 page all name index with page number. There are then 63 pages of information taken from the tombstones. 1981.

R979.7 VANCOUVER HIGH SCHOOL ALKI 1928. WA Presented by Verdie Cox. A yearbook for the school year 1927/1928. 97 pages.

R312.7 VIRGINIA COURT RECORDS IN PA SOUTHWESTERN PENNSYLVANIA: Index supplement. This is a listing of the names missing from the Waldenmaier Index which included only full names, these having only the surname were not included. 24 p. 1988.

R312.3 WELD COUNTY, COLORADO TOMBSTONE CO INSCRIPTIONS: VOL I. Also includes additional records taken from the town halls and private sources. Cemeteries are listed, with a map showing their location. The index lists a name once with pages where it appears, but name can appear more than once on a page. 486 pages. Copyright of 1982 by Genealogical Society of Wald County, Colorado.

929.15 WICHITA BUSINESS DIRECTORY: 1886-87, 1894, 1900. Compiled by Barbara R. Marsh. The three directories have been combined, listing name/occupation/address with an x under the years the name appeared in the directory. 75 pgs. 1989.

929.15 WICHITA CITY DIRECTORY 1878; 1883; 1885 KS Photocopy of the three phone books. Very few advertisements.

929.2 WORKMAN BRANCHES (including Woertman Wor & Wortman Vol. 1. This book includes Workman sources, tips and helps. by Rose Caudle Terry. For those researching the Workman line. 40 p. ©1993.

979.7 YAKIMA VALLEY GENEALOGICAL SOCIETY SURNAME INDEX 1981. WA The list of member names at the back of the book is preceded by a letter-number. The surname list includes that letter-number to show who is researching that surname. You can contact that person for more information. 128 pages.

\* \* \* \* \*

## VERTICAL FILE:

*These entries have been added to the Vertical File at the CCGS Library.*

R312.3 CROMWELL FAMILY (Old city cemetery) by  
Cro Diane Root; Family charts.

R929.13 FRENCH RESEARCH : LOUISIANA  
Photo copies of articles."

R929.2 HENRY CHURCH presented by Sharon Wodtke.  
Chu

R929.2 HENRY STEWART  
Ste

976.9 KENTUCKY MAPS AND PUBLICATIONS  
KY 1972 topographical map of Kentucky. 1966  
highway map Bourbon County, Kentucky. 1966 highway  
map Nicholas County, Kentucky. 1966 general highway  
map Mason County, Kentucky. Booklet of price list maps  
and publications 1975."

R929.2 THE LINDSAY APPLGATE FAMILY (The day  
App of the cow calling)(wagontrain log)\* presented by  
Roy Katschke.

976.3 MARRIAGE RECORDS JULY 1, 1720-DEC 4.,  
LA 1730; MARRIAGE RECORDS JAN 17, 1764 TO  
JAN 22, 1774; BAPTISMAL RECORDS ST.  
LOUIS CATHEDRAL VOL 7 JAN 3, 1772-DEC 30, 1776  
IN NEW ORLEANS, LOUISIANA. copied by Alice  
Forsythe.

978.2 NEBRASKA HISTORY (SUMMER OF 1993)  
NE A magazine published by Nebraska State  
Historical Society.

R972.8 PLACE NAMES IN MIDDLE AMERICA A  
booklet designed to make the 11 Middle American  
republics better known north of the Rio Grande. A little  
information is given on the origin of the name as well as a  
phonetic pronunciation. Presented by Richard N. Grafton.

R971 REMINISCENCES OF THE WEST COAST OF  
Mos VANCOUVER ISLAND by Rev. Chas. Moser, O.  
S. B. There is a photograph of Father Charles  
Moser and Martin A Huesser. Presented by Carol Huesser.

R977.3 RESEARCHING ILLINOIS. Some guidelines for  
IL genealogical research in the Illinois archives.

R929.1 SALES CATALOG IOWA GENEALOGICAL  
IA SOCIETY JAN. 1992. Price list of materials  
available for purchase.

R929.2 SCRAPBOOK OF C. W. HALL; 1985 HISTORY  
Hal OF COSHOCTON COUNTY, OHIO; HISTORY  
OF COSHOCTON COUNTY, OHIO 1740-1881.  
Miscellaneous information on C. W. Hall."

R929.2 STEWART FAMILY. Family charts for the  
Ste Stewart family. Presented by Gerry Gilman.

937.7 THE TRAIL GUIDE 1. THE STORY OF EARLY  
MO WYANDOTT, KAWSMOUTH AND THE  
BUSHWACKER MASSACRE AT LAWRENCE  
by ALAN W. FARLEY ; 2. MISSOURI VOLUNTEERS  
ON THE SANTA FE TRAIL 1847-1848 PART 2 by LEO  
E. OLIVA• Issues September 1969 & September 1970.



318 Erie Boulevard East  
Syracuse, NY 13202  
TEL (315) 471-0593  
FAX (315) 471-7220

Virginia Holter left a copy of her letter from the Erie Canal Museum. Although she didn't get anymore than a nice thank you, she thought the information from curator Donald A. Wilson would be of help to others.

"The Erie Canal Museum receives many genealogy request. Most people who worked on the Erie Canal were employed by contractors or shipping companies. Those records were not kept in a central repository and have been lost or are housed in many different institutions. Information on passengers aboard canal boats is also scarce. Each boat kept its own list of passenger's names and the vast majority of those lists have been lost. At the Erie Canal Museum we are in the process of compiling a database of all the name we have available from various documents in our archival collection. It will be some time before we will be able to utilize fully the system on which we are working."

"If you are searching for a canal boat or a captain, ...trace a federal registry. The procedure is outlines in "Researching Canal Boats" in American Canals, Bulletin of the American Canal Society No. 25, May 1978, pp. 2-3." The curator also suggests: Canal Society of New York, 311 Montgomery St., Syracuse, NY 13203; The New York State Archives, 11th floor, OR The New York State Library, The State Education Department both addressed to: Cultural Education Center, Empire State Plaza, Albany, NY 12230; Buffalo and Erie County Historical Society, 25 Nottingham Ct, Buffalo, NY 14216; or History and Genealogy Reference.



## VANCOUVER REGISTER

Vancouver, Clark County, Washington  
(1868 extractions)

The "VANCOUVER REGISTER" has been abstracted by CCGS member Pat Bauer from a microfilmed copy in the Fort Vancouver Library. Copies of the "Register" are held by the Clark County Historical Society. Some issue have become lost. Items of local interest for genealogists and historians have been copied. The [] following articles indicate the [page # / column #].

### Continued from September 26, 1868

\*\*\*\*\*

**DR. NEWELL**, agent for the Nez Perces Indians, accompanied by **LAWYA**, the celebrated Nez Perce Chief, together with two other chiefs of distinction of the same tribe, and **MR. WHITMAN** their interpreter, have just returned from a visit to their "Great Father" at Washington, to their homes near Lewiston. \* \* \* [2/4]

\*\*\*\*\*

### LOCAL MATTERS.

On the morning of Saturday the 19th inst., an alarm of fire was given by the bells of our Engine houses. Upon arriving on the ground it was found that the two story frame blacksmith shop situated on the corner of Main and Fifth streets, owned by Mr. **SAMUEL MARSH**, was on fire.

\* \* \* It was hard to guess where it would stop, as the roof of **MR. WINTLER's** store was on fire, and the small building South of it, the Register Office, and Mr. **G. W. DURGIN's** dwelling, were all smoking hot. But, thanks to the persistent and well directed efforts of the Fire Department, and the assistance of the citizens, the fire was confined to the shop, and Mr. Marsh's dwelling.

[3/1]

\*\*\*\*\*

We are grieved to learn that Mr. **SAMUEL LISHEN**, of Lewis River, had his house, barn and all they contained, consumed by fire last week. Many others, whose names we have been able to ascertain, we hear have suffered considerable from the same visitation. [3/1]

\*\*\*\*\*

**L. P. FISHER**, Esq., our San Francisco Agent has, by his promptness and attention to business entrusted to him by this office, secured the confidence and gratitude of the publishers of the Register. [3/1]

\*\*\*\*\*

Hon. **S. W. BROWN**, **A. G. COOK** and **LOUIS SOHNS** are visiting Salem on a mission in which the people of Vancouver are vitally interested. [3/2]

\*\*\*\*\*

## DIED.

At Indian Wells, Cal., (on the Desert,) Aug. 6, **R. V. PEABODY**, aged about 37 years. In Washougal Precinct, W.T., Sept. 17th, of water on the brain, Infant son of N. and M. **C. GIBBINS**, aged 11 months and 29 days. Pittsburg Gazette and Brownsville Clipper, please copy. [3/2]

\*\*\*\*\*

The publishers of Register are in urgent need of every dollar that is due them. It has been only by superhuman efforts that they have managed to collect enough money to keep the shebang running as long as they have. Something less than half of our subscribers in this county are in arrears for their subscriptions. \* \* \* [2/4]

[This was apparently the last issue of the Vancouver Register by Editors and Publishers **B. M. WASHBURN** and **S. P. McDONALD**. The next issue on Oct 17, 1868 lists on the masthead the name of **ENOCH G. ADAMS**, Editor and Publisher.

Some of the agents for the Register were **L. P. FISHER**, San Francisco; **JAMES JONES**, Walla Walla; **HEZEKIAH CAPLES**, St. Helens; **L.(?) H. MUNSON**, N. S. **PORTER**, Olympia; **REV. C. G. BELKNAP**, Seattle; **SETH R. HAMMER**, Salem. PB]

\*\*\*\*\*

## October 17, 1868

Hon. **COLUMBIA LANCASTER** is in town to attend the Fair, the first ever held in Clark County. The Fair opened at the Public Square at eleven o'clock, Oct. 21. \* \* \* [2/1]

\*\*\*\*\*

**ARRIVAL. - LIEUTEDNANT COL. WILLIAMSON**, of the Engineering Corpse, under whose efficient Superintendence the dredging of Swan Island has been so successfully prosecuted, came up yesterday on the *Oratlama* for purposes to remain in the city for a few days.- *Portland Commercial*. [The Register editor comments: "Splendid specimen of orthography! Sorry to learn they're all dead."] [ 2/3]

\*\*\*\*\*

LINEN STOCKINGS. - Mrs. ANN BROWN, of Yamhill county, aged seventy years, planted the seed and raised the flax, spun and knit a pair of ladies stockings, which were placed in the Pavilion. They are far superior to any that can be bought in the stores. - *Salem Unionist*. [2/3]

\*\*\*\*\*

REV. JOSEPH SMITH, in his political campaign, was at Hillsboro. \* \* \* [2/3]

\*\*\*\*\*

We notice numerous improvements around the town. DR. WALL has built a new awning to his store.

We visited Hon. S. W. BROWN's nursery the other day. He has a thrifty lot of fruit trees for sale of every variety. [3/1]

\*\*\*\*\*

VINCENT HATFIELD died at St. Helens last week. He was the blacksmith at the St. Helens Mill. He was a good, honest, pleasant man, and will be sadly missed by his acquaintances and friends. [3/1]

\*\*\*\*\*

We would like to mention, before we forget it, that the M. E. Church holds services at 10 1/2 o'clock a.m. and at 6 1/2 o'clock p.m. C. G. BELKNAP, Pastor. [3/1]

\*\*\*\*\*

A. A. SCHAE BEN has just arrived from the States. He says Washington Territory is the best country in the world to live in. He is enthusiastic for GRANT. [3/1]

\*\*\*\*\*

We would call attention to all indebted to MARSH & DURGAN, to call and settle with STRUVE & COOK, Att'ys. [3/2]

\*\*\*\*\*

### October 24, 1868

Monday we made a flying visit to Portland. We saw many friends, got many subscribers, and had a good time generally. On the boat we met Messrs. MEACHAM and SLATER, opposing candidates for Presidential Electors for Oregon. CAPT. CRAIG, Depot Quartermaster, also went to Portland at the same time. PURSER INGALLS showed us every attention. [3/1]



\*\*\*\*\*

**L. B. YOUNG** has an excellent hair unguent, called "Meen Fun." It is a Chinese preparation, invented by the **EMPEROR PING WANT** and his most learned mandarin, **SOOCK EEN**. It is highly spoken of. \* \* \* [3/1]

\*\*\*\*\*

We learn that **WINFIELD S. CHAPMAN**, our young friend and former pupil, has been appointed in Portland Deputy Surveyor under **MR. MORSE**. Mr. Chapman is son of **COLONEL CHAPMAN** so well known. The young man is but eighteen years old, and displays rare talent. His friends have reason to be proud of him, and we wish him abundant success. [3/1]

\*\*\*\*\*

**GEN. E. HAMILTON** of Portland, an old friend, is in town attending the Fair. [3/1]

\*\*\*\*\*

Oct. 23d. - The Firemen's ball last night was a success. There were thirty couples present. The supper at the Pacific House was excellent. **H. REDBURG, HENRY HOWARD** and **HENRY WINKELMAN**, Musicians. [3/1]

\*\*\*\*\*

A MUDDLE. - The first Monday of November is the time appointed for holding the District Court at Vancouver, and the Monday thereafter, the Olympia term commences. **JUDGE HEWITT**, by virtue of the net disapproving the Legislature re-assignment of the District Judges, must hold both terms. \* \* \* **JUDGE DENNISON** was applied to assist, and wrote he would come, but later advices from Judge Hewitt state that Judge D. cannot come. \* \* \* [3/2]

\*\*\*\*\*

It is some expected that **JOHN F. CAPLES** of Portland will deliver a lecture at Edding's Hall on Friday night. [3/2]

\*\*\*\*\*

**LEWIS VAN VLEET**, President of the Clarke County Agricultural Society delivered an oration Oct. 22, 4 p.m. [3/2]

\*\*\*\*\*

October 31, 1868

### The Shooting of Ex-Governor Beall.

Below is an account of the homicide of **Governor BEALL**, father of **S. W. BEALL**, Deputy Sheriff of this county. The deceased appears to have been one of Nature's noblemen. The *Montana Herald*, of September 25th, gives the following particulars in regard to this tragic affair:

Ex-Governor **S. W. BEALL**, of Wisconsin, was shot and probably mortally wounded, in the counting room of the *Post*, between the hours of two and three o'clock this afternoon, by **GEORGE M. PINNEY**, the manager of the paper. \* \* \*

#### DEATH OF GOVERNOR S. W. BEALL

After lingering in a state of unconsciousness through the night and until eleven o'clock this forenoon, Governor Beall died at the residence of **GENERAL SOL. MEREDITH**, on Clote street. \* \* \*

#### MEETING OF THE EX-UNION SOLDIERS AND SAILORS OF HELENA.

The following are the minutes of a meeting of ex-soldiers and sailors, held in the city of Helena, on the 27th day of September, 1868.

**GEN. SOL. MEREDITH** was called to the chair, and **CAPT. GEO. F. COWAN** chosen Secretary. Appropriate remarks were made by Gen. Meredith, the president, regarding the object of the meeting.

On motion, a committee of three on resolutions was appointed by the Chair, consisting of **COL. W. S. SCRIBNER**, **CAPT. H. H. LOHMIRE** and **WILLIAM REED**. \* \* \* [2/2]  
[this item is continued on 2/3]

On motion, the Chair appointed a committee of three, consisting of **COL. W. S. SCRIBNER**, **CAPT. GEO. F. COWAN** and **LIEUT. H. McAULEY**, to make all necessary and proper arrangements for the funeral services of our lamented comrade.

Committee reported comrades **GEO. F. COWAN**, **W. S. SCRIBNER**, **H. McAULEY**, **H. LOHRIRE**, \_\_\_\_\_ **PUTMAN**, **GEO. VAN WATERS**, \_\_\_\_\_ **ROSS** and **J. B. JENNINGS** as pall bearers. \* \* \*

**COL. F. ABT** was appointed a committee of one to secure music for the funeral occasion.  
\* \* \* [2/3]

\*\*\*\*\*

The *Albany Register* pays us a compliment by taking an extract from our leader of Oct 17th. **COLLINS VAN CLEVE** is an old comrade in arms. Give him a lift, every true Union man! His paper is alive and racy. Nothing on the "weak sister" style. [2/3]

\*\*\*\*\*

### List of Premiums and Diplomas.

#### AWARDED

by the Clarke County Agricultural and Mechanical Society, at  
their first fair, held on the 21st, 22d, 23d, and 24th of  
October, A. D., 1868

[In the interest of brevity, the amount of the awards and the many duplicate names are deleted. If a name you are interested in appears, you may wish to look at the microfilm of the original for more detail. PB]

### CLASS 1 - NO. 2

Horses for all work - best brood mare \* \* \* **JOSEPH BRANT** \* \* \*  
Best horse for all work, to **JOHN BOZARTH** \* \* \*  
Best stallion, 3 years old, to **WILLIAM GOODWIN** \* \* \*  
**NO 5 - JACKS AND MULES**  
Best jack, to **HIRAM SMITH** \* \* \*  
Best two year old mule, to **MR. DOUTHIT** \* \* \*  
Best mule colt, to **S. D. MAXON** \* \* \*  
Best mule colt, to **GAY HAYDEN** \* \* \*

### CLASS 2 - NO. 1

Best span of horses, (tested by trial) to **J. T. LOVELACE**.  
**NO. 2 - TROTTING**  
Best trotting horse \* \* \* won by **M. SACA**.  
Best trotting horse \* \* \* won by **M. SHEA**.  
**NO. 3 - RUNNING**  
Fastest running horse \* \* \* won by **JOSIAH LEE**.  
Fastest running horse \* \* \* won by **M. D. L. WEBB**.

### CLASS NO. 3 - NO. 1

Heifer, one year old, to **ANTON YOUNG** \* \* \*  
**NO. 2 - GRADED CATTLE**  
Best cow \* \* \* to **JAMES CRAWFORD** \* \* \*

### CLASS NO. 4 - SHEEP

Best buck \* \* \* **TO LEWIS VAN VLEET** \* \* \*  
Best Cotswold buck, to **MATTHIAS SPURGEON** \* \* \*

### CLASS NO. 6 - GRAIN, SEEDS & VEGETABLES

Best sack of wheat, to **HENRY SHEPPARD** \* \* \*  
Ear of wheat, to **W. R. ANDERSON** \* \* \*  
Best peck of white beans, to **JOHN S. TOOLEY** \* \* \*  
Best potatoes, to **S. W. BROWN** \* \* \*  
Best squashes, to **W. BRATTON SR.** \* \* \*  
Best rutabaga turnips, to **J. S. HATHAWAY** \* \* \*

### CLASS NO. 7 - FRUITS

Best exhibit of dried apples, **MRS. A. KNIGHT** \* \* \*  
Best exhibit of apples \* \* \* **MRS. GAY HAYDEN** \* \* \*

### CLASS 8 - FLOWERS AND FANCY WORK

Best exhibit of natural flowers, to **MRS. EBERT** \* \* \*  
Best crayon, to Miss **SOPHRONA OLLIS** \* \* \*  
Best crayon, to Miss **TINNIE HAYDEN** \* \* \*  
Crayon of **MRS. G. T. McCONNELL** \* \* \*  
Best wax flowers, to Miss **MAGGIE SAUER** \* \* \*  
Best silk embroidery, to Mrs. **ADA MILLER** \* \* \*  
Best silk embroidery, to **MRS. G. W. DURGIN** \* \* \* (listings con't next issue)





# AncestorCharts

## Ancestor Chart of Lore (SCHUHART) ALLRED

by Grover C. ALLRED  
312 NE 111th St.,  
Vancouver, WA 98685-3924

1. **SCHUHART**, Lore/Lora Ruth; b 14 Sep 1929 Hermosa Beach, CA; m Grover Cleveland **ALLRED** 23 Jun 1960.
2. **SCHUHART**, Rudolph; b 11 Feb 1896 Hamburg, GER; m 23 May 1926; d 09 Apr 1951 Folsom, CA.
3. **VETTER**, Melanie; b 15 Jun 1895 Portland, OR; d 10 Aug 1957 Woodland, CA.
4. **SCHUHART**, Heinrich; b 11 Aug 1854 prob Braunscheig, GER; m 15 Aug 1891; d 07 Jun 1925 Magdeburg, GER.
5. **BUSCH**, Milli; b 08 Oct 1870 Mönchen-Gladbach, GER; d 1959.
6. **VETTER**, Hermann; b 07 Jun 1863 GER; d 25 Aug 1939 Hermosa Beach, CA.
7. **RUTH**, Melanie; b 18 Mar 1869; d 19 Jul 1904 Hermosa Beach, CA.
10. **BUSCH**, Mathew Christian; b 25 Mar 1828 prob Mönchen-Gladbach, GER; m 26 Aug 1860; d 08 Aug 1887 prob Mönchen-Gladbach, GER.
11. **LINDGENS**, Anna Gertrud; b 28 Aug 1841 Hochneukirch, GER; d 21 Oct 1915 Mönchen-Gladbach, GER.
12. **ERNST**, Abraham Heinrich; b 26 May 1818; m 14 Oct 1852; d 25 Sep 1876.
13. **HERMANN**, Johanne Ph. Wilh. Christ.; b 21 Nov 1820; d 29 Nov 1882.
20. **BUSCH/BOSCH**, Mathew Christian; b 24 Jun 1794; d 03 May 1871.
21. **CÜRLIS**, Catharina Gertraud; 21 May 1800; d 12 Dec 1870.
24. **VETTER**, Philipp Jacob; b 23 Feb 1775; m 28 Nov 1805; d 17 Jun 1850.
25. **SCHOTT**, Philippine Kath.; b 24 May 1784; d 07 Jun 1856.
26. **HERMANN**, Friedrich; b 12 Mar 1774; d 21 Jan 1855.
27. **GRAF**, Elisabeth; b 17 Feb 1770; d 13 Aug 1840.
40. **BHUSS**, Arret ten; m prob 31 Jan 1604.
41. **HOEF**, Johanna im.
48. **VETTER**, Nicolaus; b 1746; m 17 Jul 1770; d 1800.
49. **GLÜCK**, Maria Philippine; b 26 Jul 1749; d 18 Apr 1817.
50. **SCHOTT**, Heinrich Ernst; b 22 Feb 1755; d 1799.
51. **REIS**, Katherine Elise; b 30 Jul 1760; d 23 Jan 1826.

## Ancestor Chart of Edward C.W. SCHUTTE, Jr

by Sharon (BATES) SCHUTTE  
3516 SE 173rd Court, Camas, WA 98607

1. **SCHUTTE** Jr., Edward C.W.; b 29 Apr 1929; m2 Sharon Lee **BATES** 14 Feb 1987.
2. **SCHUTTE**, Edward C.W.; b 25 Sep 1897 Cape Girardeau, MO; m 01 Aug 1923 Aberdeen, SD; d 14 Aug 1962 Owatonna, MN; bur Oakwood Cem.
3. **REHFELD**, Dena Augusta; b 06 Aug 1898 Warner, SD; d 04 Apr 1961 Austin, MN; bur Pasadena, CA.
4. **SCHUTTE**, Henry; d Rochester, MN?
5. \_\_\_\_\_, Emma H.; b 20 Sep 1875 Cape Girardeau, MO; m1 Henry **SCHUTTE**; m2 Charles **LUDWIG**; m3 ?? **MAILE**; d 30 May 1954 Austin, MN; bur Oakwood Cem.
6. **REHFELD**, Carl William; b 26 Feb 1858 Berlin, GER; m 26 Jan 1882; d 27 Sep 1937 Pasadena, CA; bur Forest Lawn Mausoleum.
7. **VOIGT**, Bertha Louisa Augusta; b 02 Mar 1859 Lebanon, Dodge Co., WI; d 12 Feb 1916 Pasadena, CA.
12. **REHFELD**, Carl (adoptive father); b 30 Sep 1838 Berlin, GER; m 08 Apr 1861; d 1886-87 Warner, SD.
13. **GUELZOW/ZOLSOW**, Maria; b 24 Feb 1836 Berlin, GER.

14. **VOGT**, Christian; b 03 Nov 1820 Olderbruch, PRU; m 19 Feb 1846; d 04 Apr 1903 James Brown, SD.
15. **UTTECH**, Henriette Louise; b 15 Sep 1825 Trachel, B. PRU; d 03 Feb 1903.
28. **VOGT**, Christian; b 1795 Olderbruch, PRU.
29. **BOENICKE**, Marie; b 1795; d bef 1860.
30. **UTTECH**, Christian F.; b 1765 Trachel, PRU; d 1850 or 1860 Lebanon, Dodge Co., WI.
31. **POPLITZ**, Christine; b 1791 Trachel, PRU; d 1850 or 1860 Lebanon, Dodge Co., WI.

## Ancestor Chart of

**William Lawson ST. JOHN**

Submitted by Jerri (**STRUBLE**) **ST. JOHN**  
4809 NW 254th St., Vancouver, WA 98642-9334

1. **ST. JOHN**, William Lawson; b 23 Jun 1925 Montgomery, AL; m Jerri **STRUBLE** 19 Mar 1946 Klamath Falls, OR.
2. **ST. JOHN**, Herbert Lawson; b 29 Mar 1903 Montgomery, AL; d 15 Jun 1985 Canby, Clackamas, OR; m 19 Dec 1924 Montgomery, AL.
3. **COOPER**, Leota; b 19 Dec 1903 Chapman, Butler, AL; m 19 Dec 1924 Montgomery, AL.
4. **ST. JOHN**, Sampson Capers; b 10 Jun 1870 Graves, Terrell, GA; d 20 Feb 1952 Montgomery, AL.
5. **PURVIS**, Sarah Eliza; b 27 Jul 1874 Preston, Webster, GA; d 24 Apr 1966 Montgomery, AL.
8. **ST. JOHN**, Edward C.; b 1825; d 24 Dec 1901 Graves Station, GA; m 01 Nov 1860.
9. **CARROLL**, Frances Elizabeth; b 22 Jun 1841; d 19 Aug 1926; m 01 Nov 1860.
10. **PURVIS**, William Lawson; b 14 Dec 1837; d 23 Aug 1911.
11. **MCDANIEL**, Frances; b 21 Jan 1848; d 19 Jan 1925.
16. **ST. JOHN**, Isaac H.
17. \_\_\_\_\_, Elizabeth; b 20 Jan 1795; d 07 Jul 1852 Social Circle, GA.
20. **PURVIS**, Ballinger; b 05 Sep 1804; d 09 Feb 1884.
21. **PEEL**, Jane; b 16 Aug 1806; d 27 Mar 1889.
22. **MCDANIEL**, Abner; b 22 Feb 1817 Northhampton, NC; d 19 Jun 1901; m 12 Jan 1843 Jefferson, GA.
23. **DAVIS**, Eliza; b 18 Jan 1817; d 18 Nov 1873; m 12 Jan 1843 Jefferson, GA.
42. **PEEL**, Richard.
43. **MCWATTY**, Nancy.
44. **MCDANIEL**, Frederick; d 1843.

84. **PEEL**, John; b IRE; d Jefferson, GA.
85. **GAMBEL**; b IRE.

## Ancestor Chart of

**CLAUDIA (STIFFLER) WADE**

2111 NE 160 Av., Vancouver, WA 98684-8697

1. **STIFFLER**, Claudia Dianne; b 11 Aug 1947 Everett, Bedford Co., PA; m1 Andrew McBain **SINCLAIR**; m2 Michael (**POSTHUMA**) **WADE** 17 Mar 1977 Pensacola, Escambia Co., FL.
2. **STIFFLER**, Carl Richard; b 10 Oct 1921 Bedford, PA; m1 Alice Minervia **BLACK** 06 Sep 1946 Winchester, Frederick Co., VA; m2 Dorothy Louise **KOONTZ** 14 Jun 1968 Las Vegas, NV; d 11 Oct 1992 Hopewell, Bedford Co., PA.
3. **BLACK**, Alice Minervia; b 09 Jul 1929 Pittsburgh, PA.
4. **STIFFLER**, William Harry; b 28 Jul 1883 Bedford, PA; m 16 Jul 1920 Bedford, Bedford Co., PA; d 28 Jul 1937 Bedford, Bedford Co., PA.
5. **MOCK**, Sarah Estella; b 06 Jan 1890 Bedford, Bedford Co., PA; d 24 Jul 1961 Bedford, Bedford Co., PA.
6. **BLACK**, John Calvin; b 24 May 1900 Wilkinsburg, Allegheny Co., PA; m 07 Jun 1923 Knoxville, Allegheny, PA; d 09 Jul 1967 St. Petersburg, FL.
7. **LOWE**, Lucinda Reymers; b 17 Nov 1900 Baldwin Twp, Allegheny Co., PA; d 16 Oct 1965 St. Petersburg, FL.
8. **STIFFLER**, David F.; b 06 Aug 1846 Bedford, Bedford Co., PA; d 21 Apr 1906 Bedford, Bedford Co., PA.
9. **FETTER**, Maria; b 22 Mar 1852; d 03 Dec 1924 Bedford, Bedford Co., PA.
10. **MOCK**, Hezekiah; b 28 Oct 1855; m 10 Feb 1881; d 1928 Bedford, Bedford Co., PA.
11. **REIGHARD**, Georgiana Loretta; b 01 Feb 1863; d 1922.
12. **BLACK**, Samuel; b 1860.
13. **MATSON**, Anna; b 1863.
14. **LOWE**, Arthur Wittingham; b Washington, PA; m1 Carrie Anna **EISAMAN** 02 Aug 1888; m2 Adelaide.
15. **EISAMAN**, Carrie Anna; d 11 Dec 1909.
16. **STIFFLER** Jr., Henry.
17. **HELSEL**, Sophia.
18. **FETTER**, Charles.

20. **MOCK**, Hugh; b 04 Dec 1826; d 1903.
21. **HITE**, Esther Ellen; b 1831; d 1890.
22. **REIGHARD**, Absalom; b 06 Oct 1833; d 02 Jul 1906.
23. **KAUFFMAN**, Margaretta; b 29 Apr 1830; d 04 Jan 1907.
28. **LOWE**, Robert Allen.
29. **BRADLEY**, Jane Nixon.
30. **EISAMAN**, Lewis A.; b 02 Sep 1824; m1 Lucy **REYMER**; m2 Harriet **MECHLING**; d 06 Jan 1889.
31. **REYMER**, Lucy; b 14 Apr 1832; d 21 Jun.

Ancestor Chart of

**Marilyn (STODDARD) SHROLL**

1020 NW 94th St, Vancouver, WA 98665

1. **STODDARD**, Marilyn Harriet; b 10 Apr 1937 Vancouver, WA; m Glen Burnell **SHROLL** 06 Jun 1959 Battle Ground, WA.
2. **STODDARD**, John Gerald; b 23 Feb 1905 Ravenna, MI; m 06 May 1933 Vancouver, WA; d 17 Oct 1979 Spokane, WA.
3. **CRESAP**, Mary Elizabeth; b 07 May 1908 Battle Ground, WA.
4. **STODDARD**, Thadius Sherman; b 08 Apr 1866 Gratiot Co, MI; m 08 Apr 1888 Coopersville, MI; d 1940 Ravenna, MI.
5. **BOWSER**, Cecilia (Dinah); b 04 Oct 1871 Ravenna Township, MI; d 04 Nov 1945 Ravenna, MI.
6. **CRESAP**, Edward Eli; b 19 Feb 1876 Battle Ground, WA; m 01 Nov 1900 Vancouver, WA; d 20 Jun 1959 Battle Ground, WA.
7. **MASTERS**, Lucy; b 05 Jul 1880 Mansfield, Nottinghamshire, ENG; d 26 Feb 1944 Battle Ground, WA.
8. **STODDARD**, Sylvester; b 22 Oct 1834? Oakland, Allegany Co., NY; m 13 Feb 1856 Portland, MI; d 02 May 1918 Coopersville, MI.
9. **WARNER**, Harriet A.; b 1835? Lyons, MI?; d MI.
10. **BOWSER**, George A.; b 29 Jul 1836 ONT; m 13 Jul 1860 ONT; d 26 Nov 1920 Coopersville, MI.
11. **GRAVES**, Mary Ann; b 17 Jun 1835 Cumberland Co., ENG; d 05 Feb 1899 Ravenna, MI.
12. **CRESAP**, Robert Vinton; b 14 Apr 1836 Upper Sandusky, Wyendotte Co., OH; m 15 Jan 1873 Clark Co., WA; d 21 Aug 1911 Vancouver, WA.

13. **VAN ATTA**, Phoebe Caroline; b 17 Feb 1858 Harrisberg, Linn Co., OR; d 13 Apr 1937 Vancouver, WA.
14. **MASTERS**, Walter; b 19 Nov 1853 Puddlehamton, Dorsetshire, ENG; m ENG; d 28 Oct 1928 Seattle WA.
15. **ANCLIFFE/MCCLIFFE**, Mary; b 1854 Mansfield, Nottinghamshire, ENG; d 31 Jan 1894 Battle Ground, WA.
16. **STODDARD**, John.
17. **WHITFORD**, Lurana.
18. **WARNER**, Thadiaz.
19. \_\_\_\_\_, Philanda.
22. **GRAVES**, Thomas.
23. \_\_\_\_\_, Sarah.
24. **CRESAP**, Eusebius.
25. **MARTIN**, Hannah.
26. **VAN ATTA**, Gearsham.
27. **PALMER**, Sarah.
28. **MASTERS**, Robert?.
29. \_\_\_\_\_, Frances?.
30. **ANCLIFFE/MCCLIFFE**, Thomas.

Ancestor Chart of

**James Willis WARREN**

by Jennifer (**COOK**) **WARREN**

10712 NW 11th Av., Vancouver, WA 98685

1. **WARREN**, James Willis; b 02 May 1934 Eugene, OR; m Jennifer Taft **COOK** 28 Mar 1981 La Crosse, WI.
2. **WARREN**, Willis Cosper; b 16 Sep 1908 Portland, OR; m 06 Aug 1932 Eugene, OR; d 12 Apr 1987 Tigard, OR.
3. **KNOWLES**, Elizabeth Emily; b 12 Nov 1907 Manhattan, NY; d 25 May 1990 Vancouver, WA.
4. **WARREN**, Joseph Willis; b 03 Aug 1882 Red Cloud, NE; m 05 May 1907 Banks, OR; d 08 Feb 1971 Newburg, OR.
5. **COSPER**, Flossie Viva; b 30 Apr 1887 Greenville, MI; d 15 May 1961 Portland, OR.
6. **KNOWLES**, Louis Wingate; b 12 Jul 1872 Janesville, WI; m 08 Sep 1903 New York, NY; d 11 Nov 1954 Eugene, OR.
7. **RITCHIE**, Martha Elizabeth; b 20 Sep 1873 Londonderry, IRE; d 20 Jun 1914 Mt. Vernon, NY.
8. **WARREN**, Joseph Wesley; b 30 Apr 1841 Greene, IN; m 10 Jun 1868 Medina, OH; d 30 Jun 1908 Red Cloud, NE.



9. **PIERCE**, Julia Sametha; b 28 Jul 1850 Medina, OH; d 30 Jun 1908 Red Cloud, NE.
10. **COSPER**, Benjamin Griffin; b 29 Jan 1853 Chesterville, OH; m 04 Oct 1879 Greenville, MI; d 20 Sep 1927 McMinnville, OR.
11. **SMITH**, Elesta; b 20 Jan 1858 Kent Co., MI; d 24 Mar 1945 Portland, OR.
12. **KNOWLES**, William; b 24 Jul 1816 Northwood, NH; m 19 May 1852 Northwood, NH; d 27 May 1895.
13. **HILL**, Emily Ann; b 31 Jul 1824 Northwood, NH; d 02 Jul 1917 Dorchester, MA.
14. **RITCHIE**, Archibald; b 1847-48 IRE; m Londonderry, IRE; d 19 May 1921 New York, NY.
15. **PINKERTON**, Elizabeth; b 24 Feb 1851 Londonderry, IRE; d 10 Sep 1919 New York, NY.
16. **WARREN**, Reuben.
17. **AUSTIN**, Naomi.
18. **PIERCE**, Lorenzo Matherson.
19. **BRANCH**, Emeline.
20. **COSPER**, Stephen H.
21. **WARNER**, Leno.
22. **SMITH**, William Otho.
23. **ERVIN**, Sarah Ann.
24. **KNOWLES**, Morris.
25. **CAVERLY**, Polly.
26. **HILL**, Mark.
27. **HAVEN**, Lucretia.
28. **RITCHIE**, William.
29. **MCSPARRON**, Martha.
30. **PINKERTON**, Samuel.
31. **IRWIN**, Eliza.

---

Ancestor Chart of  
**Kathlyn Marie WARSOP**

7215 NE 129th Ave., Vancouver, WA 98682

1. **WARSOP**, Kathlyn Marie; b 21 Aug 1952 Portland, OR; m Gerald Fred **ALLMENDINGER** 10 Jun 1978 Vancouver, WA.
2. **WARSOP**, Darrell Allen; b 23 Jan 1934 Bellingham, WA; m 28 Jan 1952 Stevenson, Skamania Co., WA.
3. **WELLINGTON**, Jean Delores; b 21 Aug 1933 Seattle, King Co., WA.
4. **WARSOP**, Lisle Allen; b 14 Jun 1900 Bellingham, WA; m 24 Nov 1929 Bellingham, WA; d 03 Dec 1964 Portland, OR.

5. **MCCORKLE**, Josephine Lucinda; b 23 Nov 1909 Bellingham, WA.
6. **WELLINGTON**, Theal Burns; b 07 Jan 1909 Seattle, WA; m 1929 Seattle, WA; d Sep 1950 Portland, OR.
7. **AUDREAUX**, Mary Louise; b 14 May 1910 Kent, WA; d 12 Jan 1975 Portland, OR.
8. **WARSOP**, Henry; b 10 Oct 1853 Marshall, Wayne Co., MI; m 18 Sep 1883 Athens, MI; d 14 Aug 1938.
9. **WARSOP**, Elizabeth.
10. **MCCORKLE**, William Arnold; b 13 Aug 1879 Getaway, OH; m 27 Jul 1900 LA; d 04 Jul 1948 Port Angeles, WA.
11. **BROCK**, Zella.
12. **WELLINGTON**, Royal Bacon; b 04 Aug 1883 San Antonio, Bexar Co., TX; m 11 Apr 1905 Seattle, WA; d 05 Apr 1952 Vancouver, WA.
13. **LATTIN**, Harrieh Eureka; b 11 Feb 1888 Sioux Falls, Minnehaha Co., SD; d 31 Jul 1972 Vancouver, WA.
14. **ANDREAUX**, Charles.
15. **ARLIN**, Nel.
16. **WARSOP**, Andrew.
17. **BALL**, Caroline.
18. **WARSOP**, Harry.
19. \_\_\_\_\_, Flora Jane.
24. **WELLINGTON**, William Charles.
25. **BYRN**, Frances.
26. **LATTIN**, Horace Reed.
27. **BOUGHNER**, Frances Minerva.

---

Ancestor Chart of  
**Marianne Christine YOUNG**

by Frank Dorsey **YOUNG**  
3008 NE 164th, Ridgefield, WA 98642-8918

1. **YOUNG**, Marianne Christine; b 01 Feb 1949 Portland, OR.
2. **YOUNG**, Frank Dorsey; b 30 Jul 1923 Hood River, OR; m 25 May 1948 Frankfurt, GER.
3. **FOUREY**, Jacqueline Gabrielle; b 29 Aug 1924 Paris FR; d 13 Jul 1993 Mons, BEL.
4. **YOUNG**, John Hedrick; b 13 Sep 1886, Bowie, TX; m 02 Sep 1908; d 04 Jan 1933 Hood River, OR.
5. **DORSEY**, Nelson Lea; b 14 May 1887; m 02 Sep 1908.
6. **FOUREY**, Pierre Eugene; b 21 May 1900 Brou, FR; m 05 Apr 1924, Paris, FR.

7. **PAINBOIN**, Jeanne Eugenie Julie; b 26 Apr 1901, Paris, FR.
8. **YOUNG**, John Andrew; b 11 Nov 1855 Lexington, NC; d 22 Jul 1930 Bowie, TX.
9. **PRATER**, Nancy Emaline; b 13 Jun 1864, Batesville, AR; d 1952 Bowie, TX.
10. **DORSEY**, Frank Milton; b 05 Jan 1862 Carrollto, MS; d 25 Feb 1896.
11. **NORVELL**, Rhoda Alice; b 26 Jan 1862; d 02 Apr 1918; m May 1886.
16. **YOUNG**, James Alexander; b 03 Feb 1831, Lexington, NC; m 24 Jul 1850; d 13 Dec 1910 Lexington, NC.
17. **HEDRICK**, Elizabeth Sherwood; b 02 Feb 1831; d 10 Mar 1910 Lexington, NC.
18. **PRATER**, Holly Franklin.
19. **HESTER**, Louisa Frances; d Bowie, TX.
20. **DORSEY**, Nathan J.; 1872 MS.
21. **MCGEHEE**, Martha; d 1867.
22. **NORVELL**, John Parks; b 1829.
23. **LAWRENCE**, Louise.
32. **YOUNG**, Andrew; b 17 Mar 1806; d 24 Jun 1877 Lexington, NC.
33. **ROTAN**, Margaret A. (M.); b 15 Jun 1813; d 19 May 1902.
34. **HEDRICK**, John Leonard; b 08 Jul 1804; d 24 Oct 1899.
35. **SHERWOOD**, Elizabeth; b 1805; d 1842.
38. **HESTER**, Franklin; d 1842 Myron, AR.
39. **JACKSON**, Wincy Elizabeth; b 04 Nov 1815 Paris, Henry Co., TN; d 09 Dec 1891 Bowie, TX.
64. **YOUNG**, Barnett; b 1777-1784; d 15 Jan 1827.
65. **SCHWEISGUTH/SWICEGOOD**, Catherine.
68. **HEDRICK Jr.**, Adam; b 26 Aug 1788.
69. **LEONARD**, Susannah.
70. **SHERWOOD**, Benjamin.
71. \_\_\_\_\_, Elizabeth(?).
78. **JACKSON**, Miles; b VA; m TN; d Izard Co., AR.
79. **SIMMONS**, Allena.
3. **NOBLE**, Evelyn Violet; b 09 Nov 1900 Maxville, Stafford, KS; d 17 May 1978 Orange Co., CA; m 24 Nov 1924 Corona, Riverside, CA.
4. **HAYES**, Charles David; b 26 Jan 1873 NY; d 07 Nov 1953 Orange Co., CA; m 19 Mar 1898 Clark Co., WA.
5. **STURGESS**, Mabel; b 09 Apr 1876 Clark Co., WA; d 07 Nov 1953 Orange Co., CA; m 19 Mar 1898 Clark Co., WA.
6. **NOBLE**, Claude Elmer; b 04 Jul 1878 LaHarpe, Hancock, IL; d 01 Jan 1946 Vista, San Diego, CA; m 04 Jul 1898 Monmouth, Warren, IL.
7. **MAYBEE**, Mary Jane; b 18 May 1878 McKinney, TX; d 24 Nov 1952 Santa Ana, CA; m 04 Jul 1898 Monmouth, Warren, IL.
8. **HAYES**, Franklin Smith; b 27 Jun 1836 Cumberland Co., ME; d 19 Apr 1922; m 07 Jun 1858.
9. **ATTIX**, Eleanor Elizabeth; b 01 Mar 1841 Elain, Kane Co., IL; d 1925 Clark Co., WA; m 07 Jun 1858.
10. **STURGESS**, Andrew Jackson; b 04 Jun 1834 Allegany Co., NY; d 28 Mar 1898 Clark Co., WA; m1 Susan **PATTERSON** 30 Aug 1855 Clark Co., WA; m2 Rosa M. **ARMSTRONG** 07 Apr 1877; m3 Anna M. **FIELD** 22 Mar 1890 Clark Co., WA.
11. **PATTERSON**, Susan; b 14 Aug 1839 IL; d 18 Apr 1876 Clark Co., WA; m 30 Aug 1855 Clark Co., WA.
12. **NOBLE**, Joseph Harvey; b 26 Mar 1853 Brown Co., OH; d 1938 Corona, CA; m 13 May 1877 Alexandria, MO.
13. **HUNT**, Ida Caroline; b 24 Jan 1861 LaHarpe, IL; d 1960 Corona, CA; m 13 May 1877 Alexandria, MO.
14. **MAYBEE**, Henry; b abt 1850 OH.
15. **KAIN**, Mary Ann; b abt 1850.
16. **HAYES**, David; b 11 Jul 1795 No. Yarmouth, ME; d 26 Mar 1870 Saccarappa, ME; m 28 Sep 1826.
17. **WEBB**, Nancy; b 27 Aug 1805; d 25 Jan 1887 Saccarappa, ME; m1 Isaac **FARNSWORTH** bef 1826; m2 David **HAYES** 28 Sep 1826.
18. **ATTIX**, William Chance; b 26 Aug 1816 NY; d 22 Nov 1876 Champaign Co., IL; m 01 Jan 1840.
19. **BROWN**, Cordelia Ann; b 22 Oct 1823 NY; d 14 Jul 1854 Kane Co., IL; m 01 Jan 1840.
20. **STURGESS**, David; b 11 Jun 1797 Ballston Springs, NY; d 16 Oct 1854 Clark Co., WA; m 29 Oct 1829 Allegany Co., NY.
21. **MINTON**, Adelaid; b 08 Jul 1810 NY; d 31 Jul 1876 Clark Co., WA; m1 David **STURGESS** 29

---

Ancestor Chart of

**Verla Jean (HAYES) LEETCH**

345 Canyon Rd, Julian, CA 92036-9313

1. **HAYES**, Verla Jean; b 02 Jul 1926 Orange Co., CA.
2. **HAYES**, John David; b 22 Jul 1900 Clark Co., WA; m 24 Nov 1924 Corona, Riverside, CA.

- Oct 1829 Allegany Co., NY; m2 George **BEATTY** 02 Aug 1855 Clark Co., WA.
22. **PATTERSON**, Ira; b 10 Jun 1800 Ulster Co., NY; d 30 Sep 1875 Vancouver, WA; m1 Martha **HALSTEAD** est 1828; m2 Rebecca **BROWN** 25 May 1857.
23. **HALSTEAD**, Martha; b 16 Jul 1806; d 09 Oct 1845 Mason Co., IL; m est 1828.
24. **NOBLE**, William; b 14 Dec 1811 Clermont Co., OH; m 09 Mar 1840 Clermont Co., OH.
25. **GILBRIST**, Mary; b est 182? NJ; m 09 Mar 1840 Clermont Co., OH.
26. **HUNT**, Joseph Rowand; b 11 Jan 1833 Solon, OH; d 30 Jan 1886 Windom, KS; m 29 Mar 1855 Rarita, IL.
27. **DUNCAN**, Elizabeth; b 30 Jan 1838 McDonough Co., IL; m 29 Mar 1855 Rarita, IL.
34. **WEBB**, Johathan.
35. **SMITH**, Susanna.
70. **SMITH**, John.
71. **MAN**, Jemima.
10. **ROYCE**, Charles Alonzo; b 17 Dec 1862 PA; m 10 Jul 1888 Fairbury, Jefferson Co., NE; d 01 Sep 1903 Edson, Sherman Co., KS.
11. **WORLEY**, Martha Alice; b abt Oct 1865 Clinton, IN; d 28 Mar 1939 Van Wert, Van Wert Co., OH.
12. **LOUDON**, Thomas H.; b Henry Co., KY; d Corbett, Multnomah Co., OR.
13. **SHAW**, Cynthia Jane; b abt 173?; d Cornelius, Washington Co., OR.
14. **HUTCHINSON**, David Isom; b 27 Apr 1849 MO; m 30 Sep 1872; d 24 Dec 1898 Canby, Clackamas Co., OR.
15. **BONNEY**, Flora Miranda; b 13 Nov 1856 Marion Co., OR; d 12 Jul 1918 Hubbard, Marion Co., OR.
16. **GREGORY**, William; b 24 Aug 1822 OH; d abt Jul 1903;
17. **FAUNCE**, Dilinda; b 20 Apr 1829 OH; d 16 Mar 1918.
20. **ROYCE**, Albert Bert; b 21 May 1839 LeRoy, Bradford Co., PA; m 09 Dec 1860 LeRoy, Bradford Co., PA; d 22 Jun 1910 LeRoy, Bradford Co., PA.
21. **WEBBER**, Mary (Polly); b 08 Jan 1843 PA; d 28 May 1901 Western, Saline Co., NE.
24. **LOUDON**, John; d Jackson Co., OR.
25. **SMITH**, Margaret; b abt 1798 Jackson Co., OR.
26. **SHAW**, James; b abt 1824 Edgar Co., IL; m 05 Jun 1845 Shelby Co., MO; d Milton-Freewater, OR.
27. **BAKER**, Alsha Katherine; b abt 1824 KY; d 31 May 1913 Milton-Freewater, Umatilla Co., OR.
28. **HUTCHISON**, Elijah Dow; b abt 1824 OH.
29. **POWERS**, Lucetta Marilla.
30. **BONNEY**, Jarius II; b 14 Oct 1792 Cornwall, Litchfield Co., CT; m 27 May 1830/32 Erie, Erie Co., PA; d 16 May 1856 Hubbard, Marion Co., OR.
31. **ELKINS**, Jane; b 11 Mar 1809, New York, NY; d 22 Aug 1889 Waumic, Wasco OR.

Ancestor Chart of  
**Maryalice (GREGORY) GORDON**  
 PO Box 65411, Vancouver, WA 98665

1. **GREGORY**, Maryalice Belle; b 16 Mar 1936 Astoria, Clatsop Co, OR.
2. **GREGORY**, Archie LeRoy; b abt 1911 NE; m 28 Aug 1933 Santa Anna, Orange Co., CA; d abt 1990 Thayer, Neosho Co., KS.
3. **LOUDON**, Rose (Phaye); b 05 Feb 1908 Cornelius, Washington Co., OR; d 12 Jun 1986 Portland, Multnomah Co., OR.
4. **GREGORY**, David William; b 11 Jul 1889 IN; m Danville, Hendricks Co., IN; d abt Mar 1972 IN.
5. **ROYCE**, Ettie Belle (Loretta); b 15 Apr 1891 Thomas Co., KS; d abt Dec 1975 Danville, Hendricks Co., IN.
6. **LOUDON**, James Nathaniel; b 04 Apr 1869 Linn Co., OR; m 01 Oct 1904 Washington Co., OR; d 13 Dec 1944 Hillsboro, Washington Co., OR.
7. **HUTCHINSON**, Rhoda Perseat (Esther); b 03 Oct 1883 Marion Co., OR; d abt 1954 Sherwood, Washington Co., OR.
8. **GREGORY**, George Tom; b 24 Mar 1864 Wyoming, Otoe Co., NE; d 19 Feb 1950.
9. **WILSON**, Mary Ann; b 24 Mar 1864; d 24 Apr 1924.

The End



**SURNAME FILE**

by Delillah Knight

CCGS members have been requested to submit surname cards and ancestor charts. The surname cards are added to the surname index available to researchers visiting the CCGS library. Delillah Knight selected enough entries to fill four pages of the *Trail Breakers* for publication. Roy Katschke takes submitted ancestor charts and formats them for the Ancestor Charts section of our quarterly. Members are encouraged to update their information when appropriate.

|          |                                                                                                                                                                                                                                                                                    |                    |
|----------|------------------------------------------------------------------------------------------------------------------------------------------------------------------------------------------------------------------------------------------------------------------------------------|--------------------|
| BENNETT  | James m in England 1659 d 1659 Fairfield Ct., Thomas Ib 1665 fairfield, Ct., Thomas II b 1642 Concord Ma d 1704 Fairfield, Ct., Deliverance b 1688 Fairfield, Ct. d 1761 Weston, Ct., Sarah 1716-1761                                                                              | <u>OMAN</u>        |
| BENNETT  | Priscilla (1632-1663) m Wm. CARPENTER 1651; Edward (7-1646) (Weymouth & Rehoboth, MA.)                                                                                                                                                                                             | <u>KUECHMANN</u>   |
| BENTON   | Edward, Guilford, CT; Edward (1638-1698) d Wethersfield, CT; Eleanor (1670-1749)                                                                                                                                                                                                   | <u>OMAN</u>        |
| BENTON   | John Wilson b 1780 VA, mov GA ca 1810 Jackson Ct, m Sophia JACKSON 26 Feb 1817. Need info aft 1828.                                                                                                                                                                                | <u>FISH</u>        |
| BENTON   | Nannie Lee Anna 1879-1963 Ark, Wa. m Thomas Wesley LEWIS, John Washington 1839-1906 Ga, Ark m Malinda E.WILSON, John Wilson b 1780 Va.                                                                                                                                             | <u>FISH</u>        |
| BERG     | Hans Hansen (1839-1909) Nor, MN.                                                                                                                                                                                                                                                   | <u>STOUT</u>       |
| BERKELEY | Elizabeth b early 1500's Eng, m Thomas THROCKMARTIN Eng bef 1542, d Eng.                                                                                                                                                                                                           | <u>FISHER</u>      |
| BERRY    | Mary Ann, b 1836 Indianapolis, Marion Ct., IN, m/1 26 Apr 1856 John H. JOHNSTON/JOHNSON, Madison Ct., IA m/2 11 Feb 1864 Thomas RUNKLE, Madison Co., IA, d 1914 Patterson, Madison Co., IA.                                                                                        | <u>FISHER</u>      |
| BERRY    | Rebecca Sophia, b 6 April 1866 Iowa City, IA, Johnson Ct., m/1 Benjamin Franklin VASSAR 15 Mar 1885 Council Grove, Elm Creek Twp. Wilsey, Morris Ct., KS, m/2 SWITZER ?, m/3 Andrew LEUTHOLD, d 13 Apr 1954 Salem, Marion Ct., OR; R.C. BERRY (female) age 8 yrs. 1875. b 1867 IA. | <u>VASSAR</u>      |
| BERRY    | Tabitha, b 1830 OH (age 45 1875 cen) IA, KS. See KS ST CEN REC (1875) Elm Creek Twp, Wilsey, Morris Ct., KS. No rec of fam in 1870 cen - KS.                                                                                                                                       | <u>VASSAR</u>      |
| BESSEY   | Sarah, m Joseph STURTEVANT.                                                                                                                                                                                                                                                        | <u>WORTHINGTON</u> |
| BEST     | Elizabeth, b ca 1502, m bef 1528 Thomas WHITCOMB.                                                                                                                                                                                                                                  | <u>FISHER</u>      |
| BEST     | Hattie May. See: CARLILE, Benjamin Robert.                                                                                                                                                                                                                                         | <u>GORDON</u>      |



- BEST Roger, b ca 1470-80, m ca 1500, dau Elizabeth, b 1502. FISHER
- BEST William Kidd, b Feb 1837 Oswegatchie, SL, NY, m 14 Aug 1869 Elizabeth Evangeline MC NABB (b 17 Jun 1853, Durham, ONT, d 2 Jun 1928 Kansas City, Jackson Ct., MO) Claytonville, Brown Ct., KS, d 6 Aug 1918 Jamestown, Cloud Ct., KS. GORDON
- BETTINGER Elizabeth. See: KUCKER, Abraham. FISHER
- BETTS Molly, m Isaac RUGGLES, liv Colesville, NY 1795. HARRIS
- BEVERLEY Robert; Peter; Elizabeth, m Wm. RANDOLPH II va 1705. OMAN
- BEYHAN Catherine (BAHAN) See: MAHAN, James. HURLEY
- BHUSS Arret ten, b unk, m Johanna im HOEF (?) prob 31 Jan 1604 Monchen-Gladbach, Ger. Peter, Adrian, s, d 15 May 1718, Wilhelm, b 15 Dec 1686, d 15 Jun 1738; Thomis (Antonius), s, b 27 Sep 1755, d 5 Apr 1842; Math, Christian, s, b 24 Jun 1794, d 3 May 1871. ALLRED
- BICKLE/BICKEL Adelbert, b Worms, Ger, d VA. GEOGHEGAN
- BICKLE/BICKEL Anthony, b 1790 VA, m Dinah CHAPPELL/CHAPEL Jan 1814 VA, d 24 Mar 1860 OH. GEOGHEGAN
- BIDDLECOME Olive Jane. See: PARKER, John. ERVEN
- BIESECKER Florence Amanda. See: BALL, Hugh. PIONTEK
- BIESECKER Ira Sylvester, b 8 Apr 1849 Scranton, PA, p Jacob/John BIESECKER & Matilda SWARTZ, m Amanda Samantha ROSMAN (b 6 Jan 1848, NY, p George ROSMAN & Samantha HILLIARD, d 14 Jun 1918 Yacolt, Clark Co., WA, but Jun 1918 Mt. View Cem, LaCenter, WA) 30 May 1869 Buffalo Co., WI, d 17 Aug 1924 Vancouver, Clark Co., WA, bur Jun 1918 Mt. View Cem, LaCenter, WA. PIONTEK
- BIESECKER Jacob/John, b 21 Oct 1809 Ger, p John BIESECKER & Sillipean REIGEL, Matilda SWARTZ. PIONTEK
- BIGELOW - NJ. BAKER
- BIGELOW John, b 16 Feb 1616/17 Wrentham, Co. Suffolk, Eng, m 30 Oct 1642 Mary WARREN, Watertown, MA, d 14 Jul 1703 Watertown, MA. FISHER
- BIGELOW/BAGULEY Ralph, b 1500 Ollerton, d 1540. FISHER
- BIGELOW/BAGULEY Randoll, b abt 1526 Ollerton, m abt 1550 to Eleanor, d 1556. FISHER

- BIGELOW/BAGULEY Randle, b ca 1586 Eng, m bef 1616 to Jane, d  
17 May 1626 Wrentham, Co. Suffolk, Eng. FISHER
- BIGELOW/BAGULEY Robert, b abt 1556 Ollerton, d 4 Nov 1582 Knuts-  
ford. FISHER
- BIGELOW Samuel, b 28 Oct 1653 Watertown, MA, m MFary FLAGG 3  
Jun 1674 Watertown, MC, d 1732 Watertown, MA. FISHER
- BIGELOW Sarah, b 1 Oct 1681 Watertown, MA, m 14 Jun 1700  
Josiah HOWE, Marlboro, MA, d prob Marlboro, MA. FISHER
- BIGG Mary b Ca Oct 1688, d 1761 Weston, Ct. OMAN
- BILL/BILLS  
Philip, b Ca 1620 Eng, d 1689 Ct, m Ca 1657, m Anna  
Hannah WAITE, John, b 1667 Ct/Mass, d 1739 Bt., m  
Mercy FOWLER, Benajah, b Ca 1715 Vt, d 1776 Vt,  
m Mary, Eliphalet, b 1750 Vt, d 1825 Vt, m 1772,  
m Dorothy MARSH, Benajah, b Ca 1773 Vt, d 1851 Canada  
m Hannah UDALL, Erastus, b Ca 1800 Vt, d 1869 Wis,  
m 1830/31 Canada, m Roxanna (Roxey) HALL, Ira George,  
b 1841 Canada, d 1923 Wa, m 1869 Wis, m Ella Gertrude  
PERKINS, Ira Perkins, b 1887 Or, d 1960 Wa, m 1918 Wa,  
m Minnie Lenora PERDUE, Philip, b Ca 1620 Eng, d 1689  
Ct, mca 1657, m Anna Hannah WAITE, Samuel, b Ca 1665,  
Ma, d 1729 Ct, m Mercy HAUGHTON, Mercy, m Joseph  
MARSH Sr. ANDERSON
- BILLING Northants England 1430, Deanes England 1600's,  
Dorchester, Ma 1657, North Stonington, Ct 1712 FINLEY
- BILLING Abigail 1677-1705 Ct, m John RANDALL Jr, William  
1628/9-1712/3 Eng Ct. m Mary FINLEY
- BILLINGS George All b 3 Aug 1825 Blaby, Leicheshire, Eng, p  
Richard BILLINGS & Elizabeth ALL, m 3 Nov 1873 Salt  
Lake City, UT Barbara Canmon PENMAN (b 10 Aug 1844  
Boland, Fifeshire, Scot, p Andrew PENMAN & Euphania  
REID, d 25 Apr 1886 Ogden, UT) d 10 June 1901 Ogden,  
UT. Children: Richard Gilbert b 12 June 1877 West  
Weber, UT, m Katherine JOHNSON, d 24 Feb 1935; Mary  
Jane b 2 June 1880 West Weber, UT, m 13 Nov 1899  
m 13 nov 1899, Barnabus Bradburn, d 03 jun 1956  
Imola, Ca., Elizabeth, b 09 aug 1883, West Weber, Utah  
m John Thomas Davis, d 19 apr 1966 Ogden Utah, Euphania  
b 23 may 1885, West Weber, Utah, d 18 aug 1885, West  
Weber, Ut. JONES
- BISTER Marvin Lorraine, b 26 apr 1934 Port Angeles, WA,  
p Conrad BISTER & Elizabeth Laura STROUP, m Jacquelyn  
May ANDERSON (b 19 Dec 1941 Vancouver, WA, p Johnnie  
Melvin ANDERSON & Edna May IRVING) children: John, b  
24 Jan 1961; Marvin Loren b 10 Mar 1962; Elizabeth May  
(KADOW) b 23 Aug 1963; Christina Lynn, b 24 Jul 1967. BISTER
- BLACK Samuel Raymond, b 1860, m Anna MATSON (b 1863), bur

Southside Cem, Pittsburg, PA ?, children: Alice 1883;  
 Florence 1891; Raymond 1895; Elenor/Eleanor 1897 m COPE  
 John Calvin Sr. 1900, m Lucinda R. LOWE; Charles 1902. WADE

BLACKWELL Elvira, b 20 Apr 1836 Crawford Co., MO, f Richard H.  
 BLACKWELL, mo Nancy MC PHEETERS McKee, m Andrew Hutchi-  
 son MC KEE 21 Jul 1857 Henry Co., MO, d 7 Jul 1914 Che-  
 latchie Prairie, WA (Amboy), bur Chelatchie Cem. BAUER

BLACKWELL Richard H., b VA, m Nancy MC PHEETERS MC Kee 11 Nov  
 1829 Jessamine, KY. BAUER

BLAIR SC, AL, MS. BAKER

BLANDON ca 1810 VT. KORFF

BLAZER Adam, b 5 Jan 1812 Poulding Co., OH, m/1 Mary Ann  
 GRIFFIN 186?, m/2 Eusebia bef 1905. KATSCHKE

BLAZER David Franklin, b 5 Sep 1861 OH, p Adam BLAZER & Mary  
 Ann GRIFFIN, m Eliza Catherine EICHHOLTZ (b 27 Jan 1862  
 York Co., PA, p Benjamin EICHHOLTZ & Sarah Ann SIPE(S)  
 d 11 Feb 1937 Oklahoma City, OK, bur Payne Co., OH) ca  
 1878, d 2 Aug 1941 Oklahoma City, OK, bur Payne Co., OH  
KATSCHKE

BLAZER Mary Jane Frances, b 2 Jun 1884, m George Franklin  
 TOLLE 1903 Purcell?, OK, d Oct 1907 Choctaw, OK. KATSCHKE

BLAZER Mary Jane Frances. See TOLLE, George Franklin. KATSCHKE

BLECKMAN Gertrude. See: DIEDERICHES, Wilhelm II PIONTEK  
 BLECKMANN

\* \* \* \* \*

#### ADDRESSES OF SUBMITTERS

ALLRED, Lora S. 312 NE 111th Street, Vancouver, WA 98685-3924  
 BAKER, Barbie 10405 NW 15th Avenue, Vancouver, WA 98685-5177  
 BAUER A. Patricia Post Office Box 1751, Vancouver, WA 98668  
 BISTER Jacquelyn 11713 NE 199th Street, Battle Ground, WA 98604  
 ERVEN, Beverly Ann 16100 NE Charlson Drive, Battle Ground, WA 98604  
 FISH, EURAH 1710 X Street, Vancouver, WA 98661-4041  
 FISHER, Robert & Ruth 714 W 43rd St., Vancouver, WA 98660-1657  
 GORDON, Robert C. Post Office Box 65411, Vancouver, WA 98665-0014  
 HARRIS, Frances 3008 SE 154th Avenue, Vancouver, WA 98684-5188  
 HURLEY, James E. 104 SE 95th Avenue, Vancouver, WA 98664-3416  
 JONES, Barbara J. 770 Juntura Street SE, Salem, OR 97302-3565  
 KORFF, Betty 7549 Carolina Lane, Vancouver, WA 98664  
 KUECHMANN Gene S. 8113 NE 25th Avenue, Vancouver, WA 98665-9726  
 OMAN, Kitty 8701 NE Pierce Drive, Vancouver, WA 98662-6563  
 PIONTEK, Herman 967 Fifteenth Street, Washougal, WA 98671  
 STOUT, Steve & Nancy 16313 NE Caples Road, Brush Prairie, WA 98606  
 VASSAR, R. Maxine 23106 NE Rawson Road, Brush Prairie, WA 98606-9623  
 WADE, Claudia D. 2111 NE 160th Avenue, Vancouver, WA 98684

# QUERIES

Queries are read by researchers in all regions of the United States and parts of Canada. The *Trail Breakers* is sent to research libraries and genealogical societies throughout the country. Queries are free to all genealogists. Send your query to *Queries Editor, Clark County Genealogical Society, P.O. Box 2728, Vancouver, WA 98668.*

ROGERS  
RODGERS  
LEA  
LAY

Living in Gasconade, Osage and Maries Counties Missouri in 1840-1870 are brothers Alexander (b.1804), Valentine (b.1812), Elisha (b.1814), Doswell (b.1825), Joseph (b.1817), and perhaps Thomas ROGERS. Living near are Willis LEA/LAY (b.1800), wife Drusilla (b.1801) and married sons Louis and Alexander. Is Drusilla A. ROGERS and sister related to the ROGERS? Alexander and Elisha helped settle estate of Willis LEA 1851. Would appreciate any information connecting LEA and ROGERS families.  
*Val Dahlgren, 10680 S.W. Highland Dr, Tigard, OR 97224.*

HOWARD  
RATLIFF  
ELLSTON  
LEWIS

John B. HOWARD (b. 1784 NJ) and wife Deborah (b.1795 VA) lived Stark Co., IL in 1850. Known children are: Mary RATLIFF or ELLSTON, Ellender LEWIS, David and Wm. Lockwood. Possibly four others, 1 male, 3 females. Would like their names, also maiden name of Deborah. She d. 1876, buried Chariton Co., MO. Do not believe she died there. Where is John B. HOWARD.  
*Val Dahlgren, 10680 S.W. Highland Dr, Tigard, OR 97224.*

WOMELSDORF

WOMELSDORF Family Association tries to trace lines that have emigrated to America; they also network with the German WOMELSDORF Association.  
*Carole Komarek, 215 W. Park St., Arlington Heights, IL 60005.*

BURT  
MUNN

Looking for information on the Munsell M. BURT family. Munsell BURT (b. NJ), wife Hannah MUNN (b. OH). Their sons Munsell M. BURT d. 27 Sep 1895, Vancouver, WA, at the age of 73 years; he was b. Scioto Co, OH c.1822.  
*Jan BURT, (503)636-5939, 2134 Wembley Park Rd, Lake Oswego, OR 97034.*

DANIEL(S)  
SPEAR  
MCRAE  
FRYER  
WALL  
MITCHELL  
ALLEN  
FOWLER

Searching for info on Walter DANIEL and wife Sarah (Sallie) SPEAR. Daughter of Mary Sarah ? and ? SPEAR. Walter DANIEL (b. c.1882 TX) m. c. 1900 TX Sallie SPEAR (b. 1883 TX, d. c.Mar 1915). Children: 1. John William (b. c.1901) m. Ruth MCRAE, 2. (twin) Vera (b. 20 Nov 1903) m. John Andrew FRYER, 3. (twin) Vena Gladys (b. 20 Nov 1903, d. 22 Jan 1992, Shamrock, Wheeler Co., TX) m. Thomas WALL c. 1927, 4. George Henry (b. 6 Aug 1906, d. 5 Apr 1988, Shamrock, Wheeler Co., TX) m. Bobbie ?, 5. Charles Edward (b. 10 Apr 1908) m. Ida MITCHELL, 6. Walter Myers Daniel (b. 15 Apr 1913) m. Mary ALLEN, and 7. Sarah Eunice "June" (b. 10 Mar 1915) m. Leslie FOWLER. Who were Walter's parents? Who were Sarah's parents? When and where did Walter die? Will exchange and answer all mail.  
*Sharon Wodtke, 12918 N.E. 7th Ave., Vancouver, WA 98685-2659.*

KEINE  
KELINE  
CHURCH  
JOHNS

I believe my ancestors are Henry and Hannah (KEINE) CHURCH. Henry (b. c. 12 Dec 1750, Suffolk, England) m. Hannah KEINE/KELINE (Quaker, b. c.1755 Chester Co., Pennsylvania). Henry, a British soldier captured and sent to prison at Camp Chase, near Lancaster, PA. They m. and settled in Hundred, Wetzel Co., WV c. 1782. They had at least 8 children: 1. William Clark (b. c.1782) m/2 Elizabeth JOHNS; 2. Eliabeth (b. c.1784), 3. James (b. C.1789), 4. Henry Jr. (b. c.1793), 5. Elsie (b. c.1799), b. Sarah "Sally" (b. c.1802), 7. Hannah (b. c.1806), and 8. Annie (b. c.1808). I am trying to find out more about Hannah and Henry.. Who were Hannah's parents? Date married and where? Where in Suffolk was Henry born?  
*Sharon Wodtke, 12918 N.E. 7th Ave., Vancouver, WA 98685-2659.*

CHURCH  
JOHNS

First born son of Henry & Hannah CHURCH was William (b. c1782) who m./2. 3 April 1828 Elizabeth JOHNS of Pendleton Co., WV. They also had a William (b. June 1832,



**HAGERMAN  
COOPER**

Pendleton Co., WV) who m/2. 28 June 1866, Margaret Jane COOPER, daughter of John D. and Sarah (HAGERMAN) COOPER of Mason and Tyler Cos. WV. Who was William Sr. first wife? Where there any children from his first marriage? Who were William Sr and Elizabeth JOHNS-CHURCH'S other children? Who was William Jr.'s first wife and where there any children from that marriage.  
*Sharon Wodtke, 12918 N.E. 7th Ave., Vancouver, WA 98685-2659.*

**KERR  
RODDEN  
PHILPOTT**

Need information for Charles Edgar KERR and Gertrude Edna RODDEN who probably married about 1900-1902 Lincoln, Placer Co. CA. They had three children: Wendell Homer KERR (b. 25 April 1903, Lincoln, Placer Co., CA) m. 5 Sep 1925 at Randolph, Coos Co, OR to Rose PHILPOTT (b. 21 Jan 1904, Irma Taney Co, MO); Anita Eleanor KERR (b. 27 Aug 1908, probably Lincoln); and Evelyn KERR (b. 2 Oct 1914, perhaps Sacramento). The family spent some time in Eureka, CA, before moving to Sacramento.

*Jane Germann, (206)892-8019, 10209 N.E. 157 Ave., Vancouver, WA 98682.*

**MISSOURI EXCHANGE PERIODICAL YIELDS GREAT FIND!**

Discovered my great grandfathers, brothers, great-granddaughter living in Illinois thru my mother's cousin's wife living in Iona. She keeps me posted on my Grandmother's youngest brother - now 97 years old - who is the only living child (?) of a family of 17 children on my great-grandparents. This discovery through a Missouri periodical. Also am writing to my father's long lost cousin's daughter in Michigan and she has put me in contact with another cousin living in Florida. This through our census books. Then through our new clippings, I discovered eighteen cousins living in Washington and Oregon - all from an obituary! *Carol Huesser, P.O. Box 167, De Beque, Co 81630-0167, (303)464-5759.* [We miss Carol's smiling face around our society and hope a society near her new home benefits from her energy and helpfulness!]

**ANOTHER PERIODICAL HUGE SUCCESS!**

As a result of our Periodical Exchange, I have been in contact with three distant cousins and found information about twelve of my great-grandfathers! A huge success for me. *Fred N. Smith, 13608 N.W. Indian Spring Dr., Vancouver, WA 98685*

**ANCESTOR CHARTS PUBLISHED IN TRAIL BREAKERS LEADS TO OTHER FAMILY MEMBERS!**

After my ancestor's charts were published in the *Trail Breakers*, we were contacted by a cousin related through Dale's mother's family, NAGEL. This cousin lives at Sutherlin, OR (Fay Enlow - now a [1993-94] member of CCGS -). Besides one personal sharing visit, we've kept the mail hot as we each make new discoveries. [A note for a NAGEL family reunion in July was included, check with Erdine for information of future reunions.] *Erdine Nugent, 907 - 346th Place, Ocean Park, WA 98640-9037.*

**MAYFLOWER CONNECTIONS**

CCGS member Judith Lynn Rogers has been able to apply for Mayflower membership because of inquiries. She received 82 pages in answer from one person and 35 from another. She adds that being a member helps keep her interest, gives her new ideas and sources to check. She'll let us know when she gets her final OK with the Mayflower society. Her line includes Billington, Sabin, Kingsley, Hicks, Davis, Gilderleeve, Owens, and Cox, which is her maiden name.  
*Judith Lynn Rogers, (206)687-2292, 26709 NE 120th Ave, Battle Ground, WA 98604*

**DON'T GIVE UP ON YOUR NAME!** I found out by searching one more spelling variation that I indeed was the great granddaughter of Fannie Alice Thompson & Sarah Tomson's great-great-great-great- taking me to Hannah Howland, daughter of the Mayflower immigrant & John Howland and his wife Elizabeth (Tilley) Howland. *Nadine A. Mikesell, 101 N.E. 108th St., Vancouver, WA 98685-5257, (206)574-5041.*

## NEW CCGS MEMBERS:

### NEW MEMBERS:

L-048 **LAWRENCE**, Jim E.  
206-750-8551  
1809 NE 49th St.  
Vancouver, WA 98663-1370

L-047 **LOOMIS**, Ellen L.  
206-206-3583  
1700 SE 146th Ct  
Vancouver, WA 98684

P-034 **PARVIN**, Pauline F.  
206-835-8620  
1616 NE 332 Ave  
Washougal, WA 98671

P-035 **PETERSON**, Robert  
206-687-1301  
14713 NE 269th St.  
Battle Ground, WA 98604

R-077 **RHODES**, Esna Cleo  
206-263-2122  
6607 NE J.R. Anderson Rd  
La Center, WA 98629

### CONTRIBUTING:

C-044 **CARD**, Judy  
206-225-9212  
37001 NW Pacific Hwy  
Woodland, WA 98674

### RENEWALS:

A-038A **ADLER**, Artyce Smith &  
David L. 206-693-5153  
408 W 25th St  
Vancouver, WA 98660

B-074 **BELISLE**, Ronald H.  
206-834-2126  
324 NE Oak St.  
Camas, WA 98607-1499

B-069 **BURTON**, Rosemary  
206-835-3436  
36017 NE Washougal River Rd  
Washougal, WA 98671-9537

B-098 **BRUNNER**, Jane  
503-621-3557  
14214 NW Charlton Rd  
Portland, OR 97231-1402

E-015A **EKENBECK**, Robert W.  
& Clarice M. 206-263-2519  
6813 NE 384th St  
La Center, WA 98629

G-049 **GARD**, Betty  
206-225-8578  
PO Box 248  
Woodland, WA 98674-0248

G-051 **GILROY**, Corrine M.  
206-687-3485  
423 E 5th St  
Battle Ground, WA 98604-9130

J-018 **JOHNSON**, Dora E.  
206-737-0624  
5575 E Evergreen Blvd #4201  
Vancouver, WA 98661-6646

K-051 **KALLIO**, Dolores W.  
206-225-7848  
5105 NE Cedar Creed Rd.  
Woodland, WA 98674-2600

M-008 **MORGAN**, Lena  
206-698-3022  
PO Box 672  
Battle Ground, WA 98604-0672

R-015 **REPMAN**, Dolores N.  
206-892-7595  
10108 SE 10th St  
Vancouver, WA 98664

R-030 **ROGERS**, Judith Lynn  
206-687-2292  
26709 NE 120th Ave.  
Battle Ground, WA 98604

S-062 **SNELL**, Mary  
PO Box 1404  
Battle Ground, WA 98604-1404

S-082 **SPRAY**, Elaine J.  
206-574-4624  
6111 NE 139th St  
Vancouver, WA 98686

S-094 **SCHUTTE**, Sharon  
206-696-9884  
5505 E Evergreen Apt 108  
Vancouver, WA 98661-6643

T-020 **TURNER**, Germaine  
206-573-5445  
1105 NE 126th St  
Vancouver, WA 98684-3129



## genealogical helper helped!

As a fairly new member, I took home a few copies of *Genealogical Helper* when the 1980 editions were being "given away" last year. A **William Owen Barlow** was listed, so on chance, I wrote the submitted. She had moved, but the letter was forwarded. Her husband's great grandfather and my great grandfather were brothers? She supplied three generations of names, birth dates, including siblings! Wow! One never knows what whim may bring us genealogist progress! *Marge van Nus, 1521 NE 97th Ave., Vancouver, WA 98664-3035.*

## INDEX

## - A -

ABT, 26  
 ADAMS, 23  
 ADLER, 40  
 AFTON, 18  
 AIRMET, 9  
 ALBRIGHT, 13  
 ALEXANDER, 13  
 ALFRED, 14  
 ALLEN, 12, 38  
 ALLRED, 35  
 ALLMENDINGER, 31  
 ALLRED, 28, 35, 37  
 ANCLIFFE, 30  
 ANDERSON, 19, 27, 36  
 ANDREAUX, 31  
 ANDREWS, 16  
 ARLIN, 31  
 ARMSTRONG, 32  
 ATTA, 30  
 ATTIX, 32  
 AUDREAUX, 31  
 AUGSPURGER, 15, 19  
 AUSTIN, 31  
 AXFORD, 12

## - B -

BAGULEY, 35, 36  
 BAKER, 14, 33, 35, 37  
 BALL, 31  
 BALL, 35  
 BANGS, 13  
 BARLOW, 40  
 BATES, 28  
 BAUER, 22, 37  
 BEALL, 26  
 BEATTY, 33  
 BELISLE, 40  
 BELKNAP, 23, 24  
 BENNETT, 34  
 BENTON, 34  
 BERG, 34  
 BERKELEY, 34  
 BERM, 12  
 BERRY, 34  
 BESSEY, 34  
 BEST, 34  
 BETTINGER, 35  
 BETTS, 35  
 BEVERLEY, 35  
 BEYHAN, 35  
 BHUSS, 28, 35

BICKEL, 35  
 BICKLE, 35  
 BIDDLECOME, 35  
 BIEGLOW, 35, 36  
 BIESECKER, 35  
 BIGG, 36  
 BILL, 36  
 BILLING, 36  
 BILLINGS, 36  
 BILLINGTON, 39  
 BILLS, 36  
 BILYEU, 14  
 BISTER, 36, 37  
 BLACK, 29, 36  
 BLACKWELL, 37  
 BLAIR, 37  
 BLANDON, 37  
 BLAZER, 37  
 BLECKMAN, 37  
 BLECKMANN, 37  
 BOENICKE, 29  
 BOERSMA, 13  
 BOLAN, 9  
 BONNEY, 33  
 BORTNIAK, 14  
 BOSCH, 28  
 BOUGHNER, 31  
 BOWSER, 30  
 BOZARTH, 8, 9, 10, 27  
 BRADLEY, 30  
 BRADY, 16  
 BRANCH, 31  
 BRANT, 27  
 BRATTON, 27  
 BROCK, 31  
 BROOKS, 11  
 BROWN, 17, 23, 24, 27, 32, 33  
 BROWNE, 11, 12  
 BRUNNER, 40  
 BRZOSKA, 14  
 BURTON, 40  
 BUSCH, 28  
 BUT, 38  
 BYRN, 31

## - C -

CANDIANI, 13  
 CAPLES, 8, 23, 25  
 CARD, 40  
 CARLILE, 34  
 CARPENTER, 34

CARROLL, 29  
 CASS, 12  
 CAVERLY, 31  
 CHAPEL, 35  
 CHAPMAN, 25  
 CHAPPELL, 35  
 CHARLEMAGNE, 14  
 CHORZEMPO, 19  
 CHURCH, 21, 38  
 CLAP, 19  
 CLARK, 12  
 CLAUDIA, 29  
 COLEMAN, 18  
 COOK, 12, 15, 23, 24, 30  
 COOPER, 29  
 COOPER, 39  
 COPE, 37  
 CORY-NYBLOD, 14  
 COSPER, 30, 31  
 COWAN, 26  
 COX, 19, 39  
 CRAIG, 24  
 CRAWFORD, 27  
 CRESAP, 30  
 CROMWELL, 21  
 CROZIER, 18, 20  
 CULP, 15  
 CÜRLIS, 28

## - D -

DAHLGREN, 38  
 DANIEL(S) 38 Dantin, 3  
 DAVIS, 29, 36, 39  
 DELINE, 38  
 DENISON, 8  
 DENNISON, 25  
 DIEDERICHES, 37  
 DILLON, 11  
 DORN, 13  
 DORSEY, 31, 32  
 DOUTHIT, 27  
 DuBOSE, 17  
 DUNCAN, 33  
 DUNLAP, 12  
 DURGAN, 24  
 DURGIN, 22, 27

## - E -

EBERT, 27  
 EDWARDS, 116  
 EEN, 25  
 EICHHOLTZ, 37

EISAMAN, 29, 30  
 EKENBECK, 40  
 ELKINS, 19, 33  
 ELLSTON, 38  
 ENLOW, 39  
 ERNST, 28  
 ERVEN, 35, 37  
 ERVIN, 31  
 EVERSON, 11

## - F -

FAME, 13  
 FARNSWORTH, 32  
 FAUNCE, 33  
 FERGUSON, 16  
 FETTER, 29  
 FIELD, 32  
 FINLEY, 36  
 FISH, 34, 37  
 FISHER, 23, 34, 35, 36, 37  
 FLAGG, 36  
 FORSYTHE, 21  
 FOUREY, 31  
 FOWLER, 36, 38  
 FRANTZ, 13  
 FRYER, 38

## - G -

GAMBEL, 29  
 GARD, 40  
 GARDNER, 8  
 GEOGHEGAN, 35  
 GERMANN, 2, 3, 5, 39  
 GIBBINS, 23  
 GILBRIST, 33  
 GILDERSLEEVE, 39  
 GILMAN, 11  
 GILROY, 40  
 GIVENS, 11  
 GLÜCK, 28  
 GOODWIN, 8, 27  
 GORDON, 33, 34, 35, 37  
 GRAF, 28  
 GRAFTON, 18, 19, 21  
 GRAHAM, 13  
 GRANT, 13, 24  
 GRAVES, 30  
 GREGORY, 33  
 GRIFFIN, 37  
 GRIFFIS, 17  
 GUELZOW, 28

**- H -**

HAGERMAN, 39  
HALL, 13, 21, 36  
HALSTEAD, 33  
HAMILTON, 25  
HAMMER, 23  
HARRINGTON, 12  
HARRIS, 2, 3, 5, 17, 35, 37  
HARSHMAN, 10  
HARTSON, 15  
HATFIELD, 24  
HATHAWAY, 27  
HAUGHTON, 36  
HAVEN, 31  
HAYDEN, 27  
HAYES, 32  
HEDRICK, 32  
HELSEL, 29  
HERMANN, 28  
HESTER, 32  
HEWITT, 25  
HICKS, 39  
HILL, 13, 15, 31  
HILLIARD, 35  
HINMAN, 17  
HITE, 30  
HODGE, 11  
HOEF, 28, 35  
HOFFMAN, 14  
HOLDIS, 10  
HOLTER, 21  
HOWARD, 25, 38  
HUESSER, 15  
HUESSER, 17, 21, 39  
HULSE, 20  
HUNT, 32, 33  
HURLEY, 35, 37  
HUTCHINSON, 33  
HUTCHISON, 33

**- I -**

INGALLS, 24  
IRVING, 36  
IRWIN, 31

**- J -**

JACKSON, 32, 34  
JENNINGS, 26  
JENSEN, 16  
JOHN, 8, 9, 10  
JOHNS, 38  
JOHNSON, 13, 17, 34, 36, 40  
JOHNSTON, 17  
JOHNSTON, 34  
JOHNSTONE, 17

JONES, 20, 23, 36, 37

**- K -**

KADOW, 36  
KAIN, 32  
KALLIO, 40  
KARKAU, 14  
KATSCHKE, 37  
KAUFFMAN, 30  
KEINE, 38  
KENDRICK, 12  
KERR, 39  
KEYES, 9  
KINGSLEY, 39  
KINNEAR, 16  
KNIGHT, 27, 34  
KNOWLES, 30, 31  
KOONTZ, 29  
KORFF, 37  
KRUCKMAN, 12  
KUCKER, 35  
KUECHMANN, 34, 37  
KUHNHAUSEN, 13  
KULLBERG, 8, 10  
KUNZMAN, 12

**- L -**

LaBELLE, 11  
LANCASTER, 23  
LANGBEHN, 16, 18, 20  
LANKFORD, 12  
LATTIN, 31  
LAWRENCE, 32, 40  
LAWYA, 22  
LAY, 38  
LEA, 38  
LEE, 27  
LEETCH, 32  
LEGG, 8  
LEONARD, 32  
LEUTHOLD, 34  
LEWIS, 34, 38  
LIESER, 12, 13  
LIKENS, 11  
LINDGENS, 28  
LINDH, 11  
LINDSAY, 21  
LISHEN, 22  
LOHMIRE, 26  
LOHRIRE, 26  
LOOMIS, 40  
LOUDON, 33  
LOVELACE, 27  
LOWE, 29, 30, 37  
LUDEMAN, 12  
LUDWIG, 28

**- M -**

MAILE, 28  
MALCOM, 14  
MALONE, 16  
MAN, 33  
MARBLE, 8  
MARSH, 20, 22, 24, 36  
MARSHALL, 19  
MARTIN, 8, 12, 30  
MASTERS, 30  
MATHER, 12, 13  
MATSON, 29, 36  
MAXON, 8, 27  
MAXWELL, 12  
MAYBEE, 32  
McAULEY, 26  
MCCLIFFE, 30  
McCONNELL, 27  
MCCORKLE, 31  
MCDANIEL, 29  
McDONALD, 23  
MCGEHEE, 32  
McGUIRE, 17  
McKEE, 37  
McNABB, 35  
McPHEETERS, 37  
McRAE, 38  
McSPARRON, 31  
McWATTLES, 11  
McWATTY, 29  
MEACHAM, 24  
MECHLING, 30  
MEEK, 8  
MEREDITH, 26  
MILLAR, 11  
MILLARD, 8  
MILLER, 27  
MINKLER, 13  
MINTON, 32  
MITCHAM, 13  
MITCHELL, 38  
MOCK, 29, 30  
MOOK, 13  
MORGAN, 40  
MORSE, 25  
MOSER, 21  
MUNN, 38  
MUNSON, 23  
MYLL, 13

**- N -**

NAGEL, 39  
NEWELL, 22  
NICHOLS, 11  
NIEBERDING, 17  
NOBLE, 32, 33  
NORVELL, 32

NUGENT, 39  
NUNN, 11

**- O -**

OKEL, 2, 3, 5  
OLIVA, 21  
OLLIS, 27  
OMAN, 3, 10, 34, 35, 36, 37  
OWENS, 39

**- P -**

PAINBOIN, 32  
PALMER, 30  
PANCORST, 12  
PARKER, 35  
PARVIN, 40  
PATTERSON, 32, 33  
PEABODY, 23  
PEEL, 29  
PENMAN, 36  
PERDUE, 36  
PERKINS, 36  
PERRY, 12  
PETERSON, 40  
PHELPS, 19  
PHILPOTT, 39  
PIERCE, 31  
PINKERTON, 31  
PINNEY, 26  
PIONTEK, 35, 37  
POLK, 12  
POP, 10  
POPLITZ, 29  
PORTER, 23  
POSTHUMA, 29  
POWERS, 33  
PRATER, 32  
PURVIS, 29  
PUTMAN, 26

**- R -**

RANDALL, 36  
RANDOLPH, 35  
RATLIFF, 38  
REDBURG, 25  
REED, 26  
REHFELD, 28  
REID, 36  
REIGHARD, 29, 30  
REIS, 28  
RENFRO, 17  
REPMAN, 40  
REYMER, 30  
RHODES, 40  
RICHARDSON, 20  
RITCHIE, 30, 31



|                    |                            |                       |                         |
|--------------------|----------------------------|-----------------------|-------------------------|
| ROAT, 13           | SINCLAIR, 29               | TERRI, 20             | WEBB, 27, 32, 33        |
| ROBERT, 14         | SLATER, 24                 | TERRY, 14, 18, 19, 20 | WEBBER, 33              |
| ROBERTS, 12        | SMITH, 9, 24, 27, 31, 33,  | TETERS, 13            | WEIDNER, 19             |
| RODDEN, 39         | 39                         | THOMPSON, 19          | WEIS, 14                |
| RODGERS, 38        | SNELL, 40                  | THROCKMARTIN, 34      | WELLINGTON, 31          |
| ROGERS, 38, 39, 40 | SNYDER, 13                 | THROW, 10             | WELLS, 9                |
| ROLLINS, 20        | SOHNS, 23                  | TODD, 19              | WESTBY, 17              |
| ROSMAN, 35         | SPEAR, 38                  | TOLLE, 37             | WESTERGAARD, 9, 10      |
| ROSS, 13, 26       | SPINGER, 8                 | TOOLEY, 27            | WHITCOMB, 34            |
| ROTAN, 32          | SPRAGG, 12                 | TURNER, 40            | WHITE, 11               |
| ROY, 13            | SPRAY, 40                  |                       | WHITFORD, 30            |
| ROYCE, 33          | SPURGEON, 11, 27           | - U -                 | WHITMAN, 22             |
| RUGGLES, 35        | ST. JOHN, 29               | UDALL, 36             | WIEBE, 18               |
| RUNKLE, 34         | STANELY, 13                | UTTECH, 29            | WILLIAMS, 16            |
| RUTH, 28           | STEFFAN, 11                |                       | WILLIAMS, 8             |
| - S -              | STEWART, 21                | - V -                 | WILLIAMSON, 23          |
| SABIN, 39          | STIFFLER, 29               | VanCLEVE, 26          | WILSON, 17, 19, 21, 33, |
| SACA, 27           | STODDARD, 30               | VanNUS, 40            | 34                      |
| SAUER, 27          | STOUT, 16, 17, 18, 20, 34, | VanVLEET, 25, 27      | WIMBERLY, 14, 17        |
| SAULIUC, 10        | 37                         | VanWATERS, 26         | WINEBERG, 13            |
| SCHAE BEN, 24      | STRONG, 8                  | VASSAR, 34, 37        | WINKELMAN, 25           |
| SCHOTT, 28         | STROUP, 36                 | VETTER, 28            | WINTLER, 22             |
| SCHUHART, 28       | STRUBLE, 29                | VOGT, 29              | WISWALL, 13             |
| SCHUTTE, 28, 40    | STRUVE, 24                 | VOIGT, 28             | WODTKE, 21, 38, 39      |
| SCHWEISGUTH, 32    | STUART, 8, 9, 10           |                       | WOMELSDORF, 38          |
| SCOTT, 11          | STURGESS, 32               | - W -                 | WORLEY, 33              |
| SCRIBNER, 26       | STURTEVANT, 34             | WADE, 29, 37          | WORTHINGTON, 34         |
| SHATTUCK, 11       | SWARTZ, 35                 | WAHL, 13              |                         |
| SHAW, 33           | SWICEGOOD, 32              | WAITE, 36             | - Y -                   |
| SHEA, 27           |                            | WALL, 24, 38          | YOUNG, 25, 27, 31, 32   |
| SHELBY, 12         | - T -                      | WANT, 25              |                         |
| SHERWOOD, 32       | TAIT, 13                   | WARNER, 30, 31        | - Z -                   |
| SHROLL, 30         | TAYLOR, 11                 | WARREN, 30, 31, 35    | ZIMMERMAN, 14           |
| SIMMONS, 32        | TERI, 20                   | WARSOP, 31            | ZINCK, 16               |
| Shannon, 3         | TERREY, 20                 | WASHBURN, 23          | ZOLSOW, 28              |



## Clark County Genealogical Society Publications ~ Fall 1994

**Clark County Pioneers ~ A Centennial Salute**, Biographical sketches of the pioneers that settled Clark County prior to statehood in 1879. Many photographs, completely indexed. Compiled by Rose Marie Harshman  
765 pages, hard bound, members \$40.50, non-members \$45.00, plus \$3.00 postage & handling.

**Clark County Pioneers ~ Through the Turn of the Century**, Biographical sketches of the pioneers that settled Clark County and their descendants. A wealth of information for Clark County researchers and a treasured heirloom for family members. Many photographs, and completely indexed. Compiled by Rose Marie Harshman.  
911 pages, hard bound, limited edition, members \$49.50, non-members \$55.00, plus \$3.00 postage & handling.

**Clark County, Washington Census of 1850 & 1860, Vol. 1.** Complete information on all members of household. Compiled by Mildred Porter.  
68 pages, members \$6.75, non-members \$7.50

**1870 Census of Clark, Chehalis, Cowlitz, Jefferson & Island Counties, Washington, Vol. 2.** Complete information on all members of household. Compiled by Mildred E. Porter  
150 pages, members \$13.50, non-members \$15.00

**Clark County Washington Census of 1880, Vol. 3.** Complete information on all members of household. Compiled by Ralph and Betty Korff.  
121 pages, members \$13.50, non-members \$15.00

**Clark County Washington 1900 Census, Vol. 4.** Complete information on all members of household. Compiled by Rex A. Harrison  
234 pages, members \$18.00, non-members \$20.00

**Clark County Washington Marriages, Vol. 1,** Earliest available marriages through 1896. Many Oregon residents married here.  
244 pages, members \$13.50, non-members \$15.00

**Clark County Washington Marriages, Vol. 2,** 1897 through 1904, gives complete information from marriage applications  
290 pages, members \$13.50, non-members \$15.00

**Clark County Washington Marriages, Vol. 3,** 1905 through 1909, gives complete information from marriage applications  
299 pages, members \$13.50, non-members \$15.00

**Clark County Washington Marriages, Vol. 4,** 1910 through 1913, gives complete information from marriage applications.  
400 pages, members \$15.75, non-members \$17.50

**Clark County Washington Marriages, Vol. 5,** 1914 through 1915, gives complete information from marriage applications.  
500 pages, members \$15.75, non-members \$17.50

**Clark County Washington Marriages, Vol. 6,** 1916, gives complete information from marriage applications.  
217 pages, members \$13.50, non-members \$15.00

**Clark County Washington Marriages, Vol. 7,** 1917, gives complete information from marriage applications.  
429 pages, members \$15.75, non-members \$17.50

**Clark County Washington Marriages, Vol. 8** 1918, gives complete information from marriage applications.  
485 pages, members \$15.75, non-members \$17.50

**Clark County Washington Marriages, Vol. 9** 1919, gives complete information from marriage applications.  
429 pages, members \$15.75, non-members \$17.50

**Clark County Washington Marriages, Vol. 10** 1920, gives complete information from marriage applications.  
421 pages, members \$15.75, non-members \$17.50

**Clark County Washington Cemeteries, Vol. 1,** Old City Cemetery of Vancouver, tombstone inscriptions, cemetery maps, sexton's records and some obituaries. Compiled by Mildred E. Porter.  
184 pages, members \$13.50, non-members \$15.00

**Clark County Washington Cemeteries, Vol. 2,** includes St. James Acres, Salmon Creek Methodist, St. John's Lutheran, Pioneer and Fisher cemeteries; tombstone inscriptions, cemetery maps, funeral home and sexton's records.  
217 pages, members \$13.50, non-members \$15.00

**Clark County Washington Cemeteries, Vol. 3,** includes Post Military, Dead Lake (Fallen Leaf), Bethel Lutheran, Washougal Catholic, Sara Union, St. Mary of Guadalupe, Ridgefield, Chelatchie Prairie, Bethel Methodist, Mt. Zion and Highland Lutheran cemeteries.  
274 pages, members \$13.50, non-members \$15.00

**Clark County Washington Cemeteries, Vol. 4,** includes Washougal, Gardner (Hayes), Sacred Heart, Elim Lutheran, Amboy, Buncombe Hollow, Lewisville, Venersborg, Livingston and Mt. View cemeteries.  
274 pages, members \$13.50, non-members \$15.00





## Clark County Genealogical Society Publications ~ Fall 1994

**Clark County Washington Cemeteries, Vol. 5,** includes Brush Prairie, Yacolt, Hawk (Fairchild), Page (Red Rock), Sunnyside, Finn Hill, Sifton, Fern Prairie, St. John's Catholic, Hurt Road, Crawford, Gravel Point, Manor Wilson Bridge, Northwood Park, and Memory Memorial Park cemeteries.

400 pages, members \$15.75, non-members \$17.50

**Clark County Washington Cemeteries, Vol. 6,** Camas Cemetery. Contains plot maps, cemetery history, sexton's records including plot owner, funeral home handling service and information on many unmarked graves.

365 pages, members \$15.75, non-members \$17.50

**Clark County Death Records, Courthouse, Book One, 1891 - 1903.** Names, date of death, sex, age, marital status, residence, place of birth, names and birth places of parents, cause of death and signer of death certificate. Compiled by Colleen Bennett.

29 pages, members \$2.70, non-members \$3.00

**Diary of Cyrus Shepard, March 4, 1834 - December 20, 1835.** Cyrus Shepard, a minister and teacher at Willamette Mission. He traveled to Oregon with the Jason Lee party. Compiled by Geraldine Gilman.

120 pages, members \$9.00, non-members \$10.00

**The Long Trail to Paradise, Linus Brooks 1850 Journey.** Linus Brooks was the founder of Brooks, Oregon; contains family photographs, genealogy and letters. Compiled by Geraldine Gilman

162 pages, members \$13.50, non-members \$15.00

**Index to the Annuals of the Fort Vancouver Historical Society, 1960 - 1985,** Clark County, Washington. Full name index, cross referenced.

110 pages, members \$6.75, non-members \$7.50

**Knapp Mortuary Funerals 1907 - 1925** - records of over 2,500 funerals, 376 pages, compiled by Geraldine Gilman, members \$18.00, non-members \$20.00

**Hamilton Funeral Records 1917-1929,** Compiled by Geraldine Gilman. 126 pages, members \$9.00, non-members \$10.00

**Camas Funeral Home Records 1912 - 1943,** Compiled by Mildred Greening Piontek. 300 pages, over 6,000 records, members \$18.00, non-members \$20.00

**Skamania County Washington, Births, (1893 - 1926), Deeds & Miscellaneous Records (1855 - 1894)** Compiled by Daphne Ramsey.

116 pages, members \$9.00, non-members \$10.00

**Skamania County Washington, Census Records, 1860, 1870, 1880, 1885, and 1887.** Compiled by Daphne Ramsey

100 pages, members \$13.50, non-members \$15.00

**Skamania County Washington, Marriages, 1854 - Jan. 1931 (incomplete),** including abstract of marriage registrations. 1893 - 1920. Compiled by Daphne Ramsey.

196 pages, members \$13.50, non-members \$15.00

**Skamania County Washington, Cemetery Records,** includes cemetery records, abandoned graves, burial records and stories that tombstones do not tell. Compiled by Daphne Ramsey.

165 pages, members \$13.50, non-members \$15.00

**St. Luke's Parish Records.** Diaries of Rev. John McCarty, 1853 - 1868, and Rev. Albert S. Nicholson, 1868 - 1886. Records of baptisms, confirmations, marriages and burials. Compiled by Lesla Scott.

65 pages, members \$6.75, non-members \$7.50

All books are compiled by Clark County Genealogical Society, have paper covers and vello-binding unless otherwise noted



### *Ordering Information*



Postage for first book is \$2.00 with .50 for each additional book. The postage for Clark County Pioneers is \$3.00. Washington State residents must include 7.6% sales tax. Members of Clark County Genealogical Society receive a 10% discount, as reflected above, on all C.C.G.S. Publications.

Send your order to the attention of : Rose Marie Harshman, Clark County Genealogical Society, P.O. Box 2728, Vancouver, WA 98668

Exchanges? We will gladly exchange our books with your society on a page for page or equal value basis. Contact Rose Marie Harshman, for details.

Clark County Genealogical Society Library is located at 1511 Main Street, Vancouver, WA. It is open from 1:00 p.m. to 5:00 p.m. Tuesday through Saturday.



**LIVING LIFE MEMBERS**

Marilyn J. Anderson - '92  
E. June Andrews - '89  
Mildred Beck - '93  
William Beck - '93  
Veda DeColon - '89  
Elizabeth Ann Femling - '93  
Herbert Femling - '93  
Bette Forgy '93  
Barbara Germann - '89  
Jane Germann - '89  
Rose Marie Harshman - '89  
Mary Katschke - '93  
Roy Katschke - '93  
Bertha Krause - '89  
Jo-Ann Lee '93  
Connie Lenzen - '92  
Gerald Lenzen - '92  
Dorothy Person - '89  
Marilyn Shroll - '89  
Philip Thompson - '93  
Sandra Thompson - '93  
Doris Wastradowski - '89  
Sharon Wodtke - '93

**CONTRIBUTING MEMBERS**

Judy Card

**LIVING HONORARY  
LIFE MEMBER:**

Evelyn Greenstreet

**FOUNDING PRESIDENT:**

Margaretta Zimmerman  
31Aug1911-19Feb1994

YOUR MEMBERSHIP  
COUNTS!

Clark Co. Genealogical Society  
P.O. Box 2728  
Vancouver, WA 98668

ADDRESS CORRECTION REQUESTED

Non-Profit Org.  
U.S. Postage Paid  
Vancouver, WA  
Permit No. 934

American-Canadian Genealogical Society  
PO Box 668  
Manchester, NH 03105-0668

70/1299