

TRAIL BREAKERS

CELEBRATING 20 YEARS! Vol. 20 - No. 2, 1993-94



PRICE
\$3.00

CLARK COUNTY
GENEALOGICAL SOCIETY
VANCOUVER, WASHINGTON

TRAIL BREAKERS is published quarterly: FALL (September), WINTER (December), SPRING (March), SUMMER (June) by the **Clark County Genealogical Society, P.O. Box 2728, Vancouver, WA 98668**. Issues are included in membership; \$3.00 per issue.

BOARD OF DIRECTORS:

Fred Smith 574-2909	President
Roy Katschke	Vice-President
Mildred Piontek	Secretary
Mary Katschke	Treasurer
Toni Kohn	Ass't Sec.-Treas.
Dorothy Person	Immediate Past Pres.

TRAIL BREAKERS STAFF:

Editor:	Jane Germann
Assistant Editor:	Barbara Germann
Ancestor Charts:	Roy Katschke
Bible Records, Queries:	Barbie Baker
Book Reports:	Joanne Bortniak
Funeral Home Records:	Gerry Gilman
Miscellaneous:	Jane Germann
Surname Editor:	Delillah Knight
Vancouver Newspapers:	Pat Bauer
Volunteer Spotlight:	Rose Marie Harshman

DUE DATES for material from the individual editors are: August 15, November 15, February 15, and May 15.

The Editor accepts donation of "Articles," "Fill-ins," "How To's," "Biographies," etc. Any material for this may be left in the Editor's File at the CCGS Library and will be greatly appreciated. Especially needed are articles of "Genealogical Experience." If you have one, call the Editor: This is OUR periodical. Please include address of source if a reprint is submitted. Make sure your surname cards on file at the CCGS library are current for timely publication in the "Surnames" column.

Neither the CCGS or Editors of the **TRAIL BREAKER** accepts responsibility for errors of fact or judgement in the material submitted to and printed in the **TRAIL BREAKERS**. If errors are brought to our attention, we will try to correct them.

The **Clark County Genealogical Society (CCGS)** is a service organization dedicated to the collection and publication of the heritage of Clark County. CCGS offers assistance to genealogical researchers and family historians.

MEMBERSHIP: Membership is open to anyone interested in the collection and preservation of family and regional history. It includes a subscription to the **TRAIL BREAKERS**, a nearly monthly copy of the **NEWSLETTER**, and free checkout privileges at the CCGS Library. Membership Chairperson: Margaretta Zimmerman.

DUES: \$12.00 per years for an individual, \$14.00 for two members of the same household, receiving only one subscription to the **TRAIL BREAKERS**. Life membership is \$200, joint life is \$250. Contributing membership is \$50.00 or more per year.

MEETINGS: CCGS 1993-94 general meetings: Sep 22b, Oct 27, Nov 17c, Dec (none), Jan 4-12 Salt Lake City Trip, Jan 26b, Feb 23c, Mar 23, Apr 28-May 1 WSGS "New Frontiers" Conference @ Inn at the Quay, May 25b, and Jun 15c (this an earlier date). There is (b) beginner instruction or (c) computer interest group prior to most meetings. Board meetings are open to all members and are usually held the third Tuesday. Board meeting dates this year: Sep 21, Oct 19, Nov 16, Dec 14, Jan 18, Feb 15, Mar 15, Apr 19, May 17, Jun 7. No meetings are held in July or August. The **NEWSLETTER** gives meeting time & place.

LIBRARY: The Clark County Genealogical Society Library is located in the Clark County Historical Museum at 1511 Main Street, Vancouver. It is open to members and the public Tuesday through Saturday afternoons from 1:00 until 4:45 p.m. A large selection of supplies and forms are available for purchase. Head Librarian is Jerri St. John.

CELEBRATING 20 YEARS OF THE *TRAIL BREAKERS* 1973-1993

TABLE OF CONTENTS

Bible Records: Knight-Hoberg Family Bible	2
Many Roads Led West in 1855 , contributed by Gerry Gilman.....	4
Amboy Memories , contributed by Pat Bauer.....	8
Early Clark County Site: Etna , reprinted with permission of Bob Beck.....	10
New Books at CCGS , reviewer Joanne Bortniak.....	11
In my little old sod shanty on the plain , contributed by Robert Ray	15
Knapp Mortuary Records (1926-1927) , extracted by Gerry Gilman	16
Vancouver Register (1868 Vancouver Newspaper) , extracted by Pat Bauer	22
Ancestor Charts formatted by Roy Katschke	
Grover Cleveland ALLRED	28
Sharon (BATES) SCHUTTE	28
Sharon Mae (BOOTH/WALL) WODTKE	28
Rose (CAPODICE) KAPRANOS	29
Jennifer (COOK) WARREN	31
Jennie Mae (ZORTMAN) WELLWOOD	31
Surname File , Delillah Knight editor	34
New Members , Chairman Margarretta Zimmerman	38
Queries , editor Barbie Baker	39
Washington State Genealogical Society Annual Conference April 28-May1, 1994	40
Index	41
Clark County Genealogical Society Publications	44



BIBLE RECORDS

KNIGHT / HOBERG FAMILY BIBLE

(To my daughter Georgia on her wedding day, December 24th 1891, Joseph Hoberg)

NELSON & PHILLIPS' SUPERFINE EDITION.

NEW DEVOTIONAL AND PRACTICAL

PICTORIAL

FAMILY BIBLE,

CONTAINING THE

OLD AND NEW TESTAMENT

APOCRYPHA, CONCORDANCE, AND PSALMS IN METRE.

Translated out of the Original Tongues, with all former Translations
diligently Compared and Revised.

TOGETHER WITH A CAREFULLY ABRIDGE EDITION OF

Dr. WM. SMITH'S COMPLETE DICTIONARY OF THE BIBLE, AND
A HISTORY OF ALL THE RELIGIOUS DENOMINATIONS OF THE WORLD, HISTORY OF THE
TRANSLATION OF THE BIBLE, AND ILLUSTRATED HISTORY OF ALL THE BOOKS OF THE
BIBLE, CHRONOLOGICAL AND OTHER USEFUL TABLES, TREATISES, MAPS, ETC.,
DESIGNED TO PROMOTE AND FACILITATE THE STUDY OF THE SACRED SCRIPTURES.

COMPILED WITH GREAT CARE FROM THE MOST AUTHENTIC SOURCES.

Embellished with over 1200 Fine Scripture Illustrations,

NEW YORK:

NELSON & PHILLIPS,

NO. 805 BROADWAY.

Do you have Bible Records?? We need Bible records to print in the *Trail Breakers*. If possible, make a good, clear photocopy, including the title page of the Bible, and print any names which are not clear. Include your name, address, phone and mail to Bible Records Editor: Barbie Baker, Clark County Genealogical Society, P.O. Box 2728, Vancouver, WA 98668. We will welcome your contributions.

THIS CERTIFIES THAT
THE RITE OF
HOLY MATRIMONY
WAS CELEBRATED BETWEEN

John I. Knight of McMinnville
and Georgia M. Hoberg of McMinnville
on December twenty fourth at McMinnville
by Joseph Hoberg, a Minister of the Gospel.

Witness: Irene T. Rummel Witness: Bergitta C. Nelson

BIRTHS

John Irvine Knight, born on Cherry Creek, Colorado May 10th 1863.

Georgia Minerva Hoberg, born at Salem, Oregon July 13th 1866.

Errol Lome Knight, son of John and Georgia Knight, born at Hillsboro, Oregon June 6th 1893, died on Wrangel Island, June 21, 1922 of pseursy

Joseph Irvine Knight son of John and Georgia Knight, born at #1522 - 2nd Ave, Seattle, Wash. March 16th 1903.

Errol Lome and Joseph Irvine Knight were Christined by Rev. T. P. Revelle, pastor in First M.P. Church at 3rd and Pine St. on May 1903, Seattle, Wash. Died at McMinnville, Oregon Oct. 3, 1930. Auto Accident.

MEMORANDA

Richard Knight born in Queens County Ireland Oct 6 1811. Elizabeth Decamp Freunan, born at Rome, Adam County, Ohio Dec. 11th 1823. They were married at Illinois May 1857.

E.D.F. Knight died at McMinville, Or. Jan. 1883 after 18 months paralysis.

R. Knight died at Seattle Wn Sept. 24, 1898 from broken leg.

Joseph Hobery was born in Prussia April 9th 1828. Mary Jane Sproul was born at Philadelphia P, July 4th 1830. They were married at Galena, Ill. Nov. 13th 1851. Came to Oregon via Panama, 1856. Settled in Salem. J.H. Minester in the M.C. church. Celebrated their Golden Wedding at McMinnville, Oregon, Nov. 13 1901-

MARRIAGES

John Irvine Knight and Georgia Minerva Hoberg, December 24th 1891 at McMinnville, Oregon.

MANY ROADS LED WEST IN 1855

contributed by CCGS member Gerry Gilman

VIA PANAMA

Extracted from the story of the Landrum families by Robert G. Williams

The Panama R.R. was finished in 1855 and people could go to New York by rail and then take a steamer via Panama for San Francisco. The distance was estimated to be 5700 miles from New York to California. The steamers sailed twice a month, while they were traveling they ran through epidemics of Cholera and smallpox often carried by the passengers who were infected before boarding the ship. The passage by Panama was dangerous because of the Malaria and other swamp fevers. After arriving at Panama, each was given a mule which took them through the jungles across the Isthmus where at the other end ships on the Pacific Ocean side were awaiting passengers to sail to San Francisco, California.

VIA OREGON & CALIFORNIA TRAILS

From the biography of William Meriman Landrum Jr.

In 1855 William Meriman Landrum, his father, James Harvey Landrum, and two brothers John M. and James went to California to the Gold Rush via the Panama Isthmus. John died in 1857 of Small Pox. In 1860 the father James and son William returned to Forsyth County, Georgia, to take the rest of the family to their farm and home on the Stanislaus River. James Landrum Sr., because he had small children, returned to California via the Panama Isthmus.

William M. Landrum and his three sisters left Georgia in the fall of 1860. Nancy Elizabeth later married James Ellison Groves and reared 5 children. Son William Franklin Groves (married Grace Ruth Beals and their son Lovell Miron Groves is a resident of Vancouver, Wa). Mary Ann Delilah (married Elnathan G. Williams of Stockton, CA and were the parents of 3 boys and 2 girls). His 3rd sister Sarah Jane left Georgia in the fall of 1860 when the Civil War was at hand and their native state was to be a victim of defeat.

They were not slave holders and were reconciled to the Union, but the old folks never relented in their resentment for General Sherman for his wholesale vandalism of their state. The party made their way to St. Louis in time to take quarters for the winter and to be prepared to start early in the spring. William Landrum was a wagon and plow maker. His wagons had wooden axles, but they were good wagons and were the kind mostly used by the pioneers. They made this short trip with teams, and on the way they crossed Lookout Mountain, the scene of a later battle of the Civil War.

On 28 April 1861, having completed all arrangements for a long trip by ox-team to California, they provided a good store of non-perishable groceries. The original bill for purchase included; tar, salt, soda, cream of tartar, hops, lamp oil, beans, soap, spirits of turpentine, looking glass, alcohol, flour, side bacon, hams, pork shoulders, dry beef, coffee, pickles, dried fruit, rice, syrup, sugar, soda biscuits, ginger and spice. They took what animals they could which were most likely to make such a trip i. e. cows, horses, mules, dogs, cats, chickens, goats, sheep and pigs.

The wagons and supplies were loaded on the Mississippi River steamboat for a river trip as far as Henderson (now New Madrid), Missouri. There they disembarked. Before them were six months of weary travel. The first 100 miles of travel brought them to Van Buren in Carter County. From there they traveled 80 miles due north to Warsaw, Benton County; thence 90 miles to Independence, Jackson County; (the jumping off place for many people traveling west.) 40 miles further was Ft. Leavenworth, where the Landrum Party arrived on 5 May 1861.

They were 17 days covering 370 miles, besides the 200 miles by boat. The actual traveling rate was 25 miles per day. The route from Leavenworth entered Nebraska in Jefferson County, and proceeded Northwest to a point 17 miles west of Kearney on the Platte in Buffalo County - 240 more miles before they arrived there on May 23rd. Then they crossed the North Platte River and started on the Old Mormon Trail up the Northern side of the Platte river to Fort Laramie, Wyoming arriving there 13 June 1861 a distance of another 275 miles in 21 days. The speed for the first half of the distance is remarkable for any team, but the average for the whole distance of 20 miles per day is still fast for oxen. On the way they passed Court House Rock, Chimney Rock in Cheyenne County, Nebraska and Scots Bluff in Scots Bluff County.

The guide book used at that time describes this part of the trail thus: Dividing into 20 divisions the distance from Independence to Kearney and Gehring: 1-2- about 20 miles each until they passed Indian Creek 5 miles NE of Olathe, Kansas; 3- Bull Creek (3 miles SW of Gardner, Kansas); 4- 5 Cross Wakerusa (4 miles south of Lawrence, Kansas); 6- 22 miles on prairie (4 miles south of Tecumseh, Kansas; 7- 14 miles on prairie (SW of Topeka, Kansas); 8- Crossed the Kaw (Kansas river near Roseville, Kansas); 9- Along the Kansas River; 10-11 Crossed the Red Vermillion River; 12- Crossed the Black Vermillion River; 13 Crossed the Big Blue River at Shroyer, Kansas, near Marysville; 14-15 High divide to Little Blue River; 16- Arrive at Little Blue River at Fairbury, Nebraska; 17-18-19- Up the valley of the Little Blue River to Hastings, Nebraska; 20- Cross the divide at Janette, Nebraska to the Platte River; 21- Up the Platte to Kearney, Nebraska; 22-23 Cross Plum Creek (Lexington, Nebraska); 24-25-26- Up Platte River to Northplatte (city); 27- Arrive at Northplatte; 28- Pass the Forks of the Platte Rivers; 29- Cross the South Platte (The Landrums crossed near Kearney, NE); 30- to ash Hollow (Lewellen, Nebraska); 31- 22 miles up the North Platte river; then follow : 1- 22 miles to Court House Rock, Cheyenne County at Northport; 2-

Chimney Rock; 3- Chimney Rock; 4- Up Platte; 5- Marshall Pass (Ghering and Scotts Bluff); 6- Up Platte (Torrington, Wyoming); 7- 17 miles to Fort Laramie.

Fort Kearney of 1861 was 4 miles east of the present Kearney. It was one of the most important stations on the trail, and was the scene of many desperate encounters.

In the 1860s, the western Indians were becoming increasingly troublesome. It was really an economic cause on the part of the Indians. Their first contacts with white men were generally with the fur traders. The Indians profited by being able to procure firearms, knives and ammunition and many other articles they needed. Fortunes were made by the large trading and trapping companies, but it only required a few years to exterminate the beaver colonies and other fur bearing animals. After that, the situation of the mountain Indians grew rapidly worse.

About this time the extermination of the buffalo of the plains began. The destruction of the food sources of the Indians kindled resentment for the intrusion of the pioneers.

Practically all of the State of Kansas was

a buffalo feeding ground and vast herds roamed these plains. (figures compiled by the railroad builders gave the number of buffaloes slain in Kansas alone in 13 years as 31,000,000. The first railroad trains were sometimes delayed 5 to 10 hours while the herds passed.) The wholesale destruction of wild animal life impoverished the Indians and they resisted the building of the overland railroad by attacking the builders. In the end, Indian wars were fought by Generals Crook, Custer and others, and the Indians were placed on Reservations. An old guide book had a notation cautioning travelers to beware of the Bannocks and Blackfeet Indians after crossing the headwaters of Salt River as they enter Idaho. One traveler not obeying the rules and insulting the Indians could wipe out a whole wagon train.

By 1861 the wagon trains had little trouble because there was so much traffic on the trails, travelers were by then well armed, and there were more Military posts. In 1860, 500 freight wagons frequently passed Fort Kearney in one day; and 888 west bound wagons drawn by 10- oxen were counted past the post in one twenty four hour period. It required all summer to make the trip to Ft. Hall and back.

During the building of the railroad (soon after the time the Landrums passed), Plum Creek was the scene of an Indian depredations. Here Chief Turkey Leg with his Cheyennes wrecked a train, killing the engineer and fireman, robbed the train and made off; but he was overhauled and many of his braves were killed.

When the Landrums entered into the Wyoming land and followed the North Platte River, the Rocky Mountains the elevation suddenly increased to 6700 feet and this further increased to 7100 feet at the Continental Divide. There is no record of the first use of this great natural highway. It was used by the wild animals and Indians ages before any white man arrived in the country. It gradually developed

into a trapper's highway and an emigrant road. Beginning at St. Louis this trail was 2000 miles long. The first wagons were used about 1840. The trail branched at the junction of the North and South Platte in Nebraska; the south branch passed through Wyoming on the present line of the railroad. The north branch followed the North Platte and at Casper the Landrums crossed to the north side. At this point, near the center of Wyoming, the Platte River runs due west, swings around the point of the Laramie range, and flows southwest 40 miles. Just past Casper is Emigrant Gap, a famous landmark of the emigrants, and to the left the "Red Buttes." As you proceed along the crooked path of the Platte River past Willow Springs to Devil's Gate and Independence Rock at the junction of the Sweetwater river coming in from the west, an abrupt turn west follows the Sweetwater past Split Rock, Three Crossing (Brownsville), "Burnt ranch" (Rickets), and continues for 95 miles to South Pass.

The Devil's Gate is two miles beyond Independence Rock, and 350 yards long. Burnt Ranch is at the junctions of the Sweetwater and Strawberry Creek and near the Platte. From Independence Missouri to South Pass is 950 miles. South Pass is a flat plateau on the great Continental Divide which separates the head waters of the Sweetwater River flowing to the east and Sandy creek flowing westward.

From south Pass in the south central part of Fremont County, Wyoming, the problem of the pioneers was to traverse the 180 miles distance to the Snake river in the vicinity of American Falls. A dessert 40 miles square lay between them and the Green river. After crossing the green they encountered mountain ranges running north and south across the way, and cut in a few places by creeks and rivers, the line between the two points would nearly coincide with Latitude 42:30. The regular trail from south Pass by Sublett's Cutoff, turned southwest, crossing Ham's Fork to Bear Valley, Soda Springs; thence northwest to Fort Hall.

The Landrum party took a course to the northwest, going 40 miles to the New Fork of the Green River; thence down the Green River past Bitterroot Creek to Piney Creek, up Piney Creek across Thompson's Creek plateau and head waters of LaBarge Creek and Smith's Fork to the Salt River Valley. Ten miles further on they crossed Salt River and on for four more miles to the west Branch of the Salt River. This took them across the State line on Latitude 42:30; from the State line they travelled northward across the Preus Range and up a branch of the Blackfoot River, and thence another 30 miles to the Blackfoot Marsh; then on another 20 miles north to Soda Springs; 14 miles further in a northwest direction to the Blackfoot River where they traveled down stream six miles and left the river; 14 more miles brought them to Ross Fork on the county line of Bingham and Bannock Counties.

From the town of Ross Creek the party followed Ross Creek along the Snake River Valley for 15 miles to the junction of the Pont Newf River; thence 10 miles to the Bannock River; on to another 10 miles to American Falls, which is on the Snake River. At this point the road joined the main road from Ft. Hall which followed the Snake River another 25 miles in a southwest direction to the entrance of the Raft River at the present town of Yale, Idaho.

The Raft River was followed for 23 miles to the head waters near Malta, from here the party turned abruptly west up a tributary of the Raft River for another 17 miles over Goose Mountains, to Pyramid Circle or the "Temple of the Druids". This remarkable work of nature is well described by nearly every diarist who came that way as being a grand piece of wild scenery. Late maps show a large reservoir at that point. The Pyramid Circle is 5 miles long and the inlet

on the east is 25 yards wide with the outlet at the west being 50 yards wide. It contains about 25 square miles of water; it is surrounded by towering walls and resembles a burnt city, as it has often been called.

The 200 miles from South Pass to American Falls required 21 days. This trail lay over alternate gullies and hills, with elevations between 500 and 700 feet. A few miles westward of Pyramid Circle, took them to Goose River, flowing north. The party followed up this stream about 17 miles to the extreme northeast corner of Nevada. Here they found good water from springs and the area was a much used camping place. Proceeding from here the road could be described as a straight line southwest to the present Wells, Nevada. There were slight deviations and at a point near Wells a fork in the road provided a long and a short trail to Wells. From the camping place on the head waters of Goose River they crossed the watershed of the Nevada Basin and Snake River to the north a few miles into thousand Spring Valley, about 20 miles; then they climbed a ridge on to a high level plain. There may still be evidence of ruts from their wagon wheels. The road proceeded along the Humbolt River, over the mountains east of Elko, Fremont Canyon to Gravelly Ford; north of Battle Mountain, the Iron Spring Range and Tule Swamps at Winnemucca, Cold Springs and Eugene Mountains and on to the Lassen Meadows, to the sink of the Humbolt River, to the Slough and across the desert to the Carson River at Ragtown a total of 364 miles from Well, Nevada. This was a long and dry route and many a wagon broke down. The land now with the present irrigation looks green but before water was put to it it was a hot desert land with alkaline water holes as the only water and scarce fodder for the animals.

###

AMBOY MEMORIES

Pat Bauer lived with her grandparents, George and Alice McKee, after the death of her mother in 1934. The two articles were "item among stuff I've saved," and she shares these two articles, apparently from a column written by Clark Brown, with readers.

CLARK BROWN VISITS Vancouver Columbian, June 6, 1938

With George McKee and Hear How Three
Brothers Came West in 1883 and
Settled in the Wilds of Amboy Forests

"Just the right time for a visit," said George McKee as we met in Wood's furniture store recently. "Let's sit in Clyde's office. I pay Clyde many a visit just as I did his father whom I knew in the long ago. I Suppose all of us who have reached the shady side of life would rather talk of the past just as the younger generation would rather talk of the future.

"My brothers, Jim and Archie, and I hitched up a team to a prairie schooner 55 years ago in 1883 and with my mother and our sister started for the west. We said good-byes to our Missouri friends and joined another schooner driven by W.F. Gerber, a man loved by all who knew him when he lived.

"It was a long journey, but in memory I enjoy the trip now. Over mountain roads, plains and valleys we finally made our way to Vancouver, our rainbow's end.

"It was haying time along the Columbia when we arrived. Ed Blurock at Blurock's landing wanted help. We worked there putting up hay and then went to Amboy.

"There were a number of boys there whose initials were A.M. and I think Burt Blaker is correct when he says that is where Amboy got it's name. We homesteaded land, mother bought a railroad "80" and then came the building of homes.

"We worked together. There were the trees to fell and the land to clear and break up, but soon we had crops growing. One of my brothers went to the first school in

that section, a little log schoolhouse long since fallen in decay.

"Our nearest postoffice was LaCenter. I carried the mail from there for 21 months, but was not paid by the government. The neighbors were to pay me one dollar a trip, but money was scarce and my entire receipts for the 21 months were 10 dollars. That was raised at a dance the neighbors gave, the profits to go to me.

"I shall never forget one Christmas eve when I started from LaCenter, a distance of 16 miles, on foot. In Canyon Creek I fell off a long, but managed to keep the mail sack on the log and dry. What a rush there was for that Christmas mail when I got home.

"Yes, there were three of us brothers who came west. Jim passed away a little over a year ago, Archie died a week ago on Memorial day." [George McKee died Nov. 5, 1938, five months after this interview.]

CLARK BROWN VISITS Vancouver Columbian, November 20, 1940

Frank Blaker,
Long-timed County Employee, Who Recalls
Early Days at Amboy and Here;
Saw Three Courthouses Constructed

This is a story of Frank Blaker, son of one of Clark county's old pioneers. Mr. Blaker said. "I was born in Sioux City, Iowa November 13, 1876. Father and mother came to Portland in 1878, coming by train to San Francisco and to Portland by steamer, as there were no railroads in the northwest at that time. For a number of years we lived on Union avenue, right at the north end of the bridge that spans Sullivan's gulch. The old house was moved a few years ago to make room for a modern building, but it still stands there on Union avenue as I passed it a few days ago.

"At that time there were no bridges across the river, and the street car system was a one-horse car on the west side of Front street. I well remember going across on the ferry with father, and one day he pointed out a man to me, dressed in a Price Albert coat, silk hat and cane, and told me that man was Jack Dempsey, the Nonpareil. Father was always fond of hunting, and at that time he hunted ducks and geese on Swan Island.

"When I was still a small boy we moved to Amboy. At that time, the country was a virgin wilderness. Father together with his brother, cut their own road from a bout three miles down Cedar Creek into the land they had selected. Our place covered 120 acres, while my Uncle Charles selected 80 acres joining our place on the north. Our first house was 11 by 14 feet, built out of split cedar shakes and had a split-puncheon floor. Later, a shed was built on one end which served for a wood-shed and a potato bin, the construction materials being the same as the house. I well remember that one spring, mother and I went to Portland and stayed for several weeks, and when we came home, we found that the ferns had grown several inches high up through the cracks in the floor.

"Father and my Uncle Charles followed the brick mason trade, and every spring they would go to Portland and work until late fall. Then they would buy a year's provisions and ship it down to LaCenter by boat. Then the big event of the year, to me, was when they would take two ox teams and go after it. Transportation was slow. The trip took one day down and one day back, and I still remember the thrill it gave me if they would let me go. Flour and sugar were purchased those days in barrels, the sugar being called 'extra C or Golden C,' both begin what we call brown sugar today. Salt also came in barrels, tear in five or ten pound chests, nicely wrapped in tea lead, the same making very fine sinkers on my fishing line. Coffee came green in sacks, to be parched at home, and I still remember the delicious odor that came from that coffee as mother parched it in the oven.

"At rare intervals, some of the neighbors would be going to LaCenter, and the news would soon spread among the few families there, and when said neighbor did go, he would have a list from nearly every family. I have heard my mother say many times that she always had her list started with 'tobacco, dried apples and bean,' and then followed the other few items not really considered necessities of life.

"Wild game and fish contributed very materially to our bill of fare, and it was on that little ranch at Amboy that I caught my first fish, and developed shall we say, my hobby, my love for fishing, which I still enjoy to the utmost. There were no game or fish laws in those days, and I can truthfully say that I do not believe that there was ever a fish or a pound of meat wasted. Fishing or hunting those days was both for sport and food, and the supply was unlimited.

Had No Fires

"Another things that I well remember was the every boy was taught to be careful with fire. The very education that is given us today on fire prevention, was drilled into us by our parents then, and no one of us would think of such a thing as being careless with a camp fire. I never heard of a forest fire when I was a boy.

"And how well do I remember the home remedies of that time. I don't think that I ever saw a doctor until we moved to Vancouver in 1889. In the Spring, sulphur and molasses was the proper thing to clear our your system; Sassafras tea was also good to thin down your blood. If you needed a laxative, the old reliable Chittum Bark tea was just the thing, and what a tea! If you had a cold, gargle of coal oil, together with goose grease rubbed on your chest, or sometimes an onion poultice would do the work. If there was danger of measles, diphtheria or scarlet fever, a bag of Asafoetida was tied around your neck on a string, and no self-respective contagious disease would come near you. Large families were the rule rather than the exception and as there were no doctors nearer than Portland, the good old midwife had her day, and she was a busy woman.

"In those days, people were neighborly. If a new cabin or a barn was to be built, people came from miles and had a 'raising.' The women would prepare a big meal, and by nightfall the building was about finished. If death came, the men got together and built a coffin, many times out of split cedar, the women trimmed it in black, and the departed was solemnly laid away without benefit of undertaker or clergy.

Moved to Town

"I attended the first school in Amboy in a little log cabin of two rooms, the teacher living in one room and teaching school in the other. Later came the practice of the teacher "boarding around, one week at each home, and her salary being furnished by donations from the

parents sending the children. Payments were large or small depending on how many children you were sending. As I recall, my father and my uncle put up most of the salary. Three months was a term of school, during the months of April, May and June.

"In 1889 we moved to Vancouver and then lived in an up-to-date cottage on Eighteenth and Markle avenue. A cistern in the back yard with a pump at the kitchen sink, was the water supply. And best of all, we had a real bathtub made of tin. The old wooden tub for Saturday night was gone and a good thing too, for by then there were so many of us, that the weekly ablutions would take mother well into early Sunday morning. Finally she had to start in on Friday night, so as to have it all over by Sunday.

"I first attended school in the old Central school, then the only school in town. Many changes have taken place since that time. I remember the first pavement of wooden blocks that reached clear up to Fifth street; the first sidewalk up Main street to Twenty-sixth, on the east side of the street only; the old hand pump fire engine; and how proud we all were when we had our new steam fire engine; the firemen's tournaments held on lower Main street, with teams generally from The Dalles, Oregon City and Astoria."

And so ends the story of Clark county's oldest employee. He has served twenty-four and one-half years in various offices of the courthouse. And our new courthouse will be the third one he has seen built.

EARLY CLARK COUNTY SITE: ETNA

Reprinted with permission of Bob Beck

Grist Mill landmark along Cedar Creek

Color Etna green.

Use light green for the broadleaf maple trees that arch over the winding roadways, forming living tunnels.

Color it medium green for the murmuring water of Cedar Creek as it merges with the near-blue current of the North Fork of the Lewis River.

Save the dark green for the magnificent cedar trees that surround the old grist mill. They gave Cedar Creek its name.

Etna is an historic community on the south bank of the Lewis River, about seven miles upstream from Woodland. Created and named more than 100 years ago, Etna has a colorful history.

About all that is left of the original Etna is the grist mill, retained as an historic attraction.

It is generally agreed the mill was built in 1876 and that it was created of timbers hand-hewn with broad ax from the towering

cedars and firs that grace the valley of Cedar Creek.

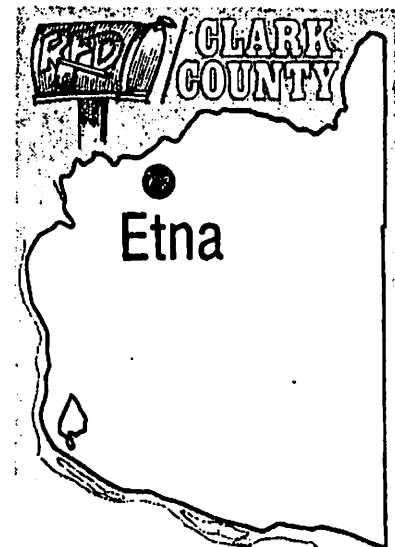
Exactly who built the grist mill is another matter.

The Vancouver Independent newspaper of July 22, 1876, carried an item that George W. Woodham was building a grist mill on Cedar Creek. "This mill will be ready to grind wheat this fall," the article stated.

In a 1953 special edition of The Columbian, an article on Cedar Creek credited the building of the grist mill to A.C. Reid who, the writer said, "arrived by ox team in the early 1870s and built a grist mill on Cedar Creek in 1876."

According to "Battle Ground, In and Around," a recently published history, the builder was Adam Reid, a different spelling but probably the same man.

A 1961 edition of The Columbian reported the grist mill had been built in 1876 "for Thomas Otwell, who owned the site." However, years later the newspa-



per reported "the Cedar Creek grist mill was built by A.C. Reid for George Woodham."

Whoever the builder, the grist mill remains a scenic attraction today, one of the more frequently painted scenes in the county.

The naming of Etna is credited to Reid (probably the correct spelling) who had come to Clark County from Etna Green, Ind., and named the new community after his old hometown. (Some newspaper accounts of the time



1889 logging operations on Pup Creek near Etna.

called it Aetna, the Greek spelling.)

Reid came up the Lewis River by riverboat and landed at the mouth of Cedar Creek. He entered the then-fledgling timber business, building a sawmill on the creek just downstream from the grist mill.

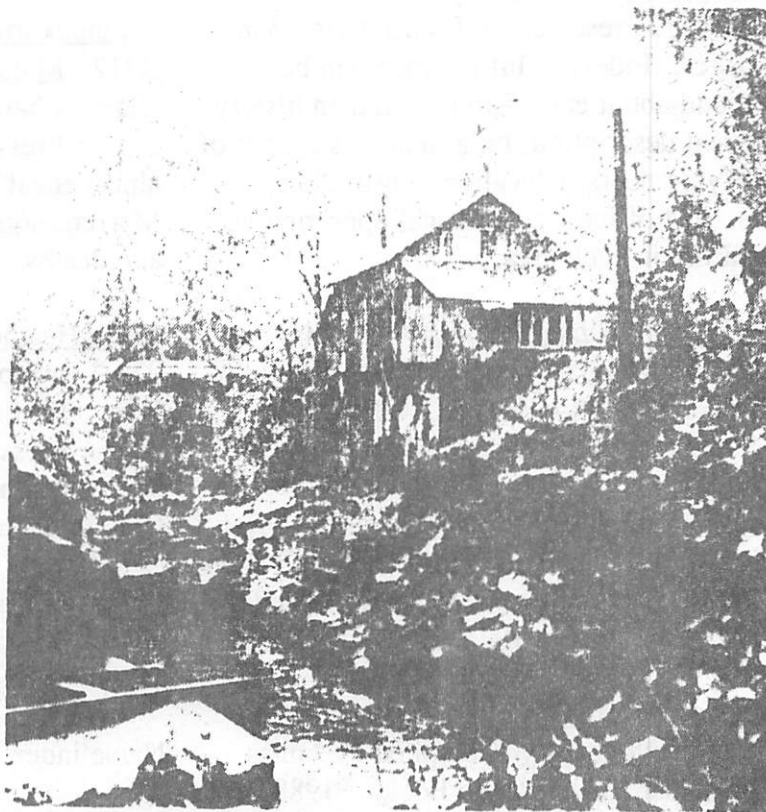
The first store at Etna was constructed by Jim Forbes, who homesteaded at the mouth of Cedar Creek and built a general merchandise firm catering to loggers. He apparently operated this store until 1894, when the Lewis River went on a rampage and washed the building away.

Old post office records show the first post office was established Feb. 3, 1882, and was discontinued in 1918 when the mail service was transferred to Woodland.

There is nothing left at the mouth of Cedar Creek today to suggest that at one time a community complete with stores and riverboat landing existed there. Now there is a public recreation area with a boat ramp, giving fishermen access to deep holes in the Lewis River where spring chinook lie.

The grist mill has ground no wheat or barley for about 30 years, but it remains a tourist attraction. The dam upstream that provided the water power was blasted away after World War II to open a passage for migrating salmon. It has been replaced by a long fishway bypassing a falls.

Etna



Cedar Creek Grist Mill

NEW BOOKS AT CCGS

by Joanne Bortniak

These books have been added to the collection at our CCGS library in the historical society building at 1511 Main Street, Vancouver. Librarian Jerri St. John and reviewer Joanne Bortniak have made notations so you can be aware of the new books which can be of use to you in your research. New books are placed on a shelf for a month and then added to the general collection. Since this is a quarterly, these titles will be found both places. Check the new book shelf when you visit the library.

1850 Census Sainte Genevieve County, Missouri

310 Population schedule, Mortality schedule,
MO Slave schedule. Transcribed by Bernadine
LaRosa Bishop and Dorothy Amburgry
Griffith. Presented by Madeline Mesplay. The
original handwriting was not always legible but
other records were consulted to try to perfect this
compilation. 61 pages

Along the Mt. Adams Trail by Penny and Bill
979.7 Collier. Presented by Fran Harris. 308
Col pages. Indexed. Information can be
found about early Klickitat Indian history,
geographical description, biographical sketches of
many early pioneers, educational institutions,
churches, post offices, economical opportunities
and social life in each area.

The Benjamin F. Nickel Family by Phyllis
929.2 Ferrara Hoggatt ©1971. Presented by
Nic Ken and Phyllis Hoggatt. 70 pages.
Some associated names. Pictures.

Bent's bibliography of the White Mountains, NH
016 by ALLEN H. BENT. Presented by Picton
Ben Press. First published in 1911. Edited by
E.J. Hanrahan in 1971. Indexed, 114 pgs.

The blacks of Pickaway County, Ohio in the
977.1 nineteenth century Compiled by James
Buc Buchanan. A Heritage Book. ©1988.

This book presents the public genealogical
records of the black settlers of 19th century
Pickaway County. The census rolls are
supplemented with the birth and death records

and some marriage records. Indexed by surname.
142 pages.

A bunyip close me Recollections of the nineties
994 by Eugenie McNeil. Retold by her
McN daughter Eugenie Crawford. Presented
by Rose Marie Harshman. 135 pages.
Gives an interesting picture of what the nineties
were like.

An index to the vital records of Dorchester,
R312 Massachusetts through 1825 by Sanford
Gla Charles Gladden. Presented by Picton
Press. 148 pages. Surnames are in
alphabetical order. Marriages/brides as well as
Marriages/grooms. Also includes births, baptisms
and deaths.

Caleb Heathcote Gentleman Colonist; Lord of the
929.3 manor of Scarsdale...1692 - 1721 by
Fox Dixon Ryan Fox. Presented by Picton
Press. 301 pages. Indexed. Heathcote is
best remembered as the pioneer who brought the
Church of England to America.

Canadian passports 1681 - 1752 edited by E. Z.
971 Massicotte. Presented by Madeline
Mas Mesplay. 150 pages. Archives of
Quebec, Canada. Written in French.
Name index.

Delaware County, N.Y. copied, typed and
974.7 indexed by Mrs. Jean D. Worden.
Wor Records of First Presbyterian Church of
Stamford, Delaware County, N.Y. Also
St. Peter's Episcopal Church, Hobart,

Presbyterian Congregation of Harpersfield, and Reformed Church of Roxbury. Private Records of Rev. L.E. Richards of the first mentioned church.

Durst and Darst families of America by Sanford 929.2 Charles Gladden. Presented by Picton Gla Press. 1027 pages. Indexed. Family groups and proofs are underlined. Everything you want to know about the Durst/Darst family from the early 1700s. ©1969.

Edward Tolton Family by Lula Tolton Tanner. 929.2 Presented by Erma Cowgill. Starts with Tol general history. Is cross-indexed with family names in bold print, given names listed beneath. some pictures. 162 pages.

Garland County, Arkansas Tombstone 312.3 Inscriptions Eastern Vol 1 Compiled by Cli Inez E. Cline and Bobbie Jones McLane. Presented by Dorothy Kallas. This volume covers eastern half of the county. and includes small cemeteries found in back fields. There were graves without markers and some cemeteries that couldn't be found. It contains over 4,500 names, with birth and death dates. 202 pages.

Getzendanner familie giezendanner by David 929.2 Getzendanner. Presented by Carol Get Huesser. A history of the Swiss Family and continuing in America from 1729. Index in the center of the book. Some related families. 264 pages.

The Gopher 1943 vol 56 University of Minnesota 977.6 presented by Marilyn Dalquist. 343 MN pages. index

Grand Lodge of Ancient Free and Accepted 366 Masons of Oregon. 86th Annual OR Communication at Portland. Presented by Carol Huesser. 188 pages. Does not have a name index.

Historical sketches of Amherst, New Hampshire 974.2 by John Farmer. Presented by Picton Far Press. 52 pages. First printed in 1837. John Farmer ranks as New Hampshire's greatest nineteenth century historian.

Index to the history of Buffalo & Pepin Counties. 977.5 Wisconsin by Franklyn Curtiss-Wedge, WI H.C.Cooper Jr. & Company. Indexed by Mrs. Sturges Bailey. Presented in memory of Timothy Alan Oman. Instructions for obtaining copies of the material is found at the front of the book.

Mahan and allied families by Denise Kay Mahan 929.2 Moore. Presented by James Hurley. Moo Descendants of Cornelius & Mary Mahan. Including Maternal Lineages of Shaver and Brelsford. The 95 page book includes some history, some reproductions of proofs, family descendents and a surname index.

Matta & Stierna by Rita Rydie Jendro. The 929.2 records are written in paragraphs instead Jen of lists. There are personal histories on the family members and a list of addresses.

Meigs County, Tennessee Census and Marriage 312.5 Records 1850-1900 Compiled by Bettye TN J. Broyles. 1983. Presented by Dorothy Kallas. 410 pages. A surname index at the front.

Missouri genealogical records & abstracts vol 1: 929.11 1766 - 1839 by Sherida K. Eddlemon. Edd Presented by Madeline Mesplay. A Heritage Book. Tax lists, marriage records. licenses and many other records are indexed. 336 pages.

Missouri genealogical records & abstracts vol 2: 929 11 1752 - 1839 by Sherida K. Eddlemon. Edd Presented by Madeline Mesplay. There wasn't a Federal Census until 1930. These records are meant to help locate ancestors

for whom there are no census records. 262 pages. Indexed.

Missouri genealogical records & abstracts vol 3:
929.11 1787 - 1839 by Sherida K. Eddlemon.
Edd Presented by Madeline Mesplay.
Information by counties with a surname index.
253 pages.

Missouri genealogical records & abstracts vol 4:
929.11 1741-1839 by Sherida K. Eddlemon.
Edd Presented by Madeline Mesplay. A
Heritage Book, 272 pages. Indexed.
Primarily concerns the Henry Eddleman family
who came from North Carolina and descendants
of Peter Eddleman of NC.

Off to Mt. Hood, an auto biography of the old
979.5 road by Ivan M. Wooley, M.D.
Woo Presented by Carol Huesser.
reminiscences of the old road by people
who drove it and who lived near it. ©1959 109
pages.

Remarks of my life Prme Hezekiah Prince 1786-
929.2 1792 by the Thomaston Historical Society
Tho of Thomaston, Maine. Presented by
Picton Press. 114 pages. Indexed.
Prince and Coombs families. Read the editor's
preface for help in knowing what has been edited
and/or changed.

The Rosenberry Family by William Hugh
929.2 Rosenberry. From Clinton C.
Ros Rosenberry, 1875 forward through 1987.
Part 1 shows names only by generations.
Part two contains family groups with dates.

Slote memorial by Lois Slote Lehl ©1993.
929.2 Presented by Fran Harris. Names in the
Leh text are underlined. Indexed. 60 pages.
Many pictures and copies of certificates
are included.

The Sunday Times travel & holiday guide
929.1 presented by Carol Huesser. 612 pages.
Tim Maps. General information.

Switzerland a brief survey of the country and its
949.4 people written by several authors and
Swi Presented by Carol Huesser. It was
published in 1939 and deals with the
history of Switzerland, its economy and
geography. 102 pages plus pictures.

Tombstone Records of Eighteen Cemeteries in
312.3 Pound Ridge Westchester County, New
Jor York. Compiled by Mable L. Jordan and
Natalie M. Seth. Presented by Picton
Press. Burials in and around Pound Ridge, N.Y.
1860 - 1871. An index guides you to the page
where entries are found. Cemeteries are
identified with their location noted.

A topographical dictionary of Scotland vol 1 & 2
917 by Samuel Lewis. Several counties,
Lew islands, cities, burgh and market towns,
parishes and Principal villages with
historical and statistical descriptions. Vol 1 is
from Abbey to Jura, 611 pages. Vol 2 is from
Keanlochbervie to zetland, 622 pages.

Tracing your Hispanic heritage by George R.
929.1 Ryskamp. ©1948. 954 pages.
Spanish

V H S Addresses 1993 1993 address list of
929.15 Vancouver [WA]High School Class of
WA 1948. Compiled and presented by Pat
Bauer. Alphabetized by original
surname, with married name, if applicable.
Deceased and missing noted. Names from
several reunions are also included.

Walter Goodwin Davis: a Scholar's unique
920 contribution to NewEngland Genealogy
Smi by Danny D. Smith. Presented by Picton
Press. 89 pages. An index of emigrants
from England, an ancestor table, history and
biography about Walter Davis are all found in
this small book.

Verticle File

929.15 1883 directory for Boulder, Colorado by
Gla Sanford Gladden. Alphabetical order. 38
pages.

979.5 Following the Oregon Trail Printed by
KS the Kansas City Star, a newspaper printed
in 1993 of what happened in 1843.

929.2 Frey, Charles Family history by Sanford
Fre Gladden

929.2 Green, Hugh Family history of
Gre McCaffertys-Sarah Roddick-Seth Roddick
and Hugh Green

992.2 HOOPER, HAROLD GLENN Family
Hoo history

929.1 Inventory of census & Dubuque City
Bo directories (Iowa) compiled by J. Blays
Bowman

929.2 McClellan Family Family group sheet
McC

929.2 Pattee, Richard Family history
Pat Additional pages to the Vol. 17, No: I
1990-91 edition of the *Trail Breakers*
Ancestor Chart of Richard Pattee family.

974.2 The Portsmouth Project New Hampshire
NH 86 pages. not indexed. ©1974, from the
1700s.

929.2 Powell-Walker Family history
Pow

929.2 Vada May Cuffel Slabic Family history
Cuf

929.2 Wilder, Isaac Junior ,Ancestors of
Wil

In my little old sod shanty on the claim

I am looking rather seedy now,
while holding down my claim
And my victuals are not always
served the best,

And the mice play slyly round me
as I nestle down to rest

In my little old sod shanty
on the claim.

The hinges are of leather
and the windows have no glass,

While the roof, it lets

the howling blizzard in

And I hear the hungry coyote
as he slinks up through the grass

Round the little old sod shanty
on my claim.

Yet I rather like the novelty
of living in this way

Through my bill of fare
is always rather tame,

But I'm happy as a clam
on my land from Uncle Sam

In my little old sod shanty
on the claim.

-Author Unknown

Editor's note: Businessman Robert Ray
"just happened" to be sharing this poem
when I was in his office one day. It
apparently had one time been sung by
pioneers remembering the sod shanty on
the plain.

KNAPP MORTUARY RECORDS

The Knapp Mortuary Records were first printed in the *Trail Breakers* Winter 1989/Vol. 16 #2 issue. The history of the funeral homes has been printed in the first volume of the Knapp Funeral Home Records, the Hamilton Funeral Home Records, and the Hamilton Family history printed in the last issue of the *Trail Breakers*. The Knapp Funeral Home was established in 1905 by William H. Hamilton, Jr., but was sold to William Jennings Knapp and became the Knapp Funeral Home. He maintained the funeral home until an accident in 1930 left him unable to work full time. He died in 1934 and his wife, Sadie Spargur Knapp, and son, Joseph Knapp, continued operation until 1939. Apparently Joseph continued the funeral home until 1960 when Mylan-Gunderson-Lanier purchased the facility. CCGS member Gerry Gilman has worked with the Hamilton-Myland-Knapp-Gunderson Funeral Home personnel to copy the records which have been valuable to researchers. The home is located on the Corner of 11th and Columbia Streets. The first volume of the Knapp Mortuary Funerals 1907 - 1925 and Hamilton Funeral Records 1927-1929 are available from the Clark County Genealogical Society.

KADOW, MABEL

b. 5/12/1893 Oregon, d. 4/29/1926, age 32y 11m 17d, married to Frank Kadow, housewife, lived at Rt. #6 Vancouver, WA., died at home of intestinal flu attended by Dr. A.A. Pompe of Vancouver, funeral 5/1/1926 11 AM at Knapp Chapel with Rev. Charles A. Baskerville, buried at Mt. Scott Cemetery Portland, OR., Ordered by husband, Frank Kadow. Charged to husband and father. Parents were James Reeder born in Indiana and Mary Peck born in Illinois.

HUGHES, JOHN H.

b. 6/27/1848 England, d. 4/29/1926, age 77y 10m 2d, widower, retired miner, Episcopal, lived at 2405 Kauffman Ave. Vancouver, WA., died at home of a stroke which caused heart failure attended by Dr. Jo Bennett Blair of Vancouver, funeral 5/2/1926 2 PM at Knapp Chapel with Rev. Coleman Byram, cremated at Portland Crematorium. Ordered by O.H. Barnes. Charged to O.H. Barnes and Surety Finance Co for O.H. Barnes. Parents were (.... Hughes) and Rebecca Maddock both born in England.

GRIFFITHS, MORRIS R.

b. 3/22/1859 Wisconsin, d. 5/1/1926, age 67y 1m 9d, single, shoe maker, lived at 331 East 36th South Portland, OR., died at home of heart disease attended by Dr. Phillippe Tamissie Medical of the Arts Bldg. Portland, OR., funeral 5/2/1926 2 PM at the Ridgefield I.O.O.F. Cemetery with the Oddfellows, buried at Ridgefield I.O.O.F. Cemetery (no marker-no record). Ordered by cousin, W.A. Jones, Charged to Ridgefield #152 I.O.O.F. Parents were Griffith Griffiths (1831-1913) and Ellen Jones (1837-1912) both born in Wales. Note: Morris Griffiths is probably in plot with his parents.

SUTTON, DONALD MARSH

b. 1/31/1904 Oregon, d. 5/2/1926, age 22y 4m 1d, single, invalid, lived at Battle Ground, WA., died at home of inanition of the heart attended by Dr. A.C. Steckle of

Battle Ground, funeral 5/4/1926 10:30 AM at Knapp Chapel with Rev. W.E. Rossman, buried at Vancouver City Cemetery SE 112 Line 1 (has marker). Charged to father, Charles E. Sutton. Parents were Charles Edward Sutton (1860-1928) born in Ohio and Jessie Marsh (1867-1921 a twin to Jennie Marsh who died at birth) born in Vancouver, Clark County Washington the daughter of Samuel Putnam Marsh and Mary Elizabeth Strong. All were Washington State Pioneers.

KITTLE, GARDNER LAYFAYETTE

2/2/1855 Illinois, d. 5/3/1926, age 71y 3m 1d, married to Bertha Kittle (1864-1946), farmer, lived at Lewisville, WA, died at home of heart trouble, attended by Dr. A.C. Steckle of Battle Ground, funeral 5/7/1926 10 AM at the Lewisville I.O.O.F. Hall with Rev. J.L. Garrett, buried at Lewisville Cemetery (has marker). Ordered by and charged to wife, Bertha Kittell. Parents were Warren Kittell born in New York and Christian K. Wedner born in Pennsylvania.

KINNEY, BETTY LORRAINE

b. 4/27/1926 Vancouver, Clark County Washington, d. 5/5/1926, age 8d, Child-girl, lived at 321 West 31st St., Vancouver WA., died at home no cause of death listed attended by Dr. Robert D. Wiswall of Vancouver, funeral 5/6/1926 10 AM at Knapp Chapel with Rev. Herbert L. Jones, buried at Vancouver City Cemetery (no marker-no record, probably in the Kinney Plot SW 25 Line 9). Ordered by and charged to father Leslie A. Kinney. Parents were Leslie A. Kinney born in Iowa and Marie Kuntz Illinois.

MCCRAY, WILLIA LAVERNE

b. 11/1/1856 Pennsylvania, d. 5/5/1926, age 69y 6m 4d, married to Mina McCray, farmer, lived at 1409 East Reserve St, Vancouver, WA., died at home of pneumonia attended by Dr. William E. Cass of Vancouver, funeral 5/7/1926 2 PM at Knapp Chapel no clergy listed, buried at

Park Hill Cemetery A 384-3 (no marker). Charged wife, and C. McCray, H.L. McCray and Clark County Welfare. Parents not listed.

UNKNOWN

b. ? d. ?, found 5/5/1926 a "floater" discovered in the Columbia River near Reeds Island 3 miles East of Washougal, WA. by Pete Benson of Mt. Pleasant, WA. Had been in the water many months. Buried 5/5/1926 at the Vancouver County Farm Cemetery. Charged to the Clark County Commissioner's Welfare \$35.00 + \$4.00 milage. Parents not listed. Letter with entry:

Washougal, WA.
Nov 9, 1926

Mr. Knapp

On 5/5/26 Mr. Benson phoned you from Washougal about a body he found in the river, you had him bring it to Washougal / from Mt. Pleasant. The Phone Operator gave us a receipt for/ the Phone call and said to send our bill in to the County/ for transportation charges, but have been waiting for you to/ send us a blank to fill out and tell us where to send it as/ the Coroner in Cowlitz Co. did so I thot Clark Co. did the / same.

Will you please let me know how to go about to get this/ straightened up as we arn't able to do those things and not / get our expenses out of it.

Yours truly

Mrs. P. Benson

P.S. Am inclosing a stamped envelope for answer.

Note: Knapp Funeral Home answered letter and sent a blank 11/11/1926.

LOOMIS, ISAAC

b. 7/21/1866, d. 5/11/1926, age 59y 7m 20d, married, farmer, lived at Rt. 1 Box 58 Camas, WA., died at the J.B. Atkinson Real estate office of suicide with a 38 caliber gun which he self inflicted a wound to the left of the heart attended by Coroner W.J. Knapp of Vancouver, body shipped 5/12/1926 to C.C. Pinnick at Hoquiam, Grays Harbor County Washington, buried at Humtulpils Cemetery in Mason County Washington. Charged to W.T. Loomes of Humtulpils, Parents were not listed. Note: Gun was delivered to Atkinson Co. by Johnson. Wallet and other effects to Orville Knight 5/11/1926 including \$8.00. Clothing to stepdaughter, Mrs. Monson.

LEWIS, ALBERT

b. 8/15/1856, Washington, d. 5/11/1926, age 69y 8m 26d, single, logger, lived at Elma, Grays Harbor Washington, died at Oakhurst Sanitarium of pulmonary TB attended by Dr. M.A. Smith of Elma, funeral 5/15/1926 2 PM with Rev. Charles E. Baskerville, Cemetery not listed (not in Clark County WA. (probably either in Elma, WA. or Seattle, WA.) Charged to sister Mrs. Marion Edward McIrvin (Ella Mae Lewis McIrvin) and brother Charles C. Lewis Rt 1 Ridgefield, WA. Parents were Cyrus C. Lewis

and Mary Brown both born in Ohio.

SIVERTSON, NIELS

b. 12/29/1847 Norway, d. 5/12/1926, age 78y 4m 13d, widower, farmer, Luthern, lived at Minnehaha (Vancouver) WA., died at home no cause of death listed, attended by Dr. A.W. Stevenson of Vancouver, funeral 5/14/1926 2 PM at Knapp Chapel with Rev. Luther B. Deck, buried at Park Hill Cemetery A 424-1 (has marker). Ordered by and charged to daughter, Mrs. A.R. Douglas of RT #6 Vancouver. Parents not named but both born in Norway.

SOUMI, VERA

b. 6/27/1908 Arizona, d. 6/18/1926, age 17y 11m 21d, single, student, lived at Woodland, Cowlitz County WA., died at the Eye, Ear and Nose Hospital in Portland, OR. of chronic endocarditis attended by Dr. Ira E. Gaston of the Corbett Bldg. Portland, funeral 6/22/1926 2 PM at the Lewis River Finnish Hall, no clergy listed, buried at the Frank Abel Cemetery in Kalama, WA. Ordered by mother and charged to father. Parents were Fred Soumi and Augusta Malo both born in Finland.

RAMBO, NYE M.

b. 9/3/1855 Illinois, d. 6/19/1926, age 70y 8m 16d, married to Susan Rambo, retired merchant, Methodist, lived at 604 West 18th St., Vancouvrr, WA., died at St. Joseph Hospital of syphilis attended by Dr. A.M. Armstrong of Vancouver, funeral 6/23/1926 10 AM at Knapp Chapel with Rev. Francis La Violette, buried at Brush Prairie Cemetery (has marker). Ordered and charged to wife, Susan Rambo. Parents were James Rambo (d. 1896) born in Iowa and Harriet () Rambo d. 1916.

WOOD, MARY H.

b. 7/12/1853, d. 6/21/1926, age 72y 11m 9d, married to Charles D. Wood, housewife, Presbyterian, lived at 500 East 38th St., Portland, OR., died at Emanuel Hospital in Portland cause of death not listed, attended by Dr. E.P. Steinmetz of the Corbett Bldg. Portland, funeral 6/24/1926 2 PM at Knapp Chapel with Rev. Charles Baskerville, buried at Park Hill Cemetery (Packard Lot no marker). Charged to husband Charles D. Wood. Parents were A.J. Bird and Hannah Miller both born in Maine.

HANSEN, ELISABETH DAMGARD

b. 3/24/1890 Denmark, d. 6/20/1926, age 36y 2m 26d, widow, housewife, Luthern, lived at Skamania, Skamania County Washington, died at home of TB of the stomach attended by Dr. MacMakin of Camas, funeral 6/23/1926 2 PM at Knapp Chapel with Rev. Luther B. Deck, buried at Park Hill Cemetery A426-5 (has marker). Ordered and charged to brother, George S. Nielsen. Parents were R. Ravn Nielsen and Fanny Gregerson both born in Denmark.

BAKER, CHARLES EDWARD

b. 12/7/1871 Nebraska, d. 6/23/1926, age 54y 6m 16d, married, laborer, Episcopalian, lived in Portland Oregon, died at the Oregon State Hospital in Salem Oregon attended by Dr. L.G. Griffith of Salem, body picked up in Salem by Knapp Funeral Home, funeral 6/25/1926 2 PM Knapp Chapel with Rev. Coleman Byram, buried at Vancouver City Cemetery SE 32-5 Line 16 (has marker). Charged to sister, J.A. Alquist at 372 E. 38th ST. (37th & Hawthorne Sts.) Portland, OR. Parents were W. H. Baker (1830-1910) born in Pennsylvania and Rachel Ames born in Ohio.

YOUNG, MATT

b. 4/17/1854 Canada, d. 6/25/1926, age 72y 2m 8d, widower, logger, Catholic, lived at 814 Ingall St., Vancouver, WA., died at St. Joseph Hospital of brights disease attended by Dr. A.W. Armstrong of Vancouver, funeral 6/26/1926 9 AM at St. James Catholic Church with Father Hesley, buried at St. James Acres Cemetery 19/5 (has marker). Ordered by George Bernash. Charged to Clark County Welfare. Parents were John Young and Julia Morgan both born in Canada.

FLUID, ELLEN KATHERINE

b. 11/11/1918 Idaho (WWI Armistice Day), d. 7/4/1926, age 7y 7m 23d, lived at Feliida, WA., died at RT #3 Box 129 Felida of acute sinitis attended by Dr. L.E. Hockette of Vancouver, funeral 7/6/1926 1 PM at Knapp Chape with Rev. J.W. Sprecker, buried at Wilson Bridge Cemetery (no marker-no record). Ordered by and charged to father, C.H. Fluid. Parents were Cecil Fluid (1891-1945) born in Michigan and Myrtle Morris born in Idaho.

BELL, FRANK

b. 3/10/1872 New Jersey, d. 7/4/1926, age 54y 3m 24d, single, elevator operator, lived at Spokane WA., died at the Spokane Hospital with a Doctor from Spokane, funeral 7/9/1926 11 AM at Knapp Chapel with Rev. Herbert Jones, buried at a Portland Oregon Cemetery. Ordered by and charged to his cousin, Mrs. Dudley Eshelman of RT #3 Vancouver, WA. Parents were Frank Bell and Susie Snover both born in New Jersey.

JOHNSON, IVA MARY

b. 12/29/1861 Pennsylvania, d. 7/4/1926, age 64y 6m 5d, widow, housewife, lived at Rt. #1 Box 421 Vancouver, WA., died at home of diabetic gangrene attended by Dr. Robert D. Wiswall of Vancouver, funeral 7/6/1926 3:30 PM at Kanpp Chapel with Rev. Charles Baskerville, buried at Park Hill Cemetery A 427-1 (has marker). Ordered by daughter, and Mrs. George Sutherland at home. The Attorney was L. M. Burnett. Parents were Almond Stotenbur and Deborah Barnhart both born in Pennsylvania.

SUGG, ROY SPENCER Jr.

b. 4/4/1915 Vancouver, Clark County Washington, died 7/9/1926, age 11y 3m 5d, single, student, Christian Science, lived at 814 East 30th St., Vancouver, WA., died at home of general paritonitis due to a perferrated appendix attended by Dr. Joe B. Blair as assistant Health Officer of Vancouver, funeral 7/11/1926 2 PM at Knapp Chapel with Mrs. Fair as reader, buried at Park Hill Cemetery A 486-4 (has marker). Ordered by and charged to father, Roy C. Sugg. Parents were Roy C. Sugg born in Iowa (1883-1957 has marker) and Martha L. Springer born in Portland, Oregon (1884-1955 has marker).

PERDUE, CHARLES WESLEY

b. 1/27/1845 Savannah, Andrew County Missouri, d. 7/10/1926, age 81y 5m 13d, widower was first married to Elizabeth Ellen McMahan in Mahaska County Iowa. The fate of his first wife in unknown; he married Ella Bly Davis (1853-1918), the daughter of Thomas Davis and Frances Elizabeth Weldon on 8/23/1869 at Vancouver; they were divorced and she later married Winfield Galehouse of Lake Shore (Vancouver), wagonmaker, invalid, Civil War Vet, lived at 1116 West 8th St., Vancouver, WA., died at Steilacoom State Hospital in Steilacoom, WA. of arteriosclerosis myocarditis attended by Dr. C.E. Taylor of Steilacoom, funeral 7/15/1926 2 PM at the Cemetery site with Chaplain Colman Byram, buried at Post Military Cemetery #794. Ordered by son, Byram Thomas Perdue (1870-1942) of Brush Prairie. Charged to estate with Joesph Hall attorney. Parents were Thomas Jefferson Perdue born in Virginia and Elizabeth Margaret "Peggy" Ann Ferguson born in Scotland. Note: Charles Wesley Perdue was 5'6" tall, had light hair, blue eyes and fair complexion when he enlisted in the U.S. Army at Ft. Vancouver as a Private in Company "B" Oregon Calvary until mustered out in 1866. Then he and Ella moved to Wyoming where he was a scout for Buffalo Bill Cody. They later returned to Vancouver, Washington. Their children were (1) Byram Thomas Perdue (1870-1942), (2) Eudora Angeline Perdue (b. 1872), (3) Emma Wyoma Perdue (b. ca 1875), (4) Charles Wesley Perdue Jr. (1877-) and (5) William L. Perdue (1879-1913).

ERION, HUBERT FRANCIS

b. 10/1/1906 Oregon, d. 7/26/1926, age 19y 9m 25d, lived at Venersburg, Clark County WA., died at the Samuel B. Edwards Farm at Rt. #5 of a gun shot to the head attended by Dr. Jo. B. Blair of Vancouver, funeral 7/27/1926 3:30 PM at Knapp Chapel with Rev. Herb Jones, buried at Park Hill Cemetery A 13-1 (no marker). Ordered and charged to father, John Erion. Parents were John Erion and Carrie Edwards both born in Oregon.

GREEN, SARAH MELISSA

b. 1/9/1861 Wisconsin, d. 7/28/1926, age 65y 6m 19d, married to Henry Chester Green (1858-1944), housewife, lived at 2615 St. Jones Rd., died at home of pneumonia

attended by Dr. Ralph Lieser of Vancouver, funeral 7/31, 1926 10 AM with Rev. Herb Jones, buried at Mt. Zion I.O.O.F. Cemetery. Ordered by and charged to husband, Henry C. Green. Parents were Moses Brown born in New York and Sarah E. Hopkins born in Wisconsin.

HOGAN, MARTIN

b. 9/11/1865 Norway, d. 7/29/1926, age 60y 10m 18d, married, farmer, lived at Rt. #2 Box 44C Vancouver, WA., died at home of a cerebral hemorrhage attended by Dr. Robert D. Wiswall of Vancouver, funeral 7/431/1926 2:30 PM at Knapp Chapel with Rev. Coleman Byram, buried at Park Hill Cemetery A 387-1 (no marker). Ordered by and charged to stepson, W.A. Ball. Parents were Martin Hogan and mother not listed both born in Norway.

VAN BUSKIRK, SUZANNE MARY

b. 3/16/1926 Vancouver, Clark County Washington, d. 7/31/1926, age 4m 15d, single, Child, lived at 602 east 38th St., Vancouver, WA., died at home of pneumonia attended by Dr. W.H. Arnold of Vancouver, funeral 8/2/1926 10 AM at Knapp Chapel followed by service at grave site with Rev. C.M. Cline, buried at Camas Cemetery 22/14 in Camas, WA. (has marker) Ordered by and charged to father, R.E. Van Buskirk. Parents were R.E. Van Buskirk born in Camas, Clark County Washington and Hattie Vander Mate born in Ohio.

WHEELER, GEORGE C.

b. 11/9/1883 Nebraska, d. 8/3/1926, age 42y 8m 24d, married, fireman on the SP & S Railroad, lived at 514 West 26th St., Vancouver, WA., died near Lyle, Klickitat County Washington in an RR accident when his head and chest were crushed attended by Coroner Capman of Goldendale Washington, funeral 8/5/1926 2 PM at Knapp Chapel with F. & A. M----, cremated at the Portland Crematorium. Ordered by and charged to sisters, Mrs. William Laughlin and Mrs. George C. Wheeler per Fields (son). Parents were Myron Wheeler born in New York and Susan Fingel born in Germany.

WENSLEY ARTHUR HALL

b. 12/30/1844 England, d. 8/4/1926, age 81y 7m 4d, widower, retired brakeman for the Southern Pacific RR., lived at 2719 East 48th St. SE, Portland, OR., died at home of cancer of the throat and tongue attended by Dr. George Wilson of the Oregon Bldg, Portland, funeral 8/6/1926 1 PM at Holman & Lutz Chapel with Rev. Francis A. La Violette, cremated at the Portland Crematorium. Ordered by and charged to daughter Mrs. Lyle Dreyfuss of 2719 E. 48th SE., Portland, OR. Parents were John Wensley and Ann Hall both born in England.

DEAKO, CHARLES

b. 6/15/1863 Indiana, d. 8/4/1926, age 63y 1m 19d, married to Maggie Deako, farmer, Catholic, lived at RT #3

Vancouver, WA. died at home of lobar pneumonia attended by Dr. A.W. Stevenson of Vancouver, funeral 8/7/1926 9 AM at St. James Catholic Church with Rev. Father Walsh of Camas, buried at St. Mary's of Guadalupe Cemetery (no marker-no record but may be in the O'Leary plot with other Deako's). Ordered by and charged to wife, Maggie Deako. Parents were Charles Deako born in Alsauce Lorrain France and Fredericka Smith born in Germany.

BOSTWICK, EMMA AUGUSTA

b. 1/20/1850 Illinois, d. 8/9/1926, age 76y 6m 20d, widow, housewife, Presbyterian, lived at 409, West 9th St. with son Lynn Bostwick, died at home of angina pectoris attended by Dr. A.W. Stevenson of Vancouver, funeral 8/10/1926 8 PM at Knapp Chapel with Rev. Francis A. La Violette and then body was shipped to Tacoma, WA. 8/11/1926 for a grave site service 3 PM, buried at a Tacoma Washington Cemetery. Charged to son Lynn W. Bostwick. Parents were Seth Erin Rhodes and mother not listed.

SHOREY, KEPLER SAMUEL

b. 10/24/1926 North Dakota, d. 9/16/1926, age 41y 10m 12d, single, farmer, lived at Mt. Norway, Clark County WA. died at farm residence at Mt. Norway of a suicide by a gun shot to the head, attended by Coroner W.H. Knapp of Vancouver, funeral 9/25/1926 2:30 PM at Knapp Chapel with Rev. Mahon, buried at Park Hill Cemetery A 427-5 (no marker). Ordered by mother and sister, charged to sister Maud Shorey of Washougal, WA. Parents were Samuel Shorey born in Maine and Lizzie Kennish.

ARMSWORTHY, AMANDA A.

9/24/1862 Washington, d. 9/27/1926, age 64y 0m 3d, widow of Henry R. Armsworthy (1859-1922), housewife, Congregational, lived at Washougal, WA., died at Washougal of suicidal hanging attended by Coroner W.J. Knapp of Vancouver, buried at Washougal Cemetery Sec. 9 Middle (has marker). Ordered by mother Mrs. Harriet Turk (1845-1931). Charged to Estate with Ellis Laird (administrator) and mother. Parents were John Mitchell born in Indiana and Harriet Boots born in Missouri.

MARTIN, EDWARD

b. 2/15/1854 Iowa, d. 9/29/1926, age 72y 7m 14d, widower, farmer, lived at Rt. #1 Vancouver, WA., died at St. Vincent Hospital in Portland, OR. of carcinoma of the liver attended by Dr. Brooks of Portland, OR., funeral 10/2/1926 10 AM at Knapp Chapel with Rev. Burten G. Clemens, buried at Park Hill Cemetery A 428-1 (no marker). Charged to R.J. & A. Slothower of RT #3 Vancouver, WA. Parents were G. Martin born in Pennsylvania and Bessie Katie born in Ireland.

TAYLOR, WAYNE

b. 7/20/1916 Portland, Multnomah, Oregon, d. 9/29/1926, age 10y 2m 9d, lived at Brush Prairie, WA., died at St.

Joseph Hospital (Vancouver) of a fracture of the skull due to an auto accident attended by Dr. Herbert Leiser of Vancouver, funeral 10/2/1926 2:30 PM at the Brush Prairie Baptist Church with Rev. J.L. Garrett, buried at Brush Prairie Cemetery (no marker-no record) may be in plot "S" with parents. Charged to father Lionel F. Taylor. Parents were Lionel F. Taylor (1878-1958) born in Kansas and Margaret L. Ward (1870-1937) born in Nebraska.

THOMPSON, MARY E.

b. 11/19/1840 Illinois, d. 10/2/1926, age 85y 10m 13d, widow of Francis A. Thompson (1830-1915), housewife, lived at RT #2 (near Orchards area of Vancouver, WA.) died at home of pneumonia attended by Dr. A.W. Stevenson of Vancouver, funeral 10/5/1926 2:30 PM at Knapp Chapel with Rev. J.T. Jacobs, buried at Sifton Cemetery B 9-96-1 (has marker). Ordered by and charged to Mrs. Nellie Jones (administrator) 812 Grant St., Vancouver, WA. Parents not listed.

SHARP, MATHIAS CLIFFORD

b. 3/3/1861 Iowa, d. 10/3/1926, age 65y 7m 0d, married to Sarah Zulima Jane Sparks (1862-1949) dau of Edwin Sparks and Priscella Spurgeon), plumber-tinner, Christian, lived at 2121 Broadway St., Vancouver, WA., died at home of a stroke and heart failure attended by Dr. Robert D. Wiswall of Vancouver, funeral 10/6/1926 10:30 AM with Rev. Dr. Herbert Jones, buried at Vancouver City Cemetery SE 38-5 Line 11 (has marker). Ordered by Walter Winfield Sparks and wife (Mary Elizabeth Poe Spurgeon (m. #1 to Henry Spurgeon) and Don. Charged to wife Sarah Zulima Jane Sparks. Parents were John D. Sharp born in Missouri and Nancy Spurgeon born in Ohio. Note: There was a large crowd at the chapel and a record number of flowers.

HAGNES, RAGNHILD

b. 12/22/1851 Norway, d. 10/5/1926, age 74y 9m 13d, widow, housekeeper, lived at the residence of Mrs. A.J. Mills RT. #3 Vancouver, WA., died at home of a stroke and heart trouble attended by coroner W.J. Knapp of Vancouver, funeral was at Great Falls Montana at the W.H. George CO. Shipment on 10/8/1926, buried at a Cemetery in Great Falls Montana. Ordered by and charged to daughter Mrs. A.E. Abrahamson of 605 East 26th St., Vancouver, WA. Parents not listed.

HUNTER, HORACE GRAYSON

b. 10/9/1926 Vancouver, Clark County Washington, d. 10/9/1926, age 0y, Child-boy, lived at 2130 East 6th St., Vancouver, WA., died at home a stillborn attended by Dr. L.E. Hockett of Vancouver, funeral 10/9/1926 at grave site, buried at Vancouver City Cemetery NE 205-1 Line 4 (has marker). Charges not listed. Parents were Mr. & Mrs. W.S. Hunter.

KRAMER, MARGARET

b. 5/15/1851 Germany, d. 10/9/1926, age 75y 4m 24d, widow of Peter Kramer (1850-1920), housewife, lived at 59th & Daniels Sts., Vancouver, WA., died at home of a stroke attended by Dr. Robert D. Wiswall of Vancouver, funeral 10/12/1926 9 AM at St. James Catholic Church with Rev. Father M. Bohan, buried at St. James Acres Cemetery 198/11 (has marker). Charged to daughter and sons, Nicholas & Perry [Penny?] Kramer, both of Vancouver, WA.; John Kramer of Portland, Or. and Matt Kramer of Ridgefield, WA. Charged to John Kramer. Parents were John Zenz and Anna Gillianback both born in Germany.

ALGAR, MARSHALL BENTON

b. 4/19/1887 Washington, d. 10/25/1926, age 39y 6m 5d, married to Nellie E. Algar, farmer, lived at Rt. #1 Orchards area of Vancouver, WA., died at home of mediastinum sarcoma (the division of the chest cavity down to the sternum backward, dividing the cavity into two parts and enclosing all of the thoracic organs but the lungs) attended by Dr. Henry C. Leiser of Vancouver, funeral 10/27/1926 1 PM at Knapp Chapel with W.O.W. #85 (?), buried at Sifton Cemetery (no marker-no record may be in A 11 Lot 6 beside his mother. Ordered by wife Nellie and brother Ed Algar. Charged to wife. Parents were George Algar and Rose Yates (1862-1899) both born in Kansas.

SHELDON, SARAH

b. 1867 Nebraska, d. 10/25/1926, age 59y, single, housewife, lived at La Center, Clark County WA. died at home of epilepsy attended by Dr. R.W. Armstrong of Vancouver, funeral 10/28/1926 2 PM with Rev. Edward Cutton, buried at Mt. Zion I.O.O.F. Cemetery (no marker-no-record but may be buried in family plot). Ordered by sister, Mary Cox, and brother Elisha Sheldon (1864-1942) of Valsetz, OR, charged to sister and brother. Parents were Silvester Sheldon and Nancy Johnson both born in Indiana.

COOK, JOHN HENRY

b. 3/9/1891 Finland, d. 10/26/1926, age 35y 7m 17d, single, farmer, Luthern, lived at Hockinson, Clark County WA., died of TB at the Veterans Hospital in Walla Walla WA. attended by their doctor from Walla Walla, funeral 10/30/1926 1 PM at the Hockinson Luthern Church with Rev. Adolph Matson and Rev. A. Engeset, buried at Bethel Luthern Cemetery (has marker). Ordered by brother, Edward Cook. Charged to brother and parents. Parents were Henry Cook and Anna Pentilla both born in Finland. Note: The casket was supplied by the Veterans Hospital at Walla Walla.

JOHNSTON, WILLIAM CHARLES

b. 10/31/1857 Ontario Canada, d. 10/27/1926, age 68y 11m 26d, single, farmer, lived at Orchards area of Vancouver, WA., died at N. W. Merrifield's office of

valvular heart disease attended by coroner William J. Knapp of Vancouver, funeral 10/29/1926 2 PM at Knapp Chapel with Rev. Charles Baskerville, buried at an unknown cemetery; not listed in a Clark County Washington Cemetery. Ordered by and charged to Mrs. Grace Stevens Rt. #1 Orchards WA. Parents were William Johnston and mother not listed both born in Ireland.

CLEMENT, CHARLES JAMES

b. 2/1/1869 New Hampshire, d. 10/30/1926, age 57y 8m 29d, married to Anna Marie Clement, farmer, lived at Rt.#2 Box 105 Orchards area of Vancouver, died at home of valvular heart disease attended by Coroner William J. Knapp of Vancouver, funeral 11/1/1926 3 PM at Knapp Chapel with Rev. Charles Baskerville, buried at Park Hill Cemetery Sec. G (no marker). Charged to wife Anna Marie Clement, James M. Sprecht bought the plot and was paid by Mrs. Clement. Parents not listed.

ALSTEEN, EDMUND

b. 10/5/1922 Wisconsin, d. 11/9/1926, age 4y 1m 4d, single, Child, Catholic, lived in the Image area of Vancouver (between McLaughlin Heights and Ellsworth), died on the N. B. Highway near Vancouver of a fractured skull caused when hit by an auto driven by Leo Jermann attended by Coroner William J. Knapp of Vancouver, funeral 11/11/1926 10:30 AM at the grave site with Rev. Father John Egan, buried at St. James Acres Cemetery (no marker-no record - may be in 107/11 with parents. Ordered by father. Charged to Leo Jermann of Camas. Parents were Thomas J. Alsteen (1892-1959) born in Michigan and Ella M. Garrow (1898-1967) born in Wisconsin.

DOUGLAS, SUSAN MALINDA

b. 6/15/1865 Iowa, d. 11/17/1926, age 61y 5m 2d, married to C.J. Douglas, housewife, Christian Science, lived at Rt. #6 Box 108 Vancouver, WA., died at home no cause of death listed attended by Dr. A.W. Stevenson of Vancouver, funeral 11/19/1926 2 PM at Knapp Chapel with a Christian Science reader Mrs. Fan, buried at a cemetery not listed; not in a Clark County Washington cemetery. Ordered by and charged to husband C.J. Douglas. Parents were Aaron Reeves born in Ohio and Mary Ann Golliday born in Indiana.

PARTHENAY, ALEX

b. 9/6/1850, d. 11/19/1926, age 76y 2m 13d, divorced, farmer, Catholic, lived at RT. #2 Box 157 Vancouver, WA. died at home of a cerebral hemorrhage attended by Dr. R.W. Armstrong of Vancouver, funeral 11/22/1926 9:30 AM with Rev. Father Carraher, buried at St. James Acres Cemetery (has marker). Ordered by and charged to E.F. Parthenay. Parents were Jean Parthenay and Genevieve Boureau both born in France.

LARSON, NANCY I.

b. 8/26/1886 Idaho, d. 11/22/1926, age 40y 2m 26d,

married to J. R. Larson, housewife, Christian, lived at 3708 Q St., Vancouver, WA., died at home of heart disease attended by Dr. L. E. Hockette of Vancouver, funeral 11/26/1926 2 PM at Knapp Chapel with Rev. Dr. Herbert F. Jones, buried at Park Hill Cemetery A 393-4 (has marker). Ordered by and charged to husband J.R. Larson. Parents were Jensen and Ingar Yolson both born in Sweden.

TEALE, CHARLES HENRY

b. 9/20/1839 Ohio, d. 11/23/1926, age 87y 2m 6d, widower, retired farmer, Christian, lived at Battle Ground, WA., died at 15 E. 72nd St., Portland, OR. of pneumonia attended by Dr. A.V. Downs of 401 Times Bldg. Portland, OR., funeral 11/27/1926 2 PM at Knapp Chapel with Rev. Dr. Herbert F. Jones, buried at Park Hill Cemetery A 418-3 (has marker). Ordered by and charged to J.C. Teale. Parents were father not listed and mother Mary Clark born in Virginia.

PETERSON, CHARLES MAGNUS

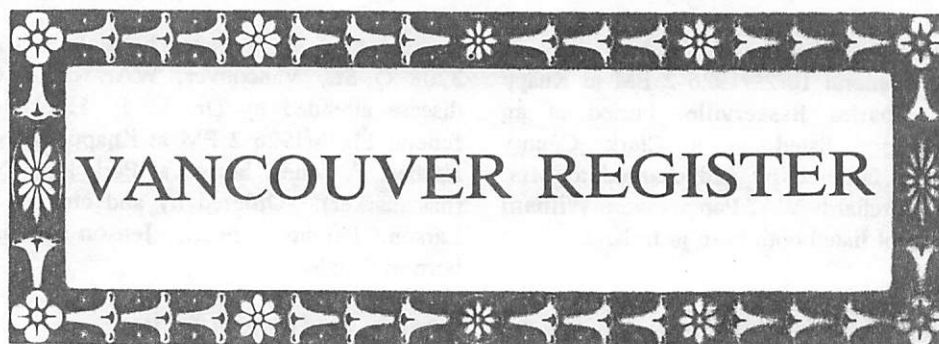
b. 5/11/1853 Sweden, d. 11/26/1926, age 73y 6m 13d, married to Minnie Peterson, retired farmer, Lutheran, lived at 915 Esther Ave., Vancouver, WA., died at St. Joseph Hospital of chronic interstice nephrytice (a small opening hole, or space in a tissue, a series of tissues, or an organ) attended by Dr. A.W. Stevenson of Vancouver, funeral 11/30/1926 1 PM at Knapp Chapel with Rev. Luther B. Deck, buried at Rose City Cemetery in Portland, Oregon. Ordered by and charged to wife Minnie Peterson. Parents not listed.

HAINES, WILLIAM SPENCER

b. 2/3/1865 Indiana, d. 11/29/1926, age 61y 9m 26d, single, retired soldier, lived at Walnut Creek, California died at home of a cerebral hemorrhage attended by a Contra Costa, California Coroner, funeral (body shipped from Walnut Creek by R.B.Harlan Funeral Directors to Knapp Funeral Chapel) services 12/4/1926 2 PM at Knapp Chapel with Chaplain O.I. Clappitt, buried at Park Hill Cemetery A 128-5. Ordered by Walter and brothers of Walnut Creek, California. Charged to Estate % Public Administration of Walnut Creek R.B. Johnson of Martinez, CA. Parents were W.P. Haines/Haynes and mother not listed both born in Indiana.

THOMPSON, JOHN WILLIAM

b. 4/6/1861 Missouri, d. 12/1/1926, age 65y 7m 25d, married to Malinda J. Thompson (1866-1949 E-14 has marker), grocery store merchant, Christian, lived at 1928 F St., Vancouver, WA., died at home of bronchial pneumonia attended by Dr. R. W. Armstrong of Vancouver, funeral 12/5/1926 2:30 PM at Knapp Chapel with Rev. Dr. Herbert F. Jones, buried at Park Hill Cemetery a 494-5. Ordered by and charged to wife Malinda Thompson. Parents were Samuel Thompson and Nancy Sims both born in Missouri.



The "VANCOUVER REGISTER" has been abstracted by CCGS member Pat Bauer from a microfilmed copy in the Fort Vancouver Library. Copies of the "Register" are held by the Clark County Historical Society. Some issue have become lost. Items of local interest for genealogists and historians have been copied. The [] following articles indicate the [page # / column #].

Continued from June 27, 1868

C. M. LOCKWOOD, Esq., Republication candidate for State Senator from Wasco county, will contest **TREVITT**'s election. Trevitt claims to have been elected by a majority of two votes. [3/1]

Buy your doors and windows of **ANDREW RIGGS** - Dry Goods from **MIKE WINTLER**. [3/1]

MRS. WRIGHT will give a party at her house at Washougal on the 3d July. Tickets \$2.00. [3/1]

July 4, 1868

COLLEGE EXAMINATION. - We attended the exhibition at Holy Angels' College on Wednesday evening. * * * The intervals between the acts were filled by performances on the piano, the performer, **MASTER HAAK**, evincing by his execution of some difficult passages a decided aptitude for a musician. * * *

Of course, the leading spirit of the exhibition, was that very competent teacher and genial gentleman, the **REV. FATHER MANS**, who seems to possess the rare quality of understanding that to make study sought after it must be made attractive. * * * [3/1]

MRS. FOX'S WRITING SCHOOL. - We have seen specimens of writing by some of the pupils of Mrs. Fox, and perceive quite an improvement since they commenced under her tuition. * * * [3/1]

PERSONAL. - **FRANK RASCHER**, Q.M. Sergeant of this post, and withal a genial gentleman, returned on Saturday from Fort Boise.

GEORGE T. HODGES, Chief Engineer of the V.F.D., left for Victoria on Wednesday.

Messrs. **JAMES A. ORR**, **ROBERT DOWNING** and other Vancouver mechanics, left here on Monday last for the Dalles, under engagement with the contractors who have undertaken the erection of a woolen factory at that place. The work will last all summer. [3/1]

THANKS. - Hon. **ALVAN FLANDERS** has placed us under renewed obligations. Mr. F. seems ever mindful of the importance of keeping the newspapers of his district posted on all subjects pertaining to its interests. [3/1]

EXTRA TRIP. - **MR. TROUP**, engineer of the *Fannie Troup*, informs us that the steamer will make her usual trip from Vancouver to Portland on the morning of the 4th and in the afternoon will make an extra trip, leaving Vancouver at 5 o'clock p.m., in order to enable the people who remain at home during the day, to witness the display of fireworks in the evening. [3/2]

MARRIED. - In this city, on the 2d inst., by **REV. D. L. SPAULDING**, Mr. **J. W. PAUL** to Miss **SARAH PITNER**, both of Clarke County. [3/2]

July 11, 1868

SPIRIT OF THE TERRITORIAL PRESS.

THE DROWNED MAN. - We have already noticed the drowning of **JOHN RODDIE**, who was drowned in the Snake River on the 8th ult. We now learn that the deceased was a native of Nova Scotia, and aged about 32 years. At last accounts he had one brother living at Volcano, Amador county, California, and two brothers residing in Nevada. His friends can learn further particulars by addressing **ELIAS CAPON**, Walla Walla. [2/4]

The following was taken from the *Olympia Standard*:

RARE TALENT. - We are indebted to Miss **CLARA MYRES** for a beautiful pencil drawing of "Linwood Castle," 16 x 20 inches size, which certainly indicates extraordinary talent in the fair artist. * * * [2/4]

PREMIUMS AWARDED.

The following are the names of the students and the class of studies for which they were awarded premiums, at the examination at Holy Angel's College, on the 30th ult. [I have listed only the names in this copy because of the length of the article. PB]

JOSEPH BUTLER, JAMES BRADLEY, JOSEPH BRANT, FRANK LEAHY, MARTIN LYNCH, JAMES WILKES, H. HAGENBURGER, JAMES DAVIDSON, P. PADDEN, ANDREW HAACK, JAMES LEAHY, GEORGE CRAIG, MICHAEL PADDEN, FRANK BURTEN, NAPOLEON BIHAN, JOHN D. CURTIN, THOMAS LEAHY, CHARLES O'CONNOR, JAMES O'CONNOR, THOMAS CURTIN, PETER DAMPHOFFER, STEPHEN JOHN MURPHY, EDWARD GINTY, EDWARD BATTERSBY. [2/6]

MEETING OF TEACHERS AND FRIENDS OF EDUCATION.

Pursuant to notice, the teachers and friends of education in Clarke County, W.T., met at the public school-house, in Vancouver, on 3d inst. at 4 o'clock p.m.

The meeting being called to order, was duly organized by the election of **S. W. BROWN**, as chairman, and **JULIUS SUISTE**, as secretary. * * *

The Chair having appointed **I. T. MAULSBY, JULIUS SUISTE**, and **S. NICHOLSON**, it was resolved that an invitation be extended to all persons having an interest in the cause of education to attend the next meeting of the association. * * * [2/6]

HOW WE SPENT THE FOURTH. - The celebration of the 92 anniversary of our national birth in this place was on a scale of unusual magnificence. * * *

At 10 1/2 o'clock the line of march was taken up, the elements filing off in the following order:

1st. **CAPTAIN KISTLER**, Marshal, mounted and in full uniform; 2d, Liberty Car; 3d, Carriages containing the President, **GEORGE W. DURGIN**, Esq., and lady; Hon. **J. D. POTTER**, Reader; 4th, Cavalry Band; 5th, Vancouver Fire Engine Company No. 1, commanded by **M. WINTLER**; 7TH, Vigilance Hook & Ladder Company No. 1, commanded by **JOHN MIDDLETON**, Esq., foreman; 8th Citizens on foot; 9th, Citizens in carriages; 10th, Citizens on horseback. * * *

After an earnest and thrilling prayer by the **REV. H. K. HINES**, **MR. POTTER** was introduced by the President and proceeded to read the Declaration of Independence in a most admirable manner. * * * [3/1]

THANKS. - The committee of Arrangements desire us to thank **MRS. FIELD** and **MRS. WOOD** for kindly assisting in arranging the tables, etc., for the collation. [3/2]

ERRATA. - In the account of the celebration we neglected to mention that in the absence of the Chief Engineer the command of the Fire Department devolved on **J. W. NICHOLS**, 1st Assistant, and **H. B. WOOD**, 2d Assistant Engineers. The Assistant Marshals were **SERGEANT MAJOR BOUTELLE** and **JACOB PROEBSTEL**, junior. [3/2]

We are pleased to record that **COL. BRACKETT**, commanding officer of this post, who has been so severely indisposed as to be confined to his bed for many days, is rapidly convalescing. [3/2]

CHANGE OF SURGEONS. - **DR. BILL**, Surgeon, U.S. Army, late of Philadelphia, has relieved **DR. CHASE** as Post Surgeon. Dr. Chase has his choice either to accept the position of Post Surgeon at Fort Colville or a professorship of *Materia Medica* in the Willamette University. The Doctor is in a quandary. [3/2]

July 18, 1868

IMPROVEMENTS. - Mr. **JOHN O'KEANE** has lately occupied a handsome little dwelling house which he has erected on Seventh street about two blocks west of the Public Square.

Mr. **WM. H. TROUP** has also on the point of completion a spacious and elegant residence on Fifth street.

Mr. **WM. STEVENS** has the foundation for an addition to his bakery laid. [3/1]

THE AGRICULTURAL SOCIETY. - In pursuance of notice a number of agriculturalists met in this place on Saturday last for the purpose of organizing an Agricultural Society for Clarke County. The chair was occupied by Mr. **LEWIS VAN VLEET**. * * * [3/1]

BURGLARY. - The saloon known as the "Reserve," kept by **MR. SCHWARTZENBURG**, was entered on Monday night last and robbed of \$60 in coin and about \$20 worth of music books. * * * [3/1]

REMEMBERED THE PRINTER. - Our friend **JARED VAN VLEET** kindly remembered the poor printers in the midst of all his happiness and supplied them liberally with wedding cake. Dame Fortune never forgets those who never forget the printer. [3/1]

OPPORTUNE. - **GEORGE T. HODGES**, Esq., returned from Victoria on Monday just in time to perform the last sad office to a friend on the point of "kicking the bucket" - of bachelorhood. [3/1]

MARRIED.

In this city, July 13th, 1868, by and at the residence of **REV. FATHER JOUNGER**, MR. **JARED VAN VLEET**, and Miss **LUCY DUPUIS**.

At Fort Vancouver, July 13th, 1868, by **J. F. SMITH**, J.P., Mr. **WILLIAM GLANDYS** and Miss **ADELAIDE M. BELLANGER**. [3/1]

August 1, 1868

AGRICULTURE MEETING.

Pursuant to notice and adjournment, a meeting of the citizens of Clarke county, having for their purpose the organization of an Agricultural and mechanical Society, met at Brant's Hall in Vancouver, July 25th, at 1 o'clock p.m., with **L. VAN VLEET**, Chairman and **A. McANDREW**, Secretary. * * *

The following persons, to wit: **LEWIS VAN VLEET**, **GAY HAYDEN**, **ALEX. McANDREW**, **S. D. MAXON**, **M. R. HATHAWAY**, **H. K. HINES**, **I. T. MAULSBY**, **G. S. HATHAWAY**, **S. W. BROWN**, **JULIUS SUISTE**, **T. C. PALMER**, adopted and signed articles of incorporation, for an organization henceforth to be called the "Clark County Agricultural and Mechanical Society."

The Society then duly organized by electing for officers the following persons, viz: - President, **LEWIS VAN VLEET**; Vice Presidents, **M. R. HATHAWAY** and **S. W. BROWN**; Secretary, **JULIUS SUISTE**; Treasurer, **S. D. MAXON**.

EXECUTIVE COMMITTEE: Vancouver precinct, **GAY HAYDEN**; Patterson precinct, **A. McANDREW**; Preston precinct, **H. M. KNAPP**; Fern Prairie precinct, **T. M. COFFEE**; Lancaster precinct, **C. LANCASTER**; Pollock precinct, **JOHN TIMMONS**; Battle Ground precinct, **PALMER**; Lackamas precinct, **T. T. CLARK**; Washougal precinct, **C. C. STILES**; Salatchee precinct, **A. B. SILLY**. * * * [2/2]

A BRICK YARD. - Messrs. **JOSIAH** and **ISAAC SPENCER**, of Union Ridge precinct, write to us that they are about to commence the manufacture of brick in that neighborhood. * * * [2/3]

DAVID MANSFIELD, of Norton, Norfolk county, Massachusetts, was one hundred years old on the ninth day of September last. He remembers the battle Bunker Hill, which occurred when he was in his eighth year. He heard the thunder of the cannon from his residence in Roxbury. He has voted from the time of Washington up to the present day. [2/3]

PERSONAL. - CAPTAIN GEORGE WILLIAMS, United States Army, was here the day before yesterday, and returned on the boat yesterday morning to Portland. The Captain is now Acting Adjutant General for the military district of Oregon, and in the absence of **GEN. CROOK** (in the field) is practically in command. He is a young officer, and has won his present high rank and position by actual service. He went into the army, a boy, at the beginning of the war; he served all through it faithfully and creditably, and he is now on duty in his native State. He was an Oregon *boy* - he is now an Oregon *man*. We all ought to be proud of him. [2/4]

A NEW BARBER. - Nothing is more needed in a town like this than a good barber. We may now congratulate ourselves on so valuable an acquisition. Mr. **LOUIS YOUNG**, a competent *artiste*, has bought out **MR. WALTHERS** and will be always found on hand when his services are required. [3/1]

IMMERSED. - The, to many, novel sight of baptizing by immersion was witnessed by a large concourse of persons, in this place, on Sunday last. The Columbia river answered for a baptismal font. **REV. H. K. HINES** performed the rites. [3/1]

A New Associate Judge of the Supreme Court of the Sandwich Islands has been appointed in the person of **GEN. A. S. HARTWELL** of Massachusetts. He was formerly Colonel of the 55th Massachusetts (colored) Regiment, and is a promising young man. [3/1]

THE EXTINGUISHER. - This invention is highly spoken of by those who have tried it. **MICHAEL WINTLER**, Esq., of this city has been appointed agent for this County. We would advise all persons having valuable buildings either in the city or Country to purchase. Price from \$55.00 to \$75.00 coin. * * * [3/1]

MARRIED.

In this city, on the 30th ult., at the residence of Mr. **JOSEPH WISE**, by **J. F. SMITH**, J.P., Mr. **DAVID BROWN** to Miss **THERESA WEBBER**, both of this place. Compliments of the happy parties received. [3/1]



Ancestor Charts

Ancestor Chart of

Grover Cleveland ALLRED

312 NE 111th St., Vancouver, WA 98685-3924

1. **ALLRED**, Grover Cleveland; b 09 Feb 1927 Como, TX; m Lore Ruth **SCHUHART** 23 Jun 1960.
2. **ALLRED**, Grover Cleveland; b 09 Aug 1884 Russum, MS; m 08 Nov 1909; d 06 Nov 1935 Dallas, TX.
3. **ISOM**, Eliza Lea; b 26 Apr 1888 Grapevine, TX; d Stockton, CA.
4. **ALLRED**, Archibald Baker; b 17 Sep 1853 Copiah Co., MS; m 07 Jan 1881; d 16 Mar 1920 Copiah Co., MS.
5. **WRIGHT**, Alice Simeon; b 19 Nov 1861 Hinds Co., MS; d 21 Jun 1907 Collin Co., TX.
6. **ISOM**, William M.; b 10 Nov 1864 Madison Co., KY; m 31 Jul 1887; d 1937 Dallas, TX.
7. **MCCOY**, Susan Elsie; b 29 Jun 1868 Vernon Co., MO; d Jul 1950 Dallas, TX.
8. **ALLRED**, William Burt; b 08 Dec 1816 Amite Co., MS; m 27 Jan 1831; d 10 Aug 1885 Caseyville, MS.
9. **TECAL/TEACLE**, Susan A.; b 25 Oct 1818 LA; d 01 Feb 1876 Caseyville, MS.
10. **WRIGHT**, Simeon Godwin; b 17 Sep 1836 Marlborough Co., SC; m 09 Oct 1856; d 31 Aug 1862? 2nd battle of Manassas.
11. **MCLAURIN**, Lucy Virginia; b 02 Dec 1834 Marlborough Co., SC.
12. **ISOM**, George William.
13. **JOHNSON**, Amanda.
14. **MCCOY**, Clayton.
15. **DUNAGAN**, Jane.
16. **ALLRED**, John; b 1787; m1 Isabella **BURT** 03 Dec 1812; m2 Eliza Ann **LEACH** 18 Mar 1832; d 02 Jan 1843.
17. **BURT**, Isabella; b abt 1791; d abt 1830.
19. **FORBES**, ??.
20. **WRIGHT**, Duncan C.
22. **MCLAURIN**, Daniel C.

Ancestor Chart of

Sharon (BATES) SCHUTTE

3516 SE 173rd Court, Camas, WA 98607

1. **BATES**, Sharon; b 08 Oct 1935 Portland, OR; m1 Donald L. **JONES** 02 Oct 1953 Salem, OR; m2 Edward C.W. **SCHUTTE** 14 Feb 1987 Salem, OR.
2. **BATES**, Walter Eugene, Jr.; b 09 Feb 1913 Portland, OR; m 10 Jun 1933 Vancouver, WA.
3. **HAMILTON**, Eva Mae; b 09 Dec 1912 McMinnville, OR.
4. **BATES**, Walter Eugene; b 23 Feb 1870 Viroqua, WI; m 10 Jun 1903 St. Louis, MO; d 13 Feb 1948 Portland, OR.
5. **PORTER**, Elinor Rosina (Nellie **CONNER**); b 14 Jul 1875 Louisville, KY; d 04 Jan 1949 Portland, OR.
6. **HAMILTON**, James Perry; b 23 Oct 1872 Liberty Hill, TN; m 26 Jan 1902 Liberty Hill, TN; d 08 May 1942 Rickreall, OR.
7. **WOLFENBARGER**, Arminda; b 29 Mar 1883 KY?; d 11 Aug 1957 Rickeall, OR.
8. **BATES**, John Tyler; b 08 Feb 1843 Albion, Oswego Co., NY; m 03 Oct 1868 Horicon, WI; d 17 Feb 1919 Portland, OR.
9. **CHASE** Marie Antoinette.
10. **PORTER**, Robert.
11. **PRENTIS**, Emily Rosina; b 02 Nov 1835 Yelvington, Hancock Co., KY; d 1876 Louisville, KY.
12. **HAMILTON**, Jasper Tennell; b 23 Oct 1848 Union Co., TN; m 11 Jun 1869 TN; d 30 Mar 1919 Liberty Hill, TN.
13. **BEELER**, Mary Elizabeth; b 22 Mar 1850; d 24 Mar 1893.
14. **WOLFENBARGER** III, Joseph Peter; b 30 Oct 1855?
15. **BEELER**, Oprah; b 1850-55.
16. **BATES**, Abram; b 22 Dec 1803 NY.
17. **TRACY**, Lucinda (Laura?); b 18 Jun 1782 MA.
18. **CHASE**, Lorenzo Dow; b 1819 NY.
19. **AUSTIN**, Lucy A.; b 16 Apr 1821 NY.
22. **PRENTIS**, John; b 1800; d 1849; m 1819.
23. **PETERSON**, Maria (Plumb) Harrison.
24. **HAMILTON**, Jr., Alexander; b 31 Dec 1812 TN.
25. **CASSANDER**, Jane Lay; b 30 Sep 1815 TN.

28. **WOLFENBARGER II**, Joseph Peter; b 20 Jan 1820 TN.
29. **NEEDHAM**, Catherine; b 14 Mar 1822 TN.
30. **BEELER**, Peter; b 1830 Grainger, TN; m 24 Oct 1850.
31. **ELY**, Margaret; b 1829 VA.
32. **BATES**, Jr., Rueben; b 1762.
33. **BULL**, Abigail; b 13 Jul 1774.
34. **TRACY**, Thomas.
35. **CROSBY**, Mary E.
44. **PRENTIS**, William; b London, ENG.
48. **HAMILTON**, Alexander; b 1774.
49. **ADAMSON**, Susanna.
50. **LAY**, William; b 25 Dec 1795.
51. **CAPPS**, Sarah; b 14 Jan 1797.
56. **WOLFENBARGER**, Joseph Peter; b 12 Oct 1783.
57. **HANSEN**, Nancy; b 1789.
58. **NEEDHAM III**, John.
59. **BROCK**, Polly.
60. **BEELER**, Peter; b 23 Feb 1802 VA.
61. **WOLFENBARGER**, Lavina; b 1808 TN.
62. **ELY**, John T.; b 1790 VA.
63. **JONES**, Margaret; b 1798 VA.
64. **BATES**, Rueben.
65. **MARBLE**, Susanna; b 30 Jul 1738 MA..
66. **BULL**, Abraham.
67. **PAYNE**, Abigail.
88. **PRENTICE**, ??; b London, ENG; d 01 Jan 1789 London, ENG.
112. **WOLFENBARGER**, Peter; b 1752.
113. **MILLER**, Susanna; b 1755.
116. **NEEDHAM II**, John; b 1745.
117. **JENNINGS**, Anna Letitia.
118. **BROCK**, George; b 1777.
119. **DYER**, Amey.
120. **BEELAR**, Joseph Peter; b 1762 VA; m1 Katherine **PETREE**; m2 Anna _____.
124. **ELY**, John; b 1755 VA.
125. **FRY**, Barbara Jane; b 1760 VA.
128. **BATES**, John.
129. **BAILEY**, Abigail.
130. **MARBLE**, Nathaniel.
132. **BULL**, Isaac.
133. **BROWNING**, Rebecca.
224. **WOLFENBARGER**, Jr., John; b 1724-30 Alsace, FR; d 18 Nov 1788 PA; m 1751 PA.
225. **SUMNER**, Hannah.
232. **NEEDHAM**, John; b ENG.
233. **BROTHERS**, Elizabeth.
240. **BEELER**, John; b 04 May 1730.
248. **ELY**, Thomas; b 1725 ENG; m 1750 Bedford, VA.
249. **SMITH**, Jane; b 1730 Dublin, IRE.
256. **BATES**, Caleb.
257. **LANE**, Mary.
258. **BAILEY**, Jr., John.
259. **CLAPP**, Abigail.
448. **WOLFENBARGER**, John; b 1694-95 SWZ; d 1760-61; m 1721.
449. **ENSMINGER**, Ann Margaretha; b 1697; d 1755.
480. **BEELER**, Jacob; m1 Mary; m2 **YODER**; m3 **KALLEN**.
512. **BATES**, Joseph.
513. **HILLYARD**, Esther.
514. **LANE**, Josiah.
515. _____, Mary.
516. **BAILEY**, John.
517. **WHITE**, Sarah.
518. **CLAPP**, Samuel.
519. _____, Hannah.
896. **WOLFENBERGER**, Erhardt.
897. **EMM**, Ursula; b Alsace, FR.
898. **ENSMINGER**, Phillip.
899. _____, Elizabeth.
1024. **BATES**, Clemet/Clement.
1025. **TAYLOR**, Anna.
1026. **HILLYARD**, William.
1034. **WHITE**, Richard.

Ancestor Chart of
Sharon Mae (BOOTH/WALL)
WODTKE

12918 NE 7th Ave, Vancouver, WA 98685-2659

1. **WALL?**, Sharon Mae **BOOTH**; b 31 Jul 1947 Astoria, OR; m 12 Nov 1971 Vancouver, WA.
2. **WALL?**, Freddie Eugene; b 16 Dec 1922 Chambersville, TX; d 02 Nov 1982 Amarillo, TX; m1 Anna May **SARTORS** 31 Dec 1945 Hammond, Clatsop, OR; m2 Mae _____; m3 Alex _____; m4 Ruth Mae _____; m5 Zinita Mae _____.
3. **SARTORS**, Anna May; b 15 Jan 1928 Superior, NE; m1 Freddie Eugene **WALL?** 31 Dec 1945 Hammond, Clatsop, OR; m2 Richard **WILSON** 1950; m3 Melvin LeRoy **BOOTH** 14 May 1954 Stevenson, WA.
5. **DANIELS**, Vena Gladys; b 20 Nov 1903 Red Rock, TX; d 22 Jan 1992 Shamrock, TX; m1 Thomas Afton **WALL** 16 Mar 1927 McKinney, TX; m2 _____.

6. **WILSON**, Robert Otto **SARTORS**; b 09 Jun 1891 Iberia, Miller Co., MO; d 28 Jan 1951 Hammond, OR; m 18 Apr 1920.
7. **CHURCH**, Margaret Ann Minerva; b 03 Feb 1904 Lebanon, MO; d 12 Oct 1990 Vancouver, WA; m 18 Apr 1920.
10. **DANIELS**, Walter.
11. **SPEERS**, Sarah.
14. **CHURCH**, Clark William; b 14 Aug 1872 Wheeling, Ohio Co., WV; d 01 Oct 1934 Lebanon, MO; m 22 Sep 1892 Vienna, MO.
15. **MINZES**, Martha Ann; b 04 Mar 1876 Hayden, Maries Co., MO; d 05 Mar 1961 Dixon, MO; m1 Clark William **CHURCH** 22 Sep 1892 Vienna, MO; m2 John Scott **CROCKETT** 10 Jan 1937 Dixon, MO.
28. **CHURCH JR.**, William Clark; b Jun 1832 Pendleton Co., VA; d OK; m1 Margaret Jane **COOPER** 28 Jun 1866 Mason Co., WV; m2 Ruth (Sukie) **BALLARD** 19 Aug 1897 Maries Co., MO; m3 _____.
29. **COOPER**, Margaret Jane; b 1833 Tyler Co., VA; d 1888 Vienna, Maries Co., MO; m 28 Jun 1866 Mason Co., WV.
30. **MINZES**, Onslow Glenmore Murl; b 11 Jan 1835 Mc Minn Co., TN; d 30 Nov 1917 Maries Co., MO; m1 Sophrona **BUTRAM** 1842; m2 AMERICA ANN **TURNER** 21 Oct 1856 Douglas Co., MO.
31. **TURNER**, America ANN; b 25 Dec 1838 KY; d 31 Jan 1909; m 21 Oct 1856 Douglas Co., MO.
56. **CHURCH**, William Clark; b 1778; m 03 Apr 1828 Franklin, WV.
57. **JOHNS**, Elizabeth; b 1808; m 03 Apr 1828 Franklin, WV.
58. **COOPER JR.**, John D; b 15 Aug 1800 PA; d 03 Feb 1896 Tyler Co., WV; m1 Sarah A **HAGERMAN** 24 Mar 1823 Newtown, PA; m2 Susan Margaret **BLAND** 1849 Wetzel CO., WV.
59. **BLAND**, Susan Margaret; b 19 Jul 1816 VA; d 28 Feb 1905 Tyler CO., WV; m 1849 Wetzel CO., WV.
60. **MINZES**, Ewing S.
61. **DODSON**.
62. **TURNER**, James C; b 04 Jan 1816; m 1837.
63. **BARR**, Sarah Agnes; b 18 Jan 1821; m 1837.
116. **COOPER**, John D; b IRE.
117. **PRATER**, Nancy; b VA.
118. **BLAND**, Thomas; m WV.
119. **MCCULLOUGH**, Elizabeth; m WV.
120. **MINZES**, Joseph Jr.; b 23 Mar 1787 ? Rowan Co. NC; d Aug 1848 McMinn Co., TN; m 03 Feb 1809 Wayne Co., KY.
121. **SUMMERS**, Margaret (Peggy); d 17 Sep 1868 Meigs Co., TN; m 03 Feb 1809 Wayne Co., KY.
126. **BARR**, Silas; b 1782.
127. **HUDDLESTON**, Sarah.
240. **MINZES**, Joseph; b 09 Apr 1755 Charleston, SC; d 14 Apr 1849 Saline, IL; m1 Margaret **BUTRAM** 26 Oct 1779 Rowan CO., NC; m2 Margaret **KNATZER** Nov 1794 Rowen Co., NC.
241. **BUTRAM**, Margaret; m 26 Oct 1779 Rowan CO., NC.
252. **BARR**, Caleb; d 1823.
254. **HUDDLESTON**, William; b 1740; m 13 Aug 1766.
255. **SMART**, Elizabeth; b 1747; d 1821; m 13 Aug 1766.
480. **MINZES**, Andrew; b SCT; d Rowan Co., NC.
504. **BARR**, William; b 1716; d 1764.
505. **FOWLER**, Esther.
508. **HUDDLESTON**, Daniel; b 1720.
509. **BALL**, Mary.
510. **SMART**, William; b 1720.
511. _____, Isabella.
1016. **HUDDLESTON**, John; b 1693.
1017. **CHARLTON**, Elizabeth.
1020. **SMART**, John; b 1663 Warwick, ENG.
2040. **SMART**, John; b 1623 SCT.

Ancestor Chart of

Rose (CAPODICE) KAPRANOS

2026 NW Sierra Ln., Camas, WA 98607-2534

1. **CAPODICE**, Rose Virginia; b 16 Dec 1923 Oak Park, IL; m Spiro William **KAPRANOS** 26 Jun 1943 Chicago, IL.
2. **CAPODICI**, Joseph; b 12 Feb 1899 River Forest, IL; m 21 Dec 1921 Forest Park, IL; d 02 Dec 1982 Hinsdale, IL.
3. **GUARDALABENE**, Anna Frances; b 23 Nov 1903 Forest Park, IL; d 11 Apr 1986 Lombard, IL.
4. **CAPODICI**, Mariano (Martin); b May 1876 Termini Imerese, IT; m 17 Apr 1898 Chicago, IL; d 30 May 1940 Chicago, IL.
5. **DATTILO**, Rosa; b 28 Sep 1881; d 26 Oct 1955 Crown Pt. IN.
6. **GUARDALABENE**, Marino; b 28 Jul 1877 Termini Imerese, IT; d 17 Mar 1930 Chicago, IL.
7. **BATTAGLIA**, Maria; b 10 Jun 1878 IT; d 19 Aug 1957 Blue Island, IL.
8. **CAPODICI**, Guiseppa; b 27 Dec 1847 Termini Imerese, IT; d 23 Jan 1925? Chicago, IL.

9. **SCOLARO**, Rosalie; b 1851; d Feb 1936 Chicago, IL.
10. **D'ATTILO**, Tommaso Antonio.
11. **CRAVELLA**, Neda Gerolama.
12. **GUARDALABENE**, Marino.
13. **LOCOCO**, Maria.
14. **BATTAGLIA**, Stefano; m 18 Jan 1862.
15. **GRAZIANO**, Anna Maria.
25. **MANGANELLO**, Providenza.
26. **LOCOCO**, Vincenzo.
27. **BARONE**, Maria.
31. **QUATTROCCHI**, Domenica.

Ancestor Chart of

Jennifer (COOK) WARREN

10712 NW 11th Av., Vancouver, WA 98685

1. **COOK**, Jennifer Taft; b 15 Jun 1939 Santa Monica, CA; m James Willis **WARREN** 28 Mar 1981 LaCrosse, WI.
2. **COOK**, Thomas Ira; b 31 Mar 1907 Hadleigh, ENG; m 21 Jun 1930 Glen Ridge, NJ; d 10 Aug 1976 El Paso, TX.
3. **PELOUBET**, Anna Taft; b 06 Nov 1906 Glen Ridge, NJ; d 22 Apr 1965 Santa Monica, CA.
4. **OPPENHEIMER**, Heinrich; b 1870-71 Wurzburg, GER; m 21 Jun 1928 Hamstead, ENG; d 1933-34 London, ENG.
5. **STURGIS**, Myra; b 12 Feb 1872 Bulford, Wilts, ENG; d 1955-56 London, ENG.
6. **PELOUBET**, Henry Spalding; b 16 Apr 1870 Bloomfield, NJ; m 19 Oct 1898 Bloomfield, NJ; d 22 Mar 1935 FL.
7. **TAFT**, Grace Rood; b 08 Aug 1872 South Egremont, MA; d 07 Jul 1946 Santa Monica, CA.
8. **OPPENHEIMER**, Isaac.
9. _____, Henrietta.
10. **STURGIS**, Frank.
12. **PELOUBET**, Samuel; b 27 Feb 1846 Bloomfield, NJ; m 18 Oct 1868; d 02 Nov 1896 Bloomfield, NJ.
13. **SPALDING**, Lucinda Ashley; b 14 Mar 1849 MA; d 06 Sep 1930.
14. **TAFT**, Roscoe Chancy; b 22 Feb 1836 Sheffield, MA; m 14 Sep 1864 Egremont, MA; d 17 Apr 1913.
15. **BENJAMIN**, Susan Emma; b 19 Apr 1839; d 19 Nov 1877.
24. **PELOUBET**, Louis Michel F.C.
25. **HANKS**, Harriet.
28. **TAFT**, Archibald.
29. **ROOD**, Lydia Maria.

30. **BENJAMIN**, Calvin Wills.
31. **MOOR**, Ann Eliza.

Ancestor Chart of

Jeannie Mae (ZORTMAN) WELLWOOD

6617 NE 137th St, Vancouver, WA 98686

1. **ZORTMAN**, Jeannie Mae; b 21 Aug 1964 Salem, Marion Co., OR; m 12 Feb 1993 Vancouver, Clark Co., WA, Larry Gale **WELLWOOD**.
2. **ZORTMAN**, Daniel David; b 20 Aug 1942 Niagara Falls, NY; m1 06 Feb 1963 Winchester, VA, May Arlene **BARBER**; div 1983; m2 22 Jun 1984, Julee **BARNETTE**.
3. **BARBER**, May Arlene; b 06 Aug 1945 Randolph, NY; m 06 Feb 1963 Winchester, VA; div 1983.
4. **ZORTMAN**, Arthur Daniel; b 23 May 1917 DuBois, PA; m 17 Sep 1938 at Clearfield, Clearfield Co., PA.
5. **MCGARVEY**, Eva Mae; b 07 Sep 1917 Pumpkin Ridge, Chest Twp., Clearfield Co., PA; m 17 Sep 1938 Clearfield, Clearfield Co., PA.
6. **BARBER**, Clair Griffith; b 06 Mar 1904 Onoville, Cattaraugus Co., NY; m 15 Feb 1934 Steamburg, Cattaraugus Co., NY; d 21 May 1960 Perrysburg, Cattaraugus Co., NY.
7. **WITHERIL**, Verona May; b 08 Feb 1912 Sardinia, Erie Co., NY; m 15 Feb 1934 Steamburg, Cattaraugus Co., NY; d 22 Sep 1987 Salamanca, Cattaraugus Co., NY; bur 25 Sep 1987 Sardinia Cemetery, Sardinia, Erie Co., NY.
8. **ZORTMAN**, Daniel Jacob; b 15 Feb 1896 DuBois, PA; m 29 Apr 1917; d 18 Oct 1980 Clear Haven, PA; bur Union Cemetery, Luthersburg, PA.
9. **KELLER**, Ruby Elizabeth; b 25 Feb 1897 Penfield, PA; m 29 Apr 1917; d 13 Mar 1952 Clearfield, Clearfield Co., PA; bur Union Cemetery, Luthersburg, PA.
10. **MCGARVEY**, Robert Vincent; b 13 Oct 1883 LaJose, Clearfield Co., PA; m abt 01 Jul 1906; d 15 Apr 1967 LaJose, Clearfield Co., PA; bur Fairview Baptist Church Cemetery, LaJose, PA.
11. **MCMASTERS**, Blanche Belle; b 21 Sep 1884 Tioga Co., PA; m abt 01 Jul 1906; d 11 Sep 1964 LaJose, Clearfield Co., PA; bur Fairview Baptist Cemetery, LaJose, PA.
12. **BARBER**, Frank Eugene; b 24 Nov 1858 Cattaraugus Co., NY; m 02 May 1880 Cattaraugus Co., NY; d 08 Apr 1916 Steamburg, Cattaraugus Co., NY; bur 12 Apr 1916

- Steamburg Cemetery, Steamburg, Cattaraugus Co., NY.
13. **SEEKER**, Lillian Lydia; b 17 Jan 1864 Coldspring, Cattaraugus Co., NY; m 02 May 1880 Cattaraugus Co., NY; d 24 Apr 1949 Salamanca, Cattaraugus Co., NY; bur 27 Apr 1949 Steamburg Cemetery, Steamburg, Cattaraugus Co., NY.
 14. **WITHERIL**, Clair Henry; b 23 Jun 1880 or 1881 Sardinia, Erie Co., NY; m 01 or 03 Nov 1903 or 1904 Franklinville, Cattaraugus Co., NY; d 08 Jun 1932 Buffalo, Erie Co., NY; bur Sardinia Cemetery, Sardinia, Erie Co., NY.
 15. **BULL**, Irma May; b 31 Jan 1884 or 03 Jan 1884 Sardinia or Delevan, Erie Co., NY; m 01 or 03 Nov 1903 or 1904 Franklinville, Cattaraugus Co., NY; d 08 May 1967 Ellicottville, Cattaraugus Co., NY; bur Sardinia Cemetery, Sardinia, Erie Co., NY.
 16. **ZARTMAN/ZORTMAN**, Lorenzo Alexander; b 11 Jun 1858 DuBois, Clearfield Co., PA; m 23 Oct 1887; d 25 Jun 1915 Brady Twp., DuBois, PA; bur Union Cemetery, Luthersburg, PA.
 17. **SHAFFER**, Mary Jane; b 25 Aug 1871 Luthersburg, PA; m1 23 Oct 1887 Lorenzo Alexander **ZARTMAN/ZORTMAN**; m2 Mr. **ILIFF**; d 04 Nov 1947 Warren State Hospital; bur Union Cemetery, Luthersburg, PA.
 18. **KELLER**, Harvey J; b 24 Jun Reynoldsville, PA.
 19. _____, Anna S; b 20 Nov Reynoldsville, PA.
 20. **MCGARVEY**, John J; b 16 Oct 1845 Chest Twp., Clearfield Co., PA; m 16 Sep 1879 Clearfield, Clearfield Co., PA; d 10 May 1927 Chest Twp., Clearfield Co., PA; bur Fairview Baptist Cemetery, LaJose, PA.
 21. **ROBISON**, Martha Ann; b 1850 Chest Twp., Clearfield Co., PA; m 16 Sep 1879 Clearfield, Clearfield Co., PA; d 1939.
 22. **MCMASTERS**, Barzilla Gillidite Vandike Bartholomew; b 03 Aug 1859; d 1937; bur Fairview Baptist Cemetery, LaJose, PA.
 23. **JOHNSON**, Hester C; b 1862; d 1942; bur Fairview Baptist Cemetery, LaJose, PA.
 24. **BARBER**, Solomon; b 16 Sep 1825 So. Kingstown, Washington Co., RI; m 24 Jun 1849 Jamestown, Newport Co., RI; d 14 Oct 1907 Napoli, Cattaraugus Co., NY; bur Napoli, Cattaraugus Co., NY.
 25. **ARMSTRONG**, Dorcas Weaver; b 14 Feb 1825 Jamestown, Newport Co., RI; m 24 Jun 1849 Jamestown, Newport Co., RI; d 25 Jun 1898 Coldspring, Cattaraugus Co., NY; bur 26 June 1898 Napoli, Cattaraugus Co., NY.
 26. **SEEKER**, John Henry; b 25 Oct 1833 Cattaraugus Co., NY; d 07 Aug 1915 Cattaraugus Co., NY.
 27. **CURTIS**, Lydia; b 1844 Cattaraugus Co., NY; d abt 1870 Cattaraugus Co., NY.
 28. **WITHERIL**, Henry Eugene; b 29 May or Jun 1850 or 1851; Sardinia, Erie Co., NY or Arca, NY; m 22 Sep 1871 Willink, Erie Co., NY; d 03 Jun 1929 Erie Co., NY; bur Sardinia Cemetery, Sardinia, Erie Co., NY.
 29. **JOHNSON**, Minerva Delphine; b 05 Oct 1847 Sardinia, Erie Co., NY; m 22 Sep 1871 Willink, Erie Co., NY; d 02 May 1937 Erie Co., NY; bur Sardinia Cemetery, Sardinia, Erie Co., NY.
 30. **BULL**, Elisha; b 16 Mar 1856 Cattaraugus Co., NY; m 01 Nov 1882; d 02 Nov 1932 Cattaraugus Co., NY.
 31. **HUTCHINS**, Ida May Taylor; b 30 Jan 1857 Allegany Co., NY; m 01 Nov 1882; d 16 Jan 1904 Cattaraugus Co., NY.
 32. **ZARTMAN**, Isaac Earl; b 21 Jan 1832 Lebanon Co., PA; m 15 Sep 1853.
 33. **DUNLAP**, Sarah Catharine; b 11 Feb 1836; m 15 Sep 1853.
 34. **SHAFFER**, Samuel Albert; b abt 1845.
 35. **PARKER**, Comfort Lucilla; b abt 1849.
 40. **MCGARVEY**, Anthony; b 15 Sep 1820 Donegal Co., Ireland; m1 1842 Huntingdon, Clearfield Co., PA? Jane **MCGARVEY**; m2 1851 Ellen **HUNTER**; d 31 May 1900 Chest Twp., Clearfield Co., PA; bur 02 Jun 1900 Fruit Hill Church Cemetery, Chest Twp., Clearfield Co., PA.
 41. **MCGARVEY**, Jane; b IRE; m 1842 Huntingdon, Clearfield Co., PA?; d 1849.
 42. **ROBISON**, John.
 43. **CHAMBERLAIN**, Mary Ann.
 44. **MCMASTERS**, Enos Price; b Jun 1824 or 1826; d 08 May 1907 Tioga Co., PA; bur Rabbit Hill Cemetery, LaJose, PA.
 45. **WILLOME**, Elizabeth; b 1830; d 1865.
 48. **BARBER**, Ezekiel; b RI; d bef 1850 RI.
 49. **PALMER**, Content; b 1793 CT; d aft 1870 NY.
 50. **ARMSTRONG**, George.
 56. **WITHERIL**, Henry G; b 02 Feb 1810; d 29 Aug 1850 or 1851 Yorkshire, NY; bur Arcade, NY.
 58. **JOHNSON**, Richard; b 03 Nov 1820 Sardinia, Erie Co., NY; m 11 Apr 1838; d 02 May 1885 Sardinia, Erie Co., NY.
 59. **CURTIS**, Eliza; b 11 Apr 1814; m 11 Apr 1838; d 07 Oct 1890.
 60. **BULL**, Carpenter; b 22 Nov 1804 or 1805; m 22 Nov 1855; d 23 Oct 1870.

61. **BUMP**, Mariah; b 27 Apr 1808; m 22 Nov 1855; d 13 Dec 1881.
62. **HUTCHINS III**, William; b 21 Jan 1832; m 18 Nov 1855; d 07 Jun 1865.
63. **TAYLOR**, Cordelia; b 08 May 1838; m 18 Nov 1856; d 25 May 1858.
64. **ZARTMAN**, Emanuel Jr.; b 26 Jun 1805 or 22 July 1806 Lebanon, Lancaster Co., PA; bapt 29 Sep 1805; d Harrisburg, Dauphin Co., PA.
65. _____, Mary; b Lebanon Co., PA; d Lebanon Co., PA.
66. **DUNLAP**, Alexander; b abt 1810.
67. **HADDEN**, Nancy; b abt 1814.
80. **MCGARVEY**, William; b 1775 IRE; m1 Jennie **LONG**; m2 Mattie **GALLAHER**.
81. **LONG**, Jennie; b IRE; d 1824.
88. **MCMASTERS**, William G; b abt 1794; d 1866 LaJose, PA; bur Rabbit Hill Cemetery, LaJose, PA.
89. **PRICE**, Anna; b abt 1793; d abt 1867.
112. **WITHERIL**, Jared; b abt 1779 CT; d 16 May 1857 Arcade, NY.
116. **JOHNSON**, John; b 1778 Alstead, NH; d 1864 Sardinia, Erie Co., NY.
119. **CHIEVER**, Mary; b 1775; d 10 Jan 1832 Sardinia, Erie Co., NY.
122. **BUMP**, Edward
124. **HUTCHINS II**, William
125. _____, Phebe
126. **TAYLOR**, Justus; b 11 Feb 1794 Grandby, MA; m 08 May 1833; d 13 Dec 1868 Yorkshire, NY.
127. _____, Polly m1 Mr. **WRIGHT**; m2 08 May 1833 Justus **TAYLOR**.
128. **ZARTMAN**, Emanuel; b 01 Jun 1765 Lancaster Co., PA; m 06 Oct 1789 Stouchsburg, PA; d 29 Sep 1826; bur Lutheran Cemetery, Myerstown, PA.
129. **BASSLER**, Elizabeth; b 18 Apr 1767; m 06 Oct 1789 Stouchsburg, PA; d 18 Apr 1820; bur Lutheran Cemetery, Myerstown, PA.
176. **MCMASTERS**, Ebenezer; b abt 1740 VA; d Lycoming Co., PA.
177. **WOLF**, Elizabeth.
248. **HUTCHINS**, William.
252. **TAYLOR**, Silas; b 11 Sep 1768 Grandby, MA; m 01 Apr 1790 South Hadley, MA; d 15 Apr 1852 Rushford, NY.
253. **TOWNE**, Lydia; b 1770; m 01 Apr 1790 South Hadley, MA; d 18 Dec 1833 Rushford, NY.
256. **ZARTMAN**, Alexander II; b 29 Jul 1731 Brickersville, PA; d 02 Dec 1803 Brickersville, PA; bur Emanuel Lutheran Church Cemetery, Brickersville, PA.
257. _____, Magdalena; bur Emanuel Lutheran Church Cemetery, Brickersville, PA.
352. **MCMASTERS**, William; b abt 1700 Europe near the Orient.
504. **TAYLOR**, Jacob; b 10 Jul 1718 Hadley, MA; m1 28 Sep 1751 Elizabeth **LANE**; m2 1764 Mrs. Ruth (**WHITE**) **ROOD**.
505. **WHITE**, Ruth; b 1720; m1 Daniel **ROOD**; m2 1764 Jacob **TAYLOR**.
506. **TOWNE**, Ebenezer; b 22 Sep 1744; d 1778.
507. **WHEELOCK**, Azuba.
512. **ZARTMAN**, Alexander; b abt 1682 GER; d Dec 1762 USA.
513. _____, Ann Catharina; b abt 1696 GER.
1008. **TAYLOR**, Ebenezer; b 01 Mar 1697 Hadley, MA?
1009. **SMITH**, Mehitabel; b 09 May 1696.
1012. **TOWNE**, Elijah; b 16 Feb 1719; m 1743.
1013. **LOCKE**, Lydia; m 1743.
2016. **TAYLOR**, John; b 1639 England; m 12 Dec 1666 Hadley, MA; d 17 Oct 1713; bur Hadley, MA.
2017. **SELDEN**, Mary; m 12 Dec 1666 Hadley, MA; d 07 Jan 1713.
2018. **SMITH**, Samuel.
2024. **TOWNE**, Israel; b 18 Nov 1684.
2025. **HAVEN**, Susannah.
4034. **SELDEN**, Thomas.
4036. **SMITH**, Philip; d 10 Jan 1685.
4048. **TOWNE**, John; b 02 Apr 1658 Topsfield, MA; m 02 Feb 1680.
4049. **SMITH**, Mary; m 02 Feb 1680
4050. **HAVEN**, Moses.
8096. **TOWNE**, Jacob; m 26 Jun 1657
8097. **SIMONDS**, Catherine; m 26 June 1657
16192. **TOWNE**, William; b 1600 England
16193. **BLESSING**, Joanna.

The End



SURNAME FILE

by Delillah Knight

BALL Cornelia Greene see LEWIS, Nathaniel Lester. FIFAREK

BALL Hugh, b 14 January 1878 Black River Falls, WI, s of Amos Moses BALL & Augusta Mira FROST, m Florence Amanda BIESECKER 21 May 1899 (b 20 July 1879 Maples Twp. WI, dau of Ira Sylvester BIESECKER & Amanda Samantha ROSMAN, d 5 June 1945 Vancouver, Clark Co., WA, bur June 1945 Mt. View Cem, LaCenter, WA) Amboy, Clark Co. WA, d 11 May 1970 Camas, Clark Co., WA, bur 13 May 1970 Mt. View Cem, LaCenter, WA. PIONIEK

BALL Mamie Ione see GREENING, Hunter Robb. PIONTEK

BALL Margery, m William PASSMORE. WORTHINGTON

BALL Samuel, m Abigail ____ (d 25 August 1865) d 17 Dec 1865? PIONTEK

BANARD - MA, RI, ENG. GILMAN

BANGEN Hans Hansen 1838-1923, NOR, MN. STOUT

BANGS - Plymouth, MA. HOLROYD

BANTA Ann, b ca 1782 Mercer Co., KY, m George HOLLICROFT 1806 Henry Co., KY, d 17 May 1851 Switzerland Co., IN. KATSCHKE

BARBEAU Joseph, b 1842, m Mary Louise BARBEAUX 1878, 11 CAN, PA, PE, NY, WA., d 1910. BALDWIN

BARBEAUX Joseph, b 1843, m PROUX, Malvina, d aft 1878, 11 CAN, MA, WA. BALDWIN

BARBEAUX Mary Louise, b 1862/1864, m Joseph BARBEAU 1878, 11 CAN, MA, WA, d 1933. BALDWIN

BARBER Clair Griffith, b 6 Mar 1904 Onoville, NY, m Verona May WITHERIL (b 8 Feb 1912 Sardinia, NY, d 22 Sept 1987 Salamanca, NY) 15 Feb 1934, d 21 May 1960 Perrysburg, NY. ZORTMAN

BARBER Edwin, m Loraine HITCHCOCK. ZORTMAN

BARBER Frank, m 2 May 1880 Lillian SEEKER (b 17 Jan 1864 Coldspring, NY, d 26 April 1950. ZORTMAN

BARBER May Arlene see ZORTMAN, Daniel David. ZORTMAN

BARCOLO Margaret, b ca 1700-1710 Kings Co., NY, m John Van DYKE ca 1730 NY or NJ, d bef 1750 NJ. FISHER

BARGERVENSON Inger see AKRE, Peter Bernhart. WOLSKE

- BARKELOO (Van BARKELOO) Margaret, b ca 1700-1710 NY, m ca 1730 John Van DYKE, NY or NJ, d bef 1750, NJ. FISHER
- BARKKINEN Britta see LUOKKANEN, Andrew. WOLSKE
- BARLOW (BAILLOU) Abigail, m John DUNHAM, HOL, MA, d 1669; Thomas, ENG, HOL. GILMAN
- BARLOW Mary see ALLEN, Francis. FISHER
- BARMORE Sara Louisa see PAYNE, D. Montgomery. JONES
- BARNARD Francis, b 1718, m Elizabeth MACY 1741, d 1800; Francis 2nd, b 1747, m Catherine OSBORN 1769, d 1805; Reuben, b 1786, m Jane ____ ca 1808, d 1865; Jesse Franklin, b 1810, m Elizabeth HAYES 1833?, d 188_. BARNARD
- BARNARD Mary see WILLIAMS, Roger. FISHER
- BARNARD Mary 1609-1676, ENG, MA, RI, m Roger WILLIAMS; Richard (Rev) b 1560 ENG. GILMAN
- BARNARD (Salisbury, Amesbury, Nantucket MA) Mary (1667-1737, m John FOLGER; Mary (Martha?) d 1718, m Nathaniel BARNARD; Nathaniel (1643-1718) m Mary BARNARD; Robert, d 1682, m Joanna HARVEY; Thomas (ca 1612- ca 1677) Salisbury, Amesbury. KUECHMANN
- BARNARD Samuel L., b 1835 IN, m Mary Melissa MARSHALL, IN, d 1890, IN; Samuel Melvin, b 1882, IN, m Bertha Lee HOARD 1907 KY, d 1969 WA. BARNARD
- BARNARD Thomas, b 1612, m Eleanor ____ 1640?, d 1667; Robert, m Joanna HARVEY, d 1682; Nathaniel, b 1642, m Mary BARNARD 1662, d 1718; Mary, b 1648, m Nathaniel BARNARD 1662, d 1718; Benjamin, b 1681, m Judith GARDNER 1711, d 1729. BARNARD
- BARNES 1833 - 1860, AL. WINSTON
- BARNES Deborah, b abt 1656 Southampton, NY, m Samuel DAVIS. MALONEY
- BARNES Joshua, b 1616 ENG, m Prudence, ENG, d 1690, ENG. MALONEY
- BARNES Thomas, m Mary LEEK New Haven, CT; Lydia, b 1716 New Haven, CT, m Ebenezer PARKER 1735 Wallingford, CT. OMAN
- BARNEY Sarah (1829-1905) m Alanson SWAIN 1852; Nathaniel (1792-1869) m Eliza STARBUCK 1820; Jonathan (1756-1811) m Abial COFFIN 1781; Benjamin (1699-1783) m Lydia STARBUCK 1722 - all Nantucket, MA. KUECHMANN
- BARNEY (Rehoboth & Salem, MA, Newport, RI) Jonathan (1677-1706, m Sarah GRIFFIN; Jacob, Jr. (?-1693), m/2 Anne WITT 1660; Jacob, Sr. (1601-1673, m Elizabeth CATES-BY. KUECHMANN
- BARNHART Sarah see CRAVEN, Francis Marion. CRAVENS
- BARONE Maria see LO COCO, Vincenzo. KAPRANOS
- BARR - PA. BAKER

- BARRON Benjamin Franklin, b 19 Jul 1825 Licking River, KY, m Jane Christine An LIN-
SEY 15 Jul 184? Vermont Fulton, IL, d 8 Nov 1893 Astoria Fulton, IL. KATSCHKE
- BARRON John, Sr., b ca 177? Charles Co., MD, m Susan MATTINGLY ca 179? KATSCHKE
- BARRON John M., Jr., b 23 Sep 1802 VA, m Sarah (Sally) TWEDELL (?) 18 Sep 1820 Eliza-
bethtown, KY, d 11 Apr 1880 Astoria Fulton, IL. KATSCHKE
- BARRON Margaret, b ENG, m John WARREN 1615 Nayland, Co. Suffolk, ENG, d 6 Nov 1662
Watertown, MA. FISHER
- BARRON Mary Elizabeth, b 6 Mar 1859 Vermont Fulton, IL, m Levi Lincoln AYERS 29 May
1883, d 20 Sep 1903 Choctaw, OK Terr. KATSCHKE
- BARUS - GA on & bef Apr 1865, b, m, d unk, m a HAMILTON, mo of Jessie James HAMILTON,
Mike HAMILTON, Pallia HAMILTON, Mattie HAMILTON. WILLIAMS
- BARRON Mary Elizabeth - see AYERS, Levi Lincoln. KATSCHKE
- BARSTOW Elizabeth, Scituate, MA, m Wm. RANDALL; Matthew, Yorkshire, ENG. KUECHMANN
- BARTA Franklin Joseph, b 10 Feb 1917 Concrete, Skagit Co., WA, s of Joseph Frank &
Emma (JES) BARTA, m Virginia BAGNELL (b 9 Apr 1920 Republic, Ferry Co., WA, dau
of Charles Mc QUEEN & Elma Grace (SOULEN) BAGNELL) 19 May 1942 Coeur d'Alene,
Kootenai Co., ID, chil Diane Virginia, b 19 Nov 1943, m Richard Charles CARSTENS
1 Oct 1965 (b 21 Oct 1942) dau Jennifer Lee, b 14 May 1967, dau Andrea Frances
b 7 Apr 1971; David Franklin, b 18 Jun 1953, m Colleen Patricia HALL 22 Jan 1983
(b 6 Jul 1958) dau Madeline Josephine, b 12 Oct 1986, dau Leah Kathleen, b 18 Jun
1991. BARTA
- BARTA Joseph/ Josef, d Bohemia, AUS now CZ, m Frances ZAHRADNIK (Frantiska ZAHRADNI-
KOVA) d Bohemia, AUS nor CZ, chil Joseph Frank, b 16 Jan 1879, m Emma JES/JESS
25 Mar 1911, d 22 Oct 1953; Frances Marie, b 9 Mar 1889, m Joseph Edward NOVAK 13
Apr 1907, d 8 Sep 1947; Agnes, b 3 Mar 1894, m Ludwig J. KADIDLO/KADELLO, d 18
Jun 1945; Justina BARTOVA, m DURBABA (b 1883, d 1955); Lidka BARTOVA, b 1900, m
Josef EHCA (b 1899, d 1955); Kristina BARTOVA, m Frantisek MACHAC; Marie BARTOVA,
m PLUHAR; 2 other chil. BARTA
- BARTA Joseph Frank, b 16 Jan 1879 Javornice, Rychnev, Bohemia, AUS (CZ), s of Joseph
& Frances (ZAHRADNIK), m 25 Mar 1911 Emma JES/JESS (b 1 Apr 1885 Sec 35 Liberty
Twp, Fillmore Co., NE, dau of John & Mary (KRAL) JES/JESS, d 11 Aug 1967 Everett,
Snohomish Co., WA, bur Union Cem, Sedro Woolley, Skagit Co., WA) Seattle, King Co.
WA, d 22 Oct 1953 Seattle, King Co., WA, bur Union Cem, Sedro Woolley, Skagit Co.
WA, chil Leona Emma, b 4 Dec 1911, m Harold Karl BOLLE 29 Oct 1938; Josephine
Olive, b 30 Jun 1913, m Roger F. ELLIOTT 1942; Franklin Joseph, b 10 Feb 1917, m
Virginia Bagnell JUNGLOM 19 May 1942; Howard Jess, b 3 Nov 1918, m Arnetta THOMAS
25 May 1946; Raymond Joseph, b 7 Feb 1920, m Florence AUGUSTINE 20 Aug 1949, d
29 Oct 1976. BARTA
- BARTLETT Rebecca 1833-1859 MO, IL, m Welcome SCOTT. FINLEY
- BARTLETT Deborah 1646-1711, CT, m John COWLES; Robert 1603-1676, ENG, CT, m Ann
TAVINGTON; John, ENG. GILMAN
- BARTOLETT Catherine, b ca 1812 MD or PA, m ca 1833, PA, Samuel ARMSTRONG, d ca 1880?
SMITH

BARTON Joan, ENG, m Richard SMITH. GILMAN

BASSAGE Mary Jane (Jennie), b 14 Jul 1849, m Luther SISSON 14 Jan 1866, d 8 Mar 1915. ARMSTRONG

BASSAGE John, m Mary COOKE 1848? ARMSTRONG

BASSETT - MA. HOLROYD

BASSETT William, b 1623 on ship "Fortune"; William; Hannah (1650-1726) New Haven & Wallingford, CT. OMAN

BASSETT Col. William of VA; Elizabeth, b 1730, VA. OMAN

BATCHELDER (BACHILOR) - MA (Boston 1632), NH (Hampton), MA (Saco). HOLROYD

BATCHELLOR Benjamin, b 19 Sep 1673 Hampton, NH, m Susannah PAGE 25 Dec 1696, d 12 Jan 1718 Hampton Falls, NH. MALONEY

BATE Ann, b ENG, m Stephen BACHILER bef 1590, d ENG. MALONEY

BATES Thankful, b abt 1757 - 1760, Exeter, RI, bros Roger and Moses, m John GILL, chil Daniel, Mary, John, Sarah, Polly and Bates. CROSWELL

BATES - Stamford, CT 1675. FINLEY

ADDRESSES OF SUBMITTERS

ARMSTRONG William S. 9811 NE 91st Avenue, Vancouver, Washington 98662-1935
 BAKER Barbie 10405 NW Fifteenth Avenue, Vancouver, Washington 98685-5177
 BALDWIN Carole Barbeau 1101 W 39th Street, Vancouver, Washington 98660-1430
 BARNARD Mary E. 5565 E Evergreen Boulevard, #3406, Vancouver, Washington 98661-6672
 BARTA Franklin J. 3917 Edgewood Drive, Vancouver, Washington 98661-5409
 CRAVENS Maureena M. 3905 Oregon Drive, Vancouver, Washington 98661-5836
 CROSWELL Lorraine 5909 "W" Street, Washougal, Washington 98671
 FIFAREK Mrs. M. B. 3016 NE 62nd Avenue, Vancouver, Washington 98661
 FINLEY Mrs. Mildred 8205 NE 9th Street, Vancouver, Washington 98664-2035
 FISHER Robert 714 W 43rd Street, Vancouver, Washington 98660
 GILMAN Gerry 3777 Addy Street #39, Washougal, Washington 98671-2768
 HOLROYD Jean G. 1111 NW 49th Street, Vancouver, Washington 98663-1751
 JONES Barbara J. 770 Juntura Street SE, Salem, Oregon 97302-3565
 KAPRANOS Rose C. 2026 NW Sierra Lane, Camas, Washington 98607-2534
 KATSCHKE Mary L. 14413 NE 185th Street, Battle Ground, Washington 98604-9254
 KUECHMANN Gene 8113 NE 25th Avenue, Vancouver, Washington 98665-9726
 MALONEY Evelyn W. Cascade Inn #246, 11613 SE 7th Street, Vancouver, Washington 98684
 OMAN Kitty R. 9701 NE Pierce Drive, Vancouver, Washington 98662-6563
 PIONTEK Mildred 967 15th Street, Washougal, Washington 98671-1209
 SMITH Pat 10612 NE 232nd Street, Battle Ground, Washington 98604-9414
 STOUT Nancy K. 16313 NE Caples Road, Brush Prairie, Washington 98606-9505
 WINSTON Peggy 901 E. 34th Street, Vancouver, Washington 98663-2308
 WOLSKE Joyce Post Office Box 3937, Vancouver, Washington 98662-8937
 WORTHINGTON Judy 7306 NE 31st Avenue, Vancouver, Washington 98665-0611
 ZORTMAN Jeannie M. 6617 NE 137th Street, Vancouver, Washington 98686-2931

NEW MEMBERS

B-107 Burlingame, Virginia L. 695-3979
715 N.W. 76th St.
Vancouver, WA 98665

B-108 Bruesch, Grant T. & Esther 737-2586
3100 Falk Rd. R 107
Vancouver, WA 98661

C-069 Cox, Dennis & Verdie 693-2438
5229 NW Esther
Vancouver, WA 98663

C-070 Crockett, Ruth
3700 T
Vancouver, WA 98663

E-018 Erickson, Laurel 835-3089
3603 Evergreen Way
Washougal, WA 98671-3089

H-079 Hickman, Susan G. 247-5001
30518 N.E. Healy Rd.
Amboy, WA 98601

H-080 Heikkinen, Leslie & Ann 695-2739
4002 N.E. 41st St.
Vancouver, WA 98661-3506

K-055 Knapp, David & Joyce 887-4201
8002 NE Hwy 99 #78
Vancouver, WA 98665

K-056 Kellum, Kris (509)427-4347
Box 908
Stevenson, WA 98648

M-095 Metke, Lorlei K. 896-2655
1607 S.E. 121 Ave.
Vancouver, WA 98684

M-096 Miller, Bonnie J. 892-9507
600 SE 101st Ave.
Vancouver, WA 98664

R-069 Roberts, Mike 695-9915
1106 NE 72nd St. #3
Vancouver, WA 98665

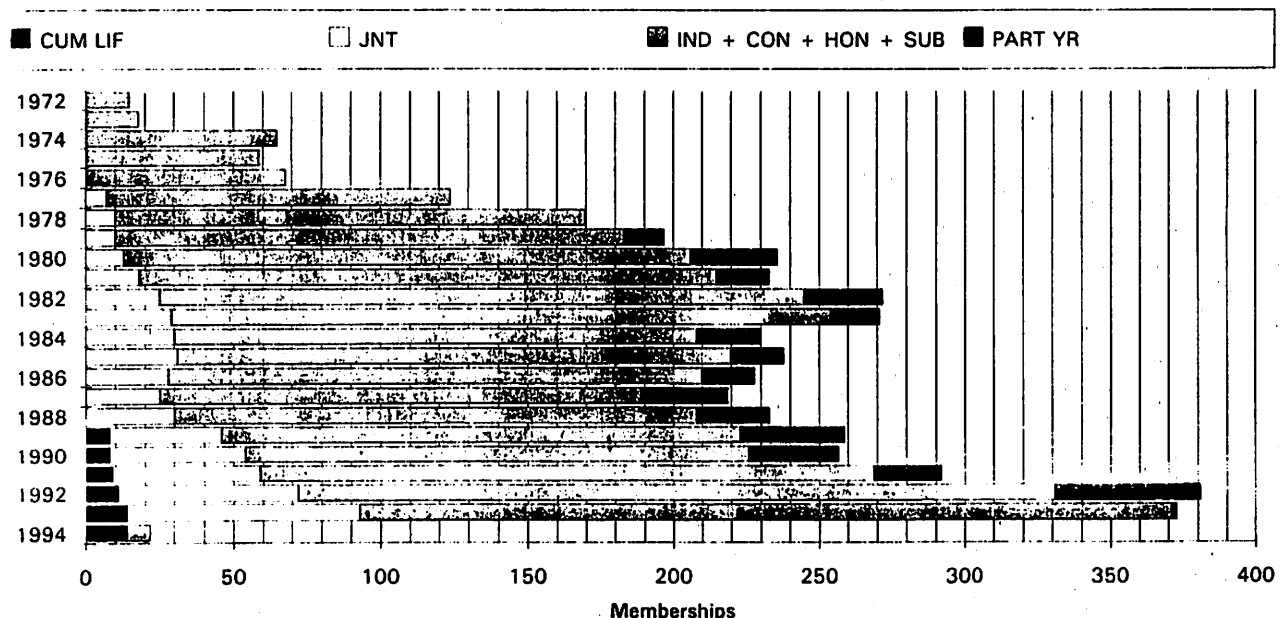
S-100 Stephens, Sydney H. 837-3398
MP 105 Hobbitt Hill Rd.
Washougal, WA 98671-9486

Y-006 Yramategui, Emily 944-7604
17022 S.E. 31st St.
Camas, WA 98607

RENEWAL:

Li-1 Fort Vancouver Regional Library
1007 E. Mill Plain Blvd.
Vancouver, WA 98663

CCGS MEMBERSHIP PROGRESS as of 30 DEC 1993



Memberships Chart created by Mary Katschke. CUM LIF = Cumulative Life Members; JNT = Joint Memberships; IND = Individual Members; CON = Contributing Members; HON = Honorary Members; SUB = Subscribing Members (such as libraries); PART YR = (New) Part Year Memberships

QUERIES

Barbie Baker, editor

Queries are read by researchers in all regions of the United States and parts of Canada. The *Trail Breakers* is sent to research libraries and genealogical societies throughout the country. Queries are free to all genealogists. Send your query to Barbie Baker, Queries Editor, Clark County Genealogical Society, P.O. Box 2728, Vancouver, WA 98668.

WORLEY
KNIGHT
HOBERG

The First Presbyterian Church of Vancouver, WA has a Family Bible that was given to them after the death of member Doris M. Worley who died 18 March 1986. The records contains in this Bible are featured in the Bible Records Section in this issue. A descendent can have this Bible for the cost of postage. Please your show relationship to the KNIGHT/HOBERG family.
Barbie Baker, 10405 NW 15th Ave., Vancouver, WA 98685

CLOCK
CORNELIUS
COTTON

Would like information on James CLOCK family. James CLOCK b ca 1815 NY m Catherine CORNELIUS d/o Absolom CORNELIUS & Elizabeth COTTON. Catherine b ca 1820 NY or NC and d 21 Nov 1859 Marion Co., OR. James CLOCK move to OR 1845, d Feb 1850 L inn Co.,OR. Caused of death ? Where bur, fa, mo, children?? Postage promptly refunded.
Richard N. Grafton, 401 NW 85th St., Vancouver, WA 98665-7727

CHAMNESS

Isreal CHAMNESS b 1810 Chatham Co., NC; d 11 Aug 1860 Marion Co., OR from tuberculosis. Bur? Who was 1st wife? Came to OR with family, 1845, from St. Joseph, MO. Children: of 1st m: Elizabeth, Joseph & Harrit/Harriet CHAMNESS. Any info appreciated. Postage promptly refunded.
Richard N. Grafton, 401 NW 85th St., Vancouver, WA 98665-7727

CORNELIUS
SCOTT
RINEARSON

Rebecca J. CORNELIUS d/o Absolom CORNELIUS on way to OR, 1845, m John SOTT on the South Pass, WY. Who performed m? John SCOTT d winter of 1845 or spring of 1846. Where, when, cause & where bur? Rebecca m 2nd Perer M. RINEARSON, (DLC #100 Clackamas Co., OR), 18 May 1847. Peter d 12 Nov 1889. Where, cause, where bur? Any info appreciated. Postage promptly refunded.
Richard N. Grafton, 401 NW 85th St., Vancouver, WA 98665-7727

McCLANAHAN
CALAHILL

Alta McCLANAHAN, d/o Jesse CALAHILL & Leutesia "Lute" McCLANAHAN, known to reside with parents & siblings in Vancouver WA, 1891/92; prob. 15/16 yrs old. She was employed at a local newspaper as a printer. Mother, Lutetsia d 15 Oct 1894, Vancouver, self administered rat poison. No further word or records has ever been found relating to Alta McCLANAHAN. Any info appreciated. Postage promptly refunded.
Richard N. Grafton, 401 NW 85th St., Vancouver, WA 98665-7727

Washington State Genealogical Society Annual Conference

April 28 - May 1, 1994



Exploring New Frontiers

Featuring

*Henry Z. Jones, Jr.
& Judith E. Svoboda*

Hosted by

*Clark County Genealogical Society
P.O. Box 2728,
Vancouver, Washington 98668*

- ★ Henry Z. Jones, Jr. ~ noted lecturer and author, Fellow of the American Society of Genealogists
- ★ Judith E. Svoboda ~ genealogical teacher and seminar instructor for over ten years
- ★ Lecture Series ~ 16 classes to choose from ~ new frontiers in research strategy, designed for your varying needs
- ★ Vendors ~ offering a wide variety of publications, research aids and services
- ★ Accommodations ~ hotel rooms, restaurants, and events all at one beautiful location, Red Lion Inn at the Quay, Vancouver, Washington

Mark your calendars now for this very special event!

Conference Program and Registration Brochure will be mailed in February.

INDEX

-A-

ABEL, 17
 ABRAHAMSON, 20
 ADAMSON, 29
 AKRE, 34
 ALGAR, 20
 ALLEN, 35
 ALLRED, 28
 ALSTEEN, 21
 AMES, 18
 ARMSTRONG, 17, 18
 20,21,32,36,37
 ARMSWORTHY, 19
 ARNOLD, 19
 AUGUSTINE, 36
 AUSTIN, 28
 AYERS, 36
 AYERS, 36

-B-

BACHILER, 37
 BACHILOR, 37
 BAGNELL, 36
 BAILEY, 29
 BAILEY, 13
 BAILLOU, 35
 BAKER, 18, 35, 37, 39
 BALDWIN, 34, 37
 BALL, 19, 30, 34
 BALLARD, 30
 BANARD, 34
 BANGEN, 34
 BANGS, 34
 BANTA, 34
 BARBEAU, 34
 BARBER, 31, 32,34,39
 BARCOLO, 34
 BARGERVENSON, 34
 BARKELOO, 35
 BARKKINEN, 35
 BARLOW, 35
 BARMORE, 35
 BARNARD, 35, 37
 BARNES, 16, 35
 BARNETTE, 31
 BARNEY, 35
 BARNHART, 18, 35
 BARONE, 31, 35
 BARR, 30, 35
 BARRON, 36
 BARSTOW, 36
 BARTA, 36, 37

BARTLETT, 36
 BARTOLETT, 36
 BARTON, 37
 BARTOVA, 36
 BASKERVILLE, 16, 17,
 18, 21
 BASSAGE, 37
 BASSETT, 37
 BASSLER, 33
 BATCHELDER, 37
 BATCHELLOR, 37
 BATE, 37
 BATES, 28, 29, 37
 BATTAGLIA, 30, 31
 BATTERSBY, 24
 BAUER, 8, 14, 22
 BECK, 10
 BEELAR, 29
 BEELER, 28, 29
 BELL, 18
 BELLANGER, 26
 BENJAMIN, 31
 BENSON, 17
 BENT, 12
 BIESECKER, 34
 BIHAN, 24
 BILL, 25
 BIRD, 17
 BISHOP, 12
 BLAIR, 16, 18
 BLAKER, 8
 BLAND, 30
 BLESSING, 33
 BLUROCK, 8
 BOCKETTE, 18
 BOHAN, 20
 BOLLE, 36
 BOOTH, 29
 BOOTS, 19
 BORTNIAK, 12
 BORWN, 24
 BOSTWICK, 19
 BOUREAU, 21
 BOUTELLE, 25
 BOWMAN, 15
 BRACKETT, 25
 BRADLEY, 24
 BRANT, 24
 BRELSFORD, 13
 BROCK, 29
 BROOKS, 19
 BROTHERS, 29

BROWN, 8, 17, 26, 27
 BROWNING, 29
 BROYLES, 13
 BRUESCH, 37
 BUCHANAN, 12
 BULL, 29, 32
 BUMP, 33
 BURLINGAME, 37
 BURT, 28
 BURTEN, 19, 24
 BUTLER, 24
 BUTRAM, 30
 BYRAM, 16, 18, 19

-C-

CALAHILL, 39
 CAPMAN, 19
 CAPODICE, 30
 CAPODICI, 30
 CAPON, 23
 CAPPS, 29
 CARRAHER, 21
 CARSTENS, 36
 CASS, 16
 CASSANDER, 28
 CATESBY, 35
 CHAMBERLAIN, 32
 CHAMNESS, 39
 CHARLTON, 30
 CHASE, 25, 28
 CHIEVER, 33
 CHURCH, 30
 CLAMPITT, 21
 CLAPP, 29
 CLARK, 21, 26
 CLEMENT, 21
 CLINE, 13, 19
 CLOCK, 39
 CODY, 18
 COFFEE, 26
 CONNER, 28
 COOK, 20, 31
 COOKE, 37
 COOMBS, 14
 COOPER, 13, 30
 CORNELIUS, 39
 COTTON, 39
 COWLES, 36
 COX, 37
 CRAIG, 24
 CRAVELLA, 31
 CRAVEN, 35

CRAVENS, 35, 37
 CROCKETT, 30, 37
 CROOK, 6
 CROSBY, 29
 CROSWELL, 37
 CUFFEL, 15
 CURTIN, 24
 CURTIS, 32
 CUSTER, 6
 CUTTON, 20

-D-

D'ATTILO, 31
 DALQUIST, 13
 DAMPHOFFER, 24
 DANIELS, 29, 30
 DARST, 13
 DATTILO, 30
 DAVIC, 18
 DAVIDSON, 24
 DAVIS, 14, 35
 DEAKO, 19
 DECK, 17, 21
 DEMPSEY, 9
 DODSON, 30
 DOUGLAS, 17, 21
 DOWGILL, 13
 DOWNING, 23
 DREYFUSS, 19
 DUGIN, 24
 DUNAGAN, 28
 DUNHAM, 35
 DUNLAP, 32, 33
 DUPUIS, 26
 DURBVABA, 36
 DURST, 13
 DYER, 29

-E-

EDDLEMON, 13, 14
 EDWARDS, 18
 EHCA, 36
 ELLIOTT, 36
 ELY, 29
 EMM, 29
 ENGESET, 20
 ENSMINGER, 29
 ERICKSON, 37
 ERION, 18

-F-

FAIR, 18

FAN, 21
 FARMER, 13
 FERGUSON, 18
 FIELD, 24
 FIELDS, 19
 FIFAREK, 34, 37
 FINGLE, 19
 FINLEY, 36, 37
 FISHER, 34-37
 FLANDERS, 23
 FOLGER, 35
 FORBES, 11, 28
 FOWLER, 30
 FOX, 12, 22
 FREUNAN, 3
 FREY, 15
 FRY, 29

-G-

GALEHOUSE, 18
 GALLAHER, 33
 GARDNER, 35
 GARRETT, 16, 20
 GARROW, 21
 GASTON, 17
 GERBER, 8
 GETZENDANNER, 13
 GILL, 37
 GILLIANBACK, 20
 GILMAN, 4, 16, 34, 35, 36,
 37
 GINTY, 24
 GLADDEN, 12, 13, 15
 GLANDYS, 26
 GOLLIDAY, 21
 GRAFTON, 39
 GRAZIANO, 31
 GREEN, 15, 18, 19
 GREENING, 34
 GREGERSON, 17
 GRIFFIN, 35
 GRIFFITH, 12, 18
 GRIFFITHS, 16
 GROVES, 4
 GUARDALABENE, 30, 31

-H-

HAACK, 24
 HAAK, 22
 HADDEN, 33
 HAGENBURGER, 24
 HAGERMAN, 30
 HAGNES, 20
 HAINES, 21
 HALL, 19, 36
 HAMILTON, 16, 28, 29, 36
 HANKS, 31

HANRAHAN, 12
 HANSEN, 17, 29
 HARLAN, 21
 HARRIS, 12, 14
 HARSHMAN, 12
 HARTWELL, 27
 HARVEY, 35
 HATHAWAY, 26
 HAVEN, 33
 HAYDEN, 26
 HAYES, 35
 HAYNES, 21
 HEATHCOTE, 12
 HEIKKINEN, 37
 HESLEY, 18
 HICKMAN, 37
 HILLYARD, 29
 HINES, 24, 26, 27
 HITCHCOCK, 34
 HOARD, 35
 HOBERG, 2, 39
 HOBERY, 3
 HODGES, 23, 26
 HOGAN, 19
 HOGGATT, 12
 HOLLCROFT, 34
 HOLROYD, 34, 37
 HOOPER, 15
 HOPKINS, 19
 HUDDLESTON, 30
 HUESSER, 13, 14
 HUGHES, 16
 HUNTER, 20, 32
 HUTCHINS, 32, 33

-I-

ILIFF, 32
 ISOM, 28

-J-

JENDRO, 13
 JENNINGS, 29
 JERMANN, 21
 JES, 36
 JESS, 36
 JOHNES, 16
 JOHNS, 30
 JOHNSON, 20, 21, 28, 32,
 33
 JOHNSTON, 20
 JOHNSTON, 21
 JONE, 19
 JONES, 16, 18, 20, 21, 28,
 29, 35, 37, 39
 JORDAN, 14
 JOUNGER, 26
 JUNGLOM, 36

-K-

KADELLO, 36
 KADIDLO, 36
 KADOW, 16
 KALLAS, 13
 KALLEN, 29
 KAPRANOS, 30, 35, 37
 KATSCHKE, 34, 36, 37
 KELLER, 31, 32
 KELLUM, 37
 KENNISH, 19
 KINNEY, 16
 KISTLER, 24
 KITTLE, 16
 KNAPP, 16, 17, 19, 21, 26,
 37
 KNATZER, 30
 KNIGHT, 2, 39
 KRAMER, 20
 KUECHMANN, 35, 36, 37
 KUNTZ, 16

-L-

LAIRD, 19
 LANCASTER, 26
 LANDRUM, 4, 5
 LANE, 29, 33
 LARSON, 21
 LAUGHLIN, 19
 LaVIOLETTE, 17, 19
 LAY, 29
 LEACH, 28
 LEAHY, 24
 LEEK, 35
 LEISER, 19, 20
 LEWIS, 14, 17
 LEWIS, 17
 LINSEY, 36
 LOCKE, 33
 LOCKWOOD, 22
 LOCOCO, 31
 LoCOCO, 35
 LONG, 33
 LOOMIS, 17
 LUOKKANEN, 35
 LYNCH, 24

-M-

MACHAC, 36
 MacMAKIN, 17
 MACY, 35
 MADDOCK, 16
 MAHAN, 13
 MAHON, 19
 MALO, 17
 MALONEY, 35, 37
 MANGANELLO, 31

MANS, 22
 MANSFIELD, 27
 MARBLE, 29
 MARSH, 16
 MARSHALL, 35
 MARTIN, 19
 MASSICOTTE, 12
 MATSON, 20
 MATTA, 13
 MATTINGLY, 36
 MAULSBY, 24, 26
 MAXON, 26
 McANDREW, 26
 McCAFFERTYS, 15
 McCLANAHAN, 39
 McCLELLAN, 15
 MCCOY, 28
 McCRAY, 16, 17
 MCCULLOUGH, 30
 MCGARVEY, 31, 32, 33
 McIRVIN, 17
 McKEE, 8
 McLANE, 13
 MCLAURIN, 28
 McMAHAN, 18
 MCMASTERS, 31, 32, 33
 McNEIL, 12
 MERRIFIELD, 20
 MESPLAY, 12, 13, 14
 METKE, 37
 MIDDLETON, 24
 MILLER, 17, 29, 37
 MINESTER, 3
 MINZES, 30
 MITCHELL, 19
 MONSON, 17
 MOOR, 31
 MOORE, 13
 MORGAN, 18
 MORRIS, 18
 MURPHY, 24
 MYRES, 23

-N-

NEEDHAM, 29
 NELSON, 3
 NICHOLS, 25
 NICHOLSON, 24
 NICKEL, 12
 NIELSEN, 17
 NOVAK, 36

-O-

O'CONNOR, 24
 O'KEANE, 25
 O'LEARY, 19
 OMAN, 13, 35, 37

OPPENHEIMER, 31
 ORR, 23
 OSBORN, 35

-P-

PADDEN, 24
 PALMER, 26, 32
 PARKER, 32
 PARTHENAY, 21
 PASSMORE, 34
 PATTEE, 15
 PAUL, 23
 PAYNE, 29, 35
 PECK, 16
 PELOUBET, 31
 PENTILLA, 20
 PERDUE, 18
 PETERSON, 21, 28
 PETREE, 29
 PINNICK, 17
 PIONIEK, 34, 37
 PITNER, 23
 PLUHAR, 36
 PLUID, 18
 POMPE, 16
 PORTER, 28
 POTTER, 24
 POWELL, 15
 PRATER, 30
 PRENTICE, 29
 PRENTIS, 28, 29
 PRICE, 33
 PRINCE, 14
 PROEBSTEL, 25
 PROUX, 34

-Q-

QUATTROCCHI, 31

-R-

RAMBO, 17
 RANDALL, 36
 RASCHER, 23
 RAY, 15
 REED, 10, 17
 REEDER, 16
 REEVES, 21
 REID, 10
 REVELLE, 3
 RHODES, 19
 RICHARDS, 13
 RIGGS, 22
 RINEARSON, 39
 ROBERTS, 37
 ROBISON, 32
 RODDICK, 15
 RODDIE, 23

ROOD, 31, 33
 ROSENBERRY, 14
 ROSMAN, 34
 ROSSMAN, 16
 RUMMEL, 3
 RYSKAMP, 14

-S-

SARTORS, 29, 30
 SCHUHART, 28
 SCHUTTE, 28
 SCHWARTZENBURG, 25
 SCOLARO, 31
 SCOTT, 36, 39
 SEEKER, 32
 SELDEN, 33
 SETH, 14
 SHAFFER, 32
 SHARP, 20
 SHAVER, 13
 SHELDON, 20
 SHERMAN, 4
 SHOREY, 19
 SILLY, 26
 SIMONDS, 33
 SIMS, 21
 SIVERTSON, 17
 SLABIC, 15
 SLOTE, 14
 SLOTHOWER, 19
 SMART, 30
 SMITH, 14, 17, 19, 26, 27,
 29, 33, 36, 37

SNOVER, 18
 SOULEN, 36
 SOUMI, 17
 SPALDING, 31
 SPARKS, 20
 SPAULDING, 23
 SPEERS, 30
 SPENCER, 26
 SPRECHT, 21
 SPRECKER, 18
 SPRINGER, 18
 SPURGEON, 20
 St. JOHN, 12
 STARBUCK, 35
 STECKLE, 16
 STEINMETZ, 17
 STEPHENS, 37
 STEVENSON, 17, 19, 20,
 21

STEVENSON, 21, 25
 STIERNA, 13
 STILES, 26
 STOTENBUR, 18
 STOUT, 34, 37

STRONG, 16
 STURGIS, 31
 SUGG, 18
 SUISTE, 24, 26
 SUMMERS, 30
 SUMNER, 29
 SUTHERLAND, 18
 SUTTON, 16
 SVOBODA, 39
 SWAIN, 35

-T-

TAFT, 31
 TAMISSIE, 16
 TAVINGTON, 36
 TAYLOR, 18, 19, 20, 29,
 33
 TEACLE, 28
 TEALE, 21
 TECAL, 28
 THOMAS, 36
 THOMPSON, 20, 21
 TIMMONS, 26
 TOLTON, 13
 TOWNE, 33
 TRACY, 28, 29
 TREVITT, 22
 TROUP, 23, 25
 TURK, 19
 TURKEY LEG, 6
 TURNER, 30
 TWEDELL, 36

-U-

UNKNOWN, 17

-V-

VanBARKELOO, 35
 VanBUSKIRK, 19
 VanderMATE, 19
 VanDYKE, 34, 35
 VanVLEET, 25, 26

-W-

WALKER, 15
 WALL, 29
 WALLET, 17
 WALTHERS, 27
 WARD, 20
 WARREN, 31, 36
 WEBBER, 27
 WEDGE, 13
 WEDNER, 16
 WELDON, 18
 WELLWOOD, 31
 WENSLEY, 19
 WHEELER, 19

WHEELOCK, 33
 WHITE, 29, 33
 WILDER, 15
 WILKES, 24
 WILLIAMS, 4, 27, 35, 36
 WILLOME, 32
 WILSON, 19, 29, 30
 WINSTON, 35, 37
 WINTLER, 22, 24, 27
 WISE, 27
 WISWALL, 16, 18, 19, 20
 WITHERIL, 31, 32, 33, 34
 WODTKE, 29
 WOLF, 33
 WOLFENBARGER, 28, 29
 WOLFENSBERGER, 29
 WOLSKE, 34, 35, 37
 WOOD, 17, 24, 25
 WOODHAM, 10
 WOOLEY, 14
 WORDEN, 12
 WORLEY, 39
 WORTHINGTON, 34, 37
 WRIGHT, 22, 28, 33

-Y-

YATES, 20
 YODER, 29
 YOLSON, 21
 YOUNG, 18
 YRAMATEGUI, 37

-Z-

ZAHRADNIK, 36
 ZAHRADNIKOVA, 36
 ZARTMAN, 32, 33
 ZENZ, 20
 ZORTMAN, 31, 32, 34, 37

Clark County Genealogical Society Publications ~ Fall 1993

Clark County Pioneers ~ A Centennial Salute, Biographical sketches of the pioneers that settled Clark County prior to statehood in 1879. Many photographs, completely indexed. Compiled by Rose Marie Harshman
765 pages, hard bound, members \$40.50, non-members \$45.00, plus \$3.00 postage & handling.

Clark County Pioneers ~ Through the Turn of the Century, Biographical sketches of the pioneers that settled Clark County and their descendants. A wealth of information for Clark County researchers and a treasured heirloom for family members. Many photographs, and completely indexed. Compiled by Rose Marie Harshman.
911 pages, hard bound, limited edition, members \$49.50, non-members \$55.00, plus \$3.00 postage & handling.

Clark County, Washington Census of 1850 & 1860, Vol. 1. Complete information on all members of household. Compiled by Mildred Porter.
68 pages, members \$6.75, non-members \$7.50

1870 Census of Clark, Chehalis, Cowlitz, Jefferson & Island Counties, Washington, Vol. 2. Complete information on all members of household. Compiled by Mildred E. Porter
150 pages, members \$13.50, non-members \$15.00

Clark County Washington Census of 1880, Vol. 3. Complete information on all members of household. Compiled by Ralph and Betty Korff.
121 pages, members \$13.50, non-members \$15.00

Clark County Washington 1900 Census, Vol. 4. Complete information on all members of household. Compiled by Rex A. Harrison
234 pages, members \$18.00, non-members \$20.00

Clark County Washington Marriages, Vol. 1, Earliest available marriages through 1896. Many Oregon residents married here.
244 pages, members \$13.50, non-members \$15.00

Clark County Washington Marriages, Vol. 2, 1897 through 1904, gives complete information from marriage applications
290 pages, members \$13.50, non-members \$15.00

Clark County Washington Marriages, Vol. 3, 1905 through 1909, gives complete information from marriage applications
299 pages, members \$13.50, non-members \$15.00

Clark County Washington Marriages, Vol. 4, 1910 through 1913, gives complete information from marriage applications.
400 pages, members \$15.75, non-members \$17.50

Clark County Washington Marriages, Vol. 5, 1914 through 1915, gives complete information from marriage applications.
500 pages, members \$15.75, non-members \$17.50

Clark County Washington Marriages, Vol. 6, 1916, gives complete information from marriage applications.
217 pages, members \$13.50, non-members \$15.00

Clark County Washington Marriages, Vol. 7, 1917, gives complete information from marriage applications.
429 pages, members \$15.75, non-members \$17.50

Clark County Washington Marriages, Vol. 8 1918, gives complete information from marriage applications.
485 pages, members \$15.75, non-members \$17.50

Clark County Washington Cemeteries, Vol. 1, Old City Cemetery of Vancouver, tombstone inscriptions, cemetery maps, sexton's records and some obituaries. Compiled by Mildred E. Porter.
184 pages, members \$13.50, non-members \$15.00

Clark County Washington Cemeteries, Vol. 2, includes St. James Acres, Salmon Creek Methodist, St. John's Lutheran, Pioneer and Fisher cemeteries; tombstone inscriptions, cemetery maps, funeral home and sexton's records.
217 pages, members \$13.50, non-members \$15.00

Clark County Washington Cemeteries, Vol. 3, includes Post Military, Dead Lake (Fallen Leaf), Bethel Lutheran, Washougal Catholic, Sara Union, St. Mary of Guadalupe, Ridgefield, Chelatchie Prairie, Bethel Methodist, Mt. Zion and Highland Lutheran cemeteries.
274 pages, members \$13.50, non-members \$15.00

Clark County Washington Cemeteries, Vol. 4, includes Washougal, Gardner (Hayes), Sacred Heart, Elim Lutheran, Amboy, Buncombe Hollow, Lewisville, Venersborg, Livingston and Mt. View cemeteries.
274 pages, members \$13.50, non-members \$15.00

Clark County Washington Cemeteries, Vol. 5, includes Brush Prairie, Yacolt, Hawk (Fairchild), Page (Red Rock), Sunnyside, Finn Hill, Sifton, Fern Prairie, St. John's Catho-



Clark County Genealogical Society Publications ~ Fall 1993

lic, Hurt Road, Crawford, Gravel Point, Manor Wilson Bridge, Northwood Park, and Memory Memorial Park cemeteries.

400 pages, members \$15.75, non-members \$17.50

Clark County Washington Cemeteries, Vol. 6, Camas Cemetery. Contains plot maps, cemetery history, sexton's records including plot owner, funeral home handling service and information on many unmarked graves.

365 pages, members \$15.75, non-members \$17.50

Clark County Death Records, Courthouse, Book One, 1891 - 1903. Names, date of death, sex, age, marital status, residence, place of birth, names and birth places of parents, cause of death and signer of death certificate. Compiled by Colleen Bennett.

29 pages, members \$2.70, non-members \$3.00

Diary of Cyrus Shepard, March 4, 1834 - December 20, 1835. Cyrus Shepard, a minister and teacher at Willamette Mission. He traveled to Oregon with the Jason Lee party. Compiled by Geraldine Gilman.

120 pages, members \$9.00, non-members \$10.00

The Long Trail to Paradise, Linus Brooks 1850 Journey. Linus Brooks was the founder of Brooks, Oregon; contains family photographs, genealogy and letters. Compiled by Geraldine Gilman

162 pages, members \$13.50, non-members \$15.00

Index to the Annuals of the Fort Vancouver Historical Society, 1960 - 1985, Clark County, Washington. Full name index, cross referenced.

110 pages, members \$6.75, non-members \$7.50

Skamania County Washington, Births, (1893 - 1926), Deeds & Miscellaneous Records (1855 - 1894) Compiled by Daphne Ramsey.

116 pages, members \$9.00, non-members \$10.00

All book are compiled by Clark County Genealogical Society, have paper covers and vello-binding unless otherwise noted

★★★★ *New* ★★★★★

Hamilton Funeral Records 1917-1929

Compiled by Geraldine Gilman. 126 pages, members \$9.00, non-members \$10.00

Camas Funeral Home Records 1912 - 1943

Compiled by Mildred Greening Piontek. 300 pages, over 6,000 records, members \$18.00, non-members \$20.00

★★★★ *New* ★★★★★

Skamania County Washington, Census Records, 1860, 1870, 1880, 1885, and 1887. Compiled by Daphne Ramsey 100 pages, members \$13.50, non-members \$15.00

Skamania County Washington, Marriages, 1854 - Jan. 1931 (incomplete), including abstract of marriage registrations. 1893 - 1920. Compiled by Daphne Ramsey. 196 pages, members \$13.50, non-members \$15.00

Skamania County Washington, Cemetery Records, includes cemetery records, abandoned graves, burial records and stories that tombstones do not tell. Compiled by Daphne Ramsey.

165 pages, membrs \$13.50, non-members \$15.00

St. Luke's Parish Records. Diaries of Rev. John McCarty, 1853 - 1868, and Rev. Albert S. Nicholson, 1868 - 1886. Records of baptisms, confirmations, marriages and burials. Compiled by Lesla Scott.

65 pages, members \$6.75, non-members \$7.50

Knapp Mortuary Funerals - 1907 - 1925 - records of over 2,500 funerals, 376 pages, compiled by Geraldine Gilman, members \$18.00, non-members \$20.00

★★★★ *Ordering Information*

★★★★

Postage for first book is \$2.00 with .50 for each additional book. The postage for Clark County Pioneers is \$3.00. Washington State residents must include 7.6% sales tax. Members of Clark County Genealogical Society receive a 10% discount, as reflected above, on all C.C.G.S. Publications.

Send your order to the attention of : Rose Marie Harshman, Clark County Genealogical Society, P.O. Box 2728, Vancouver, WA 98668

Exchanges? We will gladly exchange our books with your society on a page for page or equal value basis. Contact our Head Librarian, Jerri St. John, for details.

Clark County Genealogical Society Library is located at 1511 Main Street, Vancouver, WA. It is open from 1:00 p.m. to 5:00 p.m. Tuesday through Saturday.

TRAIL BREAKERS ---- CELEBRATING 20 YEARS!

LIVING LIFE MEMBERS

Marilyn J. Anderson - '92
E. June Andrews - '89
Mildred Beck - '93
William Beck - '93
Veda DeColon - '89
Elizabeth Ann Feming - '93
Herbert Feming - '93
Barbara Germann - '89
Jane Germann - '89
Rose Marie Harshman - '89
Bertha Krause - '89
Connie Lenzen - '92
Gerald Lenzen - '92
Dorothy Person - '89
Marilyn Shroll - '89
Doris Wastradowski - '89
Sharon Wodtke - '93
Margaretta Zimmerman - '91

CONTRIBUTING MEMBERS

(Contribute minimum of \$50/yr)

Mary Barnard (3rd year)
Judy Card (1st year)

**LIVING HONORARY
LIFE MEMBER:**

Evelyn Greenstreet

(Vivian Brown was an Honorary Life Member who died before the listing of life members was published on the back of the Trail Breakers. Evelyn Greenstreet and Vivian Brown were given Honorary Life Members for helping with the society in the early foundation years.)

renew your membership

Clark Co. Genealogical Society
P.O. Box 2728
Vancouver, WA 98668

ADDRESS CORRECTION REQUESTED

Non-Profit Org.
U.S. Postage Paid
Vancouver, WA
Permit No. 934

|||||
LIFE
American-Canadian Genealogical Society
P.O. Box 668
Manchester, NH 03105-0668

CELEBRATING 20 YEARS OF THE *TRAIL BREAKERS* 1973-1993