

TRAIL BREAKERS

VOLUME XIV NO.4 1987-88



CLARK COUNTY
GENEALOGICAL SOCIETY
VANCOUVER, WASHINGTON

TRAIL BREAKERS, is now published quarterly - FALL (September), WINTER (December), SPRING (March), SUMMER (June), by Clark County Genealogical Society, P.O. Box 2728, Vancouver, Washington 98668. Submit any material for publication to the editor.

Board of Directors: Bertha Krause, President; Doris Wastradowski, Vice President; Nadine Mikesell, Secretary; Ann Graham, Assistant Secretary/Treasurer.

The Clark County Genealogical Society is a service organization dedicated to the collection and publication of the heritage of Clark County. CCGS offers assistance to Genealogical researchers and family historians.

MEMBERSHIP: Membership is open to anyone interested in the collection and preservation of family and regional history. It includes a subscription to the TRAIL BREAKERS, a monthly newsletter, free check-out privileges at the CCGS Library. Membership Chairman; Wayne Bigley.

DUES: \$12.00 per year for an individual; \$14.00 for two members of the same household, receiving one subscription to the TRAIL BREAKERS. Dues are payable by June 30th. Dues for new membership after January 1st are \$1.00 per month.

GENEALOGICAL SUPPLIES: A large selection of supplies and forms are stocked and may be purchased at the CCGS Library.

MEETINGS: CCGS meetings are held on the fourth Wednesday of each month, September thru June, except November and December, which are held on the third Wednesday, due to the holidays. At 10:00 A.M., each meeting is preceded by one hour of beginning instruction held on alternate months with the computer interest group.

LIBRARY: The Clark County Genealogical Society Library is located in the Fort Vancouver Historical Museum 1511 Main Street, Vancouver. It is open Tuesday thru Saturday afternoons from 12:00 until 3:45 P.M.

Neither the CCGS or editors of the TRAIL BREAKERS accepts responsibility for errors of fact or judgement in material submitted to the TRAIL BREAKERS. If errors are brought to our attention, we will try to correct them.

TRAIL BREAKERS STAFF:

Editor...Mildred E. Porter....695-6162
Assistant Editor...Rose Marie Harshman
Surname Editor.....Delillah Knight
Ancestor Charts.....Gloria Halverson
Book Reports.....Fran Harris
Notes & QuotesDoris Wastradowski
Bible Records & Queries .Grace Jansen
Vancouver Newspapers.....Peggy Roberts
Art Consultant.....Rose Marie Harshman

The Editor accepts donations of articles, fill ins, How To's, Biographies etc. Any material may be left in the editor's File at the Library and will be greatly appreciated. Remember this is our periodical.

TABLE OF CONTENTS

More Than You Ever Wanted To Know About Genes.	2
Surveyors.	4
A Notice	8
Washington Territorial Militia In The Indian Wars.	9
Notes and Quotes	14
Vancouver Register	15
Early Clark County People.	21
The Bowmans and Van Attas	
Book Reports	25
Warning.	29
Volunteer Spotlight.	30
Ancestor Charts.	31
Mary Emerson.	31
Loretta Okel.	32
Seventy Third Indiana Volunteers In War of 1861 - 65	34
Surname File.	37
Qieroes	40
Surname Index.	42

MORE THAN YOU EVER WANTED TO KNOW ABOUT GENES

by Gene Kuechmann

Last year, in L.M. Boyd's syndicated column TRIVIA, which appears in a local newspaper, this interesting assertion appeared:

You don't get half your characteristics from your mother and half from your father. You get a quarter from each and the rest from earlier ancestors. From each of your four grandparents you get a sixteenth. Or so the scholars report.

I am curious to know what scholars report this information, as well as what it means. Certainly the statement is nonsense in a genetic context.

Your genes are actually regions of your chromosomes and consist of strips of DNA (deoxyribonucleic acid) molecules. A complete set of 46 chromosomes is found in the nucleus of every cell of your body, and each set is a duplicate of the set in the single cell from which you developed. Your mother's unfertilized ovum supplied 23 chromosomes for that first set, and the other 23 came from your father's sperm. That is, half of your genes came from one parent and half came from the other parent.

Of course, the genes of your parents came in the same ratio from their parents, so you share a fourth of the genes of each of your four grandparents. Each ancestor in the third generation back supplied an eighth of your genes, and so on. But all of these genetic contributions were funneled to you through your two biological parents.

It is thought that each person's 46 chromosomes carry about 100,000 genes. The mix of genes passed on to a child is essentially random. Considering the number of possible combinations, the probability that two ovum-sperm pairs will carry the same genes is negligible; further variations that occur at conception make the probability of siblings having exactly the same genes effectively zero. In fact, two children with the same biological parents (including fraternal twins) probably will have not more than one-half of their genes in common. (Identical twins, of course, have identical genes.)

Genes dictate the chemical composition of the proteins of which we are made, so they determine our genetic characteristics. However, the human genome has not yet been completely mapped; that is, the exact location and function of each gene is not yet known. The genetic system has built-in redundancy: a chromosome from one parent usually matches one from the other in function. (You have one gene from each parent for eye color, for example.)

The sex chromosomes are the exception to the matched-pair arrangement. A female has two X chromosomes, one each from her mother and father. But a male has an X chromosome from his mother and a Y chromosome from his father. So a child of either sex carries on the genetic line of the mother's X chromosome. However, if he has no male child, the genetic line carried by the father's Y chromosome is ended. Moreover, the gender of a child is determined by whether the father passes on to it his X or his Y chromosome. (Yet queens have lost their jobs, and sometimes their heads, for failing to bear sons!)

Lack of or damage to any given gene or gene pair can result in one of 3,000 known "genetic diseases." In a female, the effect of a defective or missing gene on one X chromosome is usually masked by a healthy, corresponding gene on the other. However, a male has no such compensation for defects of either his X or his Y chromosome. This is why such genetic diseases as hemophilia and color blindness are "carried" by daughters but usually affect only sons (unless, as happens rarely, both of a daughter's X chromosomes carry the same defect).

Almost every statement about genes and genetics must be qualified by the word "usually." The biology of genetics is intricate, and all sorts of variations are possible. A genetic variation may be deadly, it may be helpful, or it may have little effect on ability to function. Defects and mutations aside, the effect of a gene also depends on whether it is dominant, recessive, or sex-linked, whether it is sex-limited, whether its effects are modulated by environmental factors, and numerous other considerations.

DNA, the raw material of genes, is present in all body cells, including hair, blood, and semen, and since each person's DNA, or gene pattern, is unique (identical twins excepted), DNA analysis is a more certain means of identification than fingerprints or blood types. DNA analysis has already been used successfully in court and may become increasingly important in cases involving rape, murder, and even in settling paternity suits.

REFERENCES AND FURTHER READING.

- Baltimore, D. "The Brain of a Cell," *Science* 84, Vol. 5 #9 (Nov. 1984), pp. 149-151.
Baskin, Y. "Doctoring the Genes," *Science* 84, Vol. 5 #10 (Dec. 1984), pp. 52-60.
Lewis, R. "Beating the Genetic Odds," *High Technology* (Dec. 1984) pp. 73-78.
Smith, A. *The Human Pedigree*. Philadelphia and New York: J.B. Lippincott Co., 1975.



SURVEYORS

The following list of surveyors in the State of Washington was compiled by Jerry Olson of Olson Engineering, who is also a member of CCGS. If anyone has any information to expand or edit the surveyors database, Jerry would like to hear from them.

**

Type of Surveyor - Abbreviation List

c	contract surveyor (GLO before 1910)	p	private surveyor
gr	group surveyor (GLO after 1910)	ex	explorer
in	industry surveyor	ic	inspector of contract surveys
gv	government surveyor	dc	donation land claim surveyor
mn	mineral surveyor	fc	field crew for contract surveyor
de	detailed examiner (GLO)	gs	geological survey
cs	county surveyor	cg	coast and geodetic survey
ce	county engineer		

**

NAME	COUNTY	FROM	TO	TYPE	RECORDS LOCATION & MISC COMMENTS
David Thompson	Dou Che Oka Fer Lin	1811	1811	in	fur trader expld lenth of Columbia
David Thomspson	Ste	1811	1811	in	Fur trader expld lenth of Columbia
R H Thomson	Ksp	1884	1888	cs	Kitsap County
Robert Thorburn	Kng	?		p	Ramond Collier & Wade
George Thornton	Pie	1903	1907	cs	Pierce County
Jsmes Tilton	Thu	1854	1861	gv	BLM, Wash Surveyor General
James Tilton		1867	1867	in	Unknown, in charge of NPRR surveys
Abiel (Lieut) Tinkham	WW Kng Ktt Yak Ben	1853	1854	gv	Army C of E -Rd from Steilacom to W W
Louis L Tower	Ste	1899	1903	cs	Stevens County
Dwaine R Townsend	Kng	1962	1974	gv	Kng County
Dwaine R Townsend	Sno	1968	1968	p	Unknown
Dwaine R Townsend	Douglas	1974	1984	gv	Douglas County
Terry N Trantow	Kli Ska	1980	1985	p	Tramtpw land Surveying, Bingen
Albert J Treadway	Jef	1862	1863	c	BLM
Albert J Treadway	Thu	1867	1870	c	BLM
Albert J Treadway	Pie	1867	1868	c	BLM
Albert J Treadway	Lew	1869	1870	c	BLM
Milton Treftz		1960	1979	p	Gary Anderson, AnCO, Des Moines, ots ap
Ira J Trescott	Col	1896	1899	cs	Columbia County
C E Truax	Col	1876	1877	cs	Columbia
Sewall Truax	Whi	1873	1879	c	BLM - also GLD surv in Oreg
Sewall Truax	Spo Lin	1874	1881	c	BLM - also GLD surv in Oreg
Sewall Truax	Ada	1874	1880	c	BLM - also GLD surv in Oreg
Sewall Truax	Gar	1875	1878	c	BLM - also GLD surv in Oreg
Sewall Truax	Col	1875	1880	c	BLM - also GLD surv in Oreg
Sewall Truax	Aso	1876	1879	c	BLM - also GLD surv in Oreg
Sewall Truax	WW	1877	1879	c	BLM - also GLD surv in Oreg
Sewall Truax	Fra	1877	1880	c	BLM - also GLD surv in Oreg
Sewall Truax	Gra	1879	1882	c	BLM - also GLD surv in Oreg
Sewall Truax	Dou	1860	1862	c	BLM - also GLD surv in Oreg
Sewall Truax	Ste	1860	1881	c	BLM - also GLD surv in Oreg

NAME	COUNTY	FROM	TO	TYPE	RECORDS LOCATION & MISC COMMENTS
William C Trumbull	Ste P O	1898	1899	c	BLM
John Truton	Clk	1856	1858	c	BLM
Higb Truton	Jef Clm	1858	1859	c	BLM
William S Tsao	Kng	1950	1950	p	Unknown dates approx
N F Tudor	Clm	1886	1889	cs	Clallam County
Frank D Tunis	Lin	1905	1907	cs	Lincoln County
Mike Turgeon	Lew Pac Thu	1973	1976	in	Wayco, Chehalis
George A Tyler	Pie	1962	1985	gv	Pierce County PUD Wks
George A Tyler	Thu Pie	1962	1985	p	George tyler, Steilacoom
Glen Tyler	Kng	1940	1959	p	unknown dates approx
Bert Udell	Ska Kli	1950	1970	p	Bert Udell, Lebanon Oreg
Maurus S Uhrick	Sno	1939	1939	p	Unknown
C F Urquhart	Fer Oka	1902	1902	gs	USGS - triang and trav crew
C F Urquhart	Ben Kli Fra	1906	1906	gs	USGS - triang and trav crew
C F Urquhart	Che Dou Oka	1912	1912	gs	USGS - triang and trav crew
C F Urquhart	Cla	1917	1917	gs	USGS - triang and trav crew
Valentine	Kng	?		p	Unknown
Valle Engineers	Kng	?		p	Unknown
J H H (Maj) Von Bokkelen	Kng Ktt	1856	1856	gv	first explored Snoqualmie Pass
Lewis Van Vleet	Klk Cow Ska	1855	1885	p	Unknown, last date approx
Lewis Van Vleet	Cow	1856	1876	c	BLM
Lewis Van Vleet	Wah	1856	1857	c	BLM
Lewis Van Vleet	Clk	1856	1857	cs	Gone, burned in courthouse fire, in 1890
Lewis Van Vleet	Skm Clk	1859	1860	c	BLM
Lewis Van Vleet	kli	1860	1861	c	BLM
Lewis Van Vleet	W W	1861	1862	c	BLM
Lewis Van Vleet	Lin	1873	1886	c	BLM
Lewis Van Vleet	Ksp	1874	1875	c	BLM
Lewis Van Vleet	Lin	1877	1886	c	BLM
Lewis Van Vleet	Oka Fer Ste	1880	1886	c	BLM
Lewis Van Vleet	Spo	1880	1881	c	BLM
Lewis Van Vleet	Yak Ktt	1881	1882	c	BLM
Lewis Van Vleet	Dou	1885	1886	c	BLM
Frank J Van Winkle	Pac G H	1901	1902	c	BLM - also GLD surv in OREG
George (Capt) Vancouver	Pac GH Jef Cla isl	1792	1792	ex	map Columbia south - Brit Explorer
George (Capt) Vancouver	Mas Thu Pie Kng Ksp	1792	1792	ex	Mapped Puget Sound for Britain
George (Capt) Vancouver	Sno Skg Wha isl SJ	1792	1792	ex	mapped Puget Sound for Britain
Merwin (Lieut) Vavasour	Pac	1845	1845	in	Hud Bay surv - mapped Cape Disappointmt
Ross R Vickers	Sno	1940	1949	p	Unknown dates approx
Ross R Vickers	Cow	?			Unknown one map at Cow Courthouse
L C Vickery	Pac G H	1891	1893	c	BLM
L C Vickery	Jef Mas	1892	1893	c	BLM
L C Vickery	Pac	1893	1895	cs	Pacific County
Edward F Vincent	Kng Pie	1981	1984	p	Barnard Saddler
Arthur T Waaga	Kng	?			Unknown one map at Cow Courthouse
Elijah L Wade	G H	1891	1892	c	BLM
Floyd Waite	Isl	?		p	Island Co Courthouse
C W Walker	Jef	1902	1907	cs	Jefferson County
George F Walker	Kng	1953	1985	p	Walker & Assoc, Sea
Harold Walker	Pie	?		p	Pierce County
Walker & Whitef	Kng	?		p	Walker & Assoc, Seattle
Dennis Wallace	Clk Cow Skm	1975	1978	p	Hagedorn Inc, Vancouver
John Wallace	Ktt	1883	1866	cs	Kittitas County - 2 terms not contin.
John Wallace	Kng	1960	1982	p	Kennedy Group bgng date approx
Walker	Kng	1938	1960	p	Entrenco Assoc, Sea - U of Alask, Col A.
Walker	Kng	1938	1960	p	Entenco, Bellevue-Hubbell & Waller

NAME	COUNTY	FROM	TO	TYPE	RECORDS LOCATION & MISC COMMENTS
Walsn	Kli Clk Ska Cow Wah	1906	1923	p	Elton Carter, Milw, Or-Newell Gos Wals
Wanamaker	Isle	?		p	Island Co Courthouse
John L Warboys	Ktt	1916	1916	gr	
Ward	Gra Ktt Che Dou	1881	1882	c	BLM
Ward	Thu Pac G H	1881	1882	c	BLM
C C Ward	Kng	1896	1897	c	BLM
C C Ward	Clk	1896	1896	gs	UGGS - Leveling crew
Gilbert M Ward	Cla	1881	1886	c	BLM
Gilbert M Ward	Gra	1881	1882	c	BLM
Gilbert M Ward	G H	1883	1891	c	BLM
Gilbert M Ward	Lew Pac	1890	1891	c	BLM
Willaim B Ward	Kli	1954	1954	in	St Regis
Alfred Ware	Cla	1889	1891	cs	Clallam County
Alfred Ware	Cla	1906	1908	cs	Clallam County
William J. Ware	Cla	1902	1906	cs	Clallam County
William J Ware	Cla	1918	1921	ce	County Engineer
W G Warnick	Cow	1923	1923	gv	Cowlitz Co
Henry J (Lieut) Warre	Pac	1845	1845	in	Hud Bay surv- mapped Cape Dissapoint.
F A Warren	Che	1912	1916	ce	Chelan County
Washington Titl	Kng	?		in	Ticor Title ins Co, Seattle
W O Watson	Ksp	?		p	Ward Mueller, Port Orchard
William P Watson	Thur	1894	1898	gv	BLM (Surveyor General) of Wash
Webb	Kng	?		p	Duffy Lawyer & Kumpf, (Minnish & Webb)
H Webber	Jef	1863	1879	cs	Jefferson County
W T Webber	Spo	1880	1881	gv	Army Corps of Eng
Robert A Webster	Clk	1890	1920	p	Unknown
Robert A Webster	Skm	1892	1897	c	BLM
Robert A Webster	Clk	1893	1897	c	BLM
Robert A Webster	P O	1894	1895	c	BLM
Robert A Webster	Clk	1896	1896	in	Unknown
Robert A Webster	CLK	1899	1900	gv	Clark CountyEngr(Dept Co. Surveyor)
Robert A Webster	Clk	1907	1908	cs	Clark county Engineer & Surveyor
Walter R Weedom	Kng	1920	1952	p	Bush Road & Hitchings, much destroyed
W B Wells	Clk	1970	1985	p	W B Wells, Portland mainly sort surv
William Wemeier	Kng	?			Unknown
West	Kng	1968	1969	p	Jones Assoc, Sea-Hartman West & Assoc
Western Pac Lum	Kli	1920	1920	in	Mult Co Oreg (one surv, dates approx)
R C Wistwick	Cow	1913	1925	gv	Cowlitz Co
Horace Wetherall	Ska	1896	1901	cs	Skamania County
Horace Wetherall	Ska	1907	1907	gv	Skamania County - dep co engr
John Wetzel	P O	1895	1900	c	BLM
John Wetzel	Spo	1898	1890	cs	Spokane County
John Wetzel	Oka	1903	1904	c	BLM
Lloyd Way	Kng Ksp	?		p	Ward Mueller, Port Orch & see J Baima
James A Whealcon	Pac	1875	1884	c	BLM
James A Whealcon	Pac	1890	1890	cs	Pacific County
Albert P Wheeler	Oka	1907	1909	cs	Okanogan County
Guy Wheeler	Ksp	?		p	Ward Mueller, Port Orch
Julius B Wheeler		1856	1859	gv	Army C of Eng- surv Wagon Roads
W S Wheeler	Skg Sno Wha	1898	1898	gs	USGS - leveling crew
John Whidbey	Isl S J Skg Wha	1792	1792	ex	explored Puget Sound w/Vancouver
Aleric C White	Kng	?		p	Unknown
Arthur M White	Gra	1880	1882	c	BLM
Arthur M White	Spo	1880	1863	c	BLM
Arthur M White	Dou	1880	1882	c	BLM
Arthur M White	Lin Fer Ste	1882	1883	c	BLM

NAME	COUNTY	FROM	TO	TYPE	RECORDS LOCATION & MISC COMMENTS
Charles A White	Yak	1865	1866	c	BLM
Charles A White	Spo Lin	1873	1875	c	BLM
Charles a White	Pie	1877	1878	c	BLM
Clarence I White	Kng	1894	1895	p	Unknown
David H White	Pie	1880	1960	p	Pierce Co Pud Works, dates approx
David H White	Pie	1890	1893	cs	Pierce County
David H Wite	Pie	1914	1919	cs	Pierce County
E E "Red" White	Pie	?		p	Pierce Co Engr
H K White	Ksp	1859	1881	cs	Kittsap County
Jay Whiteford	Kng	?		p	Walker & Assoc, See Walke & Whiteford
Paul P Whitham	Dou Gra Fer Lin Ste	1906	1907	c	BLM
Paul P Whitham	Oka	1906	1907	c	BLM
Robert F Whitham	Cla	1889	1890	c	BLM
Robert F Whitham	Pac	1895	1896	c	BLM
Robert F Whitham	Lew	1895	1905	c	BLM
Robert F Whitham	Kng Pie	1897	1905	c	BLM
Robert F Whitham	Che	1898	1899	c	BLM
Robert F Whitham	Ste	1898	1902	c	BLM
Robert F Whitham	Ska	1903	1904	c	BLM
Robert F Whitham	Ktt Skg	1904	1905	c	BLM
Robert F Whitham	Dou Oka	1906	1909	c	BLM
Robert F Whitham	Gra Fer Lin	1906	1907	c	BLM
Len Whittier		1938	1938	in	NPRR
Drew L Whittle	Clk	1972	1975	p	Hagedorn Inc
Drew L Whittle	Clk Lew Ktt Yak	1975	1978	p	Haner Ross & Sporseen, Portland
F H Whitworth	Ksp	1884	1888	cs	Kitsap County
George F Rev Whitworth	Isi	1860	1872	cs	Island County
George F Rev Whitworth	Kng	1870	1872	c	BLM
George F Rev Whitworth	Isi	1870	1871	c	BLM
George F Rev Whitworth	S J	1873	1874	c	BLM
J E Whitworth	Kng	1883	1884	c	BLM
J E Whitworth	Kng	1890	1900	p	Jones Bassl & Assoc (Whitworth & Cotril)
J M Whitworth	S J	1874	1875	c	BLM
John Whitworth	Kng	1872	1873	c	BLM
John Whitworth	S J	1873	1874	c	BLM
Whitworth, R&H	Kng	?		p	Jones Bassi & Assoc (Whitworth & Cotril)
Wilken.	Kng	?		p	Unknown
Charles (Com) Wilkes	Thu Lew Cow	1841	1841	gv	American explorer for USA
Charles (Com) Wilkes	Pac Wah Cow ClkSka	1841	1841	gv	American sent to map Columbia & Pug Snd
C D Williams	SkM	1903	1906	cs	Skamania County
C D Williams	SkM	1927	1927	gv	Skamania Co dep co engr
D H Williams	Clk	1948	1948		Unknown - tag in Sec 5 2N, 4E
David T Williams	Ksp	1893	1895	cs	Kitsap County
Paul Williams	Kng	?		p	Hugh Goinsmith & Assoc-Prst E Amer Eng
Theodore Williams	Ksp	1861	1884	cs	Kitsap County
Robert (Major) Williamson	Kli Ben	1866	1871	gv	Army C of Eng - Supv surv of rapids
Olaf Willumsen	Kng	1930	1969	p	Unknown, dates approx
Daniel Wilson	Ste	1879	1879	cs	Stevens County
J B Wilson	W W	1885	1886	cs	Walla Walla County
J B Wilson	Ste P O	1908	1909	c	BLM
James E Wilson	Wha	1970	1979	p	Steele & Assoc, Bellingham
James H (Lieut) Wilson	Thu Lew Cow	1855	1855	gv	Army C of Eng - recovered NPRR Oly South
John E Wilson	Kng	1950	1959	p	Unknown dates approx
John M (Major) Wilson	Cow Kli Ben Pie	1875	1878	gv	Army C of Eng

NAME	COUNTY	FROM	TO	TYPE	RECORDS LOCATION & MISC COMENTS
Lew A Wilson	W W	1886	1887	cs	Walla Walla County
Lew A Wilson	Lew	1897	1898	c	BLM
Lew A Wilson	Ktt	1900	1908	c	BLM
Lew A Wilson	Col	1901	1902	c	BLM
Lew A Wilson	Oka	1907	1907	c	BLM
Lew A Wilson	Cow Yak Skg	1909	1910	c	BLM
Thomas R Wilson	Pie	1887	1889	cs	Pierce County
Thomas R Wilson	Ksp	1897	1898	cs	Kitsap County
P T Wilstse	Kng	?		p	Unknown
George W Winkle	W W	1893	1911	cs	Walla Walla County-2tws 93-95,07-11
T R Winston	Lew	1874	1875	cs	Lewis County
P L Wise	Clk	1919	1919	p	Unknown, one surv, Sec 16, 3N 3E
Adrian W Wisner	Ste Lin Spo	1886	1887	c	BLM
John (Lieut) Withers	Clk	1854	1855	gv	Army C of eng - road surveyor - Ft Van
J B Woffenden	Sno	1922	1922	p	Unknown
David A Wolfer	Lew G H Pac Thu	1972	1985	gv	DNR Olympia
A B Wood	Pie	1890	1893	cs	Pierce County
L Woodman	Kng Pie	1890	1891	c	BOM
C T Worley	Ben Fra W W	?		p	Ralph H Worley, Kennewick
Richard F Worthen	CLK	1973	1974	p	see Bom Bickford, Vanc
Richard F Worthen	Kng	1973	1974	p	Unknown, see Tom Bickford, Vancouver
Worthen & Bickf	Clk	1973	1974	p	Bickford & Assoc, Vanc
Irving Worthington	Spo	1890	1900	in	BLM, others unknown
Irving Worthington	Che	1892	1903	c	BLM
Irving Worthington	Oka	1902	1903	c	BLM
Thomas J Wyche	Yak	1896	1897	c	BLM
Thomas J Wyche	Kli	1896	1898	c	BLM
Thomas J Wyche	Ste	1897	1898	c	BLM
H J Yager	Sno	1913	1913	p	Unknown
A F York	Ktt	1887	1906	cs	Ktt County - 3 tws 87-91,95-96,04-06
R H Young	Sno Cla Jef	1893	1894	c	BLM
Ted Young		1957	1957	in	NPRR
P Zanner	W W	1875	1880	cs	Walla Walla County
Latimer Zanski		1939	1939	in	NPRR
Edwin Zapel	Kng	?		p	Unknown
Howard R Zenier	Clk	1955	1955	p	Unknown
Henry Zepeda		1960	1960	gv	DNR
Gene R Zerby	Thu	1974	1985	p	James Pantier, Lacey
H E Zimmerman	Sno	1920	1950	p	Unknwon, Riverson & Zimmerman
John Zimmerman	Dou	1902	1903	cs	Douglas County

The Conclusion



NOTICE

Beginning research on a genealogical type history of the Vancouver Police Department (Vancouver, WA). To be published on completion by the Clark County Genealogical Society of Vancouver, WA. Anyone with Vancouver Police Department connections, ancestors or present family members, please contact me to set up an interview. Present police officers can verify authenticity of this ad with Capt. Robert M. King, Vancouver Police Dept.

Richard N. Grafton, 401 N.W. 85th St. Vancouver, WA 98665
Phone- 574-2845, after 5 p.m.

WASHINGTON TERRITORIAL MILITIA IN THE INDIAN WARS OF 1855 - 1856

Washington National Guard Pamphlet Vol. 2 page 127 - 147

Many early historians have published listings of those early Washington citizens who served as Volunteer Militiamen. Most have confined their listings to a particular area to coincide with history of their locality. There is a complete listing of the state in this Volume. The source document is the 3rd Auditor of the Treasury vouchers which also list the correct designation of the unit, which likewise has been listed in various ways in the past. Following the listing of the 41 units of the two regiments a diary depicting life in one of the Volunteer companies is published in its entirety. The Journal covers only the first phase of the war and is the only one of its kind found in the Indian war papers. I like the others have only given here the lists of Militiamen of Clark county volunteers with inclusion of the roster of the Indian auxiliaries using their tribal name. Excerpts from the diary will be given also.

Personnel, Supply, Miscellaneous, Indian Wars, 1855-56
Captain William Kelly's Co. A - Washington Volunteers, Mounted Scouts
Served 99 days during period from Oct. 26, 1855 to Feb. 2, 1856
(Vancouver)

William Kelly, Captain	Buchanan, P.N. Corp.	McCarty, Edward	Pvt
John D. Biles, 1st Lt.	Riggs, Reuben Corp.	Minnie, John	do
Patrick Ahern, 2nd Lt.	Birch, Peter Pvt.	Stice, Peter	do
Joseph Wright, 1st Sgt.	Dodd, John C. do	Strong, H.H.	do
Philip Hanselman, Sgt.	Hart, George W. do	Smith, John F.	do
Henry Burlingame, Corp.	Hartley, Benj. do	Schroder, Jacob	do
A. C. Short, Corp.	Irby, Charles do	Spurgeon, Matthias	do
W. S. Hatton, Sgt.	Durgan, Joseph do	Turner, John	do
David Parker, Sgt.	Linsey, John do	Ryan, William	do
Bateman, Nicholas, Pvt.	French, Egbert do	Tooley, John	do
Morrow, George W. do	Murphy, Elliott do	Wallace, Lewis	do
Phillips, Alonzo do	Mathews, J. L. do	Seward, Orson M.	do
Vogelsandt, William do	McFadden, O.B. do		

AUDITOR'S NOTE: This company if such it can be called, is greatly under the minimum according to the Army Regulations, therefore in calculating this pay they are all regarded as privates with the exception of the Captain, he is a Corporal.

CAPT. HAMILTON J.G. MAXON'S Co. of MTD Vol.s, 2nd Regt.
"Washington Mounted Rifles" (Clarke County area)

H.J.G. Maxon Capt.	Allen Turner, Musician	Burke, James A. Private
Irvin J. Taylor, 1st Lt.	Andrews, Chester Private	Bynan, David do
Wm. S Bennington, 1st Lt.	Allen, Benjamin do	Butler, William do
Silas B. Curtis, 2d Lt.	Assure, Antoine do	Bartlett, James P. do
Alex. McAndrew, 1st Sgt	Auger, Paul do	Barton, Jonathon do
Ambrose S. Cummings, 2d Sgt	Anderson, John S. do	Bell, Charles do
Archibald Taylor, 3d Sgt	Burgy, John do	Burns, Adam do
George Dean, 4th Sgt.	Bates, Tyler do	Collins, Henry S. do
Walter McKenzie, 1st Corp.	Buston, John do	Campbell, William do
Michel Marchino, 2d Corp.	Burns, George do	Coffee, Alexander L. do
Peter J. Stice, 3d Corp.	Brezee, Almond D. do	Como, Thomas do
Robert Weldon, 4th Corp	Brezee, Francis M. do	Durgan, John H. do
		Defflerny, William do

Capt. H.J.G. Maxon's Co.--Contued

Dick, Richard	Private	Irvin, James	private	Sims, Nathan	Private
Davis, George G.	do	Kane, Andrew J.	do	Totten, James B.	do
Doud, Phenis	do	Lakin, William	do	Turner, Hiram	do
Duparry, Joseph	do	Lindsay, John B.	do	Tooley, William	do
Duston, Charles S.	do	Legg, William	do	Taylor, Jordon O.	do
DeShaw, John	do	Leclare, Lewis	do	Taylor, Mortimer W.	do
Edwards, George	do	Legard, Joseph	do	Torby, William B.	do
Frazer, Thomas	do	Martin, Harvey	do	VanBuskirk, Daniel	do
Frisbie, James A.	do	Martin, Terry	do	VanBuskirk, Andrew	do
Frisbie, Henry M.	do	Maxon, Silas D.	do	Williams, George	do
Gee, William	do	McArd, James	do	Williams, John	do
Goddard, William	do	McDonald, Stephen P.	do	Wilson, Daniel	do
Gravelle, Francis	do	Miller, Ziba S.	do	Weffler, John	do
Hoquet, Mario	do	Michel, Andrew	do	Wilson, William	do
Howe, John	do	Oyhee, Andrew	do	Wallas	Indian
Howard, John	do	Osterland, Francis	do	Frank	do
Hulbert, Jacob	do	Sharpe, Willaim A.	do	Andy	d0
Hull, William	do	Stanley, Joseph	do	Varzier, Lesta	Private
Inqalls, James	do				

CAPTAIN WILLIAM KELLY'S "Clark County Rangers" 2nd Regt. Wash. Vol.s
Served 101 days from April 6 to July 16, 1856

William Kelly,	Capt.	Private	Private
John D. Biles,	1st Lt.	Fletcher, William H.do	McFaddon, O.B. do
Amos C. Short,	1st Lt.	Farr, Morgan do	McFaddon, William do
Patrick, Ahern,	2nd Lt.	French, William P. do	Parker, J. M. do
George W. Hart,	1st Sgt.	Gibbons, Joseph do	Petter, Benjamin do
H.S. Burlingame,	2d Sgt.	Gibbons, Jacob do	Proebstel, John do
Phillip Hanselman,		Green, Norman do	Proebstel, Jacob do
	3d Sgt.	Goddard, Joseph do	Proebstel, Valentine do
Richard, Covington		Gentis, Abraham do	Proebstel, George W. do
	4th Sgt.	Finckley, Brown do	Puelea, Moses do
J.E.C. Durgin,	1st Corp.	Houston, Albert A, do	Parker, D. C. do
Alonzo Phillip,	2d Corp.	Haber, Frederick do	Riggs, Reuben do
Walter P. Mabry	3d Corp.	Haber, Peter do	Rabbi, Abraham do
Birch, Peter	Private	Irby, Charles S. do	Shockley, Jacob do
Bennett, J. A.	do	Isbister, John do	St.Andrews, Peter Sr.do
Buchanan, Phillip	do	Lafrombois, Francis do	St.Andrews, Peter Jr.do
Bell, Isaac E.	do	Lee, Josiah do	Sturgis, David do
Brunner, John S.	do	Moffit, William F. do	Schub, Epperhart do
Bird, John	do	McCallister, James do	Smith, John F. do
Campbell, John	do	McCarry, Richard do	Sturgis, O. D. do
Campbell, William B.	do	Messenger, John E. do	Tooley, John S. do
Chambree, Edward	do	Morse, Henry C. do	Tooley, O. F. do
Davis, Alexander	do	Matthew, Samuel do	Tamar, B. F. do
Dodd, John C.	do	McCallister, Alexander	Wiggle, Daniel do
DeRash, Charles	do	do	Wright, Joseph do
Fletcher, Thomas J.	do	Marble, Butler E. do	



CAPT. BRATTON'S CO. of "Lewis River Rangers" 2nd Regt. Wash. Vol.s
Served 91 days from Nov. 1, 1855 to Jan. 31, 1856

William Bratton, Capt.	Caples, Hezekiah Private	Powell, William Private
Schubel C. Achilles, 1st Lt	Eaton, Jeremiah do	Powell, Jackson do
John Davenport 2nd Lt.	Gardner, Daniel W. do	Pollock, John do
Thomas R. Little, 1st Sgt.	Huff, Jefferson do	Poppleton, Edgar do
Christ C. Bozarth, 2d Sgt.	Galbraith, John do	Popplston, Edwin do
John H. Timmons, 3d Sgt	Kraft, Henry C. do	Powell, Jephtha do
Benjamin D. Stivers, 4th Sgt.	Lane, Richard do	Irwin, William do
William Miller, 1st Corp.	Lancaster, Columbia do	Springer, John do
Lewis Powell, 2nd Corp.	Limberson, Timothy do	Williams, John do
John E. Benzer, 3d Corp.	Laffer, Phillip do	Whitaker, Isaac do
Squire J. Bozarth, 4th Cpl.	McIntyre, Andrew do	Eaton, Joseph do
Bratton, William Jr. Private	Nedron, Christian do	Lucas Indian
Bozarth, Owen W. do	Nitles, Spencer D. do	Ausity Indian
Blockader, Joseph do	Meaner, Daniel do	Laffer, Phillip Private
Caples, Joseph do	Powers, David R.R. do	

[Capt. Strong's Co. "A" was copied and placed in the "Trail Breakers" Vol XIII, No 4 page 24, and will not be reprinted here.]

NEZ PERCE MOUNTED VOLUNTEERS, 1st Regt. Wash. Vol.s
Served 36 days from Dec. 15, 1855 to Jan. 20, 1856 (Lapwai area)

Spotted Eagle, War Chief	U-oo-li Warrior	Silas Warrior
Looking Glass, Warrior	Tue-ee-takus do	Seven-days-whiping do
Joseph do	Wees-tass-kut do	How-lish-wun do
Lone Bird do	Wah-wee-mash-wattus do	Boy do
Three Feathers do	Red Eagle do	Him-in-ill-pilp do
Real Grizzly do	Tow-ish-oells do	Lodge do
Red Crow do	Young-tow-hist do	Hat-tun-bun do
Ou-tashen do	Fish-tone do	Koos-hoots-u do
Wet-yalome-went do	Ess-scoh-tum do	Ip-ni-pal-pun do
James do	We-ass-kuss do	Naph-for do
Wetter-a-hi-pun do	Tim-mish-lah-poo do	U-shay-ky-ik do
Nats-en-pow do	Peep-home-kun do	Broken Arm do
Pall-a-hen do	Will-lee-apmun do	Bears Claw do
Has-hen-ka-kin do	Sloop-toop-min do	Hump Back do
Nosep-ta-kelsa do	Duck do	Koo-wanche do
Wanes-at-wates do	Ack-ack-ton-hun do	The Old Bear do
Nay-ap-an-ack do	Wee-at-say-kun-155 do	Hote-Hose do
Billey do	Red Bird do	How-lish-toh-ky-ee-tut do
Talking Tobacco do	Talla-home-mish do	Timothy do
Wahp-shee-li do	Att-matt-sone-poo-un do	Ume-u-il-pilp do
Tu-ki-en-lik-it do	Ay-mop-ti-um-ipputs do	Al-wee-see-is-kum do
Jason do	Tee-pahee-lis-kut do	U-me-ah do
Captain John do	Jessie do	
George do	Moh-see-chah do	

NOTE: This award was made by the Secretary of the Interior based upon a claim approved by Congress in August, 1875.

FIELD AND STAFF, 2ND REGIMENT, Washington Territory Volunteers

Name	Rank	Position	Period Served
James Tilton	Brigadier General	Adjutant General	Oct 14, 1855 to Jun 30, 1857
Benj. F. Shaw	Lieut. Colonel	Asst. Adj. Gen.	Dec 31, 1855 to Apr 30, 1857
		Comdr, Right Wing	
Edward C. Fitzhugh	Lt. Col.	Aid to C in C	Oct 14, 1855 to Feb 28, 1857
Henry R. Crosbie	Lt. Col.	Aid to C in C	Feb 23, 1856 to Oct 13, 1856
Jared S. Hurd	Lt. Col.	Aid to C in C	Feb 16, 1856 to May 25, 1856
William Craig	Lt. Col.	Aid to C in C	Dec 31, 1855 to Oct 30, 1856
Edward Lander	Lt. Col.	Aid to C in C	Nov 9, 1855 to May 24, 1856
Sidney S. Ford, Sr.	Lt. Col.	Aid to C in C	May 15, 1856 to Oct 30, 1856
James Doty	Lt. Col.	Aid to C in C	Dec 2, 1855 to Apr 15, 1856
Edward Gibson	1st Lieut.	Aid to C in C	Apr 3, 1856 to Jul 22, 1856
Walter W LeLacy	Captain	Actg Adj. Rt Wing & Engineer Officer	Feb 20, 1856 to Apr 1, 1856
William W. Miller	Brig. Gen.	Quartermaster and Commissary General	Jan 20, 1856 to Apr 1, 1857
James K. Hurd	Lt. Col.	Asst QM General	Jan 17, 1856 to Mar 1, 1857
Charles E. Weed	Captain	Asst QM Olympia	Feb 1, 1856 to Sep 1, 1856
Warren Gove	Captain	Asst QM Steilacoom	Feb 1, 1856 to Sep 1, 1856
Franklin Matthias	Captain	Asst QM Seattle	Jan 29, 1856 to Aug 15, 1856
Reuben S. Robinsen	Captain	Asst QM Pt Townsend	Feb 2, 1856 to Aug 15, 1856
A Hugh Robie	Captain	Asst QM Dallas, OT	Feb 18, 1856 to Apr 1, 1856
Marshall R. Hatheway	Capt.	Asst QM Vancouver	Feb 18, 1856 to Jun 10, 1856
M. B. Millard	Captain	Asst QM Vancouver	Jun 11, 1856 to Feb 20, 1857
Christopher C. Pagett	Capt.	Asst QM Cowlitz	Apr 3, 1856 to Jul 16, 1856
C. H. Armstrong	Captain	Asst QM Rt Wing	May 3, 1856 to Nov 30, 1856
Robert Hunt	Sergeant	QM Sergeant	Apr 16, 1856 to Jun 12, 1856
G K. Willard	Major	Regtl Surgeon	Feb 1, 1856 to Oct 30, 1856
M. P. Burns	Major	Surgeon	Oct 14, 1855 to Oct 17, 1856
R. M. Bigelow	Major	Surgeon	Feb 25, 1856 to Jun 25, 1856
Samuel McCurdy	Major	Surgeon	Feb 18, 1856 to Aug 16, 1856
Henry P. Smith	Major	Surgeon	Feb 7, 1856 to Jul 29, 1856
Justin Millard	Major	Surgeon	Mar 1, 1856 to Oct 30, 1856
W. D. Warbass	Captain	Asst Surgeon	Apr 3, 1856 to Jul 17, 1856
Daniel Kiser	Captain	Asst Surgeon	Apr 30, 1856 to Jul 22, 1856
Henry Tuzo	Captain	Asst Surgeon	May 1, 1856 to Jul 16, 1856
Albert Eggers	Captain	Asst Surgeon	Mar 26, 1856 to Apr 30, 1856
J.J.H. VanBokkelen	Major	Comd. North. Bn	Mar 16, 1856 to Oct 17, 1856
Gilmore Hays	Major	Comd. Cent. Bn	Feb 22, 1856 to Apr 10, 1856
George C. Blankenship	Major	Comd. Cent. Bn	May 31, 1856 to Oct 30, 1856
H.J.G. Maxon	Major	Comd. South. Bn	Apr 15, 1856 to Oct 30, 1856
Eustis Huger	1st Lieut.	Adj. Right Wing	Feb 21, 1856 to Jun 29, 1856
A. J. Kane	1st Lieut.	Adj. Right Wing	Apr 26, 1856 to Jun 6, 1856
Humphrey Hill	1st Lieut.	Adj. North Bn.	Mar 16, 1856 to Sep 20, 1856
B. F. Ruth	1st Lieut.	Adj. Cent. Bn.	Jun 25, 1856 to Oct 30, 1856
George Gallagher	1st Lieut.	Adj. South. Bn.	May 11, 1856 to Jul 28, 1856
Henry Gallagher	Sergeant	Sgt. Major	Apr 9, 1856 to Oct 17, 1856



CAPT. HENRI M. CHASE'S CO. "M", MTD VOLS, 2nd Regt., Wash. Vols.
Served 123 days from Mar 11 to July 12, 1856 (Walla Walla County)

Henri M. Chase, Capt.	Pip-hom-kun	Ind. Private	Ea-kake-tam-otaut,	Indian
P.M. LaFontaine, 1st Lt.	Pouen-in-il-pilps	do	Jesse	Priv.
Louis Raboine, 2nd Lt.	We-shin-me-shus-tim-timin		Quish-Keesh	do
W. A. Tallman, 1st Sgt.	Tain-lik-ish	do	Wap-tash	do
D. G. Leonard, 2nd Sgt.	Hiram	do	George	do
Silas W. Lilly, 3rd Sgt.	Ta-kash-mish	do	Til-til-kos-tsut	do
George W. Grimes, 4th Sgt.	Sim-i-pello	do	In-skulta	do
Thomas Stratton, 1st Cpl.	Wat-yat-mus-wat-so-known		Wat-yat-mus-waset	do
Craig, J. W. Private	Ip-ma-tam-owe-yet-wa	do	Was-ku-na-tu-tamosut	do
Hall, Samuel do	Ko-ko-il-pilp	do	In-ma-tu-walsa	do
Samuel Indian Private	Takin-Kulst	do	Hote-hose	do
Spotted Eagle do	Whe-tsme-ta-kal-si	do	Wo-wo-kea-il-pilp	do
Ko-ko-wy-e-he-nicht do	Wow-inesh-ash-watish	do	Pierre	do
Kulo-wohike do	Tamsh-tle-wat	do	Tlil-kun-kine	do
Wat-i-wat-i-wchike do	Nick-eas-tsutlem	do	Umea-il-pilp	do
Weas-kishen do	Waptash-tanana	do	Red Eagle	do
Tsun-is-tle-poos do	In-ma-tune-pun	do		
Timothy do	Im-otus-tin-tin-im	do		

RECAPITULATION: Total number serving in 1st Regiment- 776, - Total number serving in 2ns Regiment - 1,348, Losses - both regiments: Killed or died 16, Discharges: Disobedience of order, 0 Dishonorable and refusal to take oath 24. Total 88. Officers resigned 20, Aggregate 108.

NOTE: The Vouchers from which these rolls were taken could provide a lengthy story themselves. From a study made, it is apparent that each private or Indian auxiliary was to receive \$2.00 per day and non-commissioned and commissioned officers proportionately more. The rolls thus show the amount claimed by the individual for pay, use and risk of horses or arms lost on the debit side of the voucher. On the credit side is shown the amounts allowed by the auditor for pay, use and risk of horses, total amount due claimant, less stoppages for lost clothing, arms, etc and less the 3rd Auditor's commission. A typical example is shown on the Voucher for the Nez Perce Auxiliaries. Spotted Eagle, the Chief claimed \$72.00 pay and \$72 for use and risk of horses for a total of \$144.00. The Auditor allowed him \$95.33 for both, less the commission of \$8.00. The balance of his warriors claimed the same amount and all were allowed \$33.41 which represented the pay of a private of the regular army for a like period. Captain Ford of the Walla Walla Mounted Militia claimed pay and allowances in the amount of \$349.65 for 111 day's service. He was allowed a claim in the amount of \$73.33 which was calculated on the prevailing army rate for a 2nd Lieut for a period of 30 days. He was paid by the Indian Department for the other 81 days. Apparently the Auditor based his findings on the actual worth of the individual during his service. In case of actual combat with the Indians, in which the individual had performed efficient service, he was more liberal. Major Maxon's claim was for \$790.46 of which the auditor allowed \$466.10. It is also quite evident as the result of exhaustive research that none of the volunteers, except the Nez Perce Auxiliaries, was ever paid anything by the U S Government. If such pay was made, it was done on an individual claim basis, as no territorial records could be found to verify any payments. In 1909 the State Legislature enacted a law providing \$2.00 per day to Indian War survivors, less any previous payments made by the U S Government. \$20,000 was appropriated by the Legislature for this purpose. This was followed by another appropriation of \$10,00 at a special session in 1909 and still another \$5,000 in 1911. In this report to the Governor in 1912, the Adjutant General reported that there remained only \$1,526.17 of these appropriations, with little likelihood that there would be any further claims.

Next Issue: "A Few Excerpts From Captain Ebey's Records"

NOTES & QUOTES

SEMINARS & WORKSHOPS

Genealogical seminars are sponsored yearly by many genealogical societies. Clark County Genealogical Society sponsors one annually in the spring. A great deal of effort goes into selecting a speaker/speakers for the day with particular attention given to his/her credentials, whether he/she is well known, has published books on genealogical research, etc. All those enrolled for the one-day seminar are given the opportunity to acquire information regarding the usual and unusual genealogical puzzles. There is always time given by the speaker for a question and answer period. The subjects of lecture center around research in particular geographical areas, historical records, military records, vital records, church records, immigration patterns, overseas research, and many more subjects too numerous to mention. It is not "just another genealogy class," and there is much to be gained by attending one or more a year.

A WORKSHOP differs from a seminar in that the members of the society that sponsors the workshop devote the day to assisting visitors with particular genealogical problems. There are a number of tables set up, each designated to an area of the United States or to foreign research, computer interest, LDS records, D.A.R. and Mayflower representation. Those in attendance are knowledgeable members of the society and are most accommodating in helping those involved in family research. A workshop is of benefit to individuals in any phase of family research and is not necessarily confined to help for beginners.

PHOTOGRAPHS

An old photograph with a funny looking little tax stamp (s) on the reverse side will enable you to put a date on it as tax stamps were only used on photos from September 1864 to August 1866.

DID YOU KNOW? that the Salvation Army locates missing relatives who haven't been heard from for years. The Salvation Army's Missing Persons Locator Service extends to 86 countries and will make a search for the modest fee of \$5.00. However, there are certain guidelines:

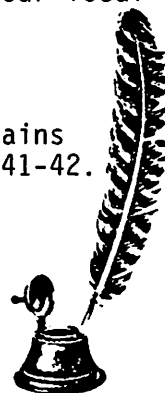
1. The person you want to locate must be a close relative, not a friend.
2. You must be able to provide essential information re the missing person.
3. The Salvation Army will not search for people for the purpose of collecting debts; nor men or women who have deserted their families; nor will it search for people in adoption situations.

To obtain information and/or a missing persons inquiry form, contact your local Salvation Army office. (From Dear Abby, Abigail Van Buren)

A nickname is the hardest stone that can be thrown at a genealogist.

The world's largest cemetery is one in Leningrad, U.S.S.R., which contains over 500,000 of the 1,300,000 victims of the German army's siege of 1941-42.

DORIS WASTRADOWSKI



VANCOUVER REGISTER

The "VANCOUVER REGISTER" has been abstracted from microfilm on file at the Clark County Historical Society and the Fort Vancouver Library by ROSE MARIE JONAS and Mr. and Mrs. RICHARD GRAFTON, members of C.C.G.S.

The microfilmed copies of the "VANCOUVER REGISTER" begin with Volume 1 Number 4, Saturday, October 7, 1865. The first three editions have apparently become lost. Items of local interest for genealogists and historians have been copied. The [] following the articles indicate [page #, column #].

Saturday, April 13, 1867 - Vol. 2 #30

ORDINANCE #35 TO ORGANIZE THE FIRE DEPARTMENT OF THE CITY OF VANCOUVER
.....April 1, 1867. The foregoing Ordinance was read in the Council
the third time, and passed. G. W. DURGIN, Pres't of the Con'cl.
J. M. FLETCHER, Clerk of the Con'cl.
Approved, April 5, 1867, ABEL G. TRIPP, Mayor.
Recorded this 11th day of April, 1867, JOHN F. SMITH, City Recorder.
[2/4]

Klickitat County Union Convention

According to public notice the Union men assembled at Rockland, on the 10th of April, to select a delegate to represent Klickitat and Yakama counties in the Union Territorial Convention to be held at Vancouver on the 10th day of April.

On motion AMOS STARK was elected Chairman and JAMES H. JENKINS Secretary.

On motion of Mr. JENKINS, WM. CONNELL was elected a delegate to the Union Convention at Vancouver, and it was resolved that the delegate be instructed to vote for Judge J. E. WYCHE for Delegate to Congress and to use all proper efforts for his nomination.

On motion the proceedings of this Convention be published in the VANCOUVER REGISTER and Dalles Mountaineer.

On motion the meeting adjourned.

A. STARK, Chairman

J. H. JENKINS, Secretary

April 10, 1867

[2/1]

A Road Supervisors election is announced to be held to-day at the house of W. STEVENS' in Vancouver. Mr. WILLIAM BARNES announces himself as a candidate for the position. He is an older and experienced hand in that business.

W. GOLDBECK is also out as a candidate.

Mr. WILLIAM BARNARD was elected ROAD SUPERVISOR of Road District No. 1 which comprises a portion of this town.

PROCEEDINGS OF THE CLARK CO. UNION CONVENTION

The Convention met at the Metropolis Hall, Vancouver, on Monday, April 8th, and was called to order by H. COCHRAN, Esq., Chairman of the Central Committee.

On motion J. M. FLETCHER was elected Chairman and H. G. STRUVE was elected Secretary.

Mr. HENRY moved the appointment of a Committee on Credentials, one from each precinct, except Fern Prairie, in which precinct there were two sets of delegates, each claiming seats.

Motion carried and the following committee was appointed by the chair: S. C. ACHILLES, GEO. THING, J. BARTLETT, M. WEBB, E. M. HALL, S. D. MAXON, E. GIBBONS.

Mr. WHIPPLE moved the appointment of a committee to prepare and submit an order of business for the Convention. Carried.

The following committee was appointed: S. R. WHIPPLE, O. P. HENRY, JACOB WINTLER, G. E. VENATTI, A. ARMSTRONG.

Mr. LOCKWOOD moved the appointment of a Committee on Resolutions. Carried, and the following Committee was appointed: R. M. LOCKWOOD, W. R. TURNBULL, G. W. PROEBSTEL, A. G. TRIPP, F. SHUBERT.

Mr. MAXON moved that the Convention take a recess until 1 o'clock, p.m. Motion carried.

Convention reassembled at 1 o'clock p.m. Mr. FLETCHER in the chair.

Mr. President: Your Committee would respectfully submit the following, as the order of business for this Convention:

- 1st. Report of Committee on Credentials.
- 2d. " " Resolutions.
- 3d. The election of three (3) delegates to the Territorial Union Convention.
- 4th. Nomination of officers in the following order: Two Joint Councilmen, three Representatives, one Prosecuting Attorney 24 Judicial District, one Sheriff, one Probate Judge, three County Commissioners, one County Auditor, one County Treasurer, one School Superintendent, one Coroner, one Assessor, one Surveyor.

5th. Nominations for Precinct officers to be made respectively by the delegates from the different precincts.

6th. Election of a County Central Committee.

Respectfully submitted,

S. R. WHIPPLE

Chairman of Committee

Mr. KNIGHT moved to adopt the Report. Motion carried.

Mr. MAXON submitted the report of the Committee on Credentials, reporting the following named gentlemen entitled to seats in the Convention:

Vancouver Precinct - J. H. GODDARD, J. M. FLETCHER, A. G. TRIPP, L. MATTHEWS, J. E. C. DURGAN, I. I. LANCASTER, S. R. WHIPPLE, W. R. TURNBULL, S. C. ACHILLES, L. FARNSWORTH.

Preston Precinct - S. D. MAXON, A. ARMSTRONG, S. KNIGHT.

Washougal Precinct - J. WINTLER, E. GIBBONS, H. STRONG.

Lackamas Precinct - E. M. HALL, G. W. PROEBSTEL, G. E. VENATTI.

Fern Prairie Precinct - E. D. DOLE, J. PROEBSTEL, S. W. BEALL.

Patterson Precinct - GEO. THING, F. SHUBERT, O. P. HENRY.

Pollock Precinct - J. BARTLETT, R. M. LOCKWOOD, JOS. KELLY.

Lancaster Precinct - M. WEBB, A. B. CILLY, A. GILSON by M. WEBB proxy.

Mr. HENRY moved the adoption of the report. Motion carried, ayes, 20 - noes, 2.

Mr. LOCKWOOD reported the following from the Committee on Resolutions:

Whereas, It is customary for political Conventions to express their political sentiments, etc., therefore

Resolved, That the Union Convention of Clark County assembled at Vancouver, declares itself emphatically in favor of the reconstruction policy of Congress - decidedly preferring it to that other, popularly known as "my policy."

Resolved, That the deplorably bad financial condition of our County, calls upon us to provide a cure, so far as the same may be effected by the nomination of honest, faithful and competent men, whereto we pledge our undivided support.

Resolutions adopted on motion of Mr. BYALL.

Mr. HIRAM STRONG from Washougal Precinct being absent, Mr. E. GIBBONS was instructed to cast his vote.

The following is the result of the balloting for delegates:

S. D. MAXON received	28	votes.
R. M. LOCKWOOD "	20	"
J. M. FLETCHER "	18	"
JAS. A. ORR "	12	"
LEWIS LOVE "	2	"
J. BARTLETT "	1	"

Messrs. MAXON, LOCKWOOD and FLETCHER, having each received a majority of all the votes cast were declared duly elected delegates.

Mr. FARNSWORTH introduced the following resolution:

Resolved, That this Convention concedes to the Union men of Skamania, Clickitat and Yakima counties, the right to nominate a Joint Councilman and that the Union party of Clark county will cordially support the person selected for that position by the Union men of the aforesaid counties.

Resolution unanimously adopted.

Mr. WHIPPLE introduced the following resolution:

Resolved, That H. G. STRUVE is the choice of this Convention for Councilman in the lower Council District and that the delegates from the counties of Cowlitz, Wakiakum and Pacific to the Territorial Union Convention are earnestly requested to ratify this nomination.

The resolution was unanimously adopted.

Mr. DURGAN moved that all the other officers be nominated by ballot and that a majority of all the votes cast should be necessary to constitute a nomination. Carried.

Messrs. KNIGHT, HALL and BEALL were appointed as tellers.

Nominations were then made for Representatives and the following as the result of the final balloting:

G. W. JONES received	17	votes
H. COCHRAN "	19	"
O. P. HENRY "	18	"
A. G. TRIPP "	10	"
J. BARTLETT "	12	"
A. ARMSTRONG "	10	"
S. KNIGHT "	3	"
S. C. ACHILLES "	1	"
Scattering "	3	"

Messrs. JONES, COCHRAN and HENRY having each received a majority of all the votes cast, were declared duly nominated for the office of Representatives.

Mr. JACOB WINTLER introduced the following resolution:

Resolved, That our delegates to the Territorial Union Convention are hereby authorized to nominate a suitable candidate for Prosecuting Attorney, in conjunction with the delegates in said Convention from the 2d Judicial District, W.T.

Resolution unanimously adopted.

Mr. G. W. DURGAN was nominated for Sheriff.

On motion Mr. DURGAN was invited to come within the bar and define his position. Mr. DURGAN came forward, defined his political status and successfully refuted certain charges made against him. His frank and candid remarks elicited much applause and upon motion the rules were suspended and Mr. DURGAN was unanimously nominated by acclamation as candidate for Sheriff.

Messrs. DOUTHIT, DOLE and MAULSBY were placed in nomination for Probate Judge.

The following was the result of the balloting:

	1st ballot	2d
L. T. MAULSBY	6	3
LEVI DOUTHIT	12	16
E. L. DOLE	8	10
M. R. HATHAWAY	4	2

Upon the second ballot Mr. DOUTHIT having received a majority of all the votes cast, was declared duly nominated.

The balance of the ticket was filled up as follows, each of the candidates having received a majority of all the votes cast:

For County Commissioners - JOHN PROEBSTEL, LEWIS LOVE, F. LEE LEWIS.
For County Treasurer - DAVID SCHUELE.
" School Superintendent - DAVID WALL.
" Assessor - SENECA KNIGHT.
" Auditor - LEVI FARNSWORTH.
" Coroner - M. SHEA.
" Surveyor - ALEX M'ANDREW.

The Vancouver precinct delegation then reported the following nominations for precinct officers:

For Justices of the Peace - J. M. FLETCHER, J. F. SMITH.
For Constables - JOHN H. WALCH, M. DAMPHOEFFER.

The Convention then proceeded to the election of a County Central Committee for the ensuing two years with the following result:
H. G. STRUVE, GEO. THING, JOSEPH GAITHER, I. Q. AUSTIN, E. M. HALL, SENECA KNIGHT, JOHN PROEBSTEL, E. GIBBONS.

After divers and sundry speeches made by delegates and others, the Convention adjourned.

JOS. M. FLETCHER, Chairman

H. G. STRUVE, Secretary

[2/2-3]

Saturday, April 20, 1867 - Vol. 2 #31

MARRIED.....At the Union Hotel in this City, by J. F. SMITH, City Recorder, April 16 1867, Mr. W. F. CRAIG to Mrs. ELIZABETH BASH, both of Marion County, Oregon.

DIED.....In New York City, in the latter part of January, 1867, Mr. CHARLES N. ALVORD, for many years Paymasters Clerk at Fort Vancouver. He died as he lived, that noblest work of God - "an honest man". Peace to his ashes. [3/1]

Mr. G. W. MARTIN and G. W. BRADY have been brought out as candidates for Justice of the Peace and Constable. [3/1]

ERRATA - We unintentionally cast a stigma upon the fair fame of a gallant regiment in our account of the robbery of the 7th inst. The man MARTIN, who is supposed to be the robber and who, by the way, has recently served out a year's imprisonment for a similar offense, belongs to the 23d Infantry instead of the 8th Cavalry, as stated. We are most happy to make this correction, as the Eighth are a very sensitive set of men, and proud of their good name. [3/1]

A MOVE IN THE RIGHT DIRECTION - The citizens of this county have long felt the loss of a hardware establishment in this city, and the inconvenience and delay arising from having to send to Portland for the simplest article in that line, has made such an establishment a necessity. We are pleased, therefore, to find that our townsman C. H. HUNDER, has taken steps to supply this want, and is now in receipt of the largest and finest stock of hardware ever landed in this city. [3/1]

A DISTINCTION WITHOUT A DIFFERENCE - Although the old firm of JONES, TURNBULL, & Co., are no more, and a consequent change in the style of the firm to that of TURNBULL & LEAHY, yet their patrons will discover upon trial that there is no difference in the quality of the commodities they offer for sale. [3/1]

GENEROUS - Mr. FREEMAN has presented No. 3's with \$51.75 coin, the proceeds of a cake raffle, for which he has received the unanimous thanks of the Company. [3/1]

EARLY CLARK CO. PEOPLE

THE BOWMANS AND VAN ATTAS PIONEERS OF BRUSH PRAIRIE

On 1 March 1874 a marriage took place in the Brush Prairie Baptist Church which united two of Clark County's earliest pioneering families. The groom was Eli Cyrus Van Atta and his bride was Elmarine Jane Bowman. The Bowman were one of the first families to homestead in the Brush Prairie district, moving there from California in 1860, after crossing the plains from Missouri in 1853 when Elmarine Jane was only a babe in arms.

Elmarine's father, Merritt Hoblet Bowman, was born on 22 September 1826 in Sangamon County, Illinois, the eldest of eight children of Hiram Bowman (1795-1877) and his wife Isabel Hoblet (1796-1854) who were married in Green County, Ohio on 5 October 1820. Hiram, whose father Hiram Snr. had come to America in 1772 with the British Army, was born in New Jersey and moved to Illinois after his marriage. He became a Baptist minister, eventually losing his sight "from studying the Bible by candlelight and the fireplace". Hiram Bowman and his family later moved to Jackson County, Missouri where he continued preaching literally until the day he died. His wife, Isabel Hoblet Bowman, was one of 99 grandchildren of Johannes Michael Hoblet, a German immigrant who fought in the Revolutionary War. Isabel was born in Kentucky, the third of 10 children of Boston Hoblet, (1774-1859) and Sarah Middleton Hoblet (1771-1831).

On 18 December 1851 Merritt Bowman married Madora Williams in the township of Sni-a-Bar, Jackson County, Missouri. Madora was born on 22 December 1832 at Jackson County, the eldest child of Bluford Williams and his wife Elizabeth Lewis who were married in the same county on 6 February 1832. Merritt and Madora Bowman's first child, Elmarine Jane, was born on 21 January 1853. Later that year the Bowmans and several other families set out from Kansas City, Missouri on the long and arduous trail west, hoping to carve a better future from an unknown frontier. Their wagons were drawn by teams of oxen and the 2000 mile journey took 6 months to complete.

The hardships of the trail were appalling and many turned back or died in the attempt, but the Bowmans pressed stoically on through the Platte River Valley of Nebraska, across the plains and into the Rockies at South Pass. An Exhausting pace of 15 miles a day, often on foot, was required in order to cross the last mountain range before the autumn snows. In Idaho the Bowmans left the main trail to Oregon and headed south-west on the California Trail, travelling along the Humboldt and over the Sierra Nevada. At length Sutter's Fort on the Sacramento was reached and the weary pioneers had arrived at their journey's end.

Merritt and Madora Bowman remained in California 7 years and two more daughters were born to them during that time. In 1860 however, they decided to move north and after settling briefly at Woodland in Washington, they finally established a homestead at Brush Prairie. A fourth daughter and three sons were born to them in Clark County where they were to remain for the next 40 years. By the turn of the century 3 of the Bowman children were living in or near Portland, Oregon and it was there that Merritt and Madora moved in their declining years. Madora died on 20 May 1902 in her 70th year, shortly after the couple celebrated their Golden Wedding Anniversary and was buried in the fourth Plain Cemetery, Orchards, Washington. Soon after, Merritt Bowman

visited Missouri for 18 months and on returning to the West, resided with his second son Hiram at Falls City, Oregon until his death on 19 July 1912 at the age of 85. He was buried beside his wife in the Fourth Plain Cemetery, though only Madora's grave bears a headstone.

Eli Cyrus Van Atta was the eighth child and eldest surviving son of Gearshum Van Atta and Sarah Palmer Van Atta who were married in Knox County, Illinois on 5 October 1833. Gearshum was the son of James Van Atta and his wife Elizabeth Hull and was born in Beaver County, Pennsylvania on 2 June 1813. At the age of 18 Gearshum enlisted in Captain Pike's Company of Rock River Rangers Illinois Volunteers and fought gallantly in the Black Hawk War. The following year, when trouble with Black Hawk flared again, Gearshum re-enlisted with the Illinois Volunteers under Captain Peter Butler, being honourably discharged in September 1832 at the close of the war.

Sarah Palmer was the sixth of nine children of William Palmer (1774?-1840) and his wife Jane Gill (1780?-1846) and was born in Union County, Indiana on 13 February 1819. Gearshum and Sarah Van Atta were to have 15 children between 1834 and 1863, though only 3 sons and 6 daughters survived infancy. Their early married life was spent in Henderson County, Illinois where their son Eli Cyrus was born on 8 December 1847. However, in 1849 the Van Attas moved to Sugar Grove in neighbouring Mercer County, where they took a property near their old friend John Jay Clark. Soon after, Clark, a widower, married the Van Atta's eldest daughter Elizabeth.

In 1854 John Jay Clark decided to join his older brother who had settled in Oregon two years before and the Van Attas agreed to accompany them on that great undertaking. Accordingly Gearshum and John Jay sold their farms to the county and the two families set out on 1 April 1854 with three covered wagons, several yoke of oxen and four cows. They crossed the Mississippi by ferry, taking the Mormon Trail through southern Iowa and across the Independence, Missouri. From there they followed roughly the same route as the Bowmans the year before, but continued west along the Snake River Plain of southern Idaho. Passing to the north of Mt. Hood and descending from the Cascades they turned south at Oregon City, finally making their home near Harrisburg in Oregon's Willamette Valley. It was 4 September and the journey had taken 5 month's.

Gearshum and Sarah Van Atta were to remain in Linn County, Oregon for the next 9 years until the summer of 1863 when they moved north with the Clark's, crossed the Columbia into Washington and settled at Brush Prairie. On 1 August 1863 the Clark Brothers and Gearshum, who had been a Deacon of the Baptist Church since 1844, were responsible for the establishment of the Salmon Creek Baptist Church. Later known as the Brush Prairie Baptist Church, it has witnessed several changes to its buildings but remains the oldest Baptist church in continuous existence in the state of Washington.

Gearshum Van Atta died on 28 May 1896 shortly before his 83rd birthday, lamented by his numerous family, neighbours and friends alike. He was buried in the Brush Prairie Cemetery in land which he and Sarah had deeded to the county as a burying ground in 1875. 15 children, 71 grandchildren, 67 great grandchildren and 2 great great grandchildren, a total of 155 descendants, were the result of the union of Gearshum and Sarah Van Atta at the time of his death. Like her husband Sarah achieved her four score years. She died on 7 April 1901 at the home of her youngest daughter Irene and was buried near Gearshum in the Brush Prairie Cemetery, where their graves remain intact despite the ravages of time.

Eli Cyrus Van Atta, following his father's example became a farmer, his future wife Elmarine Jane Bowman taking up teaching in Clark and Klickitat Counties until their marriage in 1874. 7 sons and three daughters were born to Eli and Elmarine all of whom not only grew to adulthood, but were to be

noted for their longevity, seven becoming octogenarians or close thereto.

The second of these children was my grandmother, Celia Alice Van Atta, who was born at Brush Prairie on 8 March 1877. At the age of 23, which was considered advanced years by the standards of the day, she married Rupert Harrison on 12 June 1900 at the Brush Prairie Baptist Church. Rupert, a school teacher, was 14 when his family emigrated from England to the United States in 1885. On 23 April 1901 their first child, Wilfred John Harrison, my father, was born at Brush Prairie and the following year the Harrisons emigrated to New Zealand.

[next page....]



THE VAN ATTA FAMILY IN 1902

Back row (standing, left to right):

Rupert Harrison, Arlie Roy Van Atta, Albert Edward Green, Elmarine Jane Bowman Van Atta, Letha Jane Van Atta Green holding Laurine Halcyon Green, Eva Rebecca Van Atta Cox, Merritt Gearshum Van Atta, Jessie Mae Body Van Atta, Willis Adrian Van Atta, Volney Vincent Van Atta.

Middle row (seated, left to right):

Celia Alice Van Atta Harrison with Wilfred John Harrison at her knee, Eli Cyrus Van Atta, John Henry Cox, Clyde Bowman Van Atta.

Front row (seated on the ground, left to right):

Ellis Van Atta, Walter Osa Van Atta, Bernice Elmarine Cox, Harry Eldred Cox.

The accompanying photograph of Eli and Elmarine surrounded by their entire family was taken in 1902, shortly before the Harrisons departed for the antipodes. Eli disapproved of his daughter's plans to emigrate and at first refused to pose for the family picture. Finally the patriarch bowed to pressure and lent his presence, but only on the understanding that he would "read his Bible while the photograph was being taken".

Homesteading first in the Hokianga region of the North Island of New Zealand with other members of the Harrison family, Celia Alice Harrison later moved to Auckland with her husband and four children to enable Rupert to further his teaching career. In 1927 Wilfed Harrison again emigrated, this time to West Australia in search of employment as a surveyor. Seven years later he married, West Australia becoming his permanent home and the birthplace of his three children, a long way indeed from his native Washington. Celia Alice Harrison was a much travelled lady of Washington and Oregon and three times visiting her elder son in West Australia, the last occasion being in 1961 when she was 84. She died at Auckland, New Zealand on 9 April 1965 in her 89th year, living longer than any of her grandparents, parents, brothers or sisters.

Following the death of his mother in 1901, Eli and Elmarine Van Atta retired to McMinnville, Oregon where Eli became a Deacon of the local Baptist Church. He died on 5 May 1915 aged 67 and was buried in the Brush Prairie Cemetery, in the county where he had been a respected citizen for 38 years. Elmarine has been remembered by one of her granddaughters as "a jolly, plump little lady", who was blessed with boundless energy which sustained her through the births of 10 healthy children between 1875 and 1895. At the time she acquired a certain fame in the Brush Prairie neighbourhood as a midwife, capably presiding over the delivery of many children in between her own numerous confinements. Three of her sons fought with the Allied Armies in Europe during the First World War and all returned safely home.

Elmarine continued to reside at McMinnville after Eli's death, but in 1931 moved to the home of her son Willis at Lake Shore, Vancouver. There she died on 18 November 1932, in her 80th year and was buried with her husband in a joint grave in the Brush Prairie Cemetery. Elmarine was survived by 9 children, her eldest son Clyde having died tragically in 1909 in a railway accident, 32 grandchildren and 28 great grandchildren.

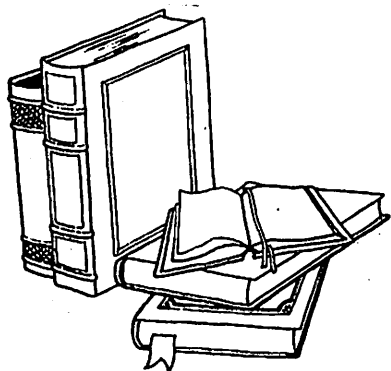
Of the brothers and sisters of Eli Cyrus Van Atta who survived infancy, six spent the greater part of their lives in Clark County and are buried in the Brush Prairie Cemetery near their brother and parents. They were Elizabeth (1834-1929), who married Eslum M Hall; William (1851-1919), who in 1871 married Matilda, daughter of Mr & Mrs Uriah Groat, also pioneers of the Brush Prairie district; Phoebe Caroline (1858-1937), who in 1873 married Robert V. Cresap, a pioneer of Battle Ground; Lincoln Gearshum (1860-1890), who married Mary Hiley; and Irene Rebecca (1863-1946), the only one of Gearshum and Sarah Van Atta's children born in Clark County, who married George Nelson Usher. The remaining two sisters were Jane (born 1836), who married William Poe and died in Oregon and Rosetta Sarah (born 1856), who married Samuel Van Atta (no relation) and died in Kansas.

Submitted by Rex Arthur Harrison

Floreat Park

West Australia

(Great grandson of Eli Cyrus and Elmarine Jane Van Atta)



BOOK REPORTS

An Index to the Will Books and Intestate Records of Lancaster County, Pennsylvania 1729-1850. Baltimore: Geneal. Pub. Co. 1987. Presented by Lois Lehl. Gives over 1500 names with year, book, Vol., page. Includes historical background and bibliography.

Bolton, Charles Knowles. Scotch Irish Pioneers in Ulster and America. Baltimore: Geneal. Pub. Co. 1986. Presented by Lois Lehl. Historical background with many names in Ireland and the colonies. Appendices, Indexed.

Corning, Howard McKinley. Willamette Landings. Portland, OR: Oregon Historical Society. 1973. Presented by Richard Grafton. A story of early Willamette pioneers and towns. Good historical reading. Illustrated. Indexed.

Early Ohio Settlers. Purchasers of Land in Southwestern Ohio, 1800-1840. Compiled by Ellen and David Berry. Baltimore: Geneal. Pub. Co. 1986. An alphabetical listing of original purchasers of federal land. 50,000 names are listed with year, date, residence. Cincinnati was the terminus of several migration trails and the federal land office there served southwestern Ohio and eastern Indiana.

Early Pennsylvania Births, 1675-1875. Compiled by Charles Fisher. Presented by Lois Lehl. Baltimore: Geneal. Pub. Co. 1986. 6000 names with parents, baptism date. Church baptism records from Snyder, Union, Northumberland, Berks counties.

Early Settlers in Lyman County. Presho, SD: Lyman County Historical Society. 1974. Presented by Mildred Finley. Large 500 page hard-bound book with history, early settlers of the 1880's towns, churches, schools. Most of the book is filled with stories about families. List of brands with owners' names. Bound into the book is Lyman County Pioneers 1885-1968. Pictures. Each section indexed.

Familia. Ulster Genealogical Review. Australia 1788-1988. Presented by Bill Armstrong. Vol. 2, No. 3. Belfast: Ulster Historical Foundation. 1987. Twenty articles about Irish migration to Australia. Not indexed but some names included, as James Glen Wilson, John White, Sir Samuel Wilson, John King, Timothy Eaton, Fr. Willie Devine.

Family Record of Jehu Hall. Compiled by Estilla Toll. Presented by Murreal Short. (P.O. Box 94, Coupeville, WA 98239). Jehu Hall, born 1805 in North Carolina. Descendants followed for seven generations, some to LaCenter, Washington, but others to various states.

Genealogical Research on San Angelo, Texas. Lists of available materials listed by state. Presented by the family of Gertrude Hamblin.

Haddock, Hugh and Orpha. Legends of the Haddock Family. Wheaton, Illinois: Gerald Haddock. 1976. Ancestors were fishermen of British Isles. In 1764 John Haddock, Sr. was a planter in Pitt Co., North Carolina. About 1810 descendants moved west or south. Historical descriptive narrative. Large index including many surnames other than Haddock.

A History of the Woodland Community 1850-1958. Woodland, WA: Woodland Community Development Study. 1958. Presented by Rose Marie Harshman. Very fine compilation of history articles. Over 100 pages are devoted to "Early Families in the Woodland Community."

Index to the 1850 Census of California. Compiled by Alan P. Bowman. Baltimore: Geneal Pub. Co. 1972. Alphabetical names within 24 counties with age and birthplace.

Indiana Militia in the Black Hawk War. By Carie Loftus. 500 names with rank and regiment.

Jordan, Jerry Wright. Cherokee by Blood. Records of Eastern Cherokee Ancestry in the U.S. Court of Claims 1906-1910. Vol. 1. Applications 1 to 1550. Bowie, MD: Heritage Books. 1987. Genealogical "story telling" by Indians of 1906 claiming to be members of the Eastern Cherokee Tribe or descendants. Mr. Guion Miller reported in 1909 that 45847 applications were on file. Indexed.

Index of Maryland Colonial Wills 1634-1777. Compiled by James Magruder. Baltimore: Geneal. Pub. Co. 1986. About 16000 names listed with county, volume, and page, so copies could be ordered.

Lenzen, Connie. The Huiras Family: In Bavaria and America. Book IV: John Baptist's Story. Portland, OR 97212: Lenzen, 3033 NE 35th Ave. CCGS member. Pub. by CCGS. 1988. A fine book with maps, photos, narrative, index. Ancestry goes back to Andrew Huiras, b. 1800 in Bavaria; d. 1866 in Leavenworth MN. Chapters included on these surnames: Girg, Augustin, Honetschlager, Stadfield, Holm.

Lineages of Members of the National Society of the Sons and Daughters of the Pilgrims. Baltimore: Geneal. Pub. Co. 1988. Presented in memory of Chester Hector by J. Andrews, E. Blessinger, R. Harshman, B. Krause, H. Beseda, S. Rask, T. Scott, C. Wastradowski. Vol. I to Jan. 1, 1929; Vol. II: 1929-1952. Vol. I includes more dates and relationships. Vol. II is done in a concise style but includes birth-death dates and spouse and references. Research should be done in both volumes.

Map guide to the U.S. Federal Censuses 1790-1920. By William Thorndale and William Dollahide. Baltimore: Geneal. Pub. Co. 1987. Maps of all states showing counties and historical changes showing boundaries 1790-1920. Added notes give essential facts. Indexed.

McArthur, Lewis A. Oregon Geographic Names. Oregon Historical Society: Binford & Mort. 1952. This third edition contains nearly 4000 place names with history of each name and references for further information. Presented by Mary Micshek.

Missouri Cousins by Maxim Coppage III. Hartford, KY: McDowell Pub. 1978. Presented by Doris Wastradowski. Fifty counties with names, history and a variety of genealogical data. Indexed.

North Carolina Land Grants in South Carolina. By Brent H. Holcomb. Baltimore: Geneal. Pub. Co. 1986. Concerning an area where the border between the two states had been in controversy. Involves counties: Marlboro, Chesterfield, Lancaster, York, Chester, Union, Cherokee, spartanburg, Greenville, Laurens, Newberry, Craven, Berkeley, St. Marks or St. Davids Parish, Bladen, Anson, Mecklenburg, Tryon.

North Carolina Taxpayers 1701-1786. Compiled by Clarence E. Ratcliff. Baltimore: Geneal. Pub. Co. 1986. About 27000 names listed with year and county. A chart leads to the source.

Passengers and Ships Prior to 1684. Penn's Colony, Vol. I. Welcome Society of PA. 1970. 200 pages plus index discuss and list ships and history, passengers.

Pennsylvania Marriages Prior to 1790. Baltimore: Geneal. Pub. Co. 1984. Presented by Lois Lehl. 13000 names with dates.

Post Bicentennial. Cenequa Bicentennial Issue. 1976. Camas-Washougal Post Record. 125 year history of Camas-Washougal with pictures and articles. Cover pictures show Richard Howe, Hudson Bay Co. seaman, and Betsey Ough, Cascades Indian Princess. Presented by the family of Gertrude Hamblin.

Saline County, Kansas 1865 Census; Complete Ottawa County, Kansas Existing 1865 Census. Salina, KS: Smoky Valley Geneal. Society. 1987. Presented by Bonnie L. Stewart. Indexed.

San Angelo, Texas, Genealogical and Historical Society. Membership list with surnames each is searching, plus research aid lists. Presented by the family of Gertrude Hamblin.

Scandinavian Queries compiled by Anne Long (1988) at Route 2, Box 671, Grangeville, Idaho 83530. Presented by the compiler. Scandinavian researchers, find this in the vertical file. 25 pages of queries. Indexed.

Seagraves, Faye S. Genealogy of Seagraves, Sampson and Kindred Lines. Presented by Alice and Homer Townsend. Coeur d'Alene, ID 83314, F.S. Seagraves, E. 2905 Fernan Hill Rd. 147 pages with ancestry going back to Sir John de Seagrave who died 1231, Leicestershire. Included are stories of how she searched.

Schweitzer, George K. Georgia Genealogical Research. Knoxville, TN: Schweitzer. 1987. Maps, history, types of records, record locations, research procedures.

Schweitzer, George K. Pennsylvania Genealogical Research. Knoxville, TN: Schweitzer. 1986. Concise, detailed advice to research in Pennsylvania.

Schweitzer, George K. War of 1812 Genealogy. Knoxville, TN: Schweitzer, 7914 Gleason C-1136. History of the war with maps, then many tips to the researcher to find genealogical data.

1770-1790 Census of the Cumberland Settlements. Davidson, Sumner, and Tennessee Counties (In What is Now Tennessee) Compiled by Richard Carlton Fulcher. Baltimore: Geneal. Pub. Co. 1987. Purpose is to identify as many families as possible in the western North Carolina settlements along the Cumberland River from which Davidson County was formed in 1783.

Skamania County, Washington. Births 1893-1894. By Daphne Ramsey. Vancouver, WA CCGS. 1987. Indexed. Includes probate and other court matters.

Skamania County, Washington Cemetery Records. By Daphne Ramsey. Vancouver, WA: CCGS. 1987. Records from 13 cemeteries with information about others too. Additional reading such as "Stories the Tombstones Do Not Tell."

Wade, Daraleen Phillips. Every Name Index to Book of Remembrance of Marion County, Oregon. Pioneers 1840-1860. A History of the Silverton Country. Sublimity: The Story of an Oregon Countryside. These three books are used often for genealogical research and were published some years ago by Sarah Hunt Steeves, Robert Horace Down, and Mark Schmid. This index should add to the usefulness of these historic gems. Pub. 1988, Salem, OR D.P. Wade, 4305 Toni Ave, 97303.

Wade, Daraleen Phillips. Marion County, Oregon Newspaper Abstracts. The Stayton Mail Dec. 1896 to June 1908. Personal items abstracted from the local news items selected to include names, relationships, dates, of interest to family historians. Every name index. Salem, OR: available from compiler at 4305 Toni Ave. N., 97303.

The West Texas Collection Bibliography. Compiled by Myra L. Kujawa. Pub. by San Antonio, TX, San Angelo Genealogical Historical Society 1984. Presented by the family of Gertrude Hamblin. List of holdings of Porter Henderson Library of the Angelo State University.

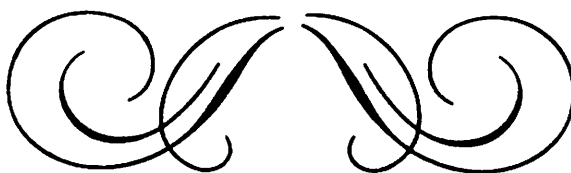
Wiltshire, Betty Couch. Marriages and Deaths from Mississippi Newspapers. Vol. 1: 1837-1863. Bowie, MD: Heritage Books. 1987. Abstracted from newspapers of the northern half of Mississippi. A few other items included. Indexed.

Woolf Clan. As remembered by Deborah Woolf Knapp. Presented by Lesla Scott. 345 descendants listed from George B. and Sarah D. Woolf, without dates. Seven chapters follow, dated 1932 to 1938 but memories go back to 1869 in Des Moines. She tells of moving from Iowa eventually to Oregon by covered wagon. Good reading. Vertical file.

MICROFILM: Great Register of Voters. Los Angeles County, 1920, pt. 2.

MICROFICHE: Census:

- 1848/1850 Canada West, Ontario
- 1860 Delaware Census Index
- 1860 Florida Census Index
- 1890 Louisiana Census Index
- 1890 Maryland Census Index
- 1890 Minnesota Veterans Census Index
- 1890 Missouri Veterans Census Index
- 1910 Nevada Census Index
- 1910 Wyoming Census Index



W A R N I N G

A word of warning to genealogists who keep valuable and irreplaceable photos in the new vinyl (plastic) page albums.

PVC or vinyl pages contain plasticisers, solvents and residual catalysts that volatilize. The volatile elements cause the most serious damage when they are in direct contact with photos, such as photo album pages, and can even cause damage to photographic materials by contaminating the air in their immediate vicinity

The contaminating effects of Polyvinyl Chloride (PVC) are well documented.

For more information on PVC damage to photographic materials see:

Modern Photography, Dec. 1984

N.Y. Times "On Making Prints Last" by Sandy Sorllen, Jly. 22, 1984.

Eastman Kodak's booklet "Preservation of Photos." 1979.

Popular Mechanics, May 1985.

There are good Photo Albums that contain no PVC's; be sure to look on the labels before you buy!!!

Richard N. Grafton

VOLUNTEER SPOT-LIGHT



Bertha Louise Krause

The Marine Corps slogan "*We need a few good men,*" could also apply to Clark County Genealogical Society. In the case of our President, we fill the need quite well with "*one good woman.*" Bertha Krause is known to be a working President, always actively participating in the projects and events of our society.

Bertha Louise Schmidt, the daughter of Henry J. Schmidt and Johanna Justina Tschetter, was born on the family's homestead in Dodson, Montana, on 26 December 1916. Her father had immigrated to the United States from Russia in 1900, and her mother was a descendant of Germans from Russia who had arrived in the 1870's. She grew up in a large family of twelve children; there were six girls and six boys. Her grandfather passed away in 1920, and Henry Schmidt and family went to Yorkton, Saskatchewan to settle his fathers affairs. Although she is no longer fluent in German, Bertha didn't speak English until she started school. The Schmidts remained in Canada for several years

prior to coming to Portland, Oregon around 1924, and they moved to Vancouver in 1932.

Her working career began during the Great Depression and Bertha was employed outside the home all of her adult life. In 1972, she retired after working at Bemis Bag for twenty-four years. On 13 April 1988, Bertha and her husband Don, who live on a farm near Ridgefield celebrated their 20th anniversary. She has three children, all born and living in Vancouver: Rose Marie Chenette (Mrs. John Harshman) born 24 August 1935, Donald Roy Chenette born 16 August 1937, Richard Gerald Jenkins born 22 Nov. 1942. In 1982 her youngest son, John Allen Jenkins, passed away in Vancouver at the age of 38. There are eight grandchildren: Steven Harshman, Theresa Harshman (Mrs. Brad Peru), Stephanie Jenkins (Mrs. John Varga), Michael Jenkins, Sandra Chenette, Brandon Jenkins, Tiana Jenkins, and two great grandsons: Jonathan Peru and Christopher Varga.

Joining C.C.G.S. in 1977, Bertha will conclude her second term as President in June. She served as Directory Editor for two years, processed library accessions for six years, was on our cemetery recording project throughout its entire course, has been a member of the printing committee for the past seven years and now houses the society print shop in her home. She has worked at numerous workshops, seminars and other society events.

Other than genealogy her many hobbies include: sewing, ceramics, bowling and salmon fishing. Bertha has published *The Goedker Tree and Its Many Branches* and is currently working on the manuscript for the Schmidt family history, aided by a Macintosh SE computer that she recently purchased.

Surnames and areas she is researching:

Schmidt - SD, NE, Saskatchewan, Can., Russ.-
Daffe - Can., Russ. - **Tschetter** - S.D., Manitoba and Saskatchewan, Can., Russ. - **Fast** - Can., Russ. - **Waldner** - Can., Russ. - **Kopfenstein** - Can., Russ. - **Bercier** - Manitoba, Can. - **Krause** - MN, Bavaria

ANCESTOR CHARTS



ANCESTOR CHART of Mary L. EMERSON Mivshek
4212 NE 18th Ct, Vancouver, WA.

1. EMERSON, Mary Lucille b. 2 Apr 1939, Woodland, WA; m 27 Oct 1962, Vancouver, WA. JACK F. MIVSHEK.
2. EMERSON, Jack E. b 28 Jul 1902, Dunlap, IA; m 19 Aug 1935, Kelso, WA; d 22 May 1972, Vancouver, WA.
3. STRONG, Lucille Mary b 30 Apr 1911, Woodland, WA.
4. EMERSON, Solon E. b 10 Sep 1857 Canada, ENG; m 2 Dec 1891, Dunlap, IA; d 24 Nov 1919, Woodland, WA.
5. CUNARD, Mida A. b 22 Sep 1870, Cass Co, IA; d 30 Mar 1960, Vancouver, WA.
6. STRONG, Willard L. b 15 Sep 1873, Diamond, UT; m 1905, Portland, OR; d 26 Jan 1974, Vancouver, WA.
7. WEBB, Awilda J. b 6 Apr 1878, Woodland, WA; d 17 Feb 1936, Vancouver, WA.
8. EMERSON, Jasper E. b Canada, ENG.
9. POPE, Polly b Canada, ENG.
10. CUNARD, Aaron b PA.
11. _____, Mary b PA.
12. STRONG, Ezra b 4 Apr 1820, Willink, NY; m 2 Jun 1861, Springville, UT.
13. NISONGER, Mary b 12 Mar 1840, OH; d 1885, Woodland, WA.
14. WEBB, Moses b 14 Feb 1835, Scott Co, IL; m 16 Mar 1874; d 8 Oct 1897, Woodland, WA.
15. DAVIS, Mary Ellen b 1 Jul 1856, Guthrie Co, IA; d 24 Feb 1936, Vancouver, WA.
24. STRONG, Ezra b 26 Jun 1788, nr Albany, NY; m 19 Nov 1814; d Apr 1877.
25. LOWELL, Olive.
28. WEBB, Benjamin.
29. ELLEDGE, Lydia b 23 May 1813, Clark Co, KY; m May 1831, Morgan Co, IL; d 15 Jul, 1889, Woodland, WA.
30. DAVIS, Nathan.
31. BRANHAM, Jane.
48. STRONG, Ezra Jr. b 4 Aug 1763, Cdichester, CT; m 19 Oct 1785; d 28 Feb 1833.
49. GATES, Nancy b 2 Aug 1766, Goshen, MA; d 22 Jul 1819.
58. ELLEDGE, Edward.
59. SCHOLL, Malinda b 25 Aug 1791; d 13 Nov 1865.
96. STRONG, Ezra b 4 Mar 1733, Hebron, CT; m 24 May 1754; d 7 Aug 1804.
97. PHELPS, Temperance b 3 May 1739, Hebron, CT; d 26 Oct 1810.
98. GATES, Gen. Silas.
99. WHITE, Mary.
118. SCHOLL, Peter b 15 Sep 1754, Shenandoah Valley; m 1782; d 11 Sep 1821.
119. BOONE, Mary b 1754; d 28 Sep 1825
192. STRONG, Ezra b 2 Mar 1702, Lebanon, CT; m 12 Jan 1731, Lebanon, CT; d 7 Mar 1785, Marlboro, CT.
193. CALVERLY, Abigail b 5 Oct 1714, Colchester, CT; d 3 Jul 1788, Colchester, CT.
194. PHELPS, Solomon.
195. BARBER, Temperance.
238. BOONE, Edward b 30 Nov 1740; d 1789.
239. BRYAN, Martha.
384. STRONG, Jedediah b 7 Aug 1667, Northhampton, MA; m 8 Nov 1688; d 12 Oct 1709, Wood Creek, NY.
385. INGERSOLL, Abiah.

Mary Mivshek continued.....

- 386. CALVERLY, Philip.
- 387. ADAMS, Hannah.
- 788. STRONG, Jedediah b 7 May 1637, Windsor, CT; m 18 Nov 1662; d 22 May 1733, Coventry, CT.
- 789. WOODWARD, Freedom b 1642, Dorchester, MA; d 17 May 1681.
- 1576. STRONG, John b 1605, Tauton, ENG; m 1636, Dorchester, MA; d 4/14 Apr 1699, Northhampton, MA.
- 1577. FORD, Abigail b Windsor, CT; d 6 Jul 1688.
- 1578. WOODWARD, Henry.
- 1579. -----, Elizabeth.
- 3154. FORD, Thomas.
- 3155. CHARDE, Elizabeth.

ANCESTOR CHART of Loretta "Lorie" HECTOR Okel
18625 NE August Ave, Battle Ground, WA 98604

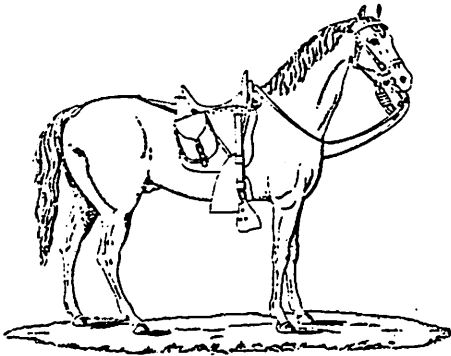
- 1. HECTOR, Loretta "Lorie" Joyce b 26 Dec 1937, Stockton, CA; m 23 May 1959 James David Okel (b 3 Dec 1936, Los Angeles, CA).
- 2. HECTOR, Chester Arthur b 3 Mar 1905, Santa Paula, CA; m 11 Dec 1934; d 16 Sep 1987, Vancouver, WA.
- 3. WEST, Marjorie Marie b 21 Mar 1911, Sterling, CO.
- 4. HECTOR, George W. b 24 Aug 1874, Santa Barbara, CA; m 24 Apr 1904; d 28 Oct 1945, Stockton, CA.
- 5. ANLAUF, Mary Agnes b 25 Jun 1878, Gardiner City, OR; d 13 Jul 1965, Patterson, CA.
- 6. WEST, George Ernest b 18 Mar 1876, Chipman Brook, Kings, NS; m 22 Apr 1902, 12 Dec 1966, West Plains, MO.
- 7. COFFEE, Nora b 6 Jul 1879, West Plains, MO; d 21 Sep 1947, Los Angeles, CA.
- 8. HECTOR, Zachary b 23 Sep 1849, IA; m 8 Sep 1871, d 6 Oct 1915, Visalia, Tulare, CA.
- 9. COOK, Mary Effie b 2 Dec 1855, San Bernardino, CA; d 19 Sep 1942, Santa Paula, CA.
- 10. ANLAUF, Hermann b 16 Jan 1853, Sachsen, GER; m 11 Oct 1876; d 21 Jul 1928, Burbank, CA.
- 11. KNEBEL, Theresia b 7 Jun 1860, Johnson Co, IA; d 16 Dec 1920, Santa Paula CA.
- 12. WEST, George Clark b 27 Aug 1842, Cornwallis TWP, Kings, N.S.; m 8 Nov 1866; d 13 Mar 1917, West Plains, MO.
- 13. McNAYR, Catherine b 16 Jul 1848, Springfield, N.S.; d 18 Apr 1936, West Plains, MO.
- 14. COFFEE, William Taylor b Feb 1847/8; Bradley Co, TN; m 9 Jun 1878; d 6 Sep 1917, West Plains, MO.
- 15. WEMPLE, Jane Helen b 8 Nov 1858, Lansing, MI; d 11 Jan 1923, West Plains, Mo.
- 16. HECTOR, b ca 1806; m 16 Dec 1830, Madison Co, OH; d ca 1877.
- 17. HAMMOND, Lavina b 1 Aug 1812, OH; d 12 Dec 1915, Milo, Tulare Co, CA.
- 18. COOK, John James b 22 May 1827, NY; m 8 Sep 1851, San Bernardino, CA; d 1880/1900.
- 19. TURLEY, Mary Ann b 13 Jul 1827, York, Toronto, Ontario, CAN; d 24 Dec 1904, Santa Paula, Ventura, CA.
- 20. ANLAUF, Franz b 25 Dec 1826; m ca 1851; d 22 Sep 1918.
- 21. SUTHAN, Theresia Agnes b 2 Sep 1828, Saxony, GER; d 6 Mar 1914, Anlauf, Douglas CO; GER.
- 22. KNEBEL, Thomas b 7 Jun 1835, Kronau, Baden, GER; m 15 Feb 1859 Johnson Co, IA; d 6 Feb 1888, The Dalles, Wasco, OR.

Lorie Okel continued.....

23. GOETZ/GATES, Mary b 17 Aug 1842, IL; d 12 Apr 1917, The Dalles, Wasco Co, OR.
24. WEST, William b 1796, Cornwallis TWP, Kings CO, N.S.; m 3 Dec 1818; d N.S.
25. FOOTE, Nancy b 1797, Kings CO, N.S.; d Nova Scotia.
26. McNAYR, Thomas Wade b 5 Jun 1815, Lawrencetown, Annapolis, N.S.; m ca 1841; d 4 Apr 1890.
27. MILLETT, Mary b 8 Jan 1819, Chester, Lunenburg, N.S.; d 4 Apr 1894, Falkland Ridge, Annapolis Co, N.S.
28. COFFEE, Collins b 1809, NC; d 8 Sep 1864, West Plains, Howell Co, MO.
29. HINKLE, Sarah b Feb 1817, SC/GA; d ca 1905, MO; bur: Parson Cem, Ozark Co, MO?
30. WEMPLE, Myndert Veeder b 12 Sep 1824, Rotterdam Jct, NY; m 24 Sep 1847; d 25 Jan 1887, West Plains, MO.
31. DAKIN, Sarah b 28 Aug 1830, Alleghany Co, NY; m 24 Sep 1847; d 25 Jun 1894, Detroit, Wayne Co, MI.
32. HECTOR, John (poss.).
33. BAILY, Rhoda (poss.).
34. HAMMOND, Jonathon b 1780, VT; m 7 Dec 1809, Ontario CO, NY; d 18 Feb 1863, Fulton CO, IL.
35. HERRINGTON, Louisa b 1792, NY; d before 1874 NE or IA.
38. TURLEY, Theodore b 10 Apr 1800, Birmingham, Wrwcks, ENG; m 26 Nov 1821; d 12 Aug 1871, Beaver City, UT.
39. KIMBERLEY, Francis b 22 Jun 1800, Birmingham, ENG; d 30 Aug 1847, Winter Quarters, NE.
42. SUTHAN, Karl, b Germany.
44. KNEBEL, Joseph b ca 1800, Baden, GER; m ca 1825; d 1855/60; St. Clair Co, IL.
45. WURGES, Maria Josepha.
46. GOETZ/GATES, Daniel b ca 1815, Bavaria, GER; m ca 1837; d 7 Jun 1890 Crow, Lane Co, OR.
47. FEYE, Mary/Marie Ann b Baden, GER; d 1869/70, San Francisco, CA.
48. WEST, Nathan b 1772, Rochester, MA.
49. ROCKWELL, Jerucha b 12 Feb 1775, N.S.
50. FOOTE, Robert b 23 Mar 1762, Bo'ness, Linlithgow, Sct; m ca 1785, N.S.; d Dec 1848, Kings Co, N.S.
51. KINNIE, Elizabeth b 12 Aug 1765, Horton, N.S.; d 5 Dec 1845, N.S.
52. McNAYR, Boyd b 29 Oct 1778, Glasgow, Scotland; m 29 Sep 1802, N.S.; d 17 Aug 1854, Springfield, Anna., N.S.
53. BEALS, Rachel b 6 Jun 1782, Annapolis, N.S.; d 9 May 1872, N.S.
54. MILLETT, George b 14 Apr 1781, Chester, Lunenburg, N.S.; m Jun 1804.
55. ETTER, Anna Bella b 22 Jul 1786, Chester, Lunenburg, N.S.; d 22 Jun 1867, Waterville, N.S.
60. WEMPLE, Nicholaas b 28 May 1780, Schenectady, NY; m 14 Jan 1809, D 18 Jan 1826, Rotterdam Jct., NY.
61. VEEDER, Nancy b 9 May 1794, Schenectady, NY; d 5 Jul 1876, NY.
62. DAKIN, Jacob b 8 Mar 1798, NY; m Dec 1818/21; d 10 Aug 1862, Dansville, Ingham Co, MI.
63. BARTLETT, Mahala b 17 Nov 1803, NY; d 24 Dec 1867, Dansville, Ingham Co, MI.
64. HECTOR, Casper (poss.).
66. BEALY, John (poss.).
68. HAMMOND, Jonathon b 1759, Woodstock, CT; m 19 aug 1779, Windsor, VT; d ca 1817, Orange CO, NY.
69. HOISINGTON, Hannah b 9 Sep 1759, Farmington, Hartford, CT; d 5 Feb 1843, Orange CO, NY.

TO BE CONTINUED.....

THE SEVENTY-THIRD INDIANA VOLUNTEERS IN THE WAR OF 1861-65



Field and Staff Officers

PRIVATEs - CO. C - Continued

TEEL, Moses, South Bend; died January 19, 1863; wounds received Stone River.

THOMPSON, John M., South Bend; died at Gallatin, Tenn., November 29, 1862.

TURNER, Melvin F., South Bend; deserted August 25, 1862.

VANGEISON, Richard A., South Bend; discharged October __, 1862; disability.

ZU TAVERN, Charles, Springfield, O.; discharged March 11, 1863; disability.

RECRUITS

BURDEN, Nathaniel; transferred 29th Regiment July 1, 1865.

CLOTHIN, Woodford; transferred 29th Regiment July 1, 1865.

HUGHLEY, Thomas M.; transferred 29th Regiment July 1, 1865.

POLK, William S.; transferred 29th Regiment July 1, 1865.

ROBERTS, Levi; transferred 29th Regiment July 1, 1865.

MOORE, John; transferred 29th Regiment July 1, 1865.

OFFICERS OF COMPANY D.

CAPTAIN

WILLIAM M. KENDALL, Plymouth; commission dated August 5, 1862; mustered August 16, 1862; promoted Major.

JAMES M. BEEBER, Rochester; September 1, 1864; May 16, 1865; mustered out with regiment.

FIRST LIEUTENANT

JOHN H. BEEBER, Rochester; August 5, 1862; August 16, 1862; resigned April 15, 1864.

WINFIELD S. RAMSAY, Plymouth; September 1, 1864; November 7, 1864; mustered out with regiment.

SECOND LIEUTENANT

WILLIAM T. GRIMES, Gilead; August 5, 1862; August 16, 1862; resigned July 25, 1864; cause, for the good of the service.

RUFUS M. BROWN, Plymouth; September 1, 1864; mustered out as Sergeant with regiment.

ENLISTED MEN OF COMPANY D.

FIRST SERGEANT

BEEBER, JAMES M., Plymouth; promoted Captain September 1, 1864.

SERGEANTS

SHIDLER, Noah, Plymouth; mustered out July 1, 1865.

HAGGERTY, Perry C., Plymouth; mustered out July 1, 1865.

NEWHOUSE, Thomas, Plymouth; mustered out July 1, 1865.

BROWN, RUFUS M., Plymouth mustered out July 1, 1865

CORPORALS.

CASE, JOHN H., Plymouth; died at Gallatin, Tenn., December 29, 1862.
RAMSAY, WINFIELD S., Plymouth; promoted 1st Lieutenant.
REED, WILLIAM H. H., Bourbon; mustered out July 1, 1865.
PRIMLEY, SENICA, Plymouth; discharged April 9, 1863; wounds received at Stone River.
JACKSON, DANIEL W., Plymouth; mustered out July 1, 1865.
COOK, WILLIAM G., Plymouth; mustered out July 1, 1865, 1st Sergeant.
SIMONS, WILLIAM H. H., Plymouth; mustered out July 1, 1865.
GIBSON, JAMES M., Plymouth; mustered out July 1, 1865.

MUSICIANS

HEYNEY, DAVID, Plymouth; deserted October 5, 1863.
UMHOLS, JOHN, Plymouth; mustered out July 1, 1865.

WAGONER

KREIGHBAUM, CYRUS, Plymouth; died at hospital at Louisville, Ky., January 19, 1864.

PRIVATEs.

ALLEN, Henry H., Plymouth; mustered out July 1, 1865.
ALBERT, Jonas, Plymouth; deserted September 1, 1862.
BARNHILL, Ezra K., Argos; mustered out July 1, 1865, as Corporal.
BEEBER, Samuel O., Rochester; mustered out July 1, 1865.
BEHNER, Francis M., Bourbon; died at Lebanon, Ky., November __, 1862.
BENDURE, John, Bourbon; died at Gallatin, tenn., January 16, 1863.
BENTZ, Benjamin, Plymouth; discharged March 26, 1863; disability.
BLASINGHAM, Thomas A., Inwood; mustered out July 1, 1865.
BRIGHT, William R., Inwood; discharged January 5, 1863; disability.
BRIGHT, Richard, Inwood; discharged January 1, 1863; disability.
BROADSTONE, John, Plymouth; mustered out July 1, 1865.
BORTON, Job, Argos; mustered out July 1865.
BURNS, Benjamin, Argos; mustered out July 1, 1865.
BURDEN, Thomas, Plymouth; mustered out July 1, 1865.
BOWEL, Andrew J., Argos; mustered out July 1, 1865.
BOWEN, Stephen J., Plymouth; discharged February 20, 1862; disability.
CLEM, James E., Plymouth; mustered out July 1, 1865.
COX, Fernando, Argos; mustered out July 1, 1865, as Corporal.
COVERT, William P. B., Plymouth; msutered out July 1, 1865.
CRUZAN, Oliver H., Plymouth; died at Nashville, Tenn. March 25, 1863.
CRUM, Daniel, Plymouth; died at Murfreesboro, Tenn. March 25, 1863.
DOWNS, James H., Plymouth; mustered out July 1, 1865.
DUNLAP, William T., Plymouth; discharged February 20, 1863; disability.
EVANS, Joseph, Argos; mustered out July 1, 1865.
FLORA, George, Plymouth; discharged February 20, 1863; disability.
FOSTER, Zepheniah, Plymouth; discharged January 1, 1863; disability.
GILSON, Thomas, Plymouth; mustered out July 1, 1865.
GILSON, William, Bourbon; transferred to V.R.C. October 23, 1863.
GILSON, John, Plymouth; mustered out July 1, 1865.
GERRARD, George W., Inwood; mustered out July 1, 1865.
GREEN, Benjamin F., Plymouth; deserted March 1, 1865.
GREER, George W. Plymouth; transferred to V.R.C. January 1, 1865.
GRIGGS, Ephraim, Plymouth; mustered out July 1, 1865.
GRIGGS, George W., Plymouth; transferred to V.R.C. October 25, 1863.
HENDRICKS, Thomas J., Plymouth; died at Nashville, Tenn., December 11, 1862.
HINDEL, John T., Inwood; mustered out June 18, 1865.
HENRY, William L. B., Plymouth; died at Nashville, Tenn., December 15, 1862.

PRIVATES Co. D Continued.

HOOKER, William, Argos; mustered out July 1, 1865.
HOLM, Adam, Plymouth; deserted September __, 1862.
KAISER, William H., Bourbon; mustered out July 1, 1865.
KAUFMAN, George W., Plymouth; mustered out July 1, 1865.
KELLER, John, Bourbon; mustered out July 1, 1865.
LEAK, Thomas, Argos; discharged August 8, 1863; disability.
LATHAM, Henry A., Plymouth; deserted August 17, 1862.
MCCOY, William H., Argos; mustered out July 1, 1865.
MCGRIFF, David, Argos; mustered out July 1, 1865.
MCGRIFF, Simon, Argos; mustered out July 1, 1865.
MCDONALD, James, Plymouth; died at Nashville, Tenn. December 15, 1862.
McLAUGHLIN, Harrison; Argos; mustered out July 1, 1865.
MAXEY, John A., Plymouth; mustered out July 1, 1865.
NEWHOUSE, Wilber F., Argos; mustered out July 1, 1865.
OAF, Jonathan, Plymouth; deserted September 25, 1862.
PAYNE, Martin V., Inwood; discharged January 1, 1863.
PIPER, Anderson D., Bourbon; transferred to U. S. Artillery January 4, 1863.
PFEIFFER, Jacob, Plymouth; discharged January 1, 1863.
PLOTNER, Conrad, Inwood; discharged January 30, 1863.
POMEROY, Smith, Plymouth; mustered out July 1, 1865.
REILLEY, Lewis S., Bourbon; died at Crabb Orchard, Ky., October 28, 1862.
REILLEY, John, Bourbon; mustered out May 15, 1865.
REIGHLEY, Edward, Inwood; discharged January 1, 1863.
REED, Anson, Bourbon; discharged May 8, 1863.
RHODES, Michael, Argos; discharged January 1, 1863.
STANLEY, Robert C., Plymouth; mustered out July 1, 1865, as Corporal.
STANLEY, Francis C., Plymouth; mustered out July 1, 1865.
SAPP, John H., Plymouth; mustered out July 1, 1865.
STAFFORD, William, Argos; mustered out July 1, 1865.
SMITH, Philip, Plymouth; mustered out July 1, 1865.
SMITH, Benjamin F., Plymouth; transferred to V.R.C. October 23, 1863.
SLUYTER, Asa P., Plymouth; captured near Tennessee River, September 29, 1864.
TABER, Henry C., Plymouth; mustered out July 1, 1865.
TRIBBY, John W., Argos; died in hospital, Silver Springs, Ky., November 19, 1862.
WARFIELD, George W., Plymouth; died in hospital, Murfreesboro, March 4, 1863.
WATSON, Martin, Plymouth; discharged December 14, 1862.
WILCOX, Charles H., Plymouth; mustered out July 1, 1865.
WILSON, William E., Plymouth; died near Nashville, December 6, 1862.
WALKER, Marion, Plymouth; deserted September __, 1862.
WEBB, Francis D., Plymouth; transferred to 73d Regiment, July 31, 1864.
WHITE, Joseph, Plymouth; mustered out July 1, 1865.
WHITTAKER, John, Argos; mustered out July 1, 1865, as Corporal.
WORLD, Otto, South Bend; mustered out July 1, 1865.
YOST, Lawrence, Plymouth; mustered out July 1, 1865.

RECRUITS

BERRY, Johnson, Argos; transferred to V.R.C. January 16, 1862.
BLACK, William H., Salem; transferred to 29th Regiment July 1, 1865.
BARLEY, Thomas J., Bradford; transferred to 29th Regiment July 1, 1865.
BRADBERRY, Francis T., Fredricksburg; killed in action near Jackson, Ala., April 8, 1865.
BURK, Enoch, Indianapolis; deserted May 28, 1864.
BUNCH, James, Bradford; deserted April 1, 1864.
BEEBER, George H., Indianapolis; transferred to 29th Regiment July 1, 1865.
CRAMER, Benjamin W., Plymouth; transferred to 29th Regiment July 1, 1865.
CONNELL, Charles C., Lafayette; transferred to 29th Regiment July 1, 1865.

To be continued

SURNAME FILE

MC CUAN Woodson Smith, b 2 May 1828 Limestone Co., AL, m Amanda CORNISH 17 Mar.
1867 Vienna, IL, f John MC CUAN, mo Elizabeth WICKHAM, d IL. HARSHMAN

MC CULLEY Keokuk Co., IA 1880 - 1916, County Down, Ire bef 1870, Des Moines, IA
1916 - . JONAS

MC CULLOUGH Millie Martha, b 1878 Salem, NE, d 1955 Boise, ID; James, b 1844/5
Pittsburg, PA, d 1908 Salem, NE; Robert Barber, d 1880. STEVENS

MC DANIEL John, b 11 Aug 1821 Summit Co., OH, d 30 Mar 1886 Polk Co., IA, m Mar-
garet KENDALL, b 25 Dec 1823 Bedford Co., PA, d 15 Oct 1889 IA. GOLPHENEE

MC DONALD 1928 IA. JONAS

MC DOWELL Maria, 1831-1905 PA, m George MC CORD. WORTHINGTON

MCEWEN Charles E., b 26 June 1850 NY, m Mary Fletcher BENNETT 1874 WA/OR, d 24
Sep 1932 WA. GEOGHEGAN

MCEWEN Charles Wm., b 1807 NY, m Clarissa C. 1831 NY, d 17 Jan 1884 OR. GEOGHEGAN

MCEWEN George, b 1703 CT, m Dec 1739 CT, d Jan 1786 CT. GEOGHEGAN

MCEWEN Harley, b 1786 CT, m Clarry EDDY 13 July 1806 VT. GEOGHEGAN

MCEWEN John, b 1730 CT, m Elizabeth HILL 30 Apr 1754 CT. GEOGHEGAN

MCEWEN Robert, b 24 Apr 1764 CT, m Ollie ca 1785 CT or VT. GEOGHEGAN

MCEWEN Robert, b 1660 Scot, m Sarah WILCOXSON 20 Jan 1695 CT, d 24 Feb 1739 CT.
GEOGHEGAN

MC GARREY IA. JONAS

MC GEE Michael, b 26 June 1759, m Elizabeth STEED 1751/2, d 21 Jun 1834 SC, RW sol.
WILLIAMS

MC GIMPSY/MC GIMPSEY bef 1865 Ct. Down, Ire, aft 1865 IL, aft 1880 IA. JONAS

MC GREGOR William, b 1879 Edinburgh, Scot, m Mary CAMERON fr NS 1867, 7 children,
11 MN, d 1930. GAGER

MC HENRY Mary Jane, 1852 - 1907 PA, m Warren Edgar PASSMORE; Lewis, m Susan KEER.
WORTHINGTON

MC ILHANEY VA. PORTER

MC ILWAIN Ire 1790, SC 1800, IN 1815, IL 1850. STARKEY

- MC KEE Alice Patricia, b 25 Jun 1931 Vancouver, WA, f Archie Leroy MC KEE, mo Katy Beatrice MATHYS, m Donald Edward BAUER 26 Aug 1949 Vancouver, WA. BAUER
- MC KEE Andrew, m/2 Elvira BLACKWELL, d bef 1883 MO ?. BAUER
- MC KEE Archie Leroy, b 17 Mar 1898 Vancouver, WA, f George Elden MC KEE, mo Alice Euphemia HARDY, m/1 Therese Clara NORD 3 Jun 1925 Ambey, WA div, m/2 Katy Beatrice MATHYS 25 Nov 1930 Stevenson, WA, d, m/3 Ada Christine BERGGREN 28 Dec 1938 Stevenson, WA. BAUER
- MC KEE George Elden, b 18 Jul 1867 MO, f Andrew MC KEE, mo Elvira BLACKWELL, m Alice Euphemia HARDY 3 Jan 1897 Amboy, WA, d 5 Nov 1938 Vancouver, WA, Park Hill Cem. BAUER
- MC LAUGHLIN OH, NJ. GILMAN
- MC LAUGHLIN Hannah, 1791 - 1833 OH, m Ebenezer MARTIN; Ephraim NJ, OH, m Elizabeth ZANE (Betty ZANE). GILMAN
- MC LEAN Samuel Martin, b 24 Jan 1866 Clark Co., WA, f Thomas Ashton MC LEAN, mo Nancy Ann ARMSTRONG, m Clara Belle WEDDLE 16 Nov 1890 Yakima, WA, d 30 May 1944 Yakima, WA. SMITH
- MC LEAN Thomas Ashton, b 6 Jan 1836 OH, f Thomas A. MC LEAN, mo Elizabeth Jane CROW, m Nancy Ann ARMSTRONG ca 1865, d 12 July 1918 Yakima, WA. SMITH
- MC LEAN Violet Izetta, b 21 Nov 1891 Clark Co., WA, f Samuel Martin MC LEAN, mo Clara Belle WEDDLE, m 26 Dec 1914 Francis John COLLINS, d 9 Aug 1965 Yakima, WA. SMITH
- MC LIN Louisa Virginia Bullock, b 1854 MO, m Joseph Isale CHENETTE 18 Apr 1871 Washington Co., OR, d aft 1880 Napa, CA. HARSHMAN
- MC MANNUS Catherine Jane, Ont 1843, MI 1878, Vancouver, WA 1888, OR 1897. KETTERLING
- MC MANNUS John, Ire ca 1820 ?, Ont ca 1840, s James, dau Catherine, s Samuel 1880 MI cen, mo Mary b Can. KETTERLING
- MC MURRY William, b ca 1725 Ire, m Mary or Agnes bef 1752 prob Ire, d bef 29 Nov 1798 Botetourt Co., VA; James, b ca 1760 Botetourt Co., VA, m/2 Margaret Priest SMITH 20 Jan 1799, d Bradferdsville, Washington Co., KY; Fielden (Fielding), b 31 May 1814 Washington Co., KY, m Harriet L. RIGGS 31 May 1836 IL, d 14 May 1860 Eugene, OR; James Scott, b 22 Jul 1848 IL, m Emma MURPHY 14 Sep 1873 OR, d 2 Jan 1924 WA; Edna, b 15 Nov 1891 OR, m Elbert Ira WALKER 2 May 1915 WA, d 22 May 1977 WA. HOLVERSON
- MC NAYR/MC NAIR Boyd, b 1778 Glasgow, Scot, m Rachel BEALS 1802, d 1854 Springfield NS, Can; Thomas Wade, b 1815 NS, Can, m Mary MILLETT, d 1890 NS, Can. OKEL
- MC NEAL Mildred Evalia, b 1914 OR - CA, m Roscoe PORTER; George Herbert 1885 - 1969 CA - OR, m Orfa LUDWIG; Herbert Willard 1854 - 1938 WI, MN, OH, m Lucretia EMERSON; Darius 1819 - 1884 VT - CA, m Nancy DANIELS. PORTER
- MC PHAIL Nancy Carrington, m Thomas Mann Randolph PARKER early 1800's VA. OMAN

ADDRESSES OF SUBMITTERS

BAUER A. Patricia 4114 NW 122nd Street, Vancouver, Washington 98685
 GAGER Lucy 2417 NE 199th Street, Ridgefield, Washington 98642
 GEOGHEGAN Mary Allen Post Office Box 4068, Vancouver, Washington 98662
 GILMAN Gerry 15411 East Mill Plain Boulevard #C14, Vancouver, Washington 98664
 GOLPHENEE Lois Monroe 203 North Morrison Road, Vancouver, Washington 98664
 HARSHMAN Rose Marie 2818 NE Littler Way, Vancouver, Washington 98662
 HOLVERSON Gloria J. 16304 NE 148th Street, Brush Prairie, Washington 98606
 JONAS Rose Marie 109 NE 92nd Avenue, Vancouver, Washington 98664
 KETTERLING Hazel 2613 NE Whitman Avenue, Vancouver, Washington 98662
 OKEL Lorie 18625 NE August Avenue, Battle Ground, Washington 98604
 OMAN Kitty R. 8701 NE Pierce Drive, Vancouver, Washington 98662
 PORTER Mrs. Mildred 2001 E 33rd Street, Vancouver, Washington 98663
 STARKEY Ann L. 3207 K Street, Vancouver, Washington 98663
 STEVENS Jane 11412 NE 49th Street #B-2, Vancouver, Washington 98662
 WILLIAMS Jeri Sandel 11519 NE 8th Street, Vancouver, Washington 98684
 WERTHINGTON Judy 9608 NE Hazel Dell Avenue, Vancouver, Washington 98665



FROM OUR SCRAPBOOK



6843. 1. WEBSTER. H.W.H.G. April 4, 1928. A Boston Transcript Column

Sarah (6) Webster, born May 8, 1776, at Harwinton, Conn., a twin married Samuel Lyman, Nov. 20, 1799, at Goshen, Conn. The date of his death is correct but the date of Sarah's death is April 2, 1848, aged seventy-two, at Newark, Wayne County, N.J. Children were Eliza, born Oct. 1, 1800, who married James Pierce; and Sarah, nothing given.

Deacon Cyprian (5) Webster, her father, was born July 28, 1733, and married Feb. 25, 1768, Sarah Hayden of Harwinton, Conn., who was born Nov. 21, 1743. the daughter of Joseph and Esther (Grant) Hayden, although in Windsor, the record reads--Cyprian Webster married Feb. 25, 1768, Sarah Nichols, born Nov. 21, 1743, daughter of Joseph and Esther Nichols. Cyprian Webster died April 12, 1809, at Harwinton, Conn., and his widow died March 11, 1828, and is buried in Goshen Conn. Children were: Cyprian, born March 3, 1769; Sarah and Elizabeth, twins, born May 8, 1776.

Cyprian (4) Webster, father of Deacon Cyprian Webster, was born Sept. 3, 1701, at Hartford, Conn., married to Elizabeth Seymour, Sept. 25, 1729, the daughter of Daniel and Mabel (Bigelow) Seymour. He died Dec. 24, 1770, and she died May 23, 1761. They had four children.

Ensign William (3) Webster, the father of Cyprian Webster, was born July 2, 1671 at Hartford, Conn., and married Nov. 28, 1700, Sarah Nichols, the daughter of Cyprian Nichols. William Webster died June 1722. They had ten children. She re-married after his death.

Robert (2) Webster, the father of William Webster, was born in 1627 and married in 1652 Susannah Treat, born 1629, the daughter of Richard Treat and Joanna, his wife, of Wethersfield, Conn.

Governor John (1) Webster with his wife Agnes, came from Warwickshire, England, to Massachusetts Bay Colony about 1630.

I do not have the ancestry of Cyprian Webster's wife. This information given above may be seen in "The Governor John Webster's Family Genealogy".
 F.A.T.C.

QUERIES

Queries are read by researchers in all regions of the United States and parts of Canada. The "Trail Breaker" is sent to Research Libraries and Genealogical Societies throughout the country. Queries are free to all Genealogists. We invite you to submit queries on your ancestors.



Please remember to show your appreciation to replies by a "Thank You" note and return postage.

No more than 3 Queries from one source will be published at a time. If more are submitted, the remainder will be reserved for the next issue. There is no restriction as to how many you wish to submit.

The following abbreviations are used and the editor reserves the right to use them in the submitted Query.

aft - after	Co. - County	gf - grandfather (gmo, etc)	p - parents
anc - ancestor	crsp - correspondence	ggf - great-grandfather	prob - probably
b - born	CW - Civil War	gp - grandparents	rec - record
bap - baptised	d - died	h - husband	RW - Rev. War
bet - between	dau - daughter	Info - Information	s - son
bef - before	desc - descendant	li - lived	sis - sister
bpt - place of birth	div - divorced	m - married	sol - soldier
bro - brother	dpl - place of death	m/l - married first (m/2)	srnms - surnames
bur - buried	f - father	mo - mother	Twp - Township
ca - circa, about	fam - family	mov - moved	unk - unknown
cem - cemetery	f-i-l - father-in-law	mo-i-l - mother-in-law	w - wife
cen - census	g - great	nm - name	xch - exchange



LEYMAN Michael Leyman, b. Philadelphia, Pa. in 1766 and Rachel Neal, NEAL b. 4 DEC 1775 in Northumberland Co., Pa. Would like to know the date of Michael's birth, date and place of marriage. Also the parents of both Michael and Rachel.

LEYMAN James Buchanan Leyman, b. 23 JULY 1856 in Mt. Eagle, Centre Co., SHANNON Pa. and Olive Shannon b. 18 May 1862. Would like to know Olive Shannon's place of birth in Centre Co. Pa. and also the date and place of their marriage.

SHANNON Edward Shannon b. 26 JUNE 1836 in Unionville, Pa. and Mary Jane DALE Dale born around 1835 and died in 1918 in Moshannon, Pa. Would like to know the date and place of birth and the date of death for Mary Jane Dale. Also would like the place of marriage for Edward and Mary Jane.

KEITH LOLA LEYMAN KEITH 8620 NE Mason Dr. #26 Vancouver, Wa. 98662

SMITH
WILKIE Seeking names and birthplaces of parents of Patrick Allen SMITH, born 1805 in County Armaugh, Ireland, m Henrietta WILKIE in England in 1837 and resided in Barrie, Ont. Canada. She died in 1847 in Barrie and he died in Lafayette, In. 1872. Harriet (Sarazin) Peterson, 6908 SW 8th Ave. Portland, Or. 97219

McKEE
BAKINS Were Andrew McKEE and Mary (BAMFORD) McKEE the parents of Joseph McKEE - born 18 Jan 1789, McKeesport, PA. m Margaret BAKINS 26 Mar 1812, Adams Co, OH, d 17 Feb 1881 Adams Co, OH. Other children possibly: William, Nancy, John, James, Jane, Andrew, Thomas, Mary. Will exchange.

ROSER
HEIMLICHER Need information about Margaretha HEIMLICHER ROSER, b Feb 1832
BIBER Switzerland, d ? m 7 Oct 1855 in Switzerland to Johannes
CURDES Jakob (John Jacob) ROSER, Methodist minister, b 20 Jan 1828,
SCHRAMM Germany, d 10 Nov 1883, Ohio. Children: Margaretha Barbara (m Albert BIBER), Paulus, Lydia (m George Frederick CURDES), Elias, Daniel (m Teresa Wilhelmena SCHRAMM), Martha, Enoch. Would like to contact descendants. Will exchange.

Margaret M. Peter - 9915 S.W. 31st Ave. Portland, Or. 97219

LAKIN Seeking parents and place of birth (probably Ind. or Ohio about 1833 of William LAKIN, settled in Clark Co. WA in 1852. m Emily McCCLURE in 1866.

Raymond Kuehne, 782 Kimberly Ct., Gaithersburg, MD. 20878

McELFRESH Seeking information on the origin of the James and Rachael McELFRESH family that settled near Centralia, WA. before 1882. Will exchange information about Josephine McELFRESH who m 1/ Thomas ARMENTROUT, m 2/ Joshua ZUMWALT in Centralia area 1886

Jane M. Armentrout, 20060 S.E. Highway 224, Clackamas, Or. 97015

EGGERT Searching EGGERT families in Wis. Need 2 brothers who went to Wis. while siblings Marie, Paul & Reinhold went to S. D. Also need sister Mrs. SCHADE who stayed in Germany.

KAMBERG
KLINGE Searching for descendents of Charles & Matilda KAMBERG and
FRENK children Amanda, Walter, Ted, Helen, Etc; William & Caroline
DIETZ and children Elizabeth* & Emma KLINGE; Edward & Caroline and children Edwin, Ida, FRENK, William, Dieta DIETZ; Eleanore, Walter & Mabel FRENK, Hattie KAMBERG. Kamberg's came from Germany and settled in Ill.

KELLERMAN Searching for "Aunt Mina" KELLERMAN - aunt of Caroline (Maeh1) EGGERT and descendents.

Carol Weber Rt. 2, Box 350, LaCenter, Wa. 98629

SURNAME INDEX

The alphabetical listings of the Surveyors and Indiana Private Soldiers lists are not indexed here.

- A --
- Achilles 16,17,18
Ack-ack-ton-hun 11
Adams 32
Ahern 9, 10
Al-wee-see-is-kum 11
Alvord 20
Allen 9
Armentrout 41
Armstrong 12,16,17, 18, 25, 38
Anderson 9
Andrews 9, 26
Andy 10
Anlauf 32
Assure 9
Att-matt-some-poo-un 11
Auger 9
Austin 19
Augustin 26
Ausity 11
Ay-mop-ti-um-ipputs 11
- B --
- Baily 33
Bamford 41
Barber 31, 37
Barnard 16
Barnes 16
Bartlett 9, 16,17 18
Barton 9
Bash 20
Bateman 9
Bates 9
Bauer 28, 29
Beall 17, 18
Beals 31, 33
Bealy 33
Bears Claw 11
Beber 41
Beeber 34
Bell 9, 10
Bennett 10
Bennington 9
Benzer 11
- Bercier 30
Berry 25
Beseda 26
Bigelow 12
Biles 9, 10
Billey 11
Birch 9, 10
Bird 10
Blackwell 38
Blankenship 12
Blessinger 26
Blockader 11
Boone 31
Bowman 21,22,23 26
Boy 11
Boyd 2
Bozarth 11
Brady 20
Branham 31
Bratton 11
Brezee 9
Broken Arm 11
Brown 34
Brunner 10
Bryan 31
Buchanan 9, 10
Burden 34
Burg 9
Burke 9
Burlingame 9, 10
Burns 9, 12
Buston 9
Butler 9
Bynam 9
- C --
- Calverly 31
Campbell 9, 10
Como 9
Caples 11
Captain John 11
Case 35
Chambre 10
Charde 32
Chase 13
Chenette 30,38
Cilly 17
Clark 22
- Clothin 34
Cochran 16, 18
Coffee 9,32,33
Collins 9, 38
Connell 15
Cook 32, 35
Coppage 27
Cornish 37
Covington 10
Cox 23
Craig 12,13,20
Cresap 24
Crosbie 12
Cummings 9
Cunard 31
Curdes 41
Curtis 9
- D --
- Daffe 30
Dakin 33
Dale 40
Dampfoffer 19
Daniels 38
Davenport 11
Davis 10, 31
Dean 9
Defflery 9
Derash 10
Deshaw 10
Divine 25
Dick 10
Dietz 41
Dodd 9, 10
Dole 17, 19
Dollarhide 27
Doty 12
Doud 10
Douthit 19
Down 28
Duck 11
Duston 10
Duparry 10
Durgan 9, 18
Durgin 10,15,19
- E --
- Ea-kake-tam-otaut 13
- Eakins 41
Eaton 11, 25
Ebby 13
Edwards 10
Eddy 37
Eggers 12
Eggert 41
Elledge 31
Emerson 31, 38
Ess-scoh-tum 11
Etter 33
- F --
- Farnsworth 17,18,19
Farr 10
Fast 30
Feye 33
Finckley 10
Finley 25
Fish tone 11
Fisher 25
Fitzhugh 12
Fletcher 10,15,16,17, 18,19,37
Foote 33
Ford 13, 32
Ford Sr. 12
Frank 10
Frazer 10
Fs-ko-ie-pilp 13
Freeman 20
Frenk 41
Freighbaum 35
French 9, 10
Frisbie 10
Fulcher 28
- G --
- Gager 37, 39
Gallagher 12
Galbraith 11
Gaither 19
Gardner 11
Gates 31, 33
Gee 10
Gentis 10
Geoghegan 37, 39
George 11, 13
Gibbons 10,16,17,19

Gibson 12
 Gilman 38, 39
 Gilson 17
 Girg 26
 Goddard 10, 16
 Goetz 33
 Goldbeck 16
 Golphene 37, 39
 Gove 12
 Grafton 15, 25, 29
 Gravelle 10
 Green 10, 23
 Grimes 13, 34

--H--

Haber 10
 Haddock 26
 Haggerty 34
 Hall 13, 17, 18, 19
 24, 26,
 Hamblin 26, 27
 Hammond 32, 33
 Hanselman 9, 10
 Hardy 38
 Harshman 26, 37, 38
 39
 Harrison 23, 24
 Hart 9, 10
 Has-hen-ka-kin 11
 Hathaway 12, 19
 Hartley 9
 Hatton 9
 Hat-tun-bun 11
 Hayden 39
 Hays 12
 Hector 26, 32, 33
 Heimlicher 41
 Henry 16, 17, 18
 Herrington 33
 Heyney 35
 Hill 12, 37
 Hiley 24
 Him-in-ill-uilp 11
 Hinkle 33
 Hiram 13
 Hoisington 33
 Holcomb 27
 Holm 26
 Holverson 38, 39
 Honetschlager 26
 Hoquet 10
 Hote-hose 11, 13
 Houston 10
 Howe 10, 27
 How-lish-wun 11
 How-lish-toh-ky-
 ee-tut 11

Huff 11
 Huger 12
 Hughley 34
 Hulbert 10
 Hull 10, 22
 Hump Back 11
 Hunder 20
 Hunt 12
 Hurd 12

--I--

Irby 9
 Ingalls 10
 Ingersoll 31
 Im-otus-tin-tin-
 im 13
 In-skulta 13
 In-ma-tune-pun
 13
 In-ma-t8-Walsa 13
 Ip-ni-pal-pun 11
 Ip-ma-tam-owe-
 yet-wa 13
 Irby 10
 Irvin 10
 Irwin 11
 Isbister 10

--J--

Jackson 35
 James 11
 Jason 11
 Jenkins 15, 30
 Jessie 11
 Jesse 13
 Jonas 15, 37, 39
 Jones 18, 20
 Joseph 11

--K--

Kamberg 41
 Kane 10, 12
 Keer 37
 Keith 39
 Kellerman 41
 Kelly 9, 10, 17
 Kendall 34, 37
 Ketterling 38, 39
 Kimberley 33
 Kindered 28
 King 8, 25
 Kinnie 33
 Kiser 12
 Klinge 41
 Klinge 41
 Knapp 29
 Knebel 32

Knight 17, 18, 19
 Ko-ko-e-he-nicht
 13
 Koos-hoots-u 11
 Koo-wanck 11
 Klopfenstein 30
 Kraft 11
 Krause 26, 30
 Kuyawa 28
 Kulo-wohike 13

--L--

Laffer 11
 LaFontaine 13
 Lakin 10, 41
 Lancaster 11
 Lander 12
 Lane 11
 Leahy 20
 LeClare 10
 Lee 10
 Legard 10
 Legg 10
 Lehl 25, 27
 LeLacy 12
 Lenqen 26
 Leonard 13
 Lewis 19
 Leyman 40
 Lilly 13
 Limberson 11
 Lindsay 10
 Linsey 9
 Little 11
 Lockwood 16, 17, 18
 Lodge 11
 Loftus 26
 Looking Glass 11
 Lone Bird 11
 Long 27
 Love 18, 19
 Lowell 31
 Lucas 11
 Ludwig 38
 Lyman 39

--M--

Mabry 10
 Marble 10
 Marchino 9
 Martin 10, 20
 Mathys 38
 Matthew 10
 Mathews 9
 Matthias 12
 Maulsby 19
 Maxon 9, 10, 12, 13,
 16, 17

Magruder 26
 Meaner 11
 Messinger 10
 Michel 10
 Micshek 27
 Millard 12
 Miller 10, 11, 26
 Millet 33
 Minnie 9
 Mivshek 31
 Moffit 10
 Moh-see-chak 11
 Moore 34
 Morrow 9
 Morse 10
 Murphey

--Mc--

McAndrew 9
 M'Andrew 19
 McArd 10
 McCallister 10
 McCarry 10
 McCarty 9
 McCuan 37
 McCulley 37
 McCullough 37
 McCurdy 12
 McDonald 10, 37
 McDowell 37
 McElpresh 41
 McEwen 37
 McFadden 9
 McFaddon 10
 McGarrey 37
 McGee 37
 McGimpey/McGimpsey 37
 McGregor 37
 McHenry 37
 McIlhaney 37
 McIntyre 11
 McIwain 37
 McKee 37, 41
 McKenzie 9
 McKinley 25
 McLaughlin 38
 McLean 38
 McLin 38
 McManus 38
 McMurry 38
 McNayr 32, 33, 38
 McNeal 38
 McPhail 38

--N--

Naph-for 11
 Nats-en-pow 11

- Nay-ap-an-ack 11
 Neal 40
 Nedron 11
 Newhouse 34
 Nichols 39
 Nick-eas-tsutlem 13
 Nitles 11
 Nisonger 31
 Nosep-ta-kelsa 11

 -- O --
 Okel 32, 39
 Oman 38, 39
 Old Barn (the) 11
 Orr 18
 Osterland 10
 Ough 27
 Ou-tashen 11
 Oyhee 10

 -- P --
 Pagett 12
 Palmer 22
 Parker 9, 10, 38
 Passmore 37
 Peep-home-kun 11
 Peru 30
 Peter 41
 Peterson 41
 Petter 10
 Phelps 31
 Phillip(s) 9, 10
 Pierre 13
 Pip-hom-kum 13
 Poe 24
 Poll-a-hin 11
 Pollock 11
 Pope 31
 Porter 37, 38
 Pouen-in-il-pulps 13
 Poppleton 11
 Powell 11
 Powers 11
 Primley 35
 Proebstel 10, 16, 17, 19,
 Puelea 10

 -- Q --
 Quish-keesh 13

 -- R --
 Rabbi 10
 Raboine 13
 Ramsey 28, 34, 35

 Rask 26
 Ratcliff 27
 Real Grizzly 11
 Red Bird 11
 Red Crow 11
 Red Eagle 11, 13
 Reed 35
 Riggs 9, 10, 38
 Roberts 34
 Robie 12
 Robinsen 12
 Rockwell 33
 Roser 41
 Ruth 12
 Ryan 9

 -- S --
 Sampson 28
 Samuel 13
 Sarazin 41
 Sim-i-pello 13
 Schiveitzer 28
 Schmid 28
 Schmidt 28, 30
 Scholl 31
 Schramm 41
 Schroder 9
 Schub 10
 Schubel 11
 Schuele 19
 Scott 26
 Seagraves 28
 Seven-days-Whipping 11
 Seward 9
 Seymour 39
 Shannon 40
 Sharpe 10
 Shea 19
 Shidler 34
 Shockley 10
 Short 9, 10, 26
 Shubert 16
 Silas 11
 Simons 35
 Sims 10
 Sloop-toop-min 11
 Smith 9, 10, 12, 15, 19, 20, 38, 41
 Spotted Eagle 11, 13
 Springer 11
 Spurgeon 9
 Stadfield 26
 St Andrews 10
 Stanley 10
 Stark 15
 Starkey 37, 39

 Steed 37
 Stevens 16, 28, 37, 39
 Stewart 27
 Stice 9
 Stivers 11
 Stratton 13
 Strong 9, 17, 31
 Struve 18, 19
 Sturgis 10
 Suthan 32, 33

 -- T --
 Tain-lik-ish 13
 Ta-kash-mish 13
 Talking Tobacco 11
 Talla-home-mish 11
 Tallman 13
 Tamar 10
 Tanish-tle-wat 13
 Taylor 9
 Tee-pahee-lisOkut 11
 Thing 16, 17, 19
 Thorndale 27
 Three Feathers 11
 Til-til-kos-tsut 13
 Tim-mish-lah-poo 11
 Timmons 11
 Timothy 11, 13
 Tlil-kun-kine 13
 Toll 26
 Tooley/Tooley 9, 10
 Torby 10
 Totten 10
 Tow-ish-oells 11
 Townsend 28
 Treat 39
 Tripp 15, 16, 17, 18
 Tschetter 30
 Tue-ee-takus 11
 Tu-ki-en-lik-it 11
 Turley 32, 33
 Turnbull 16, 17, 20
 Turner 9, 10
 Tsun-is-tle-poos 13
 Tuzo 12

 -- U --
 U-me-ah 11
 Umea-il-pilp 13
 Ume-u-il-pulp 13
 Umhols 35
 U-oo-li 11
 U-shay-ky-ik 11

 Usher 24

 -- V --
 Vogelsandt 9
 VanAtta 21, 22, 23, 24
 Van Bokkelen 12
 Van Buren 14
 Van Buskirk 10
 Varga 30
 Varzier 10
 Veeder 33
 Venatti 16, 17

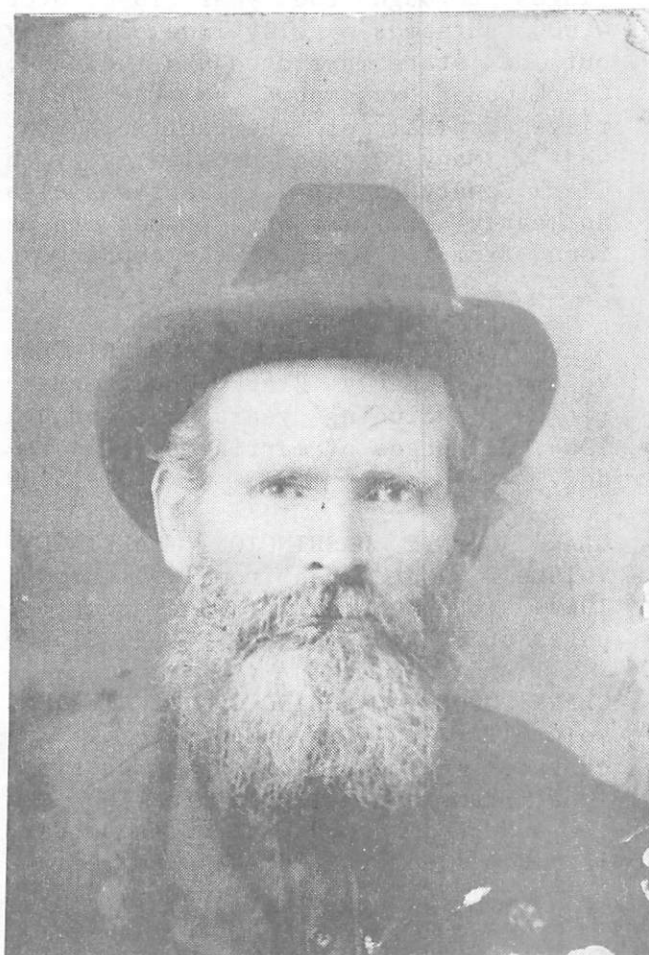
 -- W --
 Wade 28, 38
 Wahp-shee-li 11
 Wah-wee-mash-wattus 11
 Walch 19
 Waldner 30
 Walker 38
 Wall 19
 Wallace 9
 Wallas 10
 Wanes-at-wates 11
 Wap-tash 13
 Waptash-Tanana 13
 Warbass 12
 Was-ku-na-tu-tamosut 13
 Wat-i-wat-i-wchike 13
 Weas-kishen 13
 Webb 16, 17, 31
 Weber 41
 Webster 39
 Weddle 38
 We-ass-kuss 11
 Wee-at-say-kun 11
 Weed 12
 Wees-tass-kut 11
 Weffler 10
 Weldon 9
 Wemple 32, 33
 We-Shin-me-shus-tem-timin 13
 West 32, 33
 Wel-yalome-went 11
 Wetter-a-hi-pun 11
 Whipple 16, 17, 18
 Whitaker 11
 White 25, 31
 Wickham 37
 Wiggle 10
 Wilcoxson 37
 Wilkie 41
 Willard 12
 Williams 10, 11, 21, 37, 39

Will-lee-apmun 11	Woodward 32	Wo-wo-kea-il-pilp 13	-- Y --
Wilson 10, 25	Woolf 29		Young-tow-hist 11
Wiltshire 29	Worthington 37, 39	Wright 9,10,26	
Wintler 16, 17, 18	Wow-inesh-ash-watish 13	Wurges 33	-- Z --
		Wyche 15	Zane 38
			Zumwalt 41



Elmarine Jane Bowman

Van Atta



Eli Cyrus Van Atta

CLARK COUNTY GENEALOGICAL SOCIETY PUBLICATIONS

CLARK COUNTY WASHINGTON CENSUS OF 1850 and 1860, Volume 1 - Gives complete information on all members of household, not just an index. Compiled by Mildred E. Porter 68 pages. \$7.50

1870 CENSUS OF CLARK, CHEHALIS, COWLITZ, JEFFERSON AND ISLAND COUNTIES, WASHINGTON, Volume 2 - This book is the full federal census of these counties. Compiled by Mildred E. Porter. Fully indexed. 150 pages. \$15.00

CLARK COUNTY WASHINGTON CENSUS OF 1880 Volume 3 - Gives complete information on all members of household. Compiled by Ralph & Betty Korff. Fully indexed. 121 pages. \$15.00

CLARK COUNTY WASHINGTON MARRIAGES, Volume 1 - Early Clark County Marriages through the year 1896. Over 4,000 surnames. Fully indexed. Many out of state marriages are included. Clark County was known as the "Marriage Capital of the Pacific Northwest". Many Oregon people came to Clark County to marry. Their was also an early military post, names can be found from all parts of the country. 220 pages + index. \$15.00

CLARK COUNTY WASHINGTON MARRIAGES, Volume 2 - Early Clark County Marriages, including years 1897 through 1904. 221 pages of marriages, plus index. \$15.00

CLARK COUNTY WASHINGTON MARRIAGES, Volume 3 - Marriages from 1905 through 1909. 188 pages of marriages plus 111 pages of every name index. \$15.00

CLARK COUNTY WASHINGTON CEMETERIES, Volume 1 - Old City Cemetery of Vancouver. Includes tombstone inscriptions, cemetery maps, information from the sexton's records and some obituaries. Compiled by Mildred E. Porter 184 pages. \$15.00

CLARK COUNTY WASHINGTON CEMETERIES, Volume 2 - Includes St. James Acres, Salmon Creek Methodist, St. John's Lutheran, Pioneer and Fisher Cemeteries. Has inscriptions from Stones, additional information from funeral home or sexton's records, maps with grave locations. Compiled by the Clark County Genealogical Society Cemetery Committee. 231 pages. \$15.00

CLARK COUNTY, WASHINGTON CEMETERY RECORDS, Volume 3 - Post Military, Dead Lake (or Fallen Leaf) Bethel Lutheran, Washougal Catholic, Sara Union, St. Mary of Guadalupe, Ridgefield, Chelatchie Prairie, Bethel Methodist, Mt. Zion and Highland Lutheran Cemeteries. About 50 Obituaries included. \$15.00

CLARK COUNTY, WASHINGTON CEMETERY RECORDS, Volume 4 - Washougal, Gardner (or Hayes), Sacred Heart, Elim Lutheran, Amboy, Buncombe Hollow, Lewisville, Venersbert, Livingston, Mt. View. 223 pages, plus 49 pages of index and 50 pages of Obituaries. \$15.00

DIARY OF CYRUS SHEPARD, March 4, 1834-December 20, 1835 - Cyrus Shepard was a minister and teacher at the Willamette Mission, He traveled to Oregon with the famed Jason Lee Party. Compiled by Gerry Gilman. 120 pages \$10.00

CLARK COUNTY DEATH RECORDS, COURTHOUSE Book 1, 1891 to 1903 - The records contain name, date of death, sex, age, marital status, place of residence, place of birth, names and places of birth of parents, cause of death and signer of ceath certificate. Compiled by Colleen Bennett. 29 pages. \$3.50

THE LONG TRAIL TO PARADISE, Linus Brooks 1850 Journey - Linus Brooks was the founder of Brooks, Oregon, Contains family photos, genealogy and letters. Compiled by Gerry Gilman 162 pages. \$15.00

INDEX TO ANNUALS OF THE FORT
VANCOUVER HISTORICAL SOCIETY
1960-1985, Clark Co. Washington.
This Index of the Fort Vanc-
ouver Historical Society
Annuals is full name Index
and has been cross referenc-
ed. It is suggested that all
spellings of names be checked.
110 pages. \$7.50

ST. LUKE'S PARISH RECORDS-----
The Diaries of Rev. John McCARTY
1853-1868, and Rev. Albert S. Nich-
olson, 1868-1886. Compiled by
Lesla Scott.
47 pgs.+18 pgs. Index \$7.50

SKAMANIA COUNTY WASHINGTON
BIRTHS--1893-1926
DEEDS & MISCELLANEOUS RECORDS.
1855--1894
Compiled by Daphne Ramsay
Indexed 110 pgs. \$10.00

LIBRARY SHELF LIST of the
CLARK COUNTY GENEALOGY LIBRARY.
Compiled by Mary Allen Geoghegan.
100 pgs. \$5.00

SKAMANIA COUNTY WASHINGTON
CENSUS RECORDS. 1860-1870-
1880-1885-1887
Compiled by Daphne Ramsay
Indexed 110 pgs. \$15.00

SKAMANIA COUNTY WASHINGTON
CEMETERY RECORDS.
Cemetery records, abandoned
graves and burial records, and
stories that Tombstones do not
tell. Compiled by Daphne Ramsay
165 pgs. Indexed \$15.00

ORDERING INFORMATION:

Postage \$2.00 for first book and 50¢ for each additional book.
Washington residents must include 7.3 % sales tax.

EXCHANGES ?? We will gladly exchange our publications on a
page for page basis.

FOR SALES & EXCHANGES : Write to ROSE MARIE HARSHMAN
% Clark CO. Genealogical Society, P.O. Box 2728-Vancouver, Wa. 98668

BOOKS TO BE PRINTED SOON:

CLARK COUNTY MARRIAGES, Volume 4
CAMAS, WASHINGTON CEMETERY BOOK, One book
PARK HILL CEMETERY, VANCOUVER, WASHINGTON, Two books.
EVERGREEN MEMORIAL GARDENS, VANCOUVER, WASHINGTON, One book.

CLARK COUNTY GENEALOGICAL SOCIETY
P.O. Box 2728
VANCOUVER, WASHINGTON 98668

CLARK COUNTY GENEALOGY LIBRARY located at 1511 Main St.
Library Open - Tues. thru Sat. Vancouver, Washington
1 to 5 p.m.

CLARK COUNTY GENEALOGICAL SOCIETY
P.O. Box 2728
Vancouver, WA 98668

RETURN POSTAGE GUARANTEED

Non-Profit Org.
U.S. Postage
PAID
Vancouver, WA
Permit No. 934

The Genealogist
American-Canadian Gene. Soc.
P.O. Box 668
Manchester, NH. 03105-----