

AR

SA 01

# *Saskatchewan* **GENEALOGICAL SOCIETY**

VOLUME 22 NUMBER 2  
JUNE 1991

**BULLETIN**



*CSGS*



# THE SASKATCHEWAN GENEALOGICAL SOCIETY INC.

P.O. Box 1894  
Regina, Sask.  
S4P 3E1

SGS Library & Office  
2nd floor  
1870 Lorne St.  
Regina, Sask.

Telephone: (306) 780-9207  
Fax: (306) 781-6021

Office & Library hours  
Monday to Friday: 9:30am.- 5:00pm.

*The Library will be Open on the Third Saturday  
of the month and Closed the following Monday.*

The Purpose of the Saskatchewan Genealogical Society Inc. (SGS) as outlined in the Society Constitution (1989).

1. To promote, encourage and foster the study of genealogical and original genealogical research in the Province of Saskatchewan, especially as related to Saskatchewan families.
2. To collect and preserve in a library and archive, information as in books, manuscripts, typescripts, charts, maps, photographs, photostats, microfilms and related material, relevant to such genealogical, historical and biographical study; to index and catalogue the same and make such information readily available to members of the Society and to other persons, as may be provided in the By-Laws.
3. To maintain an index of similar material which may be preserved in other libraries, archives, museums and similar institutions, for the guidance of members and others authorized to use the facilities of this Society.
4. To encourage and instruct members in the ethical principles, scientific methods and effective techniques of genealogical research and to defend the standards of genealogy from incompetent and disreputable persons.
5. To enter into friendly relations with other Societies having a similar or related purpose, in Saskatchewan, other parts of Canada or in other countries and to cooperate with them in promotion of our common interests.
6. To publish and distribute books, bulletins, and other printed material as, from time to time, may be decided by the membership or the Board of Directors.

Membership is for the current calendar year at \$25.00 per family, \$22.00 for senior citizens.  
Subscription to the **Bulletin** is concurrent with membership.

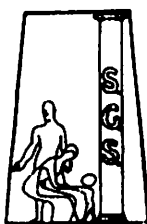
Donations to the SGS may be used as a charitable tax deduction.

Other organizations are invited to exchange their publications with the **Bulletin**.

SUPPORTED BY:



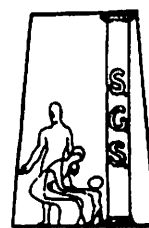




# THE BULLETIN

Journal of the

## Saskatchewan GENEALOGICAL SOCIETY



Editor: Rae Chamberlain  
Assistant Editor: Shirley Williams

Volume 22 Number 2  
ISSN 0048 9182

### Contents

1991 SGS Board of Directors & SGS Committees . . . . .	50
SGS Branches: Contacts & Meetings. . . . .	51
Up-Coming Events . . . . .	51
Editor's Note . . . . .	52
President's Report . . . . .	53
SGS Bulletin Board . . . . .	54
Saskatchewan Resident Index, A Progress Report . . . . .	55
News & Notes . . . . .	56
SGS Branch Projects . . . . .	61
Lotteries & Genealogy in Saskatchewan . . . . .	62
Gazetteers . . . . .	64
Land Surveys in Western Canada . . . . .	68
SGS Library Additions . . . . .	i
Book Reviews . . . . .	v
Canadian Genealogical Societies Membership Fees & Services . . . . .	vi
Archibald! What Are You Up to Now? . . . . .	73
Lightning Strikes On The Battleford Trail . . . . .	75
A letter from the Past . . . . .	76
Family Connections, Dalrymple & Heron Families . . . . .	79
The Gopher Hole . . . . .	81
News of the Family History Library . . . . .	82
Old Leader Notes . . . . .	84
Queries . . . . .	88
Computer Corner . . . . .	91
Letters . . . . .	94

Deadline for next issue of the **BULLETIN**: 1st August 1991.  
Material received after this date will be held over until next issue.

The **BULLETIN** is published quarterly. All submitted material will be considered for publication, however the Editor has the option of editing, reserving or rejecting any submission. Manuscripts must be fully referenced and carry the writer's signature. Please advise the Editor if the material has previously appeared in or been submitted to another publication.

The **BULLETIN**, does not accept paid advertisements. Book reviews and limited advertising will be done gratis on Donated Books, to be printed at the Editor's judgement.

Neither the SGS nor the Editor are responsible for errors of fact, nor for opinions expressed by contributors to the **BULLETIN**.

Queries of reasonable length are published gratis for members. Non-members may submit queries of up to sixty (60) words in length for a fee of \$5.00.

Articles published in the **BULLETIN** may be reprinted freely, except for copyright material from another source. A credit line and a copy of the publication containing the material is requested.

## 1991 SGS BOARD OF DIRECTORS

### OFFICERS

PRESIDENT: Celeste RIDER	4112-4th Ave., Regina	S4T OH5	569-9903
PAST-PRES: Roger WOUFF	95 Hammond Cres., Regina	S4R 3C8	543-0760
VICE-PRES: Peter WYANT	116 Mikkelson Dr., Regina	S4T 6R5	949-0142
VICE-PRES: Norm WILSON	Box 482, Regina Beach	SOG 4CO	729-4445
TREASURER: Jim OLIVER	181 McMurphy Ave., Regina	S4R 3G7	

### PROVINCIAL DIRECTORS

Retire 1991 Rosalie JARVIS	1922-97th St., North Battleford	S9A 0L3	445-4168
Retire 1991 Barb ARCHIBALD	Box 135, Biggar	SOK OMO	948-2138
Retire 1992 David MARSHALL	3418 Portnall Ave., Regina	S4S 1A8	584 5749

### REGIONAL DIRECTORS

#1. Thelma CALDWELL	Box 427, Central Butte	SOH OTO	796-4453
#2. Hannah BELL	23 McKinnon Bay, Weyburn	S4H 1L8	842-7529
#3. Barbara ONSTAD-OLYNUK	304-2205 Angus St., Regina	S4T 2A3	522-1639
#4. Rae CHAMBERLAIN	Box 1143, Biggar	SOK OMO	948-3638
#6. Donna SEALY	307 Ave. H, N. Saskatoon	S7L 2B9	382-5641

### SGS STAFF

Executive Director: Marge Thomas  
 SGS Librarian: Laura Hanowski  
 Typist: Lisa Warren  
 Workshop Coordinator: Norma Fraser

### SGS NON-BOARD POSITIONS

Cemetery Project: Wm. Flynn  
 Obituary Project: Marg Hilderman  
 25th Anniversary: Marie Svedahl  
 Bulletin Editor: Rae Chamberlain

## 1991 SGS COMMITTEES

### Chairpersons & Committee Members

#### Finance

Jim Oliver  
 Peter Wyant

#### Education

Rosalie Jarvis  
 Donna Sealy  
 Barbara Onstad-Olynuk

#### Anniversary

Marie Svedahl  
 Thelma Caldwell  
 Bev Weston

#### Promotion

Jim Oliver  
 Carole Wyant

#### Executive Management

Celeste Rider  
 Jim Oliver  
 Peter Wyant  
 Norm Wilson  
 Hanna Bell

#### Seminar

Peter Wyant  
 Donna Sealy  
 Richard Bemner  
 Jean Ashcroft

#### Personnel

Celeste Rider  
 Jim Oliver  
 Peter Wyant

#### By-Laws & Constitution

David Marshall  
 Frank Dornstauder

#### Committees & Elections

Roger Wooff

#### Publications

Rae Chamberlain  
 Barb Archibald  
 John Marley

#### Library

Donna Sealy  
 Norm Wilson - Brian Stubbings  
 Laura Hanowski

#### Long Range Planning

Norm Wilson



## SGS BRANCHES: CONTACTS & MEETINGS

**BATTLEFORDS BRANCH:** Box 32, North Battleford, S9A 2X6  
Meetings: 3rd Wed. Contact: Carolyn Hayes #892-4314

**BIGGAR BRANCH:** Box 1424, Biggar, S0K 0M0  
Meetings: 2nd Wed. Contact: Charles Poitras #948-5110

**BORDER BRANCH:** GBS 8-10, RR#2, Lloydminster, S9V 0X7  
Meetings: 4th Mon. Contact: Janet Newman #825-2701

**CENTRAL BUTTE BRANCH:** Box 298, Central Butte, S0H 0T0  
Meetings: 4th Thurs. Contact: Joanne Berg #796-2148

**CRAIK BRANCH:** Box 337, Craik, S0G 0V0  
Meetings: 3rd Mon. Contact: June Exelby #734-2820

**ESTEVAN BRANCH:** Box 130, Macoun, S0C 1P0  
Meetings: Contact: Barney Kuchinka #634-9221

**GRASSLANDS BRANCH:** Box 176, Mankota, S0H 2W0  
Meetings: 3rd Tues. Contact: Maggie Brown #478-2793

**GRENFELL BRANCH:** Box 696, Grenfell, S0G 2B0  
Meetings: 3rd Tues. Contact: Margaret FitzGerald #697-3470

**KINDERSLEY BRANCH:** Box 1204, Kindersley, S0L 1S0  
Meetings: 4th Tues. Contact: Pat Fischer #463-2087

**MOOSE JAW BRANCH:** Box 1702, Moose Jaw, S6H 7K7  
Meetings: 2nd Tues. Contact: Jeff Mander #694-4995

**NORTH-EAST BRANCH:** Box 1988, Melfort, S0E 1A0  
Meetings: 1st Tues. Contact: Ella Olson #752-3201

**PANGMAN BRANCH:** Box 123, Pangman, S0C 2C0  
Meetings: 4th Wed. Contact: Iris Johnson #442-4320

**PRINCE ALBERT BRANCH:** Box 1464, Prince Albert, S6V 5T1  
Meetings: 2nd Wed. Contact: Richard Bremner #764-0788

**QUILL PLAINS BRANCH:** Box 68, Kelvington, S0A 1W0  
Meetings: 1st Wed. Contact: Dianne Gradin #327-5379

**RADVILL BRANCH:** Box 325, Radville, S0C 2G0  
Meetings: 4th Mon. Contact: Sandra Howells #869-2890

**REGINA BRANCH:** 95 Hammond Road, Regina, S4R 3C8  
Meetings: 4th Tues. Contact: Louise Wooff #543-0760

**SASKATOON BRANCH:** Box 8651, Saskatoon, S7K 6K8  
Meetings: 2nd Wed. Contact: James Dynes #373-9196

**SOUTHEAST BRANCH:** Box 445, Carnduff, S0C 0S0  
Meetings: 4th Mon. Contact: Marion Hamilton #482-3972

**SWIFT CURRENT BRANCH:** Box 307, Swift Current, S9H 3V8  
Meetings: 4th Mon. Contact: Anna Knowlton #773-9472

**TRIANGLE BRANCH:** Box 736, Kipling, S0G 2S0  
Meetings: 4th Mon. Contact: Betty Burton #736-8476

**WEST CENTRAL BRANCH:** Box 36, Eston, S0L 1A0  
Meetings: 3rd Tues. Contact: Gail Milton #962-3382

**WEYBURN BRANCH:** Box 1422, Weyburn, S4H 3J9  
Meetings: 4th Mon. Contact: Hannah Bell #842-7529

**YORKTON BRANCH:** Box 487, Yorkton, S3N 2W7  
Meetings: Last Thurs. Contact: Larry Off #783-5473

**COMPUTER SIG:** Box 306, Lumsden, S0K 3C0  
Meetings: Sunday Contact: Bev Weston #731-2637

## UP-COMING EVENTS:

1991: July 8 - 14  
American Historical Society of  
Germans From Russia  
22nd International Convention  
Chicago, Illinois  
\*\*\*

1991: July 19 - 21  
Miramichi Irish Festival &  
International Gathering  
of the Irish  
Chatham, New Brunswick  
\*\*\*

1991: August 15 - 17  
1991 FGS Conference  
An All American Conference  
Fort Wayne, Indiana  
\*\*\*

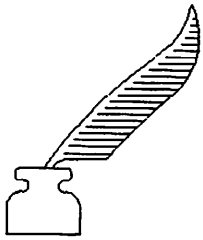
1991: September 19 -25  
Irish Genealogical Congress  
Trinity College, Dublin  
\*\*\*

1991: October 18 - 20  
Seminar '91 - Winnipeg, Manitoba  
Manitoba Genealogical Society  
Theme: East Euporean Sources  
\*\*\*

1991: October 25-27  
SGS Seminar '91 - Prince Albert, SK.  
It's A Small World After All  
\*\*\*

Regina Branch  
Sept: Immigration and Emigration Records  
\*\*\*





## Editor's Note

When this issue reaches you, most of you will be getting ready to go on vacation. Vacation time is also a good time to try and squeeze in some time to do a little research. If you can't interest the family in visiting the archives, try taking the family to where your ancestor's once lived. Pay a visit to the old home or farm site, walk the main street of the town, visit the church and cemetery.

I would like to thank those of you who answered my plea for material. I appreciate the time and effort you spent in preparing your contribution.

In this issue we have changed the format of the SGS Library Additions. They are now done in a column format on the same printer as the rest of the **Bulletin**.

There are several items in this **Bulletin** which I would like to draw to your attention. Our President, Celeste Rider in her report brings you up to date on the changes that have taken place this spring regarding the funding of sports, culture and recreation, and the effect these changes will have upon our Society.

With all these changes it is important that you have an understanding and appreciation of the system under which we obtain a major portion of our funding. Olivia Shumski, Assistant to the General Manager, Sask. Council of Cultural Organizations (SCCO), has written for us an interesting article on the link between our Society's activities and Saskatchewan Lotteries. I hope each of you will gain a greater appreciation and

awareness of the benefits we get from Lotteries from reading this article.

As well we are including an analysis of the membership fees and services offered by the various genealogical societies across Canada. This analysis describes the various services the societies provide for their members and the membership fees charged. Are you getting good value for your membership dollar?

The insert in this edition features Seminar '91, "It's a Small World After All". Seminar '91 will be held on the weekend of October 25th to 27th in Prince Albert. The Prince Albert Branch has recruited some excellent speakers to present an interesting series of lectures. The lectures cover a wide variety of topics and should make this an interesting and informative weekend.

A special feature at the seminar is a training session on Sunday morning titled "Instructor Training". This training session is for those interested in developing skills for presenting genealogical workshops. The workshop is designed to train participants in the preparation and presentation of a workshop. The skills acquired from this training session will allow participants to prepare and present workshops on family history. There is a \$5.00 registration fee for this workshop.

The SGS will be offering several resource workshops this fall. This series of workshops will be held in the evening. This is an excellent opportunity for those of you who have not attended previous workshops to attend. Details of the fall series of workshops can be found in the **SGS Bulletin Board** column.

I hope you have an enjoyable vacation.

-RWC



## President's Report

On March 25, 1991, the Minister responsible for Sport, Culture and Recreation announced major changes in funding responsibility. Effective April 1st responsibility for the funding of arts, multiculturalism, heritage, sport and recreation programs in this province was transferred from the Family Foundation to the three Saskatchewan Lotteries Trust Fund partners: Sask Sport, the Saskatchewan Council of Cultural Organizations and the Saskatchewan Parks and Recreation Association.

One of the reasons given by Honourable Beattie Martin, Minister of the Family, for this change was to give the people most involved, the volunteer community, a greater share of the decision-making and responsibility for programs.

As a result of this agreement there will be a major reduction in the funds the sport, culture and recreation partners have to work with. There are a number of new cultural groups for which Saskatchewan Lotteries Trust will have funding responsibility. There were organizations whose funds were previously funded directly by the provincial government, and administered by the Family Foundation, such as the Western Development Museum, the Norman Mackenzie Art Gallery in Regina, Sask Film and the Saskatchewan Arts Board. At the present time the Saskatchewan Lotteries Trust is striving to maintain the former levels of funding to these organizations so as not to disrupt the communities served by these institutions. This will result in reductions to PCOs of approximately 10-12% from 1990-91 levels. This means there will likely be a \$12,000 reduction in the SGS budget for the next budget year.

The total of all lottery and government grants previously provided to support sport, culture and recreation programs and services is no longer available to the extent provided previously. The impact of this agreement will be considerable to all of the players in this system. Dale Canham, President, Sask Sport said on March 26, 1991 that, "The transfer of funding responsibilities ... places significantly increased responsibilities on the volunteer boards involved in the provision of sport, culture and recreation programs and services." "Each recipient of lottery funding will have ... decisions to make in setting priorities and adjusting allocations to ensure the most effective use of the funds available."

The impact on our own organization is being looked at continually, and there is no doubt in my mind that changes will occur. We have to be sure that we are providing needed programs and services, that people want these programs and services and that they are provided in the most effective, efficient and accountable way possible. To achieve this we must undertake a critical review and evaluation of all of our programs and services. We will need to set our own priorities regarding our programs and services in order to make wise decisions regarding reductions when and where necessary.

We have been given the responsibility for ensuring that lottery dollars are being spent wisely and productively. Accountability will be even more important than it has been.

Celeste Rider



# SGS Bulletin Board

## In Memory

Sympathy is extended to Mrs. June Helm of Moose Jaw on the death of her mother, Brita Christina Lovett of Nipawin.

## A Reminder - Summer Hours:

July & August

Open 9:30am to 5:00pm Monday to Friday. No Saturday Openings. Saturday openings will begin again in September.

## Library Closing and Saturday Openings

July 1 - Closed

August 5 - Closed

September 2 - Closed

September 23 - Closed Library open - September 21

October 14 - Closed

October 21 - Closed Library open - October 19

October 28 - Closed

October 25 - Closed

October 25-27 - Seminar in Prince Albert

November 11 - Closed

November 18 - Closed Library open - November 16

December 16 - Closed Library open - December 14

December 21 - January 2 - Closed

## 1992 Membership Fees.

The SGS has set its membership fees for 1992 and they are as follows:

Regular Family Membership:	\$30.00 per year
Seniors age 65+:	\$25.00 per year

Historically, the membership fees for the SGS have been set to cover the cost of servicing a membership. These costs include publishing and mailing of the Bulletin, legal responsibilities as a society (audit, annual reports, board minutes) and a portion of postage costs for mailing library books. The increase reflects GST, Provincial Sales Tax (PST), increased postage costs, and inflation.

## SGS Library Resources Workshops

Beginning in September workshops will be given in the evening from 7:00 pm -9:30 pm. Cost is \$5.00 per workshop. You must register in advance for classes at 780-9207. There will be some time during the evening to access the library for Registrants only.

September 7: Saskatchewan Resources in the SGS Library.

October 15: Making The Best Use of International Genealogical Index (IGI).

November 19: How To Use English and Scottish microfilm/fiche Resources In The SGS Library.

If you have topics you would like to see offered as an SGS resource workshop and preferred times, please call the office at 780-9207.

## Christmas Card Competition

Wanted pencil sketches or black and white photographs, suitable for SGS Christmas Cards. Your winning entry will bring you a \$10.00 prize towards any SGS purchase. Entries should be submitted by 15th August 1991 to SGS Christmas Card, Box 1894, Regina, SK. S4P 3E1. Good Luck!

## November - Salt Lake City Tour

Are you interested in going to the Family History Library in Salt Lake City? If there is enough interest a tour may be planned for November. Please let Marge Thomas know if you would like to go.

## Lottery Challenge

Don't forget to enter the SGS Lottery Challenge. Enter all your non winning lottery tickets.

## Door Prize Winners

The following people were winners of Door Prizes at the Annual Meeting April 27, 1991.

SGS Bumper Stickers - Richard Bremner, Betty McManus, Colleen Wolf, Alice Senecal, David Johnson, and Eileen Martsch.

Searching Your Canadian Roots by Angus Baxter - Gail Dorcas.

Managing A Genealogical Project by William Dollarhide. Donated by Dick Moore of Ancestor

Unlimited - Sylvia Fleischer-Rayworth.

Meyer Family Tree by Henry Meyer. Donated by Henry Meyer - Glenn Schwartz and Fred Rayworth.

### **Saskatoon Branch Celebrates 20th Anniversary**

*submitted by Evelyn Ballard*

The January 9th, 1991 regular meeting of the Saskatoon Branch SGS had special meaning for the Branch members'. It was in January twenty years ago that the organizational meeting was held in the Saskatoon Public Library.

This was the first meeting for present President James Dynes. Dorothy Lee and Evelyn Ballard were presented with Certificates of Appreciation by Past President, Donna Sealy.

Dorothy is a first year member, joining a few months after the organizational meeting. She has been a very active member all through the years. As well as being president and holding other offices she has served on the SGS Board of Directors.

Evelyn joined the branch a couple of years later and has been secretary since 1976, and was Newsletter editor for several years.

All members were presented with 20th Anniversary Bookmarks to commemorate the occasion.

A special Anniversary cake was served by Lunch Convenor, Lila Baldry, and helpers.

A former member, Delma Bradley was able to attend. Bobbie McMillan and Winnie McLeay, two former members and first year members were unable to attend.

---

## **SRI Progress Report**

*by Marie Svedahl  
Project Coordinator*

The Silver Anniversary Project Committee has set a goal for this project - our aim is to have ONE MILLION names entered on computer by October 1994. It is planned to have some sort of unveiling of the project at the 1994 SGS Seminar. You will hear more about that in the future.

In the meantime, some statistics on the present progress:

- Number of books registered: 140
- Books being actively worked on: 70
- Number of volunteers indexing data direct to SRI Data Entry Program: 28
- Number of books with index completed: 5
- Number of these currently being entered on computer: 4
- Number of volunteers who have offered to proof-read: 4

The Committee would like to thank those members who answered our call for volunteers. It all goes toward making this project work.

Some of our members may have considered indexing directly to the computer and we would like to point out that the SRI Data Entry Program is now operational. Do keep in mind that the Program can be used only on IBM compatible machines. If you are asking for the Program, please remember to tell us the size of diskette needed. Also we must know the title of the book you are indexing as each book is assigned an individual number, and you need this number to do your data entry.

\*\*\*



## News & Notes

*gleaned by Nellie Barber & Rae Chamberlain*

### **Descendants of Inn Keepers**

The Kingston Branch OGS is seeking information on people who operated an Inn in Frontenac or Lennox and Addington Counties. Information needed includes records or artifacts from these Inns, photographs of the families and buildings. If you have any information please contact: OGS Kingston Branch, Box 1394, Kingston, Ont. K7L 5C6

*OGS, Kingston Branch Newsletter, Vol. 18, No. 1*

### **German Lineage Books**

The first volume of German Lineage Books was published in 1889. Since then many more volumes have been published. This issue of **German Genealogical Digest** contains a list of surnames for the Hannover area. Article also has information on the availability of the 194 volumes of these lineage books.

*German Genealogical Digest Vol. VI, No. 4*

### **Acadian's**

An index of the principal family names of Acadia dating back to the founding fathers who came to Acadia between 1632 and 1635 appears in this issue.

*The Genealogist, The American-Canadian Genealogical Society, Vol. 16, No. 4.*

### **Copying Black and White Photographs**

Tom Carkner, has written an interesting article on this subject. Tom passes along some very valuable tips on how you can do it yourself. Included with the article are instructions on how to make a copy stand.

*The Nipissing Voyageur, Vol. 11.*

### **Commonwealth War Grave Commission**

This body was set up in 1917 with the responsibility for ensuring that graves of members of the Commonwealth forces who

died during the two World Wars are marked and maintained, to build and maintain memorials to the missing and to keep records and registers. If you have a relative who died overseas the Commission can tell you where he is buried or on what memorial his name may be found. To obtain information you need to know Regt. Number, Surname, Christian Name(s), Rank - Unit, Date of Death, Country of Death. Application forms are available from The Commonwealth War Grave Commission, Canadian Agency, 284 Wellington Street, Ottawa. K1A OP4.

*Generations, New Brunswick Gen. Soc. No. 46, Dec. 1990.*

### **1915 Prince George, BC, Voters List**

The Prince George Family History Society is publishing in their newsletter, the 1915 Prince George Voters List. Names are indexed alphabetically with occupations. This edition of the newsletter contains the surnames Latta to Pooke. Check other editions for other surnames.

*Prince George Family History Soc., Vol. 11, No. 4.*

### **Missing Persons**

(via Eastern Washington Genealogical Society) The US Social Security Administration will forward a letter for you to a missing person for humanitarian reasons or tracing a missing heir. You have to provide the missing persons birth date, parents names or other identifying information. There is no charge for humanitarian requests, other searchers cost \$3.00. Write to SSA Office of Central Records Operations, 300 N. Green Street, Room 1312, Tower Metro West, Baltimore, MD. 21201.

*Iowa Genealogical Society, Vol 11, No. 6.*

### **Iowa Research**

Are you stuck with your Iowa research? The Iowa Genealogical Society has some 716 indexes for sale. These include records for marriages, cemeteries, funeral homes, census mortality schedules, births, newspaper indexes, wills, naturalization, deaths, land owners and tax lists. 67 counties are represented in the catalogue. This edition of their journal also includes a list of the current addresses of the 84 chapters of the Iowa Genealogical Society. *Hawkeye Heritage, Iowa Genealogical Society, Vol. 25, No. 4.*

### **Buyer Beware**

(via SCAN Nov. 1990) The Genealogical Research Library in Toronto advertises a database of one million people who lived in Ontario pre 1900. The OGS, Simcoe Branch advises only two sources, an atlas and one census were used for Simcoe County. The GRL charges fees of \$55.00 to \$250.00. SCAN advises researchers to be wary of the GRL and doesn't recommend it. *Ottawa Branch OGS, Vol. XXIV, No. 1.*

### **BC Vital Statistics**

Prices have been increased for a certified copy, photostatic copy or photographic print of a registration. Searches covering one 3 year period now cost \$25.00. Searches covering more than 3 years cost \$50.00. *Newsletter, BC Genealogical Society, Vol. 16, No. 1.*

### **Pullman Collection**

Did your ancestor work for the Pullman Car Works, Pullman, Illinois? The South Suburban Genealogical and Historical Society, P.O. Box 96, South Holland, IL. 60473, has the Pullman Collection with information on about 200,000 employees of the Pullman Car Works. The SSGHS will do a search of these records for a \$10.00 fee per name. The file for an employee may include only a name or an entire pension file. A pension

file may include a birth certificate, military records, pictures, family relationships and cause of death.

*Polish Gen. Soc. Newsletter, Vol. XIII, No. 2.*

### **OPR Indexes**

The old parish registers of the established Church of Scotland are a valuable source and many of these are now indexed. Researchers using these indexes should make note of these two tips. Before beginning a search in the indexes, read Notes on Format at the start of the index for each county. These indexes should be used with care and watch for various spellings of surnames. Indexes for the following counties are available: Aberdeen, Banff, Caithness, Dundee, Forfar, Inverness, Kincardine, Moray or Elgin, Nairn, Orkney, Ross & Cromarty, Shetland, Sutherland, Glasgow, Angus, Clackmannan and Kinross.

*The Scottish Genealogist, Vol. XXXVII, No. 4.*

### **Royal Irish Academy**

The Royal Irish Academy, 19 Dawson Street, Dublin, is another society all researchers tracing Irish roots should not overlook. In this issue is an article which describes the society's library and valuable manuscript collection available to researchers.

*Irish Heritage Links, Vol. 4, No. 1 & 2.*

### **Irish Studies**

The Canadian Journal of Irish Studies will be of interest to those interested in learning more about Irish History and Ireland today. The journal is published twice a year in January and July, cost \$5.50. Subscriptions are available from, The Editor, Ron Marken, Department of English, University of Saskatchewan, Saskatoon, S7N 0W0.

*Irish Heritage Links, Vol. 4, No. 1 & 2.*

**La Societe Genealogique du Nort-Quest** (The North West Genealogical Society). Has been formed in Edmonton to promote the



family history of Francophone and Metis families in Alberta. At present no address is available but, interested persons may contact: Georgette Brodeur, by telephone at (403) 489-8864 for more information.

*Relatively Speaking, Vol. 19, No. 1.*

### **Bygdeboks - Norway**

Everything you always wanted to know about Bygdeboks, but were afraid to ask, is a suitable title for this article about Norwegians area or local histories. This article should be read by everyone interested in tracing their Norwegian roots, as it explains how to use them and what information they give. Some of these books maybe available by inter-library loan.

*The Dakota Homestead, Bismark-Mandan His. & Gen. Soc. Vol 19, No. 3.*

### **Preserving Your Photographs**

A dozen valuable tips for preserving your photographs.

1. Select photo -safe albums and adhesives.
2. Begin with the most recent photos first.
3. Keep one family album and one album for each child.
4. Document your photos.
5. Crop creatively but carefully,
6. Do not cut Polaroid prints.
7. Be selective.
8. Include special mementos with your photos.
9. Make acid free photocopies of news clippings for your album.
10. Take at least one roll of black-and-white film per year.
11. Do not store your negatives in the same place as your album.
12. Store your albums in an upright position.

*The Dakota Homestead, Bismark-Mandan His. & Gen. Soc. Vol 19, No. 3.*

### **So Your Ancestors Came To Canada Via The United States**

Many immigrants came to Canada from the

United States. Prior to 1908 persons were able to move freely across the International Boundary, but beginning that year border ports were established along the boundary. The National Archives has lists of immigrants arriving across the Canada/U.S. border, and at certain local lake and sea ports from March 1908 to December 1918. Like the passengers lists, these records are arranged by port and date and there is no nominal index.

*The Archivist, Vol. 17, No. 5.*

### **Musty Smelling Books**

Are you bothered by musty smelling books? Try putting one at a time in your microwave for one minute at low setting. Repeat if necessary.

*The Leaf of the Branch, SW Branch, Man. Gen. Soc. Dec. 1991.*

### **Researching Irish Ancestors**

Dublin birth, death and marriage records have been moved from the Customs House to 8-11 Lombard St., East Dublin. They have the 1901-1910 census on microfilm and the Church of Ireland parish registers. Wills are in the Four Courts Building, and the Roman Catholic parish registers are on microfilm at the National Library. Irish Civil Registration Indexes to marriages starting in 1845 are available at the LDS Family History Library.

*AncesTree, Nanaimo Family History Soc. Dec. 1990.*

### **U.S. Army Retiree's**

Do you want to find or locate a United States army retiree. Place your letter to the retiree in a stamped envelope with your return address and enclose it in an envelope addressed to: Commander, U.S. Army Reserve Personnel Centre, Attn: DARP-PAS-EVS, 9700 Page Boulevard St., St. Louis, Mo. 63132-5200. Furnish retiree's Social Security Number and /or service number if known. The charge is \$3.50 - cheque or money order made payable to the

United States Treasurer. (from Army Echoes, July/Aug 1989).

*North Central North Dakota Gen. Record, June 1990.*

### **Are These Your Ancestors?**

Garth Ulrich, Box 28, Spalding, SK, S0K 4C0, bought four old pictures at an antique store in Oregon. He would like to pass these pictures on to a relative or any other interested person for the price he paid for them (\$1.00 each) plus postage. The first picture is of Chas. Stevenon, taken 1888 in Derbyshire, England. The second photo is of Thos. Green of Colwyn Bay, North Wales, taken in 1890. The third picture is of Selma and Clara Knutson of Oregon. The fourth picture is of a gravestone, probably taken near Leicester, England. The gravestone reads: In Loving Memory of Caroline, wife of William Green, late of Normanton-Le-Heath, who passed away July 6, 1889, aged 63.

### **Renville County, ND, Plat Maps**

This issue has Plat maps c. 1914 for Renville County, North Dakota.

*North Central North Dakota Genealogical Record No. 44.*

### **DO NOT TURN OFF**

When using a microfiche reader leave the lamp on rather than switching it off between fiche, frequent switching reduces globe life.

*The Ancestral Searcher, The Heraldry & Gen. Soc. of Canberra Inc. Vol. 13, No. 4.*

### **Quebec Poll Books**

The Quebec National Archives, Montreal Branch, has a collection of rare, early half of nineteenth century Poll Books. These books are for various counties listing the name of the voters, place of residence and the candidate they voted for. A list of the available Poll books is listed in this article.

*Connections, Quebec Family History Society, Vol. 13, No. 3*

### **Cemetery Lists Richmond County Quebec**

This issue of **Connections** has a listing of cemetery lists available at the Quebec Family History Society for Richmond County, Quebec.

*Connections, Quebec Family History Society Vol. 13, No. 3.*

### **The Société Archiv-Histo**

The Société Archiv-Histo, 4315, Boul. Rosemont, Montréal, Québec H1T 2C8 has indexed and summarized marriage contracts, wills, sales, sales of land, investments, gifts etc for the period 1635-1765. These notices are cross-referenced by type of act, family name, dit... (nickname), profession, place of residence etc. The Society will do research for a minimum charge of \$10.0 and a charge of \$4.00 for each response with a limit of 5 questions.

*Connections, Quebec Family History Society, Vol. 13, No. 3.*

### **Oregon Research**

Researchers interested in tracing their Oregon ancestor will find this to be an interesting and informative article. This article covers early settlement, major repositories and genealogical resources by subject.

*National Genealogical Society Quarterly, Vol. 70, No. 1*

### **New Brunswick Vital Statistics**

Good news for New Brunswick researchers. The Vital Statistics Office is offering to provide genealogical statements of birth, marriage and death. The fees charged by Vital Statistics for genealogical research has been reduced from a \$25.00 fee to a standard fee of \$15.00. Provided the information is in the original record the genealogical statements will give more information than the current birth, marriage and death certificate. Vital records 100 years and older will be available through the Provincial Archives. This issue of **Generations** gives details about both of



these new services.

*Generations, New Brunswick Gen. Soc., No. 47.*

### **International Reply Coupons**

Canada Posts advises that starting 1 January 1991 the Universal Postal Convention (applied to all countries) stipulates that IRCs are exchangeable for an unregistered letter sent abroad by air (or for a priority item, the equivalent of airmail in some countries). This means that only one IRC will need to be purchased for air letters.

*Toronto Tree, Vol. 22, No. 3.*

### **Beware**

Some of you may once again be receiving a letter from **Halbert's**, Scarborough, Ontario announcing the publication of **The World Book of Your Surname**. These publications are not documented family histories! Buyer Beware!

### **Saskatoon History Review**

(formerly Saskatoon History) This journal, published annually by the Saskatoon Heritage Society, embraces articles on all aspects of the Saskatoon region of Saskatchewan. It is thus a storehouse of information on the origins and development, not only of one of western Canada's largest cities, but of the Prairie region as a whole. Articles include accounts of individuals and ethnic or religious communities, of architectural styles and architects, of native Indians, pioneer settlers and settlements, politicians, churches and stores, residences and cemeteries. It is a fully refereed journal and its authors are all persons with special knowledge of the history of the Saskatoon district. To make the journal better known the Society is making back issues of the journal available at a discount rate. Further details may be obtained by writing to the Treasurer, Saskatoon Heritage Society, P.O. Box 7051, Saskatoon, Sk. S7K 4J1.

### **Cornish Cousins**

#### **- Cornish American Heritage Society**

The Sixth Cornish American Conference, 'Cornish Cousins' will be held on August 8th - 11th, 1991 at the University of Victoria, BC. The Conference will cover genealogy, history, music, literature, and language. One of the highlights of this Conference will be the first Bardic ceremony to be held on the American continent. Further details about this conference may be obtained by sending a long S.A.E to Mrs. D.A. Sweet, 209-1525 Hillside Ave., Victoria, BC, V8T 2C1.

### **Moscow News**

**Moscow News** features a "Archive Service" Genealogical Bureau to help those trying to make contact with lost relatives. If you have Russian relatives who you have lost contact with you make like to give this a service a try. The address is Archive-Service, 103050 Moscow, USSR or Fax: 200-22-16.

In this issue of **Moscow News** Galina Khazio is looking for the children and grandchildren of Avram Yankelevich Khazio and Teve Yankelevich Khazio, b. in the Minsk Region, who emigrated to the USA and Canada before 1914.

Anatoly Ivanovich Mokachev is looking for his aunt Lipa Petrovna Silicheva (nee Mokacheva), b. 1916 or 1917 in the village of Chernitovo, Morshansky District, Tambov Region and her husband Nikolai Sergeyevich Silichev, who live in Canada.

Yekaterina Vasilyevna Zinkiv is looking for her father's brother and sister: Stefan Vasilyevich Zinkiv and Yekaterina Vasilyevna Uvanus (nee Zinkiv), who emigrated to Canada before 1941.

*Moscow News, 23 Jan., 1990*

## **SGS Branch Projects**

### **Battlefords Branch**

Indexing Memorial cards for 1987 - 1989.

Indexing Obituaries from two local newspapers for 1990.

### **Biggar Branch**

Indexed obituaries from *The Independent* for 1990.

### **Border Branch**

Recording Lloydminster Cemetery.

### **Central Butte**

Indexing births, deaths and marriages on file at R.M. of Enfield office.

### **Regina Branch**

Recorded Regina Beach Cemetery.  
Plan to record Lumsden Cemetery.

### **Estevan Branch**

Ontario Marriage Registers  
- purchased 12 reels of microfilm of the RG248 series. Films available for research at the Estevan Public Library.

### **Grasslands Branch**

Recorded Mankota Cemetery.

### **Grenfell Branch**

In 1990 purchased microfiche reader and some microfiche. This year plan to purchase 7 reels of the *Grenfell Sun* newspaper, covering the years 1895 to 1920. Available to researchers at the Grenfell Public Library.

### **Kindersley Branch**

Extracting and indexing births, marriages and deaths from the *Kindersley Clarion*.

### **Moose Jaw**

Recorded Roman Catholic Cemetery, R.M. of Marquis.

### **North East Branch**

Purchased microfilm/fiche reader, available to researchers in Melfort Library.

Recording local cemeteries.

### **Quill Plains Branch**

Recording local cemeteries.

### **Prince Albert**

Recorded St. Andrews Halcro Cemetery, Wild Rose and Langmeed Cemeteries.

Completed extracting births, marriages and deaths from *Prince Albert Advocate* 1894 - 1904.

Extracting births, marriages and deaths from the *Prince Albert Times* - 1907, 1908 and Jan, Feb. 1909 completed.

### **Radville Branch**

Cemeteries recorded: Radville, Souris Valley, Neptune and Emanuel Lutheran. Copies available in SGS Library.

### **Saskatoon Branch**

Woodlawn Cemetery now on computer, over 18,000 names.

Indexing *Western People* magazine.

### **South East Branch**

Update Oxbow Cemetery this summer.

### **West Central Branch**

Recorded old part of Rosetown Cemetery.

### **Weyburn Branch**

Compiling computer index of surrounding cemeteries.

\*\*\*



# Lotteries & Genealogy in Saskatchewan

by Olivia Shumski

## Did you know?

- that every time a lottery ticket is purchased, a portion of the net proceeds goes toward cultural activities, including visual arts programs?
- that Saskatchewan Genealogical Society (SGS) receives approximately 72.5% of its total operating budget from lottery proceeds?
- that less than two cents out of every dollar spent on lottery tickets in Saskatchewan goes into a lottery fund, which provides grants to organization in culture, recreation and sport?

If you know all of the above then you don't need to read any more. However, if you don't recognize or understand the strong link between genealogical activities and Saskatchewan Lotteries, then the following message is a must read.

Over the years in Saskatchewan we have created a lot of unique ventures, one of them being our lottery system. In every province through the nation, a licence has to be acquired from government in order to operate a raffle or lottery of any sort. This is where the provincial similarities end, because in most provinces the revenue from lottery ticket sales goes directly into government's general revenue.

Since the inception of the Saskatchewan Lotteries in this province in 1974, the license to run the lotteries has been awarded to a provincial non-profit organization called

SaskSport Inc.. Saskatchewan Lotteries is part of the Western Canada Lottery Foundation, along with Manitoba and Alberta. As well as having the license to run the provincial lotteries, SaskSport Inc. are charged with the responsibility to administer the Saskatchewan Lotteries Trust Fund for Sport, Culture and Recreation.

When people purchase lottery tickets in Saskatchewan, a small portion of their dollar, (less than 2% in the fiscal year 1990-91) goes into a fund called Saskatchewan Lotteries Trust Fund for Sport, Culture and Recreation. The **"Lotteries Trust Fund"** or the **"Trust"** was established in the early seventies for the purpose of granting funds directly to provincial, non-profit, volunteer organizations in the areas of sport, culture and recreation. In 1985, a second funding component, called the **Trust Initiatives Program**, which has come to be known as **TIP**, was created to funnel lottery dollars directly into Saskatchewan communities, local recreation boards, regional associations, and zones. These grants, a result of lottery dollars, provide an opportunity to enhance the quality of life of Saskatchewan residents in the areas of sport, culture and recreation.

There are three major organizations involved in the lottery community encompassing sport, culture and recreation. They are: SaskSport Inc., Saskatchewan Parks and Recreation Association (SPRA), and Saskatchewan Council of Cultural Organizations (SCCO). Each of the three groups have elected volunteers who are committed to the development of sport,

culture and recreation in this province. These dedicated individuals, comprised of provincial leaders in their respective disciplines, come together to set policy, and to receive and consider all requests for assistance from those provincial organizations deemed eligible for the Lotteries Trust Fund in the areas of sport, culture, and recreation. In culture, that includes groups such as the SGS, Sask. Music Festival Association, Museums Associations of Sask., and 26 other Provincial Cultural Organizations.

Among other things, one of the most important duties of SCCO is to make sure that the lottery funding system is fair and efficient for Provincial Cultural Organizations such as SGS. Also, it is imperative that the funds are used for the purpose intended -- **to enrich the lifestyle of the people of Saskatchewan.** SGS is among 130 provincial organizations, and 1130 beneficiary groups which receive lottery funding. These groups provide leadership and programming to their respective memberships and the various communities they serve.

SGS and all provincial organizations who receive funding from **Saskatchewan Lotteries** are required to promote and support the lotteries in every way possible, and as often as they can. This means that when SGS, or any of its member branches, holds an event, the lottery logo **must** be on all programs, posters, tickets, or other promotional materials. The same applies to projects such as publishing, historical research etc.

When your Master/Mistress of Ceremonies welcomes an audience to a genealogical seminar, or when a workshop leader is introduced prior to any of your genealogy workshops, the fact that the session was made possible because of lottery support

**must** be mentioned. This helps to instill in people's mind that the activities they are enjoying are a direct result of Saskatchewan Lotteries... working for you.

Awareness of lottery sponsorship is created by continually introducing participants, volunteers and audiences to the significant support that Saskatchewan Lotteries brings to programs such as genealogy to communities throughout the province. The total amount of lottery dollars that has gone into sport, culture and recreation activities this year, is in the neighbourhood of eighteen million dollars (\$18 million).

Finally, it is through this on-going promotion of lottery support that people begin to understand and appreciate that Saskatchewan Lotteries is the major sponsor of your genealogy activities. And it is this kind of support that fulfils the requirement of building a relationship between the beneficiary - Saskatchewan Genealogical Society - and the major sponsor - Saskatchewan Lotteries.

\*\*\*

Olivia Shumski, is Assistant to the General Manager, Saskatchewan Council of Cultural Organizations (SCCO). If any SGS member would like more information about SCCO or Saskatchewan Lotteries Trust Fund for Sport, Culture and Recreation please contact: 1850 Cornwall Street Regina, SK. S4P 2K2. Telephone Number (306) 780-9284.

\*\*\*

# Gazetteers

*by Rae W. Chamberlain*

When doing genealogical research we find our ancestors moved from one place to another location. This often creates a problem because genealogists need to know exactly the location and jurisdiction of a place to do research. A research tool available to genealogical researchers to determine the location and jurisdiction of a place is a gazetteer.

A gazetteer is an alphabetical dictionary of place names. When your research reveals a new place name consult a gazetteer to determine its location and jurisdiction. For genealogical purposes a gazetteer printed about the time your ancestors lived in that area is preferable to a modern gazetteer. A modern gazetteer will not have that same jurisdictions as one published 100 years ago.

"A gazetteer should be consulted for the following information: the correct spelling; changes in spelling (ancient and modern); correct combination of town, parish, and/or county; change in name; change in boundary; distinguish between two or more places with the same name; meeting places for religious denominations; names of near-by places; maps that may be included in the gazetteer and the population of a locality at a given period of time."<sup>1</sup>

When using a gazetteer it is very important to first read the introduction. The introduction explains how the information is listed and what special abbreviations and symbols are used in the book to save space. If you do not read the introduction, you may not be able to understand the information contained in the main body of the book!

One thing to keep in mind when using a gazetteer is that most of them were not published for genealogical research purposes. "Therefore there are genealogical limitations. Different editions of a gazetteer contain different information. Some gazetteers do not distinguish between a church parish and a government parish. The name of a particular locality may not be listed in the gazetteer."<sup>2</sup> Some of the reasons for a place not being listed are: "the gazetteer may cover too large an area to include small place names; the name of the locality may not be the name of a town, city or parish, but the name of a river, lake or landmark that is not included in the gazetteer. The gazetteer includes only places that existed at the time of publication, some places may be omitted because of oversight."<sup>3</sup> For genealogical purposes it may be necessary and beneficial to search more than one gazetteer to obtain the genealogical information desired.

One gazetteer published specifically for genealogists is **A Genealogical Gazetteer of England** by Frank Smith. This gazetteer gives the following information: "A description of each parish, chapelry, hamlet, etc, as it was in 1831. The date of commencement of all Church of England parish register before 1813. The name of the county in which the place was situated in 1831. The distance in miles from the next largest place. The population of each place as of 1831. The ecclesiastical jurisdiction of each parish. Nonconformist groups as listed in the 1831 edition of Lewis' **Topographical Dictionary**."<sup>4</sup>

The entry for Cornwood reads - "Cornwood



- parish 1685 Devon 5 miles ne Earl's Plympton pop 1,056 archd Totnes dioc Exeter."<sup>5</sup>

In this example of an entry in a gazetteer we learn Cornwood is:

- a parish of the Church of England, in the shire or county of Devon.
- registers begin in 1685.
- located in the archdeaconry of Totnes.
- located in diocese of Exeter.
- in 1831 the population was 1,056.
- located 5 miles north east of Earl's Plympton.

A gazetteer which gives more information about each place is **The Imperial Gazetteer of England and Wales**. Edinburgh; A. Fullarton, 1870.

In this gazetteer the entry for Cornwood reads "a village and a parish in Plympton-St. Mary district Devon. The village is commonly called Cross; stands on the river Yealm, close to the borders of Dartmoor, 1 1/2 mile N of the South Devon railway, and 9 1/2 miles ENE of Plymouth; and has a post-office under Ivy-Bridge, a station of the name of Cornwood Road, on the railway and fairs on the first Monday of May and the fourth Monday of Sept. The parish includes also the hamlet of Lutton, several other small hamlets and part of the chapelry of Ivy-Bridge. Acres 10,6880. Real property, £5,730. Pop. 1,087. Houses 201. The property is divided among a few. Delamore House, the seat of the late W.M. Praed, Esq., commands extensive views; Slade, the seat of the Podes is an interesting ancient mansion; Blatchford, the seat of Lady Rodgers, is an elegant edifice, with some valuable paintings; and Fardell, a very old farm-house, was the occasional residence of Sir Walter Raleigh. About 8,000 acres of the parish are common and moor. The living is a vicarage in the diocese of Exeter. Value,

£405. Patron the Bishop of Exeter. The church is chiefly perpendicular English, partly much older; and is in tolerable condition. The p. curacy of Ivy-Bridge is a separate benefice. Charities £68."<sup>6</sup>

Consulting this gazetteer we learn the following facts about Cornwood:

- the name of a village.
- a name of a parish of the Church of England.
- a name of a registration district.
- also known by the name Cross.
- located 9 1/2 miles east north east of Plymouth, a major centre which appears on all maps.
- parish also includes a hamlet of the name Lutton.
- includes part of the chapelry of Ivy-Bridge.
- population 1,087 with 201 houses.

An importation piece of information we learn from this gazetteer is the registration district for civil registration.<sup>8</sup> Cornwood is located in the registration district of Plympton-St. Mary. This information is helpful when searching the Civil Registration Indexes of England and Wales, for births, marriages and deaths.

For those doing Canadian research **Lovell's Gazetteer of British North America**. Montreal: John Lovell & Son, 1881, is a good gazetteer for determining the location and jurisdiction of places in existence in 1881.

An example of an entry is Montebello, "an incorporated village in Ottawa co., Que, on the River Ottawa, and on the Q.M.O. & O railway, 70 miles from Montreal. It was originally inhabited by Indians of the Algonquin tribe, who called it "Quiennontaterous," signifying a place intersected by two mountains. It contains a

Roman Catholic church, 2 telegraph offices, 3 hotels, and 6 stores. An aqueduct of tamarac logs brings a pure mountain stream into the village and supplies every house with water. Its port is called Major's. Pop. 900."<sup>8</sup>

In this example we learn Montebello was:

- a name of a village.
- population of 900.
- village in Ottawa County, Quebec.
- 70 miles from Montreal.
- had a Roman Catholic Church.

Another example is Moncrieff - "a post office in Huron co., Ont."<sup>9</sup>

This entry gives the following information:

- the name of a post office.
- located in Huron County, Ontario.

The SGS Library has several gazetteers. I will list these on the next page. Some of the gazetteers listed are Reference Only and must be used in the SGS Library.

In addition to the gazetteers available at the SGS Library, your local Family History Center will have some gazetteers on hand for reference. Additional gazetteers can be ordered in from Salt Lake City. Some of the gazetteers available at the Family History Center are part of the **100 Genealogical Reference Works On Microfiche**. These include gazetteers for Canada, Denmark, England and Wales, France, Germany, Ireland, Norway, Poland, Scotland, Spain, Sweden, United States, and individual states in the United States.

A useful book for determining what gazetteers are available is **The Library, A Guide to the LDS Family History Library**.<sup>10</sup> Additional gazetteers are found in the Family History Library Catalogue -

Locality Catalogue under **Country - Gazetteers** and under **County/State or Province - Gazetteers**.

After locating a place in a gazetteer consult an atlas or a map to get a visual picture of the place in relation to nearby places, boundaries, nearness to other counties etc. The place you located may not be on the first map you look at. The information you obtained from the gazetteer will allow you to have a good idea of the location of the place on a map. Good Luck with your research.

\*\*\*

### Footnotes

1. *Fundamentals of Genealogical Research*, Laureen R. Jaussi & Gloria D. Chaston. 1977, p. 145.
2. *ibid*, p.145, 146.
3. *ibid*, page 146.
4. *A Genealogical Gazetteer of England*, Frank Smith, 1968, 1987, p. xi.
5. *ibid*, p. 145.
6. *The Imperial Gazetteer of England and Wales*. Edinburgh, A. Fullerton, 1870, p. 1060.
7. *The Library, A Guide to the LDS Family History Library*, Edited by Johni Cerny & Wendy Elliott, 1988, p. 726.
8. *Lovell's Gazetteer of British North America*. Montreal, John Lovell & Son, 1881, p. 311.
9. *ibid*. p. 311.
10. *The Library, A Guide to the LDS Family History Library*, Edited by Johni Cerny & Wendy Elliott, 1988.

### Bibliography

*Fundamentals of Genealogical Research*, Laureen R. Jaussi & Gloria D. Chaston, 1977.

*A Genealogical Gazetteer of England*, Frank Smith, 1968, 1987.

*The Library, A Guide to the LDS Family History Library*, Edited by Johni Cerny & Wendy Elliott, 1988, p. 726.

## Gazetteers In SGS Collection

*Gazetteer of Canada: Manitoba.* 1968, 93p.

*Gazetteer of Canada: Yukon Territories.* 1980, 70p.

*Smith's Canadian Gazetteer: Upper Province or Canada West.* Smith, William H., 1846, 1870, 285p

*\*Gazetteer of Canada: Ontario.* 1962, 614p & 1988, 428p.

*Oxford Gazetteer,* 1852, Shenston, Thomas S., 1852, 1968, 218p

*Gazetteer & Directory County of Wellington, 1871-1872.* Lomis & Co. 1871, 238p.

*Gazetteer & Directory of the County of Simcoe Including District of Muskoka and Townships of Mono Mulmur 1872-3.* 1985, 283p.

*Eastern Townships Gazetteer,(Quebec).* Smith & Co. 1867, 133p.

*\*Gazetteer of Saskatchewan.* 1969, 173p.

*\*Gazetteer of the British Isles.* 1943, 763p.

*Bartholomew Gazetteer of Britain.* J. Bartholomew & Son. 1977, 271p.

*Genealogical Gazetteer of England.* Smith, Frank. 1968, 599p.

*Genealogical Gazetteer of Scotland.* Smith, Frank. 1971, 140p.

*Deutsches Ortsverzeichnis Unter Besonderer Berucksichtigung Der Zustaadigen Standesamter Fur Behordern Und Private.* 1930, 404p. German gazetteer with particular reference to civil registry jurisdiction. Lists 72,000

towns and villages in 1871 German Empire and Free State of Danzig.

*\*Gemeindeverzeichnis Fur Die Hauptwongebiete Der Deutschen Ausserhalb Der Bundesrepublik Deutschland.* 1982, 508p. Gazetteer of the main places of residences of Germans in areas other than West Germany 60,000 names.

*\*Geographisches Namenbuch Bundersrepublik Deutschland.* 1981, 789p. Gazetteer of Federal Republic of Germany. Lists standardized name of town, variant name, longitude and latitude.

*\*Mullers Verzeichnis Der Jenseits Der Oder-Neisse Gelegenen, Unter Fremder Verwaltung Stehenden Ortschaften.* 1980, 225p. Gazetteer of communities east of the Oder-Neisse line.

*German Towns In Slovakia and Upper Hungary: A Genealogical Gazetteer.* Gardiner, Duncan B., 1988, 100p.

*\*Mullers Grosses Deutches Ortsbuch.* 1974, 1180p. Lists towns in both West and East Germany with population, zip code, nearest railroad station.

*\*Gazetteer of East Europe Alphabetic Sequence.* (fiche) 350,000 place names in Austria, Bulgaria, Czechoslovakia, East Germany, Hungary, Poland, Romania, USSR (Jewish Pale of Settlement Republics only), West Germany and Yugoslavia.

*\*Gazetteer of East Europe Soundex Sequence* (fiche).

*Genealogical Gazetteer of Alsace-Lorraine.* Thode, Ernest, 1986, 137p.

Those marked \* are Reference Only.

# Land Surveys in Western Canada

*by Tom Smith, P. Eng.,  
Pathlow, SK.*

Genealogists, like others engaged in historical studies, inevitably need to know locations and how to relate to them when using public documents. The land survey system of the Canadian prairies is simple and precise. During the homestead era, ninety or a hundred years ago, a **locator** was often engaged to show an applicant a parcel of land. If the homesteader was from the American mid-west he would most likely find his way without help since he would have knowledge of a similar system used there.

The secret of locating, of course, was in having an understanding of the grid pattern and the identification code used to **monument** each section of land. Some definitions should be given now:

- **section** means a one mile square of land.
- **township** means a six mile square or thirty-six sections.
- **range** means a north-south line on the boundaries of townships.
- **meridian** means a north-south line forming an eastern boundary of a series of ranges.

Now if we were here (Melfort) about year 1900 our location would have the legal description West 1/2 Sec. 7, Twp. 45, Range 18, W2. A **monument** at the northeast corner would have an iron pipe about 3 1/2 feet in length bearing in Roman Numerals reading from the top VII, XLV, XVIII. The monument would consist of a

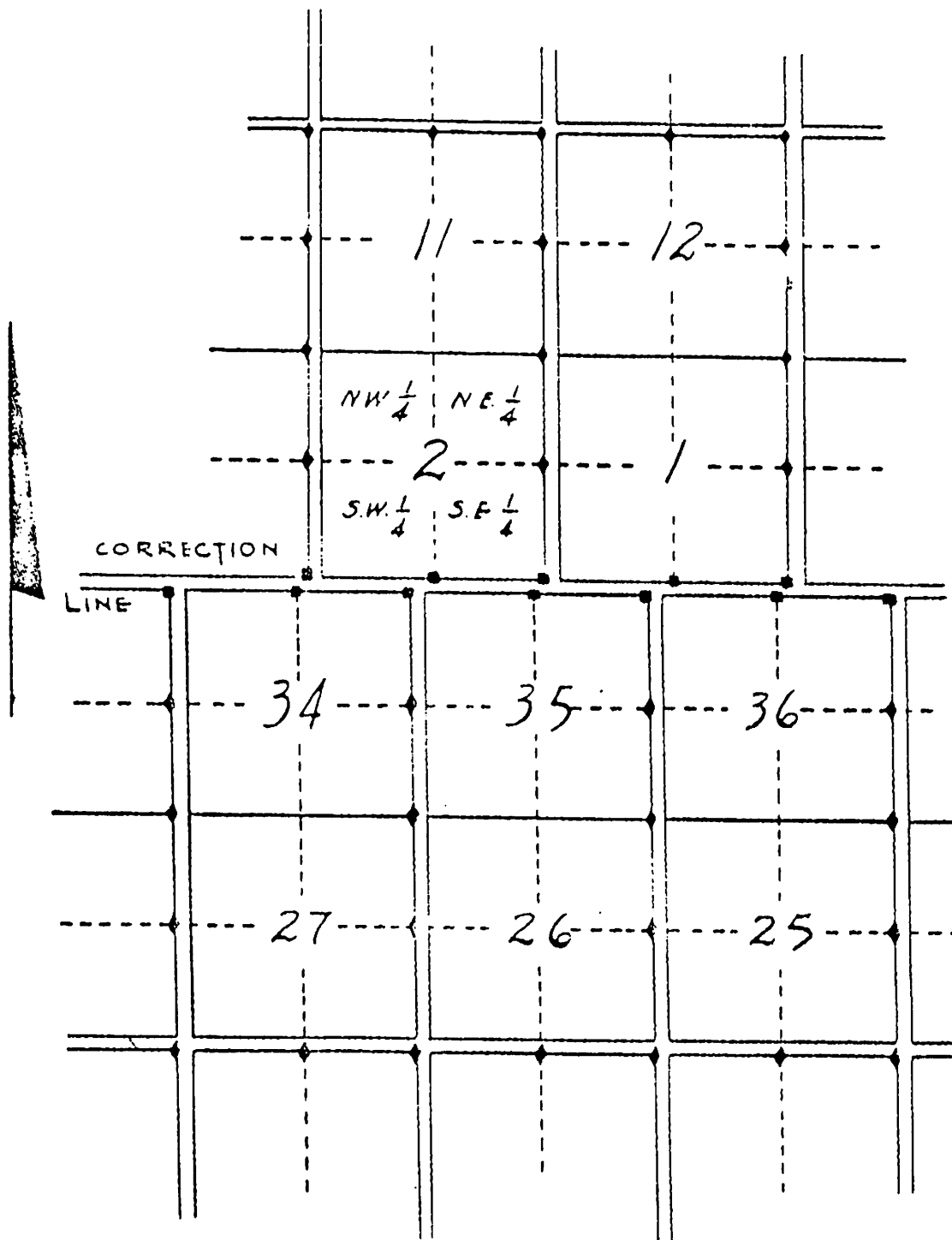
mound of earth centred within a square pattern of four pits eight feet apart. The pits were carefully dug two feet square by one foot deep; the mound formed about the iron stake thus having a volume of sixteen cubic feet or so. The pits were easily recognized in open prairie, the mound more readily in woodlands where cutting of sightlines had occurred.

Having told you how to locate Melfort in an earlier time, some more details may be told. Roman numerals were easy to cut on the solid square top of the soft iron stake using a cold chisel. Most of us have learned to read Roman numerals up to twelve on old clocks; I had to refer to a handbook to refresh my memory of XLV.

The men carrying the responsibility for this work were professionals using the title Dominion Land Surveyor or D.L.S. Today there are provincially licensed Saskatchewan Land Surveyors trained in that specialty.

There are in fact, several variations of the Western Canadian survey system. It may be of local interest to compare the Second System used in 1880 (for one year only), that of the Carrot River Settlement said to be the oldest inland homestead area in Saskatchewan. The block of three townships around Kinistino is shown to fit rather poorly with the Third System necessitating fractional townships designated 45A Range 22, and Townships 44, 45 Range 21A. These oddities partly result from the 99 foot road allowance used in the Second System in 1880 whereas 66 foot road allowances became the standard under the Third





SKETCH SHOWING LOCATIONS OF  
MONUMENTS  
THIRD SYSTEM OF SURVEY

I.W.T 17/11/64

System. The latitude and longitude of a starting point for the 1880 survey would have been obtained by star shots. North-south lines or meridians were obtained by astronomy which is beyond my training; so I will comment briefly on the uses for our research of the survey system, which had its origin in the USA in 1785. Our common border is the 49th parallel, an easily accessible base line for the unique grid.

Township lines are numbered serially from this northward. Ranges are numbered serially from the Meridians. The first Meridian is a north-south line just west of the Red River in southern Manitoba. The second Meridian is just west of the Manitoba-Saskatchewan border. In terms of the globe we refer to a base at Greenwich, down the Thames from London, England, as the zero. Our second Meridian is 102 degrees west of Greenwich.

The third Meridian is 106 degrees west and we cross it on Highway 41 just about the turn off entering Alvena. The fourth Meridian at 110 degrees is the boundary with Alberta. This 761 mile meridian is the longest straight survey line in the world. It is not as famous as the Mason-Dixon line, the disputed southern boundary of lands granted to William Penn in 1681 for settlement of the persecuted English Quakers. English surveyors Mason and Dixon located the east-west line during 1763-1768. It was important as the boundary between slave states and the north. Slaves escaping their owners felt some relief on crossing the Mason-Dixon line.

I have not referred to correction lines, the purpose of these being an adjustment for the convergence of meridians toward the pole.

Correction lines are properly termed **base lines**. These are twenty four miles apart with the exception of a first correction line

12 miles north of the 49th parallel. The jogs in the Saskatchewan-Manitoba boundary show where base lines occur. A local example is the north boundary of township forty-two just beside Silver Park, Baseline 12.

The last work of surveyors was subdivision of townships into sections, numbered westward from the southeast 1 to 6, eastward 7 to 12 with section 36 in the northeast corner. Each section was monumented with iron stakes which I described previously. Quarter lines were marked with iron stakes, pits and mounds, but only the north-east corners of sections were identified by the Roman numerals for section, township, range.

The settlement pattern of homesteads was a checkerboard, since only even numbered sections were available at first. Odd numbered sections became available in 1908 at the crest of the immigration wave.

Old maps such as the Prince Albert South Sectional Sheet are on a large scale. Trails in use prior to subdivision are shown accurately. Some of these were legally surveyed as sixty-six foot rights-of-way, the turns marked with iron stakes generally lettered R1, R2, etc. Locations of early post-offices are included on Sectional maps.

I must acknowledge my source of much of this material covered in a more detail by my deceased friend Professor I.W. Tweedell, D.L.S. of the Civil Engineering Department, U of S. Until recent years survey plans were drawn meticulously on linen with India ink signed by the surveyor. These may be viewed for a small fee in Land Title offices.

Homestead patents are indexed by name, section, township, range and meridians. The Saskatchewan Archives have these on microfilm for public use. Also, the registers

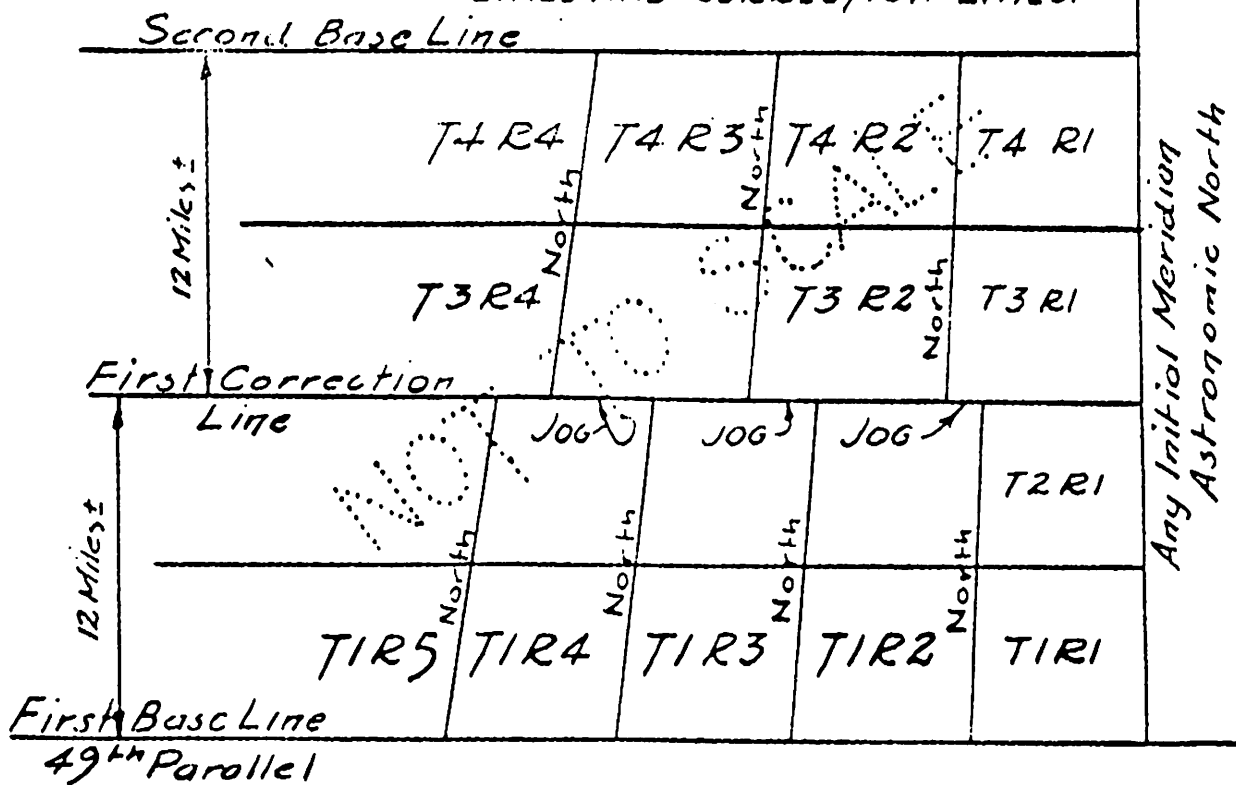
31	32	33	34	35	36
30	29	28	27	26	25
19	20	21	22	23	24
18	17	16	15	14	13
7	8	9	10	11	12
6	5	4	3	2	1

NUMBERING SECTIONS IN A TOWNSHIP

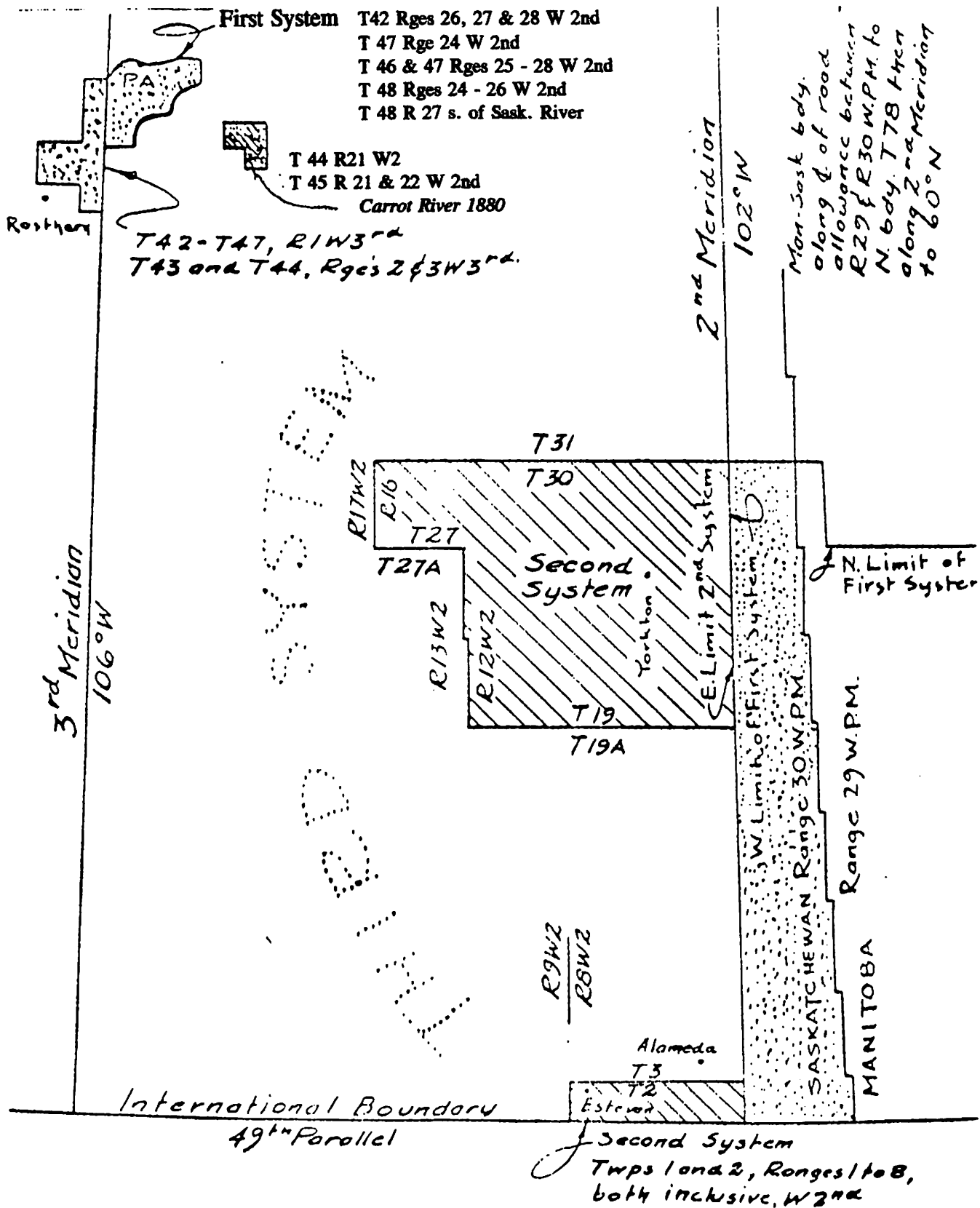
13	14	15	16
12	11	10	9
5	6	7	8
4	3	2	1

NUMBERING LEGAL SUBDIVISIONS IN A SECTION

SCHEMATIC DIAGRAM SHOWING LOCATION OF BASE LINES AND CORRECTION LINES.



IWT 17/11/64



Sketch to show distribution of survey systems in Saskatchewan. First System is stippled and Second System is cross-hatched. All the rest of the settled area is Third System except for the river lots in the Batoche - St. Laurent - St. Louis area.

.....continued page 73  
 JUNE 1991





## SGS LIBRARY

Additions

### Canada:

- Archival Sources For The Study Of Finnish Canadians. (book).  
Donated by Sister Luciene Desautels.

### Canada: New Brunswick

- Annotated List of Source Material on "The Irish In New Brunswick". (book).
- Kings County, Sussex: Story of Sussex and Vicinity New Brunswick. (book).
- Time There Was: Petersville & Other Abandoned Settlements in Queens County, New Brunswick. 1815 - 1953. (book).
- Vital Statistics from New Brunswick Newspapers: Volume 39, 1876-1876. Volume 40, 1876-1877. (book).

### Canada: Ontario

- Marriages of Non-Norfolk Residents By Norfolk County Ministers. (book).  
Donated by Lorene Cullen.
- Research Aid: An Index to Resources At The Ontario Archives - Newcastle, Ottawa & Gore District. (book).
- Sources for Genealogical Information In Niagara Peninsula (Brant, Haldimand, Lincoln, Norfolk, Welland & Wentworth). (book).

### Canada: Ontario, Brant Co.

- Birth, Marriage & Burial Records Of The Burford, Fairfield Plains & Bethel & Area Methodist & United Church 1886 - 1941. (book). Donated by Lorene Cullen.

- Cemeteries Of Brant County: Brantford Twp: Brantford. (book). Donated by Lorene Cullen.
- Cemeteries Of Brant County: Oakland Twp - Oakland Pioneer. (book).  
Donated by Lorene Cullen.
- Cemeteries Of Brant County: South Dumfries Twp - Clump. (book).  
Donated by Lorene Cullen.

### Canada: Ontario, Grey Co.

- Cemeteries In Grey County: Albemarle Township. (book).
- Cemeteries In Grey County: Egremont Township. (book).
- Cemeteries In Grey County: Egremont Township, Mount Forest. (book).
- Cemeteries In Grey County: Holland Township. (book).
- Cemeteries In Grey County: Proton Township. (book).
- Cemeteries In Grey County: St. Vincent Township. (book).
- Cemeteries In Grey County: Sarawak Township. (book).

### Canada: Ontario, Haldimand Co.

- Haldimand County Marriages 1803 - 1856. (book). Donated by Lorene Cullen.

### Canada: Ontario, Lambton Co., Enniskillen Twp.

- Cemeteries Of Lambton: Enniskillen Twp - Hillsdale. (book).  
Donated by Lorene Cullen.

**Canada: Ontario, Norfolk Co.**

- County of Norfolk Directory 1867. (book). Donated by Lorene Cullen.

**Canada: Ontario, Oxford Co.,  
Blenheim Twp.**

- Cemeteries Of Oxford: Blenheim Township, Volume 1. (book).

**Canada: Ontario Peel Co.**

- Brampton The Conservator: An Index 13 October 1876 - 26 December 1889. (book).
- Brampton The Conservator: An Index January 1890 - December 1894. (book).
- List of Families Names In the Perkins Bill Collection at the United Church Archives. (book).

**Canada: Ontario, Welland Co.**

- Farmers' Directory for the County of Welland c1891. (book).  
Donated by Lorene Cullen.

**Canada: Quebec**

- Loiselle Marriage Index, #133: Lessard, Aurelie - Levert, Augustin. (microfilm).  
REFERENCE ONLY.  
Donated by Nora-anne Dornstauder.

**Canada: Saskatchewan**

- Biggar - Meadow Lake, Lloydminster to Blaine Lake: Follow The Furrow - Ukrainian Family Histories. (book).  
Donated by Ukrainian Historical Society.
- Craik: Abstractions from Craik Weekly News 1965-1969. (book).  
Donated by Craik Branch SGS.
- Craik, Dunrobin: Index to 1919 & 1920 Student Registers of Dunrobin School District #3110. (book).
- Naicam: Celebrate Naicam School 1988-

1989. (book). Donated by Garth Ulrich.

- Spalding: Journey Down School's Memory Lane, Spalding School. (book).  
Donated by Garth Ulrich.
- Spalding: Spalding Roots and Branches. (book). Donated by Garth Ulrich.

**Canada/United States**

- Great Migration: The Atlantic Crossing by Sailing Ship 1770 - 1860. (book).  
Donated by Marge Thomas.

**Europe: Bukovina**

- Evangelical Churches of Bukovina. (book).

**Europe: Hungary, Banat**

- Roman Catholic Parish Register of Hungary, Banat, Freudenthal - Baptisms 1788- 1825, Marriages 1787-1856, Deaths 1787-1833, Deaths 1833-1856, Baptisms 1826-1856. (microfilms).  
REFERENCE ONLY.  
Donated by Faith Stepp.
- Roman Catholic Parish Registers of Hungary, Banat, Traunau - Baptisms, Marriages & Deaths 1788-1818, Baptisms, Marriages & Deaths 1819-1842. (microfilm) REFERENCE ONLY.  
Donated by Faith Stepp.

**Family Histories**

- Bates: Bates Journey 1820-1990. (book).  
Donated by Evelyn Bates.
- Busch: Galician Busch Families. (book).  
Donated by William Busch.
- Gedde: Gedde's Family History. (book).
- Hamilton: Hamilton Heritage - A History Of The Hamilton Family From County Mayo to Sydenham, Ontario, Carberry. (book).  
Donated by Ida M. Bole.
- Hubenig - Hicki: A Three Hundred Year

Journey Through History. (book).  
Donated by Rev. Alfred Hubening-  
Hicke.

- Novecosky: Jacob and Helen Novecosky. (book). Donated by Garth Ulrich.
- Reed: History of Reeds - Henry, William, Nathaniel. (book).  
Donated by Evelyn Jonescu and Dale Ching.

### **Genealogy**

- Genealogical Research Directory 1991. (book). Donated by K. A. Johnson
- Genealogical & Local History Books In Print - A Supplement Containing All New Books. (book).

### **General: Europe**

- English-Ukrainian Dictionary. (book).  
Donated by Barry Appleyard.

### **Great Britain: England**

- East Anglican Families - Northfolk, Suffolk & Cambridgeshire. (book).  
Donated by Peter Wyant.
- 1821 Census Hailsham, Sussex. (book).
- 1821 & 1831 Census St. Mary, Sussex. (book).
- 1831 Census Hailsham, Sussex. (book).
- 1851 Census Index: Suffolk, Volume 1 - 6. (book). Donated by Peter Wyant.
- 1861 Census Index: Essex. (microfiche).  
REFERENCE ONLY.
- Hampshire Chronical - Southampton 1776 - 1778. (microfilm).  
REFERENCE ONLY.  
Donated by George Wise.
- Index To Parish Register Entries Concerning Coast Guards And Their Associates In The Eastborne Area c.1813 - c.1814. (book).
- Indexes to Births, Marriages & Deaths for England & Wales 1855-1856 & 1872-1873. (microfiche).

### **REFERENCE ONLY.**

- Monumental Inscriptions - East Yorkshire. (book). Donated by Brian Stubbings.
- St. Michael, Lewes, Sussex Population 1811, Jury List, Voter List at 1832
- Using The I.G.I. In East Yorkshire. (book). Donated by Brian Stubbings.

### **Great Britain: Scotland**

- Index to Old Parochial Registers of Scotland to 1855: Glasgow Christenings and Marriages. (microfiche).  
REFERENCE ONLY. Special Collection Purchase.
- Index to Old Parochial Registers of Scotland to 1855: Orkneys Christenings and Marriages. (microfiche).  
REFERENCE ONLY. Donated by Ken Aitken.
- Pre-1855 Gravestone Inscriptions: An Index for the Stewartry of Kirkeudbright, Volume 1 and 2. (book).
- Registers of the Episcopal Congregation Fraserburgh Diocese of Aberdeen & Orkney Scotland 1766-1884. (book).
- Tracing Your Scottish Ancestry. (book).  
Donated by MacMillan of Canada.

### **Great Britain/United States**

- Lord Mayor's Court of London Dispositions Relating To Americans 1641 - 1736. (book).

### **Jewish Genealogy**

- Atlas of Jewish History. (book).
- Encyclopedia of Jewish Genealogy - Volume 1: Sources in United States & Canada. (book).
- Jewish Genealogy: A Sourcebook of Family. (book).
- Polish Jewish Cemeteries. (book).
- Unbroken Chain: Volume 1 and 2. (book).

### **United States**

- American Loyalist Claims. (book).
- American Surnames. (book).
- Development Of Early Emigrant Trails In The United States East Of The Mississippi River. (book). Donated by National Genealogical Society.
- Genealogical Register Of The First Settlers Of New England. (book)
- Germans To America - Lists Of Passengers Arriving At US Ports: Volume 15 June 1863 - Oct 1864; Volume 16 Nov 1864 - Nov 1865; Volume 17 Nov 1865 - June 1866; & Volume 18 June 1866 - Dec 1866. (book).
- Newspaper Research. (book).
- Pennsylvania Genealogist and Historian: Volume 1, Number 1-5. (book). Donated by Marie Svedahl.
- Pennsylvania In the Revolution: Volume 1, Number 1-4. (book). Donated by Marie Svedahl.
- Researcher's Guide To American Genealogy. (book).
- Wisconsin, Mackinac Registers of Marriages 1725-1821. (book)
- Wisconsin, Polk County Memories. (book). Donated by Garth Ulrich.

### **United States: Minnesota**

- Minnesota: Dodge County 125 Years Of History. (book). Donated by Barb Onstad-Olynuk.
- Minnesota Society Of The Sons Of The American Revolution From 1889 - 1989 Showing Ancestor From Whom Descent Is Claimed. (book).
- Some Abstracts from: Pioneers of Northern Minnesota. (book). Donated by Garth Ulrich.
- Tracing Your Ancestors In Minnesota: Volume 9 Northeast Minnesota. (book).

### **United States: North Dakota**

- Dakota Homesteader - Bismark - Mandan Historical & Genealogical Society, Inc. (periodical).
- 1910 Plat Maps of McHenry County, North Dakota. (book). Donated by Mouse River Genealogical Society.

### **United States/Norway**

- Guide to Norwegian Bygdeboker: In Family History Room Chester Fritz Library, Grand Forks, North Dakota. (book). Donated by Harvey Fox.

\*\*\*

### ***To An Ungrateful Genealogist***

*You wanted help and I sent it,  
The Xeroxed pages and more.  
It took the whole morning to do it,  
When I should have been  
washing the floor.*

*You didn't acknowledge my letter,  
Not even a "thank you" was sent.  
You really should have repaid me  
For the dollar fifty I sent.*

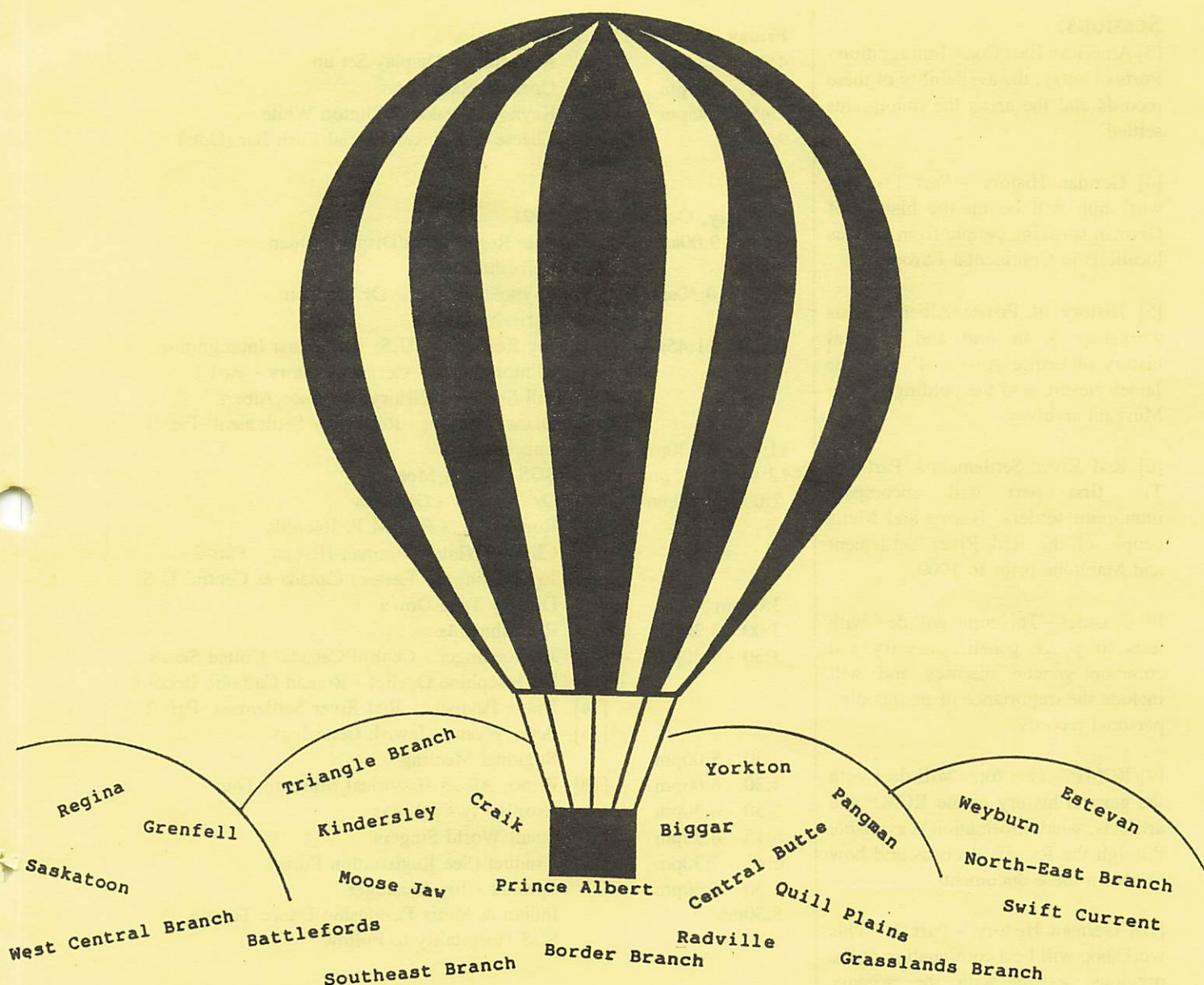
*So I'll chalk it up to experience  
And cross your name off my list;  
Then next time you need some more data  
I'll be too smart to assist.*

*Irene G. Van Wormer  
The Connecticut Nutmegger, March 1991*

\*\*\*



# ITS A SMALL WORLD AFTER ALL



Saskatchewan Genealogical Society  
Seminar '91'

October 25, 26, 27, 1991

at Prince Albert Inn

hosted by Prince Albert Branch



## "IT'S A SMALL WORLD AFTER ALL"

Saskatchewan Genealogical Society

1991 Annual Seminar

Prince Albert, Saskatchewan

25, 26 & 27 October 1991

Prince Albert Inn

### About The Seminar

Theme: "It's A Small World After All" was suggested because of the various ethnic groups that are living in Prince Albert and surrounding areas.

### Sessions:

[3] American East Coast Immigration - Ports of entry, the availability of these records and the areas the immigrants settled.

[4] German History - Part 1 - This workshop will be on the history of German speaking people from various locations in Continental Europe.

[5] History of Prince Albert - This workshop is an oral and pictorial history of Prince Albert, it's founder James Nesbit, and the holdings of the Museum archives.

[6] Red River Settlement - Part 1 - The first part will encompass immigrant settlers, Native and Metis people of the Red River Settlement and Manitoba prior to 1900.

[8] Genetics - This topic will deal with tests to prove genetic ancestry and common genetic diseases and will include the importance of maintaining personal records.

[9] RCMP - This topic will deal with the general history of the RCMP and artifacts, what information is available through the RCMP Records and how to obtain these documents.

[10] German History - Part 2 - This workshop will be a continuation of the previous session with the primary focus on the German Catholic immigrants who settled in the Humboldt area.

[11] Eastern Canada/United States Records - This workshop will explore the major sources from Quebec along the U.S./Canada border as far west as the Lakehead.

### Agenda

#### Friday, October 25th, 1991

- |               |  |
|---------------|--|
| 4:00 - 7:30pm | Registration/Display Set up              |
| 7:30 - 7:45pm | Opening Remarks                          |
| 7:45 - 8:45pm | [1] Keynote Speaker - Clinton White      |
| 9:00 -        | Cheese & Crackers Social/Cash Bar (Opt.) |

#### Saturday, October 26th, 1991

- |                 |   |
|-----------------|---|
| 8:00 - 9:00am   | Late Registration/Displays Open<br>Refreshments   |
| 9:00 - 10:30am  | [2] Keynote Speaker - Dr. Shokeir<br>Refreshments   |
| 10:30 - 11:45am | [3] Joy Reisinger - U.S. East Coast Immigration<br>[4] Clinton White - German History - Part 1<br>[5] Bill Smiley - History of Prince Albert<br>[6] Diane Payment - Red River Settlement -Part 1                          |
| 11:45 - 12:30pm | [7] Lunch   |
| 12:45 - 1:45pm  | SGS Annual Meeting  |
| 2:00 - 3:00pm   | [8] Dr. Shokeir - Genetics<br>[9] Ron Smith - R.C.M.P. Records<br>[10] Clinton White - German History - Part 2<br>[11] Joy Reisinger - Eastern Canada & Central U.S.<br>Display Take Down<br>Refreshments                 |
| 3:00pm          |   |
| 3:00 - 3:30pm   |   |
| 3:30 - 4:30pm   | [12] Joy Reisinger - Central Canada/ United States<br>[13] Sr. Josephine Ouellet - Roman Catholic Records<br>[14] Diane Payment - Red River Settlement -Part 2<br>[15] Peter Wyant - Jewish Genealogy<br>Regional Meeting |
| 4:30 - 5:00pm   |   |
| 4:30 - 6:00pm   | [16] Prince Albert Historical Museum Tour<br>Hospitality/Cash Bar<br>Small World Singers  |
| 5:50 - 6:30pm   |   |
| 6:15 - 6:35pm   |   |
| 6:45 - 7:30pm   | [17] Banquet (See Registration Form)<br>Speaker - Joy Reisinger<br>Indian & Metis Friendship Dance Troupe<br>SGS Hospitality to Follow  |
| 7:30 - 8:30pm   |   |
| 8:30pm          |   |

#### Sunday, October 27, 1991

- |                 |   |
|-----------------|---|
| 10:00 - 12:00am | [18] Bev Weston - SGS Computer Special Interest Group<br>Computers - St. Mary's School            |
|                 | [19] Norma Fraser - Instructor Training - P.A. Inn<br>SGS Room Number TBA (See Registration Form) |



Sessions continued.....

[12] Central Canada/United States - This workshop will be on the major sources of Central Canada and the U.S.(i.e. Sask. Alberta, Manitoba, Montana, N. Dakota, Minnesota).

[13] Roman Catholic Records -This workshop will deal with the history of the Prince Albert Roman Catholic Diocese, and the records of the Diocese.

[14] Red River Settlement - Part 2 - This will deal with migration of the Red River settlers from Manitoba to Central Saskatchewan. (i.e Prince Albert, St. Laurent, Batoche etc.)

[15] Jewish Genealogy - This workshop will deal with Jewish records including those Jewish people of German ancestry.

[18] Computer -"Hands On" - This workshop will be an introduction to the use of a computer for genealogy. It will be presented by the SGS Computer Special Interest Group. This class has been offered for the past two

years and has met with great success.

[19] Instructor Training - In this workshop, genealogists' will learn how to present and share family history with others, and learn the objectives of the training process. A preregistration fee is required for this workshop.

#### Presenters:

**Joy Reisinger:** Joy was born in Durand, Pepin County, Wisconsin and has been a member of various Genealogical groups throughout the U.S. and Canada, such as the National Genealogical Society and Association of Professional Genealogists. She is the Past Vice-President of the Wisconsin State Genealogical Society. She is the editor of a quarterly publication called *Lost In Canada*, author of the revised edition of *The King's Daughters* and more. Joy has received numerous awards for her accomplishments such as the Certificate of Merit from both the National Genealogical Society and the Minnesota Genealogical Society. She

has lectured at numerous Genealogical Conferences including the OGS, FGS and NGS.

**Clinton White:** Mr. White was born and raised in Saskatchewan. He has his masters degree in history from the University of Minnesota and a doctorate degree in history from the University of Saskatchewan. He currently teaches at Campion College, University of Regina. He has been researching the German Catholic immigrants who settled in our province and the educational developments in St. Peter's Colony near Humboldt.

**Dr. Shokeir:** Dr. Shokeir has obtained a masters degree and Ph. D. in Human and Medical Genetics. He joined the U of S and became director of Medical Genetics in 1975 and Professor of Pediatrics in 1977. He currently holds the position of Professor and Head of the Department of Pediatrics (U of S) at Royal University Hospital in Saskatoon. He has published many articles in the field of Medical Genetics and Pediatrics.

.....continued next page -

### Registration Form

Date \_\_\_\_\_

Surname \_\_\_\_\_ First Name \_\_\_\_\_

Street \_\_\_\_\_ City \_\_\_\_\_

Prov. \_\_\_\_\_ Postal Code \_\_\_\_\_ Phone \_\_\_\_\_

Country/Area Of Your Research \_\_\_\_\_

**Accommodations:** You are responsible for making your own hotel reservations.

**Conference Headquarters:** Prince Albert Inn

3680 - 2nd Avenue West

Prince Albert, Sk. S6V 5G2

Telephone: (306) 922-5000, Fax: (306) 922-2224.

**Meals:** Registration fee only includes the Lunch (Saturday noon).

Please circle the sessions and/or activities that interest you.

1 2 3 4 5 6 7 8 9 10 11 12 13 14 15 16 17 18 19



**Bill Smiley:** Mr. Smiley was born and raised in Prince Albert, Saskatchewan and is a retired school teacher and librarian. He is currently the Archivist for the Prince Albert Historical Society. He, along with four other people, compiled the book, *Voice of the People*, which is the reminiscences of Prince Albert's early citizens (1866-1895). He has also produced numerous television shows on the history of Prince Albert.

**Diane Payment:** Ms. Payment was born in St. Vital, Manitoba. She worked as a historian with the Canadian Parks Service in Winnipeg and has taught history at College Louis-Riel. Her most recent publication, *The Free People (Les Gens Libres) - Otipemisiwak: Batoche, 1870-1930* was published in 1990. An article on Metis women at Batoche *La Vie en Rose?* will be published in the papers of the 1989 Aboriginal Women's Conference. She

currently coordinates an oral history project with Inuit communities in the Baffin Islands, Northwest Territories.

**Sr. Josephine Ouellet:** Sr. Ouellet was born in the N.W.T.. She is a religious sister with the Order of the Presentation of Mary. Sr. Josephine is the archivist and curator of the parochial records of the Prince Albert Roman Catholic Diocesan, Chancery Office. She is familiar with the Hudson Bay Company and having lived in the north, Sr. Ouellet has a deep insight into the relationship of the Fur Trader and the Metis/Native people.

**Peter Wyant:** He is a Vice-President of the SGS and also a member of various Genealogical Societies in the U.S and England. He has been researching his family history, German Jewish and English (East Anglian) for a number of years. He has traced his Jewish ancestry back to the mid-

1700's and because of the many contacts he has made with family survivors, his research gives him a sense of pleasure (mechaya).

**Ron Smith:** Ron Smith was born in North Bay, Ontario. After completing high school, he joined the R.C.M.P. in 1956 and served in various centres throughout Saskatchewan. He retired as Staff-Sergeant in 1989. Ron currently resides in Prince Albert and is manager of the Prince Albert Historical Museum and is the local coroner.

**Norma Fraser:** She is a member of the Saskatchewan Genealogical Society and has been very active within the organization. She coordinates and facilitates SGS workshops. Norma also assists in the library, assists with curriculum and has a teaching background, specializing in Adult education and volunteers.

SUPPORTED BY:



### 1991 SGS Annual Seminar Fees:

(Please make all cheques payable to: Prince Albert Branch of SGS Seminar '91)

SGS Member Registration **prior** to 15 Sept. 1991 \_\_\_\_\_ x \$32.00 = \$ \_\_\_\_\_

SGS Member Registration **after** 15 Sept. 1991 \_\_\_\_\_ x \$44.00 = \$ \_\_\_\_\_

NON-Member Registration **prior** to 15 Sept. 1991 \_\_\_\_\_ x \$40.00 = \$ \_\_\_\_\_

NON-Member Registration **after** 15 Sept. 1991 \_\_\_\_\_ x \$47.00 = \$ \_\_\_\_\_

Instructor Training In Genealogy \_\_\_\_\_ x \$ 5.00 = \$ \_\_\_\_\_

**Meals:** 26 October - NOON LUNCH - included in registration fee.

26 October - **BANQUET** - \_\_\_\_\_ x \$15.00 = \$ \_\_\_\_\_

**TOTAL ENCLOSED** \$ \_\_\_\_\_

Send Registrations to: Jacqueline Hobbs - "It's A Small World After All Seminar"  
P.O. Box 58, Spruce Home, Saskatchewan SOJ 2N0



## BOOK REVIEWS

### **The Bates Journey 1820-1990.**

Bates, Evelyn J., 1990, 177 pages.  
Hardcover. \$22.00 plus postage.  
Available from Evelyn Bates, Box 215,  
Monarch, AB T0L 1M0.

The Bates Journey is set up to tell the complete story of each generation one chapter at a time. I like the way Evelyn is able to combine facts and speculation into a fascinating story. This means that others will be able to carry on further research in the future.

### **Tracing Your Scottish Ancestry.**

Cory, Kathleen B., 1991, 216 pages.  
Softcover. \$18.95. Available from  
Macmillan of Canada, 29 Birch Ave.,  
Toronto, ON M4V 1E2.

A highly detailed guide for both the new and experienced genealogists with roots in Scotland. I was most impressed with the information contained after the many notations of BEWARE. Anyone searching in Scotland should have their own copy to consult, and it could save you time and money as well as keep you on the right track with your research.

**The Family From Dunblane: An Eadie Family History.** Eadie, Norman, 1990, 186 pages. \$40.00. Available from Norman Eadie, 209 - 234 Ronald Street, Winnipeg, MB R3J 3J4.

This book is the history of the Eadie Family from 1761-1983. The list of descendants shows how the family spread from Scotland to Ontario and then throughout North America. Pictures and

individual histories make this a most attractive and interesting book.

**History of Reeds: Henry, William & Nathaniel.** Jonescu, Evelyn & Ching, Dale, 1990, 270 pages. Hardcover. \$100.00. Available from Evelyn Jonescu, 3137 College Avenue, Regina, SK S4T 1V8.

Evelyn and Dale are to be commended for their first class book. They start off telling us that "oral traditions" were an important part of the family upbringing. This tradition is backed by numerous newspaper clippings, letters and pictures. Of particular interest is the handwritten account of William B. Reed.

### **Genealogical Research Directory National & International 1991.**

Johnson, K. A. and Sainty, M.R.; 912 pages, \$29.43. Available from Mrs. J. Tyson, 94 Binswood Ave, Toronto, ON M4C 3N9.

The 1991 edition of the Genealogical Research Directory contains over 100,000 queries submitted by 5050 contributors from 25 countries. In addition there is an updated list of major genealogical societies and research repositories throughout the world. Maps and tips on how to use the directory make this directory one every genealogist should check. The SGS library has a reference and a borrowing copy.

\*\*\*

# Canadian Genealogical Societies Membership Fees & Services

Information extracted from the current editions of society journals.

**\*\* Rates shown are for individuals with family rates in brackets. \*\***

## Alberta Family History Society

- Library at University for members - W.R. Castell Library, 616 MacLeod Trail S. E., Calgary, AB, T2G 2M2. (phone no. 403-260-2600).
- Publication "Quarterly" 8 1/2" x 11", 26 pages.
- AFHS Newsletter.
- Fees: 1992 1991 1990 1989 1988  
20(25) 20(25) 20(25) 20(25)

## Alberta Genealogical Society

- Library located in Archives Reading Room at Red Deer & District Museum and Archives, 45 St.-47A Avenue Red Deer AB. Mailing Address: AGS, P.O. Box 12015, Edmonton, AB, T5J 3L2.
- Hours (members) 9:00am-5:00pm, 7:00pm-10:00pm, 1:00pm-5:00pm weekends.
- Mailing for members.
- Charge Postage.
- Publication "Relatively Speaking" 8 1/2" x 11", 24 pages.
- Database - fee for service.
- 7 Branches.
- Southwest Branch Library located 909 - 3rd Ave. N., Lethbridge, AB. Hours: open to public Tues, Wed, Fri. 2:00pm-4:30pm.
- Fees: 1992 1991 1990 1989 1988  
20(24) 15(3) 15 15  
(Seniors) 17(20)

## British Columbia Genealogical Society

- Library for members located at West Pt. Grey Community Centre, Aberthau House, 4397 West 2nd Ave. Mailing address: Box 94371, Richmond, BC V6Y 2A8.

- Hours: Tuesday & Thursday: 11:00-3:00 and 7:00-9:00, Saturday 1:00-3:00, 2nd Saturday: 10:00-3:00. Closed Saturday of long weekends.
- Borrow in person.
- Publication "Genealogist" 5 1/2" x 8 1/2", 20 pages.
- Research for fee.
- Newsletter.
- Fees: 1992 1991 1990 1989 1988  
(Senior) 15 20  
(Single) 20(24)

## Manitoba Genealogical Society

- Library located at Room 420, 167 Lombard Avenue, Winnipeg, MB, R3B 0T6. (phone no. 204-944-1153).
- Hours: M, F & Sun. 9:00am-11:30am, 12:15pm-4:30pm, T, W & T 12:15pm-4:30pm. No Sunday openings during July and August.
- Mail - Charge postage.
- 1 part-time staff.
- 6 Branches.
- Publication "Generations" 8 1/2" x 11", 24 pages.
- Fees: 1992 1991 1990 1989 1988  
25(35) 25 25 20

## New Brunswick Genealogical Society

- Mailing address: Box 3235, Station B, Fredericton, NB E3A 5G9.
- Publication "Generations" 8 1/2" x 11", 72 pages.
- No Library.
- 7 Branches.
- No projects.
- Fees: 1992 1991 1990 1989 1988  
20(25) 20 20 20

### Newfoundland Genealogical Society

- Located at Room 240, Harvey Rd. Government Building. Mailing address: Colonial Building, Military Rd. St. John's, NFLD, A1C 2C9.
- Publication "Ancestor" 8 1/2" x 11", 36 pages.
- No Branches.
- Library visit by appointment only.
- Fees: 1992 1991 1990 1989 1988  
20 15 15 12

### Ontario Genealogical Society

- Library for members at North York Library - staffed by public library and observe library hours.
- Borrow through Interlibrary Loan (members only).
- Families 6" x 9", 64 pages.
- 1 full-time and 2 part-time staff.
- 27 Branches.
- Newsletter "Newsleaf".
- Fees: 1992 1991 1990 1989 1988  
30 30 30 27

\* \$5.00 Association fee paid to OGS when joining a Branch when not a member of OGS.

### P.E.I. Genealogical Society

- Library located at PEI Museum & Heritage Foundation, Beaconsfield, 2 Kent Street, Charlottetown, PEI.
- Newsletter 8 1/2" x 11", 8 pages.
- No staff.
- No research.
- Anyone can use the library.
- Fees: 1992 1991 1990 1989 1988  
8 8 8

### Quebec Family History Society

- Library located at 173A Cartier Ave., Suite 3, Pointe Claire, PQ. Mailing address P.O. Box 1026, Pointe Claire, PQ, H9S 4H9. (phone no. 514-695-1502).
- Hours: M, Tues, & Thurs. 10:00am-3:00pm, Wed. 7:00pm-9:00pm, Sun. 1:00pm-3:00pm.
- Members only may borrow non-reference

books through inter-library loan system.

- Mail - charge for postage and packaging both ways.
- No Branches.
- 1 part-time staff.
- Publication "Connections" 7" x 8 1/2", 28 pages.
- Offer Research.
- English Speaking.
- Fees: 1992 1991 1990 1989 1988  
30(35) 30(35) 25(30) 25(30)

### Other Quebec Society Fees:

#### L'Ancetre

- Fees: 1992 1991 1990 1989 1988  
25 25 25 20

#### Memoires

- Fees: 1992 1991 1990 1989 1988  
30 25 25

#### L'Estuaire

- Fees: 1992 1991 1990 1989 1988  
10 10 10

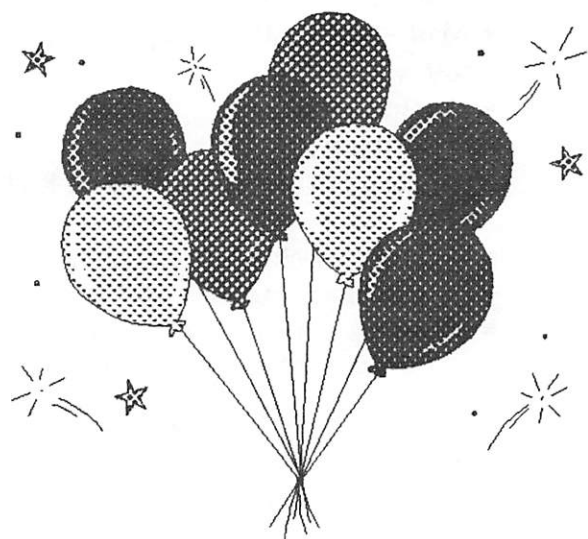
#### L'Outaouais

- Fees: 1992 1991 1990 1989 1988  
18(25) 18(25) 18(25)

### Saskatchewan Genealogical Society

- Library located at 1870 Lorne Street, Regina, SK, S4P 3E1 (phone no. 306-780-9207).
- Hours: Monday - Friday 9:30am-5:00pm, and 3rd Saturday of the month.
- Borrow Books by Mail.
- No postage charge.
- 3 full-time staff.
- 1 part-time staff.
- Research for fee.
- Librarian services - full-time .
- Publication "Bulletin" 8 1/2" x 11", 64 pages.
- 23 Branches.
- Fees: 1992 1991 1990 1989 1988  
30(30) 25(25) 22(22) 20(20) 20(20)
- Senior - \$3.00 less
- 1992 - Seniors - \$5.00 less

\*\*\*



# HAPPY ANNIVERSARY

*to  
SGS Branches  
celebrating  
their*

## **20th Anniversary:**

- Saskatoon Branch
- South-East Branch

## **21st Anniversary:**

- Moose Jaw Branch
- Regina Branch

# CONGRATULATIONS



of all lands are in large folios in the Saskatchewan Archives, Regina. These are compiled by range and township. Quarter sections are recorded serially. Names of owners are recorded with dates of entry, cancellations, or title, transfer, etc. Since we have two meridians in Saskatchewan it is

wise to note the meridian very carefully. Lands in Manitoba were surveyed from 1870; some of the survey actually overlaps into Saskatchewan as far west as the Second Meridian. The First System comes northward only to include Township 30.

---

## Archibald! What are you up to now?

*by Eunice Streeter*

The first Archibald Stutt to come to my attention was born in 1840, the 5th of 10 children of Ralph and Mary in Clarke Twp., my great grand-father. Archibald took land in Culross, got himself a wife and began his own family of 10. After the first three houses, starting out with one made of logs, home number four must have seemed grand. It had two floors with a cupola on top and a verandah surrounding three sides of its brick walls. Three of the children took to music and there was the sound of fiddles as the dancers whirled 'round that verandah some of those fine evenings. Two of the boys would rather fiddle than farm it is said.

The west beckoned to Archibald, so off he went with his wife and four of the kids, one of them married, homesteading at Stranraer, Saskatchewan. Archibald served on a committee to establish the first school out there. There were some that thought a school wasn't needed for the 13 children of school age. Well the school did open, but it wasn't long after that when Archibald came back east to finish his life.

There were other Archibalds before him too, back in Ireland. One born in 1776 in Fermanagh had five children that we know

of. The second child Archibald baptised in Drumlone in 1817 died as a little boy and six years later another little Archibald was baptized.

That Archibald gave his name to a son in 1850 at Whitepark who already had two cousins by the name of Archibald Stutt, one 6, born in Ireland and the other 20 years old born in Canada in 1830.

Archibald Stutt in Culross didn't name any of his 10 children Archibald or Archie as the name came to be known, but three grandsons inherited the name. So did two nephews. A niece gave her son the name of Archibald and he went on to pass the name Archibald Stutt on to his boy born in 1927 in Camp Borden, Ontario; possibly the last Archibald Stutt here in Canada, since christian names began to change after that.

There are three Archibald Stutts that I've learned about since beginning my family history and I have never yet met any of them. One day I picked up the phone and asked the operator for the number of a Stutt around Sudbury and pretty soon I was talking to Archie in Wanipitae who had been a brother to my Mom in Port Arthur, after

the death of her parents by the great flu of 1918. His memory was almost gone and there's a box of pictures with no names on them.

Then I began writing a distant cousin in British Columbia trying to track down a brief episode in my mother's life, in Alberta. My mother's been gone 25 years and I've been trying to reconstruct some scanty recollections. Like the one about the trestle. "I can't believe your mother was ever on it.... Did she say how old she was? I thought it was only dare devil young boys that would go on it. My brother was on it when he was a boy and when a train came he had to climb over the side and hang on till the train went by. When that bridge was built it was the highest for the length in the world." Well this was exactly the story my mother had told me. And who was this

brother I wondered? Well a look at my family tree showed me Archibald Leroy Stutt. And he is still alive, helping his widowed sister with some of the household tasks in their senior years. It shouldn't take much jogging of the memory to bring back that harrowing experience.

Did you think that was the end of Archibald Stutt? Well it isn't. That's all of them in this country that I've learned about so far but there's at least one Archibald Stutt back in Ireland. How did I learn about him you ask? Well by going to an Old Tyme Fiddling Night in Pt. Perry, that's how. Seated at the table next to me was a man who left Fermanagh Ireland in 1952. "Stutt you say? One of my pals is Archibald Stutt in Fermanagh." Apparently he'd rather fiddle than farm too, just like my grandfather.

---

## Emigrant Scheme

*submitted by Judy Venables*

The **Standard** of Friday states that "Another batch of "our surplus" population left East London for Canada last evening. The emigrants numbered 260; and consisted of skilled artisans and workmen lately employed by the Government in Woolwich Dockyard, their wives and children, with about a hundred others, selected by the committee of the British and Colonial Emigration Fund from applicants residing in various districts in the metropolis. The emigrants embarked on board the steamer Dacia, a newly built schooner - rigged vessel, perfectly fitted, and capable of making the passage across the Atlantic to the New Dominion in something under 18 days." They were sent out by the British and Colonial Emigration Society; and Mr. J. Standish Haly appeals for subscriptions to enable him to forward another batch as early as possible.

**East London Observer - 24th April 1869**



# Lightning Strikes on the Battleford Trail

by Beulah Caswell

In August of 1906, 3 men, Samuel Crossen, Jack McRae and my grandfather, Charles McFarlane, were trailing cattle, oxen and horses from Richardsen's Ranch at Consul along the Battleford Trail to North Battleford. Somewhere near Anglia they made camp and were eating a meal when they were struck by lightning.

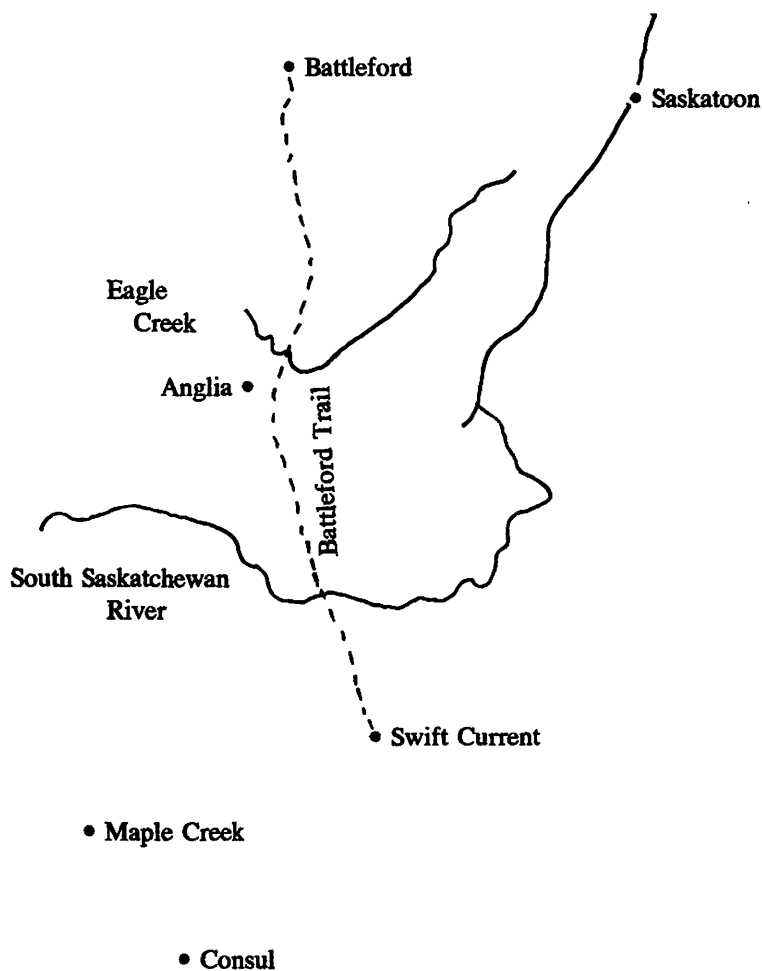
All three men, and their dog, were found dead about two weeks later by an acquaintance riding along the trail. He notified the police in Swift Current, who went to the scene accompanied by a coroner, an undertaker, and brothers of two of the men. The victims were buried at the scene of the disaster. These details were related in the *Maple Creek Signal* in September 1906. According to the book, *Merryflat and District*, they were reburied in Maple Creek Cemetery the following year.

Maple Creek Cemetery has records of the burials of Sam Crossen and Jack McRae, but nothing for Charlie McFarlane. Interestingly, there is a record of his purchase of three cemetery plots in June of 1906, the day after this three year old son, Russell, died, but there is no record of Russell's

burial either. The caretaker checked these plots, and there are no depressions to indicate burials on any of them.

Archives of the Presbyterian, United and Anglican churches were contacted for death or funeral records. There are none.

Saskatchewan Archives has no Maple Creek or Swift Current newspapers for 1906 or 1907. I found nothing in the Regina



**Leader-Post** these years. The RCMP Archives has no records pertaining to this event.

The Municipal Office at Rosetown had no information. The West Central Branch SGS could give me no information.

It does not seem logical that Sam and Jack

would have been moved and Charlie left in the original site. Neither does it seem logical that all three men were moved and only two were recorded.

If you can offer any suggestions to help me solve this mystery, I would be most grateful. Beulah Caswell, 1276 Irwin Drive, Swift Current, Sask. S9H 1Z7

---

## A Letter from the Past

*submitted by Louise Rustad*

*This letter was written by Louise Rustad's grandfather Arthur Leech of Kelvington to Louise's sister in 1966. Her grandparents had come from Portsmouth, England. Arthur Leech was a shipwright by trade.*

After twelve stormy days crossing the Atlantic, Jim and I were glad to land at St. Johns. Our first concern was to find a good meal, get used to the Canadian money and load our belongings on an immigration train travelling to Winnipeg. We arrived at Winnipeg at the end of March. A cousin living there found a comfortable rooming house for us to stay and the next day directed us to a land office where we obtained information and plans of vacant quarter sections available for homesteading. It almost appeared as if every young man was interested in future farming on a homestead. Out on the street we heard people talking of an early breakup. Naturally this was something new to us, but soon learnt it accounted for the large amount of mushy snow and water everywhere. We found our English boots poor protection for these conditions and bought rubber overshoes, an article which we had never

seen or heard of but found very necessary.

The next day Jim and I boarded the train for Wadena. The land for homesteading given us by the land office lay north of here. So Jim and I started out with a packet of biscuits, there were no roads, only one trail, which was the old Indian Nut Lake trail, we could not get lost as long as we stayed on it. We found out that it was not easy going, there was plenty of snow water along the route which we had to travel around. We found ourselves lonely travellers, the only signs of life we could see were the crows and rabbits. We eventually came to Duck Creek, our few biscuit were gone and the sun was beginning to set, and being both tired and wet, wondered where we should spend the night. However we kept going till in the distance we saw buildings on high land. But before us and the buildings was a long stretch of water (which would be just

about west of Tommy Anderson's farm). Well, it appeared too great a distance to walk around it, so we just ploughed right across it, and found that its deepest part was up to our waist. On reaching the buildings, we found it was a log house and barn. We were greeted by a swarm of dogs and noticed faces looking at us through the window. Our knocking at the door brought a large man with hair reaching to his shoulders, his trousers held up by a coloured sash. We asked permission to spend the night in his barn. Two large hands reached out and we were dragged into a large room filled with Indians clothed in Hudson Bay blankets and moose hide leggings (our first sight of Indians). We learnt that the man's name was Antoine Genaille, and he welcomed us with - "the barns for horses and come in." He proved himself to be a friend and got his wife which he called "His Old Queen," to prepare use a meal, which consisted of tea, rabbit and bannock. Of course such a meal we were not used to, but we being wet and hungry, felt we could tackle anything. The Indians appeared to be out for a good time, during the evening they danced, at least the squaws did while the men sat on the floor and kept time with sticks of wood. We were made comfortable with the best they had and next morning Antoine said he would hitch up the democrat and show us the land. All the family were out to see us depart. Such people were new to us and no doubt we were a kind of curiosity to them with our English clothes and speech. Well Antoine was a good scout, showing us where to locate, etc. At one time he left us for a while to look for the survey line. While Jim and I waited for him to return, we saw a rabbit squatting in the tuft of grass. Coming from the old country we thought it quite the proper and right thing to be armed with a revolver. So this was a good occasion to try out marksmanship on the rabbit. I fired a few shots, but the rabbit remained safe. What could be wrong? I

examined the gun and somehow pressed the trigger. The pistol was just 3 to 4 yards from the team and pointed right at them. We naturally thought we were in trouble and waited for one of the horses to drop, but they remained standing and we could not see any signs of blood. Evidently the horses shared with the rabbit the same luck. A good job we had enough sense to realize that the revolver was of no use, yet dangerous, so we threw the damned thing away.

Sometime in November 1906, we started out from Yorkton with a pair of green steers hitched to a sleigh with all our belongings. It was some adventure, which we enjoyed, stopping nights at farms along the trail. By the time we reached Wadena the steers were broken into harness, so we now had a team of oxen. We loaded up with necessary provisions, a little lumber to make a door, and a small table, and a small window before starting out for the homesteads. We eventually reached the Hudson Bay Post where we luckily obtained a place to stay while we built a place to live in. Although we had never cut down a tree, yet it did not take long to cut down enough poplar logs to build the walls, also poles for the roof. On top of the poles we placed hay and sods. Meanwhile we had visited neighbours two miles south and became acquainted with the Adams family, buying from them two loads of hay, also getting sods for the roofing which they had ploughed before freeze-up. Plastering between the logs was a bit of a problem as the ground was frozen making it difficult to get the necessary clay. However by staying with it we were ready to move in after two weeks of work, which was all new to us. Our building was 20 x 20 feet with a partition of poles in the centre so that we were able to give our oxen shelter. Of course our house was very cold and froze up every night, but the oxen helped to provide a little heat which was necessary as we only had a small sheet iron cook stove.

Our next job was to get substantial logs to put up decent buildings. There were plenty of good spruce near the Hudson Bay Post. An old timer was kind enough to show us how to cut, skid and load the heavy logs. Every day, no matter how cold, we took the oxen, and sleigh and brought back a load of logs. We were able to stand the cold that first winter, sometimes the store-keeper would be surprised to see us come along and say, "Do you boys know it is 40 degrees below?" However it could not have been the diet we lived on that kept us warm, for our meals were poor except when we were invited for supper at the storekeeper's. His name was Jenkins, and the good lady appeared to enjoy giving us supper, maybe just to hear us talk, we must have been a curiosity to her.

When spring arrived we started hewing our spruce logs and putting up the walls of two houses with dovetailed corners, all strange work to us. During the summer we ploughed a few acres, planted a garden, etc. Sometime in August Jim went to Winnipeg to meet his parents, Mr. & Mrs. Saunders, Nell, his fiancée and my wife, Elizabeth, his sister. Meanwhile I was preparing the house ready to receive them, not knowing exactly when they would arrive, or how they would travel. They must have been ahead of my

reckoning, for I remember having just finished washing the floor when I heard whoops and yells down the trail, they had arrived. I was bare-footed like the sailors on board a ship scrubbing decks, no time for putting on socks, just shoes and outside to let them know there was someone home.

They had travelled by horse team and wagon all the way from Wadena - 32 miles, forded Pipestone Creek and taken the rough bumps along the way. But there did not appear to be any complaints, it was all a novelty especially the house with so little furnishings, nothing resembled what they had been used to. They even had to ask what our little cookstove was.

More people were arriving to take up homesteads and we soon gathered together, and organized the building of bridges and the starting of roads, also holding country dances and picnics in summer. Treaty day on the Indian Reserve was a holiday for us and went up to the reserve to see the Indians celebrate. They were dressed up for the occasion with lots of coloured paint on their faces. In their blanket and moose hide clothes, they certainly looked more Indian than they do now, and happier, we found them friendly and honest.

---

## Genie Trivia

- the usual colour worn by Irish brides was blue and surprisingly brown. Green was disliked because it was said to be unlucky.
- the practice of tying a hen about to lay an egg to the bed-post on the marriage night helped to ensure fertility.

*Through the Branches, Newsletter Battleford's Branch, SGS, Vol. 4, No. 1*

# FAMILY CONNECTIONS

## *A glimpse of the Dalrymple and Heron Families*

by Lillian Dalrymple

Both these families have a long association with Moose Jaw and Archydal areas. The families have added much to the history of the Archydal Community. Archydal has gone the way of many smaller communities, whereas there is nothing to mark its place. Once it was a thriving community with curling rink, ball games, and Fall fairs, all part of the dedication and struggle of the Dalrymples and many others who are part of all our heritage.

The Wesley Church and Pioneer School activities benefited greatly by dedicated attendance and participation. Marriages were performed in the church. The marriage of William Dalrymple and Lillian Heron in the church manse, connected the two families.

The Dalrymple Farm situated at 2-18-28 W. of 2nd meridian, was homesteaded by Archie Dalrymple in the 1880's. They first lived in a tent while their house measuring 12' by 16' was being built. (This house is now in the Pioneer Village, south of Moose Jaw.) In 1903 a large brick house was built, which is still being used. It has been updated and modernized through the years, but is still the original building. In 1905 a large barn was built, and as years passed other buildings were added.

Archie Dalrymple married Catherine Getty April 21, 1907. Nine children were born to this union. The farm passed on to William Dalrymple in 1935. William and Lillian were married in 1939. The farm went to Grant (their son) in 1972, and now, since Grant's untimely death in 1989, is farmed by our

daughter-in-law and family.

The Heron family came to the North West Territories (Sask.) in 1889, homesteading on S.W. 1/4 of 22-17-27 W. of 2nd meridian. The family came from Cass City, Michigan. There was William Heron, his 2nd wife, Eliza and 7 children. Richard Heron was born in 1890. Eliza died in 1912 and William married Mary Morrison.

Florence Cook was born in Proton County, Grey Township, Ontario, Dec. 16, 1892. She came west in 1911 to help a cousin, Violet, who was married to Matthew Heron, with her family of small children.

Florence and Richard were married in 1913. To this union were born three girls; Lillian, who married William Dalrymple; Reta, married Walter Acton and lives at Grayburn, Sask.; and Mildred, married Walter Boyd, 2nd marriage to Bert Ogilvie and lives in Toronto, Ontario.

The buildings on the Heron farm are gone now, but the farm is still in the family, belonging to Judy Dalrymple, (wife of Grant) and daughter-in-law of Lillian.

I would like to gain more information on mother's family of 'Cook'. The family included Florence, who married Richard Heron in Sask.

Charles married Myrtle?, lived in Winnipeg--Nothing more known.

Edward married Pearl, 2 daughters; Edra

# Dalrymple & Heron Family

- 2 Douglas Grant DALRYMPLE-2-----  
BORN: 29 Dec 1944  
PLACE: Moose Jaw,,Sk.  
MARR: 1 Apr 1967 --2  
PLACE:  
DIED: 31 Mar 1989  
PLACE: University Hosp.,Saskatoon,Sk.
- 3 Candace Noelle DALRYMPLE-1-----  
BORN: 9 Dec 1969  
PLACE: Moose Jaw,,Sk.,Can.  
MARR: --1  
PLACE:  
DIED:  
PLACE:  
-----  
Spouse
- 3 Judith Arlene WOODS-3-----  
BORN: 26 Nov 1944  
PLACE: ,Winnipeg,Man  
DIED:  
PLACE:
- 4 William Joseph DALRYMPLE-4-----  
BORN: 13 May 1905  
PLACE: Archydal,,Sk.  
MARR: 29 May 1939 --3  
PLACE:  
DIED: 24 May 1978  
PLACE: Moose Jaw,,Sk.
- 5 Lillian May HERON-5-----  
BORN: 14 Aug 1916  
PLACE: Moose Jaw,,Sk.  
DIED:  
PLACE:
- 6 Edwin John WOODS-6-----  
BORN: 27 Sep 1913  
PLACE: Winnipeg,,Man  
MARR: 5 Jul 1941 --4  
PLACE:  
DIED:  
PLACE:
- 7 Luella FLEWELLING-7-----  
BORN: 8 Feb 1914  
PLACE: Fergus,,Ontario  
DIED:  
PLACE:
- 8 Archibald DALRYMPLE-8-----  
BORN: 11 Nov 1861  
PLACE: Hibbert,,Ont  
MARR: 21 Apr 1897 --5  
PLACE:  
DIED: 12 Sep 1933  
PLACE: Moose Jaw,,Sk
- 9 Catherine Marion GETTY-9-----  
BORN: 23 Jun 1871  
PLACE: ,McKillop,Ont  
DIED: 4 Aug 1941  
PLACE: Moose Jaw,,Sk
- 10 Richard Grant HERON-10-----  
BORN: 28 Jul 1890  
PLACE: Moose Jaw,,Sk  
MARR: 18 Feb 1913 --6  
PLACE:  
DIED: 12 Sep 1968  
PLACE: Moose Jaw,,Sk
- 11 Florence May COOK-11-----  
BORN: 16 Dec 1892  
PLACE: Proton Twp.,Grey Co.,Ont  
DIED: 12 Sep 1982  
PLACE: Moose Jaw,,Sk
- 12 Percy Lionel WOODS-12-----  
BORN: 10 Aug 1882  
PLACE: Rushden,Herts,,England  
MARR: 17 Jun 1908 --7  
PLACE:  
DIED: 17 May 1972  
PLACE: Winnipeg,,Man,Canada
- 13 Rose Hannah GILL-13-----  
BORN: 25 Oct 1882  
PLACE: ,,England  
DIED: 28 Mar 1978  
PLACE: Winnipeg,,Man
- 14 Henry Albert FLEWELLING-14-----  
BORN:  
PLACE: Garafraca Twp.,,Ont  
MARR: --8  
PLACE:  
DIED: 1916  
PLACE: Fergus,,Ont
- 15 Mary AIKEN-15-----  
BORN: 30 Aug 1881  
PLACE:  
DIED: 1916  
PLACE: ,,Ont



and Willoughby; address unknown.

Lydia married Herbert Maxwell; one daughter, Dorothy; buried in Drayton, Ont. any further family? Also Reta who drowned at age four.

Are there members of the Heron Family I don't know of? I would be interested to hear from anyone who thinks they are connected.

\*\*\*



## The Gopher Hole

Do you have a research problem you don't know how to solve?

Have you come to a dead-end and don't know where to go from there?

Well, why don't you pose your question(s) to our readers.

Surely someone out there has an answer or an idea to help you out of your Gopher Hole!

Please send your questions and/or answers to:

THE GOPHER HOLE  
c/o Bulletin Editor  
P.O. Box 1894  
Regina, Saskatchewan  
S4P 3E1

If you have the answer to a question please cite the source of your information if possible.

\*\*\*\*

### Questions:

1991:01

Where in Sweden are the villages of Håkanbo and Lingbo?

1991:02

How does one go about locating someone in Japan? (The person is presumed still living).

1991:03

What was South African Scrip? Apparently a lot of settlers used this to buy their land.

# News of the Family History Library

## Salt Lake City, Utah

*The information used in this column is taken from News of the Family History Library, a publication of the Family History Department of the Church of Jesus Christ of Latter-day Saints.*

### **Genealogical Collections: State Wide and Provincial**

Most state and provincial archives, historical societies, and genealogical societies have special collections and indexes of genealogical value. Usually these must be searched in person. Many collections have been microfilmed, however, and are available at the library or through family history centres. Following are examples of some of the newer collections of state wide or provincial interest.

### **Genealogical File, Beaton Institute of Cape Breton College, Nova Scotia (9 films)**

An example of a valuable but perhaps unknown genealogical collection is housed in Nova Scotia. The files are alphabetically arranged and contain mostly pedigree and family group record forms. This collection is described in the Family History Library Catalog under "Nova Scotia - Genealogy."

### **Ontario Biographical and Genealogical Card Index (13 Films)**

This index on 43,000 cards cover the years 1780-1869. It was recently microfilmed at the Archives of Ontario in Toronto, and consists of personal names extracted from baptismal records, biographical sketches, cemetery records, land records, family histories, funeral notices, marriages, wills, and other sources. The index is listed in the catalog under "Ontario - Genealogy - Indexes."

### **Master Name Index, Prince Edward Island Museum and Heritage Foundation (60 Films)**

This index has about 500,000 names extracted from the following types of documents for the 1700s to 1900s: census returns, marriages, inquest records, land records, church records, passenger lists, newspapers, atlases, funeral home records, personal records, business records, school registers, and lodge records. This collection is listed in the library catalog under "Prince Edward Island - Genealogy - Sources - Indexes."

### **Applications for Illinois Prairie Pioneer Certificates (23 Films)**

Two sets of these microfilms were made, from the original applications at the Illinois State Genealogical Society. The applications include ancestral family forms and lineage charts.

Several generations may be mentioned on one form. The collections are listed in the catalog under "Illinois - Genealogy."

### **Papers for Iowa Pioneer Certificates (11 Films)**

About 4,000 Pioneer Certificates have been issued to descendants who furnished proof that their ancestor arrived in Iowa prior to 1857. The materials in this collection include pedigrees, family charts, wills, marriage records, land records and family histories. Alphabetically arranged, the original files are at the Iowa Genealogical Society in Des Moines. This new acquisition will be listed in the catalog under "Iowa - Genealogy."

### **Iowa Genealogical Society: Surname Collection (31 Films)**

An extensive collection of family data is on 3 by 5 inch cards at the Iowa Genealogical Society. It is similar to a research exchange file. Members of the society filled out cards for their ancestors. This new acquisition will be listed in the catalogue under "Iowa Genealogy."

### **Michigan Genealogical Council: Centennial Family Certificate Applications (81 Films)**

Ten thousand applications were filed by descendants of ancestors living in Michigan before 1876. The applications, alphabetically arranged by the ancestor's surname, include lineage charts and source references. The originals are at the Library of Michigan. This collection is listed in the catalog under "Michigan - Genealogy" along with other similarly valuable collections.

### **British Directory Collection**

Most researchers looking for ancestors who lived in the United Kingdom's larger cities soon discover the importance of knowing an ancestor's address. For example, two researchers searching the same parish in the 1861 census discover that there are six films that may contain the information they are looking for. But one searcher, armed with the knowledge of his ancestor's street address, is able to narrow his search to one film. His success is tied to the effective use of the British county and city directories that enabled him to find that address.

The library has British directories from as early as the mid-18th century, although most are from the 19th century. The collection includes post office, occupational, business, commercial and court directories. They contain alphabetical lists of tens of thousands of residents and their addresses. City directories also provide useful information on the occupation, rank or profession on an

ancestor.

British directories are listed in the Locality section of the microfiche edition of the Family History Library Catalog under England, County - Directories; England County, Town/Parish - Directories.

Other records that provide street addresses or place of residence in large cities include church registers, civil registration certificates, probate records, poll books, parish chest records and newspapers.

### **New Death Records and Indexes from Illinois**

By 1918, over 95 percent of all deaths in Illinois were registered each year. The Family History Library now has a copy of the alphabetical index to all registered deaths in Illinois between 1916 and 1938. This index usually provides the name, gender, race, date and place of death, filing date and certificate number. The index is available on 191 microfiche (FHL microfiche 6016862).

The death certificates are also available on several hundred microfilms. The certificates may reveal the birth date, parents' names and birthplaces, cause of death, place of burial and informant. The March 1990 edition of the Family History Library Catalog lists the certificates from 1916 to 1930. In the next few years additional records to 1940 and certificates from Chicago from 1923 to 1945 will be filmed.

When using a certificate number from the state wide index, please note that the first two or three digits do not appear on the actual certificate. Additional details on using the index and records are found in the Family History Library Catalog under the heading "Illinois - Vital Records."

Death records specifically for the Chicago area are also available.

# Old Leader Notes

*Items of Local Interest*

*-submitted by John Marley*

*1901 - continued from Vol. 21 No.4*

- Benson                      10 Oct 1901, Mr. James Benson of the Imperial Bank Strathcona, is spending his holidays in Regina with his parents, Sheriff and Mrs. Benson. Another son, Mr. Gowan Benson, is also visiting at home just now.
- Briggs                      25 Jul 1901, The train on which Mrs. T.A. Briggs was travelling, enroute to visit her parents at Killarney, Man., met with an accident near Wawaness. No serious injuries occurred.
- Child                      26 Dec 1901, Mr. J.T. Child, of Lethbridge, formerly of the Territorial public works department is spending Christmas with his family in Regina.
- Colbeck                    12 Dec 1901, Mrs. Colbeck, who has been spending the summer with her son in Regina, returned home to Toronto Junction, Ont., on Monday last.
- DeGear                    10 Oct 1901, Mrs. J.C. DeGear, of Battleford, a sister of Mrs. John A. Real, has come to Regina in order to get medical treatment.
- Le Jeune                   26 Dec 1901, Mrs. Le Jeune is spending Christmas in Regina and will leave next day to join her husband at the Chateau Frontenac, Quebec. In their removal the town loses one of its pioneers.
- Martin                    31 Jan 1901, Mr. Cornelius Martin of Wascana, is on a visit to his sister, Mrs. James Sullivan at Warwick near Watford, Ont.
- Miller                    28 Feb 1901, Mrs. Jas. Miller is in Moose Jaw on a visit to her son, Mr. Thos. Miller of the Times.
- Simpson                   9 Aug 1901 Mr. M.H. Simpson, formerly station agent at Swift Current accompanied by Mrs. Simpson and family of three boys, passed through Regina last Friday morning enroute to Virden, from an extended visit to Mrs. Simpson's parents in Kootenay, BC.
- Wroughton                28 Feb 1901, Mrs Wroughton, wife of Insp. Wroughton, N.W.M.P., has received word from Dawson City that her sister, Mrs. Wood, wife of Supt. Wood, in command of the Yukon Police, is seriously ill.

1902

- Ambrose 10 Apr 1902, Pincher Creek Echo. - Mrs. Bragg, sister of Mr. E.G. Ambrose, with whom she has been visiting for some months, left for Regina with her son on Wednesday night.
- Baker 5 Jun 1902, Captain Montague Baker, N.W.M.P., is in Regina on his way to England where he will reside in future.
- Birkbeck 2 Jan 1902, Mr. Thos. Birkbeck, formerly C.P.R. agent at Regina latterly of Rat Portage, has been appointed to a high railway position at Spokane.
- Bissicks 10 Apr 1902, Mr. F.J. Bissicks, postmaster of Cotham, visited Mr. Wm. Trant last week having come to see his little Dorrie Bissicks.
- Blake 20 Mar 1902, A man whose mind has apparently become unhinged arrived in Regina last Thursday and registered at the Windsor as J.H. Blake, Galway, Ireland. He had been in South Africa and came from there to Virden, Man., and thence to Regina. He is labouring under a hallucination that King Edward VII is seeking his life.
- Bragg 10 Apr 1902, Pincher Creek Echo. - Mrs. Bragg, sister of Mr. E.G. Ambrose, with whom she has been visiting for some months, left for Regina with her son on Wednesday night.
- Bryant 2 Jan 1902, J.A. Bryant has arrived at Strathcona from Regina to take charge of the school there.
- Burnett 2 Jan 1902, Miss Burnett of the Regina Normal School staff spent Christmas at home in Moose Jaw.
- Clark 8 May 1902, Mr. S.A. Clark and his son Fred left for Saskatoon on Monday where they will engage in the hardware business.
- Copsey 24 Jul 1902, After a short but pleasant visit with her sister, Mrs. Copsey, of Regina, Miss Maud Hardy returned home to Qu'Appelle on Tuesday evening's train.
- Craft 24 Jul 1902, Mr. and Mrs. E.D. Wall (nee Craft) returned to Regina on Friday morning.
- Cressman 3 Apr 1902, Mr. Cressman, of Waterloo, Ont., arrived in Regina on Saturday and will make his home here in future, he having come to take charge of the grocery department of McCarthy & Co.'s store.

- Cruickshank** 11 Sep 1902, Mr. Robert Cruickshank, of Rush Lake, son-in-law of Mr. Wm. Trant, passed through Regina on Tuesday enroute home from Winnipeg.
- Cummings** 18 Sep 1902, W.B. Cummings, B.A., a son-in-law of Dr. Douglas, M.P. for East Assiniboia, has just accepted a call to Carberry Presbyterian church.
- Dill** 3 Apr 1902, Mr. J.P. Dill, ex-M.L.A., of Wolseley, has removed to Fernie, B.C.
- Duff** 13 Nov 1902, Miss Duff of the commercial telegraph office returned to Regina on Wednesday morning from a visit to her home at Crystal City.
- Duncan** 2 Jan 1902, Mr. & Mrs. W.H. Duncan have gone to spend the season's holidays at Almonte, Ont. It is nineteen years since Mr. Duncan visited the old folks and the old home.
- Duncan** 17 Jul 1902, Mr. J.M. Duncan, Mrs. Duncan and Miss Duncan, of Pense, arrived in Regina last Friday to take up their residence here and will shortly move into their house on Broad Street, which of late has been occupied by Mr. W.S. Hooper.
- Ellis** 4 Dec 1902, Mr. Ellis and Mr. Morrison of the Bank of Montreal staff left for their new posts on Sunday, the former going to Lethbridge and the latter to Toronto.
- Fenwick** 13 Nov 1902, Miss Flora Fenwick of Kingston, Ont., arrived on Tuesday morning from Hamilton on a visit to her brother Mr. A.M. Fenwick, inspector of schools.
- Haney** 13 Mar 1902, Carberry Express - Miss Nora Haney, of Regina Normal School, is visiting her sister, Miss Mabel Haney, of Linwood, at Mr. S. Jackson's.
- Hardie** 17 Jul 1902, Rev. F. Hardie, Methodist Minister at Ymir, B.C., spent several days in Regina visiting his cousin, Mrs. P. Copsey.
- Hardy** 24 Jul 1902, After a short but pleasant visit with her sister, Mrs. Copsey, of Regina, Miss Maud Hardy returned home to Qu'Appelle on Tuesday evening's train.
- Hord** 14 Aug 1902, Another immense farm is to be started in territory tributary to Regina, Mr. F.B. Hord of Central City, Neb. The general manager will be Mr. E.J. Wadell, of Central City, who will reside at Girvin.



- Hutcheon** 8 May 1902, Mrs. O'Connor and Miss Hutcheon, of Guelph, Ont., arrived in town on Friday and are the guests of Mrs. E. McCarthy. They will, however, reside permanently in the west, as Mr. O'Connor will engage in ranching near town.
- Jowett** 2 Jan 1902, W.A. Jowett, formerly of Nelson and Winnipeg, but who for the past two years resided in England, has decided to return and make Nelson his home. He sailed on 16 Dec 1901 from Liverpool to New York, on the steamer Celtic.
- Macdonald** 30 Jan 1902, Miss Macdonald of Buffalo, N.Y., is on a prolonged visit to her aunt, Mrs. C.J. McCusker, Regina.
- Macdonald** 3 Apr 1902, Mr. Alex R. Macdonald and Donald A. Macdonald, of Buffalo, N.Y., brothers of Miss Jeane Macdonald, while enroute to Fort Gibbon, Alaska, stopped off in Regina on Tuesday to visit their aunt, Mrs. C.J. McCusker.
- Malone** 8 May 1902, Master Gratton McCarthy, son of E. McCarthy, of Regina is visiting his uncle, Mr. T Malone at Cochrane.
- Maveety** 24 Jul 1902, Master Jack Maveety, a brother of Mr. J.D. Maveety of The Leader staff arrived in Regina on Sunday from Medicine Hat on his way home to Prince Albert.
- McCarthy** 8 May 1902, Master Gratton McCarthy, son of E. McCarthy, of Regina is visiting his uncle Mr. T. Malone at Cochrane.
- McCusker** 3 Apr 1902, Mr. Alex R. Macdonald and Donald A. Macdonald, of Buffalo, N.Y., brothers of Miss Jeane Macdonald, while enroute to Fort Gibbon, Alaska, stopped off in Regina on Tuesday to visit their aunt, Mrs. C.J. McCusker.
- Mcdonald** 30 Jan 1902, Miss Mcdonald of Buffalo, N.Y., who is on a prolonged visit to he aunt, Mrs. C.J. McCusker, Regina.
- McFarlane** 23 Jan 1902, A former resident of Regina is in town on business. Mr. M.J. McFarlane, barrister of Almonte, Ont. He will be remembered as a former partner with Mr. W.H. Duncan, as farmers. Mr. McFarlane was through the rebellion, being Col. Otter's transport driver, and at the scrimmage at Cut Knife Creek his horse was shot while he was unhitching.
- McKinnon** 23 Jan 1902, Jas. A. McKinnon , the Normalite, has been appointed principal of Lacombe school, Alberta. Mr. McKinnon is a native of Port Elgin, Ont., took model training at Kincardine, Ont., and taught school for one year at Tiverton, Ont.

## - QUERIES -

Queries of a reasonable length are published gratis for members. Non-members may submit queries of up to sixty 60 words in length for a fee of \$5.00.

---

- Mapes Wilson** Seeking information on five brothers or sisters born to Mr. James Wilson and Mrs. LuLu F. Wilson (nee Mapes). James Wilson born in Whitewood, SK. and wife LuLu Mapes, born in Ingersoll, Ontario. I, James Quenton Wilson was born in Weyburn, SK., Feb. 1922, was put in orphanage at age 3 or 4 - adopted out of orphanage at age 6. Any information concerning the above, would be welcome.  
*James W. Falconer, Box 1055, Dryden, Ont., P8N 3E3.*
- Evans** Seeking information about Arthur Valentine Evans son of John Evans and Letitia Cox of Oswestry, Shopshire, Eng. Is anyone else searching the Evans family?  
*Ms. Mabel B. Evans, 1626 Cumberland Ave., Saskatoon, SK. S7H 2M5.*
- Lee Pitt** Seeking relatives and descendants of Harry Lee and his wife Emma. One daughter Alice m. William Ernest Pitt.  
*Ms. Mabel B. Evans, 1626 Cumberland Ave., Saskatoon, SK. S7H 2M5.*
- Lee Pitt** Looking for information about William Pitt m. Alice Lee approximately 1906 in Sask. - Regina, Saskatoon or Borden, farmed until 1937 when they returned to Worcester, Eng.  
*Ms. Mabel B. Evans, 1626 Cumberland Ave., Saskatoon, SK. S7H 2M5*
- Folkerts Hinrichs Oltman Janssen** Anyone researching these names Folkerts, Hinrichs, Oltman and Janssen? Interested in corresponding with others interested in these surnames.  
*Marian Fornwald, Box 304, Lampman, SK. SOC 1N0*
- Bloch Klatt Lochstein** Interested in making contact with other researchers interested in the surnames Klatt from Posen area, and Lochstein and Bloch from Rovno area.  
*Marian Fornwald, Box 304, Lampman, SK. SOC 1N0*
- Sylvester Webster** John Sylvester and wife Mary Webster, m. 1858?, lived in town of Morton in South Crosby 1860, probably employed at the sawmill. Seek marriage date or any information on John and Mary including their brothers and sisters.  
*Gail Wiebe, Box 430, Carberry, Man. ROK OHO*

Sparling  
Sylvester

William Henry **Sparling** m. Mary Ellen **Sylvester**, lived at Kennebec, Ont. M. 3 April 1901 at Thorne Twp., Pontiac County, Que. Family Earl, Henry, Fred, Ervin, Carrie & Mary. Welcome any information on family. *Gail Wiebe, Box 430, Carberry, Man. ROK OHO.*

Dyck  
Driedger  
Giesbrecht  
Janzen  
Mertens

Need date of immigrations and name of ship that Old Order Mennonite immigrants from Russia, Abraham **Giesbrecht** and 1st wife Helena **Martens** arrived (approx. 1876). They first went to West Reserve, Man. Abraham was one of the first Mennonites to settle in Sask. in the Rostern area. He m. 2nd. Anna **Dyck**. Others who may have immigrated at the same time were: his mother Elizabeth **Driedger** and 2nd husband Johann **Janzen** and his two brothers Jacob and Cornelius **Giesbrecht** and families. Any information welcome.

*Jean C. Giesbrecht, R.R. #4, Box 73, Reimersite, Quesnell, BC V2J 3H8.*

Armstrong  
Baker

George Walter **Baker**, b. 1840, m. Deborah **Armstrong**, b. 1844, m. 13 Jan. 1862 at Catholic Chapel, district of Portsea, Isle of Wight. Deborah's father, Francis **Armstrong**, was an officer in the Royal Navy. They had 4 daughters but know of only Margaret and Ethel Rose who was b. in 1872. George and Deborah separated and may have divorced. Would like to know what happened to George.

*Eveline Jenkins, 3624 Albert St., Regina, SK. S4S 3P8.*

Dooley  
Drinnan  
McIntyre  
Rehill  
Rivington  
Simons

Wish to contact any descendants of Robert **Dooley** 1840-1896 and Sally **Rivington** 1845-1909, from Huntley Township, Ont., buried Wawota, SK. Children: Louisa m. Jack **Rehill**; Jack m. Bella **Drinnan**; Richard m. Sarah **McIntyre**; Annie Mary m. Jack **Simons**.

*Mrs. Mary E. Wallace, R.R. 2, Mount Hope, Ont. LOR IWO.*

Gerrond

Need any info on ancestors of **Gerrond** - William, James, John or others, originated Scotland, to Ont., then Man. and on to Prince Albert area of Sask. in the 1880's.

*Lil Reddon, Box 235, Carberry, Man. ROK OHO.*

Dayle  
Gray  
Kelly  
Walsh

Looking for any information on Walter **Walsh** b. 1848?, St. Johns, Newfoundland, d. 20 Apr. 1909, Kenora, Ont., m. Martha **Gray**, b. 18 Jul 1852, St. Johns, Newfoundland, d. 13 Mar. 1933. Parents believed to be James **Walsh** and Mary **Dayle** or **Kelly** from Ireland.

*Charlie P. Poitras, Box 1424, Biggar, SK. SOK OMO*

Maierhoffer  
Pekar

Seeking information about Josef **Pekar** and Ludvina **Maierhoffer** who came on the Royal George in 1912, had 16 children. Ludvina had a brother who is buried in Regina. Need information to fill in gaps please.

*Kathy Rieberger, S.S. #1, Site 19 - 63, Cranbrook, BC. VIC 4H4*

- Bartman**  
**Mayson**  
**Fedewich**  
**Medinski**
- Looking for the names of the aunt and uncle, who resided at Davis in 1931, of my great-uncle, Neil Joseph **Mayson**. Their daughter, Bertha,, m. Dan **Fedewich** on 19 Apr. 1931. The aunt could be my uncle's godmother, Mary **Medinski**, of Borschiv, Ternopil, Ukraine, or the uncle his godfather, John **Bartman**, also of Borschiv. Wish also to correspond with relatives.  
*Cory Matieyshen, Box 58, Shipman, SK. SOJ 2HO*
- Mead**  
**Ross**
- Seeking information on Donald Proctor **Ross**, b. c.1831, Ancaster, Ont., moved to Yorkton, Sk. in 1904, after his wife Lavinia **Mead** died, to make a home for his 2 sons - Walter M. and Fred **Ross**. Only information to date is a land record for Walter M. **Ross**, SW30-5-29-W3, at the Sask. Archives, but the file was missing, reference #136362A. Would like to know when and where Donald P. **Ross** is buried, where the family lived and are there any descendant living.  
*Mrs. Helen Hancock, 10 Shaneen Blvd., Scarborough, Ont. MIR 1B5*
- Alcock**  
**Huggins**  
**Saunders**
- Seeking info on William Robert **Saunders** and wife Fannie **Huggins**, known to have lived in Mervin, Sask. area c. 1909. they had five sons: William Robert, Jack, Tom, George and Jim. Son William born March 1883, Winnipeg? He married Ethel May **Alcock** in Kenora, 1909. I would like to confirm birthplace of son William. Any other info would be appreciated.  
*Mrs. Carole Bruce, 963 Niluht Rd., Campbell River, BC, V9W 1W8*
- Gooch**  
**Hubbard**  
**Hubbart**  
**Franklin**
- Elizabeth **Hubbard** (**Hubbart**) daughter of John **Hubbard** and Elizabeth **Gooch** and step-daughter of John **Franklin** of Boston, Mass. USA. Who did she marry?  
*Evelyn R. Ballard, 223 Ruth Street East, Saskatoon, SK. S7J OK9*
- Franklin**  
**Gooch**
- John **Franklin** Jr. chr. 17 June 1716, Boston, Suffolk Co. Mass. USA. Son of John **Franklin** Sr. and Mary **Gooch**. He died at sea in early manhood. Was he married? Did he have family?  
*Evelyn R. Ballard, 223 Ruth Street East, Saskatoon, SK. S7J OK9*
- Sullivan**
- Seeking information on James **Sullivan** b. 1882 in North Dakota, and moved to Sask. in early 1900's. He was a great baseball player, ran a restaurant, homesteaded S.E. 1/4 of 20-29-27 in 1910 and was in 1914 War. James died at Lampard, SK. 04 April 1955.  
*Kathy Rieberger, S.S. #1, Site 19 - 63, Cranbrook, BC. VIC 4H4*
- Rieberger**  
**Thauberger**
- Any information concerning Peter **Rieberger** and Christina **Thauberger** who came from Rastadt (Russia) to the Balgonie/Kronau area.  
*Kathy Rieberger, S.S. #1, Site 19 - 63, Cranbrook, BC. VIC 4H4*

# The Computer Corner

*by Len Fertuck*

The choice of computer hardware for the genealogist is not an issue if you already have access to a computer. It is difficult if you are thinking of getting a computer to support your genealogical research. There are many kinds of computers and accessories, and each has there advantages and disadvantages. The components required are a computer, a screen and a printer. This article will examine some of the choices that have to be made.

## COMPUTERS

There are three common kinds of computers available on the market. These are the Apple II, the Apple MacIntosh and the IBM PC.

The **Apple II** is a relatively old design that is becoming obsolete. It does not have enough memory to hold programs that can deal effectively with the complexities of a genealogical database. There may be programs that will do some things for the genealogist, but they are not satisfactory for serious work and will not be discussed in this column.

The **Apple Macintosh** is a powerful computer with a simple interface that uses a keyboard to enter data and a mouse to enter commands. This interface is very easy to use so has gained wide acceptance. Both text and graphics can be combined in almost any output to produce interesting copy. The MacIntosh is relatively costly because of its power and because there are no competitors making a compatible machine. Software is not as common as for the IBM PC, but it is

usually of high quality. This author is not familiar with whatever genealogical software is available for the MacIntosh and will not comment further. Readers who have used MacIntosh genealogical software are invited to share their experiences.

The **IBM PC and compatibles** are the most common personal computers. They are available in a wide variety of brands and capacities ranging from some that sell for as little as \$1,000 with screen and printer to some that sell for \$25,000. Even the cheapest are able to handle most of the genealogical software available for this class of machine.

The different IBM compatible machines are characterized by their processor, their memory, and their graphics screens.

**Processors** are the thinking part of the computer. The original Intel 8088 processor ran at a speed of 4.88 Megahertz (Mhz) and could support memory of up to 640 Kilobytes (Kb). A Kilobyte can hold 1024 alphabetic characters. Many early computers were effectively limited to 512Kb by the design of their internal circuitry. Even this is enough memory to hold any program that the genealogist might need.

Newer processors have been developed that are compatible with the 8088 processor, but have more functions and higher speed. The 80286 processor was used in the IBM AT model and many "clones" that perform like it. These can be purchased for about \$2,000. The modern processor is the 80386 which is extremely powerful and costs about



\$5,000 for a starting system. This processor is also the basis of the IBM PS/2 line of machines. The 80286 and 80386 machines can support much larger memories for larger programs. However, such programs are still rare. Genealogical programs are not likely to use these features for a long time. These newer models are not needed for genealogical work, but might be desirable if the computer is also going to be used for business applications, desktop publishing, or other intensive uses.

Memory is relatively inexpensive. As a result, it is usually wise to install at least 512Kb of memory in your computer and 640Kb if it will hold it.

## SCREENS

Computers must be equipped with a display adapter that translates characters and graphics entered at the keyboard into images on the screen.

Adapters are distinguished by whether they display colours and their resolution, which determines how sharp the images on the screen will be. The resolution is measured by how many columns x lines of dots will fit on the screen. There are many different standards for screens.

- **The MDA (Monochrome Display Adapter)** was the first screen on the IBM computers. It has a resolution of 720 x 348 for alphabetic characters, but can not display graphics.
- **The HGC (Hercules Graphics Card)** adapter was developed to give the same high resolution to black and white graphics. The Hercules graphics adapter is now becoming obsolete.

- **The CGA (Colour Graphics Adapter)** was the first colour screen with 4 colours, an ability to display graphics, and resolutions of 320 x 200 and 640 x 200 dots on the screen. This resolution is acceptable for colour, but is not very good for extensive text entry.
- **The EGA (Extended Graphics Adapter)** was developed to bring 16 colours and a higher resolution for 640 x 350 dots on the screen. Any computer with an EGA screen will also run programs designed for a CGA and MDA screen.
- **The VGA (Video Graphics Array)** screen has an even higher resolution with 350, 400 or even 480 lines, and up to 256 colours. Any VGA screen will also run EGA, CGA and MDA programs.

As the resolution and number of colours increases, the cost of the screen increases. Colour screens cost between \$300 and \$1,500. It is possible to get monochrome (black and white) screens that will use a CGA or EGA adapter and display the different colours in shades of gray. These cost under \$200.

## PRINTERS

There are many kinds of printers on the market. The ones of most interest to the genealogist are the dot matrix, ink jet and laser printers.

**Dot matrix printers** form letters by hammering pins against a ribbon to form dots similar to the ones on a computer screen. The cheapest printers use 9 rows of dots to print a line. If the paper is shifted slightly and the line is reprinted, the effect of 18 rows of dots can be achieved to produce Near Letter Quality (NLQ). Such

printers cost \$250 to \$600 and are satisfactory for most home uses. Another type of printer uses 24 rows of dots to form each letter. These produce higher resolution and cost from \$500 to \$1,000. Some dot matrix printers are able to use 14 inch wide paper to produce wide tree diagrams and other reports.

**Ink Jet printers** form characters by spraying droplets of ink on paper. They can achieve resolutions of 300 x 300 dots per inch and they operate very quietly, because they do not have any noisy hammers pounding on pins. They cost around \$1,000.

**Laser printers** work very much like a photocopier except that a computer instead of a lens generates the image. The Hewlett-Packard LaserJet was the first model suited for the microcomputer. There are now many others that mimic this machine. It produces a resolution of 300 x 300 dots per inch which is satisfactory for all but the most demanding printing needs. The characters are formed from font definitions in the printer and are limited to a standard set provided with each printer. Cartridges and special character sets that can be downloaded from the computer allow many others sizes and styles of characters to be used. Large headline fonts may require extra memory on the printer. The cheapest available laser printer is the Hewlett-Packard IIP at about \$1,600. Memory to allow a full page of graphics or a number of simultaneous large fonts costs another \$500.

**PostScript printers** are a deluxe variety of laser printer. They have many fonts built into them. Each can be created in a vast range of sizes for many purposes. They usually have a resolution of 300 x 300 dots per inch. However, the same printer codes can be sent to industrial strength PostScript printers with resolutions of up to 2400 dots per inch for publishing quality results. These

machines cost \$5,000 to \$10,00 and are not likely to be used by most genealogists.

## COMPUTER SYSTEMS

The prospective computer user needs to consider several factors in deciding which system to purchase. They should usually be considered in this order.

- **Software.** The available software should determine the choice of computer. Some computers, like Amiga, have a very limited choice of software and may have no software of interest. Make sure that there is suitable software available before purchasing a machine.
- **Purpose.** The hobbyist with a limited need does not have to buy as expensive a package as someone who wants to also use the computer for business or wants to publish a high quality family history.
- **Cost.** Systems consisting of an IBM PC compatible microcomputer, Monochrome screen, and dot matrix printer can be purchased for a little over \$1,000. An IBM AT compatible computer, EGA colour screen, and laser printer could cost over \$4,000.

\*\*\*

## LETTERS



Dear Editor,

Last year in the June Bulletin I put a query regarding John Kowich/Kovats now know as Kovacs. In September the family who purchased the farm from John in 1922 contacted me. Since then we have corresponded regularly.

I would be remiss if I did not also say how much I appreciate all the hard work and the excellent items in the Bulletin.

Marjorie E. Hamilton  
Fredericton, NB

Dear Editor,

I have written a letter to Mrs. June Helm of Moose Jaw, thanking her for taking the time to write the article on the Schooner Thornton and her crew which appeared in the June 1990 Bulletin. I do not belong to the SGS but circumstances were such that Mrs. Helms article was passed along to me. As a result of the article I have established my ancestry back to the 1600's in America. I have been searching for my missing link - Adam Crysler Clement for nearly 10 years. You can imagine how excited I was when I read the story and how that excitement continued as the pieces of my background began to fall in place. I want to thank Mrs. Helm, and all the other researchers out there who take the time to copy tidbits of information they find and have them published. You never know what fantastic results can

occur. I hope I can do the same for someone at some time in the future.

Les Harris  
Comox, BC

Dear Editor,

Ron Bremer has again come up with his list of 'besser' and 'worse' sources for those looking for ancestors. Everyone must keep in mind that these classifications are only Mr. Bremer's opinion of what is good and bad and that his opinion is no better than your's. Mr. Bremer is extremely knowledgeable when it comes to what records are available, where they are and what is in them. Everyone should take every available opportunity to hear him speak so that they will learn about where and how to search as that is a major concern to most genealogists. However, when you have heard him, lump the two lists together and consider them as one big list of sources, then, use your common sense in evaluating what you find.

In his list of 'worse' sources he says that tombstones have a 95% error factor. That is just not true. He says that there are no good printed family histories. Again, that is not true. There are some very good ones that have been as carefully researched as it is possible to do. In his 'besser' list he includes vital statistics and, from personal experience I know that these are no better than census records, death certificates and obituaries. The same applies to church records, fraternal society records and other records.

Keep in mind the fallibility of all records, use all of the material to help guide your further research, and keep on looking.

Gordon Phillips  
Hartney, MB

Dear Editor,

Just a note to Congratulate you on your first edition of SGS Bulletin.

For us "oldsters" with "not so good" eyesight the larger and darker print makes for easier reading. We won't have to keep the "mag" glass dusted off. Seriously I am enjoying the contents. Congratulations again.

Evelyn Ballard  
Saskatoon, Sk.

Dear Editor,

If it were 1st April I might think that the article "Reclaiming Your Ancestors Ancient Titles" in the March issue of the Bulletin was a joke. As it is not I deplore the publication of such arrant nonsense.

The writer concludes that the purpose of genealogy is "to perpetuate our family's noble heritage". It is not. The sole purpose of genealogy is to perpetuate the truth.

The Holy Roman Empire was dissolved in 1806 when all the rights formerly belonging to the Emperors became vested in the Sovereigns of the various principalities into which Germany was then divided. Titles conferred since 1806 are not those of the Holy Roman Empire, but of Austria,, Prussia, Bavaria, etc., as the case may be. To pretend that the rights of the Holy Roman Empire are somehow collectively represented by an organization calling itself the "Patriarchate of Antioch" is absurd.

However titles were created in the past, and it was much the same throughout Europe, whether for service or on payment of fees, those titles were granted with specific remainders, i.e. the manner in which the title was to descend was fixed at the time of its creation. "A reasonable demonstration of descent," despite what the message from Antioch says, is not sufficient. One has to prove that one is the direct male heir. If the heir is in prison or a lunatic asylum he is still the heir.

If the "Baron of Montfort" thinks that he is rightfully using an English title he had better look at *The Complete Peerage*. He will soon see that his two thousand dollars has not been well spent.

To assume a title illegally is, like the use of the Arms of a family of the same surname, merely theft. It does no honour to the ancestor, it brings ridicule upon the descendant and it debases the whole honours system.

Anthony J. Camp

Director

Society of Genealogists, London, England.

Dear Editor,

KBYU-TV and the author of *Roots*, Alex Haley, are involved in a very exciting television project on family history. *ANCESTORS*, a ground-breaking, prime-time series on PBS, documents individual searchers for links to their ancestral past. The Family History Library is providing technical assistance and consultation.

*ANCESTORS* will focus on the rich dramas that unfold as a result of family history research. The

programs will feature stories and storytellers with the ability to capture imagination and bring family history to life.

KBYU-TV is currently in the process of conducting a nationwide search for such material and hopes that you and your patrons will be able to assist in this exciting endeavour. We simply ask you to encourage those with interesting stories to send them to:

KBYU-TV

BaBette Davidson

Project Director, *ANCESTORS*

C-302 HFAC

Brigham Young University

Provo, UT 84602

We appreciate your help. If you have any questions regarding this project, please feel free to contact BaBette or Marci Brown at 801-378-0050.

David M Mayfield

Director

Family History Library, Salt Lake City

Dear Editor,

Some of my research is in Somerset and Dorset, England. As a result, I wrote to the Dorchester Reference Library to ask them to search the 1861 and 1871 Censuses for Buckhorn Weston, Dorset. Their reply letter was that these 2 Censuses were at the Somerset Record Office. (To my knowledge Buckhorn Weston has never been part of Somerset but apparently these records are at the Somerset Record Office anyway). I hope this information may be of help to someone.

Mrs. Judy Venables

Lashburn, SK.

## Genealogical Supplies

### Books

Births, Deaths, Marriages from Regina Newspapers 1883-1889 . . .	\$15.00
Births, Deaths, Marriages from Regina Newspapers 1890-1899 . . .	\$23.00
RCMP Obituary Index 1933-1989 . . . . .	\$20.00
SGS Members' Interests 1989 . . . . .	\$ 5.50
SGS Library Supplement 1986-1988 . . .	\$ 7.50
In Search of Your Canadian Roots: Tracing Your Family Tree in Canada Angus BAXTER. . . . .	\$16.95
Genealogy in Ontario: Searching the Records (Revised Edition) . . . . .	\$13.50
Surrogate Court Records at the Archives of Ontario, C.J. SHEPARD. . . . .	\$ 3.00
Historical Sketch of St. Peters Parish and the Founding Colonies of Rastadt, Katharinental & Speyer . . . . .	\$ 1.50
Were Your Ancestors Front Page News .	\$ 7.70
How to Research Your Ukrainian Ancestry in Saskatchewan . . . . .	\$ 4.00
The Bukovina Germans . . . . .	\$ 7.50
Bukovina Villages/Towns/Cities & Their Germans . . . . .	\$15.00
Hearth Tax . . . . .	\$ 2.80
Back issues of the Bulletin for SALE . .	\$ 1.50

\*\*We will xerox any Back Issues of the Bulletin  
for \$7.50 if sold out. At your request only.

### Forms

SGS Family Unit Sheets . . . . .	\$ 2.50
-pkg of 50 including 3 pedigree charts	
SGS 4 Gen. Pedigree Charts . . . . .	\$ 2.50
-pkg of 50.	
SGS Seven Generation Pedigree Chart . .	\$ 1.00
Correspondence Log - 20 sheets . . . . .	\$ 1.00
Research Log - 20 sheets . . . . .	\$ 1.00
IGI forms - pkg. of 10 . . . . .	\$ 1.00
1891 Census Forms - pkg. of 20 . . . . .	\$ 1.00
Bumper Stickers - . . . . .	\$ 1.50
"Genealogists Dig Their Roots"	
Yellow Sheets (clear) . . . . .	\$ .50
Our Family Tree Book . . . . .	\$10.00

### Maps

District of Upper Canada 1788-1849 . .	\$ 2.50
- set of 4 maps.	
Township & County Seats of Ontario . .	\$ 2.50
- set of 7 maps.	

Mail your orders to:

SGS, P.O. Box 1894, Regina, SK. S4P 3E1

Please add \$2.00 postage for first book,  
and \$.50 for each additional book. Prices listed subject to change.

### Back Issues of the Bulletin

- 1974-V5, #4 Historical Sketch of St. Peters Parish;  
Founding of the Speyer District.
- 1978-V9, #1 Lutheran Archives in Canada; Canadian Monarchy.  
#4 Beaubien History,  
Cemeteries Recorded: Lumsden & Ottawa.
- 1979-V10, #4 Cemeteries Recorded R.M. 406 Mayfield;  
Norway Visit.
- 1980-V11, #1 German, Dutch, Danish, Norwegian Immig.;  
American Immig. to Canada.
- 1982-V13, #1 Resources of Public Archives;  
ENGEL trip to Germany.  
#3 History of Qu'Appelle NWT;  
Building Basic Genealogy Library.  
#4 Index
- 1983-V14, #1 Lee Family in England;  
Manitoba Archives Publications.  
#2 SGS Archives, Library, Cemetery Project, Bulletin.  
#3 French Immig. to Canada & the West;  
Funeral Home Information.  
#4 Genealogical Research in Ontario;  
Sherwood United Church.
- 1984-V15, #1 Wolhynian German Settlement:  
Microfilms, Bukovina.  
#2 Research in Scotland, Computers;  
Ukrainian Res. Wolhynian Germans.  
#3 Ancestors in Prussia; Wolhynian Germans cont;  
Loyalist Ont.
- 1985-V16, #3 Home Children Life in Aberdeen;  
Bibl. for Ukrainian Research.  
#4 Home Children cont'd.; IGI;  
Prince Albert Bus Tour.
- 1986-V17, #2 Family Registry.
- 1987-V18, #1 British Census Records;  
Tracing the Natural Parents of Adopted Children;  
Res. Loyalists & Early Settlers in Ontario.  
#2 Ukrainian Given Names;  
Bartholomew History and Jeffrey History.  
#3 Photo Analysis; Genealogical Program Ideas.  
#4 French & Metis;  
Numbering & Filing System by Jonasson.
- 1988-V19, #1 Searching for Roots;  
Saskatchewan's Romanian Orthodox Community.  
#2 Dutch Marriage Reg.; Planning A Family Reunion.  
#3 History & Use of English Parish Registers;  
The Yerxa Family.  
#4 Life of Peter Fidler; More Jewish Surnames;  
Beginning Research.
- 1989-V20 #1 Scottish Res. Without Leaving Town;  
War Reg. Records, Daoust Family.  
#2 Pierre Desautels 1631-1708;  
Search for A Mayflower Descent.  
#3 Tale of an Orkney Lad;  
Finding Family History Sources in Regina.  
#4 Finding Out What Has Already Been Done,  
Medical/Presby. Parish Records.
- 1990-V21 #1 Res. Sask. Court Records;  
Tracing Ancestors in Eng.; Employees of CPR.  
#2 Explore Ancestral Roots; Poor Law Records of Eng;  
Bavarian Farming System.  
#3 Self-Pub. Your Family History;  
Origins of the 3 Russian German Colonies.  
#4 Helpful Hints for Preservation of Family Collections;  
"Worse & Better".



# SASKATCHEWAN GENEALOGICAL SOCIETY INC.

## RESEARCH POLICY

### BASIC SEARCH:

The Saskatchewan Genealogical Society (SGS) will do basic searches of Saskatchewan sources for a \$20.00 fee. Sources searched: 1. Homestead index & file. 2. Cemetery index. 3. Obituary index and file. 4. Newspaper index.

Additional sources, if location is known, or discovered as result of above search: 5. Local & school histories. 6. Sask. Archives card index. 7. Henderson & telephone directories if they exist for the area.

If specific date of an event is known (birth, death, marriage, etc.) we will search local papers. NOTE: not all editions of all newspapers are preserved.

You will receive a written report of the research, noting all the sources checked. Up to \$2.00 worth of copying plus postage is included. Beyond that copying charges will be quoted. Current copying fees are \$.25 per page for paper to paper copies and \$.50 per page for microfilm to paper copies. NOTE that it takes as long to do an unsuccessful search as a successful search. Your chances for a successful search may depend upon how accurately you are able to describe the search you wish to have done.

These searches are done by knowledgeable volunteers. If you require a more in-depth search the Society can supply you with names of people who could do this.

### IGI SEARCH POLICY:

1. ONLY MEMBERS OF THE SGS may search the IGI and only for their own use.
2. Members using the IGI in person are charged \$1.00 fee per day. Copies made at .25 @ page.
3. The SGS offers a search service for those members who cannot do their own: \$4.00 for a five-name search, providing a specific location is given. A print-out of five pages is included. Additional location searches are \$1.00 per name plus one print-out. You will be advised on the number of pages if there is more than the 5-page limit, with an estimate of printing & postage costs. For a successful search, please supply: surname, given name, AND a specific location.

4. There is a \$1.00 charge each time the fiche are searched.

For further information on the IGI consult:  
SGS Bulletin, Vol.15, #1. 1984.

### GRIFFITH VALUATION RESEARCH POLICY:

The Griffith Valuation Index and Valuation is the tax record or assessment of all households in Ireland during the years 1848-1864. Records list only head of household and describe the land being taxed. Need to know the location.

-MEMBERS ONLY search: \$1.00 per time for in person searches, copies .25. -\$1.00 per surname per county for mail-in searches of the index, this will tell you if your surname is listed and in which baronies. Search of the Valuation papers: \$10.00 for two hours of research time, if more time is needed we will give an estimate.

For more details on the Griffith see: SGS Bulletin, Vol.15, #1. 1984.

### POLICY FOR USE OF THE INDIRECT PASSENGER SHIP INDEX AND LIST:

The Lists generally give surname, christian name, all who travelled as one household with ages, original home, state or country of origin, plus destination in America. Written in German but fairly easy to read. Members only: \$1.00 per time for in person searches. Society will do searches for out-of-town members for \$10.00 - this will include up to two hours of research. Printing: .50 per page (takes 2 copies to copy one microfilm page).

For more detailed description, consult: "Hamburg Passenger Lists" in SGS Bulletin, Vol.15, #4, 1984.

**ALL RESEARCH POLICIES ARE SUBJECT TO  
CHANGE SHOULD COSTS INCREASE.**



**Saskatchewan Genealogical Society**  
P.O. BOX 1894  
REGINA, SASKATCHEWAN  
S4P 3E1

PAID AT REGINA, SASK.

SECOND CLASS MAIL

REGISTRATION NO.

**6574**

Return Postage Guaranteed