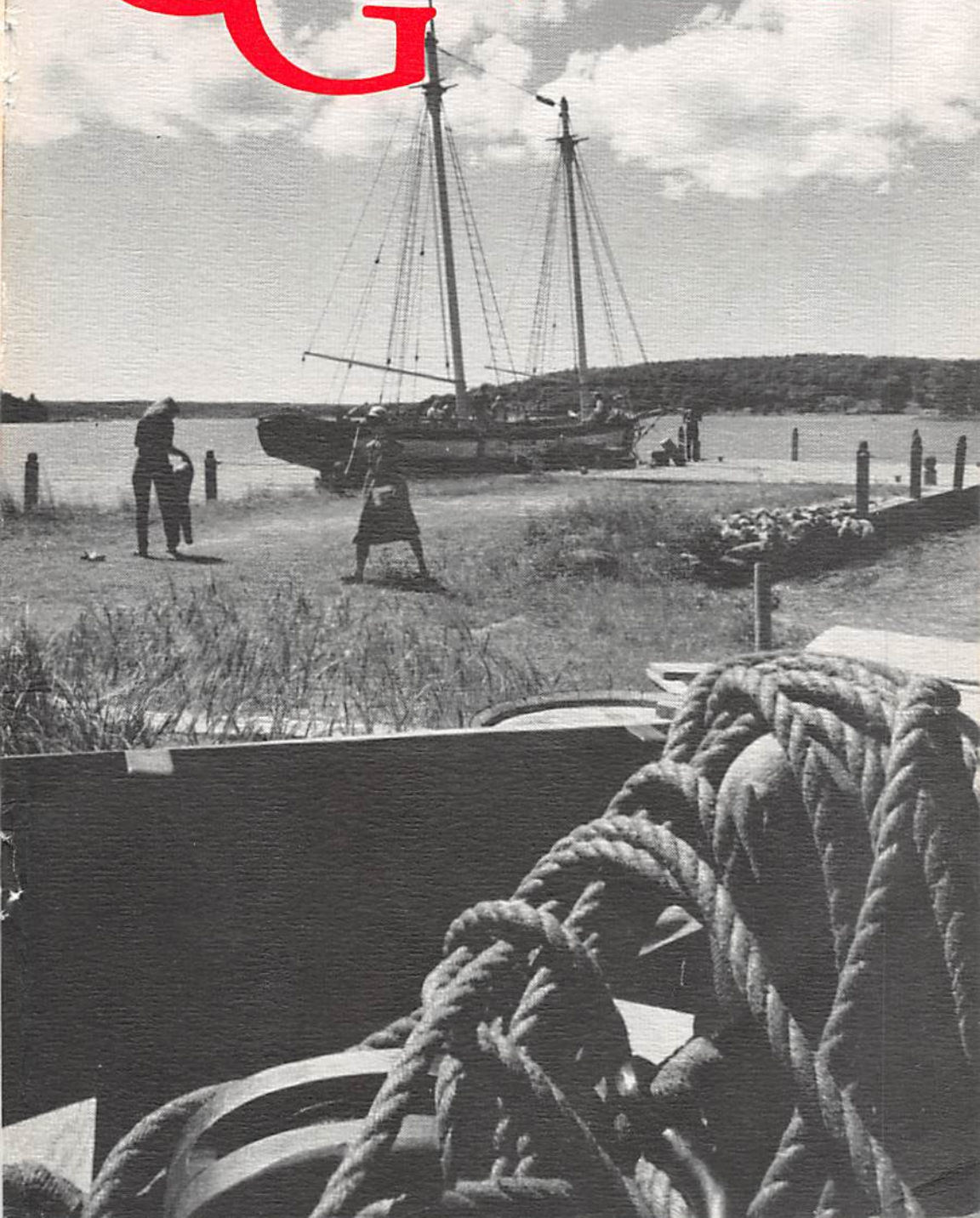


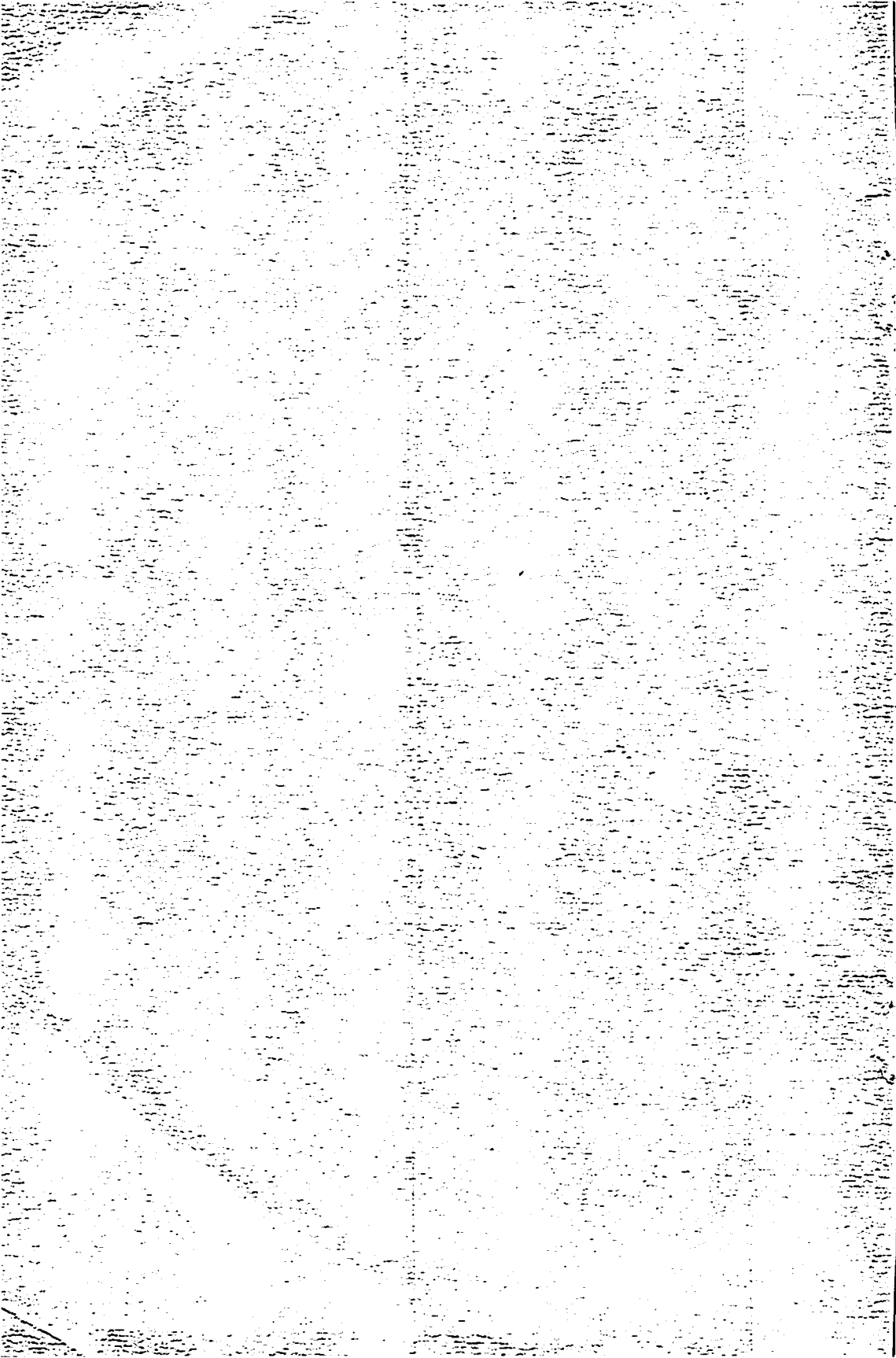
P23

X

Canadian Genealogist

VOL. 10, NO. 1 MARCH 1988





Index to CANADIAN GENEALOGIST Volume 9, Numbers 1-4, 1987

A, B, C

Abrams, Hannah 96
Alexander, Emma 96
Arthur, Ester J 96
Bruce County Marriage Register 23
Bunce family 172
Calling all families 11, 73, 136, 201
Church registers inventory 82
Classified 63, 127, 190, 254
Cluff, David 102
Cobourg's celebrated sobriquets 221
Computer Connexion 2, 66, 130, 194
Coon, Stephen 81
Cornwall, Louisa 20
Corrections to Bruce & Durham County
Marriage Registers 23
Cuttle family bible records 246

D, E, F

Duff, David 231
Durham County Marriage Register 23
Family Roots, review of new Apple version
3.0, 181
Federation of Canadian Genealogical &
Family History Societies 75
Forsyth, Frederic Gregory 164

G, H, I, J, K

Genealogical detectives trace Establishment
kin 30
Genealogical sources in Newfoundland &
Labrador 137
Genealogical Speaking 8, 72, 135, 198
Genetics for Genealogists 93, 178, 239
Haacke family bible records 176
Haight, John 246
Hart, Ann 96
Head, Sir Francis Bond 19
Historical Genealogy 89
Howey Robert 81
Huff Lucretia 96
Huron County Cluffs 102
In search of the 'Forlorn Hope' 184
Kennedy, Angus, Alexander, Neil 157
King's County Planters 107

L

Labrador sources 137
Landon family 244
Leeds & Grenville Wills 46
Letter from Sophiasburgh 96
Lincoln County Wills 81
Lossing, Solomon, Peter 18
Loyalist Grantees of Gagetown, NB 28

M, Mc

Manitoba Cemetery Index 212
Markham, Ontario - The Haacke family of
176
Miller, Harry C 13
Military Establishment of Penetanguishene 30
Miner, James, Sylvanus, Thomas 117
McKenzie, William Lyon 18
McNab, Colonel Alan 18

N, O

Naval Establishment of Penetanguishene 30
New Brunswick Loyalist Grantees of
Gagetown, 30
New England background of King's County
Planters 107
Newfoundland & Labrador Genealogical
Society 173
Newfoundland sources 137
Obits from Port Hope newspapers 95, 242,
245
OGS church registers inventory 82

P, Q

Pearsall, John, Oliver 96
Penetanguishene Naval & Military
Establishments 30
Porter, Elisha, Israel, John, Samuel, Simeon
113
Prince Edward Island immigrants 32
Preparing a family history 226
Publications & Resources 9, 200
Purcell's family bible 99
Purcell, Michael 146

Canadian Genealogist is a quarterly magazine published by Generation Press, 172 King Henrys Boulevard, Agincourt, Ontario M1T 2V6 (416/292-9845). Subscriptions are \$25 annually (postage paid) for the calendar year (1 January - 31 December). The editors invite articles and news items from anyone with a serious interest in genealogical research. Manuscripts should be typewritten, double-spaced, with adequate margins and addressed to: The Editor, Canadian Genealogist. While we cannot assume responsibility for loss or damage, all material will be treated with care while in our possession. It will be returned only if accompanied by a self-addressed, stamped envelope of the proper size.

Back numbers and additional copies are available to subscribers at \$5.50 per copy; to non-subscribers at \$6.25 a copy. Bulk discounts are available when ordering three or more copies of a single issue at one time. For rates, please send SASE.

What's In A Name inquiry section is open to subscribers and non-subscribers. Non-subscribers please include payment of \$5 per query each 60 words or less. Submissions must be typewritten or printed clearly, and addressed to: Editor, What's In A Name. Subscribers are entitled to one free query per issue from receipt of subscription.

Classified advertisements are available at \$15 per single insertion each 60 words or less; \$50 for four insertions. Display rates on request.

©Generation Press 1988

Second Class Mail Registration No. 5778.

All rights reserved. Reproduction or use of the whole or any part of the contents without written permission is prohibited. ISSN 0707-3232

Editors

George Hancocks
Elizabeth Hancocks,
C.G.

Associate Editor

Lynn Morgan

Contributing Editors

W.E. Britnell, Ontario
J.A. McAndless, Ontario
T.M. Punch, Nova Scotia
John Ruch, Quebec

Contents

Vol. 10, No. 1, 1988

The Computer Connexion	2
<i>Lynn Morgan</i>	
Computerized Mohawk Valley genealogical data	8
<i>Maryly B. Penrose</i>	
Early Patentees, London, Canada West 1828-1842	21
<i>Albert Stray & Gail Clothier</i>	
An outline of Snelson genealogy	37
<i>Charles J. Snelson</i>	
Letter from a 49er	42
<i>R. Alex Collins</i>	
Missing church records of Sombra Township, Lambton County, Ontario	44
<i>Kathryn Arnold</i>	
Renfrew County Surrogate Court Index, 1858-1900, Part II	49
<i>June Gibson</i>	
What's In A Name	60
<i>Elizabeth Hancocks, C.G.</i>	

Coverline: Naval Establishment, Penetanguishene, Ontario. For those of you who wondered about last month's cover — it was a carved cupid's head from the corner post of an antique bedstead. GH

THE COMPUTER CONNEXION

Lynn Morgan, B.A., M.L.S.



There are many decisions to make about how you will enter your data when you first start using a genealogy software package. This column examines some of the decisions one must make in order create a good database which is 'clean' and which will allow the features of the software to work properly. The program's searching function will not find records properly if the dates and names are not entered correctly or do not follow a standard format. Reports such as pedigree charts and family group sheets will look sloppy if certain conventions are not followed. The program helps you maintain consistency to some extent by specifying certain date and/or name formats. But there are still decisions each user can make to tailor the the database and customize the information stored in the file. Consistency in the way information is entered is essential for the database to work properly with your software.

Programs such as Roots II and Family Roots offer an installation process that allows you to customize the program to your particular needs or desires. Some of the decisions you make may be changed easily later. Some decisions may be reversed later but only at great cost because they require the user to manually adjust existing information in the database. For example, you may decide to change the way dates are handled in Family Roots, but in order for them to print properly, dates already entered in the database must be converted to the new format. This type of decision should be carefully thought out before data is entered so that massive changes are not required later.

Personal Names

The way you want personal names to appear on reports is one of the options that requires some consideration before entering data willy-nilly. You may enter names using only upper case or using a combination of upper and lower case. Using upper case for the entire name will make the name stand out on reports but makes data entry more tedious as you turn the caps lock key on and off. To ease the input process, Personal Ancestral File (PAF), Roots II and Family Roots (a new feature in version 3.5) will let you force surnames to uppercase when printing family records reports. This means you may enter names in upper and lower case in the database, but surnames will appear in upper case letters on printed sheets and lists. As an alternative, the Roots II program will highlight surnames by printing them in bold face instead of capitalizing them. This is one of the features determined during the installation process.

The way you choose to use upper/lower case during data entry impacts on more than the printed reports. Since a computer does not consider Smith and SMITH to be equivalent, you must follow the same rule when entering every name so that the program's searching function will find all occurrences of the name you want to find. If you decide to enter surnames using only upper case then when you input a search key, you must type it in upper case or the computer

will not find a match. Family Roots has a parameter in the search function which gives you the option to ignore case when searching in order to avoid this type of problem.

The order of name parts is another consideration. For example, you may print a name on a report as 'Brillinger, Peter' or as 'Peter Brillinger'. Each program handles the order of names differently. PAF does not give you a choice and prints names in their natural order. Family Roots offers you the option through a parameter in the printing functions so that you can print them either way at any time. Roots II prints them the way they have been entered so if you prefer one format to another, then you must input names in the desired order when creating the database. Again, consistency is important so that all names will print the same way on a report.

You will also have to decide how you want to handle nicknames and variant spellings of surnames or given names. None of the programs have a specific location in the record to store this information. If you want to store the variant spelling in brackets after the last name, you have to be sure the program has enough room for the name. For example, PAF only allows 16 characters for surname. This would not allow you to enter a name such as 'Brillinger (Bullinger)' although you could do it for shorter names such as 'Kizer (Kaiser).' Another option would be to enter the alternate spelling in brackets and have it treated as either a given name or title. Nicknames could be entered as a given name, but you must decide how to indicate that it is a nickname. For example, you could enclose it in brackets or asterisks (eg. *Sadie*).

It does not matter what method you choose as long as you use it consistently throughout the database and remember what special symbols mean. The choice of spelling and the position of name parts will affect how lists of names print. Most programs have a feature that will print a list of the names in your database in alphabetical order by surname and given name. The way you input nicknames and alternate spellings may affect the final order of a sorted list. For example the 'Kizer (Kaiser)' records will appear in a group after all of the plain 'Kizer' records rather than being interfiled according the order of given names, if the alternate spelling is entered in the surname part of the name data.

Place Names

Because of the way pedigree charts limit space for place names in all three programs, this may be a determining factor in how you choose to enter place names. Remember that other printed reports such as family group sheets do not have this limitation, so there is no cause to panic that precious location information is being lost everywhere.

In PAF there are four parts to each place name. Since pedigree charts have a limit of approximately 30 characters for place names, PAF gives preference to the forth level. Levels one, two and three are abbreviated or dropped when the available space runs out. This may affect how you use the level structure. You might consider putting the most essential place information in level four. Or you may decide to use level four for country names, but fill it in only if the country is not in North America. That would force the lower levels to appear on pedigree charts, starting at level one.

Family Roots does not divide place names into parts and there is no restriction

on the length of any one name as long as the total allowable record length is not exceeded. However, pedigree charts only have room for 16 characters. Names longer than that will be truncated, so the most important location information should be entered at the beginning of the field.

Of the three programs, Roots II has the most limiting space for place names. It divides places into two parts, 14 characters and 16 characters long respectively. Since only the second part is printed on pedigree charts, it is wise to use this part for the most meaningful part of the name.

Judicious use of abbreviations will help alleviate the space problem. There is a list known as the Chapman County Codes. This is a three-letter system of codes for each county within the British Isles, and for provinces and states within the United States, Canada and Australia. It also includes a list of abbreviations for France, Austria, Germany and Switzerland. Other countries have been assigned codes although specific geographic locations within those countries are not included. This list was developed to facilitate standardization on computers for genealogists who need to conserve space. A copy of this list may be found in the *Genealogical Research Directory*. Using abbreviations accepted by the post office for provinces and states in North America is an alternative to the Chapman codes. Your choice would depend on your family history and its migration pattern.

The Roots II program maintains an internal list of names which the user may call up and use to automatically insert the desired name into a place field. If names are entered consistently, this feature can be put to good use. Every time a slightly variant form of name is input, a new item is added to the internal list. Likewise with PAF, if you input 'Markham Twp', and the next time type 'Markham Twp.', the program will consider these as two separate, distinct places. Decide on a policy for punctuation and format of names in order to avoid an ungainly list of names that really represent one place. You may have to make a note to yourself as a reminder of the decisions you make along the way.

Comments above regarding the choice of upper/lower case for personal names apply equally to place names. In order for the searching functions to work, place names must be entered consistently. There is not an option to have any of the program's under discussion automatically capitalize place names when printing reports.

Dates

Each of the three programs is much fussier about date formats than name formats. Roots II supports single format (eg. 24 Mar 1867) and does not allow any variations in input. That is, you must input dates in the same format it uses for display. Family Roots and PAF allow the user to input dates in various formats and the program converts recognized ones to a standard format. Family Roots supports four date formats: MM/DD/YYYY (eg. 3/24/1867); MM-DD-YYYY (eg. 3-24-1867); Month day, year (eg. March 24, 1867); and DD Mon YYY (24 MAR 1867). The installation process lets you define whether you want a day/month or month/day orientation when dates are displayed or printed. Parameters for printing reports let the user choose to print month names as either a three-character abbreviation or as a number, using the familiar slash format (eg. 24/3/1867 or 24 Mar 1867). PAF allows a similar variety of formats for data entry including the four mentioned above and MM DD YYYY (eg. 3 24 1867), or

DD Month YYYY (eg. 24 March 1867). However, all of these are converted to one standard form, which is the same as that used by Roots II.

Another issue with dates concerns inexact dates. Each program handles uncertain dates in different ways. PAF lets you enter 1917/18 to record a dual date. It also supports certain words and abbreviations to denote uncertainty such as about (abt), before (bef), after (aft). Family Roots allows you to put anything you want, text or numbers, into a date field. It only recognizes the information as a searchable date if you use one of the formats mentioned above. This gives a lot of freedom for expressing uncertainty but restricts the use of dates for searching. For example, if you input 'about 1750', Family Roots does not include this date in any search results that asked for records meeting certain criteria prior to 1800. One way to get around this is to enter the date as '?? ??? 1750' to force the date into a structured format that may be used for searching and then further document the uncertainty in a note field.

The Roots II program offers a number of options for recording uncertainty about dates. After each date field there is a flag that may be set to either 'Y' or 'N' to indicate whether you are sure about this date. You may leave the day or the day/month portion of a date empty and only input a year if the information is unknown but you may not enter a day and month without a year. You may also type 'after', 'before' or 'circa' preceding the year. Roots II has a complex system of date conventions using question marks, blanks, and special words (eg. unknown, before, etc.) to indicate level of certainty in dates on printed reports. These conventions are spelled out in the manual.

The subject of handling note fields and source information is worthy of a whole column in itself. PAF handles source information by a completely separate program and Roots II provides a separate type of record for source records. Family Roots allows individual fields in each record to be footnoted. The user must decide how much of the source and note or textual information should be handled by a word processing package and how much should be handled by the genealogy program.

The content of your database is formatted according to a combination of program-dictated rules and personal choices. It is unrealistic to expect you will make the best choices the first time you create a family database. You will probably have to make some changes as your understanding of the program grows, and perhaps you will choose to go back to earlier records to clean-up the database. However, the more thought you put into the initial creation of your database, the less frustration you will experience over the years of its use.

NEWS FROM THE FIELD

Version 2.1 of Personal Ancestral File has recently been released for IBM/compatible machines. The upgrade is \$20.00.

* * * * *

Family Roots has announced that version 3.5 for IBM and compatible machines is now available. New features include the ability to append text files to both styles of group sheets, automatic capitalization of surnames in edit, and the ability to specify the name of a text file to append to printed sheets rather than assuming the default file name. Registered users may obtain the upgrade for \$20 US.

* * * * *

Quinsept has also announced the release of a new utility program for IBM and compatible machines with hard disks, called *Family Connections*. It prints a variety of reports, sorted by date, alphabetically or numerically, using a dBASE III format. It will also let you extract a portion or all of your database for transfer into a database compatible with dBASE III. You do not need dBASE III to use *Family Connections*. A built-in word processor lets you edit notes and text files that have also been transferred.

* * * * *

Commsoft has announced Roots III. The number of individuals per database has been increased from 4095 to 65,535. Roots III supports the expanded memory standard to accomodate larger databases. The record structure has been made more flexible with 'event' types (eg. birth, death, etc.) being chosen as data is entered. The upgrade is \$75 US. An additional utility package which includes Roots Writer for text file preparation and Revent, 'a computerized historical book of days' (*Roots Rap*, Sprint 1988) is available separately for \$60 US, or \$40 US if bought in combination with the upgrade.

* * * * *

A Roots User Group has started in the Toronto area. It meets regularly at 8:00 p.m. on the third Monday of every month at the OGS office, 40 Orchard View Blvd, Suite 253, Toronto.

* * * * *

An electronic bulletin board devoted to genealogy has been started in Toronto. You may contact KINTRACERS by dialling 969-8717 using a computer and 300 or 1200 baud modem. Settings are 8bits, 1 stop bit, no parity. Congratulations to Ken Gowie for filling an important gap!



After 16 years
in preparation!
Announcing



The Palatine Families of New York

by Henry Z Jones, Jr.

A two-volume, fully-documented study
of all 847 "Palatine" families who arrived in
colonial New York from Germany in 1710.

The series includes:

1. Detailed data on the German ancestries of over 500 of the 847 families - the product of 15 years of village-to-village searches in Europe! Many families go back to 1600!
2. Documented information on the first few generations of the families in America, taking many groups from 1710 to 1776.
3. Newly-found materials taken from unpublished manuscripts found in archives in Germany, Holland, and America.
4. A section on the historical background of the emigration, utilizing many hither-to unknown sources.

Clothbound, 1,350 pages, including name and place index, illustrations, map, and appendices.

\$85.00 For The Set

(Plus \$4.50 Postage, Packaging and Handling)
(California residents add appropriate sales tax)



ORDER FROM:
Henry Z ("Hank") Jones, Jr.
P.O. Box 8341
Universal City, California 91608



Computerizing Mohawk Valley genealogical data

by Maryly B. Penrose, C.G., A.S.I.

Canadians searching ancestry in the Mohawk Valley of New York State may have noticed a small classified ad in the publication last issue. It outlines research services available from author and researcher Maryly B. Penrose, a long-time friend and pen pal to this editor and this magazine. Maryly has compiled a data base on Mohawk Valley genealogical records, and the story of how and why she did it makes fascinating reading.

There are a growing number of individuals who see the value of such local genealogical data bases, and the editors of CG feel Maryly's description of how she went about starting hers after 25 years of searching valley records might be of great help to others contemplating a similar exercise. The expansion and computerization of genealogical records by genealogical researchers is an important non-archive, non-library development, and one which will make access to these records much easier for those who must face the sometimes frustrating business of researching unfamiliar records in unfamiliar places. We believe that as this process continues, more and more obscure genealogical records will become available through genealogical data bases. We also believe that libraries and archives would be well advised to take note of these developments in the genealogical world, and encourage genealogists to proceed in conjunction with archival cooperation. There are a great many archival records that seldom see the light of day because they are unindexed or unarranged. Genealogists are experts at arranging such data, particularly if it enables them to get at those nuggets of family information previously hidden. Our own magazine's efforts to publish the Ontario will indexes compiled by June Gibson are a case in point.

For the past twenty-five years I have researched early families in the Mohawk Valley of New York. An intensive genealogical study was made of one family which culminated in a book entitled the *BaumannBowman Family of the Mohawk, Susquehanna, & Niagara Rivers* (1977). I then began research on the Revolutionary War period which subsequently led to publication of *Mohawk Valley in the Revolution: Committee of Safety papers & Genealogical Compendium* (1978) and *Indian Affairs Papers: American Revolution* (1981).

It became apparent that many families were interrelated through marriage and, in fact, a number of these families crossed back and forth for generations. The Mohawk Valley was geographically isolated and there was a large Palatine population in the area. The records of the Mohawk Valley were surprisingly strong for this early period due to the importance of the church in their daily lives. Unfortunately, the Revolutionary War had a profound effect on those who lived along the Mohawk River and caused a great upheaval in the way of life they had established. Families were separated because of their strongly held disparate views over the schism between the Colonies and England.

Through the years an ever increasing number of records have been acquired by

me for research purposes. Marriage, birth/baptism, death, probate, military, pension, land and census records are essential sources for information. Experience has shown me that having to search these records individually is a time consuming and inefficient method by which to extract, organize, and analyze data.

The computer offered a system capable of handling large numbers of individuals with maximum ease and reliability. Moreover, it allowed me to organize the data in a number of different ways for research and report purposes.

I selected the Tandy 2000 (MS-DOS) computer which operates with two floppy double-density disks to help me in this compilation program. The memory (384K RAM) is capable of expansion to a hard disk if needed, and the retrieval capabilities are smooth and rapid. I also purchased a monochrome high-resolution monitor and a reasonably priced dot-matrix printer which works easily and efficiently.

The next, and probably the most important purchase, was the software. I studied a number of reviews and articles concerning software for the purpose I had in mind, and decided to purchase the PFS series: PFS File, PFS Report, and PFS Write. The requirements necessary for my contemplated design of a database were contained in the PFS software. The three manuals that came with the PFS programs (File, Report, and Write) were clear in their explanation and, for a novice, this is of paramount importance. Moreover, the programs themselves can be operated with a sense of ease and confidence by the genealogist who plans to make the computer an integral part of his or her ongoing research.

Now came the difficult part. I had never used a computer in my life and there was no one who could give me hands-on experience. For several weeks, after taking delivery of the computer system, I pursued a daily course of self-instruction. One incident stands out in my memory as the nadir of my initial exposure to the computer. In less than twenty-four hours after setting up my T2000, I had managed (by too much eagerness and too little study) to erase my master MS-DOS disk which rendered the entire system unusable. With a sense of embarrassment and a newly acquired resolve to "read before reacting", I returned to the dealer who provided me with a new MS-DOS disk.

A word of caution when working with computers — disks can malfunction or be wiped out by mistake. Always make several backups of important data. Worst of all, the system can crash (fail). However, the most honest advice I can offer anyone new to computers is to stay with the learning process long enough to discover that the advantages of using a computer far outweigh the negative aspects inherent in mastering the system.

The design of the database itself involved three steps which were put into place as needed for the procedure at hand. The first step was to utilize the PFS File for data entry and retrieval. This was accomplished by designing a form for each record category, i.e.: marriage, birth/baptism, etc., that would incorporate the necessary information from the primary records for each individual or family. One of the most beneficial and distinctive components that PFS File offers in its program is the unlimited field which allows the user to input the required amount of data without worrying about fixed limits of material. For example, in designing the birth/baptism disk, I labelled three items: 1) Parents; 2) Children; 3) Sponsors. Enough room was left in each item so that multiple entries could be inserted without running out of form/field space. Now I was at liberty to insert one baptismal entry or an entire family of entries from various church record sources

with sufficient space to complete the input of material. This design method was then applied to the other PFS File disks which would contain the balance of primary sources for the Mohawk Valley. In the second step, the raw data recorded on the PFS File disks was now capable of being turned into analytical and research reports. The PFS Report program was used to draw out specific individuals or family units in each record category and prepare a finished 'Report' for a client. The data retrieved from the PFS File was then transferred to the PFS Report which provided a presentation of the data in a clear and systematic manner. All entries were referenced to a key code which is described on the list of complete citations given with each Report.

The third and final step in developing this data service was PFS Write, which became the computerized typewriter for writing an 'Introduction' to the Mohawk Valley which would present background information to the researcher receiving a Mohawk Valley Data Report. In addition, PFS Write has been useful in preparing materials which are then saved on the disk and can yield an unlimited number of copies with just a touch of the key. If you have always created your work on a typewriter — I must warn you that if you ever decided to try a computer for the same task, you will be permanently converted to the effortless quality of a computer keyboard system.

I can recommend PFS software to those who want clarity and ease of management, as well as a series of programs that can be molded and expanded to meet the requirements of variable amounts of data input. (Inquiries concerning PFS software can be directed to Software Publishing Corporation, 1901 Landings Drive, Mountain View, CA 94043.) After nearly two years of design, development, and input, my database has now grown to more than 15,000 entry forms, containing the names of thousands of individuals, which represent more than 3,200,000 disk bytes. The same data, if left in their original sources, would necessitate a monumental and tedious effort in reconstructing the early families of the Mohawk Valley. This large base of data is now available in the form of individual *Mohawk Valley Data Reports*, covering surnames and specific families, for those undertaking research in the area.

A Report presents complete information on each individual under one or more surnames (as requested) with full references for each entry. At present, the time period covered by the records on computer extends from 1735 into the middle of the 19th century. The primary data now available on 18th and early 19th century Mohawk Valley residents includes: marriage (with a complete bride index), birth & baptism (all sponsors named), death, probate, military (name, rank, regiment in Tryon Co. Militia), Revolutionary War pension abstracts (all genealogical data extracted), land and 1790 census (full information given).

The results of a search in my database may be obtained (no charge) by sending a SASE and the surname(s) of your choice. If there is data on file you will also receive a quotation on the cost for a Report — which may be ordered to include one or more of the categories in which there is information.

To all Canadians to have roots in the central part of New York State, a *Mohawk Valley Data Report* might well provide some missing information, or better definition of your south-of-the-border ancestors.

"MOHAWK VALLEY DATA REPORT"

All rights reserved

PREPARED BY: Maryly B. Penrose, C.G., A.S.I.

DATE: 1/18/1988

SURNAME: LAUCKS & variations

MARRIAGE(S)

LAUCKS, Dieterich m. Anna Koch, 9/7/1798 (RDSA:195)

LAUCKS, Dieterich m. Dorothea Fuchs, 11/28/1764 (RDSA:175)

LAUCKS, Georg m. Lena Petri, 8/17/1794 (DRGF:211)

**LAUCKS, Henry D. m. Maria Elisabeth Crowse, 10/10/1749 (RDSA:164;
LTSA:277)**

**LAUCKS, Jacob (son of Adam Laux) m. Catharina Kayser (dau. of Joh.
Kayser), 7/3/1788 (RDSA:192)**

LAUCKS, Jacob m. Elisabeth Koch, 4/8/1783 (RDSA:191; DRGF:197)

LAUCKS, Johannes m. Catharina Frey, 5/7/1771 (RDSA:198)

LAUCKS, Johannes m. Peggy Borst, 3/17/1795 (DFP:53)

**LAUCKS, John Adam m. Catharine Elisabeth Snell, 10/16/1739 (RDSA:164;
LTSA:277)**

LAUCKS, Peter Hen: m. Sussanna Stamm, 8/7/1784 (DRGF:288)

LAUCKS, Peter m. Anna Maria Etz, 10/30/1778 (RDSA:198)

LAUCKS, Peter m. Anna Schultz, 9/11/1766 (RDSA:179)

LAUCKS, Wilhelm m. Elisabeth Kayser, 2/19/1793 (RDSA:197)

A Mohawk Valley Data Report exactly as a client would receive it. The information is complete, and it is easy to see at a glance, carefully structured. The Birth and Baptism section not only gives the names of the children, but full information on their sponsors. Other information from other sources helps to provide a complete picture of the individual being sought, as his life is outlined in the records of the day. Personal research through such records would require hours of time, plus complete familiarity with records available in the area — something few genealogists could hope to achieve.

BIRTH/BAPTISM

PARENTS	CHIL	SPN
LAUCKS, Adam & Catharina Elisabetha (Sne 1)	Peter, b. 3/21/1755 (LISA:12); bapt. 3/2 1/1755 (RDSA:2) Didrich, bapt. 1748 (RDSA:2) Johannes, bapt. 1742 (RDSA:2) Lisabeda, b. 12/22/1744; bapt. 2/17/1745 (RDSA:2) Adam, b. 5/27/1747; bapt. 1747 (RDSA:2) Catterina, bapt. 2/26/1750 (RDSA:2) Anna Eva, bapt. 9/29/1752 (RDSA:13)	Peter Crues & his wife, Elisabetha [Eapi e] (re:1); Hendrich Laux, Maria Lisabet Schmel (re:2); Johannes Schnell & his wife (re:3); Gorg Cobernoll & his wife, Elisabeth (re:4); Nickles Felling, Lisbet Schnell (re:5); Andreas Finck & Catterina (re:6); Marcus Petri & his wif e, Anna Eva (re:7)
LAUCKS, Adam, jr. & Magdalena (Laucks)	Catharina, b. 7/23/1783 (RDSA:111); bapt . 7/30/1783 (DRGF:73) Wilhelm, b. 2/24/1787; bapt. 3/4/1787 (R DSA:112)	Henrich Laucks & Anna Koch (re:1); Johan nes Stroehner & his wife, Maria [born: Schulz] (re:2)
LAUCKS, Dieterich & Dorothea [?]	Dieterich, b. 10/3/1774; bapt. 7/16/1774 (LISA:46) Adam, b. 4/26/1778; bapt. 5/7/1778 (LISA :52) [?], b. [?]; bapt. 3/21/1779 (LISA:57) Catharina, b. 12/6/1765; bapt. 12/15/176 5 (RDSA:68) Adams, b. 5/7/1768; bapt. 5/7/1768 (RDS A:65) Wilhelms, b. 5/7/1768; bapt. 5/7/1768 (R DSA:65)	Johannes Hess & his wife, Anna (re:1); A dam Laucks, Magdalena Laucks (re: 2); [?] (re:3); Catharina Laux & Stophe l Fox (re:4); Adam Laux & his wife, Cathrin Liss (re:5); Georg Schnell & Maria (re:6); Elisabetha [?] & Gottfried [?] (re:7); Jacob Laucks & Lisabta (re:8)

Elisabetha, b. 5/24/1770; bapt. 6/3/1770
(RDSA:183)
Henrich, b. 1/4/1786 (RDSA:111)

LAUCKS, Hendrick D. & Maria Elisabetha
Kraus)

Catharina, bapt. 9/13/1751 (RDSA:11)
Ellisabeta, bapt. 5/22/1753 (RDSA:14)
Anna Eva, b. 2/13/1756; bapt. 3/7/1756 (RDSA:14)
Anna, b. 8/15/1768; bapt. 8/23/1768 (RDSA:21)
Jacob, b. 6/18/1762; bapt. 6/13/1762 (RDSA:34)
Dieterich, b. 7/23/1764; bapt. 7/29/1764 (RDSA:49)
Maria, b. 2/14/1767; bapt. 2/22/1767 (RDSA:73)

LAUCKS, Henrich & Anna Elisabetha (Kiehn

Anna, b. 5/7/1755 (LISA:14)
Catharina, bapt. 1/23/1752 (RDSA:13)
Elisabetha, b. 6/25/1762; bapt. 7/4/1762 (RDSA:34)

LAUCKS, Henrich (of Royal Grant) & Eva (Schnell)

Johann Jost, bapt. 9/24/1798 (SJC:36)
Conrad, bapt. 12/16/1792 (SJC:68)

LAUCKS, Jacob & Elisabeth (Koch)

Jacob, b. 4/1/1785 (RDSA:111)
Catharina, b. 12/28/1787; bapt. 1/1/1788 (RDSA:116)

Adam Lauchs & his wife, Maria Catharina (re:1); Georg Cobernoll, Elisabetha Lauchs (re:2); Anna Eva, wife of Marcus Petri (re:3); Anna [dau. of Jacob Kraus] & Dieterich Laux (re:4); Jacob Kraus & his wife, Gertraud (re:5); Dieterich Lauchs & Dorothea Fox (re:6); Maria Margretha & Wilhelm Engie (re:7)

Werner Teigert & his wife, Magdalena (re:1); Peter Schnell, Margaretha Deigert (re:2); Elisabetha Ecker & Johannes Flack (re:3)

Jost Louks & Margretha Louks (re:1); Conrad Zimmerman & Magdalena Zimmermann (re:2)

Johannes Koch & Maria Lauf? (re:1); Caspar Koch & Catharina (ne) [born: Lauchs] (re:2)

BIRTH/BAPTISM

PARENTS	CHILD	SPN
LAUCKS, Jerg & Elisabeth [?] LAUCKS, Jo. Georg & Maria [?]	Peter, b. 10/10/1792 (LTSA:75) Elisabeth, b. 7/25/1769 (LTSA:28)	Johannes Cries & Anna (re:1) J. Laux & his wife (re:1)
LAUCKS, Johann Georg & Elisabeth (Bellinger)	Johannes, b. 7/29/1782; bapt. 8/12/1782 (RDSA:111); bapt. [date differs for bapt.: 8/4/1782] (DRGF:59) Adam, b. 6/12/1784; bapt. 6/14/1784 (RDSA:111; DRGF:84) Georg, b. 1/28/1786; bapt. 2/16/1786] (RDSA:111) Catharina, b. 5/12/1788; bapt. 5/25/1788 (RDSA:116)	Johannes Laux & Catharina [Frey: maiden name] (re:1); Heinr: Bellinger & Catharina, Widow of Schultz (re:2); Jacob Laux & Delia Bellinger (re:3); Andreas Krehe & his wife, Catharina (re:4)
LAUCKS, Johann George & Gertraut (Dyger)	Wilhelm, b. 7/8/1756 (LTSA:19) Johann Peter, bapt. 4/2/1752 (RDSA:12) John Joost, bapt. 3/1/1754 (RDSA:14) Henrich, b. 10/10/1761; bapt. 11/14/1761 (RDSA:29) Anna Elisabetha, b. 11/24/1763; bapt. 12/4/1763 (RDSA:43) Georg, b. 2/8/1766; bapt. 2/16/1766 (RDSA:61)	Wilm Laucks & his wife, Margaretha (re:1); Johann Peter Deigert & his wife, Anna Elisabeth [Fox] (re:2); Deobald Teuger, Maria Kinget Laux (re:3); Peter Laux & Pieter Laux, Elisabetha [dau. of Adam Laux] (re:4); Margretha & Henrich Mohleben (re:5); Georg Klock, Jr. & Catharina Laux (re:6)
LAUCKS, Johannes Jost (of Canaj. Castle) Margretha (Nabie) Palatine)	Peter, bapt. 2/1/1789 (SJC:9) David, bapt. 8/11/1793 (SJC:79)	Peter Louks & Margaretha Louks (re:1); Jacob Louks & Maria Mabee (re:2)

LAUCKS, John Wendel & Anna Barbara [?]	Anna Barbara , b. 8/8/1768 (RDSA:91)	Jacob Andries Kammerer & his wife, Anna Barbara (re:1)
LAUCKS, Joseph (in Royal Grant) & Margretha [?]	Gertrud, b. 3/8/1791; bapt. 3/27/1791 (SJC:48)	Heinrich Louks & Gertrud Louks (re:1)
LAUCKS, Jost & Margretha [?]	Johann Georg, b. 6/16/1781; bapt. 8/5/1781 (DREF:46)	Wilhelm Laux & Dorothea Maevius (re:1); David Maris & Elisabeth Laux (re:2); Joseph Maebbe & Catharina (re:3)
	Catharina, b. 12/6/1782; bapt. 1/19/1783 (DREF:66)	
	Johann Jost, b. 9/10/1784; bapt. 9/12/1784 (DREF:87)	
LAUCKS, Peter & Anna (Schultz)	Dorothea, b. 3/4/1772 (LTSA:42)	Jacob Schulz & his wife (re:1); Johannes Schulz & his wife, Catharina (re:2); Wilhelm Laux & Margretha (re:3); Maria Schultz & Johannes Laux (re:4); Friedrich Engie & Maria Elisabetha (re:5); Adam Laux Jun: & Lena (re:6); Jacob Dachstader & Catharina Dachstaedler] (re:7)
	Johannes, b. 8/26/1775; bapt. 9/3/1775 (LTSA:58)	
	Maria Margretha, b. 4/23/1767; bapt. 4/23/1767; d. 5/7/1767 (RDSA:74)	
	Maria, b. 6/4/1768; bapt. 6/12/1768 (RDSA:86)	
	Petrus, b. 9/11/1778; bapt. 9/16/1778 (RDSA:106)	
	Anna, b. 8/27/1781; bapt. 9/3/1781 (DREF:47)	
	Jacob, b. 12/23/1783; bapt. 1/27/1784 (DREF:88)	
LAUCKS, Wendell & Anna Barbara [?]	Christina, b. 9/17/1765; bapt. 7/21/1766 (RDSA:66)	Christina Kielmann (re:1)

BIRTH/BAPTISM

PARENTS

CHILD

SPN

LAUCKS, Wilhelm & Maria Margretha (Kress

Magdalena, b. 5/1/1755 (LISA:13)

Christina, bapt. 12/28/1751 (RDSA:11)

Johann Heinrich, b. 6/23/1760; bapt. 6/29
/1760 (RDSA:20)Johannes Mallrath & his wife, Malli (re:
1); Jacob Schultes & his wife(re:2); Johannes Schumacher & his wife,
Catharina (re:3)

Marilyn B. Penrose at the keyboard of her Mohawk Valley database. Marilyn is well known both to Canadians and Americans searching Revolutionary War ancestors in the Mohawk Valley area. Her three books on the topic *The Baummann-Bowman Family of the Mohawk, Susquehanna, & Niagara Rivers, Mohawk Valley in the Revolution: Committee of Safety - Papers and Genealogical Compendium*, and *Indian Affairs Papers: American Revolution* are key works for genealogists studying the period.

DEATH RECORDS

DECEDENT(S)

LAUCKS, Adam, Sr., b. 12/15/1715, Schoharie; m. 10/16/1739;
d. 2/14/1790, age 74 years, 2 months; buried 2/16/1790 (RDSA:231)

LAUCKS, Dorothea, wife of Diedrich Laucks (maiden name: Koch),
b. 1/1/1764, Stone Arabia; d. 10/31/1787, age 23 years, 10 months, less one
day (RDSA:230)

LAUCKS, Heinrich, d. 2/8/1795, age 78 years, 10 months, 23 days;
buried 2/10/1795 (RDSA:236)

LAUCKS, William, d. 4/28/1787 (RDSA:238)

PROBATE ABSTRACTS

TESTATOR

LOUCKS, Jacob, (of Stone Arabia), will dated 11/17/1827; probated
7/19/1828. Legatees: sons, Jacob and Henry; three daus., Nancy, Elizabeth and
Mary. Executors: sons, Jacob and Henry. Witnesses: Henry Loucks, Benjamin W.
Nellis, Richard Near. (MNC, 57:271)

LOUCKS, John W., (of Palatine), will dated 3/4/1828; probated
7/26/1838. Legates: wife, Eva; Jacob Fishback; sister, Christie Anna (wife of
Philip Becker). Executors: Henry T. Dillenback, John Kelly. Witnesses: W. P.
Mrtin, Conrat Conderan, Jacob Fishback. (MNC, 57:277)

TRYON COUNTY MILITIA: AMERICAN REVOLUTION

NAME	RANK	MILITIA	SOURCE	PENS. APPL
LAUCKS, Adam	Private	Second Regiment	NYR	No
LAUCKS, Adam A.	Private	Second Regiment	NYR	W16637 (Magdalena)
LAUCKS, Conrad	Private	Second Regiment	NYR	No
LAUCKS, Dieterich	Private	Second Regiment	NYR	R6461 (no papers)
LAUCKS, George	Private	Second Regiment	NYR	S13793
LAUCKS, Hendrick	Private	Second Regiment	NYR	S45899
LAUCKS, Henry W.	Private	Second Regiment	NYR	No
LAUCKS, Jacob	Private	Second Regiment	NYR	No
LAUCKS, John	Private	Second Regiment	NYR	No
LAUCKS, Peter	Private	Second Regiment	NYR	No
LAUCKS, William	Private	Second Regiment	NYR	No

REVOLUTIONARY WAR PENSION ABSTRACTS

VETERAN

DATA

LOUCKS, Adam A.

b. 5/27/1747, son of Adam Loucks; a. Magdalena Loucks, 10/28/1778; d. 6/5/1828, Palatine, Montgomery Co., N.Y. (Magdalena Loucks, b. 5/1/1755, Stone Arabia, dau. of William Loucks.) Adam A. was a private in the 2nd. Regt. Tryon Co. Militia and served in Capt. Christopher H. Fox's Co.. He was in the battles of Oriskany, Stone Arabia, Cherry Valley and Johnstown. (RMPA: #M16637)

LOUCKS, George

b. 1759; resident of Palatine, Montgomery Co., N.Y. on 9/7/1832, age 73 years, 4 months, 21 days. Entered the militia about 1776 and served as a private in the 2nd. Regt. commanded by Col. Jacob Klock & Lt. Col. Peter Haggoner. He was in battles at Brown's (10/19/1780), Landbands (7/29/1781), and Johnstown (1781). He lived "a short mile from Fort Paris previous, during, and ever since the close of the War". (RMPA: #S13793)

LOUCKS, Henry

b. ca. 1758; a. Eve [?] (b. ca. 1764). Children: David, b. 1808/09 (age 13 years in 1822). Henry enlisted in 1776 at Rome, N.Y., served as a private in Capt. Swartwout's Co., Col. Peter Gansevoort's N.Y. Regt.; was at Battle of Fort Stanwix, also in Gen. Sullivan's Expedition; transferred to Capt. Geo. Syltez's Co., Col. Van Schaick's N.Y. Regt.; was at taking of Cornwallis and was discharged on 6/6/1783. Henry applied for pension on 4/16/1818, resident of Manheim, Herkimer Co., N.Y.; lived in Lewville, Lewis Co., N.Y. in 1822. (RMPA: #SA5899)

DEED ABSTRACTS

DEED

Hendrick Loucks, and Elizabeth, his wife, of Palatine District, Tryon Co. to John Bradpick [Breadbake], of the same place. Deed dated 1/4/1774; recorded 2/4/1774. Description: All that certain message, house, and farm of lands now possessed by the said John Bradpick [Breadbake]. Consideration: L250. Witnesses: Elias Hendrickson, Peter Wagner. (MVL:26)

Hendrick Loucks, and Elizabeth, his wife, of Palatine, Tryon Co. to Johannis J. Shults (son of Johannis Shultz, decd.), of the same place. Deed dated 1/4/1774; recorded 3/4/1774. Description: All that certain message, house, and farm of lands now possessed by the said Johannis J. Shults. Consideration: L250. Witnesses: Elias Hendrickson, Peter Wagner. (MVL:26)

1790 FEDERAL CENSUS, MONTGOMERY CO., NY

1790 HOF	MONTG. CO.	M 16 +	M 16 -	F	OFF	S
LOUKS, Adam	Palatine	2	3	4	0	1
LOUKS, Andrew	Canajoharie	2	0	2	0	?
LOUKS, Cornelius	Canajoharie	2	0	3	0	?
LOUKS, George	Palatine	1	2	3	0	5
	Palatine	3	1	2	0	0
LOUKS, Henry	Palatine	3	3	3	0	?
LOUKS, Henry A.	Palatine	1	0	1	0	?
LOUKS, Jacob	Palatine	1	0	1	?	?
LOUKS, John	Canajoharie	2	1	5	1	2
	Canajoharie	3	2	2	0	?
	Mohawk	1	0	2	0	0
LOUKS, Joseph	Palatine	1	3	2	0	0
LOUKS, Peter	Canajoharie	1	3	2	0	?
	Palatine	3	3	3	0	0
LOUKS, Peter H.	Palatine	3	0	3	0	?
LOUKS, Wendell	Palatine	1	0	1	0	?

Software That Works For Generations

**6 Types of Charts and Sheets
Indices
User Fields
Notes, Footnotes and Sources
No Limits
Adapts to Your Hardware
Comprehensive
Easy to Use
And Much, Much More**

Send for brochure and sample printouts.

Family Roots includes detailed manual and 2 full diskettes
of programs for your Apple II, II+, IIe
IBM PC, Commodore 64 and CP/M.*

Other genealogy software also available.

*Trademarks for
Apple Computer,
Inc., International



Business Machines,
CBM, Inc., & Digital
Research.

QUINSEPT, INC.
Distributed in Canada by Generation Press
172 King Henrys Boulevard
Agincourt, ON M1T 2V6
416/292-9845

Early Patentees, London, Canada West 1828-1842

By Albert Stray & Gail Clothier

The late Gail Clothier of London, Ontario, was an avid genealogist, and always thinking of the information she could compile and provide for others, rather than of her own more narrowly focused genealogical reseaches. Albert Stray, of course, is well known to readers of Canadian Genealogist for his excellent articles on William Hamilton Merritt, and the Lincoln Militia.

In a letter accompanying his submission Mr. Stray adds: "This work was initiated by the late Gail Clothier of London. She was working on transcribing the names of all the first patentees of London and London Township. In order to get this material out for use I have narrowed the focus to the years 1826 to 1842, as I explain in my introduction. Before she died, Gail had asked me to complete her work, and this is part of it."

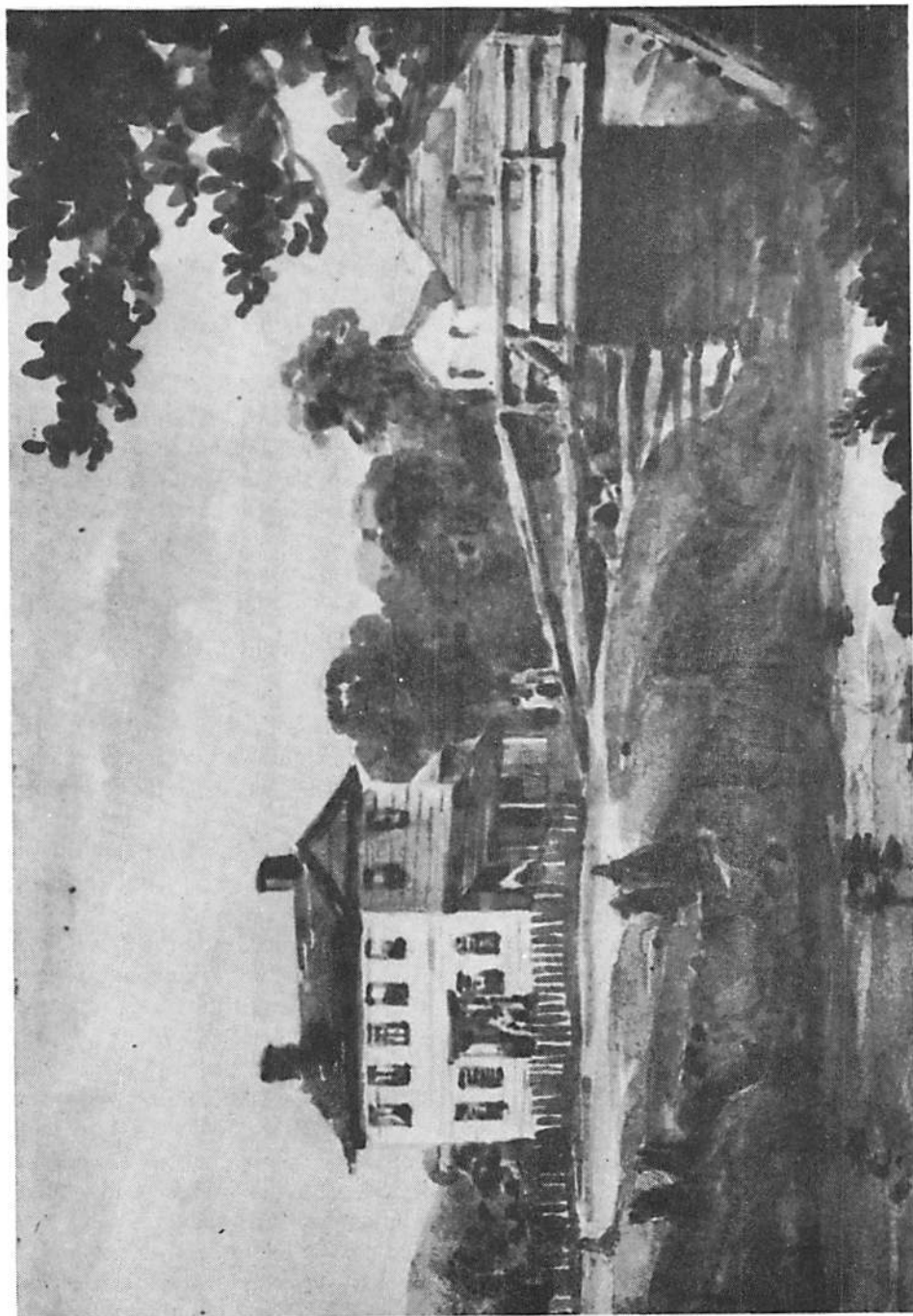
The editors of this magazine are pleased and proud to publish this part of Gail's genealogical legacy to Canadians. We also very much appreciate the fact that Mr. Stray has picked up the threads of Gail's research to the point that this article is possible.

London came into being with the passage of 7 Geo. IV, Chap. XIII (Jan, 30, 1826). It established the "district town of London in a more central position," moving it from Vittoria to "near the forks of the River Thames, in the townships of London and Westminster". As originally laid out by Mahlon Burwell, the townsite consisted of 240 acres. The village stretched east to Wellington Street, and as far north as present day Queen's Avenue (North Street) while the river provided both the southern and western boundaries.

Peter McGregor, a Scottish tailor, had the distinction of being the first person to move into the new village. His log shanty from which he "dispensed refreshments to thirsty travellers" was located on the south side of King Street at Ridout (lot 21).¹ Jenkins Seed House occupies the site today. By late 1827 McGregor had competition from Abraham Carroll who had built a two-storey frame hotel nearby. It was located "on the north side of Dundas Street, about midway between Riout and Talbot".²

In order to receive a patent (deed) a fee of thirty dollars had to be paid and various settlement duties satisfied. Peter McGregor did not receive his patent until July of 1831. Though the first to settle in London, a woman was the first to obtain a patent. Nellie Diprose who settled on part of lot 18 on the west side of Maitland Street was granted a patent on March 14, 1828.³ However there is also reference to a William Robb being granted a patent sometime in the same year for land on Bathurst Street.

London's designation as the district town was an impetus for growth. From an empty townsite in 1826 the population grew to four hundred by 1832, one thousand and thirty-seven three years later, reaching two thousand and forty-eight by 1841.⁴ Some people came in connection with the building of the new



Dartnell, George Russell (1798-1878): Our House, London, Upper Canada (c1840s?).
Photo courtesy Public Archives of Canada.

court house, men such as Carfrae and Hale. Others like John Tenbrock, a lawyer from Long Point came to practice in the courts. Still others came to supply the wants and needs of the early settlers, eg. Peter McGregor, Abraham Carroll, George Goodhue, John Jennings and Denis O'Brien.

Early travellers to London provided glimpses of what the place looked like. To one it was a "confused-like assemblage of wooden houses of all sizes and shapes" with "stumps of trees. . .in all directions along the street".⁵ Construction of a new court house to replace the one destroyed by fire in Vittoria began in 1827. Gothic in style, it measured one hundred feet long, fifty feet wide and fifty feet high with an octagon tower fourteen feet in diameter. Built by John Edward of Toronto it dominated the village's skyline.

An advertisement in the *Gore Gazette* of 24 November 1827 indicated "roads had been laid out. . .and between twenty and thirty buildings erected including a tavern, a blacksmith's shop and a couple of small merchant's shops". Two years later it contained between forty and fifty houses "all of bright boards and shingles".⁶

Settlement was initially confined to the original boundaries as London was surrounded by "thick forests and measmic swamps".⁷ Ridout Street was the main thoroughfare connecting London Township to the north and Westminster Township to the south via Blackfriar's and Westminster Bridges respectively.

John Harris built his home, Eldon House in 1834 at the north end of Ridout. By then London consisted of some one hundred and fifty buildings.⁸ His white weatherboard home is the oldest surviving residence in the city. This is all the more surprising when one considers that the nearby blocks were destroyed by fires in October of 1844 and again in April of the following year. The names of the property owners and/or occupants can be found in Dan Brock's *Historical Almanac of London* (c1974) and in an article by Orlo Miller which appeared in *The London Free Press* on 23 March 1954. The latter has been clipped and is contained in the *London Scrapbooks* at the London Public Library.

A map of London made in 1839 shows the location of the bridges, churches, court house, mill, the new military barracks and other buildings.⁹ Along Ridout stood law offices, a branch of the Bank of Upper Canada, at least one hotel and the Court House.

London's population and economy had received a boost in 1838 with the arrival of British soldiers and the establishment of a permanent garrison in what is now Victoria Park. This was precipitated by the Rebellion of 1837. Before the barracks were completed at a cost of \$250,000 the 32nd Regiment was billeted at the north west corner of Dundas and Ridout Streets in a building known as the O'Brien Terrace.

In 1840 London was incorporated as a police village. The officials at that time were: John B. Askin, Clerk of the Peace; Gideon Bostwick, Court Crier; Mahlon Burwell, Registrar; William King Cornish, Deputy-Clerk; John Harris, Treasurer; James Mitchell, Judge; John O'Neill, High Constable; Samuel Park, Jailer; and Daniel Rappalge, Sheriff.¹⁰

Settlers were beginning to move beyond the original town survey by this time. The village's boundaries were pushed north to Huron Street and east to Adelaide Street. The Aggregate Statement for the London District shows there were two



Dartnell, George Russell (1798-1878): From the bank of the Thames opposite (sic) Mr. Wilson's house looking north. London, Canada West, by Dr. Dartnell c1839. Photo courtesy Public Archives of Canada.

hundred and ninety-two buildings in the police village in 1840. The majority (two hundred and three) were one storey frame.

London's first nominal census of heads of households was carried out in the spring and summer of 1842. Four hundred and twenty-one 'heads' were enumerated. As might be expected the building trades were well represented among the seventy-five different trades and occupations being pursued. Labourers, both men and women made up the largest single group.

People's medical, legal and spiritual concerns were attended to by two doctors, three surgeons, three druggists, a mid-wife, one attorney, five barristers and three clergy. Other needs were catered to by a variety of merchants including twenty-four inn keepers.¹¹

Between 1828 and 1842 one hundred and eighty-nine patents were granted to one hundred and seventy-two individuals. Most received title to a single lot or part of a lot usually involving a ½ acre. However a few men such as Samuel Peters, John Wilson and John Hawkins accumulated large blocks.

To obtain a patent was no easy matter. A petition of October 1842 signed by thirty-six squatters spells out the conditions. As mentioned earlier a fee of thirty dollars was required. In addition one had to "log-off, burn clear, fence. . .build on and improve" the land. All this required "a considerable outlay (of money), besides our own labor. . .". The tone of the petition hints that there were land speculators waiting for the squatters to falter so they could grab the land at little cost to themselves. A list of the squatters and the land involved is appended.

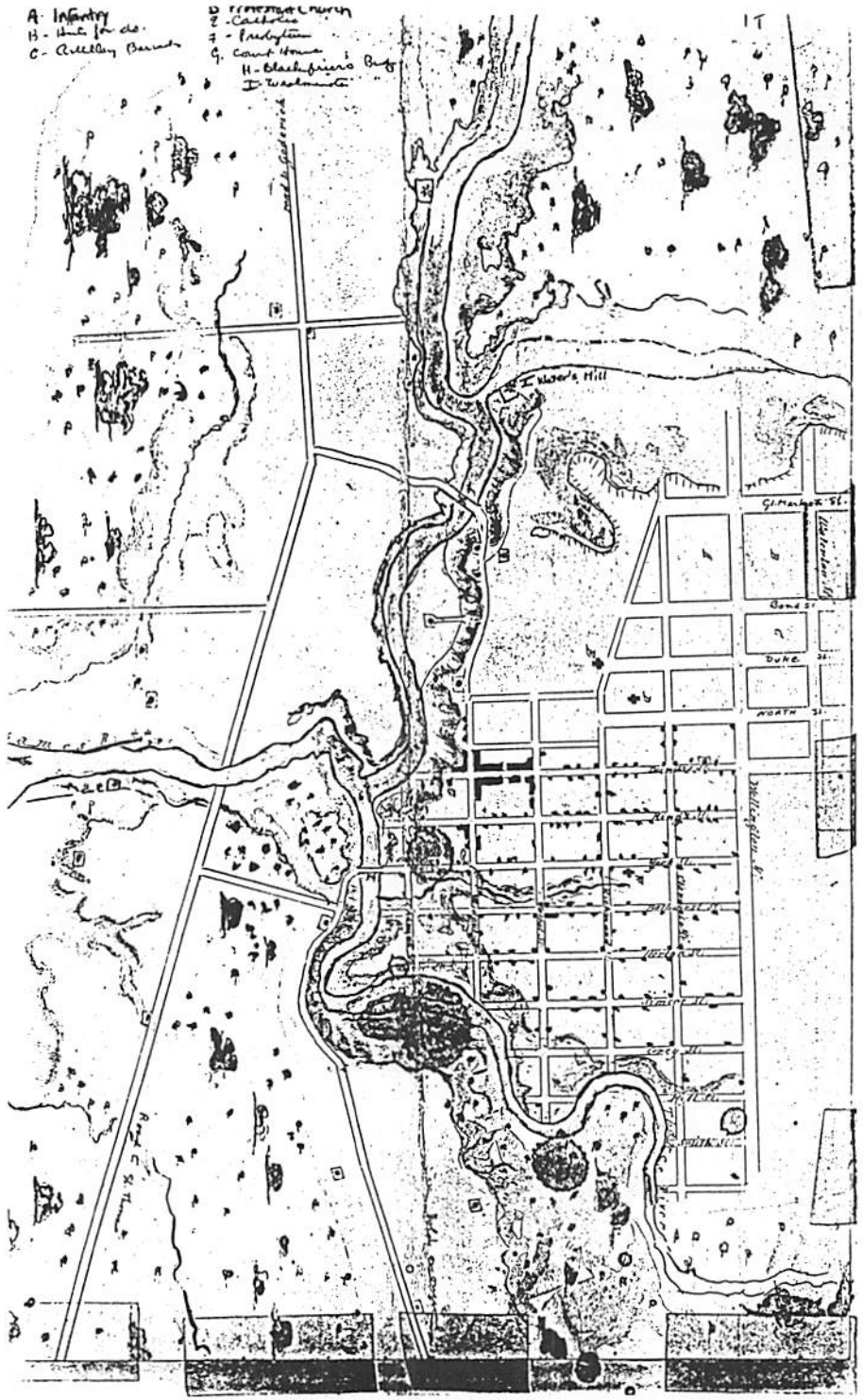
If your ancestor was able to obtain a patent then, despite the fact that he or she may be long gone, the land records remain. In them you may find useful genealogical information including whether or not the person was literate, the names of spouses and children and occasionally a copy of a probated will.

This article deals only with the settlers who were the first to be granted a deed to land in the village of London between the years 1826 and 1842. While the actual records can be found at the registry office in the new Court House here in London, the actual patents that have survived are at the Ontario Archives in Toronto.

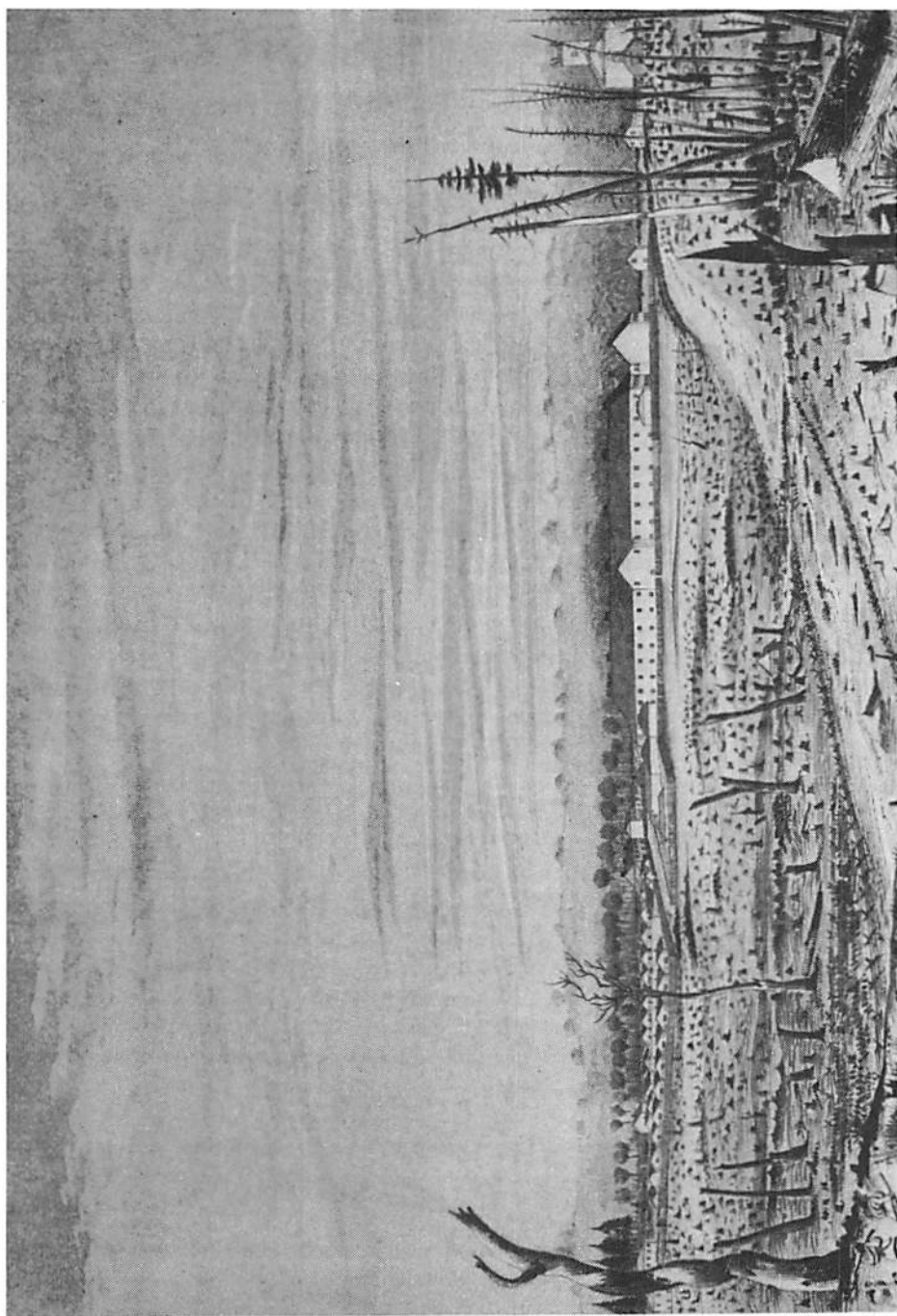
In addition to the names of the patentees I have included the lot, street, acreage and date of patent. It should be remembered that these people in all likelihood settled in London years prior to the granting of the patent. An index to the 1842 Census for London Town and Township was completed last year by me based on the work started by the late Gail Clothier. The list of patentees that follows is meant to begin to fill the gap prior to the first nominal census in 1842. Again this project was initiated by Gail Clothier who used the microfilm "First Patentee's, Registry Office, London City & Township, Middlesex County."

A - Infantry
 B - Artillery
 C - Cavalry

D - Barracks
 E - Castle
 F - Fortification
 G - Court House
 H - Blackfriars Bay
 I - Washmill



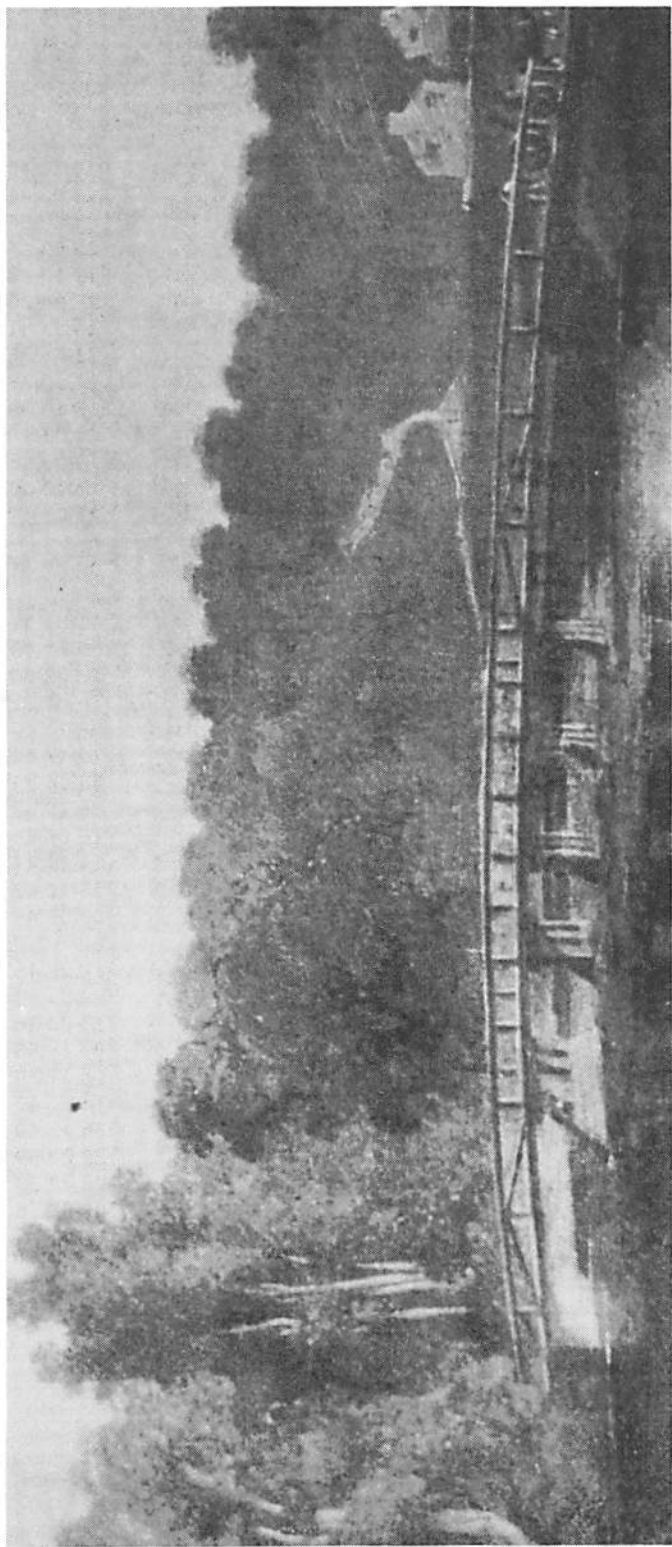
Patentee	Lot(s)	Street	Acres	Date
Abray, Samuel	12	ss Bathurst	½	25.05.37
Anderson, Alexander	20	ns Horton	½	28.09.41
Armstrong, William	11	ns Bathurst	½	15.03.41
Ashton, John	5	ss Dundas	½	03.08.41
Askin, John B.	21, 22	ns Dundas	8/10	16.01.34
Bailey, John M.	13	s on Dundas	½	04.03.39
Balkwell, John	15	ss Simcoe	½	27.07.39
Ball, Thomas Hewetson	6	ns Dundas E.	½	08.04.42
Baty, Thomas (in trust)	13	s on York	½	16.10.38
Beattie, William (in trust)	13	s on York	½	16.10.38
Beecher, Henry C.R.	18	ns Horton	½	27.03.39
Bennett, Philo	26	ns Bathurst	½	24.07.41
Black James	1	ss E. North		06.07.37
Black James	1	ns Oxford	10½	06.07.37
Blair, John	11	ns Horton	½	15.03.41
Brady, Charles James	14	ns King	½	11.03.40
Brown, Daniel	16	s on King	½	11.03.40
Brown, John	18	ss King	½	15.04.36
Burke, Michael	25	ns King	½	18.06.36
Carfrae, Robert	25	ns York	½	15.03.41
Carre, John Hovenden	4	ss York	½	19.07.38
Charles, Right Rev.	21, 22	ns Dundas	8/10	16.01.31
Claris, George Thomas	7	ns York	½	01.12.41
Clark, Rev. William	4	ns King	½	13.05.40
Cole, John	3	park lot, s of Huron e of Wharencliffe Hwy	6	26.08.39
Cole, John	3	park lot, s of Huron w of Wharencliffe Hwy plus Gore s of lot	4	26.08.39
Collins, Henry	7	ss York	½=	22.03.42
Crawford, John	park lot 5 & 6	ws Francis	20	16.06.40
Crummy, Terrence	2	ns King	½	18.11.42
Cronyn, Rev. Benjamin	21, 22	ns Dundas	8/10	16.01.34
Cronyn, Rev. Benjamin	5	s on King	½	27.06.40
Cronyn, Thomas	4	ns Simcoe	½	11.05.41
Cronyn, Thomas	14	ss King	½	29.07.36
Cruickshank, John	11	ss Bathurst	½	22.08.39
Curtis, Silas E.	6	ss North	½	02.12.39
Davis, Philip	2	ns E. King	½	30.04.42
De Burgh, John Henry	5	ss E. Dundas	10½	08.03.42
De Burgh, John Henry	park lot 8	ss Oxford		
Defields, Peter	18	ns King	½	19.12.34
Diprose, Nellie	pt 18	ws Maitland	1/20	14.03.28
Donnelly, Maria Catharine	5	ss North	½	18.10.37
Douglas, John	19	ss Bathurst	½	00.06.86
Durant, Samuel	15	ss Bathurst	½	27.06.36
Ellis, Epaphras T.	15	ss King	½	31.06.38
Elsworth, Ephraim	15	ns King	½	25.05.36
Ewart, John	19, 20	ss Dundas	1	17.06.31
Fennel, Robert	23	ns York	½	21.06.36
Flanaghan, Joseph B.	26	ns York	½	26.11.32
Frank, Richard	9	ns Bathurst	½	15.03.41
Frank, Richard	8	ss Horton	½j	08.09.42



Ainslie, H.F. (1803-1879): Barracks at London, Canada West, 1842. Photo courtesy Public Archives of Canada.

Patentee	Lot(s)	Street	Acres	Date
Fraser, Thomas	12	ss Horton	½	15.03.41
Gafeny, Nicholas	2	ns Dundas	½	14.03.37
Geary, William Jr.	2	ns North	½	13.03.37
Gibson, Elizabeth	13	ss Grey	½	07.01.39
Givens, James	18	s on York	½	31.07.38
Givens, Joseph	9	ss Dundas	½	21.09.38
Givens, Thomas (Gibbons)	11	ss North	½	06.04.35
Glass, Samuel	17	ss King	½	13.06.36
Goodhue, Hon. George J.	20	ns Dundas	4/10	11.09.30
Goodhue, Hon. George. J.	2	ss King	½	07.09.42
Goodhue, Hon. George. J.	8	ss Dundas	½	07.09.42
Gordon, Thomas	15	ns Horton	½	15.10.35
Goulding, James	19	ns York	½	13.06.36
Grieve, Elliot (in trust)	13	s on York	½	16.10.38
Hall, Alinzo	1	ss Dundas	½	29.09.41
Harris, John	16	ss York	½	06.07.39
Hartman, Lewis	21	ss York	½	12.02.35
Haskett, Thomas	25	ns Bathurst	½	15.11.39
Haskett, William	26	ss York	½	30.104.34
Hawkins, John	park lot 2	ss Wharencliffe Hwy	233/4	26.08.39
Henry, Charles	21	ss King	½	15.06.32
Hine, Daniel	park lot 2	ns Grosvenor	18½	16.07.39
Hine, Hannah	park lot 1	Grosvenor	2	18.12.40
Hunter, Jeffrey	2	Furnival Terrace	½	04.12.41
Hutton, William	26	ns King	½	21.06.38
Jennings, John	19	ns King	½	17.01.35
Johnston, Hugh	25	ss King	½	25.01.34
Johnston, Peter	12	ns King	½	03.12.41
Jones, Charles	11	n on Dundas	½	10.11.38
Kissack, Thomas	17	ss Dundas	½	03.12.32
Ladd, Alvaro	17	ns Dundas	½	21.04.34
Lawrason, Lawrence	11, 12	ns Dundas E.	1	16.09.39
Lawrason, Lawrence	22	ss King	½	15.06.32
Lee, Hiram Davis	20	ns Bathurst	½	14.03.37
Lemon, Thomas	17	ns King	½	26.06.38
Marills, Dudley	12	ns Dundas	½	13.06.36
Mason, John Patrick	3	ss King	½	27.03.39
Mathewson, James	3	ss King	½	27.03.39
Mathews, Edward	6	ss Grey	½	07.09.42
Mathews, Edward	10	ns York	½	11.05.41
Mathews, Edward	26	ss Dundas	½	21.06.36
McClatchey, William	3	n on Dundas	½	15.05.40
McCormick, Andrew	11	ss Horton	½	21.03.42
McCormick, Andrew	11	ns Simcoe	½	07.09.42
McDonald, Alexander	7	ns King	½	15.03.41
McDonald, Donald	10	ss York	½	17.11.40
McDonald, Finlay	16	ns King	½	13.06.36
McDonald, John	5	ns Dundas	½	12.09.39
McDonell, Rt. Rev. Alexander	block bounded by Duke & Market Lane		2	06.05.39
MacFadden, James	19	ss King	½	09.05.37
McGregor, Peter	21	ss King	½	25.07.31

Patentee	Lot(s)	Street	Acres	Date
McKenzie, Alexander	3	ss King	½	03.08.41
McLaughlin, John	13	ns Dundas	4/10	10.01.34
McLean, William	14	ss Dundas	½	03.12.33
MacNeal, Hugh	19	ss King	½	21.06.36
Merrill, Lewis	8	ss North	½	29.07.36
Messmore, Jacob	16	ns York	½	18.04.36
Merrick, Joshua	16	ss Dundas	½	09.12.35
Mitchell, George	9	ss North	½	08.03.42
Mooney, Harriet	7, 9	ns E. Dundas	1	25.11.42
Moore, John	park lot A	ss Oxford	12½	23.01.41
Moore, John H.	22	ss Bathurst	½	15.03.41
Morris, Alexander	9	ss Horton	½	16.03.41
Morrill, Simeon	20	ss York		
Morrill, Simeon	20	ns Bathurst	1	10.11.32
Moulds, Valentine	6	ns York	½	04.06.39
Murphy, James	19	ns Bathurst	½	18.03.34
Nichol, Francis (Rev.)	Block D, bounded by Mark Lane, Bond St. & Church St.		1¼	03.02.39
O'Brien, Joseph	park lot 1	n of Wharencliffe	8	05.09.40
O'Brien, William	14	n on Bathurst	½	11.04.39
Odell, James	14	ns Dudas	½	11.10.39
Odell, Joshua Scriver	19	ns Dundas	½	21.04.34
Owen, Oliver	6	ss Dundas	½	14.12.41
Park, William Oxford	23	ns Dundas	½	20.06.36
Patterson, Joseph	1	Furnival Terrace	½	03.12.41
Perrin, Leonard	10	ss North	½	09.11.42
Peters, Frederick William	18	ss Horton	½	15.03.41
Peters, Samuel	park lot 2	ns Victoria	9	10.07.41
Peters, Samuel	park lot 3	ns Grosvenor	ab 13	30.12.40
Peters, Samuel	park lot 3	ss Oxford	10	30.09.42
Pettyfer, Edward	8	ns Horton	½	08.09.42
Pierce, Ephraim	23	ss Bathurst	½	29.01.42
Pixley, Bemus	15	ss Dundas	½	10.11.32
Pringle, George	11	ns York	½	07.03.40
Raymond, Edmund	19	ns Horton	½	21.01.36
Rayner, Thomas	1	ss North	½	28.91.41
Reid, James	5	ss York,	½	16.03.41
Revington, Joseph	1	ns King	½	30.06.39
Ritchie, Edmund	17	ss York	½	24.06.35
Robb, William		Bathurst		.28
Roddy, John & Patrick	park lot 7	ss Oxford	10	30.12.40
Rogers, Peter	25	ss York	½	21.06.36
Rowley, Miron Hopkins	18	ns York	½	10.11.42
Sage, William	10	ns King		10.11.38
Saunby, Joseph	10	ss Simcoe	½	27.10.38
Sawter, Robert	9	ss York	½	21.03.42
Scatcherd, John	21	ns York	½	22.05.37
Scatcherd, Thomas	21	ns Dundas	½	21.04.34
Schram, Benjamin	26	ss King	½	25.05.36



Clark's bridge and Westminster Abbey Hotel, 1843, in Bremner, A., *City of London, Ontario Canada*, London, Ontario, 1897, p. 33. Photo courtesy Public Archives of Canada.

Patentee	Lot(s)	Street	Acres	Date
Schram, Peter	park lot 5	ss Oxford	10	08.07.40
Schram, Peter	11	ss Dundas	½	13.04.41
Sele, Edward	14	ss Bathurst	½	14.12.41
Sharp, John	8	ns Grey	½	23.03.41
Sherman, William	18	ss York	½	01.07.36
Sifton, Charles	23	ss York	½	25.05.37
Smith, Richard (in trust)	14	ss Simcoe	½	12.10.38
Smith, Richard	13	ns York	½	27.04.39
Smith, William	2	ss Bathurst	½	23.03.41
Snell, William	15	ss Simcoe	½	21.06.36
Snell, William	14	ss Simcoe	½	12.10.38
Sowter, Robert	9	ss York	½	12.10.38
Stead, Charles	17	ns Horton	½	24.08.40
Stearns, James	6	ns Dundas	½	13.06.36
Stephen, John	12	s on Dundas	½	22.10.40
Stevenson, Hugh	park lot 2	ns Oxford	10	21.01.41
Stevenson, John	park lot B	ws Wharencliffe Hwy	12½	02.07.41
Stewart, Rev. James	21, 22	ns Dundas	8/10	16.01.34
Stiles, John	park lot	ns Oxford	10	19.12.40
Swart, Tunis	20	n of York	½	03.02.34
Talbot, Allen	21, 22	ns Dundas	8/10	16.01.34
Talbot, John	15	ss Bathurst	½	28.11.40
Talbot, Rose	20	ns King	½	15.11.32
Talbot, William Roberts	10	ss Dundas	½	25.04.35
Terry, Eliza	20	ns King	½	15.10.32
Tierney, Patrick	9	ns King	½	16.03.41
Vanderburg, John Ward	1	ns King	½	14.12.41
Van Every, Peter	15	ns Dundas	4/10	28.12.42
Wastie, Thomas	2	ss York	½	08.02.41
Webster, Isaac	8	ns Dundas	½	0-9.10.38
Wier, Alexander	9	ns Horton	½	19.07.41
Will, Mary	12	ns York	½	22.01.42
Williams, Christopher	7	ss Dundas		21.06.36
Williams, James Sr.	16	ns Dundas	44 10	03.14.33
Wilson, John	10	n of Dundas	½	08.11.39
Wilson John	park lot	ns Victoria	27	14.12.41
Wilson, John	17	ss Bathurst	½	26.12.40
Wilson, John	18	ss Bathurst	½	22.08.39
Yerex, Willilam	22	ns York	½	03.12.33
Young, James	13	ns King	½	09.08.38

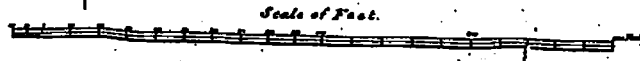
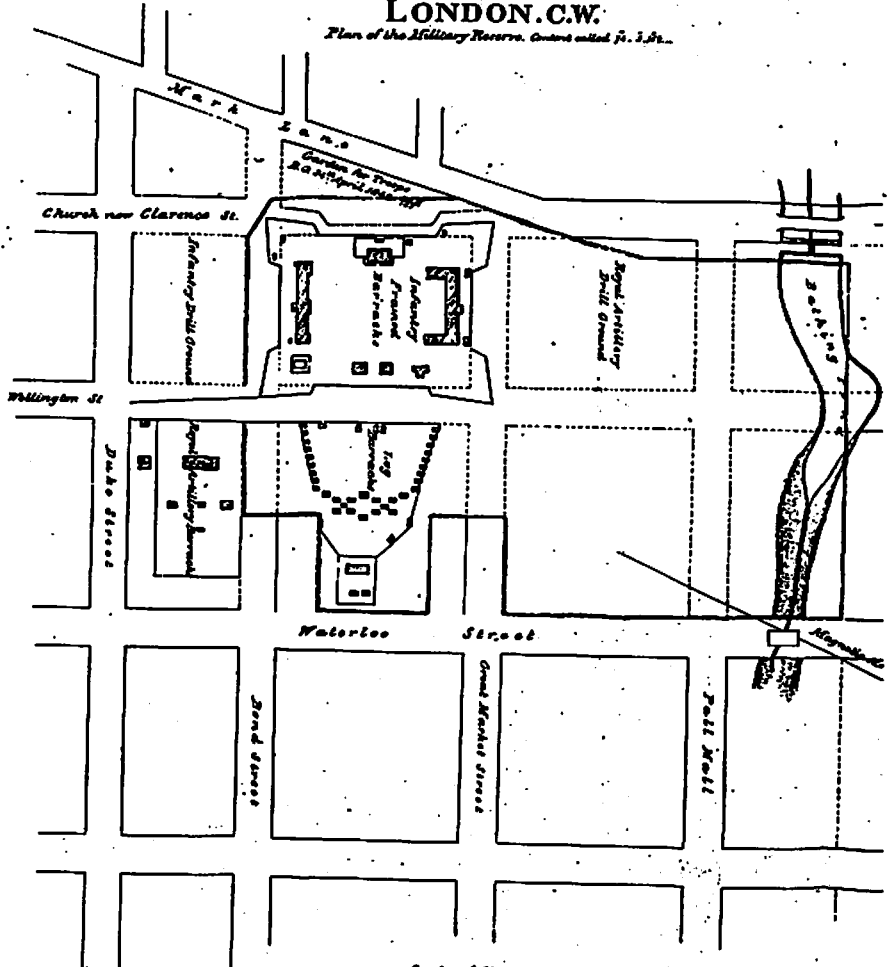
NOTES:

1. *Illustrated Historical Atlas of the County of Middlesex, Ont.*, H.R. Page & Co., Toronto, 1978, p. 8.
2. Brock, Dan, *Historical Almanac of London*, Applegarth Follies, London, Ont., 1975, p. 67.
3. *First Patentees, London City & Township, Middlesex County*, Registry Office, microfilm.
4. *Illustrated Historical Atlas of the County of Middlesex*, p. 6. and "Aggregate Assessment of the London district", Appendix U, 4-5 VICTORIA.
5. Lutman, John, *The Historic Heart of London*, Corporation of the City of London, Ont., 1977, p. 6.
6. *Historic Sketches of London, Ontario*, London and Middlesex Historical Society, 1908, p. 28.
7. Lutman, John, *The Historic Heart of London*, p. 7.
8. Elliott, John K. & Terrence H. Honey, *London Heritage*, Phelps Pub. Co., London, Ont., 1979, p. 4.
9. Map courtesy of the late Madeline Reddick.
10. *Historic Sketches of London, Ontario*, p. 27.
11. Clothier, Gail & Albert Stray, *Index to 1842 Census of London Town & Township*, London, Ont., 1986, Appendix.

N 716

LONDON. C.W.

Plan of the Military Reserve. Ground called for 3. 5. 6.



Henry Clarendon
 & Co. of Engineers
 made on 26 October 1877

**APPENDIX: SQUATTERS ON LAND IN THE NEW SURVEY
OF THE TOWN PLOT OF LONDON, 4 OCTOBER 1842**

Name	Land
Allen, Jonah	a small block of six lots, being now 43, 44, & 45 at the northern extremity of the town plot between Colborne and Maitland Streets
Bench, James	a park lot, 10 acres, being nos. 23, 24, 25, 26, & 27 between Wellington and Waterloo Streets
Carling, Thomas	4 lots, being nos 11 & 12 bounded on the west by Waterloo Street, on the east by Colborne Street
Cranmer, Jeremiah	a small block of six lots at the northern extremity of the town plot, nos. 43, 44, & 45 between Wellington and Waterloo Streets
Donnelly, Charles	half a block 5 acres, bounded on the north by O'Meara, west by Waterloo Street, east by Colborne Street, and south by St. James Street
Egan, John	a park lot 10 acres, being nos. 38, 39, 41, 41, & 41 between Maitland and Waterloo Streets
Ellis, James	2 lots, being no. 17 lying between William St. and the allowance for a road at the eastern extremity of the town plot
Finley, John	a park lot of 10 acres, being lot nos. 28, 29, 30, 31, & 32 between Colborne & Maitland Streets
Fletcher, Thomas	one lot being no. 19 on the east side of Maitland Street, a discharged soldier
Hasted, Frederick	a small block of 4 lots on the west side of Wellington Street being nos. 16 & 17 and 2 lots on the east side of Wellington Street, nos. 16 and 17
Herring, Job	half a block or 6 lots, being nos. 6, 7, 8 between Colborne Street and Maitland Street
Homan, Mary (widow)	one lot being no. 6, on the east side of William Street
Hutchison, Charles	6 lots or a park lot of 10 acres, being now. 13, 14, 15, or 11, 12, 13, 14, 15 between Colborne and Maitland Street

Name	Land
Jacques, William	8 lots, being nos. 18, 19, 21, 21 bounded on the west by Waterloo Street, east by Colborne Street, south by Oxford Street, and north by Andrew Stone
Kelly, Andrew	2 lots, being nos. 8 & 9 or 9 & 10 (not certain, as the stakes are gone on the west side of Maitland Street)
McLean, John	a discharged soldier, 2 lots being nos. 11 & 12 on the allowance for road
McDonald, Alexander	a park lot 10 acres being nos. 18, 19, 20, 21, & 22 between Colborne and Maitland Streets
McGill, Owen	4 lots, being nos. 14 & 15 between Wellington Street and the Plank Road
McKanes, Daniel	2 lots being nos. 21 & 21 on the allowance for road at the eastern extremity of the town-plot
McKenna, William	a discharged soldier, 2 lots being nos. 13 & 14 on the allowance for road at the estern extremity of the town-plot
Morrison, Thomas Sr.	2 lots being no. 15, bounded on the east by Colvorne and on the west by Waterloo Street
Morrison, Thomas Jr.	3 lots being nos. 3, 4 & 5 on the allowance for road at the eastern extremity of the town-plot
Murphy, Charles	a small block of 6 lots being nos. 43, 44, & 45 between Maitland and William Streets at the northern extremity of the town-plot
O'Meara, Patrick	half a block, 5 acres, bounded on the west by Waterloo Street, east by Colborne Street, north by Grosvenor Street and south by Chas. Donnelly other half
Quigley, John	a park lot 7½ acres being nos. 28, 39, 40, 41, & 42 between Wellington Street and the Plank Road
Reynolds, Silas	2 acres being now. 7 & 8 on the east side of Willilam Street
Ryan, Mathew	a small block of six lots now. 43, 44, & 45 at the northern extremity of the town-plot west of the Plank Road

Name	Land
Scripture, Calvin	a park lot 10 acres being nos. 33, 34, 35, 36, & 37 between Wellington and Waterloo Streets
Stewart, John	a small block of 4 lots being nos. 16 & 17 lying between Maitland and William Streets
Stone, Andrew	2 lots, being no. 22 between Waterloo and Colborne Streets, bounded north by St. James Street, south by Jacques
Thomas, Isaac	2 lots being nos. 18 & 19 on the east side of William Street
Tigert, Rhynix	2 lots, being nos. 26 & 27 on the west side of William Street
Wells, John	a park lot of 10 acres being lot nos. 23, 24, 25, 26, 27 between Colborne and Maitland Streets
Winemiller, George	2 lots being nos. 18 & 19 on the allowance for the road at the eastern extremity of the town-plot

Source: a letter to His Excellency Sir Charles Bagot, Governor General of British North America dated London, Oct. 4th, 1842. The letter is in the Public Archives of Ontario, Toronto.

An outline of Snelson genealogy in the U.K., Canada, U.S. and Australia

By Charles J. Snelson

"As a first-generation Canadian I have always been interested in my British roots," writes Charles J. Snelson of Oakville. "During the past five years or so I have compiled family and general Snelson data into a reasonably comprehensive family history. Initially, this was for the private information of my immediate family.

"In the course of one of my research junkets to England, I came upon information suggesting that the original Snelson immigrants to Maryland and Virginia, in 1698 and 1716, might well be shoots from a common English family tree. I now have stronger evidence to support this proposal.

"These findings are condensed in the following summary of Snelson genealogy. It also contains related Snelson data that might be of interest.

"I am not a professional genealogist. However, as a member of the Ontario Genealogical Society I have become increasingly aware of the importance of family history to many people."

The editors of this magazine were pleased to have the opportunity to discuss the publication of Mr. Snelson's genealogical research, and urged him to allow us to publish this short summary of his work. The paper was originally presented to a family reunion in Asheville, North Carolina, last year.

Beginnings

Snelson is an ancient English place and family name, originating in Cheshire and probably rising from Scandinavian roots which were likely put down in that county about 800 A.D.

The earliest written evidence for the history of the Snelson name is in the Domesday Book, compiled by order of William the Conqueror in 1086. This book was a survey of all the land of England, with details of all inhabitants and the land itself. Language experts inform us that the pre-conquest Cheshire place name Senelestune (the origin of Snelson), listed in Domesday, appears to be Old English. The term 'tun' or 'tune' was Old English for 'fence' or 'hedge', and progressively grew to mean 'town'. The 'Seneles' part of the name was probably Old English or Old Nordic for Snel. Snel, or Snell, in turn, in both Dutch, Danish and German means 'smart, keen, or sharp'. In Old English it means 'courageous and swift'. It also became a personal name.

There were four other place names listed in Domesday that also contained the 'Snel' and 'tun' roots. These were all geographically close to Senelestune. Since these four were all in areas to which the Danes (or Vikings) were dispersed, following their defeat and subjugation by King Alfred the Great in the late 800s, it is reasonable to suppose that Snels were among the relocated Danes, and between approximately 880 and the time of the 1066 Conquest they, or their descendents, founded the five sites.

It doesn't take too much imagination to see how Senelestune could, over the

centuries of spelling and pronunciation variations, finally emerge as Snelson. Similarly, the other four names evolved to their present names of

Snelston — Derbyshire

Snelston — Rutland (now disappeared)

Selston — Nottinghamshire

Snelland — Lincolnshire

Cheshire

My condensed interpretation of the Cheshire Senelestune reference in the 1086 Domesday Survey is:

Randle (Rannulfus) holds Senelestune. Approx. 30 acres is taxable producing land. The balance, approx. 400 acres, is uncultivated or grazing land.

Today, Snelson is a civil parish in Cheshire with a 1961 census population of 184 and comprises 427 acres. It is a quiet, flat land of farms. The principal group of houses numbers about ten, and a Methodist Church is among these. Snelson is about 5½ miles southeast of Knutsford, Cheshire and just west of Macclesfield. There is one other Snelson place name in England. It is the name of an old Manor Farm near Lavendon in Buckinghamshire. We are not sure of its origin but suspect a Snelson owned or leased it a few centuries ago. It was not named in Domesday.

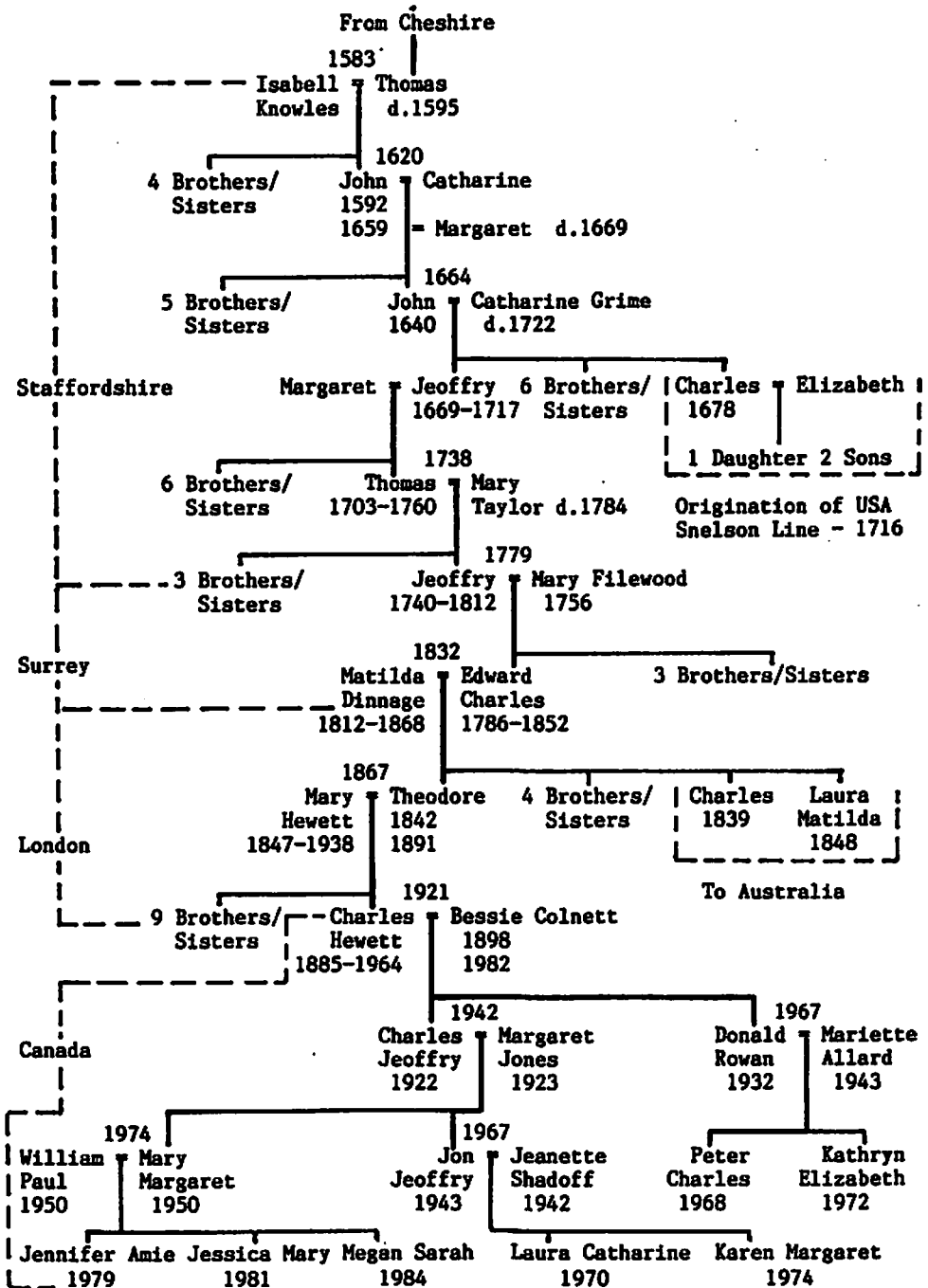
Old Cheshire historical records show a few Snelson references, mainly concerning land and other legal transactions from around 1200 to the 1600s, when the main family branch male line apparently terminated. Earlier offshoots perpetuated the family name in other areas in England, including Lancashire and our direct line in Staffordshire. Before moving on to these we should mention the arms attributed to the Snelsons of Snelson in Cheshire.

A Cheshire history, written in 1881, refers to a scythe as an arms device that was adopted by the Snelsons. It was a black scythe on a silver field. Other sources confirm the same information. My cursory search at the only 'official' record, the College of Arms in London, revealed the arms were granted in 1633 to Sneston (probably a variant spelling of Snelson). Other families have recorded the same device. The scythe definitely suggests a farming background or way of life.

Staffordshire

At some point in time our ancestor Snelsons moved from Cheshire to Staffordshire, to an area roughly 35 miles south of Snelson. This move was to a then-pioneer-type farming land known as Greatwood. It is about three miles west of the market town of Eccleshall. One theory on this move south concerns a battle of the Wars of the Roses period. Near Greatwood, at Blore Heath, a 10,000-man army from Cheshire and Lancashire, raised by Lord Audley, was defeated. It is theorized that his forces contained Snelsons and that they either remained in the area, or returned later. This all occurred in 1459. Thus far, positive family linkage between Cheshire and Staffordshire eludes us.

SUMMARY OF OUR BRANCH OF SNELSON LINEAGE - 1988



In any event, the earliest Snelson that we have found in Staffordshire records (a Muster Roll of 1539) is a John Snelson who "did not have his own weapon." This statement implies he could have been a yeoman farmer who only took up arms when required by his manor lord.

Since church parish records did not exist in England prior to 1538, and even later in some parishes, lineage search is very difficult unless you were from the aristocracy or were mentioned in legal documents. In our case, the earliest probably direct ancestor I can find in Eccleshall Parish records was Thomas Snelson, who married Elizabeth Knowles in 1583. He was probably born circa 1550-1560 in Greatwood. He died in 1595. He was a yeoman farmer and the pair had five children, the youngest of whom as Johannes (John).

John was baptized at Greatwood on 10 February 1592. He had two wives, Catherine in 1620 and Margaret in 1632. He had six children before his death in 1659. His eldest son Thomas appears to have inherited the farm rights while his youngest son John, our direct ancestor, left the farm for Eccleshall and a mercer's trade. A mercer was a dealer in fabrics and associated products. He appears to have been reasonably successful at this business. This John was born in 1640, married Katherine Grime in 1664 and had six sons and two daughters. He died in 1690. The third son, Jeffry (1669-1717), was the direct ancestor of my family branch. He inherited the mercer business from his father and developed it further. The youngest son Charles, born 1678, is believed to be the Charles Snelson who immigrated to Virginia in 1716.

USA

The evidence supporting the identification of this Charles as the Virginian settler is acknowledged as circumstantial, but very strongly so. My research, in concert with data from Leona Smith's publication, *Snelson Lineage and Historical Record*, is condensed as follows:

- From Eccleshall Parish Record, "1678, Oct. 3, Bapt. Charles son of John Snellson." This date ties in with the *Snelson Record*, p. 28, "born ca 1680".
- I can find no record of Charles's death in England.
- There is strong name continuity. John and Catherine can be seen in parents and grandparents. Charles also had a brother John as well as a brother William. Charles named his children Catherine, William, and John.
- Charles possibly had two wives (concurrs with *Snelson Record* p. 5). One, probably the first, appears to have been Elizabeth. William named his daughter Elizabeth — also a granddaughter (*Snelson Record* p. 29).
- Charles's daughter Catherine is referred to in the *Snelson Record* as being born c1704. This would mean she had been married to Christopher Smith (*Snelson Record* p. 5) by 1716 at the age of 11. I believe she was Charles's first child, and was born c1699. This is a better age fit for her marriage.
- The name Smith is not prolific in old Eccleshall records. However a William Smith, Gentleman, married the widow of Jeffry Grime in 1659. This Jeffry was maternal grandfather to Charles, so there was a Smith/Snelson relationship earlier. Possibly this relates to the marriage of Christopher Smith and Catherine later on.
- Captain John Snelson (*Snelson Record*, pp. 2-3, Maryland) was a mariner

from London who settled in the U.S. in 1698. Following his death his property was sold by a nephew, John Ogle, of Chapel Chorlton, Staffordshire. Ogle's mother was Mary, Captain John's sister. Chapel Chorlton is within two miles of Greatwood and other known Snelson family locations. It is possible that Capt. John was Staffordshire-born, and kin, before moving on to London and a mariner's life.

- Charles's eldest brother William is referred to in his father John Snelson's will of 1690 as "of London". It is possible that William and Capt. John were connected in London. Charles may have been influenced by them to go on to America.
- The fact that my fourth great grandfather, Jeffry, inherited the mercer business from father John may have been a key incentive for his youngest brother Charles, seeing no future in England, to take off for America.
- Finally, when we were invited to our first Snelson reunion in North Carolina in 1985, we were struck by the strong physical resemblances of a number of our newfound U.S. Snelson friends to paintings and old pictures I have of our English ancestors. I am certain we are directly related.

I am continuing the search for more positive connecting data, but from my most recent hunting trip to England this past April I find the 'pickings' are becoming much slimmer.

Canada and Australia

To conclude this summary, my direct family moved from Staffordshire to Surrey in the mid 1700s. My grandfather was born in London, as was my father. My father was the only one of our direct line who came to North America. He was in the U.S. Army from 1909 to 1916 when he then joined the Canadian Army in World War I. He returned from overseas to Canada in 1920.

A great uncle immigrated to Australia in the mid 1800s. I am currently searching the Australian connection as well.

The direct family is presently traceable through 12 generations to the mid 1500s.

Finally, in the British class system, Snelsons generally appear to have missed the serf and peasant category, as well as the nobility. Family members seem to have covered a range of occupations from yeoman farmers, tradesmen and lawyers to upper middle-class gentlemen and the clergy, at least as far as the late 1700s.

While not a large family compared to more common British names, records indicate that several hundreds of Snelsons have lived, and still do, in many parts of England. There are now about eight families of other Snelson branches across Canada. I suspect they are mainly of U.S. origin, although I have recently found that one of these was rooted in Manchester, England. There are many more in the U.S. I understand that some 1,800 U.S. citizens bear the name. There is also at least one Australian branch originating from the direct English lineage.

Letter from a 49er

Contributed by R. Alex Collins

"Enclosed is a transcription of a letter about a Canadian who was an honest-to-goodness '49er' in California's early history," writes Alex Collins about the fascinating document we print here. He discovered it in the Public Archives of Ontario in the Records of the Probate Court, Canada West, RG 22, Series 6-1-A, File: Snow Edison, 1850.

"Actually," writes Collins, "Snow Edison was born in Nova Scotia before Confederation so he might not count as a Canadian in the strict sense of the word; however I believe that all current conventional wisdom says that he was." For an interesting sidelight into both Canadian and Californian history, read on.

Sacramento Hospital Sept 18th 1849

Mr. Sam'l Edison

My Dear Friend — It has become my painful duty to inform you that your brother, Snow Edison is no more. He died at the Sacramento Hospital on the 16th day of Sept'r, of Dysentary attended with hiccoughs the last three days. He was attacked violently while on his way from the mines to Sacramento City. The Company had stopped at the mines (called 'dry Diggins') to rest themselves, and teams a short time before going to the City (where I had preceded them a few days) and were on their journey down when your brother was taken sick. Immediately upon his arrival I called a physician who attended him four days, but gave him no relief. We then brought him to this hospital where he received the kindest care, and good medical treatment. We left him here on the 10th Inst, and were told by Dr. Cragin that he thought there was no doubt of his recovery, and would be able to leave within five or six days. This information induced us to leave him (thinking him perfectly safe) until the time set to take him away. I left the Company yesterday morning for that purpose and arrived here this morning expecting to find him nearly well, but he was in his grave, free from the cares and troubles of this world. He told me on the 3rd day of his sickness that he expected to die, that he had no hopes of recovery, and wished me to settle his business with the Co. and to deliver to you his effects, or the avails of them, or such as shall be disposed of for the benefit of his children, which duty shall be strictly attended to, according to his wishes express to me, by him. Your brother has during my acquaintance with him conducted himself honorably, and manfully, and I can assure you that I deeply, and sincerely sympathize with you, on the decease of your brother, and that such will be the feelings of the Company when they learn the sad news of his death. And I can further assure you that no trouble or expense has been spared for his comfort and speedy recovery. This expense is paid by the Co. equally. I will give you a copy of the charges at the hospital as by a bill just receipted by Dr. Cragin to myself — viz —

Snow Edison to Sacramento Hospital for

1849 Sept 16th to 6 days Medical attendance in Hospital	
1849 from Sept 10th to 16th inclusive at 25 Dolls per day	\$150.00
1849 to washing and laying out his body	16.00
1849 Expenses attending his funeral	16.00
1849 to C.E. Abbot for digging the grave	16.00
1849 to Cash pd Talbot & Co for Coffin	60.00
1849 I.L. Fowler use of carriage at funeral	4.00
	\$262.00

The four days attendance previous to coming to the hospital is yet to be added. His effects will be delivered to you the first opportunity to deliver them safely. Your brother is buried under a large live oak tree, about 80 rods east of Suter's Fort, and about 30 rods from the south road leading from the Fort over the California Mountains, please remember me to Your Family and my friends generally,

Yours Sincerely

(signed) E.B. Atherton
for Milan Co.

Missing church records of Sombra Township, Lambton County, Ontario

Compiled by Kathryn Arnold, UE

'These birth and baptism dates for Protestant churches in Sombra Township, Lambton County, Ontario were obtained from the attic of a private home long enough for me to copy them,' writes Kathryn Arnold of this little genealogical find.

'Black Creek Presbyterian Church was torn down before 1929, although the cemetery is still in use. Neither local nor provincial bodies, civil or religious, have any church records pertaining to Black Creek Cemetery,' she says.

'The church at Wilkesport was Methodist, founded in 1873. It is still in use today as a United Church of Canada.

'The 'church' at Sydenham is a mystery, since it is the river running by Wildesport branching into Black and Bear Creeks. My 84-year-old grandfather had never heard of this church. I have been wondering if it is supposed to be the Wilkesport Baptist Church, which was closed in the 1970s.

'Some of the dates and names are missing from this list, possibly because the first person to copy them could not read parts of the handwriting. I would be cautious about using these records as a completely accurate source, although my family, which has lived in Sombra Township for 110 years, thought most of the names were accurate.'

We are always glad to publish nuggets such as these, especially since no records at all seem to exist for these parishes. Use them with a grain of salt — but perhaps they'll supply that missing link in your genealogy. For the record, the dates are listed in day, month, year order.

INFANTS BAPTIZED AT SYDENHAM

Father	Mother	Child	Born	Baptized
Levi Stockton	Jane Scott	Hannah Violet	07.10.60	05.10.72
	Daniel Clayton	30.01.63		
John Freeman	Louisa Stockton	Jane Eliz. A.	09.09.72	
Hamilton Cranston		Sarah		
		Margaret		
		Mary		
		William Henry		
David McQuarrie	Harriet Stewart	Nichol	08.05.72	27.06.73
		Martha	08.05.72	27.06.73
Thomas Burgua	Anne Fraser	Margaret	23.05.72	
John Reid	Elizabeth Grant	Wm. Alexander	23.05.74	16.05.75
James Chisholm	Elsie Grant	Anne Grant	29.06.74	
Alex McConechie	Jane Phibbs	John	15.12.74	
Thomas Burgua	Anne Fraser	Charles	??.09.70	
		Ida Bell	05.12.74	
Jame Reid	Nancy Bryden	Janet	03.07.81	18.09.81
John McIntyre	Margaret MacHolland	John	08.04.83	22.07.83

INFANTS BAPTIZED AT WILKESPORT

Father	Mother	Child	Born	Baptized	
William McRae	Susan Surdevant	Fanny Louisa	03.06.65	11.09.76	
		John Henry	24.07.67		
		William B.	20.03.69		
		Jame Edmund	10.09.71		
		Sarah Elizabeth	20.073		
		Ira Daniel	29.12.75		
Thomas Percy Alex Maitland	Martha Ann Percy Margaret Grey	Gordon Columba	30.06.76		
		Agnes	18.12.73		
		Thomas	19.12.75		
John Wilson James Mark	Violet Grieve Jane Mark	Thomas	22.01.83	22.07.83	
		Alexander	22.04.76	20.07.83	
Thomas Scott	Katie Scott	Robert John	02.04.78		
		Margaret	24.02.80		
		Jane	08.02.83		
		Mary Ann	18.03.72		
		James	20.04.75		
		Ruben Alex	20.02.77		
		Abbie Rubina	03.09.79		
		John	10.04.81		
William McRae John B. Grieve William McRae Edward W. Sexsmith	Susan Studevent Elisa Grieve Susan Sturdevant Lidie Clemense	Cassie Jane	24.04.83	16.07.83	
		Donald	20.02.82		
		Amelia	24.02.81		
		Alexander	11.04.85		13.09.85
		Lena Dell	24.10.83		
		Clemense Albert	25.06.85		

BAPTISMS OF INFANTS, BLACK CREEK CHURCH

Father	Mother	Child	Born	Baptized
James Murray	Sarah Anne Chesney	Martha	29.08.72	05.10.72
		James		05.10.72
Harvey Arnold	Margaret Murray	Edmund	28.12.71	05.10.72
		Sarah		05.10.72
Marmaduke Pretty	Amelia Kendall	Francis. Ch.	17.01.72	27.06.73
Thomas Scott	Isabella Maitland	Peter	16.09.72	
Mrs. Asel Wright	sponsor	Abel	01.08.70	
Archibald McGregor	Janet Hislop	Jessie B.	14.09.73	28.09.73
Charles Wilson	Eliz. Mandeville	James Alex	24.09.72	30.06.73
John Blacklock	Eliz. Ferguson	Angy Isabel	23.03.74	19.04.74
Charles Wilson	Eliz. Mandeville	Flora Kate	24.05.74	20.06.74
Robert M. Peattie	Margaret Cunningham	Wm. Allan	11.11.73	
John Grant	Margaret McKellar	Christina	01.09.73	
Marmaduke Pretty	Amelia Kendall	Martha Jane	20.09.74	25.10.74
Harvey Arnold	Margaret Murray	Andrew Murray	01.01.74	26.10.74
James Heddle	Mary Ann Shewan	John D. McK.	14.09.74	25.10.74
James Murray	Sarah A. Chesney	Andrew	13.09.74	10.01.75
Thomas Percy	Martha Anne	Ellen Jane	12.12.74	??
James Murray	Sarah A. Chesney	Margaret Jane	23.11.75	06.02.76
John Grant	Margaret McKellar	Sarah Jane	27.01.76	04.06.76
Harvey Arnold	Margaret Murray	Andrew Murray		
John Grant	Margaret McKellar	John Glass	01.05.79	31.08.79
Harvey Arnold	Margaret Murray	Julius Arnold	07.01.78	09.02.79

Father	Mother	Child	Born	Baptized
Thomas Scott	Isabella Maitland	George	19.03.77	02.09.77
George Stokes	Mary McBray	Mary Isabella	01.03.75	02.09.77
Charles Wilson	Eliz. Mandeville	Francis Peter	31.03.76	07.08.80
Charles Wilson	Eliz. Mandeville	Wm. Cameron	22.12.78	
James Murray	Sarah A. Chesney	Wm. James	17.10.79	08.08.80
Harvey Arnold	Margaret Murray	Wm. Henry	23.05.79	
Thomas Scott	Isabella Maitland	Thos. Alexander	08.10.79	
Alexander Scott	Mary Lorimer	Bertha	06.11.80	18.09.81
Thomas Ludlow	Helen J. McMoran	Jas. Bendrick	31.05.81	
John Grant	Margaret McKellar	Jessie Maude	31.01.81	
James Haddle	Mary Ann Shewan	Margaret Maria	03.10.81	02.10.81
Marmaduke Pretty	Amelia Kendall	Jonathan Eddy	12.12.81	16.04.82
William Clubb	Harriet E. Nicol	Francis Alex.	23.12.81	
William Smith	Betsy Simpson	Wm. Mowat	24.04.82	11.07.82
James Murray	Sarah A. Chesney	David	23.10.82	25.02.83
Alexander Scott	Mary Lorimer	Alexander	27.05.83	22.07.83
Alexander Scott	Mary Lorimer	Francis	27.05.83	
Wm. Davidson	Mary J. Ludlow	Frederic Geo.	22.06.79	30.08.79
Harvey Arnold	Margaret Murray	Robert	12.11.82	07.09.84
William Clubb	Harriet Nicol	John Reid	20.11.83	
William Davidson	Mary J. Ludlow	Alice Luella	29.06.84	
George McMoran	Allison Laidlaw	Allison Brown	10.10.83	06.09.84
Thomas Scott	Isabella Maitland	Jessie Agnes	24.12.83	
Peter Grant	Mary McBean	Caroline	10.09.84	01.03.85
Alexander Scott	Mary Lorimer	William	13.05.85	13.09.85
James Murray	Sarah A. Chesney	Thos. Fred.	21.08.84	
William Smith	Betsy Simpson	John Robert	30.05.85	12.09.85
Marmaduke Pretty	Amelia Kendall	James Russel	28.03.85	05.09.86
Wm. Davidson	Mary J. Ludlow	William Roy	18.07.86	
William Clubb	Harriet Nicol	Wm. Henry	13.12.85	03.04.87
Alexander Scott	Mary Lorimer	John Laird	29.10.84	15.01.88
James Murray	Sarah Chesney	Sarah	12.10.86	
James Heddle, Jr.	Mary Campbell	Annie Mary	11.01.88	29.07.88
Thomas Laidlaw	Helen McMoran	George McM.	24.07.88	23.08.88
William Clubb	Narriet Nicol	Anne Cruikshank	09.04.89	23.02.89
Wm. Davidson	Mary J. Ludlow	Annie Mabel	02.06.89	28.07.89
Alexander Scott	Mary Lorimer	Nellie	06.03.90	06.08.90
William Clubb	Harriet Nicol	Margaret Jane	02.04.90	
James Murray	Sarah Chesney	Maude	26.07.89	20.07.90
Marmaduke Pretty	Amelia Kendall	Clara Pearl	27.08.90	30.11.90
Peter McKellar	Isabella Pretty	John	02.02.89	18.12.90
Peter McKellar	Isabella Pretty	Elizabeth	21.03.90	
James Heddle Jr.	Mary Campbell	Helen Flett	01.02.90	11.01.91
Donald McGregor	Emily Hayward	Janet Catherine	04.11.87	26.06.91
Donald McGregor	Emily Hayward	Sarah Emily	28.01.90	
William Esselment	Elizabeth Misner	James	20.09.80	16.10.91
Wm. Esselment	Elizabeth Misner	John	15.04.83	
Wm. Esselment	Elizabeth Misner	Archibald	27.08.89	
Wm. Esselment	Elizabeth Misner	Annie	27.08.89	
Peter McKellar	Isabella McKellar	Christina M.	28.05.92	10.08.92
Peter McKellar	Isabella McKellar	Herbert James	28.05.92	
James Campbell	Mary Ann Mason	James Wm.	08.09.92	30.12.92
James Heddle	Mary Campbell	Chas. Campbell	16.08.92	30.12.92
Donald McGregor	Emily Hayward	Joseph	18.12.91	24.06.93
John G. Wilson	Violet Grieve	James	18.11.92	
William Clubb	Harriet Nicol	James	18.11.92	

Father	Mother	Child	Born	Baptized
Samuel Harkness	Catherine McLennan	Gordon	20.01.94	23.06.94
Peter McKellar	Isabella Pretty	Annie Bell	20.06.93	02.08.93
James Campbell	Mary Ann Mason	Ann	24.12.93	23.06.94
Donald McGregor	Emily Hayward	Isabella	26.02.94	29.06.95
Donald McGregor	Emily Hayward	Wilford W.	01.05.96	15.10.99
Donald McGregor	Emily Hayward	Donald B.	30.08.98	
Francis Pretty	Jessie Miller	Francis L.	02.11.99	26.11.99
James Emery	Elsie Hagen	James Earl	29.11.00	03.04.01
John Young	Martha Pretty	Janet Amelia	09.03.99	03.01.02
F.C. Pretty	Jessie M. Miller	Ralph Kendall	02.07.01	28.07.01
Donald McGregor	Emily Hayward	Ralf M.	30.03.01	02.05.02
Walter C. Firman	Sarah M. Stevens	Evelyn Floretta	12.07.81	22.10.03
Walter C. Firman	Sarah M. Stevens	Lisette E.	31.10.89	
Montague Hannay	Evelyn F. Firman	Ethel Frances	17.08.03	
John Young	Martha Pretty	Annie	20.07.02	31.07.04
John Young	Martha Pretty	James Russell	25.02.04	
F.C. Pretty	Jessie Miller	Wilbert Robert	02.11.03	
Charles F. Firman	Adelaide Davis	Charles Walter	14.03.104	
George Dawson	Elizabeth Edward	Anna C. Jane	25.10.88	31.08.04
Wm. Sullivan	Jane McCreedy	Annie King	15.04.85	
George Dawson	Elizabeth Edward	John	10.12.96	
George Dawson	Eliz. Edward	Ellen Irene	02.04.02	31.08.04
Robert Mason	Margaret Cole	Florence P.	16.08.03	28.08.04
John Shepherd	Mary McVicar	Barbara Blossom	21.07.97	04.09.04
-----	Mary S. Pretty	Lucy Vera Pretty	08.12.00	21.04.05
James Emery	Elsie Hagan	Hazel Isabel	03.03.05	22.07.05
-----	Amelia	Lyell Bell	09.07.04	23.07.05
Peter W. Scott	Kate Allen	Georgena Allen	14.03.06	06.05.06
Alwin Bramley	Nellie Grieve	William	04.05.06	29.08.06
A. McGregor	Alice Davidson	Janet Viola L.	30.09.05	11.01.07
James Emery	Elsie Hagan	Margaret Fern	21.06.06	31.12.07
Robert Mason	Margaret Cole	Eldon Edmon	16.06.06	31.03.07
Frank Pretty	Jessie Miller	Jessie Edith	05.09.08	06.08.09
Wm. G. McBean	Mary Walton	Eleanor Walton	10.09.90	03.10.09
William Toles	Eliza Parr	Frederick	28.11.85	23.01.10
James Blackman	Mary Pretty	Lewis	14.10.09	27.03.10
William Scott	Christina Farr	Emily Olive		22.05.10
John Shepherd	Mary McVicar	Maria	29.12.07	14.04.11
John Shepherd	Mary McVicar	Marjorie Jane	08.02.10.	
John W. Young	Martha Pretty	Margaret K.P.	12.04.10	
		Bertha Irene		24.05.11
James Emery	Elsie Hagan	Ida Nilene	31.07.09	21.05.11
James Emery	Elsie Hagan	Leslie Alexander	25.03.11	
John Grieve	Elizabeth Scott	Frederick Edward	31.05.91	08.09.10
Frank Pretty	Jessie Miller	George Miller	15.09.11	22.10.11
John R. Smith	Beryl Toles	Mabel Jean	15.05.11	
James Grant	Annie Heddle	Donald Cameron	11.09.16	29.10.16
Harry Hayward	Annie McKellar	Muriel Jean	08.07.16	
Frank Pretty	Jessie Miller	Martha Isabella	23.08.06	11.01.07
Fred Mason	Mary Lester	Lili May	11.08.06	07.01.17
James Stubbs		Edna		03.06.17
William Scott	Christina Farr	Norah		03.07.17
Peter McKellar	Isabella Pretty	Peter		03.06.17
Russell Pretty	Frances Johnson	Amelia Eliz.		17.11.??
John Preece		Bruce		??.11.17

Father	Mother	Child	Born	Baptized
Frank Pretty	Jessie Miller	Orton Duncan	28.12.16	??.06.17
John R. Smith	Beryl Toles	Hazel Maude	31.03.15	
John R. Smith	Beryl Toles	Mildred Annie	12.09.16	
John R. Smith	Beryl Toles	Gordon Claire	13.04.18	
James Campbell	Mary Ann Mason	Charles Alex.		
James Grant	Annie Heddle	Mary		
James Grant	Annie Heddle	Harold		??.06.21
Francis LeConte	M.J. Clubb	Jean Margaret	06.10.21	09.07.22
Francis LeConte	M.J. Clubb	Ross Arthur	04.04.19	
Frederick J. Edwards	Mary E.	Gordon Earl	20.10.23	28.06.24
Fred. James Edwards	Bucke	Melvin Frederic	23.12.14	
John James Dixon	Sarah Marguerite Pelkie	Jean Marguerite	15.12.22	18.12.24
John James Dixon	S.M. Pelkie	Mary Elizabeth	04.03.24	
John Smith	Beryl Toles	Edna Beryl	20.12.19	28.12.24

Renfrew County Surrogate Court Index 1858-1900 Part II

By June Gibson

A workable index to the wills of Renfrew County did not exist; therefore the wills have been listed from the dockets as they appear on the microfilms. An alphabetical index shows name, township of residence, the number of the instrument, the date of probate and the reference to the self-serve microfilm reel in the Reading Room of the Archives of Ontario.

LIBBY, Matthew, Stafford, #500, 1892
LIEBECK, Martin, Wilberforce, #260, 1887
LINDSAY, William, White Lake, #210, 1884
LISTER, Frederick Amos Wainwright, Renfrew, #926, 1900
LIVINGSTON, Neil, Grattan, #406, 1891
LIVINGSTONE, Neil, Bromley, #879, 1899
LOGAN, Joseph, Renfrew, #811, 1898
LONGTON, Joseph, Cache Bay, #568, 1893
LOVE, James, Renfrew, #170, 1882
LOW, Alexander George, Pembroke, #363, 1890
LUBITZ, Christian, Alice, #131, 1879
LULOFF, Ferdinand, Wilberforce, #693, 1895
LYE, Mary, Westmeath, #553, 1893
LYLE, James, Eganville, #703, 1896
LYNN, Mary, Pembroke, #189, 1883
LYON, Patrick, Big Chute Depot Mississippi River Ontario, #128, 1879
LYONS, Mary Ann, Wilberforce, #652, 1895
MacCORMAN, Rev James, Brudenell, #721, 1896
MACKAY, Edward, Renfrew, #727, 1896
MACKIE, Eliza, McNab, #642, 1895
MADIGAN, Patrick, Brougham, #8, 1867
MADIGAN, Simon, Bromley, #367, 1890
MAHEN, Alexander, Pembroke, #221, 1885
MAHER, James Leonard, Grattan, #890, 1899
MALLON, John Keever, Pembroke, #758, 1897
MALONEY, Patrick, Brougham, #757, 1897
MALONEY, Patrick, Wilberforce, #777, 1897
MANGAN, Patrick, McNab, #828, 1898
MARCOTTE, Eli, Westmeath, #386, 1890
MARION, Cyriac the elder, Westmeath, #456, 1892
MARION, Peter, Pembroke, #372, 1890
MARTIN, Angelique, Pembroke, #574, 1893
MARTIN, John, Horton, #285, 1888
MARTIN, Thomas, Arnprior, #399, 1891

MASSON, Ola, Ross, #311, 1888
 MATHIEU, Francois, Pembroke, #469, 1892
 MAY, Sarah Ann, Sudbury, #317, 1889
 MAYHEW, Charles, Westmeath, #655, 1895
 MAYHEW, Joseph, Horton, #678, 1895
 MEAGER, William the elder, Pembroke, #585, 1894
 MELCHER, Martin, Wilberforce, #746, 1896
 MENZIES, Robert the elder, Westmeath, #504, 1892
 MERRICK, Eliza Jane, Pembroke, #532, 1893
 MICHEL, Gustave, Petewawa, #825, 1898
 MILLAR, James the elder, Pembroke, #632, 1895
 MILLAR, Janet Small, Pembroke, #241, 1886
 MILLER, John, Horton, #165, 1882
 MILLS, Alexander, Westmeath, #7, 1867
 MILLS, Angelina Ophelia, Renfrew, #184, 1883
 MINARD, Thomas, Grattan, #766, 1897
 MITCHELL, George, Pembroke, #674, 1895
 MITCHELL, William the elder, Grattan, #772, 1897
 MOFFATT, Alexander Fitzroy, Pembroke, #906, 1900
 MOFFAT, Isabella Ambrose, Pembroke, #628, 1894
 MOFFATT, Alexander Sr, Pembroke, #105, 1877
 MOFFATT, Charles, Arnprior, #28, 1870
 MOFFATT, James Purvis, Pembroke, #39, 1871
 MOHNS, John, Petawawa, #741, 1896
 MOHR, Ephraim, Arnprior, #613, 1894
 MONTGOMERY, Margaret, Westmeath, #203, 1884
 MONTGOMERY, Robert, Grattan, #73, 1874
 MOOR, John, Rolph, #413, 1891
 MOORE, Elizabeth Black, Bromley, #646, 1895
 MOORE, Stephen, Ross, #633, 1894
 MOORE, William, Westmeath, #155, 1881
 MORAN, John, Renfrew, #577, 1894
 MORRIS, James, Pembroke, #389, 1890
 MORRISON, Mary Ann, Pembroke, #394, 1890
 MORROW, John, Grattan, #157, 1881
 MORROW, John, Grattan, #158, 1881
 MORTON, John, Cobden, #6, 1867
 MULDENHAUER, Wilhelm Frederick, Admaston, #590, 1894
 MULLIGAN, Bridget the elder, #752, 1896
 MULLIGAN, Mary Agnes, Bromley, #886, 1899
 MULLINS, John, Horton, #719, 1896
 MULVEY, Michael, Pembroke, #231, 1885
 MULVIHILL, Daniel R, Brougham, #318, 1889
 MULVIHILL, Michael, Brougham, #266, 1887
 MULVIHILL, Michael, Admaston, #731, 1896
 MUNRO, Peter Pearson, Pembroke, #437, 1891
 MUNROE, Donald, Pembroke, #582, 1894
 MURACH, John, Radcliffe, #791, 1897

MURDOCH, James, Ross, #503, 1892
MURPHY, Catherine, McNab, #812, 1898
MURPHY, George, Pembroke, #80, 1875
MURPHY, James, Spokane Falls Washington Territory, #487, 1892
MURPHY, Patrick, Brougham, #869, 1899
MURRAY, William, Pembroke, #841, 1898
McADAM, James, Renfrew, #62, 1873
McADAM, Johanna Emma, McNab, #742, 1896
McADAM, Mary, Pembroke, #419, 1891
McADAM, William, Pembroke, #228, 1885
McANEELY, Catherine, Bagot, #159, 1881
McARTHUR, James, Horton, #65, 1873
McAULEY, Michael H, Allumette Island Quebec, #859, 1899
McCABE, Edward, Griffith, #132, 1879
McCALLUM, Duncan, McNab, #296, 1888
McCALLUM, John, Renfrew, #247, 1886
McCANN, Lawrence, Eganville, #602, 1894
McCARTHY, Jeremiah, Buchanan, #561, 1893
McCARTHY, John, Admaston, #422, 1891
McCARTHY, Patrick, Admaston, #751, 1896
McCLENNAN, John, Wilberforce, #107, 1877
McCONNELL, Benjamin, Pembroke, #41, 1872
McCONNELL, Catherine, Morden Manitoba, #858, 1899
McCONNELL, Rinaldo, Nipissing District, #154, 1881
McCOOL, Alexander Columb, Mattawa, #447, 1891
McCOOL, Mary Stack, Petawawa, #538, 1893
McCORMICK, Anthony Joseph, Sudbury, #438, 1891
McCORMICK, Catherine, Chicago Illinois, #883, 1899
McCORMICK, James, McNab, #286, 1888
McCOSHAM, Donald, Masson Quebec, #908, 1900
McCOSHAM, Grace, Pembroke, #173 and #176, 1882
McCOURT, James, Wilberforce, #786, 1897
McCOY, Margaret Ann, Alice, #742, 1896
McCOY, Robert, Alice, #440, 1891
McCRACKEN, Thomas, Westmeath, #787, 1897
McCREA, Edward, Bagot, #120, 1879
McCREARY, James, McNab, #151, 1881
McCULLOCH, George, McLellan North Dakota, #775, 1897
McDIARMID, James, Arnprior, #794, 1897
McDONALD, Alexander, Pembroke, #700, 1896
McDONALD, Ann, Horton, #638, 1895
McDONALD, Anne, Ross, #453, 1891
McDONALD, John, Arnprior, #206, 1884
McDONALD, Robert, Arnprior, #217, 1885
McDONALD, Ronald, McNab, #525, 1893
McDONALD, William, Renfrew, #494, 1892
McDONELL, Janet, Sand Point, #716, 1896
McDONOUGH, Michael, Westmeath, #172, 1882

McDOUGALL, Catherine, Renfrew, #524, 1893
 McGRATH, Jane Hynes, Allumette Island Quebec, #647, 1895
 McGREGOR, Margaret, Ross, #1, 1867
 McFARLANE, John, Bagot, #312, 1889
 McFEETORS, Samuel the elder, Ross, #316, 1889
 McINNIS, John, Renfrew, #94, 1877
 McINTYRE, Catherine, Horton, #181, 1883
 McINTYRE, Duncan, Horton, #726, 1896
 McINTYRE, Elizabeth Buchan, White Lake, #307, 1889
 McINTYRE, Gregor, Horton, #185, 1883
 McINTYRE, Henry, Admaston, #20, 1869
 McINTYRE, John, McNab, #56, 1872
 McINTYRE, John, Renfrew, #666, 1895
 McINTYRE, Margaret, Bromley, #724, 1896
 McINTYRE, Mary, McNab, #282, 1888
 McINTYRE, Nancy Smith, Head, #831, 1898
 McINTYRE, Samuel, Bromley, #846, 1898
 McKAY, James the elder, McNab, #325, 1889
 McKIBBON, Henry, Wilberforce, #71, 1874
 McKIBBON, Isiah, Wilberforce, #860, 1899
 McKIBBON, Louisa, Wilberforce, #929, 1900
 McKIBBON, Robert, Wilberforce, #423, 1891
 McKILLOP, Archibald, Westmeath, #478, 1892
 McKILLOP, John, McKim, #502, 1892
 McKINLEY, Peter, Wilberforce, #912, 1900
 McLEAN, Elijah, Bois Franc Quebec, #588, 1894
 McLEAN, Mary, Renfrew, #925, 1900
 McLELLAN, John, Ross, #865, 1899
 McLELLAN, John the elder, Ross, #215, 1884
 McLELLAN, Rebecca, Arnprior, #817, 1898
 McLEOD, Malcolm John, Maria, #147, 1881
 McLACHLIN, Alexander, Arnprior, #529, 1893
 McLACHLIN, Daniel, Arnprior, #48, 1872
 McLACHLIN, Daniel, Arnprior, #102, 1877
 McLACHLIN, Hugh R, Arnprior, #537, 1893
 McLACHLIN, James, McNab, #863, 1899
 McLACHLIN, John Harrington, Arnprior, #101, 1877
 McLACHLIN, Maria, Arnprior, #798, 1897
 McLAREN, William, Bromley, #233, 1885
 McLAREN, William, Renfrew, #418, 1891
 McLAREN, William, Westmeath, #572, 1893
 McLAUGHLIN, Robert, Westmeath, #255, 1886
 McLAUGHLIN, Samuel, Ross, #667, 1895
 McMAHON, James, Arnprior, #402, 1891
 McMAHON, Maurice, Admaston, #548, 1893
 McMANUS, Denis John, McNab, #601, 1894
 McMARTIN, Ann Jane, Renfrew, #488, 1892
 McNAB, Ann, Horton, #555, 1893

McNAB, Alexander Dougald, Douglas, (follows #715), #701, 1896
 McNAB, Allan, Renfrew, #760, 1897
 McNAB, Archibald, McNab, #303, 1888
 McNAB, Isabella, McNab, #50, 1872
 McNAB, Mary, McNab, #30, 1870
 McNAMARA, Catherine, Arnprior, #583, 1894
 McNAMARA, Denis, Arnprior, #481, 1892
 McNEE, Alexander, Bagot, #100, 1877
 McNEE, James, Arnprior, #739, 1896
 McNIECE, Thomas, Eganville, #66, 1874
 McNIEL, Catherine, Alice, #175, 1882
 McNEIL, James, Alice, #276, 1887
 McNEIL, Robert, Alice, #295, 1888
 McNEILY, Patrick, Bagot, #538, 1893
 McNULTY, Anthony, Admaston, #676, 1895
 McNULTY, Dominick, Brudenell, #258, 1887
 McNULTY, Martin, Brougham, #614, 1894
 McNULTY, Martin, Bromley, #720, 1896
 McNULTY, Patrick, Admaston, #168, 1882
 McPHEE, John, Arnprior, #333, 1889
 McPHERSON, William, Arnprior, #838, 1898
 McQUAID, Ann, Ross, #630, 1894
 McQUITTY, David, Horton, #449, 1891
 McQUITTY, William, Horton, #97, 1877
 McRAE, Donald, McNab, #734, 1896
 McRAE, John, McNab, #196, 1883
 McWADE, John, Ross, #706, 1896
 McWILLIAMS, James, Shamrock, #79, 1875
 NAISMITH, Lawrence, Pembroke, #34, 1871
 NEIL, Francis, Ross, #904, 1900
 NEVERS, Charles, Renfrew, #898, 1900
 NEVILL, Mary Clancy, Ross, #263, 1887
 NEW, Joseph, Horton, #754, 1897
 NOLAN, Martha, Admaston, #483, 1892
 NOLAN, Peter, Admaston, #16, 1867
 O'BRIEN, Janet, Westmeath, #690, 1895
 O'BRIEN, Michael, Brudenell, #788, 1897
 O'BRIEN, Michael Joseph, Pembroke, #351, 1890
 O'BRIEN, Morgan, Rolph, #153, 1881
 O'BRIEN, Patrick, Petawawa, #22, 1869
 O'CONNOR, William, McNab, #563, 1893
 O'DONOVAN, Thomas the elder, Eganville, #773, 1897
 O'DRISCOLL, Michael, Pembroke, #650, 1895
 O'GRADY, John, Hagarty, #866, 1899
 O'HANLEY, David, Admaston, #622, 1894
 O'KELLY, Christopher, Pembroke, #688, 1895
 O'KELLY, Dudley, Pembroke, #747, 1896
 O'LEARY, Michael, Alice, #163, 1882

O'MEARA, Michael, Pembroke, #135, 1880
 O'NEILL, Catherine, Renfrew, #139, 1880
 O'NEIL, Catherine, Pembroke, #321, 1889
 O'NEILL, William, Wilberforce, #409, 1891
 PATTERSON, Charles, Westmeath, #330, 1889
 PATTERSON, James, McNab, #364, 1890
 PATTERSON, Samuel, Eganville, #46, 1872
 PATZELE, Herman, McNab, #104, 1877
 PAUL, James, North Algoma, #597, 1894
 PAYETTE, Delphine, Brudenell, #534, 1893
 PEACHEY, William, Arnprior, #735, 1896
 PEEVER, William, Horton, #167, 1882
 PELL, Albany, Brudenell, #177, 1883
 PERCIVAL, James, McNab, #22, 1869
 PERKINSON, James, Sturgeon Falls, 390, 1890
 PHELAN, John, Alice, #297, 1888
 PHELION, Joseph, Admaston, #919, 1900
 PHILLIPS, David, Horton, #920, 1900
 PHILLIPS, John, McNab, #182, 1883
 PICHE, Joseph, Pembroke, #141, 1880
 PICKENS, Samuel, Admaston, #664, 1895
 PINKERTON, Robert, McNab, #342, 1889
 PIRIE, George, Pembroke, #797, 1897
 PLAUNT, Xavier, Renfrew, #370, 1890
 POFF, John, Stafford, #476, 1892
 POPKAY, Christian, Arnprior, #420, 1891
 POTTER, John, Admaston, #113, 1878
 POTTER, Robert, Renfrew, #171, 1882
 POWER, James, Admaston, #729, 1896
 POWER, Michael, Admaston, #617, 1894
 PRANKE, August, Petawawa, #426, 1891
 PRENTICE, Thomas John Gillespie, McNab, #600, 1894
 PRETTY, John the elder, Westmeath, #465, 1892
 PRETTY, Mary Ann, Westmeath, #801, 1897
 PRICE, David, Horton, #893, 1899
 PRICE, Thomas, Arnprior, #493, 1892
 PURVIS, Andrew Sr, Stafford, #759, 1897
 QUINN, Patrick, Clarendon, #85, 1876
 RALLINSHAW, Joseph William, Stafford, #611, 1894
 RAMSAY, Daniel, Mansfield, #897, 1900
 RATTRAY, James Charles, Cobden, #687, 1895
 RATTRAY, Peter Miller, Pembroke, #369, 1890
 REED, Joseph L, Brighton Michigan, #237, 1886
 REKOSKI, Vincent, Horton, #243, 1886
 REID, Ephraim, Admaston, #287, 1888
 REID, James, Radcliffe, #625, 1894
 REYNOLDS, James Patrick, Bromley, #799, 1897
 REYNOLDS, John, Ross, #284, 1888

RIDDELL, Archibald, Arnprior, #354, 1890
 RING, Edmund, Brudenell, #707, 1895
 RISKE, Wilhelm, Sebastopol, #657, 1895
 RITCHIE, William Dickson, Head, #557, 1893
 ROACH, William, Ross, #253, 1886
 ROBERTS, Samuel, Westmeath, #922, 1900
 ROBERTSON, Alexander, Westmeath, #649, 1895
 ROBERTSON, Barbara, McNab, #329, 1889
 ROBERTSON, Catherine, McNab, #244, 1886
 ROBERTSON, Jane, Pembroke, #816, 1898
 ROBERTSON, Neil, McNab, #126, 1879
 ROBINSON, Walter Brownlie, Widdifield, #510, 1892
 ROBITAILLE, Joseph, Grattan, #768, 1897
 ROMAN, Joseph, Pembroke, #2, 1867
 RORISON, James, Arnprior, #415, 1891
 ROSS, Catherine, Renfrew, #523, 1893
 ROSS, Helen, Renfrew, #403, 1891
 ROSS, John, Westmeath, #660, 1895
 ROSS, William, Ross, #867, 1899
 ROTHSCHILD, Rebecca, Mattawa, #466, 1892
 ROUGIER, Paul, Horton, #551, 1893
 ROULEAU, Louis, Widdifield, #320, 1889
 ROWAN, Esther, Pembroke, #711, 1896
 ROWAN, James, Stafford, #814, 1898
 ROWE, Thomas, Arnprior, #417, 1891
 ROY, Jean Baptiste, Sturgeon Falls, #573, 1893
 ROY, Omer, Sudbury, #604, 1894
 RUNDLE, Henry, Pembroke, #136, 1880
 RUSSELL, Alexander, Renfrew, #839, 1898
 RUSSELL, James, Horton, #663, 1895
 RUSSELL, Martin Luther, Renfrew, #809, 1898
 RUSSELL, Mary, McNab, #820, 1898
 RYAN, Jeremiah, Bromley, #530, 1893
 RYAN, Margaret, Pembroke, #847, 1898
 RYAN, Patrick the younger, Pembroke, #852, 1898
 RYAN, Stephen, Bromley, #302, 1888
 SAAR, Aaron, Stafford, #923, 1900
 SADLER, Thomas L, Pembroke, #895, 1900
 SAMMON, Michael, Bromley, #220, 1885
 SARGENT, John Louis, Arnprior, #783, 1897
 SCHEEL, Louisa, Arnprior, #648, 1895
 SCHELKE, Charles, Wilberforce, #509, 1892
 SCHEPYEAR, Michael, Hagarty, #103, 1877
 SCHOLLARD, John, Bagot, #542, 1893
 SCHONNOP, Martin, Wilberforce, #835, 1898
 SCHROEDER, Albert Gustave, Pembroke, #658, 1895
 SERSON, William the elder, Grattan, #408, 1891
 SHALLOE, Rev Michael, Sheen Quebec, #680, 1895

SHEEDY, Martin, Bromley, #914, 1900
 SHEEDY, Michael the elder, Bromley, #278, 1887
 SHEEDY, Patrick, Bromley, #134, 1880
 SHEEHAN, Patrick, Ross, #903, 1900
 SHEPPARD, Caleb, Arnprior, #373, 1890
 SHEPHERD, David the younger, Pembroke, #910, 1900
 SHEPPARD, Lydia Anne, Arnprior, #368, 1890
 SHERIDAN, Thomas, Wilberforce, #864, 1899
 SHERMAN, Henry, Pembroke, #842, 1898
 SHIELDS, Daniel, Pembroke, #197, 1883
 SHIELDS, Henry, Horton, #91, 1877
 SHIELDS, Hugh, Westmeath, #567, 1893
 SHIELDS, Michael, Bromley, #694, 1895
 SIMARD, Joseph, Renfrew, #152, 1881
 SIMPSON, Rev John Henry, Arnprior, #581, 1894
 SINTON, Henry, Cobden, #905, 1900
 SKELLY, John, Admaston, #186, 1883
 SLACK, James Wright, Pembroke, #54, 1872
 SLATER, William Stewart, Arnprior, #821, 1898
 SLATTERY, Harriet, Pembroke, #656, 1895
 SLATTERY, Michael, Deux Rivieres, #862, 1899
 SLATTERY, Patrick, Pembroke, #380, 1890
 SMALLFIELD, Amy Eden, Renfrew, #714, 1896
 SMALLPIECE, Thomas, Brudenell, #84, 1876
 SMITH, Arthur Albert, Westmeath, #917, 1900
 SMITH, David, Pembroke, #178, 1883
 SMITH, Ellen, Bromley, #428, 1891
 SMITH, John, Westmeath, #840, 1898
 SMITH, Mary Ann, Renfrew, #279, 1887
 SMITH, Philander P, Horton, #911, 1900
 SMITH, Terence Milo, Mattawa, #187, 1883
 SMITH, William H, Mattawa, #350, 1890
 SMYTH, John, Arnprior, #636, 1894
 SPENCE, William, Arnprior, #385, 1890
 STEELE, Nancy Gray, Cobden, #776, 1897
 STEVENS, George, Arnprior, #629, 1894
 STEWART, Agnes, McNab, #238, 1886
 STEWART, Archibald, McNab, #268, 1886
 STEWART, Archibald, McNab, #675, 1895
 STEWART, Archibald Campbell, McNab, #900, 1900
 STEWART, Donald, Admaston, #9, 1867
 STEWART, George, Sudbury, #348, 1890
 STEWART, James, Douglas, #695, 1896
 STEWART, Jane, McNab, #145, 1880
 STEWART, John R, Renfrew, #265, 1887
 STEWART, Marion Gilchrist, McNab, #685, 1895
 STEWART, Thomas, Arnprior, #51, 1872
 STOPPA, John, Sherwood, #472, 1892

STOREY, Sarah, Pembroke, #651, 1895
 STORIE, James, McNab, #81, 1875
 STORIE, John, McNab, #774, 1897
 STORIE, Thomas, Amprior, #109, 1878
 STOUGHTON, William, Bagot, #595, 1894
 SULLIVAN, John, McNab, #252, 1886
 SULLIVAN, Joseph, Westmeath, #485, 1892
 SULLIVAN, Thomas, Westmeath, #764, 1897
 SULLIVAN, Timothy, Pembroke, #486, 1892
 SUNSTRUM, John, Renfrew, #127, 1879
 SUPPLE, Esther, Pembroke, #421, 1891
 SUPPLE, John, Pembroke, #63, 1873
 SUPPLE, John the younger, Pembroke, #32, 1870
 SURTEES, Alice, Beachburgh, #202, 1884
 SUTHERLAND, John, McNab, #96, 1877
 SUTLIFF, Thomas, Horton, #270, 1887
 SWITZER, Joseph, Westmeath, #82, 1875
 TAGGART, George, Mattawa, #192, 1883
 TAGGART, Robert Albert, Mattawa, #293, 1888
 TAIT, Samuel, Admaston, #195, 1883
 TANG, Eliza, Bonfield, #550, 1893
 TANNER, George Burton, Pembroke, #885, 1899
 TAYLOR, Andrew, McNab, #123, 1879
 TAYLOR, Maude, Chapleau, #349, 1890
 TEMPLE, William, Grattan, #907, 1900
 THIBEAULT, Odilla, Widdifield, #452, 1891
 THOMPSON, Anne, Pembroke, #209, 1884
 THOMPSON, Philip, Bromley, #313, 1889
 THOMPSON, Richard, Clarendon, #790, 1897
 THOMPSON, Robert, Westmeath, #851, 1898
 THOMSON, Alexander, Ross, #479, 1892
 THOMSON, John Jr, Renfrew, #222, 1885
 THORPE, Samuel, Pembroke, #789, 1897
 TOUGH, Thomas Baird, Wilberforce, #527, 1893
 TIERNEY, Christopher, Bergen Point New Jersey, #436, 1891
 TIMMINS, Harriet, Mattawa, #627, 1894
 TIMMINS, Noah, Mattawa, #272, 1887
 TOMPKINS, George, Klock's Mills, #626, 1894
 TOURANGEAU, Godfroi, Longueil Quebec, #249, 1886
 TUCK, John the elder, Stafford, #559, 1893
 TUCK, Mary, Stafford, #309, 1889
 TUFFY, John, Douglas, #834, 1898
 TWOHEY, Michael, Grattan, #902, 1900
 TWOLAN, Thomas T, Bristol Quebec, #519, 1893
 VAUDRY, Paul, Stafford, #915, 1900
 VERDON, Basil, Pembroke, #691, 1895
 WALFORD, Mary, Renfrew, #248, 1886
 WALFORD, Stephen, Renfrew, #49, 1872

WALLACE, John, Renfrew, #540, 1893
 WALLACE, John, Horton, #584, 1894
 WALLACE, Thomas, Bromley, #308, 1889
 WALLACE, William the elder, Ross, #477, 1892
 WALLNITZ, Mary, Pembroke, #815, 1898
 WALSH, Ellen, Pembroke, #872, 1899
 WALSH, George, Ross, #619, 1894
 WARBRICK, John, Ross, #868, 1899
 WARE, Anthony, Wick Caithness Scotland, #212, 1884
 WARE, Anthony, Caithness Scotland, #269, 1885
 WARK, Sarah, Westmeath, #833, 1898
 WARREN, William James, Pembroke, #616, 1894
 WARREN, William Thomas, Sudbury, #569, 1893
 WATT, Thomas Lough, Renfrew, #88, 1876
 WEBER, Edward Frederick Ferdinand, Eganville, #501, 1892
 WETHERLY, Thomas, Arnprior, #887, 1899
 WHELAN, Charles Bates, Pembroke, #77, 1875
 WHITE, Andrew Thomson, Pembroke, #916, 1900
 WHITMORE, William, Westmeath, #720, 1896
 WHYTE, James, Arnprior, #74, 1874
 WIGELSWORTH, John, Westmeath, #29, 1870
 WIGNEY, Joseph, Bagot, #129, 1879
 WIGNEY, Samuel, Bagot, #112, 1878
 WILLIAMS, Daniel, Pembroke, #198, 1883
 WILSON, James, Buchanan, #800, 1897
 WILSON, Matthew, Admaston, #75, 1874
 WINDLE, Catherine, Bagot, #829, 1898
 WINDLE, John the elder, Bagot, #620, 1894
 WINDLE, John O, Bagot, #778, 1897
 WINTERS, Fletcher, Westmeath, #362, 1890
 WOODS, Russell, Cobden, #431, 1891
 WORRELL, Essex, Bonfield Nipissing, #300, 1888
 WORTHINGTON, John Charles, Mattawa, #328, 1889
 WRIGHT, Henry, Renfrew, #138, 1880
 WRIGHT, James the younger, Ross, #531, 1893
 WRIGHT, William, Pembroke, #395, 1890
 YEILDING, John, Sturgeon Falls Nipissing, #366, 1890
 YERATSKI, Joseph, Renfrew, #554, 1893
 YOUNG, Anna, Arnprior, #605, 1894
 YOUNG, Charles, Wylie, #169, 1882
 YOUNG, Francis, Shawville, #728, 1896
 YOUNG, James, McNab, #47, 1872
 YOUNG, Richard, Stafford, #219, 1885
 ZEBARTH, August, McNab, #753, 1896
 ZUMMACH, Carl, Hagarty, #770, 1897

IN SEARCH OF THE "FORLORN HOPE":

A Comprehensive Guide to Locating British Regiments And Their Records (1640-WWI)

by John M. Kitzmiller, II

The "Forlorn Hope" is a military term for a picked contingent of soldiers sent out as an advance picquet or scouts. This book is a guide for people who have a difficult time tracing their ancestors in the British Army. Usually in Army research, the major problem to overcome is determining the regimental number and name. Without these facts, it becomes almost impossible to access military records.

Using a combination of sources comprised of War Office records, original correspondence, a large number of Regimental histories, and works by noted military authors - an index has been compiled of battles, skirmishes, detachments, posts, etc. around the world and the regiments stationed there. This covers a period from 1640 to World War I *BY LOCATION* within specified time limits. Something of this scope has not been attempted before and in many respects is a condensed version of the War Office Station Returns.

INCLUDES THE FOLLOWING:

- How to find regimental names/numbers
- War Office (W.O.) records on microfilm
- List of garrisons, barracks, etc.
- List of Colonels of regiments 1600's-1881
- Genealogical table for each regiment
- List of disbanded regiments and dates
- Illustrations - maps, drawings, & photo's
- Double index by dates and locations
- Typical research problems & solutions

IN SEARCH OF THE "FORLORN HOPE" is approximately 1600 pages in a two volume set, hard bound, and has a dust jacket portraying "The Thin Red Line" (93rd Highlanders).

Angus Baxter, Renown Canadian Author* & Genealogist:

"It has been a long time since I have been so impressed as I am with this project. The only information in that whole area readily available has been very limited... until the writing of Mr. Kitzmiller's book". [*"In Search of Your British & Irish Roots; In Search of Your European Roots; & In Search of Your Roots (Canadian)]."

Michael Cane, honorable editor of The Journal for Army Historical Research (England):

"Absolutely splendid—will be extraordinarily useful. One would certainly welcome this book."

THE AUTHOR

John M. Kitzmiller, II is an Accredited Genealogist & Heraldist in English research with an emphasis on the British Military and Heraldry.

Mr. Kitzmiller is a Correspondence Specialist at the Genealogical Library in Salt Lake City, Utah for the following areas: British Military; Heraldry/Nobility/Royalty; Scotland; Northern Ireland; and the Austro-Hungarian Empire.

He is a member of the Heraldry Societies of London, Scotland, Ireland, and Canada; Society for Army Historical Research (England); the Military History Society of Ireland; the East Yorkshire Family History Society; and the Society of Genealogists (England).

SPECIAL PREPUBLICATION OPPORTUNITY!

Prepublished price: \$90 (Australia/Canada) plus \$7 postage and handling (\$115 after closing date)

CLOSING DATE: 16 December 1987, Publication Date: December 1987

To order, send cheque/postal order to: MANUSCRIPT PUBLISHING FOUNDATION
P.O. Box 2640 — Salt Lake City, UT 84110-2640

Please send me _____ copy/copies of THE "FORLORN HOPE". I enclose a cheque/postal order for _____ made payable to "MANUSCRIPT PUBLISHING FOUNDATION". Books will be shipped surface mail - if notification is required please include SASE.

NAME

ADDRESS:

POST CODE/ZIP CODE

COUNTRY

WHAT'S IN A NAME

A Queries Section by Elizabeth Hancocks, C.G.



AITKEN - LORIMER - PATERSON: Dr G A (Ken) Paterson, 24 King's Garden, Toronto, ONT M8X 1S6. I need to tap into the vast genealogical resource material that was stored in the brain of the late Jessie Lorimer, nee Aitken, wife of Douglas Lorimer, of Ancaster, ONT and Montreal - mother of four boys. Jessie was a cousin of my father Jesse George Paterson, D.D.S., both born Alliston, and of Max Aitken, Lord Beaverbrook.

ALEXANDER: Anne Fisher, 336 Arcola #7, Inkster, MI 48141 USA. William Alexander, s/o James & Jane, m Ellen Emerson. Had son William b c1868 Hungerford twp, Hastings Co, ONT. Would like to correspond with desc.

ARNOLD: Kathryn Arnold, 3289 Eagle Cres, Prince Albert, SASK S6V 7P9. Looking for anyone with the name Unity Arnold, d/o John Arnold and Mariah Barnes. Had twin sis named Love. They were b in Wellesley twp, Waterloo Co, ONT. Love married a Matthews and moved to Buffalo, NY. Where did Unity marry and live? She was at Linwood, ONT, for pa's funeral in 1872.

BLACK: Cathy McCrea, Box 26023, Fairview Park, OH 44126-1123 USA. I am looking for my long lost cousin Sylvia Black, d/o Kathleen Elliott, Her husband Murray worked as a pharmaceutical salesman. They have lived in Markham and Kitchener ONT.

BOOTHBY: W Dyer, 36 Loxford, Felmores, Basildon, ESSEX, ENG. Florence Mary Boothby b 1899, bp St Peters RC Church, Dormer Place, Leamington Spa, Warwickshire, England 23 Sept 1902. She went to Nazareth House, Rednal, Birmingham, 15 June 1909 with two sisters. She was d/o John Thomas Boothby and Amelia Winifred Butler. She emigrated to Ontario 1914 and worked for Robert C. Wilkins. Can anyone help me find her. She is my aunt.

BRADLEY: Richard Bradley, RR 1, Maxville, ONT K0C 1T0. Henry Bradley, husband of Susan Garrett of Co Carlou, IRE, came to Canada as a widower 1820, d 1821 CE, bd Seymour twp, Northumberland Co, ONT or Plantagenet twp, Prescott Co, ONT? Children: William; James; Henry; fourth son?; Margaret; Maria. Need burial place info, info on fourth son, and immigration ship.

CLARKE TOWNSHIP PIONEERS (Durham County): Mrs Helen Schmid, General Delivery, Orono, ONT L0B 1M0. Research for genealogical book in progress; pioneer families for all of township including villages of Orono, Newcastle, Newtonville, Port Granby, Kendal, Leskard, Kirby; much info gathered, need input from desc.

COCKERLINE: Calvin Cockerline, RR 2, Cochrane, ALTA T0L 0W0. Seeking any info (past or present) on this rare family surname. Will gladly correspond with anyone and share available data on hand concerning this and other related family surnames.

COOPER: Irene Nicolich, Rt 3, Box 1357, Hoquiam, WA 98550 USA. Thomas and Sarah Cooper from ENG. Poss lived Northumberland or Durham Co, ONT. Children: Elizabeth Jane m John Griffin, to Victoria Co c1863; Hannah; Thomas; Mary Ann m John Parkins/Perkins, to Laxton twp, Victoria Co, 1871; Jennie m a

Rutter; Kezia m Charles Bowins, in Laxton twp 1871; Joseph; Maria m a Lake. After Thomas Sr died Sarah m a Mr Campbell. Seek desc and info on all.

CORKUM - HIRTLE - MEISNER - SNYDER: Victoria Palen, 26 Rochester Rd, Carver, MA 02330 USA. Am searching for collateral and lineal desc of these families. Have over 20 loose-leaf binders of family groups, etc. Am willing to share info. Areas are Lunenburg Co, NS; Nova Scotia, PEI, and New Brunswick.

EARLY CANADIAN WRITERS: Carole Gerson, 911 West 22nd Ave, Vancouver, BC V5Z 2A2. Am researching English-Canadian women authors of fiction and poetry who were active before 1940, and would like to hear from anyone with biographical info that is not available in standard published sources. In particular, I am seeking papers or correspondence in private hands, and info being compiled by family researchers or local historical societies. If a woman in your family wrote a book of fiction or poetry in Canada before 1930, I would be grateful to hear from you.

DUNLOP - FORREST: Mrs Inez M Robinson, 16414-105A Avenue, Edmonton, ALTA T5P 0V7. William R Dunlop b 1837 SCOT, to Canada with prts Andrew Dunlop and Jean Reyburn, 1843, settled in Perth Co. William m 1857 Margaret Forrest b 1838 SCOT. Who were her prts? They had nine sons and two daus. Margaret d 1881, and William moved to Manitoba then to Saskatoon, SASK, where he died in 1924. Any info on these fams greatly appreciated.

DUNN - TURNBULL - CLOSE: Mrs Barbara Logan, 7480 Nootka St, Powell River, BC V8A 1K7. Wish to contact Mrs Helen (Wright) Dunn of Fredericton, NB in 1938, niece of Emma J Dunn (d 14 Sept 1951 at Bear River, NS). I am great gddau of Archibald Close Dunn and wish to correspond.

FEARNLy: Mrs. Barbara Monasch, 11464 - 75 A Ave, North Delta, BC V4C 1H7. Need the burial place of Thomas Fearnly d 16 Feb 1884 and Thomas Joseph Fearnly d 5 Aug 1881 poss in Toronto. Also need marriage date and place of George Fearnly and Ann (who) between July 1871 when his first wife died, and Dec 1872 when George died.

FLEMING - MASON: Mrs Inex M Robinson, 16414-105A Avenue, Edmonton, ALTA T5P 0V7. Thomas Fleming b 1814 IRE, came to Canada with his parents in 1824. James Fleming was his pa, who was his ma? They settled in Mono Mills, Simcoe Co, ONT. Thomas m 1830s Matilda Mason b 1818 (where), d/o Stewart and Ann (who). They later moved to Egremont twp, Grey Co. Thomas d 1874, Matilda moved with fam to Summerberry, SASK, where she d 1886. Any info on these fams appreciated.

GRAHAM: Mrs John D. Bacon, 216 E Reid Rd, Grand Blanc, MI 48439 USA. William T Graham m Georgina McKay, b 1843, d/o John & Rachel. (Ontario Co Marriage Register giver her pa as William; D/R gives above). Any info appreciated. Also on their son Charles b 1873, who taught school at St Mary's, Perth Co, and then disappeared.

GREENWOOD: A A Greenwood, RR 1, Box 440, Madrona Dr, Nanoose Bay, BC V0R 2R0. Ida Green-

wood married Douglas Walker of Edmonton, ALTA, c1911. Does anyone know where and when she died?
GOULD - MIDDLETON - FOSTER: Kevin W Long, 20 Felicity Dr, Scarborough, ONT M1H 1E3. Mary Ann Gould, d/o Jacob and Martha, b 1828 IRE, m Thomas Middleton, s/o Thomas & Mary, 1861 in King twp, York Co, ONT. Known children: David; Mary; Catherine; Eliza; Howard. Ann Gould, d/o Jacob & Martha, b 1845 IRE, m George Foster, s/o George & Christine, 1871 in King twp. Known children: Ettis Ann b 1873; George b 1875. Both fams lived in King twp til mid 1870s when believed to have moved to either northern ONT, or northern US. Seeking desc, any info appreciated.
HALL: John W Hall, 3680 W 8th Ave, #206, Vancouver, BC V6R 1Z1. James and Jane Hall (nee Breakey) both b IRE, poss married in Port Hope, ONT, 1835. Lived in Cavan twp, Durham Co, ONT, until 1867. Am trying to determine relationship to other Halls who lived in Cavan or elsewhere.

HALL - HUGHES - BRIGGS: D S Erkrantz, 7905 Eston Rd S, Clarkston, MI 48016 USA. Widow Harriet Hall Hughes b 1802 CAN, m Luman Phelps 1835 in Whitby twp, Ontario Co, ONT. Witnesses: William Briggs and Lewis Hall (Bro? b 1805) Need prts of Harriet.
HILLIS: Dave Johnson, 175 Locke St N, Hamilton, ONT L8R 3B1. James Hillis c1827-1883 m 1852 Jane McClure, lived E Garafraxa twp, Dufferin Co, ONT. Was he s/o James Hillis c1804-1880 of Toronto twp, Peel Co, and his first wife (name unknown)? James Sr m2 Mary Smeltzer.

HORTON - CORSELIUS - GOZORTE: Peggy Lindsay Dagg, 17446 Brady, Redford, MI 48240 USA. Seek desc of Samuel & Margaret (Corseilus) Horton. Samuel b c1768 NY or NJ m Margaret 27 Sept 1789 Frankford, NJ. To ONT c1794. Children: Susanna (m Abraham Youngs); Samuel; Margaret; Peter; four more. Need place and dates of death for each. Samuel m Catherine Gozorte 1824 in St Thomas, ONT. Children?
HOUCK - WINSLOW: Mrs John D. Milne, 57 Treadgold Cres, Don Mills, ONT M3A 1X1. Richard Houck, b Oct 1799 USA, d 24 June 1875, bd Harrington, ONT; m at Sophiasburgh, ONT, 13 Feb 1820 Laura Winslow, d/o Luther & Keziah (Cummings), b 31 Jan 1799, d 10 Sept 1885, bd Harrington, ONT. 1837 directory lived in Scarborough, ONT; 1847 lived Pickering-Markham town line. Keziah Winslow bd St Andrew's Bendale, Scarborough. Children: Henry; Eliza; John; Betsy; Maria; Laura; Lydia; Amanda m Robert Armstrong; George; Hiram Prentice m Jane Hosford. Would like to contact desc.

JESSIMANE: Lillian M Rook, 7219 Brookcrest Place, Annandale, VA 22003 USA. Peter Jessimane b 25 Dec 1859 (SCOT or ONT?), d 7 Dec 1930 Toronto, ONT, m Catherine Tudhope (when, where?) b c1862 Oro twp, d 11 June 1925 Toronto. Children: Christina Blanche Eleanor b c1888; Jennie Evelyn; Hazel b 1891. Need info on anc, contact desc.

JOHNSON: Roy Johnson, RR 1, Ridgeville, ONT LOS 1M0. Seeking any info re anc and desc of Henry Johnson c1744-1808 m1 Mary Morgan? Children: Rebecca 1763-1808 m 1785 Joseph Brown 1755-1821; Mary c1765-1815 m 1795 Andrew Templeton 1766-1834. Henry m2 Naomi Taylor, a widow (need maiden name) who had a son Edward Taylor 1769-1836 m 1801 Hannah Collard 1785-1853. Children of Henry & Naomi: Jeremiah 1772-1851 m 1792 Elizabeth Durham 1766-1852; Nathan 1772-1851 m 1798 Mary Dennis 1776-1860; John 1773-1857 m Susannah Stewart; George m Ann; Henry Jr 1780-1854 m Elizabeth Smith 1794-1854. Henry Sr m3 Naomi (Corwin) Hixon 1753-1825 and they had Joseph b

1795 m Elizabeth Petrie?

JOHNSTON: Cindy Johnstone, 3806 E 7th St, Superior, WI 54880 USA. Thomas Johnston Sr and Julia Walsh, both b IRE c1830, had their first child Thomas David Jr in Dundas, ONT c1863. He m Therese Bee Handley c1889. All info appreciated.

KINCARDINE TOWNSHIP PIONEERS: Wanita Fletcher, RR 4, Kincardine, ONT N2Z 2X5. Research for township history in progress: pioneer families for Kincardine twp and villages of Millarton, Bervie, Kingarf, Glamis, Armow, Inverhuron, Lorne, Stoney Island. Much info gathered but need input from desc. All letters will be answered. Need pictures, and info on anc and desc.

KING: Mrs John D Bacon, 216 E Reid Rd, Grand Blanc, MI 48439 USA. William King, b 1831, s/o Stephen & Ruth, m Sarah Graham, b 1832 m 21 Nov 1858 Markham, ONT, Sarah Graham, b 1832. Family picture shows three girls and one boy. Both bd Bloomington cem, York Co, ONT. Any info on fam appreciated.

LEDERACH: K Baker, 2170 Sherrobee Rd, #806, Mississauga, ONT L5A 3P8. Anna Lederach was the wife of the Rev Valentine Kratz, b 1754 Pennsylvania, d 1824 Lincoln Co, ONT, to Canada 1799. He was the first Mennonite Minister in Canada 1801. They had 10 children. Would like vital statistics for Anna and names and dates of her prts and her siblings.

LEFEBVRE/LEFEVER/BEAN: Theresa Olson, 10225 Mississippi Blvd, Coon Rapids, MN 55433 USA. Need info regarding birth of Mary Cordella Lefebvre/Lefever/Bean c1854, d/o Joseph & Sophie ? (need any info on her prts). She m Ls. Elzeur Bourgeois 20 Feb 1871 at St Anne, Manchester, NH. Witnesses: Eli Lefever and Celina Lamanash. She d 17 May 1926 Edmonton, ALTA (a resident of Legal, ALTA). Would like to correspond with all persons researching Bourgeois lines; male and female.

LEGARE/LEGARY - ELLISON: William D Amell, 412 London St, Peterborough, ONT K9H 3A2. Joseph Legare m 1817 Anne Ellison and lived Balderson, Bathurst twp, Lanark Co, ONT. Children: Mary m 1840 Francois Lalonde; Anne m 1851 Patrick Hughes; William m c1855 Sarah Crawford; James m 1856 Ellen Hughes; Margaret m 1858 Jean-B Dandurand alias John McPhee; Richard; Joseph m 1870 Rose Ann Hall, Henry m 1873 Marion McDonald. The fam just north of Balderson remained in the fam till 1900 when the surname faded from the district. Would like to correspond and compare notes on this ancestry.

LOGAN - CARMICHAEL: Barbara Logan, 7480 Nootka St, Powell River, BC V8A 1K7. James Carmichael Logan b 1860 m Jane (poss Cameron) c1884 in Nova Scotia; had son William Howard b 1886, and dau Ann b c1888. Moved to North Dakota, USA, and had children: Allan Cameron b 30 Mar 1890; James Stanley 1892; Tilley 1894. Moved to Enderby, BC, 1900s. He had two older sis and half bro Harry. Who were James's prts? Pa was said to have bro's who were sea captains.
MACKLEY: Irene Nicolich, Rt 3, Box 1357, Hoquaim, WA 98550 USA. John and Rebecca Mackley from ENG. Children: Hannah; William Cross; Ann; Rebecca, m Baptist (called Albert) Courtemanche. Poss Northumberland or Durham Co, ONT, c1837. Rebecca Jr lived Victoria Co after marriage. Seek desc and all info.

MAHER: Betty Maher, 3899 Green Valley Rd, Suisun City, CA 94585-1471 USA. William Maher b 18 Aug 1832 in Canada. Pa b IRE, ma b ENG (need names and places). Need name & vitals of 1st wife. Two daus were named in will dated 1898 - Mary Ann Runnels and Agnes Pinckley. He married 2nd Mary E Gardner

b 1838 in Maine (need date and place). Fam moved west in 1852. First child b 1862 Iowa, 2nd in WI, 3rd in IL 1869. 1870 were in MO where he lived until his death in 1903.

MC AUGHEY - CALDWELL: Mrs Mary Edith Wegener, 3181 Maple Rd, Newfane, NY 14108 USA. James and wife Elizabeth Caldwell may have moved from South Plantagenet twp, Prescott Co, ONT, after 1851, to Michigan. Will exchange info on family in Ontario.

MCCOL(E)MAN - GRAHAM - BELL: Alexander McColman b c1766, prob Killarow (Bowmaore) Islay, m 1795 Ann McEachern? Then c 1898 Mary Graham. Children b c1796-1814: Archibald m Catherine Ann Bell; Peter m Catherine Jamieson; John m Margaret; Alexander; Catherine m James Mair; Donald m Flora McAlpine; Mary m Archibald Hunt; Flora m John McDiarmid. Children emigrated 1830s or 1840s to Simcoe and Grey Counties. Desc later went to Manitoulin Island. Am interested in all connections of these families and in tracing the McColman surname.

MILLER - TAYLOR - BUCKBEE: J B Miller, 603 - 49th Ave SW, Calgary, ALTA T2S 1G6. Dr George Miller, 1778-1828 m Mary Bell 1781-1848 of Newry, IRE, and Niagara, ONT. Children: Barbara m Comer (son George Comer of Kingston); Robert B; Thomas (dau Lilla Goslin of Toronto); Alexander of Ancaster. Any desc? Judge Thomas & Eliza Bell Taylor of Hamilton - desc include E Buckbee of Hamilton. Any info appreciated.

PIERCE/PEIRCE: Brian Pierce, 190 Chalet Cres, London, ONT N6K 1C6. Would like to make contact with desc of any Pierces from "Pierces Corners" Marlborough twp, Carleton Co, ONT. I have will of John Pierce who died at Pierces Corners in 1851 leaving land to one son and four grandsons and three nephews. Will share info.

ROSS: Mrs Edith Davison, 32 Reay Street, Inverness, SCOT 1V2 3AL. Wish to contact person researching in Tain, Ross-shire, SCOT, burial place of Andrew Ross, stonemason, b 28 Jan 1858 at Ballintore, d 31 Jan 1936 at 14 Stafford St, Tain. First wife Mary Mackay d 6 Apr 1897, 32 years. Second wife Dolina Morrison bd Cromarty.

SHEARD: Mrs Mary Edith Wegener, 3181 Maple Rd, Newfane, NY 14108 USA. Charles Sheard b c1844 in Sherbrooke, QUE. Was in Parry Sound district c1890. Info needed on his family and where they lived. Will exchange info.

STEPHENS - LOVE - TAYLOR - PARKINSON: Kenneth V Pilon, Box 86, Matlock, MAN ROC 2B0. Daniel Stephens b N IRE 15 June 1805 m Ann Love b N IRE 16 June 1798. Emigrated pre-1833 to become homesteaders in Medonte and then Gwillimbury twps, Simcoe Co, ONT. Harriet Taylor b Yorkshire, ENG 13 Jan 1847 immigrated pre-1868 and m William Stephens, s/o Daniel above. Lydia Parkinson b near Toronto 26 Mar 1870 m Charles Stephens, s/o William above. Seeking any contacts, will share info.

STEWART - BROWN: Claudia Stewart, Box 30, Penetanguishene, ONT L0K 1P0. David Hamilton m Rebecca Brown, was fireman in Toronto under chief Ardagh, Hook and Ladder Provincial Engine Co 6, died 1899 Barrie, ONT, bd St James cem, Toronto. Children: John b 1856; Rebecca 1861; Sarah 1863; Rebecca Ann 1869; Paul 1874; James; David. Seek info and anc.

STEWART - HAMILTON: Claudia Stewart, Box 30, Penetanguishene, ONT L0K 1P0. Paul Stewart m Ann Hamilton. Paul from IRE to Toronto 1845 as city missionary. Children: David Hamilton b 1834; John Hamilton 1836; Paul Henry 1839; Sarah 1849. All buried in St James cem, Toronto. Paul Henry was

Deputy Treasurer of Simcoe County 1886-1895. Seek info and desc.

THOMAS: Reginald Sandison, 581 Hillcrest Dr, Paradise, CA 95969 USA. Stephen Thomas b c1820, m Susannah Wigle, d/o Joseph, c1850. Lived Gosfield twp, Essex Co, ONT 1861, and in Mersea twp, Essex Co, 1871. I need his prts, grandprts, etc. Census says he was born in Upper Canada.

TREACY - PEARSON: Vivian Treacy, 52 Mabelle Ave, #205, Islington, ONT M9A 4X9. William John Treacy b 1847 E Nissouri twp, Oxford Co, ONT, s/o John & Catherine, m Amanda Pearson b 1855, prob Kent Co, d 1892 with an infant dau in a typhoid epidemic. Other children: John Edward b 1884; William Lionel 1886; Willard 1890. Amanda's bros were: Eli; Joseph; David; all who lived and died in Kent Co (Dresden, Ridgetown, Thamesville, and Kent Bridge area). Info sought regarding Pearson anc & desc.

WALKER: C. B. Campbell, 14 Bering Avenue, Winnipeg, MB R3K 0E9. Searching for the descendants of David John Walker (b Hungerford, 1854, of parents Daniel and Mary) and Susan Jane Campbell (b Madoc, 1848, of parents Daniel and Susan). Marriage took place 5 October 1880 at Madoc.

WATSON: Mary Stevenson Cooper, 213 Verbena Court, Oshawa, ONT L1G 3E8. Mary Ann Watson, b c1838 prob b Stirling, SCOT d/o John and Elizabeth Watson; m Joseph Stevenson, b SCOT, poss St Ninian's Parish. Emig to Australia poss 1861, then to Canada c1871, settled in Huntington twp, Hastings Co, ONT, and bd there. Children: Margaret Elizabeth, Christina, Alison, Mary Ann, Isabella, Blanche, Joseph Milford, Arthur. Last three sis settled in Alberta and BC. Relatives George, Cecil, Clarence, Robert F, Stanley settled in Havelock area. Am seeking all desc.

WELCH: William D Amell, 421 London St, Peterborough, ONT K9H 3A2. Patrick Welch 1797-1880, b IRE, m Ann Gannon 1799-1877 b Co Sligo, IRE. During 1852 census they lived in Cornwall twp, Stormont Co, ONT. Prts buried in RC cem, St Andrews West, ONT. Children: Patrick b 1838; James 1842; William 1844 (these three disappear after 1861 census); Mary Ann m 1849 Patrick Glancey; Ellen m 1857 Hugh Fraser; Bridget m 1870 Silas Rupert; Thomas m 1860 Mary Ann Kavanaugh. Will share info.

WILLOW GROVE (on Lake Erie) - LAURIE: Sandra Dobbie, 15 Ballymena Ct, Don Mills ONT M3C 2B8. Where is Willow Grove? Is it in ONT, Michigan, Erie Co NY, or PA? Is it on Lake Erie near Evans, Erie Co, NY? William Laurie, Esq, third s/o late Patrick Laurie, Esq, of Urral, d 1 Jan 1848 at his res Willow Grove on Lake Erie - death notice in Galloway Advertiser, Wigtonshire, SCOT 17 Feb 1848. William's sis Lydia Mersweather (Laurie) Cumming d in Evans, NY, July 1841. Fam held land in neighboring parishes of Penninghame, Wigtonshire and Minigaff, Kirkcubrightshire. William's eldest bro Patrick d in Stamford, CT, Dec 1848 and his bro David McCaa d 1854 in New Zealand. (Eds. note: there is a Willow Grove settlement in Oneida twp, Hamilton Co, ONT, 15 miles northwest of Cayuga, the county seat.)

VANNATTER/VANATTER: K Baker, 2170 Sherobee Rd, No. 806, Mississauga, ONT L5A 3P8. Julia Ann Vannatter b 20 July 1820 Lincoln Co, ONT, d 1 Aug 1869 Clinton twp, Lincoln Co, wife of Valentine Honsberger 1816-1904. Twelve children. Would like to know the names and vital statistics of Julia's parents and siblings.

CLASSIFIED

CANADIAN GENEALOGIST IS BUSTING AT THE SEAMS! Because we've got a lot of new books coming into stock and we need room to store them, we've decided to hold a half-price sale on back issues of the magazine. Now's the time to complete your collection, and ensure you have easy access to all the valuable material we've published since our inception - at bargain basement prices! Incidentally, Vol. 1, No. 3, is our special guide to Irish research, a complete little handbook in itself. It normally sells for \$3.50.

Volume 1 (no. 2 & 3 only) \$5
Volumes 2 to 8, each \$10

Add \$1 postage for the first volume, 50¢ for each additional volume you order. Offer good until June, 1988.

And some more good news for readers. We now accept VISA for telephone or written orders. To place your order simply call 416/292-9845, or write GENERATION PRESS INC., 172 King Henrys Boulevard, Agincourt, ON M1T 2V6.

THE GREENWOOD TREE IN THREE CONTINENTS - (or a fertile family of five centuries, 1487-1987) by Major Alexander Greenwood, Ph.D, F.C.I.S., F.R.S.A., is the title of a genealogical reference book for the surname Greenwood. In hardback, more than 350 pages, including six pages of photographs, and fully indexed, the book is available from the author for £22 or Can \$45, postpaid. Address your order to R.R. 1, Box 40, Madrona Drive, Nanoose Bay, B.C., V0R 2R0, or Michael Russell (Publishing) Ltd., Wilton, Salisbury, Wiltshire SP20JU, U.K.

QUEBEC ROOTS? - Experienced researcher will undertake ancestry searches in the Province of Quebec, particularly Montreal, as well as bordering areas of Ontario. Please send pertinent information to Mrs. Margaret Turner, 454 Lakeshore Road, Beaconsfield, PQ, H9W 4J5.

NEW DELAWARE SOURCE - *Delaware Advertiser 1827-1831 Genealogical Extracts*, by Margaret Mendenhall Frazier. The only extant, complete collection, privately owned, of the *Delaware Advertiser and Farmer's Journal*, published by W.A. Mendenhall, Wilmington, Delaware, from September 1827 through December 1831, has been microfilmed and extracted for all residents of Delaware. Over 3,000 individuals, and more than 7,000 entries. Included are: marriage and death notices; advertisements; school district descriptions naming property owners & renters, lists of political committees, meetings, delegations, and tickets; tax lists; legal notices. Book: casebound, fully indexed by personal names and places, 272 pages, US \$26 postpaid. Microfilm: of the entire series available on one full roll of 35 mm film, library quality, silver halide process, US \$46.50 postpaid. Order from M.M. Frazier, 44 Toyon Terrace, Dept. C., Danville, CA 94526, USA.

IRISH ANCESTORS - Gorry Research has the skill and experience to carry out genealogical work in Irish records. Paul Gorry, Research Director, was trained by the Genealogical Office and conducted the recently

publicized search on the family of Brian Mulroney. For application form and hourly rate send two international reply coupons to Gorry Research, 16 Hume Street, Dublin 2, IRELAND.

BRUCE AND GREY COUNTIES RESEARCH - Experienced genealogist will search cemetery records, land records, local histories, newspapers, maps, etc. Available by hour or by request. Free estimates. Genealogy Research Services by Sharon Marshman, Box 1252, Port Elgin, ON N0H 2C0.

THE SMITHS OF CAPE BRETON - by Perley Watts Smith, copyright 1967, hardcover, 285 pages, is now available in a 1985 reprint edition for \$25 (Can), postpaid. Order your copy from Vivian Tobey, Box 131, Port Hood, Nova Scotia, CANADA B0E 2W0.

FOR SALE - The equipment and stock for operating a complete historical business, including an easily operated Challenge printing press, 12 fonts of type, chases, 4 printing tables, paper, rollers, ink, etc., everything you will need. Twenty Master Township maps and all their stock, plus 20 more to be done. A complete list of customers. This is a ready-made business, an excellent enterprise for a historical society or a person or persons interested in the History of Canada and the USA, and maintaining same for our present generation and generations to come. For further information call or write Historic Plans & Deeds, 463A Brant Street, Burlington, ON L7R 2G3, 416/634-2483.

COBOURG CENTENNIAL BOOK - Cobourg, Ontario celebrates its sequicentennial in 1987. The book *Early Cobourg* tells how it all started and more, including many names. Indexed. Get your copy and read about this typical Upper Canada development, then come and enjoy the town's celebration. Books available from: Percy L. Cilmo, Box 299, Colborne, ON K0K 1S0, \$8.50 plus \$1.50 mailing.

PHOTOGRAPHER IN THE FAMILY? *Camera Workers: The BC Photographers Directory, 1858-1900* by David Mattison is the answer. Over 475 detailed entries (274 pages, illustrated). "A mother lode of information. . . ." *The Photograph Collector* (New York). Prepayment only, postpaid, Can \$21 or US \$18, from Camera Workers Press, POB 684, Station E, Victoria, B.C. V8W 2P3.

SCOTTISH HISTORICAL RECORDS - Genealogical and family research by R.A. and P.G. Fenwick, Lethangle Wing, Kinross KY13 7EY, Scotland.

PEI OR NOVA SCOTIAN ROOTS? Experienced researcher/writer available. (Published in *Canadian Genealogist*, June 1984, March 1985). University graduate. Peter McGuigan, 108 Kendall Avenue, Toronto, ON M5R 1L7

GENEALOGY ORGANIZER - We will organize your genealogy using computers. Once stored, your information can be quickly printed in a variety of forms and revisions made quickly. For further information write to James Low Documentation, 111 Rainsford

Road, Toronto, ON M4L 3N8.

FAMILY HISTORY RESEARCH - All areas of England covered, especially London and Counties in the South and West. Competitive rates and an efficient service are offered. Write for details to Dr. David Johnson, 16 Wynnes Rise, Sherborne, Dorset, England.

STRATFORD BED AND BREAKFAST - Spend a relaxing retreat in a historic home along the scenic Avon River, then leisurely walk along the river to the Stratford-Perth Archives and enjoy a play at the famous Stratford Shakespearean Festival. Reasonable rates, home-cooked breakfast. Burnside, 139 William Street, Stratford, ON N56A 4X9, or telephone 519/271-7076, Lester Wilker, OG# No. 2723, experienced genealogist and historian.

GENEALOGICAL RESEARCHER - Will search Public Archives and repositories in Toronto area. Experienced in research. Willing to travel short distances. Contact Barbara Keith, 13 Admiral Road, Apt. 3, Toronto, ON M5R 2L4, or telephone 416/961-3289.

TRACE YOUR IRISH ANCESTORS - Write to Historical Research Associates, 7 Lancasterian Street, Carrickfergus, BT38 7AB, NORTHERN IRELAND, or telephone Joan Phillipson BA (Hons), Belfast (0232) 659156, or Jennifer Irwin, BA (Hons), Carrickfergus (09603) 68502. Fee, \$20 an hour, personal cheques accepted.

SASKATCHEWAN GENEALOGICAL RESEARCH - Certified Genealogical Record Searcher (CGRS) now available to research Saskatchewan records, including homestead files, newspapers, cemeteries, local histories, etc. Please contact Shawn R. Mooney, CGRS, Box 3, Plenty, SK S0L 2R0.

IRISH ANCESTORS? - We search for the origin of surnames. Want to know more? Write to: Irish Family Names Society, Box 2095, La Mesa, CA 92041, USA. No obligation.

MOHAWK VALLEY, N.Y. ANCESTRY? - Computerized data from 18th and early 19th century primary sources, viz.: birth, baptism, marriage, death, will, deed, census, & military. Send surname with SASE for details to LIBERTY BELL ASSOCIATES, Box 51, Franklin Park, New Jersey 08823, USA.

IRISH GENEALOGICAL SERVICES - David McElroy, AGRA, 60, Ivanhoe Avenue, Belfast, BT8 8BW, NORTHERN IRELAND. Introductory offer: will search Belfast City Marriage Index 1741-1845. Fee \$5 US per marriage. Enclose \$1 for airmail reply.

MRS. BRENDA MERRIMAN - Certified, experienced researcher in southern Ontario (Upper Canada, Canada West) genealogical records and all Toronto area repositories. Free estimate of probable sources and time; minimum deposit, hourly charge. Send SASE to Mrs. Brenda Merriman, R.R. 1, Puslinch, ON N0B 2J0.

REV. D. MCKENZIE - Experienced genealogical and historical researcher will search Public Archives of Canada documents. Rev. D. McKenzie, Ph.D., 246 Holmwood Ave., Ottawa, Ontario, K1S 2P9.

MRS. ELIZABETH HANCOCKS - Certified Genealogist (CG). Specializes in Ontario research; Loyalist research and ancestry. Write to 172 King Henrys Boulevard, Agincourt, ON M1T 2V6.

HAVE ACCESS, WILL SEARCH: Upper Canada Land Petitions, Ontario Census Records (1851, 1861, 1871, 1881) and local history sources for Oxford & Middlesex Counties. Send a SASE for estimate of time (cost) your query will require. Albert Stray, 558 Rosedale Ave., London, Ontario, N6B 2C6.

PRAIRIE CONNECTIONS? - Experienced researchers specializing in Manitoba genealogical records. Free initial consultation. Minimum deposit. Hourly rate. Write Prairie Connections, 368 Maplewood Ave., Winnipeg, Manitoba, R3L 1A9.

GENEALOGICAL RESEARCH - carried out throughout the British Isles by professionals. We are particularly experienced in tracing the origins of emigrants to North America. Send full details for free analysis and brochure: Ancestral Heritage Ltd, Dept 19, Guild House, Albert Road South, Southampton, Hants SO1 1FR, England.

THE HEIRS OF FRANCIS LAYTON - The Story of a Nova Scotia Family, 622 pages, hard cover, \$27 Canadian or \$23 in U.S. funds, including postage and packaging. Available now. Order from J.F. Layton, Box 95, Innisfail, AB, T0M 1A0.

ARE YOU INTERESTED IN TRACING YOUR IRISH ANCESTORS? Contact Mrs. Elizabeth Kelly, 18 Ophir Gardens, Belfast, BT15 5EP, Northern Ireland for details of an efficient and reasonable service through Ireland.

ULSTER FAMILY REGISTER - A 600,000 data base genealogical archive covering Ulster Province. Comprises marriages c1719-1845; census substitutes from 1766 including c1830 Freeholder's (Voters) lists recording names and townland addresses. Search fee: £10 sterling (1986 fees) for each surname to be searched. Other research undertaken by the hour. Write John McCabe, 12F South Link, Belfast BT11 8GX, Northern Ireland.

CLASSIFIED ... YOUR BEST BUY - Why not take a classified ad in CG to advertise your product or services. At \$10 for a single insertion, or \$32 for a four-time repeat, your ad will speak to genealogists throughout Canada and the United States. We strongly recommend the four-insertion package. Feedback to us from users indicates excellent results.



